



# *Paint Applicators*

## *Product Catalogue*



**QUALITY and INNOVATION SINCE 1866**

<b>Company Profile .....</b>	<b>3 - 5</b>
<b>Merchandising Program .....</b>	<b>6 - 8</b>
<b>Paint Brushes .....</b>	<b>9 - 21</b>
Vintage Pro Series Brushes .....	11
Professional Brushes .....	12
Consumer Brush Lines .....	15
Special Purpose Brushes.....	17
Promotional Brushes .....	19
<b>Roller Refills .....</b>	<b>22 - 26</b>
Vintage Pro Series & Elite Professional Plus Rollers.....	23
Professional Rollers.....	24
Econo Grade and Specialty Rollers.....	26
<b>Roller Frames .....</b>	<b>27 - 29</b>
<b>Roller Trays .....</b>	<b>30 - 33</b>
<b>Roller Sets .....</b>	<b>34</b>
<b>Extension Poles .....</b>	<b>35</b>
<b>Promotional Rollers .....</b>	<b>36</b>
<b>Promotional Roller Sets.....</b>	<b>37</b>
<b>Time Trimmer Mini-Rollers .....</b>	<b>38 - 42</b>
<b>Trim Coaters.....</b>	<b>43 - 45</b>
<b>Trim Roller Sets .....</b>	<b>46</b>
<b>Painting Accessories.....</b>	<b>47 - 50</b>
<b>Floor Finish Applicators .....</b>	<b>51</b>





**Thomas S. Simms**  
*Chairman and C.E.O.*



# SIMMS

## *Company Profile*

T.S. Simms & Co. has a long history as the foremost manufacturer of quality painting tools in Canada. In fact, the Simms Company has had a well known tradition of craftsmanship and innovation since 1866. The Company's solid reputation is due to the dedication of its people and a consistent focus on quality and service. Through a sustained effort to advance its information systems, enhance its production capabilities; and strengthen its sales service and merchandising; the Company is in a prime position to meet future market demands and expand its horizons. We look forward with confidence to the prospect of new challenges and opportunities in today's dynamic marketplace.

## *The Simms Brand*

Simms is a recognized and trusted brand name in Canada.

Industry renowned for quality DIY and Professional products backed by a 100% guarantee.



## Sales Support

Simms has a dedicated national sales force of regional management teams working with contracted in-store merchandising and service companies.



## System Support

Simms operates advanced computer systems, is fully EDI compatible and uses integrated in-plant scanning technology. Simms is on the world wide web at [www.simms.ca](http://www.simms.ca).



## Environmental Awareness

Simms is an industry leader by utilizing recycled materials as much as possible and continues to explore and develop new enviro-friendly packaging and products.





Simms has a long history of product quality, innovation and design excellence. At Simms, we combine the most modern of automated manufacturing methods with the traditional skills of our craftspeople, often incorporating extra steps, to ensure that our paint applicator products are of the very highest quality. Only the best grades of bristle, synthetic filaments and top notch roller fabrics are purchased for our paint brush and roller lines. Several of our patented design plastic paint trays and roller frames have become the standard for the industry and many unique painting and trim accessories have been introduced over the years to compliment our core applicators resulting in one of the most comprehensive selection of painting tools for both the Do It Yourselfer and Painting Professional.

Simms is never content with “standing still”. We do extensive product testing and Simms is a member of the American Society for Testing Materials (ASTM), which is well known for its work in the development of exacting standards and testing methods. Simms is constantly refining, researching and developing new products to respond to the changing needs of the market place.



## Proven Merchandising Support

T.S. Simms & Co. has always been on the leading edge with merchandising to further support product sell through.

Based on an easy to use selection system, Simms comprehensive merchandising program helps sell consumers up to top quality products and ensures that

**“the right tools are purchased for the job”.**

**Packaging, header boards and p.o.p strips** are bold and eye-catching, colour coded to the appropriate quality level, while

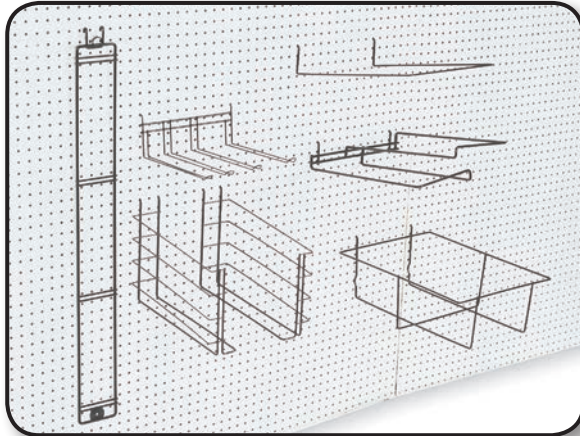
in simple terminology, explaining proper usage applications. A **consumer use brochure** is also available with easy to understand **“Do’s & Don’ts”** of painting to further advise your customers on how to get the best results, what tools they need for their painting projects and handy clean-up tips.



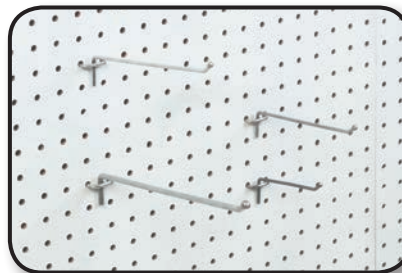


## Proven Merchandising Support

Problem-free **fixture displays** are easy to maintain and stock, and will improve the look of any paint applicator department.



CODE	DESCRIPTION
29 00 001	Pegboard Hook 4"
29 00 002	Pegboard Hook 6"
29 00 003	Pegboard Hook 8"
29 00 004	Pegboard Hook 10"
29 00 007	28FB Foam Brush Rack 4 Prong
29 00 020	20WR Warehouse Rack
29 00 029	26BB Brush Strip Rack 24"x2"
49 00 030	30S Sign Frame Rack 48"x7"
49 00 050	50T Roller Set & Tray Bin
49 00 065	65F Roller Frame Rack
49 00 072	72L Tray Liner Rack
49 00 086	86R Roller Refill Bin



Simms offers a selection of attractive, **prepackaged promotional product displays** for additional impulse sales. Available in compact counter top formats or larger quarter, half or full pallet assortments. Contact your Simms sales or customer service representative for more information.





## JDA Space Management

Recognizing the need for store specific assortments, Simms is now using JDA Space, a state of the art, 32-bit computerized space management system designed to meet all your merchandising needs.

JDA Space combines high quality digital image displays that are technically and visually accurate with detailed analytic capabilities. Let us work with you to produce customized planograms that are not only attractive to your customers, but will increase in store sales, maximize profits and save you time – real business benefits you can measure.

## Planograms (Proven Performers)

These planograms represent selections and layouts that are proven in the marketplace.

However, Simms merchandising is completely flexible, and we can develop a merchandising program to suit your specific space and market requirements.



### 4 Foot – Fast Turns, Good Selection:

Ideal for small hardware or paint stores. Provides a Good, Better, Best selection of brushes, rollers and kits.



### 8 Foot – Easy Add-On Sales:

Our 8 foot planogram has a broader selection of roller refills and brushes presented in any easy selfservice format. This program also contains a range of accessories to increase impulse sales. Ideal for hardware and paint stores.



### 12 Foot – Increase Your Profits with Professional Sales:

Don't miss out on high margin professional sales. The 12 foot planogram contains a comprehensive selection of professional applicators in addition to a full range of consumer products. Attractive packaging and brush merchandising strips are designed to trade up the serious DIYer and the contractor to top quality professional tools. This program is suitable for lumber yards, building centres and large paint and decorating centres.



### 16 Foot – Maximize Your Sales with a Full Selection:

The 16 foot program is ideal for home centres, lumber yards and large scale paint and decorating centres. This program contains a larger range of consumer and professional products plus a wider selection of specialty products. This program will meet all of your customers' paint applicators needs.



## Features of a Quality Paint Brush

Tapered filaments produce an even paint flow off the end of the brush. Flagged tips ("Split-ends") provide paint retention and a smooth finish.

Stainless steel ferrule that won't rust.

Nickel-plated nails secure ferrule to brush handle.

Chiselled tip forms a sharper edge for more accurate trimming.

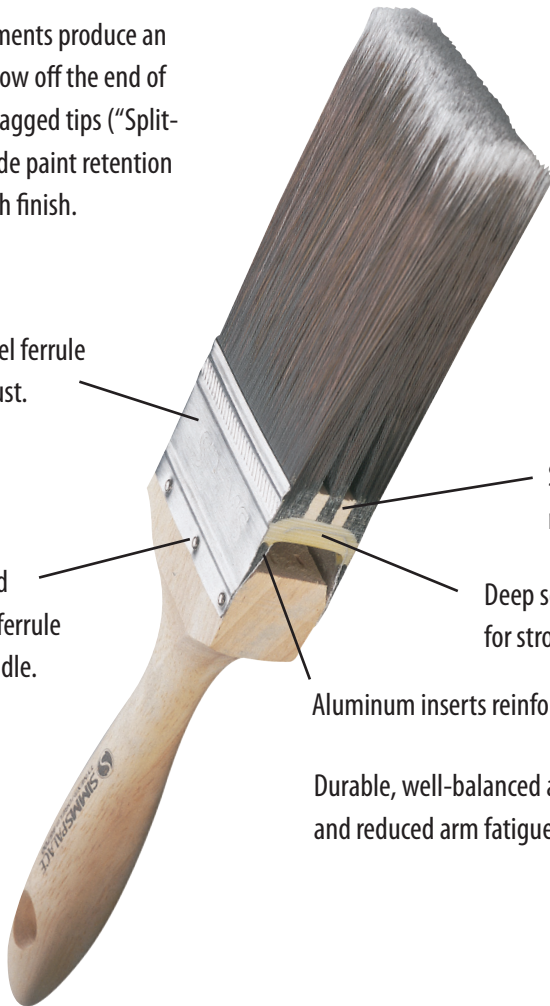
Bristle formulation of short lengths for stiffness (paint spreading) and long lengths for tip flexibility resulting in smooth, streakless finish.

Space plugs create a reservoir to hold more paint (less dipping required).

Deep set, solvent resistant epoxy compound for strongest filament hold.

Aluminum inserts reinforce and strengthen the epoxy setting.

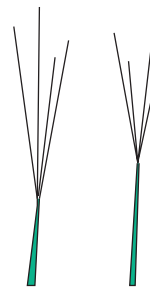
Durable, well-balanced and comfortable handle for control and reduced arm fatigue.



### Remember, a better quality paint brush will:

- Hold more paint and carry it without dripping
- Provide a smoother paint flow (no dragging) with an even layoff (no dumping)
- Leave no brush streaks or loose bristles on the surface
- Cover more surface with less effort (dipping)
- Leave a beautiful finish
- Clean-up easier
- Last longer

### "Flagged" close-up



Natural in hog hair


Mechanically done with synthetic filaments

Tapered filaments larger at butt than tip

butt  tip

Flexes more at tip allowing more uniform paint release

## What Size Brush to Use?

<b>SMALL</b>	15mm-30mm (5/8"-1 1/4")	Ideal for trim work, shutters, corners SMALL and touch-up
<b>MID-SIZE</b>	50mm (2")	Ideal for use on baseboards, mouldings, window sashes, small furniture, cupboards and outside trim
<b>LARGE</b>	75mm (3")	Ideal for large flat surfaces such as cabinets, cupboards, shelves, doors, beams, tables, fences, gutters, stair steps, siding and concrete blocks
	100mm (4")	Ideal for even larger flat surfaces such as walls, ceilings, floors, paneling, barns, boat hulls and exterior house painting
<b>ANGULAR SASH BRUSHES</b>	38mm-75mm (1 1/2"-3")	Bristles cut at angle with longer handles for trimming tight places such as doors, windows, corners and ceilings
<b>SPECIALTY BRUSHES</b>		<p>There are several types of specialty brushes for tricky applications. Two examples include the</p> <p><b>Offset Radiator Brush:</b> bent at 45° for painting behind radiators or other awkward spots</p> <p>and <b>Foam Brush:</b> which is very good for gloss paints, stains, and urethanes on furniture, trim, hobby and craft projects. (Toss away after use).</p>



# Vintage Pro Paint Brushes



www.simms.ca

## Vintage® Pro Handcrafted Professional Series

- These superior quality brushes are handcrafted from only the finest materials and have been performance tested by today's dedicated professionals who demand perfection job after job.
- Made from DuPont patented Solid Round Tapered (SRT) filaments and the finest Natural Chinese Hog Bristle blends.
- Premium stainless steel ferrules and aluminum inserts.
- Superbly balanced solid hardwood handles.
- Finished with Simms time-tested, handcrafted techniques making Vintage® Pro paint brushes the right tools for the hands of today's professional painters.

ITEM NO.	DESCRIPTION	SIZE mm	in	THICKNESS mm	in	LENGTH OUT mm	in	SHELF PACK	WEIGHT/PACK Kg	lb
<i>Dyed Tynex® nylon/Orel® polyester. Our most popular synthetic blend. Ideal for interior and exterior painting. For all paints.</i>										
8200	EMERALD	38	1½	13	½	61	2¾	10	0.8	1¾
	ANGULAR SASH	50	2	16	⅝	74	2⅞	10	1.3	2⅞
		64	2½	16	⅝	74	2⅞	10	1.5	3¼
		75	3	17	11/16	86	3⅜	10	2.0	4⅜
8205	MARBLE	64	2½	16	⅝	74	2⅞	10	1.5	3¼
	MASTER SASH (Beaver Tail Handle)									
8300	RUBY	38	1½	10	⅜	58	2¼	10	0.7	1½
	THIN ANGULAR SASH	50	2	11	7/16	61	2¾	10	0.9	2
	(Rat Tail Handle)	64	2½	13	½	67	2⅝	10	1.3	2⅞
		75	3	13	½	74	3⅞	10	1.5	3¼
8700	PALACE	50	2	19	¾	77	3	10	0.9	2
	WALL BRUSH	75	3	22	⅞	89	3½	5	1.0	2¼
	(Beaver Tail Handle)	100	4	22	⅞	95	3¾	5	1.4	3

*Dyed Chinex® nylon/Orel® polyester. Superior coverage and paint release plus easier clean-up. Works especially well with low VOC paints and heavy-bodied latex coatings. For all paints.*

8220	<b>BORDEAUX</b> ANGULAR SASH	38	1 ½	13	½	61	2 ¾	10	0.8	1 ¾
		50	2	16	5/8	74	2 7/8	10	1.3	2 7/8
		64	2 ½	16	5/8	74	2 7/8	10	1.5	3 ¼
		75	3	17	11/16	86	3 3/8	10	2.0	4 3/8

*Finest white China bristle blend available. Excellent for woodwork, furniture and marine applications. For oil paints.*

7200	<b>YORKSHIRE</b> ANGULAR SASH	64	2 ½	16	5/8	74	2 7/8	10	1.5	3 ¼
------	----------------------------------	----	-----	----	-----	----	-------	----	-----	-----



ITEM NO.	DESCRIPTION	SIZE		THICKNESS		LENGTH OUT		SHELF PACK	WEIGHT/PACK		MASTER PACK	WEIGHT/PACK	
		mm	in	mm	in	mm	in		Kg	lb		Kg	lb

## Pro Max®

Handcrafted solid round tapered nylon polyester. Firm blend, contractor quality. Ideal for today's medium and heavy bodied low VOC paints. Well balanced wooden handle and stainless steel ferule.

8070	<b>PRO MAX</b>	50	2	14	$\frac{9}{16}$	70	$2\frac{3}{4}$	12	1.3	2.8	144	15.6	34.3
	ANGULAR SASH	64	$2\frac{1}{2}$	16	$\frac{5}{8}$	77	3	12	1.7	3.8	144	20.4	44.9
	For all paints.	75	3	17	$\frac{11}{16}$	83	$3\frac{1}{4}$	12	2.3	5	144	27.6	60.7

Handcrafted solid round tapered nylon polyester. Firm blend and Contractor quality. Ideal for today's medium and heavy bodied low VOC paints. Well balanced wooden handle and stainless steel ferule. Extra long filaments for longer brush life and more coverage.

8080	<b>PRO MAX XTRA</b>	50	2	14	$\frac{9}{16}$	77	3	12	1.4	2.9	144	16.8	36.9
	ANGULAR SASH	64	$2\frac{1}{2}$	16	$\frac{5}{8}$	83	$3\frac{1}{4}$	12	1.9	4.1	144	22.8	50.2
	For all paints.	75	3	17	$\frac{11}{16}$	89	$3\frac{1}{2}$	12	2.5	5.5	144	30	66

## Renaissance® / Eclipse®

Unique synthetic blend of **NYLYN™** filaments and oval design provide superior pick-up and release for exceptional coverage and finish. Using time tested quality standards, each brush is hand crafted to provide the best precision trim. Firm blend for today's low VOC paints.

5010	<b>RENAISSANCE</b>	38	$1\frac{1}{2}$	14	$\frac{9}{16}$	60	$2\frac{3}{8}$	10	0.7	1.5	100	7	15
	OVAL SASH	50	2	16	$\frac{5}{8}$	67	$2\frac{5}{8}$	10	0.9	2.1	100	9	21
	For all paints.	64	$2\frac{1}{2}$	19	$\frac{3}{4}$	70	$2\frac{3}{4}$	10	1.4	3.1	100	14	31
		75	3	22	$\frac{7}{8}$	75	3	10	1.6	3.6	100	16	36

Eclipse - Unique synthetic blend of **NYLYN™** filaments provide superior pick-up and release for exceptional coverage and finish. Using time tested quality standards, each brush is hand crafted to provide the best precision trim. Firm blend for today's low VOC paints.

6020	<b>ECLIPSE</b>	38	$1\frac{1}{2}$	13	$\frac{1}{2}$	61	$2\frac{3}{8}$	10	0.8	$1\frac{3}{4}$	100	8.2	18
	ANGULAR SASH	50	2	14	$\frac{9}{16}$	70	$2\frac{3}{4}$	10	1.3	$2\frac{7}{8}$	100	11.3	25
	For all paints.	64	$2\frac{1}{2}$	16	$\frac{5}{8}$	77	3	10	1.5	$3\frac{1}{4}$	100	15.9	35
		75	3	16	$\frac{5}{8}$	83	$3\frac{1}{4}$	10	2	$4\frac{3}{8}$	100	20.4	45

## Elite®

Superb performing polyester/nylon solid tapered blend. Outstanding pick-up and release. Solid stained hardwood handles. Copper ferrules and aluminum inserts.

8000	<b>ELITE</b>	38	$1\frac{1}{2}$	13	$\frac{1}{2}$	61	$2\frac{3}{8}$	10	0.8	$1\frac{3}{4}$	100	8.2	18
	ANGULAR SASH	50	2	16	$\frac{5}{8}$	74	$2\frac{7}{8}$	10	1.3	$2\frac{7}{8}$	100	11.3	25
	For all paints.	64	$2\frac{1}{2}$	16	$\frac{5}{8}$	74	$2\frac{7}{8}$	10	1.5	$3\frac{1}{4}$	100	15.9	35
		75	3	17	$\frac{11}{16}$	80	$3\frac{1}{8}$	10	2.0	$4\frac{3}{8}$	100	20.4	45

Superb performing polyester/nylon solid tapered blend. Outstanding pick-up and release. Solid stained hardwood handles. Copper ferrules and aluminum inserts.

8500	<b>ELITE</b>	50	2	19	$\frac{3}{4}$	77	3	10	0.9	2	100	11.3	25
	WALL BRUSH	75	3	22	$\frac{7}{8}$	83	$3\frac{1}{4}$	5	1.0	$2\frac{1}{4}$	50	10.4	23
	For all paints.												



# Professional Paint Brushes



www.simms.ca

ITEM NO.	DESCRIPTION	SIZE		THICKNESS		LENGTH OUT		SHELF PACK	WEIGHT/PACK		MASTER PACK	WEIGHT/PACK	
		mm	in	mm	in	mm	in		Kg	lb		Kg	lb

## Artizan® / Brant®

High quality white bristle and solid tapered polyester formulation for high quality finishes. Solid stained hardwood handles. Copper ferrules and aluminum inserts.

7000	<b>ARTIZAN</b>	38	1 ½	13	½	61	2 ¾	10	0.8	1 ¾	100	8.2	18
	ANGULAR SASH	50	2	16	⅝	74	2 ⅞	10	1.3	2 ⅞	100	11.3	25
	For oil paints.	64	2 ½	16	⅝	74	2 ⅞	10	1.5	3 ¼	100	15.9	35

High quality white bristle and solid tapered polyester formulation for high quality finishes. Solid stained hardwood handles. Copper ferrules and aluminum inserts.

2600	<b>BRANT</b>	30	1 ¼	13	½	64	2 ½	10	0.6	1 ¼	100	5.9	13
	WALL BRUSH	50	2	19	¾	77	3	10	1.2	2 ⅝	100	10.4	23
	For oil paints.	75	3	22	⅞	83	3 ¼	5	0.9	2	50	9.1	20
		100	4	22	⅞	89	3 ½	5	1.2	2 ⅝	50	10.4	23



## Easy-Trim®

Trim work and precision painting has never been easier with the Easy-Trim brush. Thin lightweight handles for easier control. Solid tapered polyester/nylon filament blend. Solid stained hardwood handles. Stainless steel ferrule.

8050	<b>EASY TRIM</b>	38	1 ½	10	¾	58	2 ¼	10	0.7	1 ½	100	6.8	15
	THIN ANGULAR SASH	50	2	11	⅞	61	2 ¾	10	0.9	2	100	9.1	20
	(Rat Tail Handle)	64	2 ½	13	½	67	2 ⅝	10	1.3	2 ⅞	100	13.6	30
	For all paints.												

Short, lightweight handle for extra control. Ideal for painting tight areas.

1942	<b>EASY TRIM</b>	38	1 ½	10	¾	58	2 ¼	20	1.5	3.3	200	15	33
	THIN ANGULAR SASH	50	2	11	⅞	61	2 ¾	20	1.6	3 ½	200	16	35
	POLYESTER/NYLON												
	For all paints.												



## Pro Select®

Best value professional angular sash brushes. Available in both regular and thin spec. Soft solid tapered polyester/nylon filament blend for smooth finishes and excellent coverage.

8020	<b>PRO SELECT</b>	38	1 ½	10	¾	58	2 ¼	10	0.7	1 ½	100	6.8	15
	THIN ANGULAR SASH	50	2	11	⅞	61	2 ¾	10	0.9	2	100	9.1	20
	(Rat Tail Handle)	64	2 ½	13	½	67	2 ⅝	10	1.3	2 ⅞	100	13.6	30
	For all paints.												

8030	<b>PRO SELECT</b>	38	1 ½	13	½	61	2 ¾	10	0.8	1 ¾	100	8.2	18
	ANGULAR SASH	50	2	16	⅝	74	2 ⅞	10	1.3	2 ⅞	100	11.3	25
	For all paints.	64	2 ½	16	⅝	74	2 ⅞	10	1.5	3 ¼	100	15.9	35



ITEM NO.	DESCRIPTION	SIZE		THICKNESS		LENGTH OUT		SHELF PACK	WEIGHT/PACK		MASTER PACK	WEIGHT/PACK	
		mm	in	mm	in	mm	in		Kg	lb		Kg	lb

## XL®

High quality natural white bristle blend. Solid hardwood handles. Nickel-plated ferrules.

2805	<b>XL</b>	50	2	19	¾	83	3 ¼	10	1.1	2 ¾			
	<b>WALL BRUSH</b>	75	3	22	7/8	89	3 ½	5	1.0	2 ¼			
	For oil paints.												

## Golden Touch Superior Performance Series

Unique "Crinkle" polyester/nylon filament blend for a superior painting performance. Solid hardwood handles. Stainless steel ferrules.

1750	<b>WALL BRUSH</b>	30	1 ¼	13	½	64	2 ½	10	0.4	15/16	100	4	9 ½
	<b>POLYESTER/</b>	50	2	19	¾	70	2 ¾	10	0.8	1 11/16	100	7.9	17 ½
	<b>NYLON</b>	75	3	22	7/8	83	3 ¼	5	0.9	2	50	9.1	20
	For all paints.												

1974	<b>ANGULAR SASH</b>	25	1	11	7/16	55	2 1/8	10	0.4	15/16	100	4	9 ½
	<b>POLYESTER/</b>	38	1 ½	13	½	55	2 1/8	10	0.7	1 ½	100	6.8	15
	<b>NYLON</b>	50	2	16	5/8	67	2 5/8	10	0.9	2	100	9.1	20
	For all paints.	64	2 ½	16	5/8	74	2 7/8	10	1.4	3	100	13.6	30

## Ultra Grip® Ergonomic Handle Series

### Premium Quality

A premium "D.I.Y." line of wall and angular paint brushes with tapered polyester filaments. Stainless steel ferrules. The eye-catching ergonomic handles are constructed of solvent resistant rubber and plastic with "extra grip" grooves at the base for easier holding.

1450	<b>WALL BRUSH</b>	30	1 ¼	13	½	58	2 ¼	20	1.1	2 ½	200	11.8	26
	<b>POLYESTER</b>	50	2	16	5/8	64	2 ½	20	1.5	3 ¼	200	15.2	33 ½
	For all paints.	75	3	19	¾	77	3	10	1.3	2 7/8	100	13.6	30
		100	4	22	7/8	83	3 ¼	10	1.6	3 ½	100	16.3	36

1935	<b>ANGULAR SASH</b>	38	1 ½	13	½	55	2 1/8	10	0.9	1 7/8	100	8.8	19 ½
	<b>POLYESTER</b>	50	2	16	5/8	66	2 5/8	10	1.0	2 ¼	100	10.7	23 ½
	For all paints.	64	2 ½	16	5/8	70	2 ¾	10	1.6	3 ½	100	16.3	36

1937	<b>ANGULAR SASH</b>	50	2	16	5/8	67	2 5/8	20	2.2	4.8	200	22	48
	<b>POLYESTER</b>												
	For all paints.												



# Paint Brushes



www.simms.ca

ITEM NO.	DESCRIPTION	SIZE		THICKNESS		LENGTH OUT		SHELF PACK	WEIGHT/PACK		MASTER PACK	WEIGHT/PACK	
		mm	in	mm	in	mm	in		Kg	lb		Kg	lb

## Premier Quality

Best quality for the "DIY'er. Top quality finishes, fast and easy. Injection-moulded plastic handles. Brass ferrules.

1930	<b>ANGULAR SASH</b> POLYESTER/NYLON For all paints.	38	1 1/2	13	1/2	55	2 1/8	10	0.8	1 3/4	100	8.2	18
		50	2	16	5/8	66	2 5/8	10	0.9	2	100	9.1	20
		64	2 1/2	16	5/8	74	2 7/8	10	1.4	3	100	13.6	30
2930	<b>ANGULAR SASH</b> BRISTLE/POLYESTER For oil paints.	38	1 1/2	13	1/2	55	2 1/8	10	0.8	1 3/4	100	8.2	18
		50	2	16	5/8	66	2 5/8	10	0.9	2	100	9.1	20
		64	2 1/2	16	5/8	74	2 7/8	10	1.4	3	100	13.6	30
		75	3	17	11/16	74	2 7/8	10	2.0	4 3/8	100	20.0	44
1400	<b>REGAL</b> POLYESTER/NYLON For all paints.	30	1 1/4	13	1/2	58	2 1/4	20	1.1	2 1/2	200	11.3	25
		50	2	16	5/8	64	2 1/2	20	1.5	3 1/4	200	15.0	33
		75	3	19	3/4	77	3	10	1.3	2 7/8	100	13.2	29
		100	4	22	7/8	83	3 1/4	10	1.6	3 1/2	100	15.9	35
2400	<b>BLACKBIRD</b> BRISTLE/POLYESTER For oil paints.	30	1 1/4	13	1/2	64	2 1/2	20	1.1	2 3/8	200	11.3	25
		50	2	16	5/8	70	2 3/4	20	1.8	4	200	18.1	40
		75	3	19	3/4	77	3	10	1.6	3 1/2	100	15.9	35
		100	4	19	3/4	83	3 1/4	10	2.0	4 3/8	100	20.0	44



## General Purpose

Better quality, moderately priced for general household interior and exterior painting. Injection-moulded plastic handles.

1300	<b>SATELLITE</b> POLYESTER For all paints.	30	1 1/4	11	7/16	58	2 1/4	20	1.1	2 3/8	200	11.8	26
		50	2	15	9/16	64	2 1/2	20	1.7	3 3/4	200	17.8	39 1/4
		75	3	19	3/4	70	2 3/4	10	1.4	3	100	14.6	32 1/4
		100	4	19	3/4	77	3	10	1.8	4	100	19.5	43
2300	<b>STREAMLINE</b> BRISTLE/POLYESTER For oil paints.	30	1 1/4	11	7/16	58	2 1/4	20	1.1	2 3/8	200	11.8	26
		50	2	15	9/16	64	2 1/2	20	1.8	4	200	18.6	41
		75	3	19	3/4	70	2 3/4	10	1.6	3 1/2	100	16.4	36
		100	4	19	3/4	77	3	10	2.0	4 3/8	100	20.9	46



## Econo Grade

Good quality, economically priced for toss away painting jobs where a quality finish is not a concern. Injection-moulded plastic handles.

1200	<b>DIPLOMAT</b> POLYESTER For all paints.	30	1 1/4	10	3/8	51	2	20	0.8	1 3/4	200	8.2	18
		50	2	13	1/2	58	2 1/4	20	1.5	3 1/4	200	14.8	32 1/2
		75	3	13	1/2	64	2 1/2	10	1.1	2 3/8	100	11.6	25 1/2
		100	4	16	5/8	70	2 3/4	10	1.6	3 1/2	100	17.8	39
2200	<b>THRUSH</b> NATURAL BRISTLE For oil paints.	30	1 1/4	10	3/8	51	2	20	0.8	1 3/4	200	8.4	18 1/2
		50	2	13	1/2	58	2 1/4	20	1.6	3 1/2	200	16.4	36
		75	3	13	1/2	64	2 1/2	10	1.1	2 3/8	100	11.7	25 3/4
		100	4	16	5/8	70	2 3/4	10	1.7	3 3/4	100	18.0	39 1/2



ITEM NO.	DESCRIPTION	SIZE		THICKNESS		LENGTH OUT		SHELF PACK	WEIGHT/PACK		MASTER PACK	WEIGHT/PACK	
		mm	in	mm	in	mm	in		Kg	lb		Kg	lb

## Utility Grade

Low priced, ideal for "touch-up" jobs around the home, industrial cleaning uses and adhesive applications. Injection-moulded plastic handles.

1100	<b>STAR</b>	15	5/8	8	5/16	45	1 3/4	20	0.3	2/3	200	3.5	7 1/2
	POLYESTER	30	1 1/4	10	3/8	45	1 3/4	20	0.7	1 1/2	200	7.3	16
	For all paints.	50	2	10	3/8	45	1 3/4	20	1.1	2 3/8	200	11.8	26
		75	3	13	1/2	45	1 3/4	10	0.9	2	100	9.9	20
		100	4	13	1/2	51	2	10	1.1	2 1/2	100	11.8	26

2100	<b>REDBIRD</b>	15	5/8	7	1/4	45	1 3/4	20	0.3	2/3	200	3.5	7 1/2
	NATURAL BRISTLE	30	1 1/4	8	5/16	45	1 3/4	20	0.7	1 1/2	200	7.3	16
	For oil paints.	50	2	10	3/8	45	1 3/4	20	1.1	2 3/8	200	11.8	26
		75	3	13	1/2	45	1 3/4	10	0.9	2	100	8.9	19 1/2
		100	4	13	1/2	51	2	10	1.1	2 1/2	100	12.3	27

Low priced for gluing, touch-up, chip removal around machines and other industrial applications. Wood handles.

9900	<b>CHIP</b>	13	1/2	7	1/4	38	1 1/2	36	0.3	2/3	864	7.2	15 7/8
	NATURAL BRISTLE	25	1	8	5/16	38	1 1/2	36	0.6	1 1/3	864	14.4	31 3/4
		50	2	9	11/32	38	1 1/2	24	0.9	2	432	16.2	35 3/4
		75	3	10	3/8	38	1 1/2	24	1.4	3	432	25.2	55 1/2
		100	4	10	3/8	45	1 3/4	12	0.9	2	288	21.6	47 5/8

## Specialty Applications

Extra thick and longer length filaments hold more paint and stain for greater coverage. Handle is threaded for use with standard extension poles to prevent bending over and straining to reach high places.

1960	<b>XL</b>	100	4	37.5	1 1/2	80	3 1/8	6	1.5	3.3	36	9	19.8
	STAIN & PAINT POLYESTER	125	5	37.5	1 1/2	80	3 1/8	6	1.65	3.6	36	9.9	21.8

Extra thick brush for more holding capacity. Ideal for stain and water sealer applications on decks, fences and siding. Plastic handle is threaded for use with standard extension pole to prevent bending over and straining to reach high places.

2957	<b>STAIN</b>	100	4	30	1 1/4	40	1 5/8	10	0.9	2	60	5.7	12 1/2
	NATURAL BRISTLE	140	5 1/2	40	1 5/8	40	1 5/8	10	2.6	5.7	60	16	35 3/16

Economically priced for interior and exterior staining and water sealer applications such as on decks, fences and siding. Packed in display box. Injection-moulded plastic handles.

1904	<b>STAIN</b> POLYESTER	100	4	19	3/4	83	3 1/4	12	1.3	2.9	60	6.5	14.3
------	---------------------------	-----	---	----	-----	----	-------	----	-----	-----	----	-----	------

2951	<b>STAIN</b>	75	3	16	5/8	64	2 1/2	25	2.1	4 5/8	100	8.4	18 1/2
	BRISTLE/POLYESTER	100	4	16	5/8	70	2 3/4	15	1.6	3 1/2	60	6.4	14



# Special Purpose Brushes



www.simms.ca

ITEM NO.	DESCRIPTION	SIZE		THICKNESS		LENGTH OUT		SHELF PACK	WEIGHT/PACK		MASTER PACK	WEIGHT/PACK	
		mm	in	mm	in	mm	in		Kg	lb		Kg	lb

Excellent oval trim brush. Artist brush control for very fine work.  
Ideal for industrial cleaning use. Wood Handle.

2651	ONYX SASH	#2	13	½	40	1 ⅝		24	0.5	1			
	NATURAL	#4	16	⅝	45	1 ¾		12	0.7	1 ½			
	BRISTLE	#6	19	¾	51	2		12	0.5	1			
		#8	19	¾	58	2 ¼		12	0.7	1 ½			

45° angle at the shoulder. Designed to make painting easier behind radiators, pipes, toilets and other hard to reach places. Injection-moulded plastic handle.

2940	OFFSET RADIATOR		38	1 ½	8	⅝	45	1 ¾	10	0.7	1 ½	100	6.8	15
	NATURAL BRISTLE													

Paste and glue brush. Ideal for applying PVC cement. One-piece metal ferrule.

139	ACID SWAB		11	7/16			33	1 ⅝	144	0.9	2			
	NATURAL BRISTLE													



Inexpensively priced, single-use foam painters for small touch-up jobs around the home.  
Use with all paints, stains, varnishes and urethanes on smooth surfaces.  
Not recommended for shellac and lacquer. Rounded wooden dowel-style handles.

3995	FOAM		25	1	14	9/16	51	2	48	0.5	1	864	4.9	11
			50	2	14	9/16	62	2 7/16	48	0.7	1 ½	480	4.7	10 ½
			75	3	14	9/16	62	2 7/16	36	0.7	1 ½	360	4.6	10
			100	4	14	9/16	73	2 7/16	24	0.7	1 ½	192	3.5	7.8

3996	FOAM	3 Piece							20	1.2	2 ⅝	120	4.1	9
	25/50/75mm	(1"/2"/3")												



## White Wash / Masonry Brushes

For applying roofing tar and foundation coatings. Wood block. Use with tapered extension pole. (Simms #6829)

5920	JUNCO ROOFING		175	7	38	1 ½	64	2 ½	20	6.8	15			
	WHITE TAMPICO FIBRE													

For applying white wash, wallpaper paste, shingle stains, foundation coatings, roof and rain gutter patching. Injection-moulded plastic handle.

5971	CONDOR		100	4	19	¾	67	2 ⅝	20	2.2	4 7/8			
	WHITE TAMPICO FIBRE													

Excellent for applying foundation coatings and sealers. Injection-moulded plastic handle.

5982	KALSOMINE		175	7	19	¾	67	2 ⅝	20	3.4	7 ½			
	WHITE TAMPICO FIBRE													





## Wire Scratch Brushes

General purpose wire scratch brushes for surface preparation work. For removing flaking paint, dirt and grease from wood and metal surfaces. High quality round steel wire and wooden handles.

ITEM NO.	DESCRIPTION	SIZE		THICKNESS		LENGTH OUT		SHELF PACK	WEIGHT/PACK		MASTER PACK	WEIGHT/PACK	
		mm	in	mm	in	mm	in		Kg	lb		Kg	lb
6300	<b>FLAT BACK RECTANGULAR</b> 6-Row	181	7 1/8	53	2 3/32	25	1	20	3.6	8	100	18.0	39 1/2
6320	<b>SHOE HANDLE</b> 4-Row	257	10 1/8	25	1	25	1	20	2.9	6 3/8	100	14.5	32
6330	<b>LONG CURVE HANDLE</b> 3-Row	349	13 3/4	25	1	25	1	20	2.7	6	100	13.5	29 3/4
6340	<b>LONG CURVE HANDLE</b> 4-Row	349	13 3/4	30	1 3/16	25	1	20	3.7	8 1/4	100	18.5	40 3/4
6350	<b>HANDLE WITH SCRAPER</b> 5-Row	286	11 1/4	48	1 7/8	25	1	10	1.8	4	100	18.0	39 1/2



## Hobby & Craft Brushes

Best quality for the "DIY'er. Top quality finishes, fast and easy. Injection-moulded plastic handles. Brass ferrules.

ITEM NO.	DESCRIPTION	SIZE	SHELF PACK	WEIGHT/PACK		MASTER PACK	WEIGHT/PACK	
				Kg	lb		Kg	lb
141	<b>HOBBY &amp; CRAFT</b> FINE RED SABLE #1, #2, #3	3 Piece	12	0.4	0.9	144	5	11
142	<b>HOBBY &amp; CRAFT</b> UTILITY ASSORTMENT BLACK BRISTLE FLAT 1/2" CAMEL HAIR FLAT 1/4", 1/2" CAMEL HAIR ROUND #2, #4	5 Piece	12	0.5	1.1	144	6	13.2
143	<b>HOBBY &amp; CRAFT</b> FINE RED SABLE #3/0, #2/0, #0	3 Piece	12	0.4	0.9	144	5	11
144	<b>HOBBY &amp; CRAFT</b> FINE RED SABLE #5/0, #0, #4, WHITE BRISTLE #10	4 Piece	12	0.5	1.1	144	6	13.2
145	<b>HOBBY &amp; CRAFT</b> FINE RED SABLE 1/4", 3/8", 1/2"	3 Piece	12	0.5	1.1	144	6	13.2
146	<b>HOBBY &amp; CRAFT</b> FINE RED SABLE #4, #5, #6	3 Piece	12	0.4	0.9	144	5	11



# Promotional Paint Brushes



[www.simms.ca](http://www.simms.ca)

ITEM NO.	DESCRIPTION	SIZE		THICKNESS		LENGTH OUT		SHELF PACK	WEIGHT/PACK		MASTER PACK	WEIGHT/PACK	
		mm	in	mm	in	mm	in		Kg	lb		Kg	lb
1972	<b>ANGULAR SASH</b> POLYESTER (Wood Handle)	38	1½	11	7/16	63	2½	10	0.5	1 1/8	600	29.9	66
		50	2	14	9/16	63	2½	10	0.6	1 ¼	300	17.7	39
		64	2½	16	5/8	76	3	10	0.9	2	240	21.8	48

2985	<b>PRO ANGULAR SASH</b> NATURAL BLACK BRISTLE (Wood Handle)	38	1½	13	½	55	2 1/8	10	0.7	1 5/8	600	43.5	96
		50	2	14	9/16	61	2 3/8	10	1.0	2 1/8	300	28.6	63
		64	2½	16	5/8	67	2 5/8	10	1.3	2 7/8	240	31.8	70
		75	3	17	11/16	83	3¼	10	1.7	3 ¾	240	41.3	91

1964	<b>PRO SELECT</b> ANGULAR SASH 3 PIECE For all paints. (Wood Handle)	38	1½	10	3/8	58	2 ¼	10	3.3	7 ¼			
		50	2	16	5/8	74	2 7/8						
		64	2½	13	½	67	2 5/8						

1400	<b>REGAL</b> WALL BRUSH 10 PIECE POLYESTER/NYLON (Plastic Handle)	2x 13	½	9	11/32	51	2	20	10	22			
		3x 25	1	11	7/16	55	2						
		3x 38	1½	12	15/32	58	2						
		2x 50	2	16	5/8	64	2						

ITEM NO.	DESCRIPTION	SIZE		THICKNESS		LENGTH OUT		SHELF PACK	WEIGHT/PACK		MASTER PACK	WEIGHT/PACK	
		mm	in	mm	in	mm	in		Kg	lb		Kg	lb
1943	<b>EASY-TRIM</b> ANGULAR BRUSH 2 PIECE POLYESTER/ NYLON (Wood Handle)	38	1½	10	3/8	58	2 ¼	20	3.6	8.0	100	18.2	40
		50	2	11	7/16	61	2 3/8						





# SIMMS

www.simms.ca

# Promotional Paint Brushes



ITEM NO.	DESCRIPTION	SIZE		THICKNESS		LENGTH OUT		SHELF PACK	WEIGHT/PACK		MASTER PACK	WEIGHT/PACK	
		mm	in	mm	in	mm	in		Kg	lb		Kg	lb
1459	<b>ULTRA GRIP</b> ANGULAR & WALL BRUSH 2 PIECE POLYESTER (Ergonomic Rubber Handle)	38	1 ½	13	½	55	2 1/8	10	1.6	3½	100	16.3	36
		50	2	16	5/8	64	2 ½						



1958	<b>STAIN &amp; WATER PROOFING SEALANTS</b> WALL BRUSH 2 PIECE POLYESTER (Plastic Handle)	50	2	14	9/16	64	2 ½	12	3.0	6 5/8	48	13.0	28 ¾
		100	4	19	¾	88	3 ½						



9817	<b>ANGULAR &amp; WALL BRUSH</b> 4 PIECE POLYESTER, (Wood Handle)	25	1	11	7/16	58	2 ¼	12	3.4	7½	48	14.1	31
		50	2	14	9/16	70	2 ¾						
		75	3	17	11/16	85	3 5/16						
		100	4	20	13/16	102	4						



9809	<b>ANGULAR SASH</b> POLYESTER (Plastic Handle)	38	1 ½	13	½	58	2 ¼	25	1.2	2 ¾	350	17.1	37 ¾
		50	2	14	9/16	64	2 ½	20	1.3	2 7/8	360	23.7	52 ¼



9810	<b>WALL BRUSH</b> POLYESTER (Plastic Handle)	25	1	12	15/32	55	2 1/8	32	1.2	2 ¾	480	18.1	40
		50	2	14	9/16	64	2 ½	20	1.0	2 ¼	360	18.1	40
		75	3	17	11/16	77	3	12	1.1	2 ½	120	11.3	25



# Promotional Paint Brushes



www.simms.ca

ITEM NO.	DESCRIPTION	SIZE		THICKNESS		LENGTH OUT		SHELF PACK	WEIGHT/PACK		MASTER PACK	WEIGHT/PACK	
		mm	in	mm	in	mm	in		Kg	lb		Kg	lb
9811	<b>WALL BRUSH</b>	25	1	12	$\frac{15}{32}$	55	$2\frac{1}{8}$	12	2.0	4½	72	11.8	26
	3 PIECE POLYESTER	50	2	14	$\frac{9}{16}$	64	$2\frac{1}{2}$						
	(Plastic Handle)	75	3	17	$\frac{11}{16}$	77	3						



9812	<b>ANGULAR &amp; WALL BRUSH</b>	25	1	12	$\frac{15}{32}$	55	$2\frac{1}{8}$	12	2.7	6	48	10.9	24
		38	$1\frac{1}{2}$	13	$\frac{1}{2}$	58	$2\frac{1}{4}$						
	4 PIECE POLYESTER	50	2	14	$\frac{9}{16}$	64	$2\frac{1}{2}$						
	(Plastic Handle)	75	3	17	$\frac{11}{16}$	77	3						



9813	<b>ANGULAR &amp; WALL BRUSH</b>	38	$1\frac{1}{2}$	13	$\frac{1}{2}$	58	$2\frac{1}{4}$	12	1.5	$3\frac{3}{8}$	48	6.8	15
		50	2	14	$\frac{9}{16}$	64	$2\frac{1}{2}$						
	2 PIECE POLYESTER												
	(Plastic Handle)												



9815	<b>WALL BRUSH</b>	25	1	12	$\frac{15}{32}$	50	2	12	2.1	$4\frac{5}{8}$	72	12.6	$27\frac{3}{4}$
	3 PIECE POLYESTER	50	2	14	$\frac{9}{16}$	64	$2\frac{1}{2}$						
	(Wood Handle)	75	3	17	$\frac{11}{16}$	74	$2\frac{7}{8}$						



9915	<b>WALL BRUSH</b>	25	1	12	$\frac{7}{16}$	58	$2\frac{1}{4}$	12	2.0	4½	72	11.8	26
	3 PIECE	50	2	14	$\frac{9}{16}$	64	$2\frac{1}{2}$						
	BRISTLE/ POLYESTER	75	3	16	$\frac{5}{8}$	70	$2\frac{3}{4}$						
	(Wood Handle)												



## Features of a Quality Roller Refill

Phenolic( cardboard treated with phenol resin for strength) is impervious to strong solvent based coatings, so can be cleaned and reused several times.

Polypropylene core has two layers creating a strong reusable core.

Reinforced liquid polypropylene core and fabric are fused as one, creating a strong, solvent resistant paint roller.

High grade adhesive bonds fabric to core.

Top quality rollers undergo extra combing and vacuuming to eliminate seams and loose fibers.



Superior quality synthetic fabric blend formulations include:  
softness for smooth finishes  
and high density for  
maximum paint carrying  
(less paint loading).

Top quality fabrics will release paint evenly and not mat.

Beveled (tapered) ends prevent splattering and paint build up on edges. Makes "cutting in" easier.

WHAT PILE TO USE?		<i>Depends on the gloss (sheen) of the paint and the roughness (texture) of the surface</i>
PILE HEIGHT	SURFACE TEXTURE	
6mm (¼")	<b>SMOOTH SURFACES:</b>	Untextured plaster, drywall, wood, metal doors
10mm (⅜")	<b>SEMI-SMOOTH SURFACES:</b>	Light or no texture plaster, drywall, wood, most walls and ceilings
13mm-15mm (½")	<b>SEMI-ROUGH SURFACES:</b>	Light stucco or textured surfaces (sand finishes), ceiling tiles, semi-rough plaster or wood surfaces.
19mm-25mm (¾"-1")	<b>ROUGH SURFACES:</b>	Concrete block, textured ceilings, rough plaster and stucco, masonry floors, asphalt driveway sealers, roof coatings and chain link fences
31mm (1 ¼")	<b>EXTRA ROUGH SURFACES:</b>	Concrete block, brick, deep textures or stucco, decorative plaster, chain link fences and roof coatings



ITEM NO.	SURFACE DESIGNATION	SIZE		PILE DEPTH		DIAMETER		SHELF PACK	WEIGHT/PACK	
		mm	in	mm	in	mm	in		Kg	lb

## Vintage® Pro Handcrafted Professional Series

- These high quality roller refills are hand assembled, finished and tested with a caring attention to detail so that professional painters can count on a smooth, consistent and superior roller performance, time after time.
- Advanced fabric blends undergo extra cleaning and finishing to provide the ultimate painting results.
- Perfect bevelled ends for finer finishes.
- Cores resistant to water and strong solvents.
- Full selection of pile heights for every surface.

### Sure-Fine®

*Woven, shed-resistant three fibre blend formulation with identifying blue & gold pinstripes. Holds more paint than regular woven rollers. Effortless application and superior release for "lint free" paint application. The ultimate professional fine finishing roller. 6mm pile ideal for semi-gloss and high gloss paints. 10mm pile ideal for flat, low sheen and semi-gloss paints. 15mm pile for use with flat and low sheen paints. 19mm pile for flat paints. Heavy-duty phenolic core. Ideal for today's low VOC paints.*

R-820	<b>SMOOTH</b>	240	9 ½	6	¼	38	1 ½	30	2.6	5 ¾
R-821	<b>SMOOTH &amp; SEMI-SMOOTH</b>	240	9 ½	10	⅜	38	1 ½	25	2.4	5 ¼
R-822	<b>SEMI-SMOOTH &amp; SEMI-ROUGH</b>	240	9 ½	15	½	38	1 ½	25	2.4	5 ¼
R-823	<b>SEMI-ROUGH &amp; ROUGH</b>	240	9 ½	19	¾	38	1 ½	16	1.8	4



## Elite Professional Plus

*"Elite Professional Plus" High density, shed-resistant woven fabric provides a fine lint free finish. Paint pick-up and release is superior to regular woven rollers making painting easier. 6mm pile ideal for semi-gloss and high gloss paints. 10mm pile ideal for flat, low sheen and semi-gloss paints. 15mm pile for use with flat and low sheen paints. 19mm pile for flat paints. Solvent resistant polypropylene core. Ideal for today's low VOC paints.*

R-780	<b>SMOOTH</b>	240	9 ½	6	¼	38	1 ½	30	2.3	5
R-781	<b>SMOOTH &amp; SEMI-SMOOTH</b>	240	9 ½	10	⅜	38	1 ½	30	2.6	5 ¾
R-782	<b>SEMI-SMOOTH &amp; SEMI-ROUGH</b>	240	9 ½	15	½	38	1 ½	25	2.1	4 ⅝
R-783	<b>SEMI-ROUGH &amp; ROUGH</b>	240	9 ½	19	¾	38	1 ½	20	1.8	4

4728	<b>SMOOTH &amp; SEMI-SMOOTH</b> 2 Pack	240	9 ½	10	⅜	38	1 ½	12	1.3	2 ¾
4729	<b>SEMI-SMOOTH &amp; SEMI-ROUGH</b> 2 Pack	240	9 ½	15	½	38	1 ½	12	1.5	3 ¼



ITEM NO.	SURFACE DESIGNATION	SIZE		PILE DEPTH		DIAMETER		SHELF PACK	WEIGHT/PACK	
		mm	in	mm	in	mm	in		Kg	lb

## Golden Touch Superior Performance Series

**"Microfiber Technology"** fabric blend for a superior painting performance. Provides extremely fine, consistent finishes when rolling in either direction with low splatter and low lint application. Paint pick up and coverage is excellent along with being very durable. 6mm pile ideal for semi-gloss and high gloss paints. 10mm pile ideal for flat, low sheen and semi-gloss paints. 15mm pile for use with flat and low sheen paints and 19mm pile recommended for flat paints. Solvent resistant polypropylene core.

R-700	SMOOTH	240	9 ½	6	¼	38	1 ½	30	2.5	5 ½
R-701	SMOOTH & SEMI-SMOOTH	240	9 ½	10	¾	38	1 ½	30	2.5	5 ½
R-702	SEMI-SMOOTH & SEMI-ROUGH	240	9 ½	15	½	38	1 ½	25	2.0	4 ½
R-703	SEMI-ROUGH & ROUGH	240	9 ½	19	¾	38	1 ½	20	2.0	4 ½

4709	SMOOTH & SEMI-SMOOTH 2 Pack	240	9 ½	10	¾	38	1 ½	12	1.3	2 ¾
4710	SEMI-SMOOTH & SEMI-ROUGH 2 Pack	240	9 ½	15	½	38	1 ½	12	1.5	3 ¼

4711	SMOOTH & SEMI-SMOOTH 3 Pack	240	9 ½	10	¾	38	1 ½	24	6.1	13 ½
4712	SEMI-SMOOTH & SEMI-ROUGH 3 Pack	240	9 ½	15	½	38	1 ½	23	6	13.3

## Professional

**Polylamb®**. High density, knitted polyester and nylon fabric blend. High paint carrying capacity. Ideal for applications where coverage is required such as drywall priming, painting on particle board, plywood, masonry surfaces and other exterior jobs. 6mm pile for all flat, low sheen and semi-gloss latex paints or flat and low sheen oil paints. 10mm for flat and low sheen paints. 13mm to 31mm piles for all flat paints. Solvent resistant polypropylene core.

R-678	SMOOTH	240	9 ½	6	¼	38	1 ½	30	2.3	5
R-679	SMOOTH & SEMI-SMOOTH	240	9 ½	10	¾	38	1 ½	25	2.1	4 ⅝
R-680	SEMI-ROUGH	240	9 ½	13	½	38	1 ½	20	1.8	4
R-681	SEMI-ROUGH	240	9 ½	19	¾	38	1 ½	16	1.4	3
R-683	ROUGH	240	9 ½	31	1 ¼	38	1 ½	16	1.8	4

### Pro Packs

R-669	SMOOTH & SEMI-SMOOTH	240	9 ½	10	¾	38	1 ½	10	8.4	18 ½
R-670	SEMI-ROUGH	240	9 ½	13	½	38	1 ½	10	9.1	20
R-671	SEMI-ROUGH & ROUGH	240	9 ½	19	¾	38	1 ½	10	6.8	15





ITEM NO.	SURFACE DESIGNATION	SIZE		PILE DEPTH		DIAMETER		SHELF PACK	WEIGHT/PACK	
		mm	in	mm	in	mm	in		Kg	lb

## Professional

**"Lint Free".** Best quality, shed-resistant woven fabric blend. Provides exceptionally smooth finishes. 6mm pile ideal for semi-gloss and high gloss paints. 10mm pile ideal for flat, low sheen and semi-gloss paints. 15mm pile for use with flat and low sheen paints. 19mm pile for flat paints. Solvent resistant polypropylene core.

R-600	SMOOTH	190	7 ½	6	¼	38	1 ½	30	1.4	3
R-601	SMOOTH & SEMI-SMOOTH	190	7 ½	10	¾	38	1 ½	30	1.5	3 ¼
R-620	SMOOTH	240	9 ½	6	¼	38	1 ½	30	2.3	5
R-621	SMOOTH & SEMI-SMOOTH	240	9 ½	10	¾	38	1 ½	30	2.6	5 ¾
R-622	SEMI-SMOOTH & SEMI-ROUGH	240	9 ½	15	½	38	1 ½	25	2.1	4 ⅝
R-623	SEMI-ROUGH	240	9 ½	19	¾	38	1 ½	20	1.8	4

### Pro Packs

R-631	SMOOTH & SEMI-SMOOTH 10 Pack	240	9 ½	10	¾	38	1 ½	10	8.4	18 ½
R-632	SEMI-SMOOTH & SEMI-ROUGH 10 Pack	240	9 ½	15	½	38	1 ½	10	8.6	19
R-633	SEMI-ROUGH 10 Pack	240	9 ½	19	¾	38	1 ½	10	9.1	20
4703	SMOOTH & SEMI-SMOOTH 3 Pack	240	9 ½	10	¾	38	1 ½	24	3.8	8 ⅜
4707	SEMI-SMOOTH & SEMI-ROUGH 3 Pack	240	9 ½	15	½	38	1 ½	23	4	8 ⅞

### Lint Free refills.

4885	SMOOTH	450	18	6	¼	38	1 ½	10	1.5	3 ¼
4886	SMOOTH & SEMI-SMOOTH	450	18	10	¾	38	1 ½	10	1.8	4
4887	SEMI-SMOOTH & SEMI-ROUGH	450	18	15	½	38	1 ½	10	2	4 ½

## General Purpose

Better quality knitted polyester fabric. Moderately priced. Excellent coverage. 6mm pile for all flat, low sheen and semi-gloss latex paints or flat and low sheen oil paints. 10mm for flat and low sheen paints. 13mm to 31mm piles for all flat paints. Solvent resistant polypropylene core.

R-150	SMOOTH	190	7 ½	6	¼	38	1 ½	30	1.5	3 ¼
R-120	SMOOTH & SEMI-SMOOTH	190	7 ½	10	¾	38	1 ½	25	1.4	3
R-151	SMOOTH	240	9 ½	6	¼	38	1 ½	30	2.1	4 ⅝
R-121	SMOOTH & SEMI-SMOOTH	240	9 ½	10	¾	38	1 ½	25	1.8	4
R-175	SEMI-ROUGH	240	9 ½	13	½	38	1 ½	20	1.6	3 ½
R-177	SEMI-ROUGH	240	9 ½	19	¾	38	1 ½	16	1.4	3
R-179	ROUGH	240	9 ½	31	1 ¼	38	1 ½	16	1.6	3 ½



ITEM NO.	SURFACE DESIGNATION	SIZE		PILE DEPTH		DIAMETER		SHELF PACK	WEIGHT/PACK	
		mm	in	mm	in	mm	in		Kg	lb

## Econo Grade

Good quality knitted polyester fabric. Excellent for flat latex paints on surfaces where a fine finish is not required. Solvent resistant polypropylene core.

R-161	SMOOTH & SEMI-SMOOTH	240	9 1/2	10	3/8	38	1 1/2	25	1.6	3 1/2
R-456 (2 pack)	SMOOTH & SEMI-SMOOTH	240	9 1/2	10	3/8	38	1 1/2	12	1.6	3 1/2

## Specialty

100% nylon fabric. Fabric, adhesive and core bond together for use with strong solvent-based coatings. Use with epoxy, fiberglass resins, texture coatings, moisture cure urethane varnishes and adhesives. Solvent resistant polypropylene core.

R-890		240	9 1/2	5	3/16	38	1 1/2	30	2.7	6
-------	--	-----	-------	---	------	----	-------	----	-----	---

Foam. Good quality, spiral wound. Single-use. Ideal for applying oil based semi-gloss and high gloss paints, melamine, urethanes, stains and varnishes. Not recommended for use with lacquer or shellac. Solvent resistant polypropylene core.

R-200 (2 pack)	SMOOTH	240	9 1/2	3	1/8	38	1 1/2	18	1.6	3 1/2
----------------	--------	-----	-------	---	-----	----	-------	----	-----	-------

Foam. Better quality, spiral wound. Ideal for applying oil based semi-gloss and high gloss paints, melamine, urethanes, stains and varnishes. Not recommended for use with lacquer or shellac. Phenolic core.

R-196	SMOOTH	240	9 1/2	3	1/8	38	1 1/2	36	1.6	3 1/2
-------	--------	-----	-------	---	-----	----	-------	----	-----	-------

Foam. Best quality, thicker and seamless. Ideal for use with oil based semi-gloss and high gloss paints, melamine, urethanes, stains and varnishes. Not recommended for use with lacquer or shellac. Plastic core.

R-211	SMOOTH	240	9 1/2	10	3/8	38	1 1/2	25	1.6	3 1/2
-------	--------	-----	-------	----	-----	----	-------	----	-----	-------

Slit-Foam. The foam contains slits to contour around uneven surfaces. Ideal for painting stucco, brick, cinder block, cement floors and acoustical ceilings. Not recommended for use with lacquer or shellac. Plastic core.

R-216	UNEVEN SURFACES	240	9 1/2	19	3/4	38	1 1/2	15	1.1	2 3/8
-------	-----------------	-----	-------	----	-----	----	-------	----	-----	-------

Mocryl® Fabric. For fine finishes. Use with semi-gloss and high gloss paints, enamels, varnishes, melamine, marine finishes, adhesives and liquid fiberglass. Solvent resistant polypropylene core.

R-221	SMOOTH	240	9 1/2	6	1/4	38	1 1/2	36	2.5	5 1/2
-------	--------	-----	-------	---	-----	----	-------	----	-----	-------

Stucco. For textured paints. Ideal for creating stucco, heavy textured looks and specialty faux finishes. Solvent resistant polypropylene core.

R-223	TEXTURED	240	9 1/2	10	3/8	38	1 1/2	25	2.3	5
-------	----------	-----	-------	----	-----	----	-------	----	-----	---

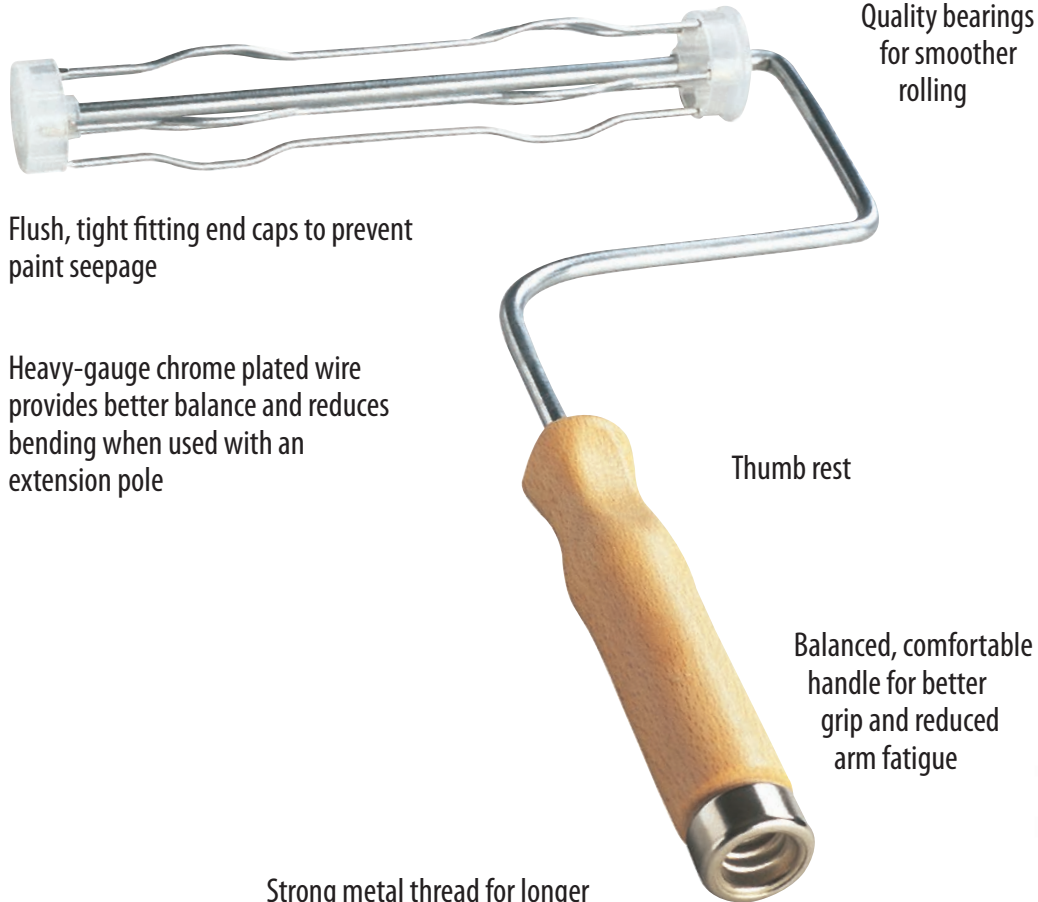
Driveway Sealer Applicator. Three Piece roller coater for applying driveway sealers. Consists of good quality knitted polyester fabric refill, "D.I.Y." roller frame and 48" wooden extension pole. Single-use. Replacement refill also available. Solvent resistant polypropylene core.

DA-4551	APPLICATOR	240	9 1/2	19	3/4	38	1 1/2	10	5.0	11
R-471	REFILL	240	9 1/2	19	3/4	38	1 1/2	16	1.3	2 7/8

## Features of a Quality Roller Frame

Two tension bends to keep refill securely on frame, no "creeping" (sliding-off)

5-wire cage design for easy refill on/off attachment



Flush, tight fitting end caps to prevent paint seepage

Heavy-gauge chrome plated wire provides better balance and reduces bending when used with an extension pole

Quality bearings for smoother rolling

Thumb rest

Balanced, comfortable handle for better grip and reduced arm fatigue

Strong metal thread for longer life with extension pole use

**Remember, a better quality roller frame will be more comfortable to hold, roll smoother and last longer.**



ITEM NO.	SURFACE DESIGNATION	SIZE mm	in	DIAMETER mm	in	SHELF PACK	WEIGHT/PACK Kg	lb
----------	---------------------	------------	----	----------------	----	---------------	-------------------	----

## Professional

*Unique single-wire, chrome-plated roller frame. Balanced design and light tubular construction reduce "arm fatigue". Can be used with standard 38mm (1 ½") diameter roller refills. Comfortable ergonomic rubber grip. Threaded for use with extension poles. Set of end bearings included with frame.*

F-2200	<b>ROL-TEK® PRO FRAME</b>	240	9 ½	38	1 ½	6	2.7	6
A-2265	<b>ROL-TEK® END BEARINGS</b> (For F-2200 Frame)			38	1 ½	12	0.2	½

*Heavy-duty 8mm (5/16") chrome-plated steel shank, reduces bending when using with an extension pole. Heavy gauge 3.8mm five wire cage assembly. Available in both natural hardwood and injection-moulded plastic handles with metal insert or grommet for extra strength. Threaded for use with extension poles.*

F-115	<b>PRO CAGE FRAME, 5-WIRE</b> Wood Handle Metal Threads with Grommet	240	9 ½	38	1 ½	10	4.1	9
-------	--	-----	-----	----	-----	----	-----	---

F-113	<b>PRO CAGE FRAME, 5-WIRE</b> Plastic Handle Metal Grommet	240	9 ½	38	1 ½	10	3.7	8 ¼
-------	--	-----	-----	----	-----	----	-----	-----

*Heavy-duty 8mm (5/16") chrome-plated steel shank, reduces bending when using with an extension pole. Two tension bends on five wire cage assembly to prevent refill creeping. Available in both natural hardwood and injection-moulded plastic handles with metal insert or grommet for extra strength. Threaded for use with extension poles.*

F-115i	<b>PRO CAGE FRAME, 5-WIRE</b> Wood Handle Metal Threads with Grommet	240	9 ½	38	1 ½	10	4.5	9 7/8
--------	--	-----	-----	----	-----	----	-----	-------

F-113i	<b>PRO CAGE FRAME, 5-WIRE</b> Plastic Handle Metal Grommet	240	9 ½	38	1 ½	10	4.1	9
--------	--	-----	-----	----	-----	----	-----	---

## Professional

F-160	<b>ADJUSTABLE FRAME</b>	450	18	38	1 ½	6	4.5	10
	Adjustable frame for 18" roller refills. Comfortable ergonomic rubber grip. Threaded for use with extension pole. Set of end caps included.							

4883	<b>ROLLER END CAPS</b>			38	1 ½	20	0.2	½
------	------------------------	--	--	----	-----	----	-----	---

# Roller Frames



www.simms.ca

ITEM NO.	SURFACE DESIGNATION	SIZE		DIAMETER		SHELF PACK	WEIGHT/PACK	
		mm	in	mm	in		Kg	lb

## "D.I.Y."

Sturdy 6.4mm (1/4") chrome-plated steel shank. Lightweight aluminum handle which extends up to a length of 71 cm (28") eliminating use of extension pole. For simple "DIY"er household painting jobs.

F-185	EXTENDABLE HANDLE CAGE FRAME, 5-WIRE Aluminum Handle	240	9 1/2	38	1 1/2	12	4.1	9
-------	---	-----	-------	----	-------	----	-----	---



Sturdy 6.4mm (1/4") galvanized steel shank. Two tension bends on five wire cage assembly to prevent refill creeping. Available in two unique Simms comfort design injection-moulded plastic handle designs. Threaded for use with extension poles.

F-194	PREMIER QUALITY CAGE FRAME, 5-WIRE Plastic Handle	240	9 1/2	38	1 1/2	20	5.7	12 1/4
-------	--	-----	-------	----	-------	----	-----	--------

F-191	GENERAL PURPOSE CAGE FRAME, 5-WIRE Plastic Handle	240	9 1/2	38	1 1/2	10	5.2	11 1/2
-------	--	-----	-------	----	-------	----	-----	--------

F-190	GENERAL PURPOSE CAGE FRAME, 5-WIRE Plastic Handle	190	7 1/2	38	1 1/2	10	4.1	9
-------	--	-----	-------	----	-------	----	-----	---



Economically priced. Sturdy 6.4mm (1/4") chrome-plated steel shank. Plastic handle threaded for use with extension poles. Lightweight for "DIY"er use.

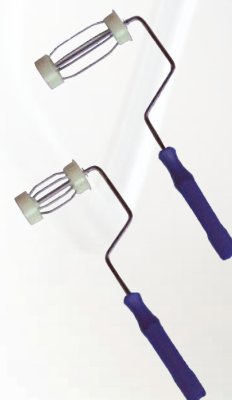
F-189	CONSUMER CAGE FRAME, 4-WIRE Plastic Handle	240	9 1/2	38	1 1/2	10	2.7	6
-------	--	-----	-------	----	-------	----	-----	---



Excellent quality trim roller cage frames with plastic handles threaded for extension pole use. Fits standard 38mm (1 1/2") diameter trim roller refills.

A-094	TRIM CAGE FRAME, 4-WIRE Plastic Handle	100	4	38	1 1/2	24	4.1	9
-------	--	-----	---	----	-------	----	-----	---

A-053	TRIM CAGE FRAME, 4-WIRE Plastic Handle	75	3	38	1 1/2	24	3.6	8
-------	--	----	---	----	-------	----	-----	---



## Features of a Quality Roller Tray

- Constructed of tough polypropylene plastic that will not rust and resists all common paint solvents
- Deep well design for large paint capacity
- Wide roll-out grid that covers full width of roller and distributes paint evenly, eliminating skidding



**LADDER-MATE®**

Unique integral leg design gives rigid support to the tray for use on a ladder or floor. Eliminates leg breakage. Leg notches firmly grip a wide range of step ladders.



Perfectly-fitting tray liners mean no more messy clean-ups and colour changes are as simple as changing liners.

**ROLL WITH  
CONFIDENCE**

## JUMBO PLASTIC TRAY

- Extra deep to hold more paint and prevent spills
- Extremely sturdy and easy to shift while on floor without tipping
- Hand slots for stable tray carrying
- A real paint contractor favourite





**The most popular professional roller tray in Canada!**

## Includes Jumbo Paint Roller Tray, Tray Liner and Tray Cover and works with the Simms TRAYARM lifting tool

### **(A) T-2015 JUMBO TRAY COVER**

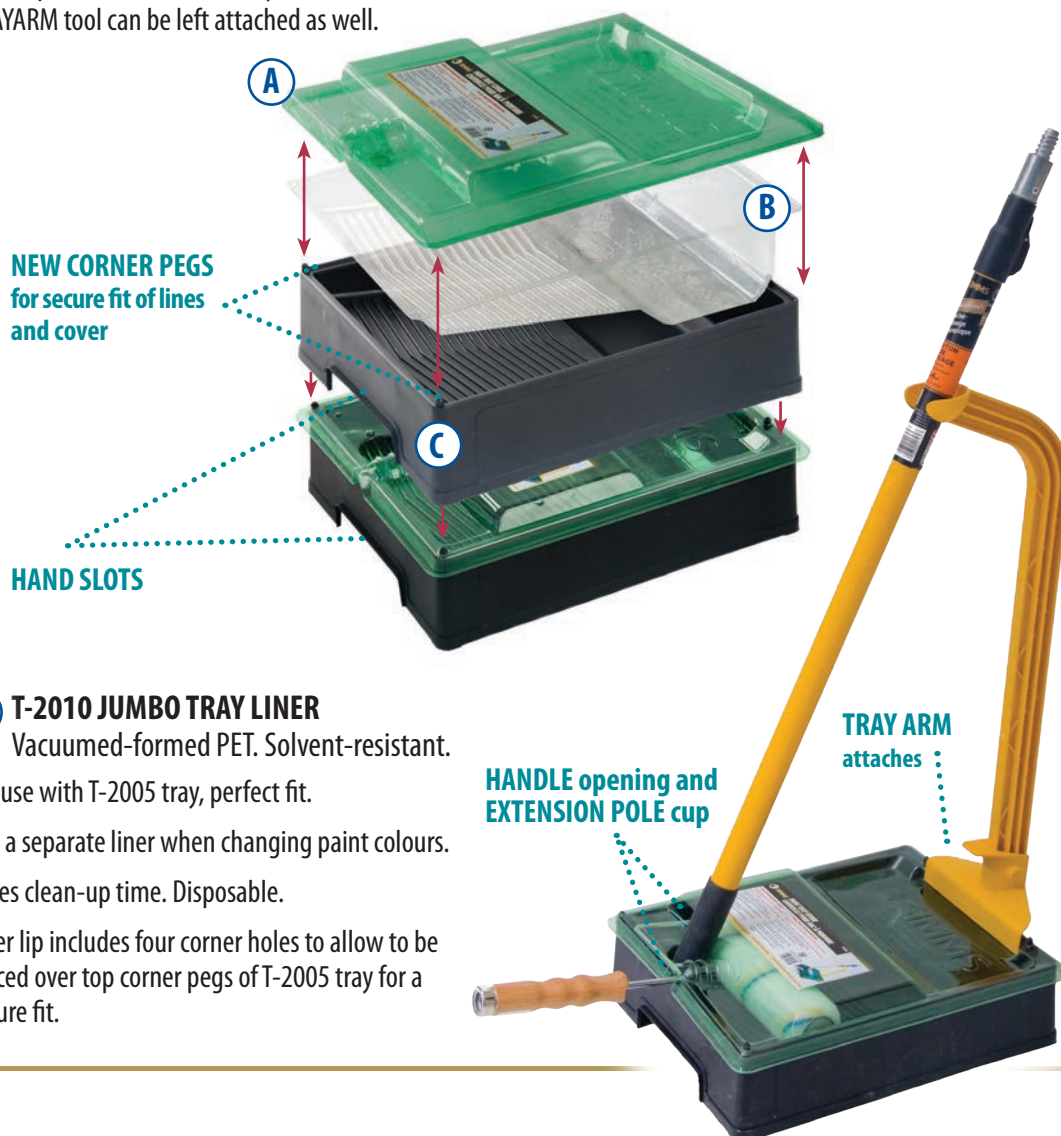
Vacuumed-formed PET.

- **Your environmental choice!** Reduces clean-up time and disposal of paint into the environment.
- For use with T-2005 tray, designed to allow 2nd paint tray to be stacked onto cover for convenient storage.
- Keeps paint and roller fresh during painting breaks or even overnight.
- Accommodates up to a wet 1¼ (31mm) pile roller.
- Opening for handle so that roller and cage frame can be left in tray under the cover.
- Extension pole may be rested in cup-like holder and stood up in the TRAYARM, safely off the floor. Simms TRAYARM tool can be left attached as well.

### **(C) T-2005 JUMBO ROLLER TRAY**

Constructed of IMPACT RESISTANT RECYCLED POLYPROPYLENE plastic that will not rust and resists common paint solvents.

- DEEP-WELL DESIGN to hold more paint and prevent paint spills (3.5quart (L) paint capacity).
- WIDE ANTI-SKID GRID covers full width of roller and distributes paint evenly.
- HAND SLOTS for stable tray carrying.
- Designed to be USED FROM THE FLOOR in conjunction with a roller and extension pole.
- NEW CORNER PEGS allow for a secure fit of tray liner and cover.

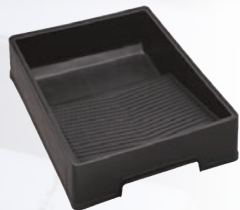


### **(B) T-2010 JUMBO TRAY LINER**

Vacuumed-formed PET. Solvent-resistant.

- For use with T-2005 tray, perfect fit.
- Use a separate liner when changing paint colours.
- Saves clean-up time. Disposable.
- Liner lip includes four corner holes to allow to be placed over top corner pegs of T-2005 tray for a secure fit.

ITEM NO.	DESCRIPTION	ROLLER SIZE		CAPACITY		SHELF PACK	WEIGHT/PACK	
		mm	in	l	qt		Kg	lb



Impact resistant recycled polypropylene. Resistant to solvents. Patented deep-well design to hold more paint and prevent spills. Anti-skid grid controls the amount of paint on roller for even painting results. Designed to be used from the floor in conjunction with a roller and extension pole. Excellent for large surface painting jobs. The professional painter's choice.

T-2005	<b>JUMBO PROFESSIONAL</b> Plastic Roller Tray	240	9 ½	4	4	10	7.9	17 ½
--------	--	-----	-----	---	---	----	-----	------



Vacuum-formed PET. Disposable. Use a separate liner when changing paint colours on the same project. Saves clean-up time. For use with T-2005 tray. Solvent resistant. Contains a high percentage of recycled plastic

T-2010	<b>JUMBO PROFESSIONAL</b> Plastic Tray Liner	240	9 ½	4	4	50	3.4	7 ½
--------	---	-----	-----	---	---	----	-----	-----



Vacuum-formed PET. For use with Simms T-2005 tray to keep paint fresh during breaks and overnight. Helps to reduce clean-up time and disposal of paint into the environment. Includes opening for handle so that roller and cage frame can be left assembled under cover. Contains a high percentage of recycled plastic

T-2015	<b>JUMBO PROFESSIONAL</b> Plastic Tray Cover					25	1.6	3 ½
--------	---	--	--	--	--	----	-----	-----



Impact resistant recycled polypropylene. Resistant to solvents. Patented high wall, anti-skid grid and ladder leg lock design. Use on a ladder or on the floor. Another paint contractor's favourite.

T-160	<b>LADDER-MATE®</b> Plastic Roller Tray	240	9 ½	2	2	10	3.4	7 ½
-------	--	-----	-----	---	---	----	-----	-----



Vacuum-formed PET. Disposable. Use a separate liner when changing paint colours on the same project. Saves clean-up time. For use with T-160 tray. Solvent resistant. Contains a high percentage of recycled plastic

T-165	<b>LADDER-MATE®</b> Plastic Tray Liner	240	9 ½	2	2	50	2.2	4 7/8
-------	---	-----	-----	---	---	----	-----	-------



Impact resistant recycled polypropylene. Resistant to solvents. Smaller capacity design.

T-150	<b>GENERAL PURPOSE</b> Plastic Roller Tray	240	9 ½	1	1	20	4.8	10 ½
-------	---	-----	-----	---	---	----	-----	------



Vacuum-formed PET. Disposable. Use a separate liner when changing paint colours on the same project. Saves clean-up time. For use with T-150 tray. Solvent resistant. Contains a high percentage of recycled plastic

T-155	<b>GENERAL PURPOSE</b> Plastic Tray Liner	240	9 ½	1	1	50	2.1	4 5/8
-------	--	-----	-----	---	---	----	-----	-------

# Rollers Trays & Liners

ITEM NO.	DESCRIPTION	ROLLER SIZE		CAPACITY		SHELF PACK	WEIGHT/PACK	
		mm	in	l	qt		Kg	lb

*Solvent Resistant PET Plastic For use with 18" Rollers. Extra large well holds more paint than similar size trays.*

T-410	<b>INDUSTRIAL ROLLER TRAY</b>	450	18	5	5	6	2.7	6
-------	-------------------------------	-----	----	---	---	---	-----	---



*Heavy gauge plated steel. Ribbed bottom. Ladder-hook legs. For painting from floor or ladder. Large paint capacity for big surface painting jobs. Excellent for strong solvent coatings.*

T-300	<b>JUMBO PROFESSIONAL</b> Metal Roller Tray	240	9 ½	4	4	10	10.9	24
-------	--	-----	-----	---	---	----	------	----



*Vacuumed-formed PET. Disposable. Use a separate liner when changing paint colours on the same project. Saves clean-up time. For use with T-300 tray. Solvent resistant. Contains a high percentage of recycled plastic*

T-320	<b>JUMBO PROFESSIONAL</b> Plastic Tray Liner	240	9 ½	4	4	50	3.6	8
-------	---	-----	-----	---	---	----	-----	---



*Heavy-duty plated steel. Ribbed bottom. Ladder-hook legs. Medium level paint capacity. Solvent resistant.*

T-225	<b>DEEP WELL</b> Metal Roller Tray	240	9 ½	2	2	10	5.0	11
-------	---------------------------------------	-----	-----	---	---	----	-----	----



*Vacuumed-formed PET. Disposable. Use a separate liner when changing paint colours on the same project. Saves clean-up time. For use with T-225 tray. Solvent resistant. Contains a high percentage of recycled plastic*

T-245	<b>DEEP WELL</b> Plastic Tray Liner	240	9 ½	2	2	50	2.7	6
-------	--	-----	-----	---	---	----	-----	---



*Smaller, easy to move steel tray. Ribbed bottom. Ladder-hook legs. Solvent resistant.*

T-175	<b>"D.I.Y."</b> Metal Roller Tray	240	9 ½	1	1	20	11.8	26
-------	--------------------------------------	-----	-----	---	---	----	------	----



*Vacuumed-formed PET. Disposable. Use a separate liner when changing paint colours on the same project. Saves clean-up time. For use with T-175 tray. Solvent resistant. Contains a high percentage of recycled plastic*

T-195	<b>"D.I.Y."</b> Plastic Tray Liner	240	9 ½	1	1	50	2.3	5
-------	---------------------------------------	-----	-----	---	---	----	-----	---





ITEM NO.	DESCRIPTION	SIZE		PILE DEPTH		DIAMETER		SHELF PACK	WEIGHT/PACK	
		mm	in	mm	in	mm	in		Kg	lb

## Professional

"Lint Free". Pro quality set. Contains 2L (2 qt.) capacity Ladder-Mate® plastic roller tray (T-160), 5-wire roller cage frame and one shed-resistant woven fabric blend roller refill for fine finishes. Use with all paints. Ideal for flat, low sheen and semi-gloss paints on smooth and semi-smooth surfaces.

S-421	<b>ROLLER SET 3 PIECE</b> (Tray, Frame & Refill)	240	9 ½	10	¾	38	1 ½	10	7.3	16
-------	---	-----	-----	----	---	----	-----	----	-----	----



## General Purpose

Better quality set. Moderately priced. Contains 1L (1 qt.) plastic roller tray (T-150), 5-wire roller cage frame and one general purpose polyester knitted fabric roller refill. Excellent coverage. Use with all flat and low sheen paints on smooth and semi-smooth surfaces.

S-960	<b>ROLLER SET 3 PIECE</b> (Tray, Frame & Refill)	240	9 ½	10	¾	38	1 ½	16	8.2	18
-------	---	-----	-----	----	---	----	-----	----	-----	----



## Econo Grade

Good quality set. For basic painting where a fine finish is not required. Contains 1L (1qt.) plastic roller tray (T-150), 5-wire roller cage frame and one single-use polyester knitted fabric roller refill. Use with flat latex paints on smooth and semi-smooth surfaces.

S-950	<b>ROLLER SET 3 PIECE</b> (Tray, Frame & Refill)	240	9 ½	10	¾	38	1 ½	16	8.2	18
-------	---	-----	-----	----	---	----	-----	----	-----	----



**WORK SMARTER NOT HARDER**

A great painter's tool designed to make the job easier. Eases back and leg strain by eliminating the need to bend over to move or pick up a roller tray. Safely and visibly holds a paint roller on an extension pole in an upright position during painting breaks instead of disassembled or lying flat on the floor avoiding paint spills and accidents. Convenient for carrying a paint tray over furniture, up and down staircases, through doors and other narrow spaces with the ease of one hand. The tool affixes to the bottom of the Simms T-2005 tray for a secure lock. The adjustable clamp can be used to secure other types of trays (both metal & plastic).

A-2007	<b>TRAY ARM</b> Paint Tray Lifting Tool & Organizer							10	7.4	16
--------	--	--	--	--	--	--	--	----	-----	----



# Extension Poles



www.simms.ca

ITEM NO.	DESCRIPTION	Length	Diameter mm	in	SHELF PACK	WEIGHT/PACK Kg	lb	MASTER PACK	WEIGHT/PACK Kg	lb
----------	-------------	--------	----------------	----	---------------	-------------------	----	----------------	-------------------	----

## Pro Everlok



Strong, sturdy and lightweight anodized aluminum extension poles. Non slip and non stick surface prevents paint buildup. Double grooved variable positive locking allows for adjustment to any length and prevents pole from twisting. Large foam handle for relaxed comfort and heavy duty aluminum threaded tip. Patent Pending.

A-2064	TELESCOPIC	0.3m-0.6m	1'-2'	25	1	6	0.9	2
A-2065	TELESCOPIC	0.6m-1.2m	2'-4'	25	1	6	1.5	3.4
A-2066	TELESCOPIC	0.9m-1.8m	3'-6'	25	1	6	2.3	5.1
A-2067	TELESCOPIC	1.2m-2.4m	4'-8'	25	1	6	2.7	5.9
A-2068	TELESCOPIC	1.2m-3.6m	4'-12'	25	1	4	3.0	6.5
A-2069	TELESCOPIC	1.8m-5.4m	6'-18'	25	1	4	5.4	11.8

## Professional Quality



Push Button-Lock, Fiberglass / Aluminum. Exterior fiberglass pole with slot-locking aluminum inner tube. Push button (thumb release) mechanism that locks positions in 6 inch increments.

A-2054	TELESCOPIC	0.3m-0.6m	1'-2'	32	1.25	6	2.5	5.5
A-2055	TELESCOPIC	0.6m-1.2m	2'-4'	32	1 ¼	6	3.3	7.3
A-2056	TELESCOPIC	0.9m-1.8m	3'-6'	32	1 ¼	6	4.4	9.6
A-2057	TELESCOPIC	1.2m-2.4m	4'-8'	32	1 ¼	6	5.4	11.8
A-2058	TELESCOPIC	1.8m-3.6m	6'-12'	32	1 ¼	6	7.5	16.5
A-2059	TELESCOPIC	2.4m-4.8m	8'-16'	32	1 ¼	6	10.7	23.5

## "D.I.Y."

Lightweight and non-corrosive telescopic aluminum extension pole. Plastic tip.  
Fast and easy length adjustment with a turn lock. Threaded for standard use with roller frames.

A-2040	TELESCOPIC	106-180cm	42"-72"	25	1	10	5.0	11
--------	------------	-----------	---------	----	---	----	-----	----

High quality hardwood threaded tip extension pole for use with any standard roller frame.

6714	ONE-PIECE THREADED	135cm	54"	23	15/16	1	0.4	1	50	19.4	42 ¾
------	-----------------------	-------	-----	----	-------	---	-----	---	----	------	------

High quality hardwood tapered end (no threads) extension pole. Use with Junco roofing brush. (Simms #5920).

6829	ONE-PIECE TAPERED	135cm	54"	28	1 1/8	1	0.6	1 ¼	50	28.0	61 ¾
------	----------------------	-------	-----	----	-------	---	-----	-----	----	------	------



## Metal Adapter

Threaded metal tip. Attaches to end of any 23mm (15/16") diameter extension pole or broom handle for use with standard roller frames.

A-080	KLAMP-TITE ADAPTER			23	15/16	1	0.1	¼
-------	-----------------------	--	--	----	-------	---	-----	---





ITEM NO.	SURFACE DESIGNATION	SIZE		PILE DEPTH		DIAMETER		SHELF PACK	WEIGHT/PACK	
		mm	in	mm	in	mm	in		Kg	lb
4704	<b>GENERAL PURPOSE</b> THREE PACK POLYESTER FABRIC (Solvent resistant polypropylene core)	240	9 1/2	10	3/8	38	1 1/2	24	4.2	9 1/4



4702	<b>"LINT FREE"</b> THREE PACK POLYESTER WOVEN FABRIC (Solvent resistant polypropylene core)	240	9 1/2	10	3/8	38	1 1/2	24	3.8	8 3/8
------	--	-----	-------	----	-----	----	-------	----	-----	-------



4553	<b>ECONO</b> FOUR PACK POLYESTER FABRIC (Solvent resistant polypropylene core)	240	9 1/2	10	3/8	38	1 1/2	18	3.2	7 1/8
------	---	-----	-------	----	-----	----	-------	----	-----	-------

4562	<b>ECONO</b> SIX PACK POLYESTER FABRIC (Solvent resistant polypropylene core)	240	9 1/2	10	3/8	38	1 1/2	12	2.1	4 5/8
------	--	-----	-------	----	-----	----	-------	----	-----	-------



C-256	<b>CAGE FRAME &amp; 2 ROLLER REFILLS</b> ECONO POLYESTER FABRIC (Solvent resistant polypropylene core)	240	9 1/2	10	3/8	38	1 1/2	20	6.8	15
-------	--	-----	-------	----	-----	----	-------	----	-----	----



C-260	<b>ROLLER COATER</b> THREE PIECE TELESCOPIC EXTENSION POLE, CAGE FRAME & ROLLER REFILL	240	9 1/2	10	3/8	38	1 1/2	12	8.4	18 5/8
-------	---	-----	-------	----	-----	----	-------	----	-----	--------



# Promotional Roller Sets



www.simms.ca

ITEM NO.	SURFACE DESIGNATION	SIZE mm	in	PILE DEPTH mm	in	DIAMETER mm	in	SHELF PACK	WEIGHT/PACK Kg	lb
4779	<b>PRO MAX</b> <b>PROFESSIONAL QUALITY</b> SIX PIECE (Tray, Liner, Frame, 2 Refills & Brush)	240	9 ½	10	¾	38	1 ½	10	8.4	18 ½
4774	<b>PRO SELECT</b> <b>PROFESSIONAL QUALITY</b> FIVE PIECE (Tray, Frame, 2 Refills & Brush)	240	9 ½	10	¾	38	1 ½	10	7	15 ½
S-369	<b>DECOR-MATE BETTER QUALITY</b> THREE PIECE (Tray, Frame & Refill)	240	9 ½	10	¾	38	1 ½	16	8.2	18
S-370	<b>DECOR-MATE "LINT FREE"</b> THREE PIECE (Tray, Frame & Refill)	240	9 ½	10	¾	38	1 ½	10	7.3	16
S-570	<b>STAIN</b> FOUR PIECE (Tray, Frame, Refill & Brush)	240	9 ½	13	½	38	1 ½	10	7.7	17
S-721	<b>BLUEJAY</b> FOUR PIECE (Tray, Liner, Frame & Refill)	240	9 ½	10	¾	38	1 ½	10	6.8	15
4479	<b>MULTI-PIECE</b> FIVE PIECE (Tray, Frame, 2 Refills & Brush)	240	9 ½	10	¾	38	1 ½	10	7.7	17
4769	<b>MULTI-PIECE</b> THIRTEEN PIECE PAINT SET	240	9 ½	10	¾	38	1 ½	10	9.1	20



# Time Trimmer® Mini-Rollers

Painting hard to reach places and those specialty projects can be done quickly and easily with the complete line of Time Trimmer® mini-rollers. From kitchen cupboards, to stair spindles, there's a specialty Time Trimmer® mini-roller for every type of job. So when your customers want the job done right, reach for the roller that saves them time and earns you money. Reach for Time Trimmer® mini-roller from Simms.

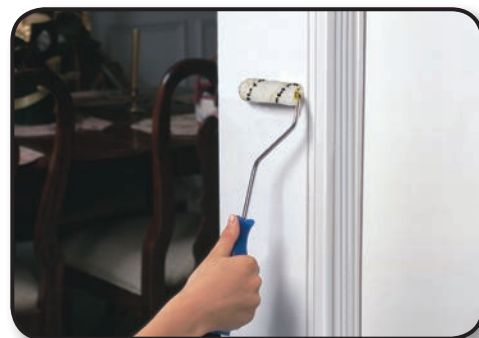
**... Because Time is Money!**

## Super Fine Foam



Ideal for high gloss paints, stains, varnishes, urethanes and melamine. Rounded ends (no lap marks)

## Micro Fibre Fabric



Works well with all paints, provides superior finish. Paints both sides of corner at the same time.

## Gold Stripe Fabric



Works well with flat and semi-gloss paints, exterior stains. Paints both sides of corner at same time.

## Lint Free Fabric

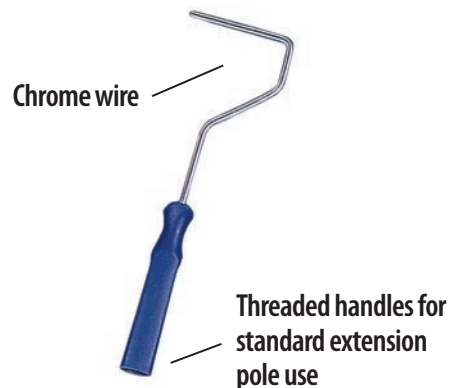


Use with flat, low sheen and semi-gloss paints. Ideal for cupboards, cabinets, shelving and doors.

Frames hold both 100mm (4") and 150mm (6") refills



## Single-wire European format roller



# Time Trimmer® Mini-Rollers



www.simms.ca

ITEM NO.	DESCRIPTION	REFILL SIZE		PILE DEPTH		FRAME LENGTH		TRAY SIZE		SHELF PACK	WEIGHT/PACK	
		mm	in	mm	in	cm	in	cm	in		Kg	lb

## Super Fine Foam

Extra high density foam. Produces super smooth finishes. No lap marks. Use when painting doors, cupboards, cabinets, furniture, toys, stairs, behind appliances and other hard to reach places. Ideal for applying melamine, urethanes, semi-gloss and high gloss paints, stains and varnishes to smooth surfaces.

A-100	<b>ROLLER (FRAME &amp; REFILL)</b> Rounded Ends Threaded Handle	100	4	11	7/16	30.5	12			20	2.8	6 1/4
-------	---	-----	---	----	------	------	----	--	--	----	-----	-------

A-101	<b>MINI-ROLLER</b> Rounded Ends (12" Long Handle & 2 Refills)	100	4	11	7/16	30.5	12			20	2.9	6 1/2
-------	--	-----	---	----	------	------	----	--	--	----	-----	-------

A-104	<b>ROLLER REFILL</b> Rounded Ends	100	4	11	7/16					20	0.5	1
-------	--------------------------------------	-----	---	----	------	--	--	--	--	----	-----	---

A-136	<b>ROLLER REFILL 2 PACK</b> Rounded Ends	100	4	11	7/16					10	0.5	1
-------	---	-----	---	----	------	--	--	--	--	----	-----	---

A-134	<b>ROLLER REFILL 10 PACK</b> Rounded Ends	100	4	11	7/16					10	2.3	5
-------	--	-----	---	----	------	--	--	--	--	----	-----	---

A-106	<b>ROLLER REFILL</b> Rounded Ends	150	6	11	7/16					20	0.7	1 1/2
-------	--------------------------------------	-----	---	----	------	--	--	--	--	----	-----	-------

S-100	<b>ROLLER SET 3 PIECE</b> (TRAY, FRAME & REFILL) Rounded Ends Threaded Handle	100	4	11	7/16	30.5	12	36x18	14x7	10	2.2	4 7/8
-------	--	-----	---	----	------	------	----	-------	------	----	-----	-------

S-102	<b>ROLLER SET 3 PIECE</b> (TRAY, FRAME & REFILL) Rounded Ends Threaded Handle	150	6	11	7/16	30.5	12	36x20.5	14x8	10	2.7	6
-------	--	-----	---	----	------	------	----	---------	------	----	-----	---





ITEM NO.	DESCRIPTION	REFILL SIZE		PILE DEPTH		FRAME LENGTH		TRAY SIZE		SHELF PACK	WEIGHT/PACK	
		mm	in	mm	in	cm	in	cm	in		Kg	lb

## Super Fine Foam

S-115	"MINI" ROLLER SET 3 PIECE (TRAY, FRAME & REFILL) Square Ends	70	2 ¾	11	7/16	15	6	20.3x12	8 x 4 ¾	20	1.3	2 7/8
-------	--	----	-----	----	------	----	---	---------	---------	----	-----	-------

A-131	MINI-ROLLER REFILL (Replacement Refills for S115 Set) 2 Pack / Square Ends	70	2 ¾	11	7/16					20	0.4	0.9
-------	---	----	-----	----	------	--	--	--	--	----	-----	-----

S-117	ROLLER SET 4PC (TRAY, FRAME & 2 REFILLS) Rounded Ends Threaded Handle	100	4	11	7/16	25	10	27.5 x 12.5	11x5	30	4.4	11
-------	--	-----	---	----	------	----	----	-------------	------	----	-----	----

## Gold Stripe Fabric

*Woven fabric. Small diameter roller gets into tight spots. Fabric over end of refill will paint both sides of corner at same time. Use with flat and semi-gloss paints and exterior stains on smooth to semi-rough surfaces. Ideal for painting interior: walls, ceilings, corners, cupboards, cabinets, closets, shelves and other hard to reach places. Excellent for painting exterior: siding, cement, fences, decks, eaves and soffits.*

A-110	ROLLER (FRAME & REFILL)	100	4	12	15/32	41	16			20	3.6	8
-------	-------------------------	-----	---	----	-------	----	----	--	--	----	-----	---

A-112	ROLLER (FRAME & REFILL)	150	6	12	15/32	61	24			10	2.5	5 ½
-------	-------------------------	-----	---	----	-------	----	----	--	--	----	-----	-----

A-114	ROLLER REFILL	100	4	12	15/32					20	0.7	1 ½
-------	---------------	-----	---	----	-------	--	--	--	--	----	-----	-----

A-146	ROLLER REFILL 2 PACK	100	4	12	15/32					10	0.5	1
-------	----------------------	-----	---	----	-------	--	--	--	--	----	-----	---

A-144	ROLLER REFILL 10 PACK	100	4	12	15/32					10	3.4	7 ½
-------	-----------------------	-----	---	----	-------	--	--	--	--	----	-----	-----

A-116	ROLLER REFILL	150	6	12	15/32					20	0.8	1 ¾
-------	---------------	-----	---	----	-------	--	--	--	--	----	-----	-----

# Time Trimmer® Mini-Rollers



www.simms.ca

ITEM NO.	DESCRIPTION	REFILL SIZE		PILE DEPTH		FRAME LENGTH		TRAY SIZE		SHELF PACK	WEIGHT/PACK	
		mm	in	mm	in	cm	in	cm	in		Kg	lb

## Gold Stripe Fabric

S-110	ROLLER SET 3 PIECE (TRAY, FRAME & REFILL) Threaded Handle	100	4	12	15/32	30.5	12	36x18	14x7	10	2.2	4 7/8
-------	---	-----	---	----	-------	------	----	-------	------	----	-----	-------



## Lint Free Fabric

Lint free woven fabric. Small diameter roller gets into tight spots. Use with flat, low sheen and semi-gloss paints. Ideal for painting walls, ceilings, room corners, cupboards, cabinets, closet doors, shelves, and other hard to reach areas. For smooth to semi-smooth surfaces.

A-151	ROLLER REFILL 2 PACK	100	4	10	3/8					10	0.7	1 1/2
A-154	ROLLER REFILL 2 PACK	150	6	10	3/8					10	0.8	1 3/4
A-153	ROLLER REFILL 10 PACK	100	4	10	3/8					10	3.4	7 1/2



## Microfiber Fabric

Microfiber fabric. Small diameter roller gets into tight spots. Provides extremely fine, consistent finishes when rolling in either direction with low splatter and low lint application. Paint pick up and release is excellent along with being very durable. Fabric over end of the refill will paint both sides of corner at the same time.

A-157	EXTENDABLE ROLLER (Frame & Refill 2pk) Frame Extends up to 90mm/36"	100	4	10	3/8	90	36			10	3.3	6 1/4
A-158	ROLLER REFILL 2 PACK	100	4	10	3/8					10	0.5	1
S-112	ROLLER SET 3 PIECE (Tray, Frame, & Refill)	100	4	10	3/8	30.5	12	36	18	10	2.2	4 7/8
A-160	ROLLER REFILL 10 PACK	100	4	10	3/8					10	3.4	7 1/2





**SIMMS**

www.simms.ca

# Time Trimmer® Mini-Rollers

ITEM NO.	DESCRIPTION	REFILL SIZE		PILE DEPTH		FRAME LENGTH		TRAY SIZE		SHELF PACK	WEIGHT/PACK	
		mm	in	mm	in	cm	in	cm	in		Kg	lb

## Velour Fabric

Short pile woven fabric. For fine finishes on smooth surfaces. Great for kitchen and bathroom painting including doors, cupboards, cabinets and other small areas. Also, works well on ironwork and metal surfaces. Ideal for applying semi-gloss and high gloss paints, urethanes, varnishes, stains, epoxy paints and lacquers.

A-118	ROLLER REFILL	100	4	4	$\frac{5}{32}$					20	0.7	1½
-------	---------------	-----	---	---	----------------	--	--	--	--	----	-----	----

## Roller Frames

Single wire European style format. Chromed wire. Simms comfort design handles threaded for standard extension pole use. Useable with 100mm (4") or 150mm (6") refills.

F-102	ROLLER FRAME Threaded Handle					30.5	12			20	2.8	6¼
F-104	ROLLER FRAME Threaded Handle					41	16			20	3.7	8

## Roller Trays

Vacuumed-formed PET. Deep-well design to hold more paint and prevent spills. Anti-skid grid for even paint loading. Contains a high percentage of recycled plastic

T-040	ROLLER TRAY For use with 100mm (4") or less refills							36 x 18	14 x 7	20	2.0	4¾
T-060	ROLLER TRAY For use with 150mm (6") or less refills							36 x 20.5	14 x 8	20	2.5	5½



# Trim Coaters

ITEM NO.	DESCRIPTION	REFILL SIZE		PILE DEPTH		DIAMETER		SHELF PACK	WEIGHT/PACK	
		mm	in	mm	in	mm	in		Kg	lb

**General Purpose Woven Fabric.** Fine Finishes. Mini-diameter core and short metal wire frame and handle for small area painting. Ideal for semi-gloss and high gloss paints, enamels, varnishes, melamine, marine finishes, adhesives and fiberglass applications. Removable end caps included with roller. For smooth surfaces.

A-040	<b>ROLLER</b> Handle & Refill	75	3	6	¼	22	7/8	20	0.9	2
-------	----------------------------------	----	---	---	---	----	-----	----	-----	---

A-041	<b>ROLLER REFILL</b> Two Pack	75	3	6	¼	22	7/8	20	0.5	1
-------	----------------------------------	----	---	---	---	----	-----	----	-----	---



**General Purpose Polyester Fabric.** Unique Simms comfort design, short style plastic handle for painting into tight spots. Ideal for all flat paints on smooth and semi-smooth surfaces. Plastic end caps included with roller. Roller refill can also be used with standard 75mm (3") cage frame (Simms A-053).

A-044	<b>ROLLER</b> Handle & Refill	75	3	10	¾	38	1½	20	1.1	2 ¾
-------	----------------------------------	----	---	----	---	----	----	----	-----	-----

A-045	<b>ROLLER REFILL</b> Single Pack	75	3	10	¾	38	1½	20	0.6	1 ⅓
-------	-------------------------------------	----	---	----	---	----	----	----	-----	-----



**Specialty Nylon Fabric.** Unique Simms comfort design, short style plastic handle for painting into tight spots. Ideal for applying epoxy, fiberglass resins, texture coatings, moisture cure urethane varnishes and adhesives. For smooth surfaces. Plastic end caps included with roller. Roller refill can also be used with standard 75mm (3") cage frame (Simms A-053).

A-048	<b>ROLLER</b> Handle & Refill	75	3	3	1/8	38	1½	20	1.0	2 ¼
-------	----------------------------------	----	---	---	-----	----	----	----	-----	-----

A-049	<b>ROLLER REFILL</b> Single Pack	75	3	3	1/8	38	1½	20	0.6	1 ⅓
-------	-------------------------------------	----	---	---	-----	----	----	----	-----	-----



**General Purpose Foam.** Unique Simms comfort design, short style plastic handle for painting into tight spots. Ideal for applying urethanes, melamine, semi-gloss and high gloss paints, stains and varnishes. Not recommended for lacquer or shellac. For smooth surfaces. Plastic end caps included with roller. Roller refill can also be used with standard 75mm (3") cage frame (Simms A-053).

A-050	<b>ROLLER</b> Handle & Refill	75	3	3	1/8	38	1½	20	0.9	2
-------	----------------------------------	----	---	---	-----	----	----	----	-----	---

A-051	<b>ROLLER REFILL</b> Single Pack	75	3	3	1/8	38	1½	20	0.5	1
-------	-------------------------------------	----	---	---	-----	----	----	----	-----	---



ITEM NO.	DESCRIPTION	REFILL SIZE		PILE DEPTH		DIAMETER		SHELF PACK	WEIGHT/PACK	
		mm	in	mm	in	mm	in		Kg	lb

**Premier Quality "Lint Free".** Best quality, shed-resistant fabric for fine finishes. For use with all paints on smooth to semi-smooth surfaces. 6mm ideal for semi-gloss and high gloss paints. 10mm pile ideal for flat, low sheen and semi-gloss paints. Both short style plastic handle and deluxe wire frame with threaded extension handle versions available. Plastic end caps included with A-054. 75mm (3") roller refills can also be used with standard cage frame (Simms A-053) and 100mm (4") refills with (Simms A-094).

A-052	<b>DELUXE ROLLER</b> Handle & Refill 25 cm (10") long handle threaded for extension pole use.	75	3	6	¼	38	1½	20	2.7	6
-------	--	----	---	---	---	----	----	----	-----	---

A-054	<b>ROLLER</b> Handle & Refill	75	3	6	¼	38	1½	20	1.0	2¼
-------	----------------------------------	----	---	---	---	----	----	----	-----	----

A-055	<b>ROLLER REFILL</b> Single Pack	75	3	6	¼	38	1½	20	0.6	1⅓
-------	-------------------------------------	----	---	---	---	----	----	----	-----	----

A-057	<b>ROLLER REFILL</b> Single Pack	75	3	10	¾	38	1½	20	0.6	1⅓
-------	-------------------------------------	----	---	----	---	----	----	----	-----	----

A-090	<b>DELUXE ROLLER</b> Handle & Refill 25 cm (10") long handle threaded for extension pole use.	100	4	6	¼	38	1½	20	2.9	6 ⅔
-------	--	-----	---	---	---	----	----	----	-----	-----

A-091	<b>ROLLER REFILL</b> Single Pack	100	4	6	¼	38	1½	20	0.8	1¾
-------	-------------------------------------	-----	---	---	---	----	----	----	-----	----

A-093	<b>ROLLER REFILL</b> Single Pack	100	4	10	¾	38	1½	20	0.8	1¾
-------	-------------------------------------	-----	---	----	---	----	----	----	-----	----

ITEM NO.	DESCRIPTION	REFILL SIZE		PILE DEPTH		DIAMETER		SHELF PACK	WEIGHT/PACK	
		mm	in	mm	in	mm	in		Kg	lb

## Elite Trim Coaters

*"Elite Professional Plus" high density, shed-resistant woven fabric provides a fine lint free finish. Paint pick-up and release is superior to regular woven rollers making painting easier. 10mm pile ideal for flat, low sheen and semi-gloss paints. Ideal for today's low VOC paints.*

A-065	<b>ROLLER WITH HANDLE &amp; REFILL</b> 25cm (10") long handle threaded for extension pole use	75	3	10	3/8	38	1 1/2	20	3.2	7
-------	---	----	---	----	-----	----	-------	----	-----	---

A-066	<b>ROLLER REFILL</b> Single Pack	75	3	10	3/8	38	1 1/2	20	0.6	1 1/3
-------	-------------------------------------	----	---	----	-----	----	-------	----	-----	-------

A-096	<b>ROLLER WITH HANDLE &amp; REFILL</b> 25cm (10") long handle threaded for extension pole use	100	4	10	3/8	38	1 1/2	20	3.6	8
-------	---	-----	---	----	-----	----	-------	----	-----	---

A-097	<b>ROLLER REFILL</b> Single Pack	100	4	10	3/8	38	1 1/2	20	0.8	1 3/4
-------	-------------------------------------	-----	---	----	-----	----	-------	----	-----	-------



## Trim Roller Tray

*Easy to hold trim roller tray. Unique Simms deep well design with anti-skid grid for even paint distribution. 21.6 cm x 14 cm (8 1/2" x 5 1/2") size with 0.3L (0.3 qt.) paint capacity. Vacuumed-formed solvent resistant PET plastic. Contains a high percentage of recycled plastic*

T-050	<b>ROLLER TRAY</b>	75	3					100	2.8	6 1/4
-------	--------------------	----	---	--	--	--	--	-----	-----	-------





ITEM NO.	DESCRIPTION	REFILL SIZE		PILE DEPTH		DIAMETER		SHELF PACK	WEIGHT/PACK	
		mm	in	mm	in	mm	in		Kg	lb

## Trim Roller Sets

**General Purpose Polyester Fabric.** Includes A-044 roller. Ideal for applying all flat paints. Not recommended for semi-gloss and high gloss coatings. For smooth and semi-smooth surfaces.

S-342	<b>ROLLER SET 3 PIECE</b> (Tray, Frame & Refill)	75	3	10	3/8	38	1 1/2	20	1.8	4
-------	---	----	---	----	-----	----	-------	----	-----	---

**Premier Quality "Lint Free".** Includes A-054 roller. Best quality, shed-resistant fabric for fine finishes. Ideal for all semi-gloss and high gloss paints on smooth surfaces.

S-344	<b>ROLLER SET 3 PIECE</b> (Tray, Frame & Refill)	75	3	6	1/4	38	1 1/2	20	1.8	4
-------	---	----	---	---	-----	----	-------	----	-----	---

**General Purpose Woven Fabric.** Includes A-040 mini diameter roller for tight spot painting. Ideal for semi-gloss and high gloss paints, enamels, varnishes, melamine, marine finishes, adhesives and fiberglass applications. Extra refill. Vacuum-formed solvent resistant PET plastic T-050 tray.

S-346	<b>ROLLER SET 4 PIECE</b> (Tray, Frame & Refill)	75	3	6	1/4	22	7/8	20	1.8	4
-------	---	----	---	---	-----	----	-----	----	-----	---

**"Premier Quality Lint Free".** Best quality shed-resistant fabric for fine finishes. Ideal for all semi-gloss and high gloss paints on smooth surfaces.

S-354	<b>TRIM ROLLER SET</b> 4 PIECE (Tray, Cage Frame & 2 Refills)	100	4	6	1/4	38	1 1/2	10	2.7	6
-------	---	-----	---	---	-----	----	-------	----	-----	---

# Painting Accessories



www.simms.ca

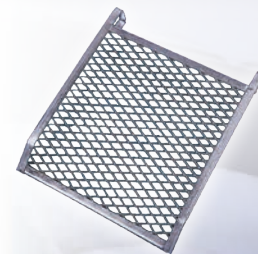
ITEM NO. DESCRIPTION

SHELF PACK WEIGHT/PACK  
Kg lb

## Bucket Grid

Expanded metal grid in steel frame. Bent legs. For loading paint on a roller direct from a 20L (5 gal.) pail.

A-020 BUCKET GRID 24 6.8 15



## Paint Can Liner

Vacuumed-formed solvent resistant PET plastic. Paint can liner is designed to be used with standard 4L (1 gal) paint cans but is sturdy enough to be used on its own for painting trim work or other small painting projects. Will save painters clean-up time and saves them having to purchase and store empty paint cans. Wide lip covers the full rim of the paint can and is angled so paint will drip towards the inside of the paint can when brushing off excess paint and not down the outside of the can.

A-028 PAINT CAN LINER 20 0.73 1.6



## Painter's Mitt

General Purpose. Thumb style mitt. Use with all paints. Synthetic lambswool fabric with protective polyethylene lining. Handy for painting poles, pipes, radiators, railings, wire fencing, screens and other unusual surfaces. Use in decorative faux finishing applications. Also, ideal for washing or polishing a car.

A-030 PAINTER'S MITT 20 1.7 3 ¾



## Corner Roller

General Purpose. Rounded, seamless foam roller for painting into corners and other tight spots. Plastic handle. Ideal for applying urethanes, melamine, semi-gloss and high gloss paints, stains and varnishes.

RT320C CORNER ROLLER 12 0.5 1



## Trim Edger Tool

For fast and easy trimming of doors, windows, ceilings and baseboards. High impact ABS plastic paint edger tool with patented angled, adjustable guide wheels. New and improved handle design which is larger and easier to hold, providing better control of the tool. Replaceable, shed-resistant nylon fabric pad. Pad size 121 mm x 89 mm (4 ¾" x 3 ½"). Use with all paints, stains, varnishes and enamels.

A-180 TRIM EDGER TOOL 20 1.6 3 ½

A-182 TRIM EDGER PAD REFILL Two Pack 20 1.0 2 ¼



ITEM NO.	DESCRIPTION	SIZE		SHELF PACK	WEIGHT/PACK	
		LENGTH	WIDTH		Kg	lb

## Blue Dolphin Pro-Line Painter's Tape

Blue Dolphin Pro-Line Painter's Tape. Sharp, clean lines. Will not harm painted surfaces or drywall. Will not harm delicate surfaces and will not leave a sticky residue. 14 days clean & easy removal.

BDT25	BLUE DOLPHIN PRO-LINE PAINTER'S TAPE	55m (180ft)	25mm (1")	36	5.2	11 ½
BDT38	BLUE DOLPHIN PRO-LINE PAINTER'S TAPE	55m (180ft)	38mm (1 ½")	24	5.2	11 ½
BDT48	BLUE DOLPHIN PRO-LINE PAINTER'S TAPE	55m (180ft)	48mm (2")	24	6.6	14 ½

## Dust Masks

Dust masks with metal nose clip. For protection against construction dust such as drywall, wood, fiberglass and silica. Also, great for uses around the home such as mowing, sweeping, dusting, gardening and protection against pollen.

SDM005P	5 PACK MASKS	12	0.23	½
SDM050X	BULK PACK	50	0.2	0.4

## Sanding Sponge

Sanding sponges. Long lasting, reusable and can be used wet or dry. Use on paint, wood, metal, plastic & drywall. Two grits on one sponge. Ideal for corners, furniture, baseboards & mouldings.

MF10	MEDIUM/FINE GRIT SQUARE	24	0.36	0.8
MC11	MEDIUM/COARSE GRIT SQUARE	24	0.36	0.8
MFA10	MEDIUM/FINE GRIT DUAL ANGLE	24	0.58	1.3
MCA11	MEDIUM/COARSE GRIT DUAL ANGLE	24	0.58	1.3
MF20	MEDIUM/FINE GRIT SQUARE BULK (NO PACKAGING)	32	0.55	1.2
MC21	MEDIUM/COARSE GRIT SQUARE BULK (NO PACKAGING)	32	0.55	1.2

## MAGNE-CLIP

MAGNE-CLIP. Strong permanent magnet holds any size paint brush, 30mm(1-14") to 100mm(4"). Safely and securely clips onto any size paint can or tray, metal or plastic. Centers brush over paint can or tray preventing paint drips and spills.

5095	MAGNE-CLIP	24	3.7	8.2
------	------------	----	-----	-----

## Brush & Roller Cleaner

Paint brush & roller cleaner. Spin cleans and dries any size brush and roller quickly and thoroughly.

6006	SPINNER	6	3.9	8 ½
------	---------	---	-----	-----



ITEM NO.	DESCRIPTION	SHELF PACK	WEIGHT/PACK Kg	lb
----------	-------------	------------	-------------------	----

## Paint Brush Extender

*Paint Brush Extender. Safely and securely holds any size brush. Easily adjusts to any angle. Fits all threaded extension poles. Allows for easier painting with difficult angles and hard to reach places.*

6007	PAINT BRUSH EXTENDER	12	4	8.8
------	----------------------	----	---	-----



## Caulking Guns

*Traditional 1/10 smooth cradle caulking gun. Available in blue*

6000	CAULKING GUN 1/10 SMOOTH	24	6.9	15
------	-----------------------------	----	-----	----

*Traditional 1Quart smooth type, cradle caulking gun w/strap. Features a clean out tool and spout cutter.*

6002	CAULKING GUN 1 QUART SMOOTH	6	4.4	9.7
------	--------------------------------	---	-----	-----

*Unique 1/10 smooth, hex rod spring type skeleton caulking gun. Available in blue.*

6003	CAULKING GUN 1/10 SMOOTH - HEX ROD	24	8.6	19
------	---------------------------------------	----	-----	----

*For the "DIY"er. A "Never Drip" skeletal gun that features a spout cutter and ladder hook. Gray finish.*

6005	CAULKING GUN 1/10 SMOOTH - HEX ROD	12	6.8	15
------	---------------------------------------	----	-----	----

*For the "DIY"er. Cradle gun that features a clean out tool, spout cutter and ladder hook. Gray finish.*

6009	CAULKING GUN 1/10 RATCHET	12	4.4	9.8
------	------------------------------	----	-----	-----

*Professional "Never Drip" gun features a clean out tool, spout cleaner, ladder hook and wrist strap. Chrome finish.*

6009C	CAULKING GUN 1/10 RATCHET	12	6.8	15
-------	------------------------------	----	-----	----

*Heavy-duty construction ideal for contractors. Features alloy steel with a punch lever to stop caulk flow.*

6004P	CAULKING GUN 1/10 SMOOTH - ROTATING BARREL	12	7.5	16 ½
-------	---	----	-----	------

*Heavy-duty construction ideal for contractors. Features a rotating barrel, punch lever, spout cleaner, and ladder hook.*

6004	CAULKING GUN 1 QUART SMOOTH	6	5.4	12
------	--------------------------------	---	-----	----



ITEM NO.	DESCRIPTION	SIZE	SHELF PACK	WEIGHT/PACK	
				Kg	lb

## Plastic Drop Sheets

KL 300	UTILITY GRADE	9' x 12'	24	1.6	3 ½
KL 300 x 3	UTILITY GRADE	9' x 12'	3pk	1.6	3 ½
KL 31025	UTILITY GRADE	10' x 25'	16	2.2	4.8
KL 10400	UTILITY GRADE	9' x 400'	1	2.5	5 ½
KL 400	STANDARD GRADE	9' x 12'	18	1.4	3
KL 41025	STANDARD GRADE	10' x 25'	20	3.1	6.8
KL 800	HEAVY DUTY GRADE	9' x 12'	9	1.5	3.4
KL 81025	HEAVY DUTY GRADE	10' x 25'	18	7.7	17
KLE10	PRO 1 MIL	9' x 12'	24	4.5	10
KLE20	PRO 2 MIL	9' x 12'	16	6.6	14 ½
KLE30	PRO 3 MIL	9' x 12'	12	7.3	16
KLE101025	GENERAL PURPOSE	10' x 25'	16	16.8	37
KLE301025	INDUSTRIAL PURPOSE	10' x 25'	12	16.4	36

## Features of a Quality floor finish applicator

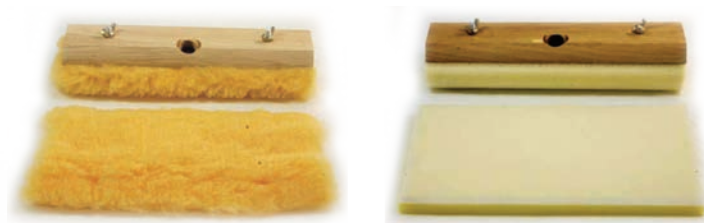


25cm (10") wide padded wood block applicators for applying stains, urethane and other finishes to floors

Wood block is threaded for use with standard broom handles

Pads are replaceable (screw and wig-nut attachment)

Synthetic lambswool type of fabric pad for applying oil-based stains and finishes



Woven fabric pad laminated to foam backing (resists shedding) for applying waterbased stains and finishes



		Size		Shelf	Weight/Pack	
		mm	in	Pack	Kg	lb
6252	OIL-BASED APPLICATOR	250	10	6	1.6	3 ½
6253	OIL-BASED REPLACEMENT PAD	250	10	10	0.5	1
6262	WATER-BASED APPLICATOR	250	10	6	1.6	3 ½
6263	WATER-BASED REPLACEMENT PAD	250	10	10	0.5	1





***QUALITY and INNOVATION***  
***SINCE 1866***

### **Head Office**

---

**Tel:** 506.635.6330

**Fax:** 506.635.6309

**Mailing address:**

**T.S. Simms & Co.**

P.O. Box 820,  
Saint John, NB E2L 4C5

**Courier address:**

**T.S. Simms & Co.**

560 Main Street, Suite 320  
Saint John, NB E2K 1J5

### **Customer Service & Order Desk** **(For Canada & U.S.A.)**

---

**Email:** [orderdesk@simms.ca](mailto:orderdesk@simms.ca)

**Tel:** 506.635.6305

**Fax:** 506.635.6323

**Toll Free:**

1.800.561.9100

**Toll Free Fax:**

1.888.756.0533



**Mixed Sources**

Product group from well-managed  
forests and other controlled sources  
[www.fsc.org](http://www.fsc.org) Cert no. SW-COC-002628  
© 1996 Forest Stewardship Council

[www.simms.ca](http://www.simms.ca)  
[info@simms.ca](mailto:info@simms.ca)

