


Scepter[®]
 **MARINE**

2017



OEM QUALITY

**Portable Fuel Tanks, Permanent Fuel Tanks,
Fuel Connectors, Fuel Lines & Fuel Accessories**

Portable Fuel Tanks	3, 4
Topside Fuel Tanks	4
Fuel Line Assemblies	5
Primer Bulbs & Bulk Fuel Hose	6
Fuel Line Connectors & Fittings	7, 8
Portable Fuel Tank Replacement Parts	9
DuraMax Flo n' Go™ Tanks	10
Jerry Cans & Replacement Spouts	11, 12
Permanent Fuel Tanks	13, 14
Fuel Senders & Replacement Gaskets	15
Tank Installation Accessories	16
Fuel Pick-ups	16
In-line Fuel Filters	17
Fuel Valves & Vents	17
Barbs, Elbows & Anti-Siphon Valves	18
Drain Plugs	19
Funnels	19
Motor Flushers	20
Fuel Transfer Pump	20
Water & Waste Tanks, Adapter Kits	21

Since 1949, Scepter has provided unparalleled products and services to the market and has earned a reputation of being an industry leader in innovation and quality in the categories it services. Now integrated under the Myers Industries Inc. corporate umbrella, Scepter introduces the "Scepter Marine" aftermarket brand that includes an extensive range of topside and below deck marine fuel tanks manufactured by Scepter, along with water and holding tanks exclusively manufactured for Scepter by our sister company Ameri-Kart. Ameri-Kart is the leading supplier of rotationally molded products and services to the RV industry in North America.

With core competencies in mono-layer and multi-layer (barrier) blow molding, injection molding and now rotation molding through Ameri-Kart, Scepter is prime in manufacturing processes, allowing faster response times and in-house, in-line inspections and testing that can't be matched.

Scepter Canada Inc. is an ISO 9001 registered manufacturer. Product certifications and approvals include: International Marine Certification Institute (IMCI), CE, CSA, ASTM, SAI Global, DOT, UN, EPA and CARB among others.

Scepter continues to manufacture and distribute its comprehensive line of high-quality marine products, including EPA/CARB approved fuel tanks, fuel lines, fuel accessories, Jerry cans and DuraMax fuel management systems. The Scepter Marine brand will include portable, topside and below deck marine fuel tanks and a wide range of OEM-quality components for the 2017 marine season.



The "ECO Checked" symbol guarantees that our products meet or exceed state/federal regulations governing vapor emissions. The symbol guarantees that products are environmentally responsible, and that they help to reduce emissions, improve air quality and reduce exposure to toxic chemicals. The ECO checked symbol can be found on many of Scepter's products, including jerry cans, primer bulbs, and fuel lines.



Quality. Performance. Reliability.

When it comes to providing original equipment quality, performance and reliability, no other company can match Scepter. Look for the OE Choice logo to appear on products that reflect the same level of quality that OEM's have come to expect. Today, international manufacturers like BRP, Honda, Mercury, Suzuki, Tohatsu and Yamaha all use marine products manufactured by Scepter.

Scepter Marine is a registered trademark of Scepter Canada Inc.

INNOVATIVE PRODUCTS FOR 2017



Topside Tanks

Totally new designs manufactured for Scepter by sister company Ameri-Kart, Scepter is now a prime manufacturer in this category of products. All tanks are molded from UV stabilized, cross-linked polyethylene for excellent durability and long product life.

- 16 (Red), 20 (Red) and 24 (White) gallon capacities / 60L, 75L and 90L
- Fit today's popular center console boats
- Superior fit and finish
- Ideal for use with corrosive ethanol fuels



Scepters Commitment to Quality

- Scepter's injection molded fuel fittings are now branded
- Equipped with date codes
- Female fittings feature Viton™ gaskets (indicated by red disk) which are more resistant to ethanol blended fuels



Portable Fuel Tanks

New tooling and better quality finish result in a superior quality product. Molded for UV stabilized, cross-linked polyethylene, and will not delaminate, rust or corrode.

- Angled back corners accommodate fuel line routings
- Molded in bottom pads keep the tank body off the floor and allow for complete air circulation
- Multi-directional pick-up assembly allows for easy installation
- Angled fill for refueling convenience
- Cap with mechanical sight gauge for easy fuel level detection
- Molded in inserts allow for secure mounting options



Permanent Tanks

Under the Myer's Industries umbrella, Scepter is able to offer a brand new range of permanent tanks manufactured by our sister company Ameri-Kart. All tanks were designed with the customer in mind, and some of the upgraded features include:

- 33-240 Ohm reed-style sender
- Diesel return fitting (Can be used as additional fuel pick-up)
- Fittings and fill are right angled and parallel to the top of the tank for lower profile installation, allowing the customer to add additional capacity
- Meets or exceeds ABYC, NMMA and USCG requirements
- CE certified



Neptune Portable Fuel Tanks

08590	3 Gallon / 11.4 L	16.7"L x 10.5"W x 8.1"H
08592	6 Gallon / 22.7 L	20.7"L x 13.0"W x 10.9"H

For Sale in the USA

OEM Choice! Portable Fuel Tanks

08576	3.2 Gallon / 12 L	14.3"L x 10.4"W x 9.1"H
08580	6.6 Gallon / 25 L	21.5"L x 14.3"W x 9.3"H

International Use

04158	3 Gallon / 11.4 L	16.7"L x 10.5"W x 8.1"H
04921	6 Gallon / 22.7 L	20.7"L x 13.0"W x 10.9"H
06154	6 Gallon / 22.7 L	20.7"L x 13.0"W x 10.9"H <i>Comes with combi cap gauge</i>

03780	3.2 Gallon / 12 L	14.3"L x 10.4"W x 9.1"H
03781	6.6 Gallon / 25 L	21.5"L x 14.3"W x 9.3"H

ALSO AVAILABLE WITHOUT A GAUGE

03773	3.2 Gallon / 12 L	14.3"L x 10.4"W x 9.1"H
03776	6.6 Gallon / 25 L	21.5"L x 14.3"W x 9.3"H

TOPSIDE FUEL TANKS

All tanks are molded from UV stabilized, cross-linked polyethylene for excellent durability and long product life. New tooling and better quality finish result in superior products that customers demand – regardless of style.

- Angled back corners accommodate fuel line routings
- Molded in bottom pads keep the tank body off the floor and allow for complete air circulation
- Multi-directional pick-up assembly allows for easy installation
- Angled fill for refueling convenience
- Cap with mechanical fuel gauge for easy fuel level detection
- Molded in inserts allow for secure mounting options

eco logo	10557	16 Gallon / 61 L	30"L x 18"W x 8.5"H*
	10559	20 Gallon / 76 L	30"L x 18"W x 10.5"H*
	10561	24 Gallon / 91 L	30"L x 18"W x 12.38"H* (White)

International Use	10556	16 Gallon / 61 L	30"L x 18"W x 8.5"H*
	10558	20 Gallon / 76 L	30"L x 18"W x 10.5"H*
	10560	24 Gallon / 91 L	30"L x 18"W x 12.38"H* (White)



**Add additional 3.2" to the height to accommodate the fill.*

PORTABLE FUEL TANKS

All tanks are molded from UV stabilized, high density polyethylene for excellent durability and long product life. New tooling and better quality finish result in superior products that customers demand.

- Convenient combination fuel pick-up / sight gauge
- Molded feet provide increased ventilation and stability
- Accepts standard 1/4 NPT marine tank fittings
- Seamless one-piece, sturdy, polyethylene tank shell construction
- International 11L and 20L tanks (Not ECO Check) meet CSA standards
- Advanced styling / highly functional design

Additional ECO Check features:

- Ethanol and Alcohol Compliant
- Meets ABYC / EPA / CARB standards
- Low permeation tank virtually eliminates fuel evaporation, retains octane value longer
- Automatic air inflow valve system



Under Seat Portable Fuel Tanks

10506 3 Gallon / 11.4 L 19.3"L x 12.2"W x 6.8"H
 10511 6 Gallon / 22.7 L 19.3"L x 12.2"W x 10.2"H

10504 11 L 19.3"L x 12.2"W x 6.8"H
 10509 20 L 19.3"L x 12.2"W x 10.2"H

Rectangular Portable Fuel Tanks

08667 9 Gallon / 34 L 22.9"L x 14.3"W x 11.5"H
 08668 12 Gallon / 45 L 22.9"L x 14.3"W x 13.9"H (Tall Profile)
 08669 12 Gallon / 45 L 24.5"L x 18.1"W x 11.5"H (Low Profile)

08189 9 Gallon / 34 L 22.9"L x 14.3"W x 11.5"H
 08190 12 Gallon / 45 L 22.9"L x 14.3"W x 13.9"H (Tall Profile)
 08191 12 Gallon / 45 L 24.5"L x 18.1"W x 11.5"H (Low Profile)



10836 Tank Positioning Kit

- Includes 2 aluminum L brackets and 4 x 1/4" - 20 bolts to fit Scepter tank inserts
- Designed for Scepter Topside and Permanent tanks
- For positioning purposes only

COMPARING INTERNATIONAL TO

Scepter offers a full line of portable and topside marine tanks in both ECO Check and International versions. Our ECO Checked range of tanks all incorporate barrier technologies allowing them to meet and surpass United States ABYC, EPA and CARB requirements and have been engineered to meet the demands of the USA marine market. The International versions of Scepter's portable and topside marine tank range meet applicable CSA requirements. Scepter's line of OEM Choice portable fuel tanks also meet CE, ISO and Standards Australia certification requirements.

Both ranges are virtually identical dimensionally. The only noticeable difference is the cap. The ECO Checked range has an EPA/CARB approved cap that must withstand 5 PSI of internal pressure even with the cap vent open to be able to meet the EPA/CARB requirements. International tanks come fitted with Scepter's industry standard manually vented marine cap.

How do I select the right version of tank?

All of the items and part numbers referenced within a green bar on this page are ECO Checked tanks and are designed and approved to be sold and used in the United States. All other items and part numbers referenced are for International Use.



eco ✓
For Sale in the US

Connects to Tank



Mercury EPA Approved

08309 3/8" I.D. Hose

EPA Approved Not Available

BRP EPA Approved

08313 3/8" I.D. Hose

Mercury 1998 & Newer

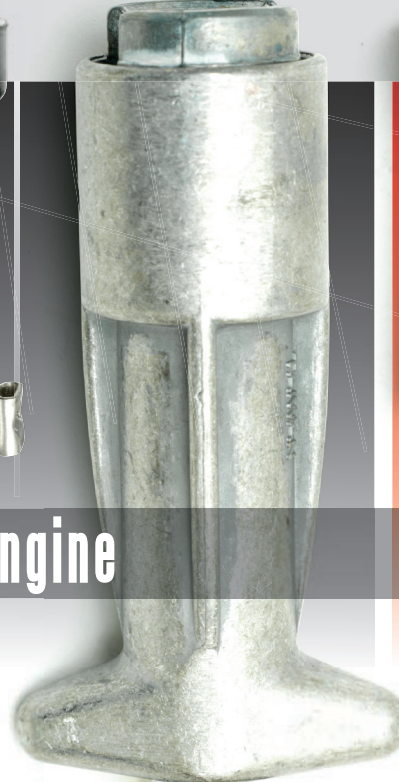
07482 3/8" I.D. Hose

Mercury Cast Aluminum

07483 3/8" I.D. Hose, Bayonet

BRP Johnson/Evinrude

07486 3/8" I.D. Hose



Connects to Engine

FUEL LINE ASSEMBLIES

- See primer bulb & fuel line to the right for additional features
- Provides maximum fuel flow & superior engine performance
- For 2 & 4 cycle applications
- ECO Checked fuel lines are fully compatible for today's new ethanol fuels
- Viton o-rings and internal stainless steel components ensure leak-proof connections
- Fittings designed & manufactured to strict OEM specifications

Additional EPA Approved Fuel Line Assemblies Features

- Low permeation
- Meets all EPA and CARB standards
- Meets 40 CFR 1060.102 "Low Emissions" requirements



Yamaha EPA Approved
08316 3/8" I.D. Hose



Honda EPA Approved
10140 3/8" I.D. Hose



Universal EPA Approved
08312 3/8" I.D. x 7' Hose
08311 3/8" I.D. x 12' Hose
08318 5/16" I.D. Hose



Yamaha
07489 3/8" I.D. Hose

Honda 1991 & Newer
09478 3/8" I.D. Hose

Universal
07485 3/8" I.D. x 7' Hose
07484 3/8" I.D. x 12' Hose
07491 5/16" I.D. Hose

The universal ends on our fuel line assemblies allow a customized fit by selecting the correct fuel line connectors for the application. See the previous page.



FUEL LINE COMPONENTS



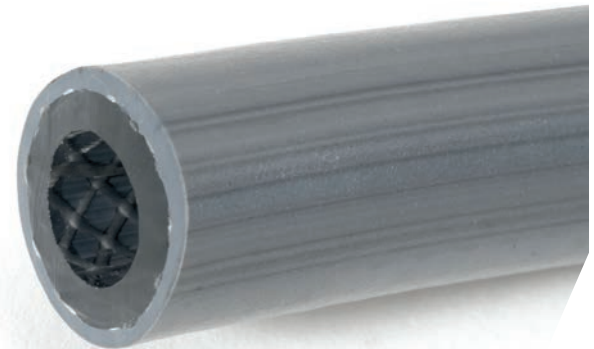
Primer Bulbs

- Maximizes engine performance
- Dual internal check valves reduce back flow leakage for fuel system prime to engine
- Gasoline and solvent-resistant construction
- Eco Checked products meet EPA/CARB Certified "Low Permeation" requirements
- "High Flow" capacity for quick, efficient priming
- Eco Checked products are designed for today's ethanol fuels



EPA Approved

05869	3/8" Hose Barbs	10541	3/8" Hose Barbs
07494	5/16" Hose Barbs	10542	5/16" Hose Barbs
07813	1/4" Hose Barbs	10543	1/4" Hose Barbs



Reinforced Topside Bulk Fuel Line, 50' Box

- Meets USCG B1-15, SAE J1527 standards
- Gray UV outer layer resists ozone, cold and heat
- ECO Checked products are designed for use with today's Ethanol fuels
- Multi-layered co-extrusion construction
- Kink resistant to ensures proper fuel flow
- For use with 2 & 4 cycle marine outboard engines
- Use with gas and diesel applications
- Designed for above deck applications only

EPA Topside Bulk Fuel Line, 50' Box

- Meets SAE J1527, Type B1-15, ISO-8469, Class 1 and CE and current EPA/CARB "Low Permeation" standards



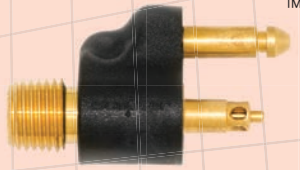
EPA Approved

07492	3/8" I.D. (B1)	08319	3/8" I.D. (B1)
07493	5/16" I.D. (B1)	08320	5/16" I.D. (B1)
08355	1/4" I.D. (B1)	10679	1/4" I.D. (B1)

TANK FITTING

TANK & ENGINE CONNECTOR

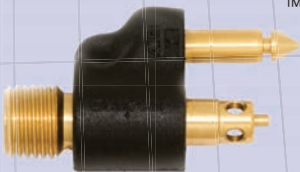
BRP



BRP Johnson / Evinrude

- 04068 1/4 NPT, Brass, Male, Tank Fitting
- 05787 5/16" Barb, Female, Tank & Engine Connector
- 05822 3/8" Barb, Female, Tank & Engine Connector

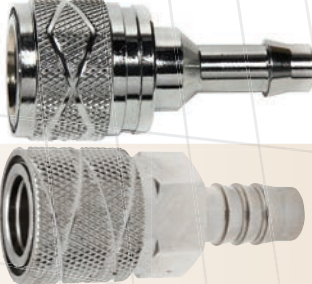
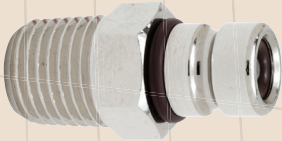
Y



Yamaha

- 04075 1/4 NPT, Brass, Male, Tank Fitting
- 05813 5/16" Barb, Female, Tank & Engine Connector
- 05815 3/8" Barb, Female, Tank & Engine Connector

C
F



Chrysler/Force Chrome Plated Brass

- 05801 1/4 NPT, Male, Tank Fitting
- 05800 5/16" Barb, Female, Tank & Engine Connector
- 05799 3/8" Barb, Female, Tank & Engine Connector

S



Suzuki Chrome Plated Brass, Engines Over 75 HP

- 04070 1/4 NPT, Male, Tank Fitting
- 05785 3/8" Barb, Female, Tank & Engine Connector
- 05781 5/16" Barb, Female, Tank & Engine Connector



Suzuki Chrome Plated Brass, Engines Up to 75 HP

- 04065 1/4 NPT, Male, Tank Fitting
- 05779 3/8" Barb, Female, Tank & Engine Connector

N
T



Nissan/Tohatsu Chrome Plated Brass, Engines Up to 90 HP

- 05811 1/4 NPT, Male, Tank Fitting
- 05810 3/8" Barb, Female, Tank & Engine Connector



Nissan/Tohatsu Chrome Plated Brass

- 07372 1/4 NPT, Male, Tank Fitting
- 05809 3/8" Barb, Female, Tank & Engine Connector

TM: The above fuel line connectors is a registered trademark of Scepter Canada Inc.

FUEL LINE CONNECTORS

TANK FITTING



TANK CONNECTOR



Honda Chrome Plate Brass, Engines Up to 90 HP
 05784 1/4 NPT, Male, Tank Fitting
 05778 3/8" Barb, Female, Tank Connector



Honda Chrome Plate Brass, 1991 & Newer Style Engines
 05829 1/4 NPT, Male, Tank Fitting
 05827 3/8" Barb, Female, Tank Connector

ENGINE CONNECTOR



Honda 2001 & Newer Style Engines
 05783 3/8" Barb, Plastic, Female, Engine Connector

TANK FITTING



TANK CONNECTOR



Mercury 1998 & Newer Style Engine
 05837 1/4 NPT, Brass, Male, Tank Fitting
 05793 3/8" Barb, Plastic, Female, Tank Connector

ENGINE CONNECTOR



05791 3/8" Barb, Plastic, Female, Engine Connector, Large (Yamaha & Mercury)

FEMALE BAYONET KIT



TANK CONNECTOR



Mercury Die Cast Bayonet Style
 09476 Female Kit: Includes 3/8" Barb (for connecting to engine), 1/4 NPT Straight & 90° Elbow Tank Fittings (for connecting to fuel tank)
 07497 3/8" Barb, Male, Tank Connector



Scepter is pleased to introduce bold new packaging in a new blue color scheme with text in English, French and Spanish for its entire line. The new packaging retains the customer-friendly color-coding system to instantly identify fittings and components that you are used to seeing on Scepter-branded items. Improvements include listing the part number on the front panel, for easier identification of the correct item and a color rear panel that highlights key information for easy reference. Our fresh new look retains the same physical dimensions so existing planograms will still work.

With its OEM Choice identification, your customers will enjoy the confidence of knowing they are buying the same OEM quality in aftermarket replacement parts that are supplied to original equipment manufacturers. And the prominent Eco Checked logo gives them the reassurance that Scepter products meet or exceed government emissions regulations, helping to improve air quality and reduce exposure to toxic chemicals. **Look for our all-new packaging and get ready to grow your profits in 2017!**



Combi Cap Gauge

- 09051 For 12L / 3 Gallon Tanks, 7"
- 08936 For 25L / 6 Gallon Tanks, 8"



Replacement Fuel Cap

- 08935 Manually Vented Cap
(Fits Most Scepter Tanks, non-EPA)



Replacement Fuel Cap

- 09315 EPA/CARB Cap with Chain & Tether
(Fits ALL Scepter EPA portable tanks)



09086 Replacement Fuel Cap Gasket

- Cap Gasket for Scepter Marine Tank Caps



09036 Marine Tank Spout Adapter Kit

- Connects to all Scepter marine tanks
- Great for transferring fuel, or emptying tanks at the end of the season

Fuel Pick-Up Elbow Assembly

- 09089 For 12L / 3.2 Gallon OEM Choice
- 09092 For 25L / 6.6 Gallon OEM Choice
- 09098 For 11.4L / 3 Gallon Neptune
- 09101 For 22.7L / 6 Gallon Neptune
- 09104 For 11.4L / 3 Gallon Dinghy Mate
- 09107 For 22.7L / 6 Gallon Dinghy Mate

Fuel Pick-Up Manifold Assembly

- 10840 For 11L / 3 Gallon New Aftermarket
- 10841 For 20L / 6 Gallon New Aftermarket
- 09209 For 34L / 9 Gallon
- 09210 For 45L / 12 Gallon Low
- 09221 For 45L / 12 Gallon Tall
- 08095 For 12L / 3.2 Gallon OEM Choice
- 08096 For 25L / 6.6 Gallon OEM Choice
- 09067 Manifold replacement Kit
(Flange gasket, screws & washers)



Includes flange gasket, screws and washers



10837 Expandable Tank Hold down Kit

- **Rubber insert in strap allows for tank expansion**
- 72" Long
- Kit includes two (2) universal nylon/rubber straps with quick-release buckle, four (4) stainless steel hold down brackets & mounting screws
- Multiple uses on or off the boat



07148 Topside Tank Hold down Kit

- 72" Long
- Kit includes two (2) universal nylon straps with quick-release buckle, four (4) stainless steel hold down brackets & mounting screws

DuraMax is a large, siphon based portable fuel container on wheels designed for industrial, commercial, and recreational applications. It is a safe, fast, and convenient way to refill boat engines, generators, lawn tractors, snowmobiles, ATVs, etc.

The DuraMax is ideally suited for cottage and marine applications. Made from high density polyethylene, the DuraMax fuel container is resistant to corrosion and denting. Its sturdy six-inch wheels and extra-deep handle make it easy to deliver fuel dockside when refueling boats or powered water craft.

Two shut-off valves, at both the tank and hose connector, make it safe and easy to disconnect the Flo n' go pump for refilling and transportation.

- Durable, high-density polyethylene in vibrant red for use with gasoline, diesel, or kerosene fuels
- 53 Liter (14 Gallon) volume capacity and a 305 cm (10') long fuel hose
- Includes a bolt on hanger for convenient hose storage
- Fluid transfer on level surfaces with minimal priming
- Meets D.O.T. and UN transportation requirements
- Child safety lock included



06792 Flo n' Go DuraMax

Replacement Parts

06932 Hose assembly

06823 Hose hanger



DuraMAX

The Safe, Fast & Convenient Way to Refill:

- | | | |
|-----------------------|----------------------|-----------------------|
| • Boat Engines | • Farm Equipment | • Chainsaws |
| • Jetski's | • ATV's / Dirt Bikes | • Generators |
| • Personal Watercraft | • Lawn Mowers | • Blowers |
| • Lawn Tractors | • Trimmers | • Edgers ...and more! |

Flo n' Go MaxFlo Siphon Pump

The Scepter Maxflo siphon pump sold separately or as part of a package that includes a fuel container, is ideal for larger applications including boat engines, Jet Skis/PWC, ATVs, snowmobiles, lawn tractors, farm equipment, pressure washers, snow throwers, and light commercial equipment.

- Maxflo delivers a flow rate of over 2 gallons per minute (7.5 L) when used in siphon mode
- Child safety lock included



08338 Flo n' Go Siphon Pump

08341 EPA/CARB Combo Kit
(with 5 Gallon fuel can)

Not for sale in the USA:

08266 Flo n' Go MaxFlo Universal

06922 Combo Kit
(with 25L fuel can)



EPA/CARB Jerry Cans

- Ergonomic handle makes refueling a breeze
- Compact size for easy storage
- Features a wide base for added stability
- New Easy Flo Spout exceeds today's standards



00001
1 Gal / 4L


00002
2 Gal / 8L

00003
5 Gal / 18.9L

00004
5 Gal / 18.9L / Diesel

00005
5 Gal / 18.9L / Kerosene

Jerry Can Replacement Parts

- Use only on Scepter fuel cans 
- Self-venting
- Closes automatically
- Spill-proof / child resistant



00072
Easy Flo Spout



05459
CDA Spout



00114
Capless Gas Tank Funnel

EPA/CARB Hi-Flo Jerry Can


- Vent allows for **2X flow rate!**
- Vent allows removal of built-up pressure
- Ergonomic handle makes refueling a breeze



New Design

00108
5 Gal / 18.8L / Gas

EPA/CARB Military Style Jerry Cans

- Easy to tie to stanchions and railings 
- Small footprint takes up less room
- Multilayer construction meets EPA / CARB emission regulations (except water can)
- Gas and diesel cans are complete with spill-proof spout



05086
5.3 Gal / 20L / Gas

05090
5.3 Gal / 20L / Diesel

Military Style Jerry Cans

- Easy to tie to stanchions and railings
- Small footprint takes up less room
- Complete with rear vent
- CSA / Standards Australia / UN certified
- Self venting spout included



03609
5.3 Gal / 20L / Gas

03711
5.3 Gal / 20L / Diesel

Scepter leads the industry with one of the most comprehensive lines of gas and specialty fuel cans in the industry. As the first manufacturer of portable fuel containers in North America back in 1959, Scepter has continued to lead the way, introducing new products, while maintaining the highest quality standards.

JERRY CANS

International Use Jerry Cans

Sold throughout Canada and around the globe, Scepter's Canadian and International range of portable fuel containers are manufactured from High Density Polyethylene providing a safe, noncorrosive, reliable alternative to filling a wide variety of gas-powered engines, in marine and non-marine applications. 5.3 Gallon (20L) and 6.6 Gallon (25L) jerry cans incorporate a child resistant vent on the handle to improve fuel flow rates!



07081
1.25 Gal / 5L

07079
2.5 Gal / 10L

07622
5.2 Gal / 20L

07539
6.6 Gal / 25L

07649
5.3 Gal / 20L / Diesel

07624
5.3 Gal / 20L / Kerosene

Military & Military Style Water Cans

- Easy to tie to stanchions and railings
- Small footprint takes up less room
- Complete with rear vent
- CSA / Standards Australia / UN certified
- Self venting spout included

- Screw-cap is locked in tightened position
- Large & small pouring spouts, with separate caps and breather caps



00107
5.3 Gal / 20L
ECO Water

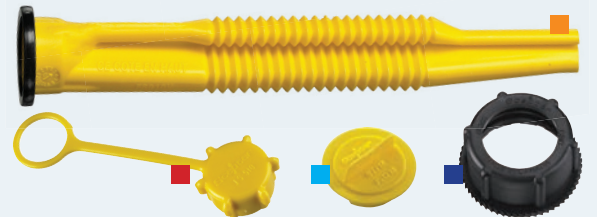
04933
5.3 Gal / 20L /
International Water



05587
2.5 Gal / 10L
Military Water

05935
5.3 Gal / 20L
Military Water

International Jerry Can Replacement Parts



03647
4 Piece

03583
3 Piece

08499
Stopper, 3 Pack

03629
Flexible Spout

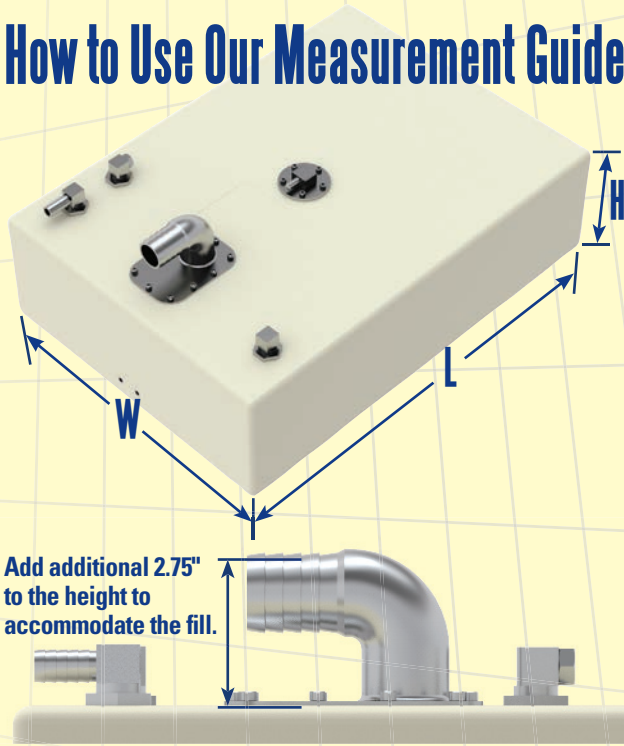


09643
Solid Cap
& Tether



10467
Capless Gas Tank Funnel

How to Use Our Measurement Guide



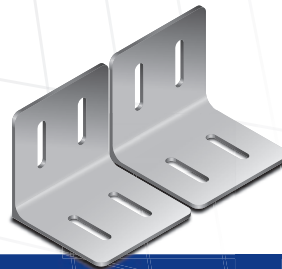
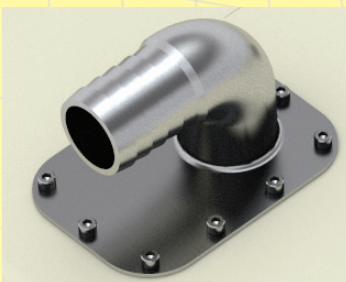
This brand new 16 tank range for boats manufactured pre-EPA regulations (2011) from 12 to 44 gallons / 45L to 166L, has been designed from the ground up, listening to distributors, marina mechanics and installers alike.

Ultra tough cross-linked polyethylene is the preferred choice for all fuel tank replacement applications; aluminum, fiberglass and older plastic tank models.

- 33 – 240 Ohm reed-style sender
- Diesel return fitting (can be used as a secondary fuel pick-up for auxiliary motors), internal tube not included
- Molded-in securement points
- All fittings and fill are right angled and parallel to the top of the tank for lower profile installation
- Stainless steel fuel fill requires 1.5" hose
- Machined aluminum 3/8" fittings
- Designed for today's modern gas, diesel and bio-fuel applications
- Meets or exceeds ABYC, NMMA and USCG requirements
- CE family certification
- Tank positioning kit available
- Visit sceptermarine.com for complete installation guidelines and instructions

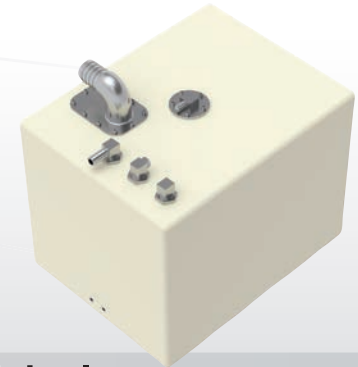
New NOMAD Fill System

- Reduces fuel turbulence entering the tank
- More rugged and durable than plastic fills, allowing for a more secure fill hose attachment using less flexible EPA and non-EPA fuel hoses
- Right angled and parallel to the top of the tank for lower profile installation



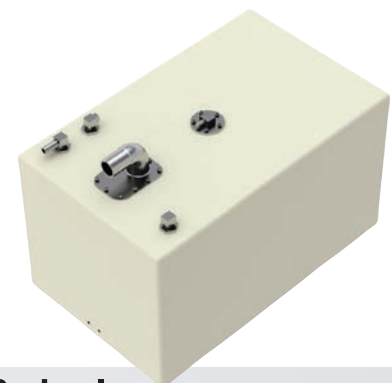
10836 Tank Positioning Kit

- Includes 2 aluminum L brackets and 4 x 1/4" - 20 bolts to fit Scepter tank inserts
- Designed for Scepter Topside and Permanent tanks
- For positioning purposes only



Rectangle

10652 14 Gallon / 53 L 18"L x 14"W x 14"H



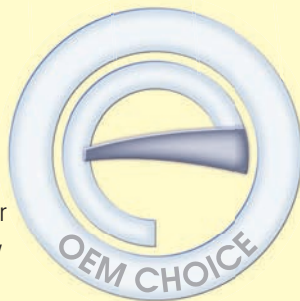
Rectangle

10659 25 Gallon / 94 L 26"L x 16"W x 15"H

OEM Choice

All tanks come equipped with standard OEM features that have boat and engine manufacturers relying on Scepter to provide innovation and quality that we are known for.

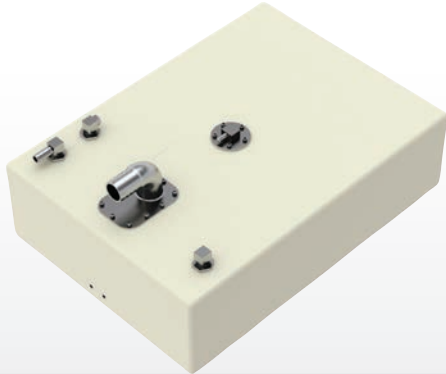
By offering OEM Choice products, we are providing you with quality parts that will let you sell the very best replacement parts available on the market.





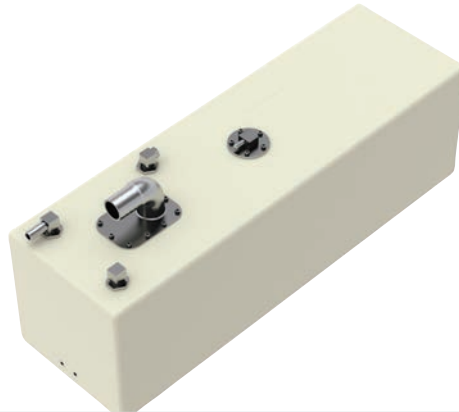
REPLACEMENT PERMANENT FUEL TANKS

Specifically manufactured for the Scepter program by our sister company Ameri-Kart, this is a NEW permanent tank replacement program, not simply a range of old tank designs run from old molds offered up for sale "as-is".



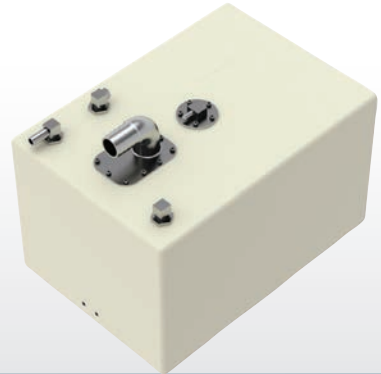
Low Profile

10649 12 Gallon / 45 L 25"L x 18"W x 7"H
 10653 18 Gallon / 68 L 25"L x 18"W x 10"H



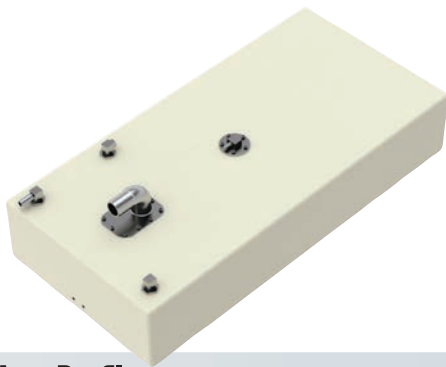
Low Profile

10650 12 Gallon / 45 L 32"L x 10"W x 10"H
 10654 17 Gallon / 64 L 32"L x 10"W x 14"H



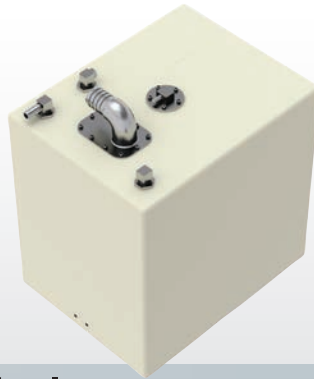
Rectangle

10651 13 Gallon / 49 L 20"L x 14"W x 12"H
 10656 18 Gallon / 68 L 20"L x 14"W x 16"H



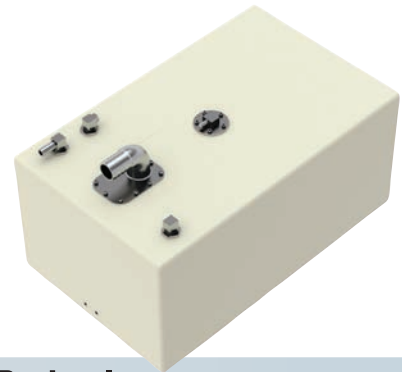
Low Profile

10655 18 Gallon / 68 L 37"L x 18"W x 7"H



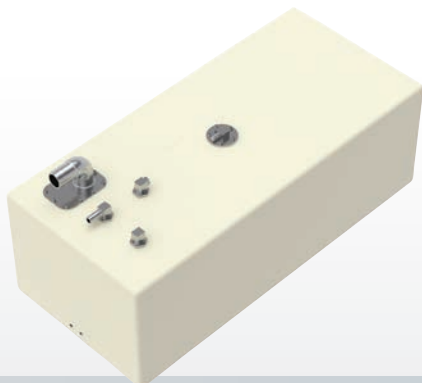
Rectangle

10657 18 Gallon / 68 L 18"L x 14"W x 18"H



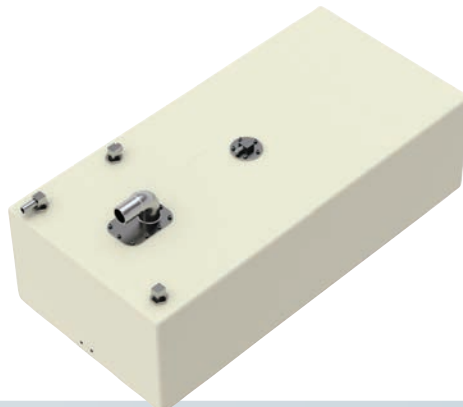
Rectangle

10658 20 Gallon / 75 L 26"L x 16"W x 12"H



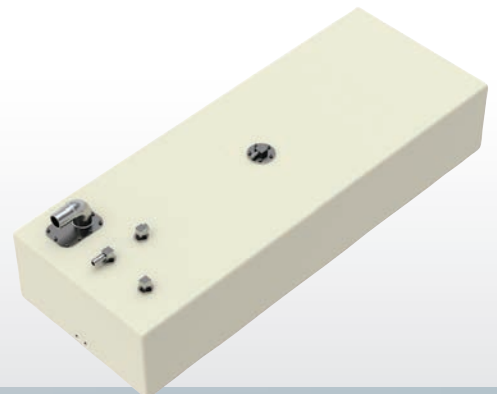
Rectangle

10660 27 Gallon / 102 L 35"L x 16"W x 12"H
 10663 36 Gallon / 136 L 35"L x 16"W x 16"H



Low Profile

10661 29 Gallon / 109 L 37"L x 18"W x 11"H



Low Profile

10662 30 Gallon / 113 L 47"L x 18"W x 9"H
 10664 44 Gallon / 166 L 47"L x 18"W x 13"H

Universal Electric Fuel Senders

- Adjusts from 8" to 24"
- Pre-calibrated
- Standard 5 hole SAE mounting pattern
- Heavy duty SAW steel flange and extension plates
- Rugged design
- Will not rust or corrode!
- Available in industry standard 33-240 Ohm's and 10-180 Ohm's
- Available with and without fuel gauge
- Tested to ensure accurate readings!

Included Gauge Features

White graphics on a black background provides easy readability and uniform style on modern and traditional boats. Automotive style lighting provides outstanding readability at night eliminating the "halo" around the dial edge.

- Scratch-resistant domed glass lens
- Complies with SAE j-1810



Universal Electric Fuel Senders

- 10636 8" - 24" Electric Fuel Sender (33-240 Ohm)
- 10637 8" - 24" Electric Fuel Sender (10-180 Ohm)

Universal Electric Fuel Sender with Gauge

- 10702 8" - 24" Electric Fuel Sender (33-240 Ohm) with Gauge
- 10703 8" - 24" Electric Fuel Sender (10-180 Ohm) with Gauge

Stainless Steel Reed Switch Senders

- Reed Switch fuel senders provide the most accurate fuel level reading
- Much more consistent than swingarm sending units
- Stainless steel construction provides efficient performance
- Pre-calibrated
- Available in industry standard 33-240 Ohm's and 10-180 Ohm's
- Complete with 5-hole gasket and screws
- Compatible with dash mounted gauge

33-240 Ohm's	0-180 Ohm's	Length
09920	10562	5", Tank Depth 6"
09921	10563	6", Tank Depth 7"
08350	10564	7", Tank Depth 8"
07169	10565	8", Tank Depth 9"
07170	10566	10", Tank Depth 11"
07171	10567	12", Tank Depth 13"
07172	10568	14", Tank Depth 15"
07173	10569	17", Tank Depth 18"
08351	10570	20", Tank Depth 21"
08352	10571	22", Tank Depth 23"

Fuel Sender Gasket Kits



- 10665 5-Hole **Viton**® Gasket & Screw Replacement Kit

PERMANENT TANK INSTALLATION ACCESSORIES



- Chemical resistant 1/2" OD rigid nylon hose
- Easily trims to fit fuel tank (1/2" from bottom)
- Included cylinder screen prevents debris from entering fuel system
- OEM replacement

Aluminum Withdrawal

07413	1/4 NPT	For Tanks up to 12"H
07414	1/4 NPT	For Tanks up to 24"H
10545	1/4 NPT	For Tanks up to 35"H



- Flexible Tygon hose with internal anti-kink spring
- Weighted brass foot places pickup at bottom of tank ensuring maximum fuel withdrawal
- Cylinder screen prevents debris from entering fuel system
- OEM replacement

Aluminum Withdrawal, Flexible Pick Up

10544	1/4 NPT	12" Flexible Pick-up with screen
10347	1/4 NPT	22" Flexible Pick-up with screen
10348	1/4 NPT	36" Flexible Pick-up with screen

Stainless Steel Deck Fills with Key

- Included chain prevents cap loss
- Included key helps prevent theft
- Polished, corrosion resistant stainless steel
- Includes gasket for positive deck seal
- Embossed cap provides easy fuel identification
- For 1-1/2" Hose
- No. 10 mounting screws included



10549	Gas Deck Fill, Stainless Steel
10550	Diesel Deck Fill, Stainless Steel
10551	Replacement Cap & Chain for use with 10549 & 10550

Deck Fills with Splash Guard

- Designed with flanged splash guard
- Corrosion resistant zamac coating
- Tool free keyless design
- Includes gasket for positive deck seal
- Embossed cap provides easy fuel identification
- No. 10 mounting screws included



10547	Gas Deck Fill, Zamac, for 1-1/2" Hose
10548	Replacement Cap & Chain for use with 10547 (not shown)

- Top quality self-adhesive neoprene pads adhere to most surfaces including cross-link HDPE
- Protect tanks and other products from scuffing, rubbing and chaffing
- Unaffected by diesel, regular and ethanol fuels



10686 (4 Self Adhesive 6" x 6" Pads) Poly Foam Fuel Tank Installation Pads





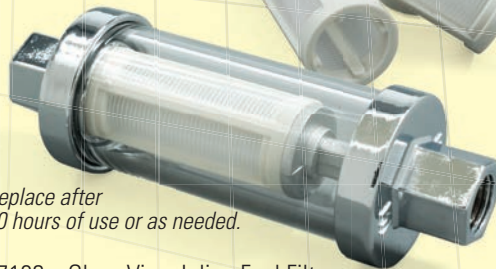
08024 Thread Sealing Tape

- Use on all threaded fittings

INLINE FUEL FILTERS

Glass View Inline Fuel Filters

- Glass housing allows easy inspection
- Removes foreign particles from fuel
- Universal barb kit included
- Excellent filtration
- Outboard engine use only!



Replace after 80 hours of use or as needed.

- 07109 Glass View Inline Fuel Filter Includes 3/8", 5/16", & 1/4" Barbs
- 07108 3 Pack Replacement Filters for 07109 Includes Gaskets

Disposable Inline Fuel Filters

- 10 Micron filtration
- Removes foreign particles from fuel
- Quickly see dirt and foreign particles in fuel
- Outboard engine use only!

Replace after 80 hours of use or as needed.



- 07480 Disposable In-Line Fuel Filter, 3/8" Barbs
- 07481 Disposable In-Line Fuel Filter, 5/16" Barbs

BRASS 3 & 4 WAY VALVES

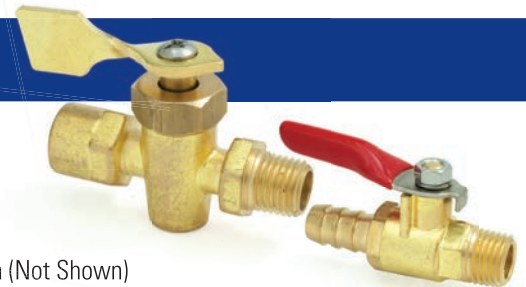
- ABYC compliant
- Brass construction
- Suitable for a wide variety of applications
- Ideal for multiple fuel withdrawal configurations
- Positive on/off control
- Anti-siphon protection
- Withdraws from 1 permanent tank at a time



07178	1/4" FNPT	Brass	3 Way	Connect 2 tanks to one motor
07182	3/8" FNPT	Brass	3 Way	Connect 2 tanks to one motor
07181	1/4 FNPT	Brass	3 Way (Click)	Connect 2 tanks to one motor
07180	1/4 FNPT	Brass	4 Way	Connect 3 tanks to one motor

SHUT OFF VALVES

07176	1/4 FNPT Male/Female	Brass
08362	1/4 NPT x 3/8" Barb	Brass
10572	1/4 NPT x 3/8" Barb	Aluminum (Not Shown)



VENTS

09024	Drain, Anchor	White Nylon	For 5/8" Vent Hose	2 per package
09033	Drain/Vent Short Cloud	White Nylon	"Knock in Barb"	2 per package
09030	Scoop Vent	White Nylon	Large 95 x 78 x 30 mm	2 per package
09056	Scoop Vent	Black Nylon	Large 95 x 78 x 30 mm	2 per package



ANTI SIPHON VALVES

- ABYC requirement for all permanent installed fuel tanks
- For gas fueled boats



15 (WC) Calibrated ASV equals .541 PSI or 27.99 mm HG of Mercury (201 HP Engine and Higher)

30 (WC) Calibrated ASV equals 1.083 PSI or 55.99 mm HG of Mercury (200 HP Engine and Less)



Brass

08364	1/4 NPT x 3/8" Barb	201 HP & Above	30
08365	3/8 NPT x 3/8" Barb	201 HP & Above	15

Aluminum

07220	1/4 NPT x 3/8" Barb	200 HP & Below	30
07221	3/8 NPT x 3/8" Barb	200 HP & Below	15

BRASS HOSE BARBS

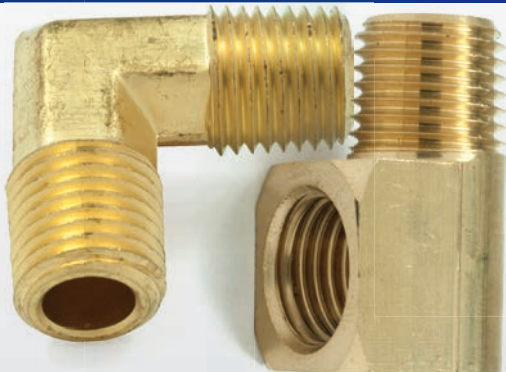


07201	1/4 NPT x 1/4" Barb	Male
07204	1/4 NPT x 3/8" Barb	Male
07207	1/4 NPT x 5/16" Barb	Male



07217	1/4 NPT x 1/4" Barb	Female
07218	1/4 NPT x 5/16" Barb	Female
07219	1/4 NPT x 3/8" Barb	Female

BRASS ELBOWS



07199	3/8 NPT	Male/Female	Brass Elbow
07212	1/4 NPT	Male/Female	Brass Elbow
07213	1/4 NPT	Male/Male	Brass Elbow

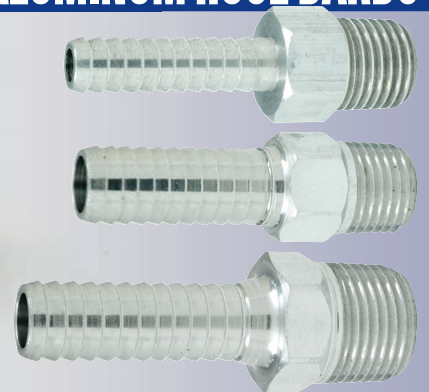
HOSE MENDERS



- Brass
- Stainless steel hose clamps included

07196	1/4" I.D. Hose Menders
07197	5/16" I.D. Hose Menders
07198	3/8" I.D. Hose Menders

ALUMINUM HOSE BARBS



07214	1/4 NPT x 1/4" Barb	Male
07215	1/4 NPT x 3/8" Barb	Male
07216	3/8 NPT x 3/8" Barb	Male

Turn & Snap Drain Plugs

- Durable
- Easy to use and installs easily
- Long lasting neoprene plug provides reliable seal
- Brass or Stainless Steel Construction
- Available in 1" and 1-1/4" O.D. size's



Stainless Steel

10668	Stainless Steel	Snap Drain Plug	1" O.D. Dia.	
10669	Stainless Steel	Turn Drain Plug	1" O.D. Dia.	
10690	Stainless Steel	Snap Drain Plug	1" O.D. Dia.	50 clear bowl
10691	Stainless Steel	Turn Drain Plug	1" O.D. Dia.	50 clear bowl

Brass

10666	Brass	Snap Drain Plug	1" O.D. Dia.	
10667	Brass	Turn Drain Plug	1" O.D. Dia.	
10670	Brass	Snap Drain Plug	1-1/4" O.D. Dia.	
10671	Brass	Turn Drain Plug	1-1/4" O.D. Dia.	
10688	Brass	Snap Drain Plug	1" O.D. Dia.	50 clear bowl
10689	Brass	Turn Drain Plug	1" O.D. Dia.	50 clear bowl



Through Drain

09021	Nylon Plug & Base	White	Medium
09027	Nylon Plug & Base	White	Large

Funnels

Scepter's funnels come in varying shapes and sizes for use by the home mechanic or the marine mechanic alike. These funnels are perfect for all marine uses including draining of oil and other fluids.

Includes:

- 4" (100mm)
- 6" (150mm)
- 8" (200mm)



03590 3 Funnel Assortment



03603 18" (455mm) Flexible Funnel



03595 18" (455mm) Rigid Funnel



08672 Multipurpose Funnel (3" O.D.)

MOTOR FLUSHERS

It's easy to flush salt and contaminants from all lower units with side water inlets using a standard garden hose and no other tools with Scepter's comprehensive motor flusher offering!



07393

Round Cup Motor Flusher

- Universal, for all lower units



07395

Rectangular Cup Motor Flusher

- Universal, for all lower units
- Ideal for use with low-pressure conditions
- Improved water flow with rectangular cups



09564

Pro Dual Feed Motor Flusher

- Universal, for all lower units
- For engines above 75 HP
- Heavy-duty metal hose attachment for frequent use



07790

Volvo Motor Flusher

- Fits 200; 250; 270; 280 & 290 HP lower units



07397

Adjustable Inboard Motor Flusher

- Large cup assures secure attachment to thru-hull water pick
- Telescoping tube installs quickly and easily
- Adjustable from 15-1/2" to 30"
- Allows precise alignment for hard-to-reach areas

10115

Fluid Transfer Pump

- Safely transfers liquids between approved containers
- Brass pump body
- For use with gas, oil, diesel fuel and water
- Removable nylon extraction tubing is easy to clean
- Fits most engine dipstick tubes
- Empty oil from inboards and I/O engines with ease!



09042 (2 Pack)

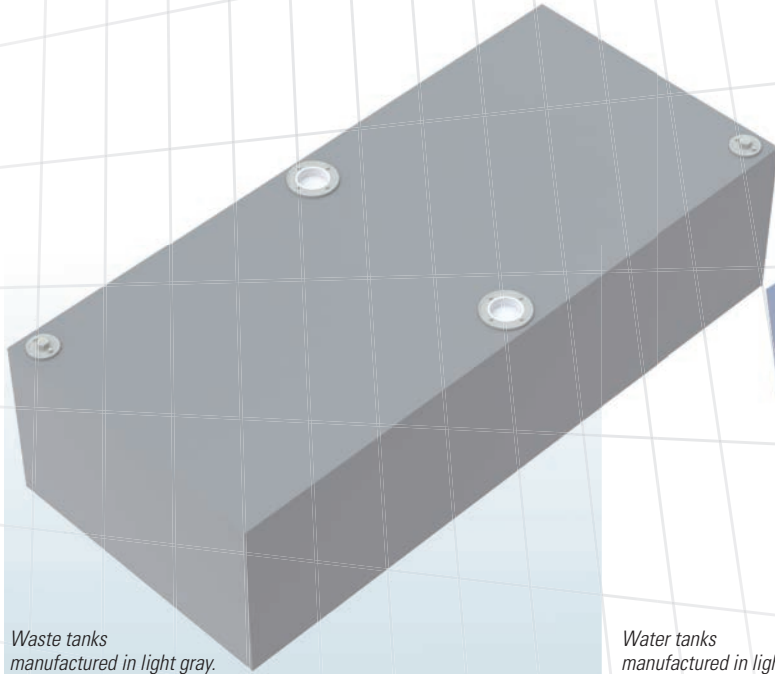
Garden Hose Adapter

- O-ring provides leak-free connection
- UV resistant for a longer life
- Works with 5/8" and 1/2" garden hoses

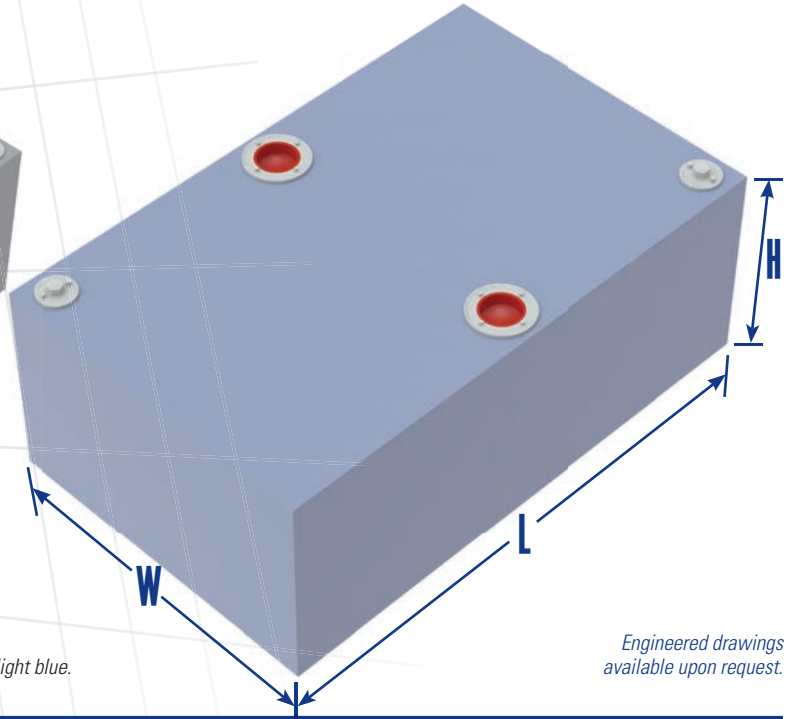


Also available in bulk! (08496)

- 12 Popular size's of both water / waste tanks to fit a wide variety of applications
- Manufactured from tough linear polyethylene
- Pre-installed threaded attachment points (2 x 1/2" & 2 x 1-1/2" threaded openings)
- FDA approved resins



Waste tanks manufactured in light gray.



Water tanks manufactured in light blue.

Engineered drawings available upon request.

Waste Tanks 0.25" / 6.35mm Wall Thickness

	Capacity
10585	5 Gal / 19L
10586	9 Gal / 34L
10587	12 Gal / 45L
10588	16 Gal / 60L
10589	19 Gal / 72L
10590	25 Gal / 94L
10591	30 Gal / 113L
10592	35 Gal / 132L
10593	40 Gal / 147L
10594	45 Gal / 166L
10595	50 Gal / 185L
10596	55 Gal / 208L

Water Tanks 0.187" / 4.7mm Wall Thickness

	Capacity	Inches	Millimeters
10573	6 Gal / 22L	16 L x 12 W x 8 H	41L x 30W x 20 H
10574	9 Gal / 34L	17 L x 14 W x 10 H	43L x 36W x 25 H
10575	13 Gal / 49L	24 L x 15 W x 9 H	61L x 38W x 23 H
10576	16 Gal / 60L	25 L x 11 W x 15 H	64L x 28W x 38 H
10577	20 Gal / 75L	21 L x 17 W x 14 H	53L x 43W x 36 H
10578	27 Gal / 102L	38 L x 17 W x 10 H	97L x 43W x 25 H
10579	32 Gal / 121L	29 L x 22 W x 12 H	74L x 56W x 30 H
10580	37 Gal / 140L	37 L x 15 W x 16 H	94L x 38W x 41 H
10581	41 Gal / 155L	31 L x 17 W x 19 H	79L x 43W x 48 H
10582	46 Gal / 174L	35 L x 20 W x 16 H	89L x 51W x 41 H
10583	51 Gal / 193L	31 L x 20 W x 20 H	79L x 51W x 51 H
10584	57 Gal / 215L	43 L x 13 W x 25 H	109L x 33W x 64 H

Water & Waste Tank Adapter Kits

10704 Straight / 90° Adapter Kit, Includes:

- 2 1/2 NPT x 1/2" Straight Barb
- 2 1-1/2 NPT x 1-1/2" Straight Barb
- 1 1-1/2 MNPT x 1/2" FNPT Reducer
- 2 1-1/2 NPT x 1-1/2" 90° Barb
- 2 1/2 NPT x 1/2" 90° Barb
- 1 Roll Thread Sealing Tape



07250 Water/Waste Relocation Kit, Includes:

- 1 4" ID Access Plate
- 1 1-1/2" NPT Plug
- 2 1/2" NPT Plug
- 2 5/8" Plastic Thru Hull Fitting (Supply & Vent)
- 2 1-1/2" Plastic Thru Hull Fitting
- 6 Stainless Steel Screws/Nuts
- 1 Roll Thread Sealing Tape





VIDEOS ON YouTube & vimeo



<https://www.youtube.com/channel/UCLgr--tJWbK-79FG--5kEQQ>



<https://vimeo.com/user42935359>



Notes:



DISTRIBUTED BY:

SCEPTER CANADA, HEAD OFFICE:
**170 Midwest Road,
Scarborough, Ontario, Canada M1P 3A9
416.751.9445 / 800.387.6018**

SCEPTER USA, MANUFACTURING AND DISTRIBUTION:
**404 26th Ave. N.W.,
Miami, Oklahoma, USA 74534**

VISIT US ONLINE:
sceptermarine.com



©2016 Scepter Canada Inc., a Myers Industries Company.
The Scepter Marine logo is a registered trademark of
Myers Industries Company. Printed in the USA.

QUALITY, PERFORMANCE, RELIABILITY

Please note: Actual products may differ from images shown. Products are subject to change without notice.