



CAN/ULC S-604



CAN/ULC S-610



MODEL JSC

INSULATED STAINLESS STEEL CHIMNEY

FUEL



GAS



WOOD

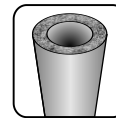
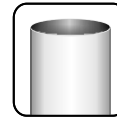
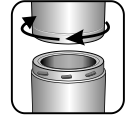


OIL



COAL

PRODUCT FEATURES

SOLID PACK
INSULATEDSTAINLESS STEEL
(MIRROR FINISH)EMBOSSED COUPLER
TWIST-LOCK
CONNECTION

A proud member and supporter of the following associations:



SuperVent Model JSC Technical Data Sheet

CERTIFICATION & APPLICATIONS:

SuperVent Model JSC is Safety Tested and Listed to applicable UL/ULC Standards.

These include:

USA: UL 103-HT

Safety Standard for chimneys serving solid fuel and liquid fuel applications. This chimney system has been designed for use on wood stoves, fireplaces and residential furnaces in the U.S. market. Allowable Flue Gas Temperatures are:

Maximum Continuous	1,000 degrees F / 540 degrees C
Brief Forced Firing	1,400 degrees F / 760 degrees C (60 minutes)
Creosote Burn Out	2,100 degrees F / 1,150 degrees C (3 x 10 minutes)

Canada: ULC S-604

Safety Standard for chimneys serving liquid/gas fuel appliances. This chimney system may be used on appliances that burn Oil or Gas.

Canada: ULC S-610

SuperVent Model JSC may also be used with specifically listed factory-built fireplaces, as in the Model 640 and Model HE40 which are listed with either 6" or 7" diameter chimney.

CLEARANCE TO COMBUSTIBLE MATERIALS:

A 2" clearance to combustible materials must be maintained at all times, except in areas protected by factory supplied supports certified for reduced clearance.

CONSTRUCTION:

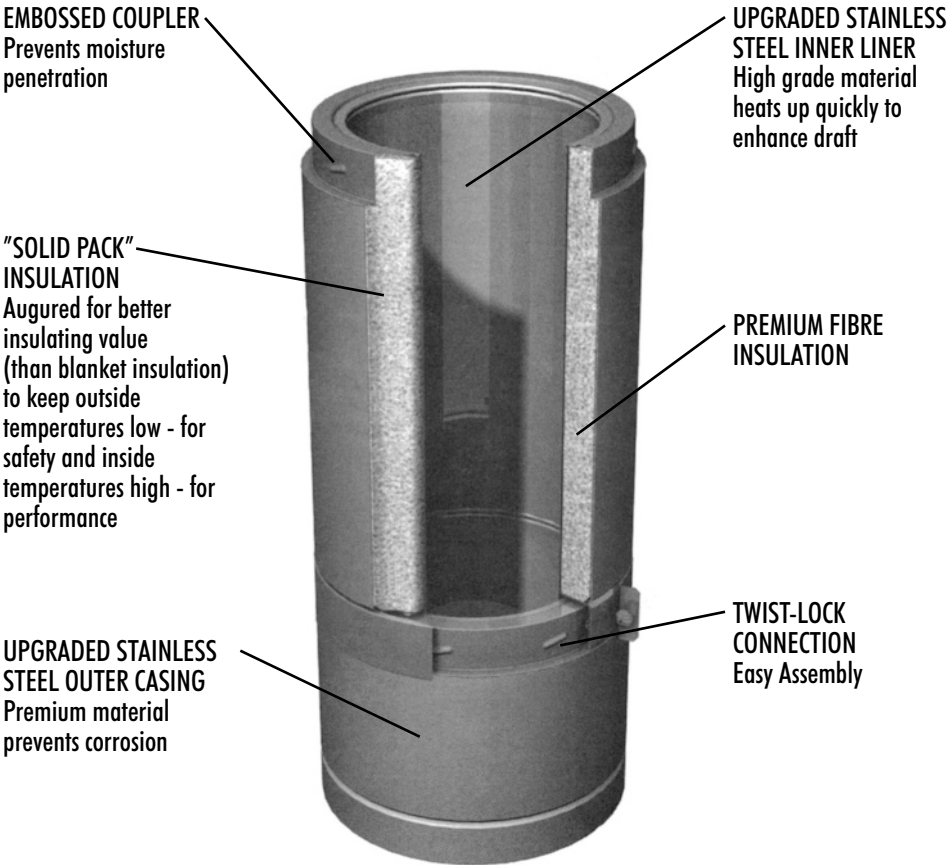
Inner Liner (Flue):	Upgraded Stainless Steel. 0.016" thickness
Outer Casing:	Upgraded Stainless Steel 0.015" thickness Note: All SuperVent Twist-Lock Couplers are embossed (not lanced) and seams are weather-proofed to prevent moisture from entering the chimney.

Insulation:
The 1" space between inner/outer walls is Solid Packed with Mineral Wool Fibre insulation to provide superior insulating qualities, in a "slim-line" design. Solid Pack design performs favorably to Blanket type and Air-Cooled chimney designs.

SUPPORTS/FRAMING

All SuperVent Supports are designed to carry four times the combined weight of each system at maximum allowable height.

Support and Framing Dimensions Table				
	Ceiling Support	Wall Support	Cath. Ceiling Support	Roof Support
Support	50'	38'	38'	50'
Diameter	Framing Dimensions			
5" Dia.	12-3/8" x 12-3/8"	14-3/8" x 14-3/8"	11" x 11"	N/A
6" Dia.	12-3/8" x 12-3/8"	14-3/8" x 14-3/8"	12" x 12"	N/A
7" Dia.	13-3/8" x 13-3/8"	14-3/8" x 14-3/8"	13" x 13"	N/A
8" Dia.	14-3/8" x 14-3/8"	14-3/8" x 14-3/8"	14" x 14"	N/A



The Best Warranty in the Industry
SuperVent features an advanced engineering design and premium quality material which allow us to offer a Lifetime Warranty on all component parts. See written warranty for details.

Support Kits

SuperVent has put together 3 chimney kits to get your project done . . .

Model JSC has taken the guess work out of chimney installation by putting the most common parts for each installation all in one box. These 3 kits depict the most common installations. Simply decide which of these scenarios fits your need, then pick up your chimney lengths, roof flashing and elbows (if required).

CEILING SUPPORT KIT

"My chimney runs straight up through the ceiling."

When your chimney goes up through a ceiling, then thru the roof, you'll need the MODEL JSC DECORATOR CEILING SUPPORT INSTALLATION KIT - JSC*DCSK

- Deluxe Rain Cap
- Attic Insulation Shield
- Decorator Ceiling Support
- Stove Pipe Adaptor

NOTE: In Canada, for a two story application, purchase the Ceiling Support Installation Kit and install an additional Firestop Radiation Shield to provide proper fire stopping. In USA, for a two story application, purchase the Ceiling Support Installation Kit and install an additional Firestop Radiation Shield to provide proper fire stopping.

. . . Now you just need your roof flashing and chimney lengths.



SIZE	PRODUCT CODE
5"	JSC5DCSK
6"	JSC6DCSK
7"	JSC7DCSK
8"	JSC8DCSK

Cathedral Ceiling Support Kit

"My chimney runs out the roof through a cathedral ceiling."

When your chimney goes out a cathedral or open beam ceiling, you may choose the MODEL JSC CATHEDRAL CEILING SUPPORT INSTALLATION KIT - JSC*CCSK

- Deluxe Rain Cap
- Cathedral Ceiling Support
- Draw Band
- Trim Kit
- Stove Pipe Adaptor

. . . Now you just need your roof flashing and chimney lengths



SIZE	PRODUCT CODE
6"	JSC6CCSK
7"	JSC7CCSK
8"	JSC8CCSK

Wall Support Kit

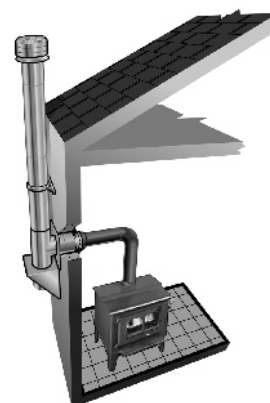
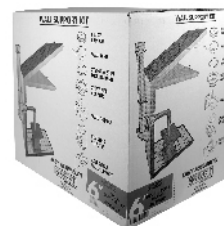
"My chimney runs out the wall and then straight up."

When your chimney goes out a wall and then runs straight up, you'll need the MODEL JSC WALL SUPPORT INSTALLATION KIT - JSC*WSK

- Deluxe Rain Cap
- Wall Bands (2)
- Stove Pipe Adaptor
- Wall Thimble
- Stainless Steel Tee with Plug
- Adjustable Wall Support

. . . Now you just need:

- Vertical Chimney lengths
- Through the wall length (must extend at least 3" into the room)
- 12" chimney length or insulated tee plug (installed below the stainless steel tee)

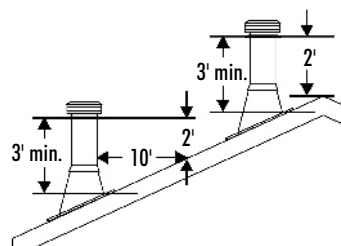


SIZE	PRODUCT CODE
5"	JSC5WSK
6"	JSC6WSK
7"	JSC7WSK
8"	JSC8WSK

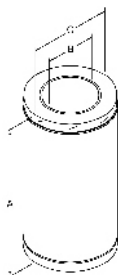
Stainless Steel Chimney Lengths

HEIGHT REQUIREMENTS

The chimney must extend at least three feet above the highest point where it passes through the roof surface and at least two feet higher than any part of the building within a horizontal distance of ten feet.



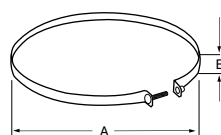
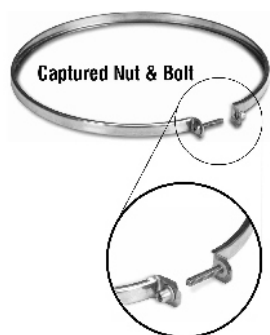
Chimney Sections



- Slim, advanced design allows for installation between 16" centers and still provides 2" clearance from combustible material.
- Secure twist-lock design couples sections together with just a 1/8 of a turn.
- Sectional overlap of 1-1/8".
- Chimney is sized according to the inner diameter and is available in 5, 6, 7 and 8".

Size	Dimensions			Product Code	Pack
	A	B	C		
5" x 36"	36"	5"	7"	JSC5SA3	1
5" x 24"	24"	5"	7"	JSC5SA2	1
5" x 18"	18"	5"	7"	JSC5SA18	1
5" x 12"	12"	5"	7"	JSC5SA1	1
5" x 6"	6"	5"	7"	JSC5SA6	2
6" x 36"	36"	6"	8"	JSC6SA3	1
6" x 24"	24"	6"	8"	JSC6SA2	1
6" x 18"	18"	6"	8"	JSC6SA18	1
6" x 12"	12"	6"	8"	JSC6SA1	1
6" x 6"	6"	6"	8"	JSC6SA6	2
7" x 36"	36"	7"	9"	JSC7SA3	1
7" x 24"	24"	7"	9"	JSC7SA2	1
7" x 18"	18"	7"	9"	JSC7SA18	1
7" x 12"	12"	7"	9"	JSC7SA1	1
7" x 6"	6"	7"	9"	JSC7SA6	2
8" x 36"	36"	8"	10"	JSC8SA3	1
8" x 24"	24"	8"	10"	JSC8SA2	1
8" x 18"	18"	8"	10"	JSC8SA18	1
8" x 12"	12"	8"	10"	JSC8SA1	1
8" x 6"	6"	8"	10"	JSC8SA6	2

STAINLESS STEEL LOCKING BANDS

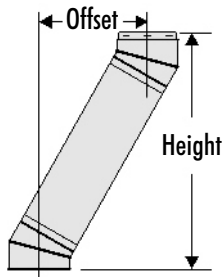


- Two flanges engage the grooves in each end of the adjoining sections holding them securely together.
- New design with convenient Captured Nut & Bolt.
- Locking Bands must be used:
 - on all sections that make up an offset.
 - on tee branch to attach a chimney length.
 - on any length suspended below the Cathedral or Roof Support.
- While Locking Bands are not required on other chimney lengths, their use is recommended for added safety and stability. It also provides a more attractive appearance.

Size	Dimensions		Product Code	Pack
	A	B		
5"	7"	7/16"	JSC5SLB	5
6"	8"	7/16"	JSC6SLB	5
7"	9"	7/16"	JSC7SLB	5
8"	10"	7/16"	JSC8SLB	5

Stainless Steel Tees & Elbows

CHIMNEY OFFSET CHARTS



This chart has three columns for elbow angle required to achieve your desired offset. The first column ("Offset") is the horizontal measurement, at the chimney center line, of the offset needed to get around an obstacle. The second column ("Height") is the height of the assembled offset elbow to the top of the return elbow. Column 3 shows the appropriate lengths required.

1. Determine the distance of the offset required.
2. On the chart, find the predetermined distance required for the elbow kit under the corresponding chimney diameter.

3. After finding the offset, follow across the chart to find the specified height and appropriate chimney lengths required under their corresponding diameters.

All measurements in inches. Offset tolerances \pm one inch.

30° OFFSET CHART

Offset				Height				Lengths Required				
5"	6"	7"	8"	5"	6"	7"	8"	6"	12"	18"	24"	36"
3	2-3/4	3-1/8	3-1/2	10	11-5/8	13	14-1/2	—	—	—	—	—
5-1/4	5-1/4	5-5/8	6	14	15-7/8	17-1/4	18-3/8	1	—	—	—	—
9	8-1/4	8-5/8	9	19-1/4	21	22-3/8	24	—	1	—	—	—
11-1/4	11-1/4	11-5/8	12	24-1/2	26-1/4	27-5/8	29-1/8	—	1	—	—	—
14-1/4	14-1/4	14-5/8	15	29-3/4	31-3/8	32-7/8	32-3/8	—	—	—	1	—
—	16-5/8	17	17-1/8	—	35-5/8	37	38-1/2	1	—	—	1	—
25-1/4	20-1/4	20-5/8	21	39-1/2	41-7/8	43-1/4	44-3/4	—	—	—	—	1
—	22-5/8	23	23-1/2	—	46	47-1/2	49	1	—	—	—	1
—	22-5/8	26	26-1/2	—	51-1/4	52-5/8	54-1/8	—	1	—	—	1
—	28-5/8	29	29-1/2	—	56-3/8	57-3/8	59-3/8	—	—	1	—	1
—	31-5/8	32	32	—	61-5/8	63	64-1/2	—	—	—	1	1
—	34-1/8	34-1/2	35	—	65-7/8	67-1/4	68-3/4	1	—	—	1	1
—	37-1/8	37-1/2	38	—	71	72-1/2	74	—	1	—	1	1
42	—	—	—	70	—	—	—	—	—	—	—	2

15° OFFSET CHART

Offset				Height				Lengths Required				
5"	6"	7"	8"	5"	6"	7"	8"	6"	12"	18"	24"	36"
1-1/2	1-1/8	1-1/8	1-1/4	9	10	10-1/4	10-3/4	—	—	—	—	—
2-1/8	2-3/8	2-3/8	2-1/2	13-1/2	14-1/4	15	15-5/8	1	—	—	—	—
4	4	4	4	19-1/8	20-1/2	20-3/4	21	—	1	—	—	—
5-1/2	5-1/2	5-1/2	5-1/2	25	26-1/4	26-1/2	26-3/4	—	—	1	—	—
7-1/2	7	7	7	30-1/2	32	32-1/4	32-1/2	—	—	—	1	—
—	8-3/8	8-3/8	8-3/8	—	36-3/4	37	37-1/4	1	—	—	1	—
10-1/8	10-1/8	10-1/4	10-1/4	42	43-5/8	44	44-1/8	—	—	—	—	1
—	11-3/8	11-1/2	11-1/2	—	48-3/8	48-5/8	48-7/8	1	—	—	—	1
—	13	13	13	—	54-1/8	54-3/8	54-5/8	—	1	—	—	1
—	14-1/2	14-1/2	14-5/8	—	60	60-1/8	60-3/8	—	—	1	—	1
—	16-1/8	16-1/8	16-1/8	—	65-3/4	66	66-1/4	—	—	—	1	1
—	17-3/8	17-3/8	17-3/8	—	70-1/2	70-3/4	71	1	—	—	1	1
—	19	19	19	—	76-1/4	76-1/2	76-3/4	—	1	—	1	1
20	—	—	—	76	—	—	—	—	—	—	—	2

45° OFFSET CHART

Offset				Height				Lengths Required				
5"	6"	7"	8"	5"	6"	7"	8"	6"	12"	18"	24"	36"
4-1/2	--	5	5-1/4	10-1/8	--	11	12	--	--	--	--	--
8	--	8-1/2	8-3/4	13-1/2	--	14-1/4	15	1	--	--	--	--
12-1/8	--	13-3/8	14	17-1/2	--	18-1/2	9-1/2	--	1	--	--	--
16-1/2	--	17	16-1/2	21-1/4	--	23	24-1/4	--	--	1	--	--
20-3/4	--	22	21-1/2	26-3/4	--	27	27-1/4	--	--	--	1	--
--	--	25-3/8	--	--	--	31-5/8	--	1	--	--	1	--
30-1/4	--	30-1/2	31	33-5/8	--	34-1/2	35-1/2	--	--	--	--	1
--	--	33-1/8	--	--	--	38-1/8	--	1	--	--	--	1
--	--	37	--	--	--	42-3/8	--	--	1	--	--	1
--	--	41-1/4	--	--	--	46-1/2	--	--	--	1	--	1
--	--	46-1/2	--	--	--	51-7/8	--	--	--	--	1	1
--	--	50	--	--	--	56-1/4	--	1	--	--	1	1
--	--	54-1/4	--	--	--	60-1/2	--	--	1	--	1	1
58	--	54-1/2	56	58-1/2	--	61-1/2	60-1/4	--	--	--	--	2

INSULATED 15°, 30°, AND 45° ELBOW KITS

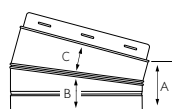
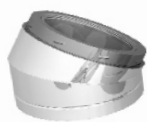
- The insulated elbow is used when offset is required.
- Locking Bands must be used on all elbows.
- A maximum of 6 feet is allowable between offsets.
- Elbow is fully insulated and can be used at the same 2" clearance chimney lengths.
- Elbow support must be used with all offset installations.
- Elbows do not have locking ridges and can be rotated to attain optimum positioning offset, and allow chimney to return to correct vertical alignment, prior to installing Locking Bands.

ELBOW KITS INCLUDE:

2 Elbows, 4 Locking Bands & 1 Elbow Support

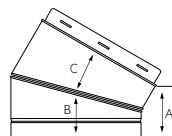


15° ELBOW KIT



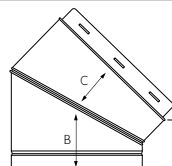
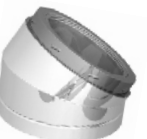
Size	Dimensions			Product Code	Pack
	A	B	C		
15° - 5"	3-3/8"	2-7/16"	1-15/16"	JSC5SEK	1
15° - 6"	3-3/8"	2-1/2"	2"	JSC6SEK	1
15° - 7"	3-3/8"	2-9/16"	2-1/16"	JSC7SEK	1
15° - 8"	3-3/8"	2-5/8"	2-1/8"	JSC8SEK	1

30° ELBOW KIT



Size	Dimensions			Product Code	Pack
	A	B	C		
30° - 5"	2-3/4"	2-9/16"	2-9/16"	JSC5SE3K	1
30° - 6"	3-1/4"	3-1/16"	2-9/16"	JSC6SE3K	1
30° - 7"	3-3/4"	3-7/16"	2-15/16"	JSC7SE3K	1
30° - 8"	4-1/4"	3-7/8"	3-3/8"	JSC8SE3K	1

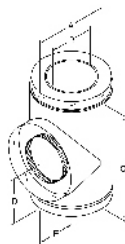
45° ELBOW KIT



Size	Dimensions			Product Code	Pack
	A	B	C		
45° - 5"	1-15/16"	2-3/4"	2-3/8"	JSC5SE4K	1
45° - 6"	2-1/8"	3-1/8"	2-9/16"	JSC6SE4K	1
45° - 7"	2-3/8"	3-3/8"	3"	JSC7SE4K	1
45° - 8"	2-9/16"	3-3/4"	3-5/16"	JSC8SE4K	1

Stainless Steel Tees & Elbows

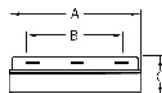
INSULATED TEE WITH PLUG



- Insulated tee is for through the wall installation using a Wall Support.
- It allows the horizontal connection of the chimney to the appliance and provides access for inspection and cleaning.
- Includes twist-lock Tee Plug.

Size	Dimensions					Product Code	Pack
	A	B	C	D	E		
5"	7"	5"	10-1/2"	5"	5"	JSC5SITS	1
6"	8"	6"	11-1/2"	5-5/8"	5-3/4"	JSC6SITS	1
7"	9"	7"	12-1/4"	6-1-4"	6-3/16"	JSC7SITS	1
8"	10"	8"	13-3-8"	6-5/8"	6-1/2"	JSC8SITS	1

INSULATED TEE PLUG

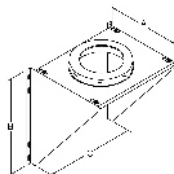
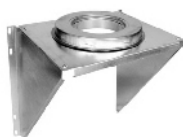


- Twist locks into bottom of Wall Support.
- Removable to provide easy access for chimney maintenance and inspection.
- Insulated to help maintain flue gas temperature.

Size	Dimensions			Product Code	Pack
	A	B	C		
5"	7"	5"	2-7/8"	J51TPI	1
6"	8"	6"	2-7/8"	J61TPI	1
7"	9"	7"	2-7/8"	J71TPI	1
8"	10"	8"	2-7/8"	J81TPI	1

Supports

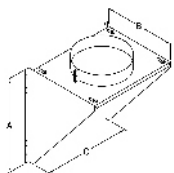
ADJUSTABLE WALL SUPPORT



- Supports up to 38 feet of chimney. If chimney extends over 38 feet, Adjustable Intermediate Wall Support must also be used.
- Includes Wall Support top plate with female coupler attached, male coupler, side brackets and hardware.

Size	Dimensions			Product Code	Pack
	A	B	C		
5"	11"	17-1/8"	16"	JSC5AWS	1
6"	11"	17-1/8"	16"	JSC6AWS	1
7"	12"	17-1/8"	16"	JSC7AWS	1
8"	13"	17-1/8"	16"	JSC8AWS	1

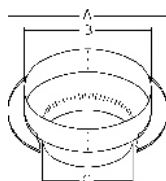
ADJUSTABLE INTERMEDIATE WALL SUPPORT



- Used as supplementary support when chimney system height exceeds maximum height allowed by Wall Support.
- Supports an additional 38 feet of chimney.
- Includes Top Plate, Support Band, Side Brackets and Hardware.

Size	Dimensions			Product Code	Pack
	A	B	C		
6"	11"	17-1/8"	16"	JSC6AIWS	1
7"	12"	17-1/8"	16"	JSC7AIWS	1
8"	13"	17-1/8"	16"	JSC8AIWS	1

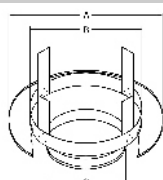
DECORATOR CEILING SUPPORT-SPUN



- Supports up to 50 feet of chimney.
- Matte black support gives a finished appearance.

Size	Dimensions			Product Code	Pack
	A	B	C		
5"	17-7/8"	11-3/8"	7-1/4"	JSC5DCSS	1
6"	17-1/8"	12-3/8"	8-1/4"	JSC6DCSS	1
7"	17-1/8"	13-3/8"	9-1/4"	JSC7DCSS	1
8"	19-5/8"	14-3/8"	10-1/4"	JSC8DCSS	1

DECORATOR CEILING SUPPORT

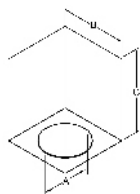


- Supports up to 50 feet of chimney.
- Matte black support gives a finished appearance.

Size	Dimensions			Product Code	Pack
	A	B	C		
6"	17-7/8"	12-3/8"	8-1/4"	JSC6DCS	1
8"	19-5/8"	14-3/8"	10-1/4"	JSC8DCS	1

Supports continued

CATHEDRAL CEILING SUPPORT BOX

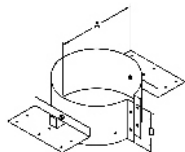


Add JUSI (pg. 11) to the Cathedral Ceiling Support for increased performance and safety.

- Used in pitched ceiling installations.
- Supports up to 38 feet of chimney.
- Matte black finish.

Size	Dimensions			Product Code	Pack
	A	B	C		
5"	7-3/16"	11"	17-1/2"	JSC5CCSB	1
6"	8-3/16"	12"	17-1/2"	JSC6CCSB	1
7"	9-3/16"	13"	17-1/2"	JSC7CCSB	1
8"	10-3/16"	14"	17-1/2"	JSC8CCSB	1

ROOF SUPPORT

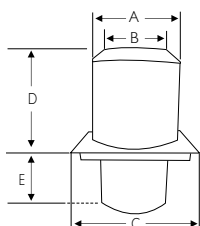


- The Roof Support adjusts to any roof pitch.
- It may be used above an offset to support the offset or as a supplementary support when the chimney height exceeds that of the primary support.
- Supports up to 50 feet of chimney.

Size	Dimensions		Product Code	Pack
	A	B		
5"	7"	5"	JSC5RS	1
6"	8"	5"	JSC6RS	1
7"	9"	5"	JSC7RS	1
8"	10"	5"	JSC8RS	1

Shields

ATTIC INSULATION SHIELD

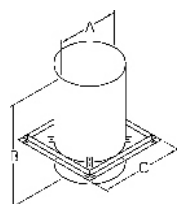
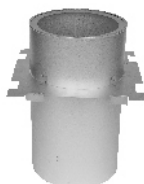


Add JUSI (pg. 11) to the Attic Insulation Shield for increased performance and safety.

- The AIS must be installed where the chimney enters the attic space in any installation.
- When fully extended the AIS provides joist shielding.
- Designed to keep insulation away from the chimney, and to maintain the mandatory 2" clearance to combustibles.

Size	Dimensions					Product Code	Pack
	A	B	C	D	E		
5"	11"	7"	13"	11-13/16"	8-1/2"	JSC5AIS	1
6"	12"	8"	14"	11-13/16"	8-1/2"	JSC6AIS	1
7"	13"	9"	15"	11-13/16"	8-1/2"	JSC7AIS	1
8"	14"	10"	16"	11-13/16"	8-1/2"	JSC8AIS	1

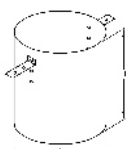
FIRESTOP RADIATION SHIELD



- Also known as Firestop Joist Shield.
- Required where a chimney passes from one living space to another living space or occupied attic space.
- Maintains the mandatory two inch clearance to combustibles.
- Shields the joist space from heat radiation.

Size	Dimensions			Product Code	Pack
	A	B	C		
5"	9"	19"	13"	JSC5FRS	1
6"	10"	19"	14"	JSC6FRS	1
7"	11"	19"	15"	JSC7FRS	1
8"	12"	19"	16"	JSC8FRS	1

RAFTER RADIATION SHIELD

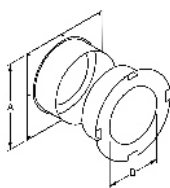


- Must be installed where the chimney is enclosed immediately below the roof line.

Size	Dimensions		Product Code	Pack
	A	B		
5"	9"	12"	JSC5RRS	1
6"	10"	12"	JSC6RRS	1
7"	11"	12"	JSC7RRS	1
8"	12"	12"	JSC8RRS	1

Shields continued

WALL THIMBLE



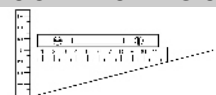
Add JUSI (pg. 11) to the Wall Thimble for increased performance and safety.

- Used in a wall support installation.
- Radiation shield is included with spacers which maintain the mandatory two inch clearance to combustibles.
- Attractive matte black finishing trim is included. (not shown in diagram)
- Extends to fit 7" wall thickness.

Size	Dimensions		Product Code	Pack
	A	B		
5"	16"	7-1/8"	JSC5WT	1
6"	16"	8-1/8"	JSC6WT	1
7"	16"	9-1/8"	JSC7WT	1
8"	16"	10-1/8"	JSC8WT	1

Flashings and Storm Collars

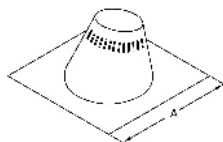
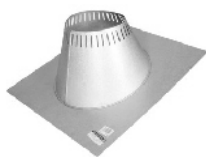
ROOF FLASHING SELECTION CHART



In this example, the pitch is 3/12.
0/12 - 6/12 Roof Pitch = JSC*AAF
6/12 - 12/12 Roof Pitch = JSC*AF2

To determine what Roof Flashing you'll require, you must work out the pitch of your roof. To determine the pitch, you'll need two rulers and a level. Measure the number of inches from the end of the level down to the roof.

ADJUSTABLE FLASHING - FLAT to 6/12

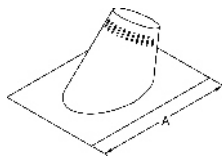
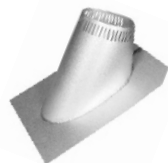


All Roof Flashings are constructed of corrosion resistant galvalume steel.

- Used where the chimney passes through a roof with a pitch of Flat to 6/12.
- Comes complete with Storm Collar.

Size	Dimensions		Product Code	Pack
	A			
5"	24" x 24"		JSC5AAF	1
5"	24" x 24"		JSC5AAF-3	3
6"	24" x 24"		JSC6AAF	1
6"	24" x 24"		JSC6AAF-3	3
7"	24" x 24"		JSC7AAF	1
7"	24" x 24"		JSC7AAF-3	3
8"	27-1/2" x 27-1/2"		JSC8AAF	1
8"	27-1/2" x 27-1/2"		JSC8AAF-3	3

ADJUSTABLE FLASHING - 6/12 to 12/12

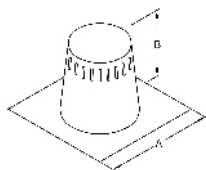


All Roof Flashings are constructed of corrosion resistant galvalume steel.

- Used where the chimney passes through a roof with a pitch of 6/12 to 12/12
- Comes complete with Storm Collar.

Size	Dimensions		Product Code	Pack
	A			
5"	30" x 21-1/2"		JSC5AF2	1
5"	30" x 21-1/2"		JSC5AF2-3	3
6"	30" x 21-1/2"		JSC6AF2	1
6"	30" x 21-1/2"		JSC6AF2-3	3
7"	30" x 21-1/2"		JSC7AF2	1
7"	30" x 21-1/2"		JSC7AF2-3	3
8"	30" x 21-1/2"		JSC8AF2	1
8"	30" x 21-1/2"		JSC8AF2-3	3

TALL CONE FLASHING - FLAT to 1/12

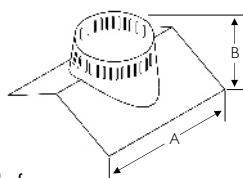
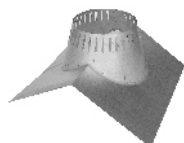


All Roof Flashings are constructed of corrosion resistant galvalume steel.

- Used on flat roof surfaces.
- Comes complete with Storm Collar.

Size	Dimensions		Product Code	Pack
	A	B		
5"	24"	12"	JSC5ATC	1
6"	24"	12"	JSC6ATC	1
7"	24"	12"	JSC7ATC	1
8"	24"	12"	JSC8ATC	1

PEAK FLASHING - 3/12 to 6/12



All Roof Flashings are constructed of corrosion resistant galvalume steel.

- Available in 7" only.
- Required where the chimney passes through a peaked roof with a pitch of 3/12 to 6/12.
- Comes complete with Storm Collar.

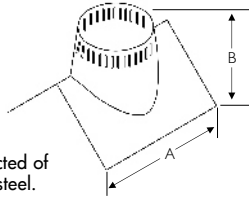
Size	Dimensions		Product Code	Pack
	A	B		
7"	22"	10"	JSC7P1	1

Flashings and Storm Collars continued

PEAK FLASHING - 7/12 to 9/12



All Roof Flashings are constructed of corrosion resistant galvalume steel.



- Available in 7" only.
- Required where the chimney passes through a peaked roof with a pitch of 7/12 to 9/12.
- Comes complete with Storm Collar.

Size	Dimensions		Product Code	Pack
	A	B		
7"	20"	14"	JSC7P2	1

RUBBER BOOT FLASHING KIT

THIS KIT INCLUDES:

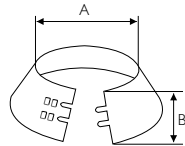
- Special Storm Collar
- Rubber Boot
- Spacer Kit
- Special Boot Mounting Screws



- This kit fits 5", 6", 7" and 8" Chimneys
- Required where the chimney passes through a corrugated roof.
- Rubber Boot Flashing fits roof pitches up to 12/12" (10/12 for 8").

Size	Product Code	Pack
ALL	JURBFK1	1

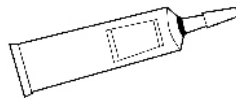
STORM COLLAR



- Used in conjunction with Roof Flashing to keep precipitation out.

Size	Dimensions		Product Code	Pack
	A	B		
5"	7"	5-1/2"	JSC56SC-1	1
6"	8"	5-1/2"	JSC56SC-1	1
7"	9"	5-1/2"	JSC78SC-1	1
8"	10"	5-1/2"	JSC78SC-1	1

SILICONE SEALANT FOR STORM COLLAR

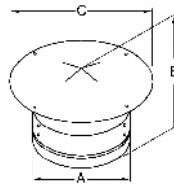


- Used to seal Storm Collar to chimney length above cone of flashing.
- 3 ounce tube.

Size	Dimensions	Product Code	Pack
		JRTV	1

Rain Caps

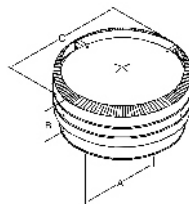
STANDARD RAIN CAP



- Designed to allow free flow of air and used in conjunction with Spark Arrestor (sold Separately) to prevent access to flue by foreign objects.

Size	Dimensions			Product Code	Pack
	A	B	C		
5"	9"	19"	13"	JSC5RC	1
6"	10"	19"	14"	JSC6RC	1
7"	11"	19"	15"	JSC7RC	1
8"	12"	19"	16"	JSC8RC	1

DELUXE RAIN CAP

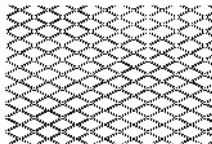


- Advanced design.
- Provides protection against precipitation and creates a venturi effect to enhance draught.
- Twist-lock connection for secure installation.

Size	Dimensions			Product Code	Pack
	A	B	C		
5"	7"	7-1/8"	11-1/4"	JSC5DRC	1
6"	8"	7-1/2"	11-1/4"	JSC6DRC	1
7"	9"	7-1/2"	13-1/4"	JSC7DRC	1
8"	10"	7-5/8"	14-1/4"	JSC8DRC	1

Rain Caps continued

SPARK ARRESTOR

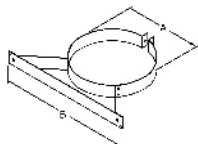


- Stainless steel mesh wire fits our Rain Caps (JSC*RC)

Size	Dimensions	Product Code	Pack
5"	4-1/2" x 26"	JSC5SPAR	10
6"	4-1/2" x 26"	JSC6SPAR	10
7"	4-1/2" x 29"	JSC7SPAR	10
8"	4-1/2" x 32"	JSC8SPAR	10

Parts and Accessories

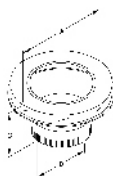
WALL BAND



- Provides lateral support for the chimney when installed adjacent to a wall.
- Maintains the mandatory two inch clearance to combustibles.
- Install on 1st length above the Tee, then every 8 feet thereafter.

Size	Dimensions		Product Code	Pack
	A	B		
5"	7"	17"	JSC5WB	5
6"	8"	17"	JSC6WB	5
7"	9"	17"	JSC7WB	5
8"	10"	17"	JSC8WB	5

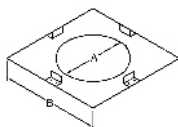
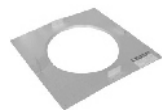
STOVE PIPE ADAPTER



- For use with free-standing wood stoves for quick and easy transition from black stove pipe or Double Wall black stove pipe to factory-built chimney.
- Twist-lock for easy connection to the chimney.
- Stainless steel.

Size	Dimensions			Product Code	Pack
	A	B	C		
5"	7"	5"	7"	JSC5ASE	1
6"	8"	6"	7"	JSC6ASE	1
7"	9"	7"	7"	JSC7ASE	1
8"	10"	8"	7"	JSC8ASE	1

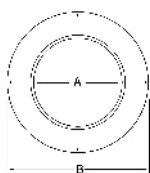
FINISHING PLATE



- Used where the chimney passes through a soffit to provide a finished appearance.
- Maintains the mandatory two inch clearance to combustibles.

Size	Dimensions		Product Code	Pack
	A	B		
5"	7-1/8"	13"	JSC5FP	1
6"	8-1/8"	14"	JSC6FP	1
7"	9-1/8"	15"	JSC7FP	1
8"	10-1/8"	16"	JSC8FP	1

BLACK TRIM COLLAR

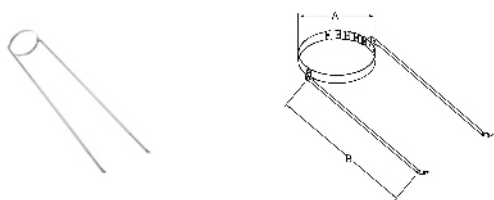


- Used on wall support installations when passing through a non-combustible wall.
- Matte black finish.

Size	Dimensions		Product Code	Pack
	A	B		
5"	7"	16"	J5TC	10
6"	8"	16"	J6TC	10
7"	9"	16"	J7TC	10
8"	10"	16"	J8TC	10

Parts and Accessories continued

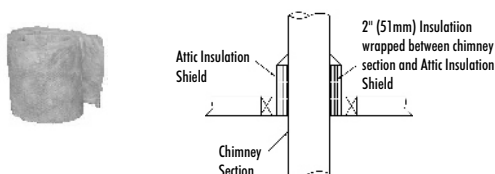
UNIVERSAL ROOF GUY KIT



- Used when 5 feet or more of chimney extends above the roof.
- The kit includes two 5 foot rods and an adjustable band.
- Each rod extends to approximately 10 feet.
- The adjustable band will fit 5", 6", 7" and 8" diameter chimney.

Size	Dimensions		Product Code	Pack
	A	B		
5"	7"-10"	60" 120"	JURGK-1	1
6"	7"-10"	60" 120"	JURGK-1	1
7"	7"-10"	60" 120"	JURGK-1	1
8"	7"-10"	60" 120"	JURGK-1	1

JUSI-UNIVERSAL SHIELDING INSULATION

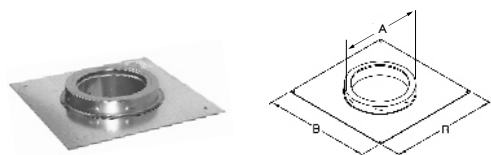


- Insulation for use with:
 - Attic Insulation Shield (JSC*AIS)
 - Wall Thimble (JSC*WT)
 - Cathedral Ceiling Support (JSC*CCS)
- Stops cold air infiltration into the dwelling.
- Provides additional protection against heat from the chimney.

Size	Dimensions	Product Code	Pack
Universal		JUSI	1

Fireplace Parts

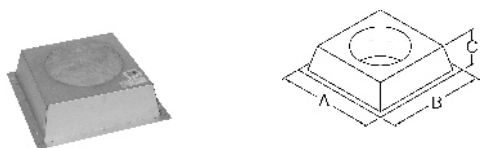
ADAPTOR PLATE



- Used to adapt the chimney to "listed" factory built fireplaces.

Size	Dimensions		Product Code	Pack
	A	B		
5"	7"	11-5/8"	JSC5AP	1
6"	8"	11-5/8"	JSC6AP	1
7"	9"	11-5/8"	JSC7AP	1
8"	10"	11-5/8"	JSC8AP	1

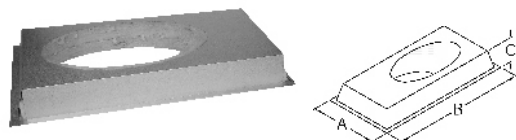
INSULATED CHASE PLUG



- Recommended to reduce air infiltration through the chase in cold climates.
- Maintains the thermal envelope of your home.

Size	Dimensions			Product Code	Pack
	A	B	C		
7"	15"	15"	4-1/4"	JSC7CP	1

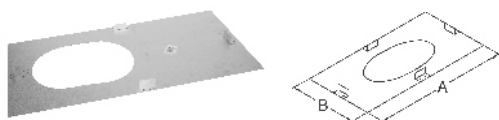
INSULATED 30° OFFSET WALL PLUG



- For use where the chimney passes through a wall at a 30° angle.
- Maintains the thermal envelope of your home.

Size	Dimensions			Product Code	Pack
	A	B	C		
7"	16-1/4"	34"	4-1/4"	JSC7WC	1

45° FACE PLATE



- For use where the chimney passes through a wall at a 45° angle.

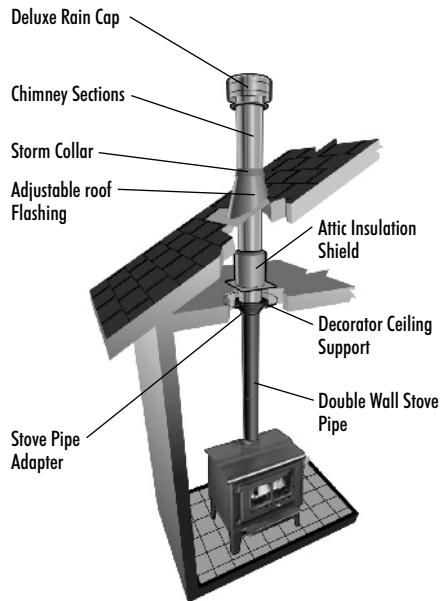
Size	Dimensions		Product Code	Pack
	A	B		
7"	31"	15"	JSC7WFP4	1

Typical Installations

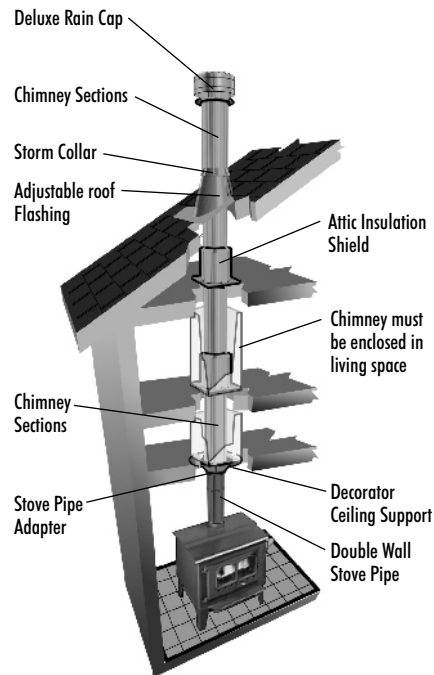
DECORATOR CEILING SUPPORT INSTALLATIONS



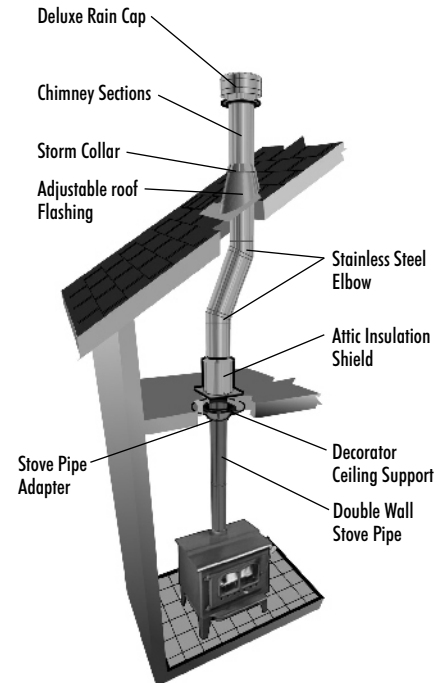
One Storey



Two Storey

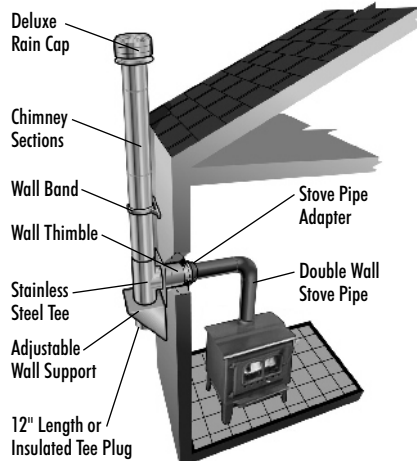


Elbow Installation

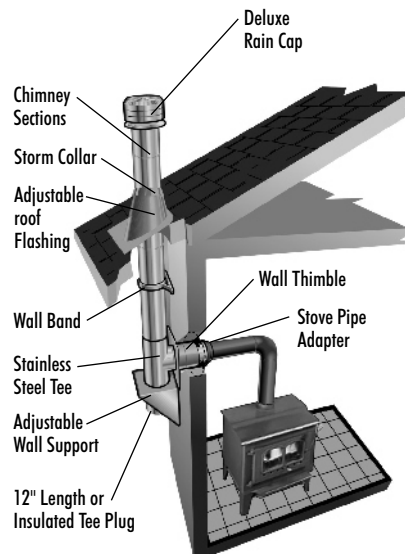


WALL SUPPORT INSTALLATIONS

One Storey

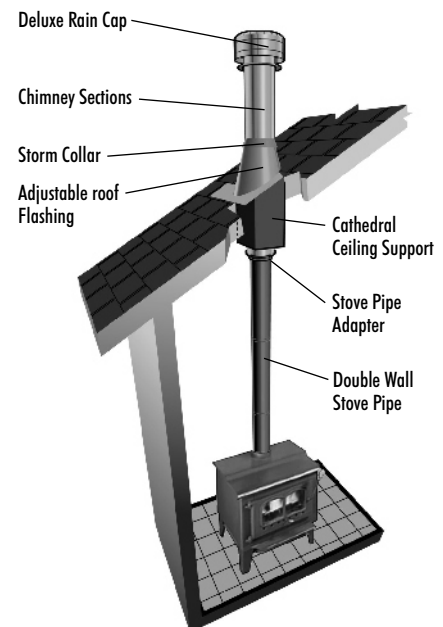


Through a soffit



CATHEDRAL SUPPORT INSTALLATION

With Cathedral Ceiling Support Box



For Wood Fireplace Installations, consult the Installation Instructions supplied with each Fireplace unit. Installations may vary, please consult the Installation Instructions available at www.supervent.com

JSC001-E R&B 3785 11/08



SELKIRK CANADA CORPORATION

375 GREEN ROAD, STONEY CREEK, ON L8E 4A5 • TEL: 1-888-SELKIRK (735-5475) • FAX: 1-866-835-9624

web: www.supervent.com

email: info@selkirkcanada.com