

MAIL BOSS™

LOCKING SECURITY MAILBOXES

EPOCH DESIGN

U.S. POSTMASTER APPROVED

retail



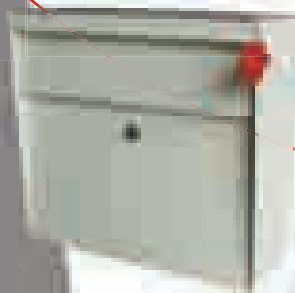
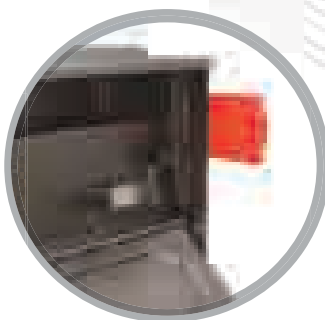
value

quality

secure

patented

profits



MAIL BOSS
NEW YORK, NY
ONE... 052
25-7... FAX: 425-284-0885

EPOCH DESIGN, LLC

Mail Boss™ by Epoch Design, LLC offers premium locking security mailboxes of superior quality and value. The Mail Boss™ locking security mailbox product line secures sensitive mail, helping consumers protect themselves from the epidemic of mail theft and identity theft.

Company History

For over ten years, Epoch Design, LLC has produced solid wood and metal furniture, creating an extensive line of high-quality adult and children's bedroom collections. When Epoch Design President David Bolles had his mail stolen two times in as many months in 2005, he set out to purchase a locking mailbox to protect his family and company from mail and identity theft. Unfortunately (or fortunately as fate would have it) Bolles was unable to find an affordable high-quality locking mailbox with true security at any of the local hardware stores or online stores he visited. He realized there was a need for a truly secure mailbox product, and with the resources of his company, set out to design the Mail Boss™.

In 2006, Epoch Design launched the introduction of the Mail Boss™ line of locking mailboxes to offer a truly secure and affordable solution to mail and identity theft prevention. With the patented installation-friendly Fast-Trak™ feature, welded commercial-grade galvanized steel construction, and its patented security lock design features, the Mail Boss™ quickly won over consumers looking to prevent mail and identity theft from ruining their good names. The Mail Boss™ is now available in retail hardware stores across the nation.

Style

Our unique patented designs can be found gracing some of the country's finest homes, and have been featured nationally in televised home makeover shows, publications such as Popular Mechanics and Hardware Retailing, and many newspapers including The Seattle Times, The San Francisco Chronicle and more. Choose from a wide variety of styles, colors, finishes and mounting options to perfectly complement your home or business.

Quality

All of the Mail Boss™ mailboxes and accessories are constructed of heavy gauge electro-galvanized steel and feature heavy-duty stainless steel hinges and patented anti-pry cam lock mechanisms for years of trouble-free operation. All products are individually powder coated for extra durability and rust resistance. All products come with the hardware necessary making installation quick and easy.

Security

Epoch Design exceeds USPS standards for security and durability. Mail Boss™ mailboxes feature a patented anti-pry locking mechanism and a superior commercial grade tube lock render the Mail Boss™ mailboxes the ultimate in mail identity theft prevention.

Warranty

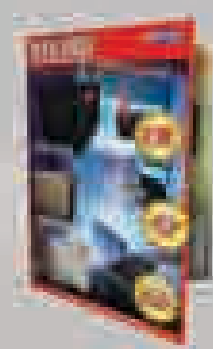
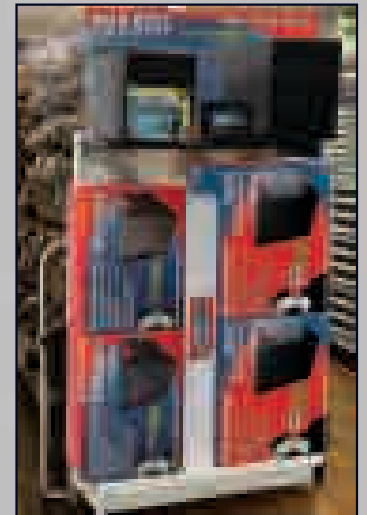
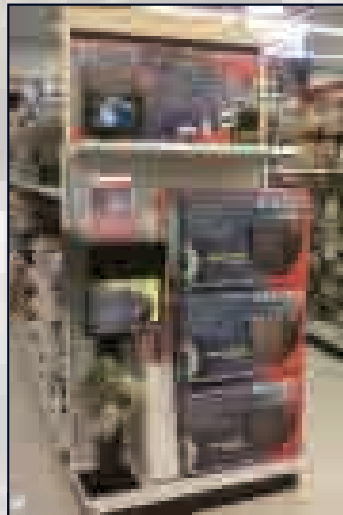
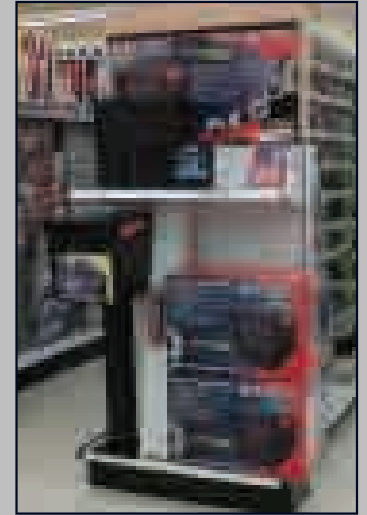
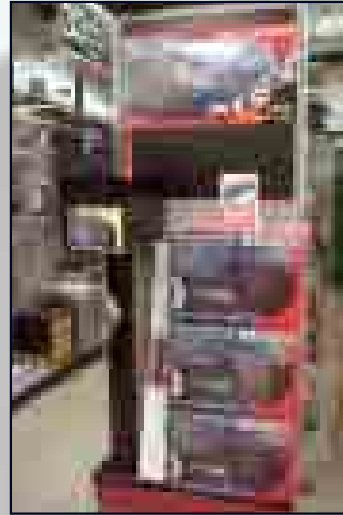
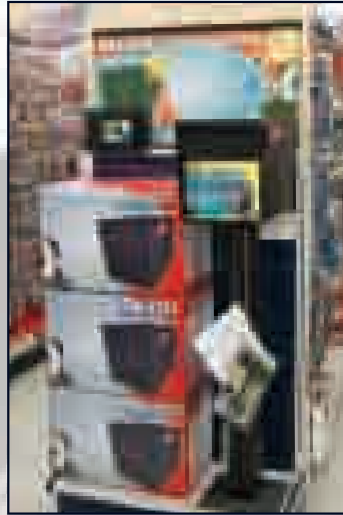
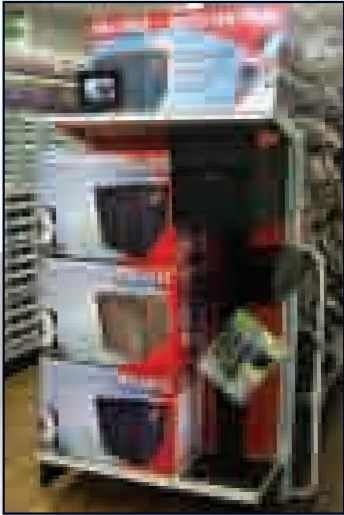
Epoch Design stands by the quality of our designs with a Limited Lifetime Warranty on all Mail Boss™ products. With over a decade in manufacturing experience, strict quality controls and superior materials ensure that every Epoch Design Mail Boss™ product is quality-built to the highest standards in the industry. When you choose an Epoch Design product you are getting the ultimate in innovation, security and long-lasting design.

Distinctive style and unsurpassed quality have made Mail Boss™ mailboxes by Epoch Design a leader setting the standards for manufacturing of premium security locking mailboxes.

For more information about any of our products, visit us at www.mailboss.net <<http://www.mailboss.net>> .



POP MERCHANDISING



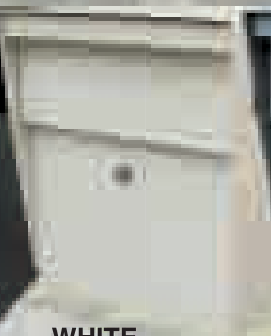
DISPLAY • PACKAGING • BROCHURE • END CAP BANNERS • VIDEO PLAYER



MAIL BOSS™



BLACK
MODEL 7106



WHITE
MODEL 7107



GRANITE
MODEL 7105



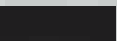
BRONZE
MODEL 7108



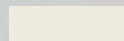
GALAXY
MODEL 7103



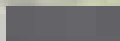
BLACK



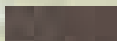
WHITE



GRANITE



BRONZE



GALAXY



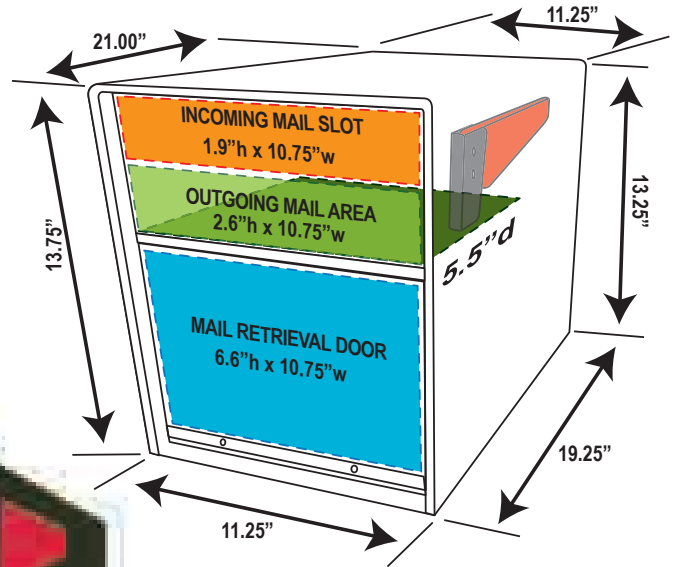
0123456789
0123456789
0123456789

MAIL BOSS™

RECEIVES SMALL PACKAGES

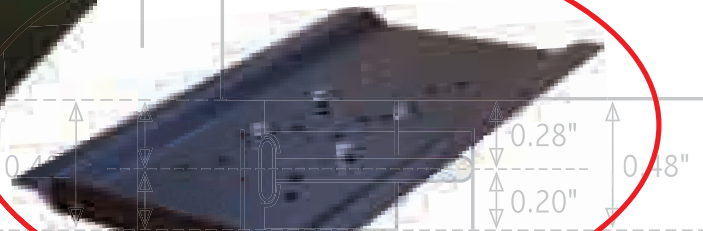


NEODYMIUM MAGNETS



12-GAUGE & 14-GAUGE
ELECTRO-GALVANIZED
POWDER COATED
STEEL CONSTRUCTION

7-PIN TUBE LOCK

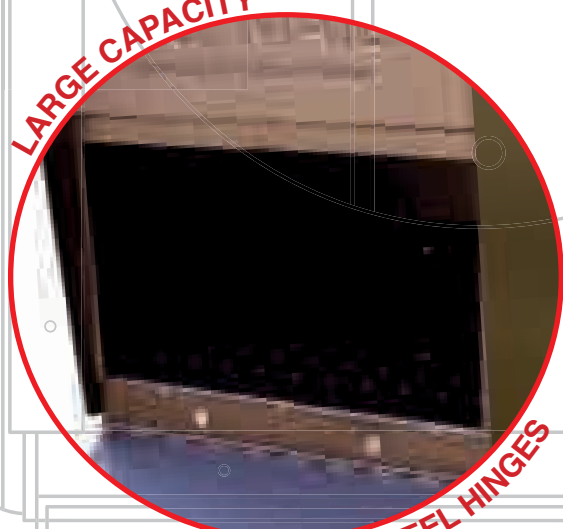


FAST-TRAK™ FOR QUICK INSTALLATION

PATENTED ANTI-PRY LOCKING SYSTEM

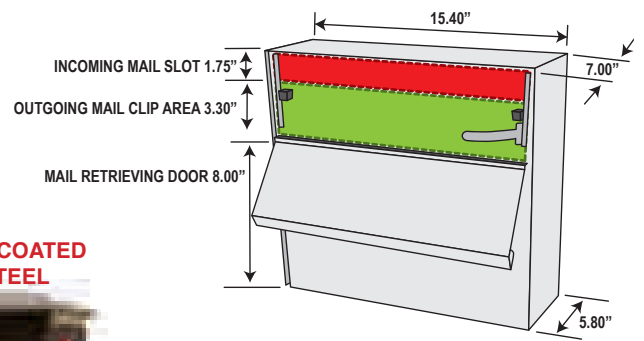


LARGE CAPACITY

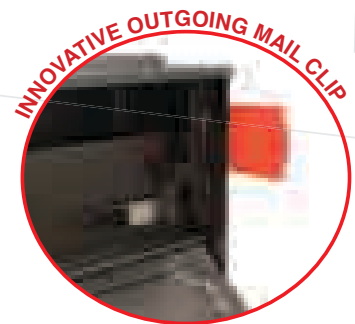


STAINLESS STEEL HINGES

MAIL BOSS™ WALL MOUNT



14 & 16 GAUGE POWDER COATED
ELECTRO-GALVANIZED STEEL



TOWNHOUSE



BLACK
MODEL 7172

WHITE
MODEL 7173

GRANITE
MODEL 7171

BRONZE
MODEL 7174

GALAXY
MODEL 7175



METRO



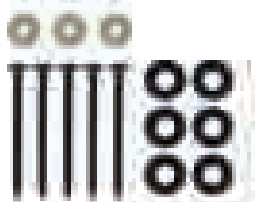
BLACK
MODEL 7162

WHITE
MODEL 7163

GRANITE
MODEL 7161

BRONZE
MODEL 7164

GALAXY
MODEL 7160



0123456789
0123456789
0123456789

BLACK



WHITE



GRANITE



BRONZE



GALAXY



MAIL BOSS™ ACCESSORIES

4 BOX SPREADER BAR

DIM: 49" x 5" x 2"

COLOR	MODEL
BLACK	7134
GRANITE	7135
WHITE	7136
BRONZE	7137
GALAXY	7138

NEWSPAPER HOLDER

DIM (Box Only): 17 1/2" D x 6" W x 6" H

COLOR	MODEL
BLACK	7111
GRANITE	7112
WHITE	7113
BRONZE	7114
GALAXY*	7115

* AVAILABLE SOON

IN GROUND POST

DIM: 4" x 4" x 43"

COLOR	MODEL
GRANITE	7120
BLACK	7121
WHITE	7122
BRONZE	7123
GALAXY	7125

3 BOX SPREADER BAR

DIM: 34" x 5" x 2"

COLOR	MODEL
BLACK	7140
GRANITE	7141
WHITE	7142
BRONZE	7143
GALAXY	7149

SURFACE MOUNT POST PKG.






DIM (Post Only): 4" x 4" x 27 1/2"

COLOR	MODEL
GRANITE	7006
BLACK	7007
WHITE	7008
BRONZE	7009
GALAXY	7005

2 BOX SPREADER BAR

DIM: 20" x 5" x 2"

COLOR	MODEL
BLACK	7144
GRANITE	7145
WHITE	7146
BRONZE	7147
GALAXY	7148

BLACK	
WHITE	
GRANITE	
BRONZE	
GALAXY	

MAIL BOSS

EPOCH DESIGN

17617 NE 65TH ST SUITE 2

REDMOND, WA 98052

MAIL BOSS™ by EPOCH DESIGN, LLC Tel: (800) 589-7990 Fax: (425) 284-0885 www.MailBoss.net

TEL: 425-284-0885 FAX: 425-284-0885

www.MailBoss.net



NATIONAL RECOGNITION

