



Drain Basins, Channels and Grates



The Most **Advanced** Name in Drainage Systems®



Solutions for Home, Landscape and Sports Field Drainage Problems*

Homeowners who suffer the inconvenience and unpleasantness of flooded basements, wet yards or malfunctioning septic systems now have an economical solution for surface water removal by using DrainTech® basins, channel drains and grates from Advanced Drainage Systems.

Manufactured using rigid, lightweight 100% recycled polyolefins helps in qualifying projects for LEED® certification credits. The LEED (Leadership in Energy and Environment Design) Green Building Rating System, developed by the U.S. Green Building Council (USGBC), is a nationally-accepted benchmark for the design, construction and operation of high-performance green buildings. ADS is proud to be a member of USGBC.



Square, Round and Brass Grates

Downspout Adapters
Flexibility allows for easy bends and turns

Emitters
Controlled flow of water

Atrium & Dome Grates
Ideal to drain window sills and planter areas where flat grates may slip due to leaves & mulch

Round Drain Basins
Designed for rapid rain water collection in landscape areas

Square Drain Basins
Includes regular and off-set pipe adapters for installation flexibility in landscape areas

Rectangular and Round Valve Boxes
Offers years of service under demanding outdoor conditions

Single Wall Pipe
Flexibility allows for easy bends and turns

AdvanEDGE® Pipe
Drainage for building foundations, retaining walls and synthetic turf

Styrene & PVC Fittings
Connects PVC and HDPE Triple wall drain pipes

Triple Wall Pipe
High-beam strength keeps its line and grade and HDPE is more impact resistant than PVC or ABS

Single Wall Fittings
A complete line of fittings makes installations fast and easy

Channel Drains & Grates
For driveways, garages and patios to remove sheet water flows from large flat surface areas

DrainTech by **ADS**

Easy solutions to solve your drainage problems at www.ads-pipe.com

DrainTech basins and channels are easy to install, long-lasting and require little maintenance. For shallow applications, DrainTech low-profile drains are recommended.

DrainTech structures include a wide range of grates available in four colors for use in turf, landscaping and hard-surface areas. Most grates have a non-skid surface and are compliant with the Americans with Disabilities Act (see items marked "ADA Compliant").

Through the use of universal adapters, DrainTech structures can easily connect to the most common types of pipe used in landscaping and turf applications, including corrugated and smooth wall polyethylene pipe and schedule 40 PVC pipe. The basins are also interchangeable with many competing grates.

The DrainTech line of structures also includes valve boxes with risers for use in landscape irrigation systems.

For a complete drainage system, ADS also provides singlewall corrugated polyethylene pipe and TripleWall pipe for downspout and roof-to-curb connections. A complete line of fittings, including tees, wyes and elbows are also available.

DrainTech basins, channels and grates are instrumental in solving the problems created by surface runoff and poorly drained soils. A properly designed system can improve property, create a more enjoyable landscape and protect investments for years to come.

*For commercial/heavy duty applications use Nyloplast® Engineered Drainage Structures or Duraslot® Surface Drains from ADS.

Index

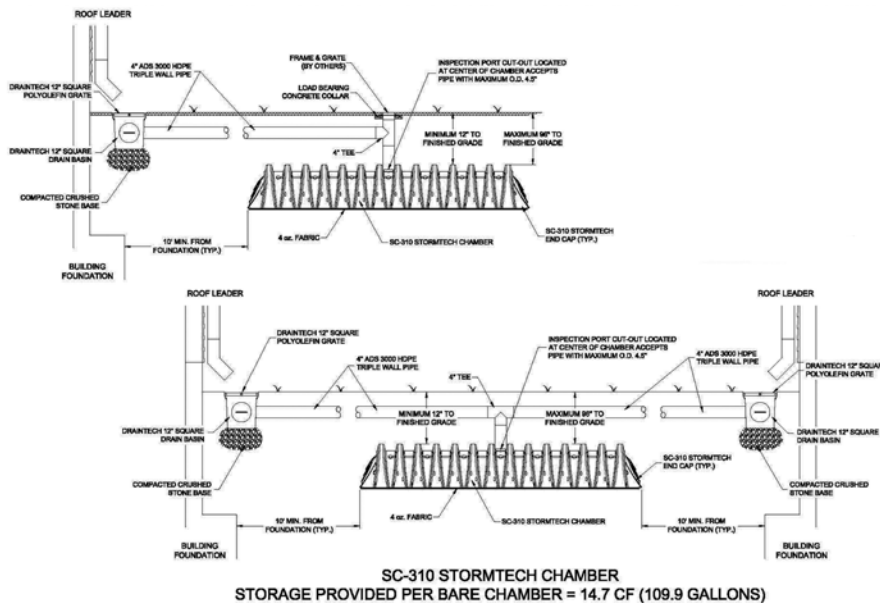
Explanation of Part Numbers	1
Rain Water Harvesting - Residential	2
Drain Basins, Grates & Filters	4
Low Profile Drains	10
Pipe Adapters and End Caps	11
Drop-In Grates	13
Emitters	15
Professional Series	
PRO+ Grates	17
Nyloplast Drop-In Grates	18
Brass and Chrome Grates	18
PRO+ Series Channels	19
PRO+ Series Valve Boxes	22
Commercial Series	
PVC Channel	25
Commercial Grade Valve Boxes	31
Reference Materials	
Flow Charts	34
Channel Installation Guides	35
Load Classification Chart	35
DrainTech Marketing Materials	36

Explanation of Part Numbers

Example: 0333SDB, 3" Atrium Grate, Black

03	3	3	SD	B
/				/
First two numbers show part size	Third number shows size of pipe the part fits	Fourth number shows style 0 = round grate 2 = square grate 3 = atrium grate	SD is the product category SD = small drain CH = channels VB = valve box	Final letter shows color B = black G = green S = sand Y = gray

Applications: Use DrainTech drain basins with StormTech SC-310 chamber for maximum infiltration into the subsoil. The two-part construction allows for easy assembly and installation. Installing your leaching chamber system with DrainTech basins makes this system ideal for discharging water from low spots, down spouts or rain gutters into the subsoil.



StormTech SC-310 Roof Leader Storm Water Leaching Chamber System should be installed a minimum of 10 feet from structure or foundation.

Maximize Debris Removal: Installing a 9" or 12" DrainTech basin using 9" or 12" DrainTech grates under each roof leader outlet will allow for pre-screening of debris. Inverted atrium grates (0903SDB or 1203SDB) will allow for further debris collection before water enters the StormTech SC-310 Roof Leader Storm Water Chamber System. Filter baskets are available.

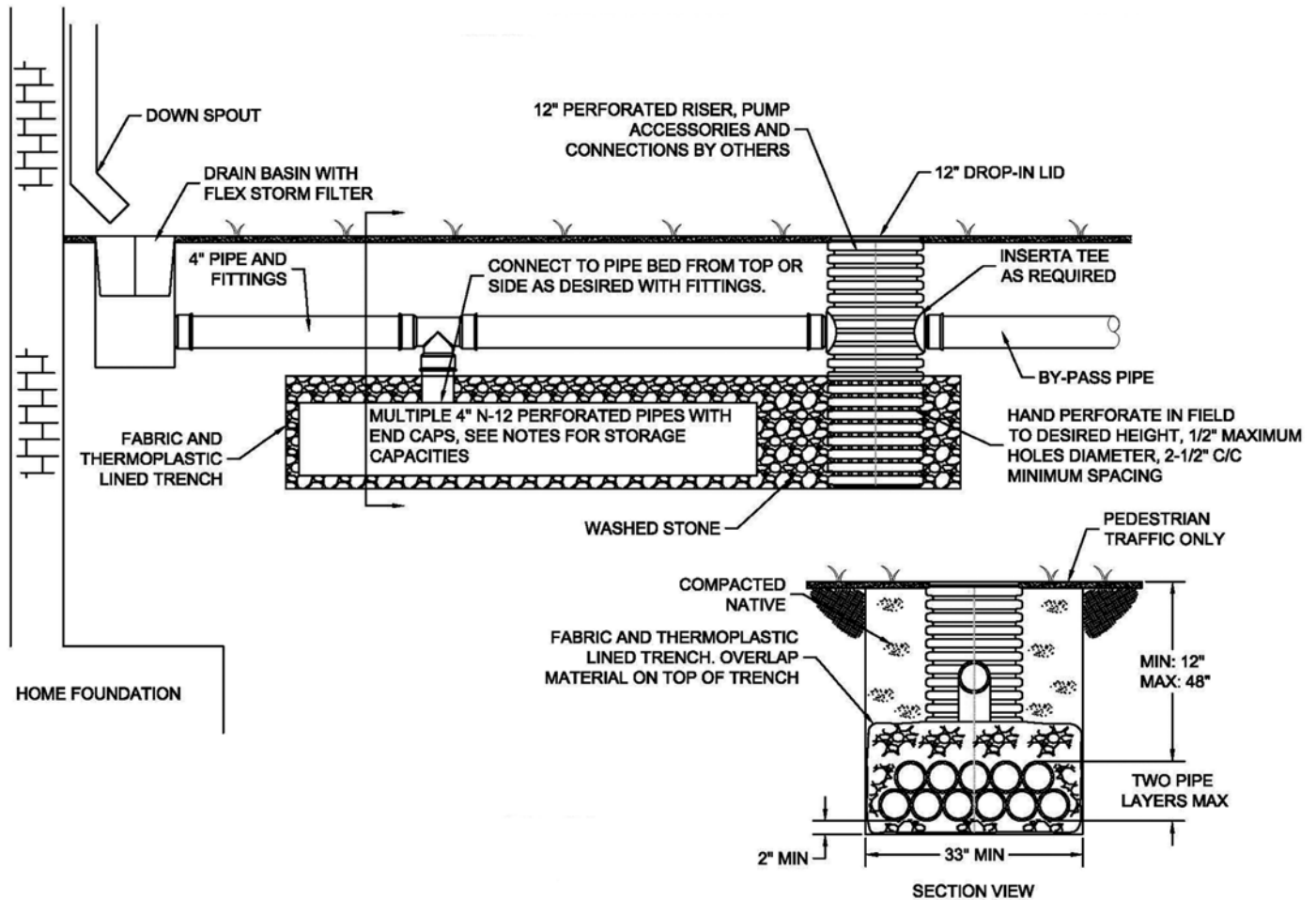
Maximum Storage: Installation of a StormTech SC-310 Roof Leader Storm Water Chamber System arch design allows for maximum storage during peak rainfalls. Reference StormTech's Residential Downspout sheet (www.stormtech.com) for system sizing information. The SC-310 can be cut to accommodate site constraints. Each SC-310 StormTech chamber holds 110 gallons.

Maximum Leaching: StormTech SC-310 Roof Leader Storm Water Chamber System allows for shallow installations to maximize greater permeability of soils closer to the surface, whereby, maximizing the leaching effort of the system. Leaching occurs on the sidewalls and throughout the entire bottom surface.

Maximum Load Carrying: Please reference StormTech's Residential Downspout sheet for minimum and maximum cover requirements of the StormTech chambers in residential applications. The chamber system only requires two parts: the chamber and the universal end caps. Pipes can be readily inserted into the end caps.

Ideal for removal of excess water from low spot or unwanted ponding areas: (Step 1): Simply dig a trench approximately 28" deep by 34" wide by 90.7" long. (Step 2) Install stone or fabric for scour protection at inlet location(s). (Step 3) Install your SC-310 chamber on top of the scour protection. (Step 4) Place end caps and backfill with native soil. If preferred you can top dress the surface with sod. Multiple chambers can be installed if more storage volume is needed.

Applications: Residential rainwater harvesting and re-use with 4 in N-12® perforated pipe.



DRAWING NOTES:

1. Pipe system consists of commercially available 4" N-12 perforated pipe stacked in no more than two layers high and six rows wide as shown.
2. Storage capacity of single 4" pipe is 0.65 gallons per foot of pipe. Storage capacity for 11 pipe cluster shown is 7.2 gallons per foot. Contractor is responsible for determining required amount of pipe needed for the storage volume of each project.
3. Multiple beds of pipe can be constructed keeping a minimum of 12" of separation between beds.
4. Minimum cover under concrete patios may be reduced to 6".

Applications: Use to collect low-volume water flow from wet areas in yards, lawns, fairways and sports fields. Can also be used in patios, garages and driveways.

6" Round 1 & 2 Hole Basin

Use with: 3", 4" corrugated singlewall pipe; 3", 4" Triple-Wall pipe; 3", 4" PVC pipe; singlewall HDPE fittings. Use 6" pipe for a riser and 6" SDR35 for extensions.



Product #	Description	UPC Code	Dimensions (inches)			Package Quantity
			L	D	H	
0606SD1	One-hole basin	096942705585	9.2	6.7	7.8	5
0606SD2	Two-hole basin	096942705592	11.6	6.7	7.8	5

6" Round 2-Hole Basin Kit

A complete package: 6" round two-hole basin plus 6" round plastic grate and one solid end cap.



Product #	Description	UPC Code	Dimensions (inches)			Package Quantity
			L	D	H	
0606SD2KB	Basin Kit, Black Grate	096942717465	11.6	6.7	7.8	1
0606SD2KG	Basin Kit, Green Grate	096942705608	11.6	6.7	7.8	1

6" Round Drop-In Grate

Use with: 6" round basin, 6" corrugated singlewall pipe or 6" PVC pipe.

ADA Compliant



Product #	Description	UPC Code	Dimensions (inches)		Package Quantity
			D	H	
0660SDB	Black Grate	096942705745	6.7	1.8	10
0660SDG	Green Grate	096942705752	6.7	1.8	10
0660SDS	Sand Grate	096942709804	6.7	1.8	10
0601DI	Ductile Iron Grate	096942711432	6.7	1.8	1
0661SDSBR	Satin Brass Grate	096942642194	5.9	1.3	1

6" Atrium Drop-In Grate

Use with: 6" round basin, 6" corrugated singlewall pipe or 6" PVC pipe where debris would clog a flat grate.



Product #	Description	UPC Code	Dimensions (inches)		Package Quantity
			D	H	
0663SDB	Black Atrium Grate	096942705783	6.7	5.6	10
0663SDG	Green Atrium Grate	096942705790	6.7	5.6	10
0663SDS	Sand Atrium Grate	096942709859	6.7	5.6	10

6" Square Drop-In Grate

Use with: 6" round basin, 6" corrugated singlewall pipe or 6" PVC pipe.

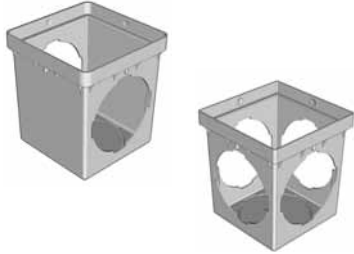
ADA Compliant



Product #	Description	UPC Code	Dimensions (inches)			Package Quantity
			L	D	H	
0762SDB	Black Grate	096942705875	6.9	6.9	2.4	10
0762SDG	Green Grate	096942705882	6.9	6.9	2.4	10
0762SDS	Sand Grate	096942709828	6.9	6.9	2.4	10
0862SDB	Black Grate	096942706001	7.8	7.8	2.4	10
0862SDG	Green Grate	096942706018	7.8	7.8	2.4	10
0862SDS	Sand Grate	096942709835	7.8	7.8	2.4	10
0962SDB	Black Grate	096942706230	8.9	8.9	2.5	10
0962SDG	Green Grate	096942706247	8.9	8.9	2.5	10
0962SDS	Sand Grate	096942709842	8.9	8.9	2.5	10

Applications: Use to collect medium-volume water flow from wet areas in yards, lawns, fairways and sports fields. Can also be used in patios, garages and driveways.

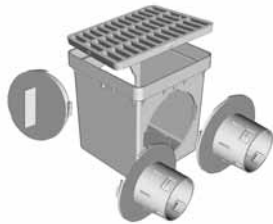
9" Square 2 & 4 Hole Basin



Use with: 3", 4", 6" corrugated singlewall pipe; 3", 4" TripleWall pipe; 3", 4", 6" PVC pipe; singlewall HDPE fittings; DrainTech 9" square riser; DrainTech Universal End Plug and DrainTech pipe adapters.

Product #	Description	UPC Code	Dimensions (inches)			Package Quantity
			L	D	H	
0909SD2	Two-hole basin	096942706148	9.4	9.4	10.1	4
0909SD4	Four-hole basin	096942706162	9.4	9.4	10.1	4

9" Square 2-Hole Basin Kit



A complete package: Kit contains one 9-inch square 2-hole basin, one 9" square grate, one Universal End Plug and two adapters to connect 3" or 4" drainage pipe to the basin.

Product #	Description	UPC Code	Dimensions (inches)			Package Quantity
			L	D	H	
0909SD2KB	Kit with black grate	096942717526	9.4	9.4	10.1	1
0909SD2KGG	Kit with green grate	096942717533	9.4	9.4	10.1	1

9" Square Riser



Uses: Adds 6" of height to 9" square 2- or 4-hole basin.

Product #	Description	UPC Code	Dimensions (inches)			Package Quantity
			L	D	H	
0906SD	9" Square Riser	096942706124	9.4	9.4	7.1	4

9" Square Grate

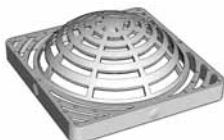
ADA Compliant



Use with: 9" square basin or 9" low profile drain.

Product #	Description	UPC Code	Dimensions (inches)			Package Quantity
			L	D	H	
0902SDB	Black Grate	096942706063	9.0	9.0	1.1	8
0902SDG	Green Grate	096942706070	9.0	9.0	1.1	8
0902SDS	Sand Grate	096942709866	9.0	9.0	1.1	8
0902SDSG	Steel Grate	096942711951	9.0	9.0	1.1	1
0902SDDI	Ductile Iron Grate	096942717618	9.0	9.0	1.1	1
0902SBR	Satin Brass Grate		9.0	9.0	1.1	1

9" Atrium Grate

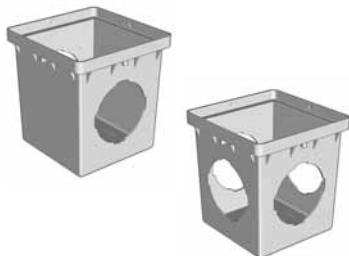


Use with: 9" square basin or 9" low-profile drain where debris would clog a flat drain.

Product #	Description	UPC Code	Dimensions (inches)			Package Quantity
			L	D	H	
0903SDB	Black Grate	096942706100	9.0	9.0	3.5	8
0903SDG	Green Grate	096942706117	9.0	9.0	3.5	8
0903SDS	Sand Grate	096942709873	9.0	9.0	3.5	8

Applications: Use to collect medium- to high-volume water flow from wet areas in yards, lawns, fairways and sports fields. Can also be used in patios, garages and driveways.

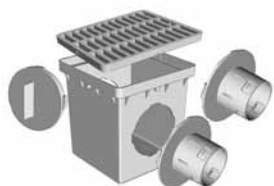
12" Square 2 & 4 Hole Basin



Use with: 3", 4", 6", 8" corrugated singlewall pipe; 3", 4" TripleWall pipe; 3", 4", 6", 8" PVC pipe; singlewall HDPE fittings; DrainTech 12" square riser; DrainTech Universal End Plug and DrainTech offset adapters. An 8" opening is available upon request.

Product #	Description	UPC Code	Dimensions (inches)			Package Quantity
			L	D	H	
1212SD2	Two-hole basin	096942706520	12.1	12.1	12.8	4
1212SD4	Four-hole basin	096942706551	12.1	12.1	12.8	4

12" Square 2-Hole Basin Kit



A complete package: Kit contains one 12-inch square 2-hole basin, one 12" square grate, one Universal End Plug and two offset adapters to connect 3" or 4" drainage pipe to the basin.

Product #	Description	UPC Code	Dimensions (inches)			Package Quantity
			L	D	H	
1212SD2KB	Kit with black grate	096942717540	12.1	12.1	12.8	1
1212SD2KG	Kit with green grate	096942717557	12.1	12.1	12.8	1

12" Square Riser



Uses: Adds 6" of height to 12" square 2- or 4-hole basin.

Product #	Description	UPC Code	Dimensions (inches)			Package Quantity
			L	D	H	
1206SD	12" square riser	096942706452	12.1	12.1	7.1	4

12" Square Grate

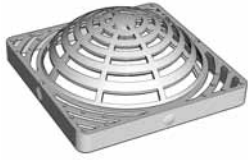
Use with: 12" square basin or 12" low profile drain.

ADA Compliant



Product #	Description	UPC Code	Dimensions (inches)			Package Quantity
			L	D	H	
1202SDB	Black Grate	096942706391	11.8	11.8	1.1	8
1202SDG	Green Grate	096942706407	11.8	11.8	1.1	8
1202SDS	Sand Grate	096942709880	11.8	11.8	1.1	8
1202SDBR	Manganese Grate	096942711517	11.8	11.8	1.1	1
1202SDDI	Ductile Iron Grate	096942717625	11.8	11.8	1.1	1
1202SDSG	Steel Grate	096942711968	11.8	11.8	1.1	1

12" Atrium Grate



Use with: 12" square basin or 12" low-profile drain where debris would clog a flat drain.

Product #	Description	UPC Code	Dimensions (inches)			Package Quantity
			L	D	H	
1203SDB	Black Grate	096942706438	11.8	11.8	4.6	8
1203SDG	Green Grate	096942706445	11.8	11.8	4.6	8
1203SDS	Sand Grate	096942709897	11.8	11.8	4.6	8

12" Basin Filters

Use with:

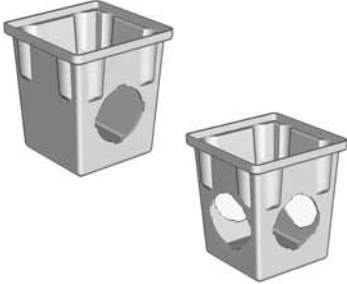


Product #	Description	UPC Code	Dimensions (inches)	Package Quantity
621292SDLF	Leaf/Grass Filter Bag	xxxxxxxxxxxxx	12 x 12	1
621292SDWF	Woven Filter Bag	xxxxxxxxxxxxx	12 x 12	1
621292SDAF	Absorb-it Bag	xxxxxxxxxxxxx	12 x 12	1

Applications: Use to collect high-volume water flow from wet areas in yards, lawns, fairways and sports fields. Can also be used in patios, garages and driveways.

18" Square 2 & 4 Hole Basin

Use with: 3", 4", 6", 8", 10" corrugated singlewall pipe; 3", 4" TripleWall pipe; 3", 4", 6", 8", 10" PVC pipe; singlewall HDPE fittings; DrainTech 18" square riser; DrainTech Universal End Plug; 2 reducing rings included.



Product #	Description	UPC Code	Dimensions (inches)			Package Quantity
			L	D	H	
1818SD2	Two-hole basin	096942706766	20.0	20.0	19.3	1
1818SD4	Four-hole basin	096942706773	20.0	20.0	19.3	1

18" Square Riser

Uses: Adds 6" of height to 18" square 2- or 4-hole basin.

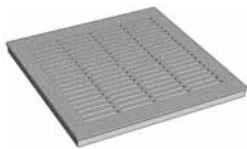


Product #	Description	UPC Code	Dimensions (inches)			Package Quantity
			L	D	H	
1806SD	18" Square Riser	096942706759	17.8	17.8	7.5	1

18" Square Grate

Use with: 18" square basin

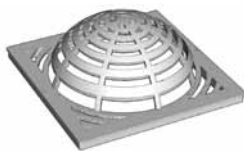
ADA Compliant



Product #	Description	UPC Code	Dimensions (inches)			Package Quantity
			L	D	H	
1802SDB	Black Grate	096942706698	16.9	16.9	2.0	4
1802SDG	Green Grate	096942706740	16.9	16.9	2.0	4
1802SDCG	Ductile Iron Grate	096942717632	16.9	16.9	2.0	1
1802SDSG	Steel Grate	096942711975	16.9	16.9	2.0	1

18" Atrium Grate

Uses: Use where debris would clog a flat drain.



Product #	Description	UPC Code	Dimensions (inches)			Package Quantity
			L	D	H	
1803SDB	Black Grate	096942706735	17.0	17.0	7.0	4
1803SDG	Green Grate	096942706742	17.0	17.0	7.0	4

18" Basin Filters

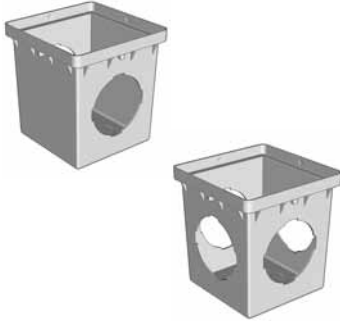
Use with:



Product #	Description	UPC Code	Dimensions (inches)			Package Quantity
			L	D	H	
621892SDLF	Leaf/Grass Filter Bag	xxxxxxxxxxxxx	18 x 18			1
621892SDWF	Woven Filter Bag	xxxxxxxxxxxxx	18 x 18			1
621892SDLF	Absorb-it Bag	xxxxxxxxxxxxx	18 x 18			1

Applications: Use to collect high-volume water flow from wet areas in yards, lawns, fairways and sports fields. Can also be used in patios, garages and driveways.

24" Square 2 & 4 Hole Basin



Use with: 3", 4", 6", 8", 10", 12" corrugated singlewall pipe; 3", 4" TripleWall pipe; 3", 4", 6", 8", 10", 12" PVC pipe; singlewall HDPE fittings; DrainTech 24" square riser; DrainTech Universal End Plug. Must be accompanied by DrainTech Universal Pipe Adapter 2410SD.

Product #	Description	UPC Code	Dimensions (inches)			Package Quantity
			L	D	H	
2424SD2	Two-hole basin	096942711685	25.0	25.0	24.0	1
2424SD4	Four-hole basin	096942711692	25.0	25.0	24.0	1

24" Square Riser



Uses: Adds 12 inches of height to 24" square 2- or 4-hole basin.

Product #	Description	UPC Code	Dimensions (inches)			Package Quantity
			L	D	H	
2406SD	24" square riser	096942711678	25.0	25.0	13.0	1

24" Square Grate

ADA Compliant



Use with: 24" square basin

Product #	Description	UPC Code	Dimensions (inches)			Package Quantity
			L	D	H	
2402SDB	Black Grate	096942711654	24.0	24.0	2.0	1
2402SDG	Green Grate	096942711661	25.0	25.0	2.0	1

24" Adapter

Use with: 24" square basin to adapt to 10" or 12" pipe. 0612SD or 0812SD can be added for use with 6" or 8" pipe. Adapter is used with DrainTech 24" Square 2-Hole (2424SD2) & 4-Hole (2424SD4) Basins.

Product #	Description	UPC Code	Dimensions (inches)			Package Quantity
			L	D	H	
2410SD	10" & 12" Universal Adapter	096942742597	13.0	12.0	8.0	1

Application: Use where height restrictions won't allow the use of a standard basin or with direct pipe connection.

9" Square Low-Profile Drain



Use with: DrainTech 9" square grate or DrainTech 9" atrium grate; singlewall HDPE fittings; DrainTech pipe adapters; 3", 4", 6", 8" corrugated singlewall pipe; 3", 4" TripleWall pipe; 3", 4", 6", 8" PVC pipe.

Product #	Description	UPC Code	Dimensions (inches)			Package Quantity
			L	D	H	
0907SD	Square drain	096942706131	9.5	9.5	2.1	8

12" Square Low-Profile Drain



Use with: DrainTech 12" square grate or DrainTech 12" atrium grate; singlewall HDPE fittings; DrainTech pipe adapters; 3", 4", 6", 8", 10" corrugated singlewall pipe; 3", 4" TripleWall pipe; 3", 4", 6", 8", 10" PVC pipe.

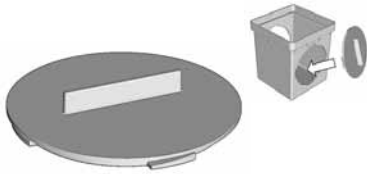
Product #	Description	UPC Code	Dimensions (inches)			Package Quantity
			L	D	H	
1207SD	Square drain	096942706469	11.8	11.8	3.3	8

Installation Options



Universal End Plug

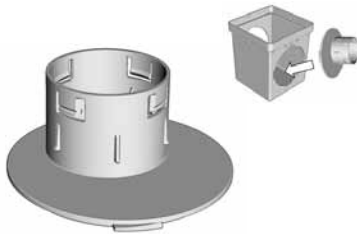
Use: Cap off unused outlets in drain basins.



Product #	Description	UPC Code	Dimensions (inches)		Package Quantity
			D	H	
0633SD	Universal plug	096942705677	7.1	1.0	20

3" & 4" Offset Locking Adapter

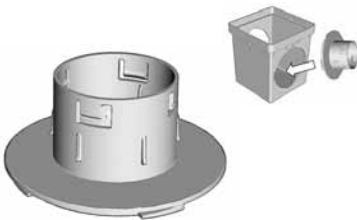
Uses: Use to attach 3", 4" pipe to any size DrainTech drain basin where an offset connection is needed. Works as a locking fitting to 3", 4" corrugated pipe; as a snuggle fitting to 3", 4" PVC or leach pipe.



Product #	Description	UPC Code	Dimensions (inches)		Package Quantity
			D	H	
3411SD	Offset locking adapter	096942707015	7.1	5.0	20

3" & 4" Locking Adapter

Uses: Use to attach 3", 4" pipe to any size DrainTech drain basin where a straight-line connection is needed. Works as a locking fitting to 3", 4" corrugated pipe; as a snuggle fitting to 3", 4" PVC or leach pipe.



Product #	Description	UPC Code	Dimensions (inches)		Package Quantity
			D	H	
3412SD	Locking adapter	096942707022	7.1	5.0	20

6" Locking Adapter

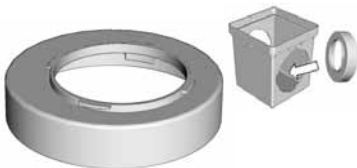
Uses: Use to attach 6" corrugated and PVC pipe to any size DrainTech drain basin where a straight-line connection is needed.



Product #	Description	UPC Code	Dimensions (inches)		Package Quantity
			D	H	
0612SD	Locking adapter	096942705653	7.4	2.0	20

8" Offset Adapter

Uses: Use to attach 8" & 10" singlewall pipe to 9", 12", 18" DrainTech drain basins and/or low-profile drains where an offset connection is needed.



Product #	Description	UPC Code	Dimensions (inches)		Package Quantity
			D	H	
0811SD	Offset adapter	096942705899	9.8	3.6	8

8" Locking Adapter

Uses: Use to attach 8" corrugated & PVC pipe to 18" DrainTech drain basins where a straight-line connection is needed.



Product #	Description	UPC Code	Dimensions (inches)		Package Quantity
			D	H	
0812SD	Locking adapter	096942705912	10.0	2.4	8

Corrugated to Sewer & Drain Adapter

Uses: Use to attach corrugated PE pipe to sewer and drain pipe. Attaches to clay pipe, ductile iron, PVC.



Product #	Description	UPC Code	Package Quantity
0362AA	3" corrugated to smoothwall adapter	096942300551	24
0362SD	3" corrugated to S&D adapter	096942740456	24
0462AA	4" corrugated to smoothwall adapter	096942301756	24
0462SD	4" corrugated to S&D adapter	096942717861	24
0662AA	6" corrugated to smoothwall adapter	096942304252	11
0662SD	6" corrugated to S&D adapter	096942740463	11
0862AA	8" corrugated to smoothwall adapter	096942305006	9

Solid End Plug

Uses: Use to cap off the end of singlewall corrugated HDPE pipe.



Product #	Description	UPC Code	Package Quantity
0333AA	3" Solid End Plug	096942300407	100
0433AA	4" Solid End Plug	096942301350	100

Applications: Use with pipe and connecting fittings where a drain basin is not needed. Use with corrugated singlewall pipe, TripleWall pipe, leach pipe or PVC pipe.

Grates for 3", 4", 6" Pipe

ADA Compliant



Product #	Description	UPC Code	Dimensions (inches)		Package Quantity
			D	H	
0330SDB	Black Grate for 3" pipe	096942705257	3.6	1.6	40
0330SDG	Green Grate for 3" pipe	096942705264	3.6	1.6	40
0330SDS	Sand Grate for 3" pipe	096942709927	3.6	1.6	40
0440SDB	Black Grate for 4" pipe	096942705455	4.6	1.5	25
0440SDG	Green Grate for 4" pipe	096942705462	4.6	1.5	25
0440SDS	Sand Grate for 4" pipe	096942709934	4.6	1.5	25
0660SDB	Black Grate for 6" pipe	096942705745	6.7	1.8	10
0660SDG	Green Grate for 6" pipe	096942705752	6.7	1.8	10
0660SDS	Sand Grate for 6" pipe	096942709804	6.7	1.8	10
0601SG	Steel Grate for 6" pipe	096942642224	6.7	1.8	1
0601DI	Ductile Iron for 6" pipe	096942642194	5.9	1.3	1

8" Grate for 6" Pipe

ADA Compliant



Product #	Description	UPC Code	Dimensions (inches)		Package Quantity
			D	H	
0860SDB	Black Grate	096942705967	7.7	2.5	10
0860SDG	Green Grate	096942705974	7.7	2.5	10
0860SDS	Sand Grate	096942709811	7.7	2.5	10

8" Grate for 8" Pipe

ADA Compliant



Product #	Description	UPC Code	Dimensions (inches)		Package Quantity
			D	H	
0801SG	Steel Grate	096942645966	7.8	2.4	1

10" Grate for 8" Pipe

ADA Compliant



Product #	Description	UPC Code	Dimensions (inches)		Package Quantity
			D	H	
1080SDB	Black Grate	096942706346	9.8	2.8	10
1080SDG	Green Grate	096942706353	9.8	2.8	10
1080SDS	Sand Grate	096942709941	9.8	2.8	10

10" Grate for 10" Pipe

ADA Compliant



Product #	Description	UPC Code	Dimensions (inches)		Package Quantity
			D	H	
1001SG	Steel Grate	096942649605	12.0	2.8	1

Applications: Use with pipe and connecting fittings where a drain basin is not needed or where space doesn't allow the use of a basin. Use with corrugated singlewall pipe, TripleWall pipe, leach pipe or PVC pipe.

Atrium Grates for 3", 4", 6" Pipe



Product #	Description	UPC Code	Dimensions (inches)		Package Quantity
			D	H	
0333SDB	Black Grate for 3" pipe	096942705295	2.9	3.7	20
0333SDG	Green Grate for 3" pipe	096942705301	2.9	3.7	20
0333SDS	Sand Grate for 3" pipe	096942709903	2.9	3.7	20
0443SDB	Black Grate for 4" pipe	096942705493	4.0	4.6	20
0443SDG	Green Grate for 4" pipe	096942705509	4.0	4.6	20
0443SDS	Sand Grate for 4" pipe	096942709910	4.0	4.6	20
0663SDB	Black Grate for 6" pipe	096942705783	6.7	5.6	10
0663SDG	Green Grate for 6" pipe	096942705790	6.7	5.6	10
0663SDS	Sand Grate for 6" pipe	096942709859	6.7	5.6	10

Grates that fit 6" pipe can also be used with 6" round basins

Square Grates for 3", 4", 6" Pipe

ADA Compliant



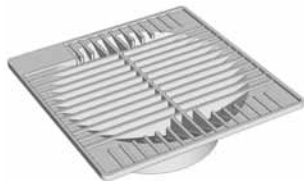
4" and 5" Square Grates



6" Square Grate



7" and 8" Square Grates



9" Square Grate

Product #	Description	UPC Code	Dimensions (inches)			Package Quantity
			L	D	H	
0432SDB	4" Black Grate for 3" Pipe	096942705417	3.6	3.6	1.6	40
0432SDG	4" Green Grate for 3" Pipe	096942705424	3.6	3.6	1.6	40
0432SDS	4" Sand Grate for 3" Pipe	096942709965	3.6	3.6	1.6	40
0542SDB	5" Black Grate for 4" Pipe	096942705561	3.6	3.6	1.6	40
0542SDG	5" Green Grate for 4" Pipe	096942705578	4.6	4.6	1.8	25
0542SDS	5" Sand Grate for 4" Pipe	096942709972	4.6	4.6	1.8	25
0642SDB	6" Black Grate for 4" Pipe*	096942705707	5.9	5.9	2.0	10
0642SDG	6" Green Grate for 4" Pipe*	096942705714	5.9	5.9	2.0	10
0642SDS	6" Sand Grate for 4" Pipe*	096942709989	5.9	5.9	2.0	10
0762SDB	7" Black Grate for 6" Pipe	096942705875	6.9	6.9	2.4	10
0762SDG	7" Green Grate for 6" Pipe	096942705882	6.9	6.9	2.4	10
0762SDS	7" Sand Grate for 6" Pipe	096942709828	6.9	6.9	2.4	10
0862SDB	8" Black Grate for 6" Pipe	096942706001	7.9	7.9	2.4	10
0862SDG	8" Green Grate for 6" Pipe	096942706018	7.9	7.9	2.4	10
0862SDS	8" Sand Grate for 6" Pipe	096942709835	7.9	7.9	2.4	10
0962SDB	9" Black Grate for 6" Pipe	096942706230	8.9	8.9	2.5	10
0962SDG	9" Green Grate for 6" Pipe	096942706247	8.9	8.9	2.5	10
0962SDS	9" Sand Grate for 6" Pipe	096942709842	8.9	8.9	2.5	10

Grates that fit 6" pipe can also be used with 6" round basins

* Grate also fits around 3" pipe

3" & 4" Emitter

Use with: 3", 4" corrugated singlewall elbow or tee fittings; 3", 4" S&D PVC elbow or tee fittings.



Product #	Description	UPC Code	Dimensions (inches)			Package Quantity
			L	D	H	
3400SD	3" and 4" Emmitter	096942708432	5.9	5.9	2.2	20

3"/4" Emitters with 90° Elbows



Product #	Description	UPC Code	Dimensions (inches)			Package Quantity
			L	D	H	
3491SD	Emitter with 3" PVC 90 elbow	096942708449	8.9	8.9	6.5	10
3492SD	Emitter with 4" PVC 90 elbow	096942709699	8.9	8.9	6.5	10
3493SD	Emitter with 3" CPE 90 elbow	096942708456	8.9	8.9	6.5	10
3494SD	Emitter with 4" CPE 90 elbow	096942708463	8.9	8.9	6.5	10

Mitered Drain

Uses: Unique sloped grate with an attached length of 3", 4" PVC pipe which can be connected to drain pipes with similar couples. Angled grate reduces chance of floating debris clogging the pipe. Can be used as an inlet drain or an outlet drain.



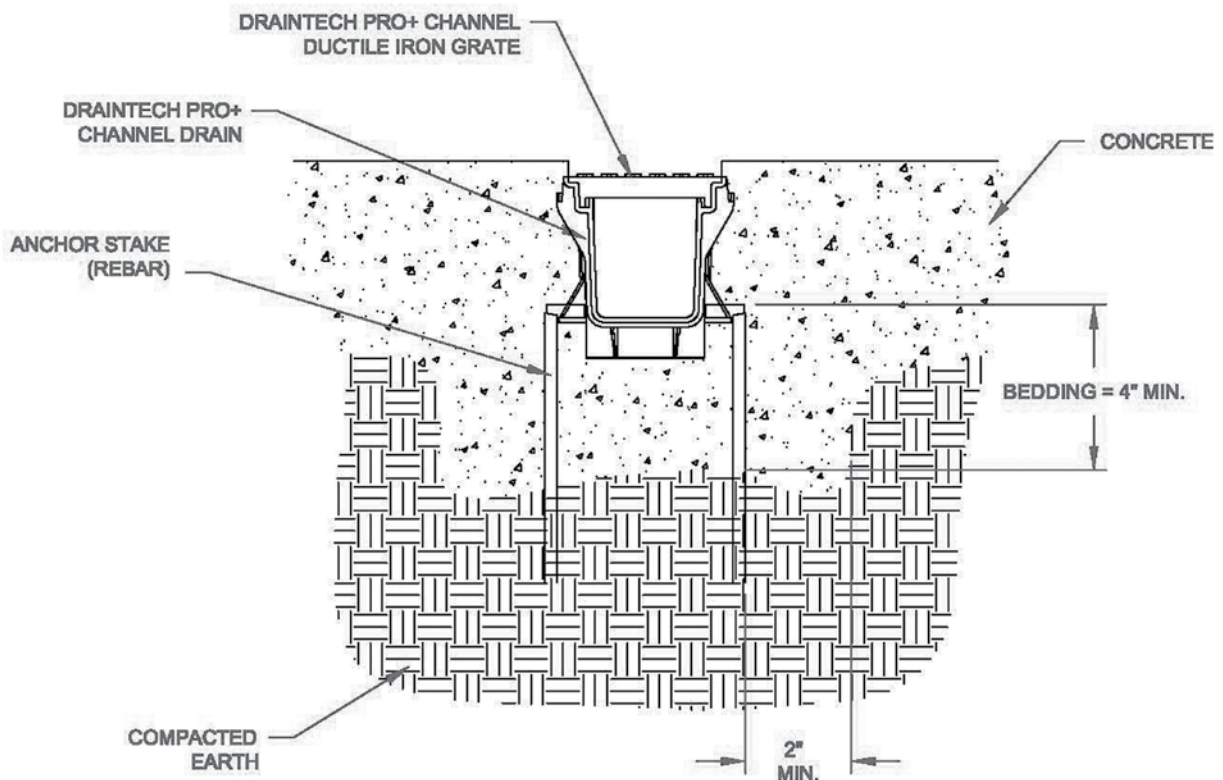
Product #	Description	UPC Code	Dimensions (inches)			Package Quantity
			L	D	H	
0399MDB	Black Drain with 3" pipe	897899001047	15.0	4.0	3.5	1
0399MDY	Gray Drain with 3" pipe	897899001030	15.0	4.0	3.5	1
0499MDB	Black Drain with 4" pipe	897899001061	18.5	5.0	4.5	1
0499MDY	Gray Drain with 4" pipe	897899001054	18.5	5.0	4.5	1

PRO+ Series: Channels, Grates, Valve Boxes

- Ideal for applications that demand a higher quality product
- A higher quality at a modest price increase over commercial grade
- PRO+ grates are designed for a heavier load application
- PRO+ channels with ductile iron grates can be utilized in parking lot and driveways when installed according to our installation guideline #STD-1116B
- PRO+ Series 1200 Valve Box designed with 6 side ports, which allow multiple outlets for manifold designs. These side ports strengthen the side walls of the PRO+ valve boxes



Pro+ Channel Drain in Concrete for Heavy Duty Applications



Applications: Use with pipe and connecting fittings where a drain basin is not needed or where space doesn't allow the use of a basin. Use with corrugated singlewall pipe, TripleWall pipe, leach pipe or PVC pipe.

12" Grate for 12" Pipe

ADA Compliant



Product #	Description	UPC Code	Dimensions (inches) D H	Package Quantity
1210SDB	Black Grate	096942706506	14.0 4.5	6
1210SDG	Green Grate	096942706513	14.0 4.5	6
1210SDS	Sand Grate	096942709958	14.0 4.5	6

12" Heavy Duty Grate for 12" Pipe

ADA Compliant



Product #	Description	UPC Code	Dimensions (inches) D H	Package Quantity
1201SDB	Black Grate	096942706506	15.0 4.0	6
1201SDG	Green Grate	096942711494	15.0 4.0	6
1201SG	Steel Grate	09694265612	14.0 4.5	1

15" Heavy Duty Grate for 15" Pipe

ADA Compliant



Product #	Description	UPC Code	Dimensions (inches) D H	Package Quantity
1501SDG	Green Grate	096942708142	17.5 4.0	1
1501SG	Steel Grate	096942657532	17.5 4.0	1

18" Heavy Duty Grate for 18" Pipe

ADA Compliant



Product #	Description	UPC Code	Dimensions (inches) D H	Package Quantity
1801SG	Steel Grate	096942661720	23.0 3.0	1
1801SDG	Green Grate	096942740609	23.0 3.0	1

24" Grate for 24" Pipe

ADA Compliant



Product #	Description	UPC Code	Dimensions (inches) D H	Package Quantity
2401SG	Steel Grate	096942666732	24.0 2.0	1

Round Solid Lids for Pipe

Product #	Description	UPC Code	Dimensions (inches) D H	Package Quantity
1251SDG	Green Lid	096942711562	15.0 4.0	1

Applications: Use in areas with heavy foot traffic or light vehicular traffic (bikes, golf carts), where a sturdier grate is needed. 6" round grates can be used with 6" DrainTech round basins. Other sizes of drop-in grates fit directly into pipe.

Nyloplast® Ductile Iron



0601DI



2401DI

Product #	Description	UPC Code	Dimensions	
			D	H
0601DI	6" round grate for 6" pipe	096942642194	5.9	1.3
0801DI	8" round grate for 8" pipe	096942645942	7.9	1.3
1001DI	10" round grate for 10" pipe	096942649575	12.0	1.5
1201DI	12" round grate for 12" pipe	096942652582	14.5	1.5
1501DI	15" round grate for 15" pipe	096942657495	18.0	1.5
1801DI	18" round grate for 18" pipe	096942661706	23.0	2.0
2401DI	24" round grate for 24" pipe	096942666718	28.0	2.0

Product conforms to ASTM A536 Grade 70-50-05.

Nyloplast ductile iron drop-in grates are available by special order only.

Please refer to reference section for Nyloplast drop-in grates inlet capacity chart.

Please refer to Nyloplast catalog for Nyloplast product offerings.

Brass & Chrome Grates for Channels and Basins



Product #	Description	UPC Code	Dimensions (inches)		Package Quantity
			D	H	
0330SDPBR	3" polished brass, 3" pipe	096942717366	3.25	1.5	36
0330SDPCR	3" polished chrome, 3" pipe	096942717373	3.25	1.5	36
0330SDSBR	3" satin brass, 3" pipe	096942717380	3.6	1.5	36
0330SDSCR	3" satin chrome, 3" pipe	096942717397	3.6	1.5	36
0440SDSBR	4" satin brass, 4" pipe	096942717663	4.25	1.5	27
0440SDPCR	4" polished chrome, 4" pipe	096942740524	4.25	1.5	27





- Ideal for light duty applications
- Designed with snap together parts for easier assembly. No need for glue or solvent cement.
- Channels can be easily field cut multiple times to customize to your project lengths.
- Each 4-foot channel section has six multiple bottom outlets which fit to 3" and 4" pipe.
- Atrium bottom outlet adapters snap into any outlet and adapt to 3" and 4" pipe.
- Channel parts can be custom fabricated to your construction needs.
- Channels can be fabricated to your project angle specifications.
- Ductile iron grates with concrete encasement is required for medium to heavy traffic loads (STD-1116B)



5" PRO+ Channel Kits



Uses: Installation in light traffic areas, garage door entrances, patios and landscaped areas. Kits include 4 feet of 5" PRO+ channel, 4 feet of 5" PRO+ channel grate, one end cap and 4 metal clips. Easily field cut to desired lengths. Clips used to attach field cut sections.

Product #	Description	UPC Code	Dimensions (inches)			Package Quantity
			L	D	H	
0584CHBK	4' Black Channel Kit	096942741316	49.0	5.5	5.6	1
0584CHGK	4' Green Channel Kit	096942741309	49.0	5.5	5.6	1
0584CHYK	4' Gray Channel Kit	096942741293	49.0	5.5	5.6	1
0588CHBK	8' Black Channel Kit	096942741361	49.0	5.5	12.0	4
0588CHYK	8' Gray Channel Kit	096942741354	49.0	5.5	12.0	4

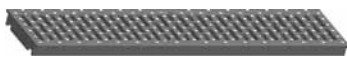
5" PRO+ Channel



Uses: Add a grate to fit the color needed.

Product #	Description	UPC Code	Dimensions (inches)			Package Quantity
			L	D	H	
0584CHB	4' Black Channel	096942741385	48.0	5.5	6.0	1
0584CHY	4' Gray Channel	096942741378	48.0	5.5	6.0	1

5" PRO+ Channel Grate ADA Compliant



Uses: Variety of colors for specific applications.

Product #	Description	UPC Code	Dimensions (inches)			Package Quantity
			L	D	H	
0501CHDI	1-foot ductile iron	096942717601	12.0	4.8	1.0	10
0501CHPBR	1-foot polish brass	096942717335	12.0	4.8	1.0	10
0501CHSBR	1-foot satin brass	096942717342	12.0	4.8	1.0	10
0524CHB	2-foot black	096942709729	24.0	4.8	1.0	12
0524CHG	2-foot green	096942709712	24.0	4.8	1.0	12
0524CHY	2-foot gray	096942709705	24.0	4.8	1.0	12
0524CHS	2-foot sand	096942711821	24.0	4.8	1.0	12

5" PRO+ Channel Solid End Cap



Uses: Used to close either end of PRO+ channel.

Product #	Description	UPC Code	Dimensions (inches)			Package Quantity
			L	D	H	
0583CHB	Black End Cap	096942741422	1.5	5.5	5.6	10
0583CHY	Gray End Cap	096942741408	1.5	5.5	5.6	10

5" PRO+ Channel Atrium Outlet



Uses: Can be used to create a screened outlet. Adapts to 3" & 4" SDR35/S&D fittings.

Product #	Description	UPC Code	Dimensions (inches)			Package Quantity
			L	D	H	
0585CHY	Gray Atrium Outlet	096942741392	4.3	4.5	5.0	10
0585CHB	Black Atrium Outlet	096942741415	4.3	4.5	5.0	10

PRO+ Tee



Product #	Description	UPC Code	Dimensions (in.)			Package Quantity
			L	D	H	
0560CHB-FAB	Black Grate Channel Tee	096942742566	15.0	10.0	5.6	1
0560CHY-FAB	Gray Grate Channel Tee	096942742559	15.0	10.0	5.6	1

PRO+ 22 Degree Elbow



Product #	Description	UPC Code	Dimensions (in.)			Package Quantity
			L	D	H	
0522CHB-FAB	Black Grate 22° Channel Elbow	096942742542	18.0	5.5	5.6	1
0522CHY-FAB	Gray Grate 22° Channel Elbow	096942742535	18.0	5.5	5.6	1

PRO+ Multi Cross Tee

Product #	Description	UPC Code	Dimensions (in.)			Package Quantity
			L	D	H	
0530CHB-FAB	Black Grate Cross Tee		15.0	15.0	5.6	1
0530CHY-FAB	Gray Grate Cross Tee		15.0	15.0	5.6	1

PRO+ 45 Degree Elbow



Product #	Description	UPC Code	Dimensions (in.)			Package Quantity
			L	D	H	
0545CHB-FAB	Black Grate 45° Channel Elbow	096942742528	18.0	10.0	5.6	1
0545CHY-FAB	Gray Grate 45° Channel Elbow	096942742511	18.0	10.0	5.6	1

PRO+ 90 Degree Elbow



Product #	Description	UPC Code	Dimensions (in.)			Package Quantity
			L	D	H	
0590CHB-FAB	Black Grate 90° Channel Elbow	096942742504	10.0	10.0	5.6	1
0590CHY-FAB	Gray Grate 90° Channel Elbow	096942742498	10.0	10.0	5.6	1

Channel Screws

Product #	Description	UPC Code	Dimensions (in.)		Package Quantity
			Size	L	
0600CHSS	Flat Phillips Stainless Steel	xxxxxxxxxxxx	10	1.25	
0600CHZ	Flat Phillips Black	xxxxxxxxxxxx	10	1.25	
0600CHBR	Flat Phillips Satin Brass	xxxxxxxxxxxx	10	1.25	

6" PRO+ Round Valve Box With Lid* Use: Valve boxes are overlapping lids.



Product #	Description	UPC Code	Dimensions (in.)			Package/ Pallet Quantity
			L	D	H	
0609VB	Black Box/Green Lid	096942708333	8.5	8.5	9.5	8/400
0609VBSS-BC	Sand Box/Sand Lid		6.1	6.1	9.0	8/400

10" PRO+ Round Valve Box With Lid* Use: Valve boxes contain overlapping lids.



Product #	Description	UPC Code	Dimensions (in.)			Package/ Pallet Quantity
			L	D	H	
1100VB	Black Box/Green Lid	096942742702	10.3	10.3	10.0	1/99
1100VBGG-BC	Green Box/Green Lid	096942742733	10.3	10.3	10.0	1/99
1100VBGGBD-BC	Green Box/Green Bolt Down Lid	096942742740	10.3	10.3	10.0	1/99
1100VBGSEW-BC	Black Box/Green Bolt Down Sewer Lid		10.3	10.3	10.0	1/99
1100VBGSOL-BC	Black Box/Green Solid Lid	096942743860	10.3	10.3	10.0	1/99
1100VBPPC-BC	Purple Box/Purple Lid	096942742757	10.3	10.3	10.0	1/99
1100VBPPBD-BC	Purple Box/Purple Bolt Down Lid	096942742764	10.3	10.3	10.0	1/99
1100VBSS-BC	Sand Box/Sand Lid	096942742771	10.3	10.3	10.0	1/99
1100VBSSBD-BC	Sand Box/Sand Bolt Down Lid	096942742788	10.3	10.3	10.0	1/99
1100VBBS-BC	Black Box/Sand Lid		10.3	10.3	10.0	1/99
1100VBBWAT-BC	Black Box/Black Lid		10.3	10.3	10.0	1/99

10" PRO+ Round Valve Box Body*



Product #	Description	UPC Code	Dimensions (in.)			Package/ Pallet Quantity
			L	D	H	
1100VBB-Body	Black Box Body	096942742658	10.3	10.3	10.0	1/99

10" PRO+ Round Overlapping Valve Box Lid*



Product #	Description	UPC Code	Dimensions (in.)			Package/ Pallet Quantity
			L	D	H	
1100VBB-C	10" Black Lid		10.3	10.3	10.0	1/350
1100VBG-C	10" Green Lid	096942742672	10.3	10.3	10.0	1/350
1100VBGSOL-C	10" Green Solid Lid	096942742665	10.3	10.3	10.0	1/3500

* Product is available in various colors.

12" PRO+ Rectangle Valve Box With Lid*



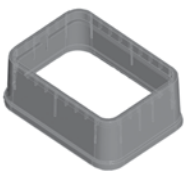
Product #	Description	UPC Code	Dimensions (in.)			Package/ Pallet Quantity
			L	D	H	
1200VB	Black Box/Green Lid	096942742795	19.0	14.0	12.0	1/72
1200VBBBSOL-BC	Black Box/Black Solid Lid		19.0	14.0	12.0	1/72
1200VBBBU-BC	Black Box/Blue Lid		19.0	14.0	12.0	1/72
1200VBBG-BC	Black Box/Green Solid Lid		19.0	14.0	12.0	1/72
1200VBBBREA-BC	Black Box/Black Reader Lid	096942742801	19.0	14.0	12.0	1/72
1200VBBBREA2TR-BC	Black Box/Black Touch Reader Lid		19.0	14.0	12.0	1/72
1200VBBB-BC	Black Box/Black Solid Lid	096942743914	19.0	14.0	12.0	1/72
1200VBBUREA-BC	Black Box/Blue Reader Lid	096942742825	19.0	14.0	12.0	1/72
1200VBBBU-BC	Black Box/Blue Solid Lid	096942742832	19.0	14.0	12.0	1/72
1200VBBBCIREA-BC	Black Box/Cast Iron Reader Lid	096942742849	19.0	14.0	12.0	1/72
1200VBCISOL-BC	Black Box/Solid Cast Iron Lid		19.0	14.0	12.0	1/72
1200VBGG-BC	Green Box/Green Lid	096942742863	19.0	14.0	12.0	1/72
1200VBGGBD-BC	Green Box/Green Bolt Down Lid	096942742870	19.0	14.0	12.0	1/72
1200VBBSEW-BC	Black Box/Black Marked Sewer Lid		19.0	14.0	12.0	1/72
1200VBPP-BC	Purple Box/Purple Lid	096942742894	19.0	14.0	12.0	1/72
1200VBPPBD-BC	Purple Box/Purple Bolt Down Lid	096942742900	19.0	14.0	12.0	1/72
1200VBSS-BC	Sand Box/Sand Lid	096942742917	19.0	14.0	12.0	1/72
1200VBSSBD-BC	Sand Box/Sand Bolt Down Lid	096942742924	19.0	14.0	12.0	1/72
1200VBO-BC	Black Box/Green Overlapping Lid		19.0	14.0	12.0	1/72
1200VBCIOREA-BC	Black Box/CI Overlapping Reader Lid	096942743935	19.0	14.0	12.0	1/72
1200VBBOWAT-BC	Black Box/Black Overlapping Water	096942742948	19.0	14.0	12.0	1/72

12" PRO+ Rectangle Valve Box Lid*



Product #	Description	UPC Code	Dimensions (in.)			Package/ Pallet Quantity
			L	D	H	
1200VBB-C	Black Lid	096942743877	18.0	12.0	12.0	1/200
1200VBSOL-C	Black Solid Lid		18.0	12.0	12.0	1/200
1200VBBBREA-C	Black Reader Lid		18.0	12.0	12.0	1/200
1200VBBUOREA-C	Blue Reader Overlap Reader		16.5	11.0	1.5	1/200
1200VBBBCIREA-C	Cast Iron Reader Lid	096942743921	18.0	12.0	12.0	1/200

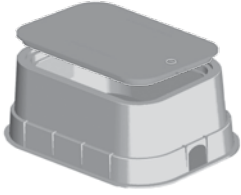
12" PRO+ Rectangle Valve Box Risers*



Product #	Description	UPC Code	Dimensions (in.)			Package/ Pallet Quantity
			L	D	H	
0618VBR	Black Riser	096942708388	18.0	12.0	6.0	1
0618VBRG	Green Riser		18.0	12.0	6.0	1
0618VBS-R	Sand Riser	096942710060	18.0	12.0	6.0	1

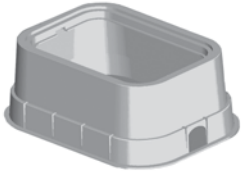
* Product is available in various colors.

12" Jumbo Box With Lid*



Product #	Description	UPC Code	Dimensions (inches)			Package/Pallet Quantity
			L	D	H	
1222VB	12" Black Box/Green Lid	096942708395	22.0	16.0	12.0	1/32

12" Jumbo Box Body*



Product #	Description	UPC Code	Dimensions (inches)			Package/Pallet Quantity
			L	D	H	
1222VBB-Body	Black Box Body Only	096942741699	22.7	16.0	12.0	1/32

12" Jumbo Box Lid Only*



Product #	Description	UPC Code	Dimensions (inches)			Package/Pallet Quantity
			L	D	H	
0217VBLN	Green Lid	096942717588	15.7	21.7	1.3	1/175

12" Jumbo Box Risers*



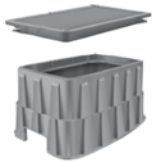
Product #	Description	UPC Code	Dimensions (inches)			Package/Pallet Quantity
			L	D	H	
0622VBRB	6" Black Riser for 6" Box	096942710978	22.7	16.4	6.4	1/40
1222VBB-R	6" Black Riser for 12" Box	096942708401	22.0	16.0	6.0	1/40
1222VBG-R	6" Green Riser for 12" Box	096942710176	22.0	16.0	6.0	1/40

13" Super Jumbo Valve Box*



Product #	Description	UPC Code	Dimensions (inches)			Package/Pallet Quantity
			L	D	H	
1324VB-REA	Black Reader Lid		14.0	23.0	12.0	1/6
1324VBCI-REA	Cast Iron Reader Lid		14.0	23.0	12.0	1/6
1324VBCI-SOL	Cast Iron Solid Lid		14.0	23.0	12.0	1/6

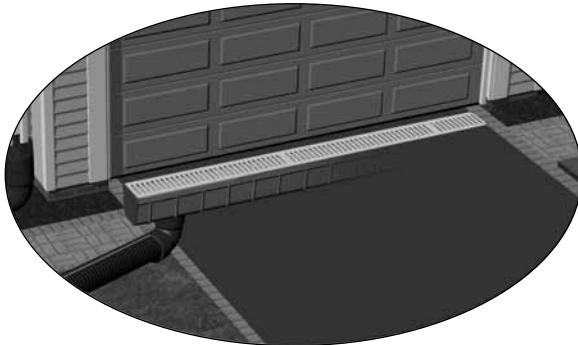
17" Super Jumbo Valve Box*



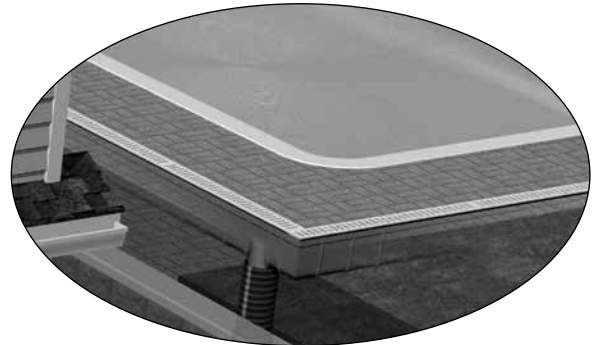
Product #	Description	UPC Code	Dimensions (inches)			Package Quantity
			L	D	H	
1730VBREA-BC	Black Reader Lid		21.0	34.0	12.0	1/4
1730VBCIREA-BC	Cast Iron Reader Lid	096942743969	21.0	34.0	12.0	1/4
1730VBCISOL-BC	Cast Iron Solid Lid		21.0	34.0	12.0	1/4

* Product is available in various colors.

Applications: Channel basins and grates are used where hard surfaces create a greater volume of runoff than can be handled by round or square basins. Ideal for driveways, sidewalks, garages, swimming pools, patios, sports fields and greenhouses.

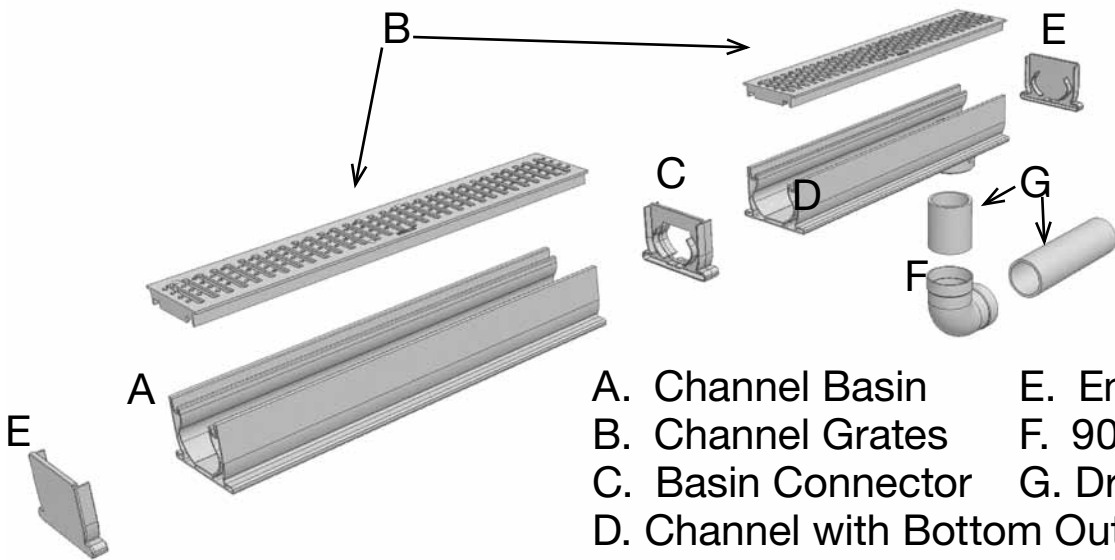


Use 5" channel and grate to collect runoff from driveways and sidewalks



Edge pool decks and patios with 3" or 5" channel drains to keep them dry and less slippery

PVC Series



- A. Channel Basin
- B. Channel Grates
- C. Basin Connector
- D. Channel with Bottom Outlet
- E. End Caps
- F. 90° Elbow Fitting
- G. Drainage Pipe

3" Channel Basin



Uses: 3", 4" corrugated singlewall pipe; 3", 4" TripleWall pipe; 3", 4" PVC pipe; singlewall HDPE fittings; DrainTech 3" channel grates and DrainTech 3" fittings. We recommend one channel bottom outlet for every 10 feet of channel basin installed. Anchor stakes available.

Product #	Description	UPC Code	Dimensions (inches)			Package Quantity
			L	D	H	
0304CH	4' Channel Basin	096942709088	48.0	3.8	3.1	16
0306CH	6' Channel Basin	096942709095	72.0	3.8	3.1	8
0310CH	10' Channel Basin	096942709101	120.0	3.8	3.1	4

3" Channel Grate ADA Compliant



Uses: 3" DrainTech Channel Basin. Combine two-foot lengths to cover longer lengths of channel basin. Gray is standard color.

Product #	Description	UPC Code	Dimensions (inches)			Package Quantity
			L	D	H	
0301CHDI	One-foot ductile iron	096942717595	12.0	3.8	1.0	12
0301CHPBR	One-foot polished brass	096942717311	12.0	3.8	1.0	12
0301CHSBR	One-foot satin brass	096942717328	12.0	3.8	1.0	12
0324CHB	Two-foot black	096942709750	24.0	3.8	1.0	12
0324CHG	Two-foot green	096942709743	24.0	3.8	1.0	12
0324CHY	Two-foot gray	096942709736	24.0	3.8	1.0	12
0324CHS	Two-foot sand	096942711807	24.0	3.8	1.0	12

3" Channel Bottom Outlet



Uses: Two-foot channel basin section has bottom drain outlet molded into it.

Product #	Description	UPC Code	Dimensions (inches)			Package Quantity
			L	D	H	
0315CH	Channel Bottom Outlet	096942709149	24.0	3.8	7.0	6

3" Channel Bottom Kit



A complete package: Kit includes a 4'-foot channel, one channel coupler and one solid end cap. Both models come with top grates. Attach drainage pipe or fittings to the outlet.

Product #	Description	UPC Code	Dimensions (inches)			Package Quantity
			L	D	H	
0315CHYK	Channel Bottom Outlet Kit	096942711999	48.0	3.8	7.0	6

3" Channel Basin 45° Elbow Grate

Use: Use to join two sections of channel basin at a 45° angle.



Product #	Description	UPC Code	Dimensions (inches)			Package Quantity
			L	W	H	
0345CHY	Gray basin with 45 elbow	096942710879	7.5	3.5	3.4	1
0345CHS	Sand basin with 45 elbow	096942711814	7.5	3.5	3.4	1
0345CHB	Black basin with 45 elbow	096942740425	7.5	3.5	3.4	1
0345CHG	Green basin with 45 elbow	096942740418	7.5	3.5	3.4	1

3" Channel Basin 90° Elbow Grate

Use: Use to join two sections of channel basin at a 90° angle.



Product #	Description	UPC Code	Dimensions (inches)			Package Quantity
			L	W	H	
0390CHY	Gray basin with 90 elbow	096942710220	9.0	9.0	3.3	1
0390CHS	Sand basin with 90 elbow	096942710886	9.0	9.0	3.3	1
0390CHB	Black basin with 90 elbow	096942740494	9.0	9.0	3.3	1
0390CHG	Green basin with 90 elbow	096942740500	9.0	9.0	3.3	1

3" Channel Basin Tee Grate

Use: Use to run a secondary channel basin off a main channel at a 90° angle.



Product #	Description	UPC Code	Dimensions (inches)			Package Quantity
			L	W	H	
0360CHY	Gray basin tee	096942710213	9.0	6.3	3.3	1
0360CHS	Sand basin tee	096942740487	9.0	6.3	3.3	1
0360CHB	Black basin tee	096942740432	9.0	6.3	3.3	1
0360CHG	Green basin tee	096942740449	9.0	6.3	3.3	1

3" Channel Bottom Outlet

Uses: Attaches drainage line to 3" channel basin.



Product #	Description	UPC Code	Dimensions (inches)			Package Quantity
			L	D	H	
0314CH	Channel End Outlet	096942709132	3.3	3.8	1.3	20

3" Channel Solid End Cap

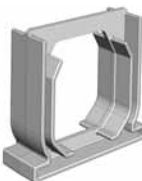
Uses: Caps off 3" channel basin.



Product #	Description	UPC Code	Dimensions (inches)			Package Quantity
			L	D	H	
0313CH	Solid End Cap	096942709125	3.3	3.8	1.3	20

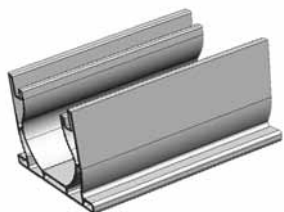
3" Channel Coupler

Uses: Joins sections of 3" channel basin.



Product #	Description	UPC Code	Dimensions (inches)			Package Quantity
			L	D	H	
0312CH	Channel Coupler	096942709118	3.3	3.8	1.3	20

5" Channel Basin



Uses: 3", 4" corrugated singlewall pipe; 3", 4" TripleWall pipe; 3", 4" PVC pipe; singlewall HDPE fittings; DrainTech 5" channel grates 5" fittings. We recommend one channel bottom outlet for every 10 feet of channel basin installed. Anchor stakes available.

Product #	Description	UPC Code	Dimensions (inches)			Package Quantity
			L	D	H	
0504CH	4' Channel Basin	096942708241	48.0	5.7	3.7	6
0506CH	6' Channel Basin	096942708258	72.0	5.7	3.7	6
0510CH	10' Channel Basin	096942708265	120.0	5.7	3.7	6

5" Channel Grate ADA Compliant



Uses: 5" DrainTech Channel Basin. Combine two-foot lengths to cover longer lengths of channel basin.

Product #	Description	UPC Code	Dimensions (inches)			Package Quantity
			L	D	H	
0501CHDI	One-foot ductile iron	096942717601	12.0	4.8	1.0	10
0501CHPBR	One-foot polished brass	096942717335	12.0	4.8	1.0	10
0501CHSBR	One-foot satin brass	096942717342	12.0	4.8	1.0	10
0524CHB	Two-foot black	096942709729	24.0	4.8	1.0	12
0524CHG	Two-foot green	096942709712	24.0	4.8	1.0	12
0524CHY	Two-foot gray	096942709705	24.0	4.8	1.0	12
0524CHS	Two-foot sand	096942711821	24.0	4.8	1.0	12

5" Channel Bottom Outlet



Uses: Two-foot channel basin section has bottom drain outlet molded into it.

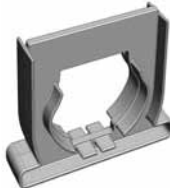
Product #	Description	UPC Code	Dimensions (inches)			Package Quantity
			L	D	H	
0515CH	Channel Bottom Outlet	096942708319	24.0	4.5	3.6	12

5" Channel CPE Offset End Coupler Uses: Join sections of 5" channel basin.



Product #	Description	UPC Code	Dimensions (inches)			Package Quantity
			L	D	H	
0511CH	Channel PVC Offset End Outlet	096942708289	4.0	6.0	3.4	10

5" Channel Coupler Uses: Join sections of 5" channel basin.



Product #	Description	UPC Code	Dimensions (inches)			Package Quantity
			L	D	H	
0512CH	Channel Coupler	096942708289	4.0	6.0	1.3	20

5" Channel Solid End Cap Uses: Cap off 5" channel basin.



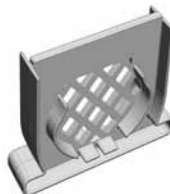
Product #	Description	UPC Code	Dimensions (inches)			Package Quantity
			L	D	H	
0513CH	Channel Solid End Cap	096942708296	4.0	6.0	1.3	20

5" Channel PVC End Outlet Uses: Attach 3", 4" singlewall or S&D drainage line to 5" channel basin.



Product #	Description	UPC Code	Dimensions (inches)			Package Quantity
			L	D	H	
0514CH	Channel PVC End Outlet	096942708302	4.0	6.0	3.4	10

5" Channel Strain Coupler Uses: Join two sections of channel basin to help filter leaves and debris before they reach the drain outlet.



Product #	Description	UPC Code	Dimensions (inches)			Package Quantity
			L	D	H	
0516CH	Channel Strain Coupler	096942708326	4.0	6.0	1.3	20

5" Channel Basin 45° Elbow Grate

Use: Use to join two sections of channel basin at a 45° angle.



Product #	Description	UPC Code	Dimensions (inches)			Package Quantity
			L	W	H	
0545CHY	Gray basin with 45 elbow	096942710893	8.6	5.7	4.0	1
0545CHS	Sand basin with 45 elbow	096942711838	8.6	5.7	4.0	1
0545CHB	Black basin with 45 elbow	096942740364	8.6	5.7	4.0	1
0545CHG	Green basin with 45 elbow	096942740357	8.6	5.7	4.0	1

5" Channel Basin 90° Elbow Grate

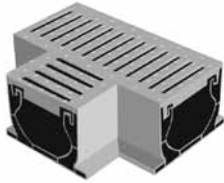
Use: Use to join two sections of channel basin at a 90° angle.



Product #	Description	UPC Code	Dimensions (inches)			Package Quantity
			L	W	H	
0590CHY	Gray basin with 90 elbow	096942710251	10.5	7.5	4.0	1
0590CHS	Sand basin with 90 elbow	096942740562	10.5	7.5	4.0	1
0590CHB	Black basin with 90 elbow	096942740371	10.5	7.5	4.0	1
0590CHG	Green basin with 90 elbow	096942740388	10.5	7.5	4.0	1

5" Channel Basin Tee Grate

Use: Use to run a secondary channel basin off a main channel at a 90° angle.



Product #	Description	UPC Code	Dimensions (inches)			Package Quantity
			L	W	H	
0560CHY	Gray basin tee	096942710244	10.0	7.2	5.0	1
0560CHS	Sand basin tee	096942740555	10.0	7.7	4.0	1
0560CHB	Black basin tee	096942740531	10.0	7.7	4.0	1
0560CHG	Green basin tee	096942740548	10.0	7.7	4.0	1

5" Channel Basin Cross Tee

Uses: Combines two channel basins in cross configuration.



Product #	Description	UPC Code	Dimensions (inches)			Package Quantity
			L	W	H	
0530CHY	Gray basin cross tee	096942710237	10.0	10.0	4.0	1
0530CHB	Black basin cross tee	096942740333	10.0	10.0	4.0	1
0530CHG	Green basin cross tee	096942740340	10.0	10.0	4.0	1

Channel Screws

Product #	Description	UPC Code	Dimensions (in.)		Package Quantity
			Size	L	
0600CHSS	Flat Phillips Stainless Steel	xxxxxxxxxxxx	10	1.25	
0600CHZ	Flat Phillips Black	xxxxxxxxxxxx	10	1.25	
0600CHBR	Flat Phillips Satin Brass	xxxxxxxxxxxx	10	1.25	

6" Round Valve Box With Lid*



Product #	Description	UPC Code	Dimensions (inches)			Package/ Pallet Quantity
			L	D	H	
0609VB	Black Box/Green Lid	096942708333	8.5	8.5	9.5	8/400
0609VBBGSOL-BC	Black Box/Solid Green Lid	096942741484	8.5	8.5	9.5	8/400

6" Round Valve Box Body*



Product #	Description	UPC Code	Dimensions (inches)			Package/ Pallet Quantity
			L	D	H	
0609VBB-Body	Black Box	096942741552	8.5	8.5	9.5	8/400

6" Round Valve Box Lids*



Product #	Description	UPC Code	Dimensions (inches)			Package/ Pallet Quantity
			L	D	H	
0609VBLG	Green Lid	096942741637	6.8	6.8	1.5	8/1,200
0609VBSOLL	Solid Green Lid	096942710985	6.8	6.8	1.5	8/1,200

10" Round Valve Box With Lids*



Product #	Description	UPC Code	Dimensions (inches)			Package/ Pallet Quantity
			L	D	H	
1010VB	Black Box/Green Lid	096942708340	12.5	12.5	10.5	1/99
1100VBGG-BC	Green Box/Green Lid	096942710121	12.5	12.5	10.5	1/99
1010VBGSOL	Black Box/Green Solid Lid	096942741804	12.5	12.5	10.5	1/99

10" Round Valve Box Body*



Product #	Description	UPC Code	Dimensions (inches)			Package/ Pallet Quantity
			L	D	H	
1010VBB-Body	Black Box	096942741651	12.5	12.5	10.0	1/99

10" Round Valve Box Lids*



Product #	Description	UPC Code	Dimensions (inches)			Package/ Pallet Quantity
			L	D	H	
1010VBLB-C	Black Lid		10.3	10.3	1.5	1/800

* Product is available in various colors.

6" x 18" Rectangle Valve Box With Lid*



Product #	Description	UPC Code	Dimensions (inches)			Package/Pallet Quantity
			L	W	H	
0618VB	Black Box/Green Lid	096942708371	18.0	12.0	6.0	1/90
0618VBGG-BC	Green Box/Green Lid	096942710145	18.0	12.0	6.0	1/90
0618VBS	Black Box/Sand Lid	096942710046	18.0	12.0	6.0	1/90
0618VBSS-BC	Sand Box/Sand Lid	096942710053	18.0	12.0	6.0	1/90

10" x 15" Rectangle Valve Box With Lid*



Product #	Description	UPC Code	Dimensions (inches)			Package/Pallet Quantity
			L	D	H	
1015VB	Black Box/Green Lid	096942708357	15.0	10.0	10.0	1/14
1015VBSS-BC	Black Box/Sand Lid	096942710015	15.0	10.0	10.0	1/14

10" x 15" Rectangle Valve Box Body*

Product #	Description	UPC Code	Dimensions (inches)			Package/Pallet Quantity
			L	D	H	
1015VBB-Body	Black Box	096942741705	15.0	10.0	10.0	1/99
1015VBLG	Green Lid	096942711920	15.0	10.0	1.5	1/99

* Product is available in various colors.

12" Rectangle Valve Box With Lid*



Product #	Description	UPC Code	Dimensions (inches)			Package/Pallet Quantity
			L	D	H	
1218VB	Black Box/Green Lid	096942708364	18.0	12.0	12.0	1/54

12" Rectangle Valve Box Body*



Product #	Description	UPC Code	Dimensions (inches)			Package/Pallet Quantity
			L	D	H	
1218VBB-BOX	Black Box	096942741576	18.0	12.0	12.0	1/54

12" Rectangle Valve Box Lids*



Product #	Description	UPC Code	Dimensions (inches)			Package/Pallet Quantity
			L	D	H	
1218VBBL	Black Lid	096942741583	18.0	12.0	1.5	1/140
1218VBG-L	Green Lid	096942711005	18.0	12.0	1.5	1/140

12" Valve Box Risers*

Product #	Description	UPC Code	Dimensions (inches)			Package/Pallet Quantity
			L	D	H	
0618VBR	6" Black Riser	096942708388	18.0	12.0	6.0	1/90

Replacement Lids*

Product #	Description	UPC Code	Dimensions (inches)			Package/Pallet Quantity
			L	D	H	
1015VBG-L	10" Green Rectangle Lid	096942711920	16.5	11.5	1.4	1/199
1218VBG-L	12" Green Rectangle Lid	096942741606	18.0	12.0	1.4	1/140
1222VBG-L	12" Green Jumbo Lid	096942711012	21.2	15.7	1.2	1/32

* Product is available in various colors.

DrainTech Flow Chart

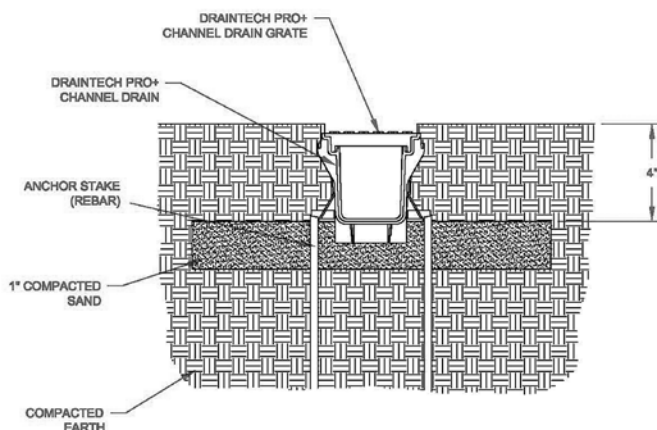
Part Number	Grate Description	Grate Fits Pipe Size	Gallons Per Minute
0333SD	3" Atrium	3"	Up to 12.5 GPM
0443SD	4" Atrium	4"	Up to 19 GPM
0663SD	6" Atrium	6"	Up to 33 GPM
0903SD	9" x 9" Basin Atrium	4"	Up to 55 GPM
1203SD	12" x 12" Basin Atrium	4"	Up to 79 GPM
1803SD	18" x 18" Basin Atrium	6"	Up to 135 GPM
0432SD	4" Square Grate	3"	Up to 4.5 GPM
0542SD	5" Square Grate	4"	Up to 5.6 GPM
0642SD	6" Square Grate	4"	Up to 13 GPM
0962SD	9" Square Grate	6"	Up to 37 GPM
0330SD	3" Round Grate	3"	Up to 4.5 GPM
0440SD	4" Round Grate	4"	Up to 5.6 GPM
0660SD	6" Round Grate	6"	Up to 12 GPM
0860SD	8" Round Grate	6"	Up to 15 GPM
0902SD	9" x 9" Basin Grate	4"	Up to 45 GPM
1202SD	12" x 12" Basin Grate	4"	Up to 62 GPM
1802SD	18" x 18" Basin Grate	6"	Up to 135 GPM
0324CH	3" Channel Grate	N/A	Up to 15 GPM
0524CH	5" Channel Grate	N/A	Up to 28 GPM

FLOW RATES (GALLONS PER MINUTE)

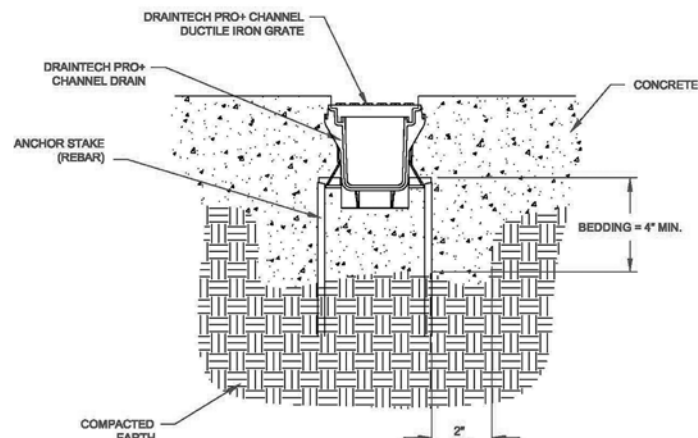
Brass and Ductile Iron Grate Flow Rates at Various Head Pressures

Item	Description	HEAD ABOVE FLOOR (INCHES)								
		(Sq. In.)	½	1	1½	2	2½	3	3½	4
0330SDSBR	3¼ Round Brass Grate	3.06	9.36	13.24	16.21	18.72	20.93	22.93	24.77	26.48
0330SDCI	3¼ Round Cast Iron Grate	3.18	9.73	13.76	16.85	19.46	21.75	23.83	25.74	27.52
0440SDSBR	4¼ Round Brass Grate	5.27	16.12	22.80	27.92	32.24	36.05	39.49	42.65	45.60
0432SDSBR	4¼ Square Brass Grate	5.27	16.12	22.80	27.92	32.24	36.05	39.49	42.65	45.60
0440SDCI	4¼ Round Cast Iron Grate	5.50	16.83	23.79	29.14	33.65	37.62	41.21	44.52	47.59
0301CHDI	3x12 Cast Iron Grate	7.34	22.45	31.75	38.89	44.91	50.21	55.00	59.41	63.51
0642SDSBR	6x6 Brass Grate	7.54	23.07	32.62	39.95	46.13	51.58	56.50	61.03	65.24
0301CHSBR	2.8x12 Brass Grate	11.70	35.79	50.62	61.99	71.58	80.03	87.67	94.70	101.23
0660SDSBR	6½ Brass Round Grate	11.86	36.28	51.31	62.84	72.56	81.13	88.87	95.99	102.62
0501CHDI	5x12 Cast Iron Grate	17.60	53.84	76.14	93.25	107.56	120.93	131.88	142.45	152.28
0501CHSBR	4-11/16x12 Brass Grate	20.50	62.71	88.69	108.26	125.42	140.23	153.61	165.92	177.38
0524CHX	4-11/16x24 Green Grate	31.80	97.45	137.81	168.78	194.90	217.91	238.70	257.83	275.63
0902SDDI	9x9 Cast Iron Grate	34.40	105.23	148.82	182.27	210.47	235.31	257.77	278.42	297.55
1202SDDI	12x12 Cast Iron Grate	63.98	195.72	276.79	339.00	391.45	437.65	479.42	517.83	553.59

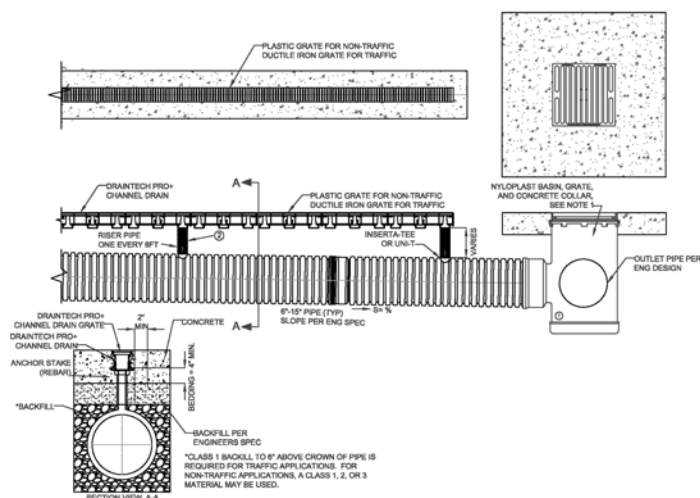
PRO+ Channel Drain in Landscape



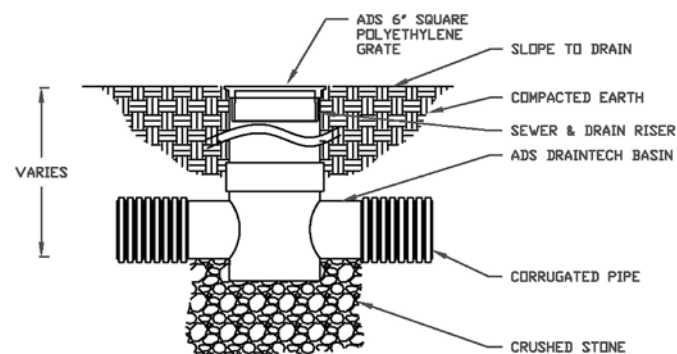
Pro+ Channel Drain in Concrete



Sloped Pipe with Channel Drain








Basin with Corrugated Pipe and Square Grate



Additional CAD and detail sheets available at: www.ads-pipe.com/en/product.asp?productID=125

Load Classifications

Classification	Application	Total Load	Pounds per axle	Grate Installation	Load Class	EN 1433 PSI Rating
 Heavy Duty Over 20 m.p.h.	State DOT Highway	40,000	32,000	DI Grate, concrete encasement	D	1859
 Medium Traffic Under 20 m.p.h.	Parking Lots	30,000	24,000	DI Grate, concrete encasement	C	1162
 Light-Med. Traffic Under 20 m.p.h.	Driveways/ Parking Lots	20,000	16,000	DI Grate, concrete encasement	B	581
 Light Traffic Under 20 m.p.h.	Garage	10,000	8,000	Plastic Grate, concrete encasement	A	70
 Pedestrian	Sidewalks	---	---	Plastic Grate, Soil Backfill	---	---

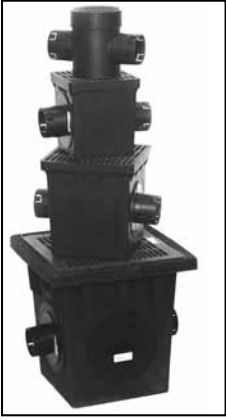
DrainTech PRO+ 8' Channel Drain Kit

ADS introduces the DrainTech PRO+ 5" Channel Drain Kit as the product of choice for light traffic, landscape and turf channel drain applications. This package is designed to make channel drainage easy.



- Each PRO+ 8-foot Channel Kit combines multiple channel parts into one kit
- PRO+ Channel Kit snap-together joints reduce the time needed for installation and eliminates need for cleaners, solvents and couplers
- PRO+ 8-foot Channel Kit is ideal for single car garage door drains
- Each PRO+ 8-foot Channel Kit includes 8' Channel, 8' of grate, 2 end caps, 24 stainless steel screws, 8 fastener clips and an easy-to-follow installation guide
- Optional PRO+ Channel Kits can be cut and re-assembled to accommodate multiple lengths
- PRO+ plastic grates are available in green, black, gray, sand, ductile iron and brass

Merchandise Displays



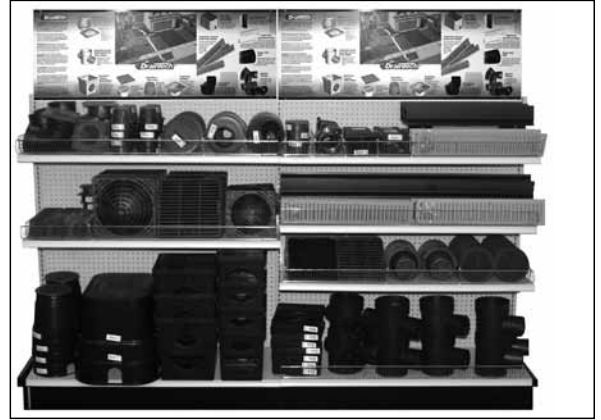
2 Foot Display

For limited floor space, this simple display of 6", 9", 12" & 18" basin kits will work.



4 Foot Display

This display maximizes shelf space while offering customers channels, grates, 6", 9" & 12" basins.



8 Foot Display

This display allows customers to choose from a large assortment of channels, grates, 6", 9" & 12" basins, plus valve boxes. An ideal setup when merchandising to a plumbing and irrigation customer base.



12 Foot Display

The ultimate in inside displays, offering customers a larger assortment of channels, 6", 9" & 12" basins, and valve boxes. This display reduces stocking time.

All display orders include DrainTech Customer Brochures, POP display and DrainTech catalog. Shelving is not included.

ADS "Terms and Conditions of Sale" are available on the ADS website, www.ads-pipe.com
Advanced Drainage Systems, the ADS logo, the Green Stripe, DrainTech® and TripleWall® are registered
trademarks of Advanced Drainage Systems, Inc. Nyloplast® is a registered trademark of Nyloplast.
StormTech® is a registered trademark of StormTech LLC. Duraslot® is a registered trademark of Hall
Construction Products, Inc. The USGBC member logo is a trademark owned by the U.S. Green Building
Council and is used by permission. The logo signifies only that ADS, Inc. is a USGBC member; USGBC
does not review, certify or endorse the products or services offered by its members. Mitered Drain® is
a registered trademark of Mitered Drain, Inc.
© 2011 Advanced Drainage Systems, Inc.
#10559 11/11 MH



ADS offers a wide range of products and systems for home drainage, commercial sites, highway, golf and sports fields, landscape drainage, stormwater management and septic systems.

Visit www.ads-pipe.com for product information, brochures, technical information, installation instructions and product specifications.

Advanced Drainage Systems, Inc.
4640 Trueman Blvd. Hilliard, OH 43026

1-800-821-6710

www.ads-pipe.com

The Most **Advanced** Name in Drainage Systems®

