

# Hammers and Hammer Drills

## Tools and Accessories



### Section Guide

#### Tools

Hammer Drills.....	36
Rotary Hammers .....	37-42
Chipping Hammer .....	40
Combination Hammers .....	41-42
Demolition/Breaker Hammers .....	42-45

#### Accessories

Hammer Attachments .....	46
Hammer Drill Bits .....	47-49
SDS-plus® Accessories .....	50-53
SDS-max® Accessories .....	54-56
Spline Accessories.....	56-57
Hex Chisels .....	57
Breaker Chisels .....	58

# Hammers and Hammer Drills

## Quick Reference Guide



Item #	1191VSR(K)	HD19-2/HD19-2D*	HD21-2	11250VSR	11250VSRD	11253VSR
Drive System	Round Shank	Round Shank	Round Shank	SDS-plus®	SDS-plus®	SDS-plus®
Hammer Classification	Hammer Drill	Hammer Drill	Hammer Drill	Rotary	Rotary	Combination
Amperage	7	8.5	9.2	6.1	6.1	7.2
Impact Energy (ft.-lbs.)	N/A	N/A	N/A	1.6	1.6	2.2
Max. Capacity - Concrete (Masonry)	5/8"	3/4" (7/8")	7/8" (1")	3/4"	3/4"	1"
Optimal Range	1/8" - 5/16"	1/8" - 3/8"	1/8" - 1/2"	5/32" - 5/8"	5/32" - 5/8"	3/16" - 5/8"
Core Bits	N/A	N/A	N/A	1-1/2"	1-1/2"	2-1/2"
RPM Under Load	0-3,000*	0-1,000/0-3,000*	0-900/0-3,000*	0-1,000	0-1,000	0-1,300
BPM Under Load	0-48,000**	0-17,000/0-51,000**	0-15,300/0-51,000**	0-4,400	0-4,400	0-5,800
Modes of Operation	Hammer Drill Rotation Only	Hammer Drill Rotation Only	Hammer Drill Rotation Only	Rotary Hammer Rotation Only	Rotary Hammer Rotation Only	Rotary Hammer Hammer Only Rotation Only
Length	11"	13.4"	13.5"	13.25"	19.6"	14.8"
Weight	4.1 lbs.	5.8 lbs. (7.2 lbs.)	5.9 lbs.	5.4 lbs.	7.4 lbs.	6.4 lbs.

\*No Load RPM

\*\*No Load BPM



Item #	11224VSR/11224VSRC*	11255VSR	RH328VC/RH328VCQ	RH432VCQ	11320VS
Drive System	SDS-plus®	SDS-plus®	SDS-plus®	SDS-plus®	SDS-plus®
Hammer Classification	Combination	Combination	Combination	Combination	Chipping
Amperage	6.9	7.5	8.0	8.5	6.5
Impact Energy (ft.-lbs.)	1.6	2.2	2.6	3.7	3.2
Max. Concrete Capacity	7/8"	1"	1-1/8"	1-1/4"	N/A
Optimal Range	3/16" - 5/8"	3/16" - 5/8"	1/4" - 7/8"	3/8" - 1"	N/A
Core Bits	2-1/2"	2-1/2"	3-1/8"	3-1/2"	N/A
RPM Under Load	0-1,100	0-1,300	0-900	0-760	N/A
BPM Under Load	0-6,150	0-5,800	0-4,000	0-3,600	3,500
Bosch Vibration Control	No	No	Hammer Mechanism and Handle	Hammer Mechanism and Handle	No
Vibration Levels m/s <sup>2</sup>	N/A	N/A	≤ 13	14	N/A
Modes of Operation	Rotary Hammer Hammer Only Rotation Only	Rotary Hammer Hammer Only Rotation Only	Rotary Hammer Rotation Only	Rotary Hammer Hammer Only Rotation Only	Hammer Only
Length	17.5"	17.3"	12.5"/13.6"	15.75"	14.75"
Weight	6.5 lbs.	6.7 lbs.	7.7/7.9 lbs.	10.3 lbs.	7.9 lbs.

\*11224VSRC Includes 3 Jaw Chuck

# Hammers and Hammer Drills

## Quick Reference Guide

Item #	11240	11247	11264EVS	11265EVS	11263EVS	11245EVS
Drive System	SDS-max®	Spline/Round Hex	SDS-max®	Spline/Round Hex	SDS-max®	SDS-max®
Hammer Classification	Combination	Combination	Combination	Combination	Combination	Combination
Amperage	10	10	13	13	13.5	14
Impact Energy (ft.-lbs.)	5.2	5.2	6.8 / 8.1 (turbo)	6.8 / 8.1 (turbo)	9.6 / 11.1	13.3
Max. Concrete Capacity	1-9/16"	1-9/16"	1-5/8"	1-5/8"	1-3/4"	2"
Optimal Range	1/2" - 1-3/8"	1/2" - 1-3/8"	1/2" - 1-7/16"	1/2" - 1-7/16"	5/8" - 1-9/16"	3/4" - 1-3/4"
Through Hole Bits	2-1/2"	2-1/2"	2-9/16"	2-9/16"	3-1/8"	3-1/8"
Core Bits	4"	4"	4-1/8"	4-1/8"	6"	6"
No Load RPM	400	400	170-340	170-340	145-280	120-250
No Load BPM	3,000	3,000	1,700-2,900	1,700-2,900	1,350-2,800	1,100-2,500
Bosch Vibration Control	No	No	Hammer Mechanism and Handle	Hammer Mechanism and Handle	No	No
Vibration Levels m/s <sup>2</sup>	N/A	N/A	10.0	10.0	N/A	N/A
Modes of Operation	Rotary Hammer Hammer Only	Rotary Hammer Hammer Only	Rotation Only Rotary Hammer	Rotary Hammer Hammer Only	Rotary Hammer Hammer Only	Rotary Hammer Hammer Only
Length	17.25"	17.25"	19.25"	19.25"	21"	23.5"
Weight	13.2 lbs.	13.6 lbs.	14.3 lbs.	14.7 lbs.	17.9 lbs.	24.5 lbs.

Item #	11387	11388	11321EVS	11316EVS	11317EVS	11335K	11304(KB/KD)
Drive System	Round Hex	SDS-max®	SDS-max®	SDS-max®	3/4" Hex	1-1/8" Hex Collar	1-1/8" Hex Collar
Hammer Classification	Demolition	Demolition	Demolition	Demolition	Demolition	Breaker	Breaker
Amperage	10	10	13	14	12.8	15	15
Impact Energy (ft.-lbs.)	5.9	5.9	9.6	4.4 - 18.4	4 - 16.5	34	43
BPM	2,800	2,800	1,300-2,900	900-1,890	850-1,800	1,300	1,400
Bosch Vibration Control	No	No	Hammer Mechanism and Handle	No	No	Hammer Mechanism and Handle	No
Vibration Levels m/s <sup>2</sup>	N/A	N/A	8.0	N/A	N/A	10.8	N/A
Modes of Operation	Hammer Only	Hammer Only	Hammer Only	Hammer Only	Hammer Only	Hammer Only	Hammer Only
Length	17.5"	17.5"	18.6"	22.5"	22"	30.4"	29.75"
Weight	12 lbs.	11.6 lbs.	12.8 lbs.	22.5 lbs.	22 lbs.	38 lbs.	64 lbs.

Hammers and Hammer Drills

# Hammers and Hammer Drills

## Hammer Drills

### 1191VSR(K) – Hammer Drill (with Case)



- Light Weight Design - Perfect for small diameter drilling applications
- 2-Mode Selector - Easily converts from rotation only to hammer drill
- Compact Design - Aggressive impact mechanism in combination with a more powerful motor outperforms the competition
- 360° Auxiliary Handle with Built-in Quick Release Depth Gauge
- Variable Speed Trigger
- 1/2" 3-Jaw Chuck - For rugged hammer drilling applications

**Includes:** 360° Auxiliary Handle, Depth Gauge, Chuck Key

**1191VSRK also Includes:** Carrying Case

### HD19-2 – 2 Speed Hammer Drill



- Torque Control Auxiliary Handle - Securely locks into place for maximum control in heavy duty drilling applications
- Dual-Mode Selector - Easily converts from hammer drill mode to rotation only mode
- 2-Speed Gear Box - Select high speed (for concrete) or high torque (for wood and metal) drilling applications
- Integral Slip Clutch - Helps minimize torque reaction
- Metal Gear Housing - For long life and rugged jobsite durability
- Optional Dust Collection - Removable plastic adaptor allows the tool to be easily converted to a hammer drill with dust collection

**Includes:** 360° Auxiliary Handle, Chuck Key, Depth Gauge, Carrying Case

### HD19-2D – 2 Speed Hammer Drill with Dust Collection Unit



- Dual-Mode Selector - Easily converts from hammer drill mode to rotation only mode
- 2-Speed Gear Box - Select high speed (for concrete) or high torque (for wood and metal) drilling applications
- Integral Slip Clutch - Helps minimize torque reaction
- Metal Gear Housing - For long life and rugged jobsite durability
- **Dust Collection with Micro-filter System** - Dramatically reduces dust on the jobsite
- Integrated Dual Fan System - 2nd set of fan blades with the motor creates the air suction for max. dust collection

**Includes:** Dust Collection Unit, 360° Auxiliary Handle, Chuck Key, Depth Gauge, Carrying Case

### HD21-2 – 2 Speed Hammer Drill



- Torque Control Auxiliary Handle - Securely locks into place for maximum control in heavy duty drilling applications
- Dual-Mode Selector - Easily converts from hammer drill mode to rotation only mode
- 2-speed gear box - Select high speed (for concrete) or high torque (for wood and metal drilling applications)
- Integral Slip Clutch - Helps minimize torque reaction
- Metal Gear Housing - For long life and rugged jobsite durability
- Patented Rotating Brush Plate - Easily back out bound-up bits
- Patented Cord Turret - Allows cord to pivot for added convenience and durability

**Includes:** 360° Auxiliary Handle, Chuck Key, Depth Gauge, Carrying Case

#### Specifications

Model#	Rating	Amperage	No Load RPM	No Load BPM	Maximum Capacities (in) Concrete/Masonry	Maximum Capacities (in) Steel	Maximum Capacities (in) Wood	Maximum Capacities (in) Aluminum	Length (in)	Weight (lbs.)
1191VSR(K)	120V AC	7.0	0-3,000	0-48,000	5/8" / 5/8"	1/2"	1-1/2"	5/8"	11.0"	4.1
HD19-2	120V AC	8.5	0-1,000/0-3,000	0-17,000/0-51,000	3/4" / 7/8"	1/2"	1-1/2"	N/A	13.4"	5.8
HD19-2D	120V AC	8.5	0-1,000/0-3,000	0-17,000/0-51,000	3/4" / 7/8"	1/2"	1-1/2"	N/A	18.0"	7.2
HD21-2	120V AC	9.2	0-900/0-3,000	0-15,300/0-51,000	7/8" / 1"	5/8"	1-5/8"	N/A	13.5"	5.9



# Hammers and Hammer Drills

## Rotary Hammers

### 11250VSR – 3/4" SDS-plus® Rotary Hammer



- SDS-plus® Tool Holder - Tool-free bit changes with automatic bit locking, dust protection and maximum impact energy transfer rate
- Dual Mode Selector - Easily converts from rotation only to rotary hammer mode
- Patented Rotating Brush Plate - Provides equal power in reverse and extends brush life
- Integral Clutch - Helps minimize torque reaction
- Variable-speed Reversing Trigger - For accurate bit starting, as well as removing fasteners or bound bits

**Includes:** 360° Auxiliary Handle, Depth Gauge, Carrying Case

### 11250VSRD – 3/4" SDS-plus® Rotary Hammer with Dust Collection



- Compact and Lightweight - 7-7/8" height and only 7.4 lbs
- SDS-plus® Bit System - Tool free bit changes with automatic bit locking, dust protection and maximum impact energy transfer rate
- Dual Mode Selector - 2 modes of operations: rotary hammer, and rotation only mode
- Patented Rotating Brush Plate - Provides equal power in reverse and extends brush life
- Integral Clutch - Helps minimize torque reaction
- 360° Auxiliary Handle - Offset construction provides continuous grip along with a wide range of movement, even in tight spaces
- **Dust Collection with Micro-filter System** - Dramatically reduces dust on the jobsite
- Easily Adjustable Dust Collection Unit - Install or remove with one hand
- Integrated Dual Fan System - 2nd set of fan blades with the motor creates the air suction for max. dust collection

**Includes:** 360° Auxiliary Handle, Depth Gauge, Dust Collection Unit, Carrying Case

Hammers and Hammer Drills

## Popular Mechanics Editors Choice Award

## Professional Builder Top 100 Best New Products



The award winning 11250VSRD 3/4" SDS-plus® Rotary Hammer is the most compact and lightweight dust collection hammer in its class.

The dust collection feature with the Microfilter System captures the highest volume of all size dust particles.



### Specifications

Model#	Rating	Amperage	RPM	BPM	Impact Energy (ft.-lbs.)	Maximum Capacities (in) Concrete	Maximum Capacities (in) Steel	Maximum Capacities (in) Wood	Maximum Capacities (in) Concrete-Thin Wall Core-Bit	Length (in)	Weight (lbs.)
11250VSR	120V	6.1	0-1,000	0-4,400	1.6	3/4"	1/2"	1/2" - 3/4"	1-1/2"	13.25"	5.4
11250VSRD	120V	6.1	0-1,000	0-4,400	1.6	3/4"	1/2"	1/2" - 3/4"	1-1/2"	17.90"	7.4

# Hammers and Hammer Drills

## Rotary Hammers and Dust Extraction Compatibility

**11224VSR(C)** – 7/8" SDS-plus® Bulldog™ Rotary Hammer (with ClicLoc™)



Hammers and Hammer Drills



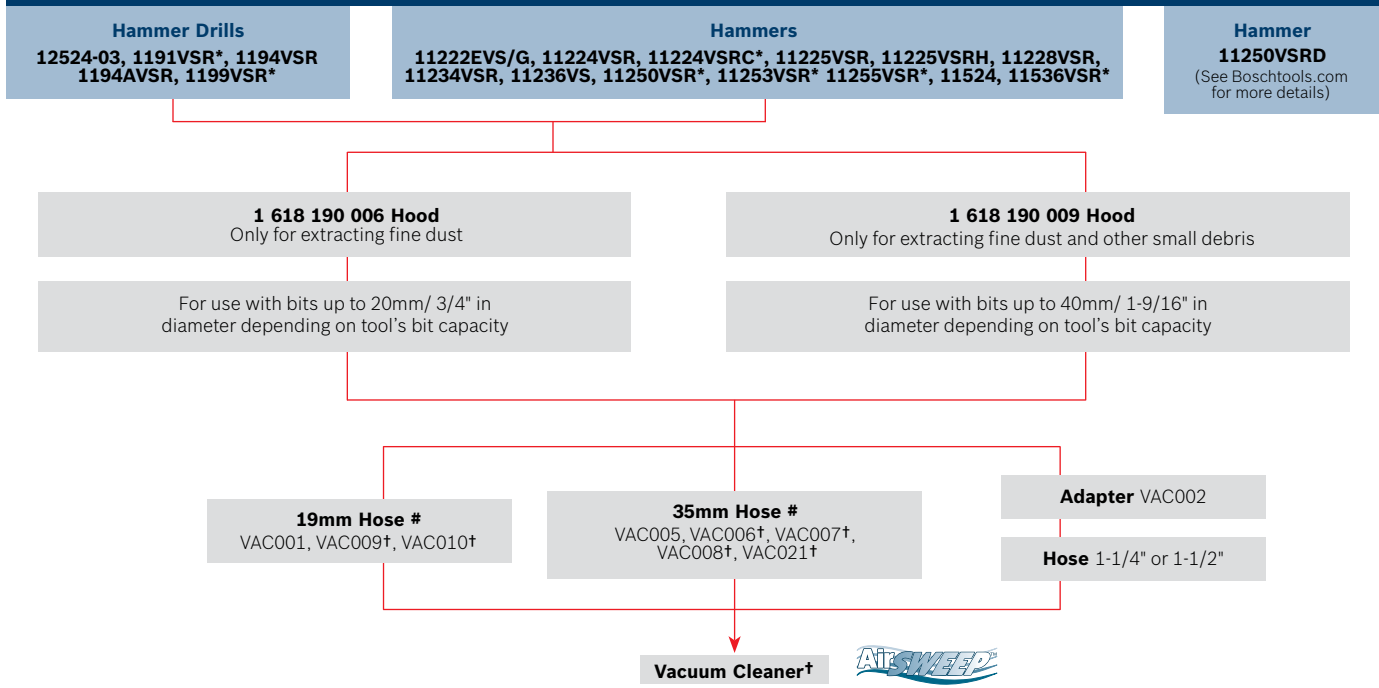
- SDS-plus® Bit System - Tool-free bit changes with automatic bit locking, dust protection and maximum impact energy transfer rate
  - Multi-function Selector - 3 modes of operation, rotation only, rotary hammer and hammer only mode
  - Variable-speed Reversing Trigger - For accurate bit starting, as well as removing fasteners or bound bits
  - Vario-Lock™ Positioning - Rotates and locks chisel into 36 different positions to optimize working angle
  - D-handle Design - For extra control, ideal for overhead and downward drilling applications
  - 360° Auxiliary Handle with Built-in Depth Gauge - Wide range of movement along with consistent drilling depth
  - Integral Clutch - Helps minimize torque reaction
- Includes:** 360° Auxiliary Handle, Depth Gauge, Carrying Case

**11224VSR(C)** also features

- **ClicLoc™ Chuck Change System** - Easily remove the SDS-plus® bit holder and snap on the included keyless carbide-tipped 3-jaw chuck



### Dust Extraction Compatibility Chart



\*When used with a dust extraction hood, this tool requires auxiliary handle 1612025024, which is sold separately and is different from this tool's standard-equipment auxiliary handle.  
†Competitor vacuum cleaners' ports won't accept VAC006-VAC021 locking hoses. They are only for use with Bosch 3931, 3931A and 3931A-PB vacs.

#### Specifications

Model#	Rating	Amperage	No Load RPM	No Load BPM	Impact Energy (ft.-lbs.)	Maximum Capacities (in) Concrete	Maximum Capacities (in) Steel	Maximum Capacities (in) Wood	Maximum Capacities (in) Concrete-Thin Wall Core Bit	Length (in)	Weight (lbs.)
<b>11224VSR(C)</b>	120V	6.9	0-1,100	0-6,150	1.6	7/8"	1/2"	3/4" - 1"	Concrete 2-1/2"	17.5"	6.5



For more details visit [Boschtools.com](http://Boschtools.com)

See pages 46, 50-53, 195-202 for **hammer** accessories.

# Hammers and Hammer Drills

## Rotary Hammers

### 11253VSR – 1" SDS-plus® Bulldog™ Xtreme Rotary Hammer



- Multi-function Selector - 3 modes of operation, rotation only, rotary hammer and hammer-only mode
  - Vario-Lock™ Positioning - Rotates and locks chisel into 36 different positions to optimize working angle
  - Patented Rotating Brush Plate - Provides equal power in forward and reverse
  - Patented Cord Turret - 35° pivot for added flexibility and longer cord life
  - SDS-plus® Bit System - Tool-free bit changes with automatic bit locking, dust protection and maximum impact energy transfer rate
  - Variable-speed Reversing Trigger - For accurate bit starting as well as removing fasteners or bound bits
  - Integral Clutch - Helps minimize torque reaction
- Includes:** Auxiliary Handle, Depth Gauge, Carrying Case

### 11255VSR – 1" SDS-plus® Bulldog™ Xtreme Rotary Hammer



- HammerHook™ - allows quick tool storage during the job.
  - Multi-function Selector - 3 modes of operation, rotation only, rotary hammer and hammer-only mode
  - Vario-Lock™ Positioning - Rotates and locks chisel into 36 different positions to optimize working angle
  - Patented Rotating Brush Plate - Provides equal power in forward and reverse
  - Patented Cord Turret - 35° pivot for added flexibility and longer cord life
  - SDS-plus® Bit System - Tool-free bit changes with automatic bit locking, dust protection and maximum impact energy transfer rate
  - Variable-speed Reversing Trigger - For accurate bit starting as well as removing fasteners or bound bits
  - D-handle design - Ideal for overhead and downward drilling applications
- Includes:** Auxiliary Handle, Depth Gauge, Carrying Case



HammerHook™

JLC May 2009 Winner of Contractor Tool Test

### RH328VC – 1-1/8" SDS-plus® Rotary Hammer RH328VCQ – with Quick Change Chuck System



- Active Vibration Control™ - Vibration reduction in the hammer mechanism and the grip area provides maximum user comfort for extended periods of work 20% LESS vibration (drilling) vs. 11239VS
  - Multi-function Selector - 3 modes of operation: rotary hammer, hammer only mode, rotation only mode
  - Integral Clutch - Helps minimize torque reaction
  - Vario-Lock™ Positioning - Rotates and locks chisel into 12 different positions
- Includes:** Auxiliary Handle, Depth Gauge, Carrying Case

**RH328VCQ** also features

- Quick Change Chuck System - Allows quick change-out between SDS-plus® chuck and optional 3-jaw chuck for use with a wide range of accessories (3-jaw chuck not included)

#### Specifications

Model#	Rating	Amperage	RPM Under Load	BPM Under Load	Impact Energy (ft.-lbs.)	Maximum Capacities (in) Concrete	Maximum Capacities (in) Steel	Maximum Capacities (in) Wood	Maximum Capacities (in) Concrete-Thin Wall Core Bit	Length (in)	Weight (lbs.)
11253VSR	120V	7.2	0-1,300	0-5,800	2.2	1"	1/2"	1" - 1-1/8"	2-5/8"	14.75"	6.4
11255VSR	120V	7.5	0-1,300	0-5,800	2.2	1"	1/2"	1" - 1-1/8"	2-5/8"	17.25"	6.7
RH328VC(VCQ)	120V	8.0	0-900	0-4,000	2.6	1-1/8"	1/2"	1" - 1-1/8"	3-1/8"	12.5" (13.6")	7.7 (7.9)

See pages 46, 50-53, 195-202 for hammer accessories.

Toll free: 877-BOSCH-99



# Hammers and Hammer Drills

## Combination/Chipping/Rotary Hammers

### RH432VCQ – 1-1/4" SDS-plus® Rotary Hammer with Quick Change Chuck System


**NEW**


- Active Vibration Control™ - Vibration reduction in the hammer mechanism and the grip area provides maximum user comfort for extended periods of work 50% LESS vibration (drilling) vs. 11236VS
- Quick Change Chuck System - Allows quick change-out between SDS-plus® chuck and optional 3-jaw chuck for use with a wide range of accessories (3-jaw chuck not included)
- Multi-function Selector - 3 modes of operation: rotary hammer, hammer only mode, rotation only mode
- Integral Clutch - Helps minimize torque reaction
- Vario-Lock™ Positioning - Rotates and locks chisel into 12 different positions
- Variable Speed 3 Finger Trigger - Better operator control and accurate bit starting

**Includes:** Auxiliary Handle, Depth Gauge, Carrying Case

### 11320VS – SDS-plus® Chipping Hammer



- Specially-designed Impact Mechanism - Smooth change between no-load and hammering modes. Superior tool control for easier positioning and precision chiseling
- SDS-plus® Bit System - Tool-free bit changes with auto bit locking, dust protection and maximum impact energy transfer. Eliminates problems associated with proprietary types of steel
- Next-Generation SDS-plus® Bit Holder - For extended lifetime
- Variable-speed Trigger Switch with Recessed Lock-On Button - For exact adjustment of impact force, comfort and less fatigue
- Soft Start - Smooth change from no-load into hammering mode

**Includes:** Auxiliary Handle, Viper Flat Chisel, Tile Chisel, Carrying Case

### 11240 – 1-9/16" SDS-max® Combination Hammer



- SDS-max® Bit System - Tool-free bit changes with automatic bit locking, dust protection and maximum impact energy transfer rate
- "Combination" Dual Mode Selector - 2 modes of operation, rotary hammer and hammer only mode
- Integral Clutch - Helps minimize torque reaction
- Vario-Lock™ Positioning - Rotates and locks chisel into 12 different positions to optimize working angle
- 360° Auxiliary Handle - Provides a wide range of movement along with operator comfort
- Innovative Service Modules - Designed so a qualified service technician can quickly replace the brushes and cord

**Includes:** Auxiliary Handle, Carrying Case

#### Specifications

Model#	Rating	Amperage	RPM Under Load	BPM Under Load	Impact Energy (ft.-lbs.)	Maximum Capacities (in) Concrete	Maximum Capacities (in) Steel	Maximum Capacities (in) Concrete-Core Bit	Maximum Capacities (in) Wood	Length (in)	Weight (lbs.)
RH432VCQ	120V	8.5	0-760	0-3,600	3.7	1-1/4"	1/2"	3-1/2"	1-1/8" - 1-1/4"	15.75"	10.3
11320VS	120V	6.5	N/A	0-3,500	3.2	N/A	N/A	N/A	N/A	15"	7.9
11240	120V	10	400	3,000	5.2	1-9/16"	1/2"	4"	N/A	17.25"	13.2



For more details visit  
[Boschtools.com](http://Boschtools.com)



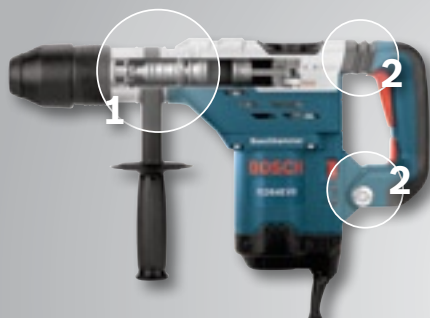
See pages 46, 50-56,  
195-202 for **hammer**  
accessories.



# Hammers and Hammer Drills

## Combination/Rotary Hammers

### The Vibration Levels are Reduced in Two Steps



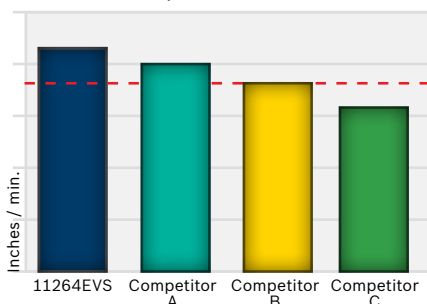
- 1 - Point of origin – the impact mechanism
- 2 - Point of effect – the handle

A longer air cushion between the piston and the striker pin leads to lower pressure (comparable to a longer spring) and thus lower vibration levels – without reducing performance.

The rubber dampening elements at the top and bottom of the main handle further reduce vibration levels.

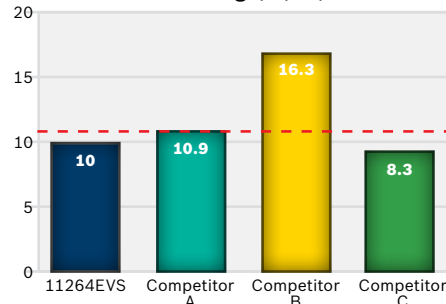
### Competitive Comparison 11264EVS / 11265EVS

#### Drilling Performance 1-1/4" Diameter



20% Faster than Competitor A, B and C

#### Vibration Levels Drilling (m/s<sup>2</sup>)



Up to 30% Less Vibration

### 11264EVS – 1-5/8" SDS-max® Rotary Hammer



- Active Vibration Control™ - Vibration reduction in the hammer mechanism and the grip area provides maximum user comfort
- One-Hand™ SDS-max® - One-hand tool free system makes changing bits easier than ever before
- Constant Response™ Circuitry - Maintains speed under load and overload protection
- Turbo™ Power - Delivers 20% more power in hammer only mode.
- Integral Clutch - Helps minimize torque reaction
- Vario-Lock™ Positioning - Rotates and locks chisel into 12 different positions
- Auto-Max™ Variable Speed Dial - Ensures maximum speed every time the tool is turned on

**Includes:** Auxiliary Handle, Carrying Case

### 11247 – 1-9/16" Spline Combination Hammer



- Spline/Round Hex Bit System - Tool-free bit changes, with automatic bit locking
- "Combination" Dual Mode Selector - 2 modes of operation, rotary hammer and hammer only mode
- Integral Clutch - Helps minimize torque reaction
- Vario-Lock™ Positioning - Rotates and locks chisel into 12 different positions to optimize working angle
- 360° Auxiliary Handle - Provides a wide range of movement along with operator comfort
- Innovative Service Modules - Designed so a qualified service technician can quickly replace the brushes and cord

**Includes:** Auxiliary Handle, Carrying Case

#### Specifications

Model#	Rating	Amperage	No Load RPM	No Load BPM	Impact Energy (ft.-lbs.)	Maximum Capacities (in) Concrete	Maximum Capacities (in) Concrete-Thru Hole Bit	Maximum Capacities (in) Concrete-Core Bit	Optimal Concrete Capacity Range (in)	Length (in)	Weight (lbs.)
11264EVS	120V	13.0	170-340	1,700-2,900	6.8/8.1 (turbo)	1-5/8"	2-9/16"	4-1/8"	1/2 - 1-7/16"	19.25"	14.3
11247	120V	10.0	400	3,000	5.2	1-9/16"	2-1/2"	4"	1/2" - 1-3/8"	17.25"	13.6

# Hammers and Hammer Drills

## Combination/Demolition Hammers

### 11265EVS – 1-5/8" Spline Rotary Hammer


**NEW**


- Active Vibration Control™ - Vibration reduction in the hammer mechanism and the grip area provides maximum user comfort for extended periods of work
- Spline/Round Hex Bit System - Tool-free bit changes
- "Combination" Dual Mode Selector - 2 modes of operation, rotary hammer and hammer only mode
- Constant Response™ Circuitry - Maintains speed under load and overload protection
- Turbo™ Power - Delivers 20% more power in hammer only mode
- Integral Clutch - Helps minimize torque reaction
- Vario-Lock™ Positioning - Rotates and locks chisel into 12 different positions
- Auto-Max™ Variable Speed Dial

**Includes:** Auxiliary Handle, Carrying Case

### 11263EVS – 1-3/4" SDS-max® Rotary Hammer



- SDS-max® Bit System - Tool-free bit changes with automatic bit locking, dust protection and maximum impact energy transfer rate
- "Combination" Dual Mode Selector - 2 modes of operation, rotary hammer and hammer only mode
- Constant Response™ Circuitry - Provides soft-start, maintains constant speed under load, provides overload protection
- Turbo™ Power Feature - Delivers 20% more power in hammer only mode
- Integral Clutch - Helps minimize torque reaction
- Vario-Lock™ Positioning - Rotates and locks chisel into 12 different positions to optimize working angle
- Variable Speed Dial - For accurate bit starting and controlled chipping

**Includes:** Auxiliary Handle, Carrying Case

### 11245EVS – 2" SDS-max® Combination Hammer



- SDS-max® Bit System - Tool-free bit changes with automatic bit locking, dust protection and maximum impact energy transfer rate
- "Combination" Dual Mode Selector - 2 modes of operation, rotary hammer and hammer only mode
- Constant Response™ Circuitry - Provides soft-start, maintains constant speed under load, provides overload protection
- Integral Clutch - Helps minimize torque reaction
- Vario-Lock™ Positioning - Rotates and locks chisel into 12 different positions to optimize working angle
- Service Minder™ Light - Indicates when preventative maintenance is required
- Variable-speed Dial - For accurate bit starting and controlled chipping

**Includes:** Auxiliary Handle, Carrying Case

### 11388 – SDS-max® Demolition Hammer



- SDS-max® Bit System - Tool-free bit changes with automatic bit locking, dust protection and maximum impact energy transfer rate
- Vario-Lock™ Positioning - Rotates and locks chisel into 12 different positions to optimize working angle
- 360° Auxiliary Handle - Provides a wide range of movement along with operator comfort
- Innovative Service Modules - Designed so a qualified service technician can quickly replace the brushes and cord

**Includes:** Auxiliary Handle, Carrying Case

#### Specifications

Model#	Rating	Amperage	No Load RPM	No Load BPM	Impact Energy (ft.-lbs.)	Maximum Capacities (in) Concrete	Maximum Capacities (in) Concrete-Thru Hole Bit	Maximum Capacities (in) Concrete-Core Bit	Optimal Concrete Capacity Range (in)	Length (in)	Weight (lbs.)
11265EVS	120V	13.0	170-340	1,700-2,900	6.8/8.1 (turbo)	1-5/8"	2-9/16"	4-1/8"	1/2" - 1-7/16"	19.25"	14.7
11263EVS	120V	13.5	145-280	1,350-2,800	9.6/11.1 (turbo)	1-3/4"	3-1/8"	6	5/8" - 1-9/16"	21.0"	17.9
11245EVS	120V	14.0	120-250	1,100-2,500	13.3	2"	3-1/8"	6"	3/4"-1-3/4"	23.5"	24.5
11388	120V	10.0	N/A	2,800	5.9	N/A	N/A	N/A	N/A	17.5"	11.6


**BOSCH**

For more details visit  
[Boschtools.com](http://Boschtools.com)



See pages 46, 54-57  
for **hammer** accessories.

# Hammers and Hammer Drills

## Combination/Demolition/Rotary Hammers

### 11321EVS – SDS-max® Demolition Hammer



- Active Vibration Control™ - Vibration reduction in the hammer mechanism and the grip area provides maximum user comfort for extended periods of work
  - SDS-max® Bit System - Tool-free bit changes with automatic bit locking, dust protection and maximum impact energy transfer rate
  - Constant Response™ Circuitry - Provides soft-start, maintains constant speed under load, provides overload protection
  - Vario-Lock™ Positioning - Rotates and locks chisel into 12 different positions to optimize working angle
  - Auto-Max® Dial - Variable speed dial designed to automatically insure the maximum speed and power every time the tool is plugged in
- Includes:** Auxiliary Handle, Carrying Case

### 11316EVS – SDS-max® Demolition Hammer



- SDS-max® Bit System - Tool-free bit changes with automatic bit locking, dust protection and maximum impact energy transfer rate
  - Variable-speed Dial - For controlled chipping applications
  - Constant Response™ Circuitry - Provides soft-start, maintains constant speed under load, provides overload protection
  - Vario-Lock™ Positioning - Rotates and locks chisel into 12 different positions to optimize working angle
  - Service Minder™ Light - Indicates when preventative maintenance is required
  - Padded Rear Handle - Absorbs shock for operator comfort
- Includes:** Auxiliary Handle, Carrying Case

### 11387 – 3/4" Round Hex Demolition Hammer



- Round Hex Tool Holder - Tool-free demolition steel changes, with automatic locking
  - Vario-Lock™ Positioning - Rotates and locks chisel into 12 different positions to optimize working angle
  - 360° Auxiliary Handle - Provides a wide range of movement along with operator comfort
  - Innovative Service Modules - Designed so a qualified service technician can quickly replace the brushes and cord
- Includes:** Auxiliary Handle, Carrying Case

### 11317EVS – 3/4" Round Hex Demolition Hammer



- 3/4" Hex Tool Holder
  - Constant Response™ Circuitry - Provides soft-start, maintains constant speed under load, provides overload protection
  - Variable Speed Dial - For controlled chipping applications
  - Service Minder™ Light - Indicates when preventative maintenance is required
  - Padded Rear Handle - Absorbs shock for operator comfort
  - 360° Auxiliary Handle - Provides a wide range of movement along with operator comfort
- Includes:** Auxiliary Handle, Carrying Case

#### Specifications

Model#	Rating	Amperage	No Load RPM	No Load BPM	Impact Energy (ft.-lbs.)	Length (in)	Weight (lbs.)
11321EVS	120V	13.0	N/A	1,300-2,900	9.6	18.6"	12.8
11316EVS	120V	14.0	N/A	900-1,890	4.4-18.4	22.5"	22.5
11387	120V	10.0	N/A	2,800	5.9	17.5"	12.0
11317EVS	120V	12.8	N/A	850-1,800	4.0-16.5	22.0"	22.0



# Hammers and Hammer Drills

## Breaker Hammer

### 11335K – Jack 35 lb. Breaker Hammer



Case Included



- Impact Force of 34 ft.-lbs and Powerful 1750 W Motor - Fastest removal rate in its class
- Active Vibration Control™ - Vibration reduction in the hammer mechanism and the grip area provides maximum user comfort
- In-Line Design – Ultimate tool balance with multiple grip positions for maximum performance in angled, horizontal, and vertical applications
- Large Main Handle – Increased control and handling
- Well Positioned lock on switch – Eliminates unintentional shut off.
- 360° Articulating Auxiliary Handle – Provides a wide range of movement along with operator comfort
- 2-Way Tool Retainer – Accepts standard 1-1/8" (28mm) hex, air tool steel with retaining collar or Bosch internal locking combo steel

**Includes:** Pointed Chisel (400 mm), Articulating Auxiliary Handle, Carrying Case with Wheels

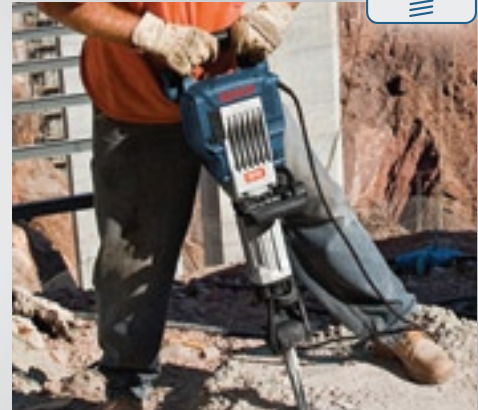
## Nothing Hits Harder. Nothing Lasts Longer.



**Lasts 2 Times Longer than the Closest Competitor**



**Active Vibration Control™ Reduces Vibration by 40%**



**Highest Removal Rate in its Class**

### T1757 – Deluxe Hammer Cart



Pin Up



Pin Down



**NEW**

- Folding Foot Plate – Easily folds out of the way for use as a hand truck
- 8" Foam Tires – Puncture free tires absorb shock over rugged terrain
- Truck Ramp – For easy loading in and out of a truck or van
- Accessory Holders – Securely holds hammer steel in place during transportation
- Quick Release Strap – Durable Nylon material with quick release
- Cord Wrap – Convenience for transportation

#### Specifications

Model#	Rating	Amperage	No Load BPM	Impact Energy (ft.-lbs.)	Length (in.)	Weight (lbs.)
11335K	120V	15.0	1,300	34	30.4"	38



# Hammers and Hammer Drills

## Breaker Hammer

- 11304** – Brute™ Breaker Hammer
- 11304KB** – with Basic Cart
- 11304KD** – with Deluxe Cart



11304



11304KD



T1657



- The Plug-in Anywhere Hammer - Does not need a compressor
- Total Portability - Operates on 115/120V AC/DC, 15 amp outlet or 2500 watt portable generator
- Service Minder™ Brush System - Shuts the Brute™ off when brush replacement, lubrication or preventive maintenance is needed
- Grease Packed Gear Box and Hammer Mechanism - Eliminates uncertainty of job site lubrication
- Shock Mounted Handles - Absorb vibration to reduce operator fatigue



- 11304KB** also features **T1657 Basic Hammer Cart**
- 8" Diameter Semi-pneumatic, Ball Bearing Wheels - Easy rolling over rough job sites
  - Rugged 1" Diameter All Welded Steel Frame, Plus Heavy-duty Rubber Tie-down - For convenient storage and easy transportation
  - 4 Sockets - Holds any 1-1/8" hex collar insert tools



- 11304KD** also features **T1757 Deluxe Hammer Cart**
- Folding Foot Plate – Easily folds out of the way for use as a hand truck
  - 8" Foam Tires – Puncture free tires absorb shock over rugged terrain
  - Truck Ramp – For easy loading in and out of a truck or van
  - Accessory Holders – Securely holds hammer steel in place during transportation
  - Quick Release Strap – Durable Nylon material with quick release
  - Cord Wrap – Convenience for transportation
- Includes:** (2) Star Point Chisels, (2) Narrow Chisels

Hammers and Hammer Drills

## Winner of the *Hunt for the Oldest Brute™* Breaker Hammer Still Being Rented

Manufactured in December, 1978

This Brute entered the rental community in January, 1979. It was rented up until October, 2001 – a period of 21 years and 10 months and an estimated 2,076 times.

It was still operational when it was donated in exchange for a new 11304K. The Rental agency is located in Westminster, CA.



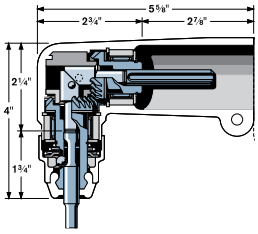
### Specifications

Model#	Rating	Amperage	No Load BPM	Impact Energy (ft.-lbs.)	Max. Weight Capacity (lbs.)	Length (in.)	Weight (lbs.)
<b>11304</b>	115/120V AC/DC	15.0	1,400	43	N/A	29.75"	64
<b>T1657</b>	N/A	N/A	N/A	N/A	250	42.5" height	21.0
<b>T1757</b>	N/A	N/A	N/A	N/A	250	42.25" height	28.9

# Hammers & Hammer Drills

## Chucks/Adapters

### Chucks & Adapters



- Remove side handle to attach
- Tool length increases by 2-3/4"
- Tool length is offset by less than the shank insertion depth into the bit holder
- Impact strength is reduced by approximately 40%

#### 1 618 580 000 SDS-plus® Right Angle Attachment

Angle drill head for effortlessly drilling concrete in hard to reach spots. Pivots through 360° ensuring correct positioning for any application.

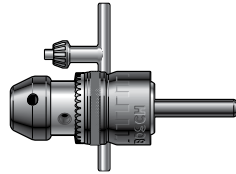
- For SDS-plus® Rotary Hammer Item #s 11224VSR/VSRC, 11250VSR



SDS-plus® is a registered trademark of Robert Bosch GmbH.

#### 1 618 571 014 Chuck With Integral SDS-plus® Shank

- 1/2" capacity chuck with integral SDS-plus® shank.
- Use for straight shank drill bits.
- For wood, metal and fastening.
- Can be used in the drill only mode.
- For all Bosch SDS-plus® Rotary Hammers.



Item #	Description
1 610 508 015	Replacement Dust Boot
CRK005	Replacement Chuck Key

#### 2 610 003 956 HA3JAW Keyless chuck with SDS-plus® Shank

- 1/2" capacity 3 jaw chuck with SDS Plus shank.
- Keyless ratcheting to quickly lock bits in place.
- For use with straight shank drill bits.
- Use metal and wood bits.
- Can be used in the drill only mode.
- Can be used in all SDS Plus rotary hammers.



NEW

Item #
HA3JAW

#### 1 618 572 000 3 Jaw Keyless Chuck Adapter

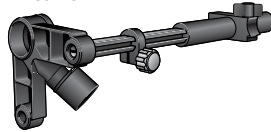
- For 11224VSR



Item #
HA2000

#### 1 618 190 006 Dust Extraction Fixture

- Attaches to tool and vacuum cleaner hose to provide excellent dust collection when drilling in dust-sensitive areas, such as computer rooms and medical facilities
- For use with bits up to 3/4" in diameter (depending on tool's bit capacity) for extracting fine dust
- Built-in depth gauge and adjustable depth limiter
- Easy attachment to compatible tools, auxiliary handles, and vacuum cleaner hoses (see Dust Extraction Compatibility Charts)
- Includes Dust Cover 1 610 591 006
- Does not fit Item # 11239VS



Item #	Description
1 610 591 006	Replacement Dust Cover

#### 2 610 006 290 Anchor Blow Out Bulb

Bosch rubber blow out bulb designed to clean hole before setting anchors.

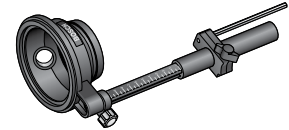
- Palm-sized rubber bulb designed for all hands sizes
- Long nozzle for deeper clean out
- Air intake valve for high volume air flow



Item #	Description
T1854	Anchor Blow Out Bulb

#### 1 618 190 009 Dust Extraction Fixture

- Attaches to tool and vacuum cleaner hose to provide excellent dust collection when drilling in dust-sensitive areas, such as computer rooms and medical facilities
- For use with bits up to 1-9/16" in diameter (depending on tool's bit capacity) for extracting fine dust, wood or metal drilling debris
- Built-in depth gauge and adjustable depth limiter
- Easy attachment to compatible tools, auxiliary handles, and vacuum cleaner hoses (see Dust Extraction Compatibility Charts)
- Includes Dust Cover 1 615 502 004



Item #	Description
1 610 502 004	Replacement Dust Cover

#### 2 607 018 296 SDS-plus® Chipping Adapter

- For SDS-plus® Rotary Hammer

Item #
11225VSR
11225VSRH
11250VSR



#### SDS-max® Rotary Hammer Adapters

Bosch offers adapters to make it easy to move up to SDS-max® while still utilizing your current SDS-plus® and spline accessories.



Item #	Description
HA1030	SDS Max® to SDS plus® adapter
HA1031	SDS Max® to Spline adapter
HA1032	SDS Max® to 3/4" Hex adapter

#### Spline Rotary Hammer Adapters

Use these Bosch adapters with a spline hammer to utilize B taper and SDS-plus® accessories.



Item #	Description
HA1020	Spline drive to SDS-plus® adapter
1 601 030 009	Drift pin (for T1831)

SDS-plus® and SDS-max® are registered trademarks of Robert Bosch GmbH.  
NOTE: Drill bits (or extension + drill bit) in excess of 8" should never exceed 600 RPM.

### Hammer Drill Bits

## Blue Granite™ Hammer Drill Bit

**Fast impact drilling in concrete, stone and masonry**

**Milled U-Flutes with Deep-Cut Spiral**  
Fast dust removal



**Diamond Ground Carbide Tip**  
Precise starts in tile and hard stone



**Robust Head**  
Long service life and impact applications

**ANSI Standard Compliant**

**Softened Shank**  
Aggressive gripping power

### Blue Granite™ Carbide Hammer Drill Bits continued

Item #	Diameter	Usable Length	Overall Length	Quantity
HCBG15B25	7/16"	4"	6"	25
HCBG16	1/2"	4"	6"	1
HCBG1605	1/2"	4"	6"	5
HCBG16B25	1/2"	4"	6"	25
HCBG17	1/2"	8"	10"	1
HCBG18	1/2"	10"	12"	1
HCBG19	9/16"	7-1/2"	10"	1
HCBG20	5/8"	4"	6"	1
HCBG2005	5/8"	4"	6"	5
HCBG20B25	5/8"	4"	6"	25
HCBG21	5/8"	10"	12"	1
HCBG22	3/4"	4"	6"	1
HCBG23	3/4"	10"	12"	1
HCBG24	7/8"	4"	6"	1
HCBG25	7/8"	10"	12"	1
HCBG26	1"	4"	6"	1
HCBG27	1"	10"	12"	1



**BLUE GRANITE**

**HCBG501**



**HCBG700**

### Blue Granite™ Carbide Hammer Drill Bits

Item #	Diameter	Usable Length	Overall Length	Quantity
HCBG01	1/8"	2"	3"	1
HCBG0105	1/8"	2"	3"	5
HCBG01B25	1/8"	2"	3"	25
HCBG02	5/32"	4"	6"	1
HCBG0205	5/32"	4"	6"	5
HCBG02B25	5/32"	4"	6"	25
HCBG03	3/16"	2"	3"	1
HCBG0305	3/16"	2"	3"	5
HCBG03B25	3/16"	2"	3"	25
HCBG04	3/16"	4"	6"	1
HCBG0405	3/16"	4"	6"	5
HCBG04B25	3/16"	4"	6"	25
HCBG05	7/32"	4"	6"	1
HCBG0505	7/32"	4"	6"	5
HCBG05B25	7/32"	4"	6"	25
HCBG06	1/4"	4"	6"	1
HCBG0605	1/4"	4"	6"	5
HCBG06B25	1/4"	4"	6"	25
HCBG07	1/4"	6"	8"	1
HCBG08	1/4"	10"	12"	1
HCBG09	5/16"	4"	6"	1
HCBG0905	5/16"	4"	6"	5
HCBG09B25	5/16"	4"	6"	25
HCBG10	5/16"	7-1/2"	10"	1
HCBG11	5/16"	10"	12"	1
HCBG12	3/8"	4"	6"	1
HCBG1205	3/8"	4"	6"	5
HCBG12B25	3/8"	4"	6"	25
HCBG13	3/8"	8"	10"	1
HCBG14	3/8"	10"	12"	1
HCBG15	7/16"	4"	6"	1
HCBG1505	7/16"	4"	6"	5

### Blue Granite™ Carbide Hammer Drill Bit Sets

Item #	Description	Sizes
HCBG500	5 pc. Industrial Hammer Drill Bit Starter Set	1/8" x 2" x 3"; 3/16" x 4" x 6"; 1/4" x 4" x 6"; 5/16" x 4" x 6"; and 3/8" x 4" x 6"
HCBG501	5 pc. Industrial Hammer Drill Bit Starter Set	5/32" x 2" x 3"; 3/16" x 4" x 6"; 1/4" x 4" x 6"; 5/16" x 4" x 6"; and 3/8" x 4" x 6"
HCBG600T	6 pc. Industrial Hammer Drill Bit Tapcon® Set	3 ea. of 5/32" x 4" x 6" and 3/16" x 4" x 6"
HCBG700	7 pc. Industrial Hammer Drill Bit Set	One 1/8" x 2" x 3", Two 5/32" x 3" x 6", Two 3/16" x 4" x 6", One 1/4" x 4" x 6", One 3/8" x 4" x 6"
HCBG800	8 pc. Industrial Hammer Drill Bit Master Set	One 3/16" x 4" x 6", Two 1/4" x 4" x 6", One 5/16" x 4" x 6", Two 3/8" x 4" x 6", One 1/2" x 4" x 6", and One 5/8" x 4" x 6"

# Masonry/Concrete Drilling

## Hammer Drill Bits

### Concrete Screw Anchoring System

**NEW**

Holds tight tolerances that are critical to anchoring



**Single Flat**  
Prevents bit slippage

**ANSI Compliant ensures correct hole sizes**  
Fast drilling in hard materials

**High Quality Carbide Tip**  
Long life



#### Common Applications:

- Conduit
- Electrical Boxes
- Pipe Straps
- HVAC Strapping
- Sign Fastening
- Window Frames
- Backer Boards

### Concrete Screw Anchoring System

Item #	Description	Quantity
TC100	5/32" x 3-1/2" Concrete Screw Bit	1
TC1005	5/32" x 3-1/2" Drill Bit 5 Pack	5
TC1025	5/32" x 3 1/2 Drill Bit 25 Pack	25
TC200	5/32" x 4-1/2" Concrete Screw Bit	1
TC2005	5/32" x 4-1/2" Drill Bit 5 Pack	5
TC2025	5/32" x 4 1/2 Drill Bit 25 Pack	25
TC300	5/32" x 5-1/2" Concrete Screw Bit	1
TC3005	5/32" x 5-1/2" Drill Bit 5 Pack	5
TC3025	5/32" x 5 1/2 Drill Bit 25 Pack	25
TC400	3/16" x 3-1/2" Concrete Screw Bit	1
TC4005	3/16" x 3-1/2" Drill Bit 5 Pack	5
TC4025	3/16" x 3 1/2 Drill Bit 25 Pack	25

Item #	Description	Quantity
TC500	3/16" x 4-1/2" Concrete Screw Bit	1
TC5005	3/16" x 4-1/2" Drill Bit 5 Pack	5
TC5025	3/16" x 4 1/2 Drill Bit 25 Pack	25
TC600	3/16" x 5-1/2" Concrete Screw Bit	1
TC6005	3/16" x 5 1/2 Drill Bit 5 Pack	5
TC6025	3/16" x 5 1/2 Drill Bit 25 Pack	25
TC700	Masonry Screw Drill Bit Holder	1
TC800	Masonry Screw Drill Bit Sleeve	1
TC900	Masonry Screw Drill Set 9pc	1
TCNS516	Drill Bit Nutsetter 5/16" Hex	1
TCNS14	Drill Bit Nutsetter 1/4" Hex	1
TCSDP2	Concrete Screwdriving Bit P2	1
TCSDP3	Concrete Screwdriving Bit P3	1



TC900



### Multi-Construction™ Bit

**NEW**

Drills practically everything

**Robust Head**  
Long service life, even in impact applications



**Sharp, Ground Cutting Edges**  
Fast drilling in hard materials

**Steep Flute with Ribs**  
Optimal dust removal in any material

**Softened Shank**  
Aggressive gripping power



### Multi-Construction™ Drill Bits

Item #	Diameter	Usable Length	Overall Length	Quantity
MC01	1/8"	2"	3"	1
MC02	5/32"	4"	6"	1
MC02B25	5/32"	4"	6"	25
MC03	3/16"	4"	6"	1
MC03B25	3/16"	4"	6"	25
MC06	1/4"	4"	6"	1
MC06B25	1/4"	4"	6"	25
MC07	1/4"	6"	8"	1
MC09	5/16"	4"	6"	1
MC09B25	5/16"	4"	6"	25
MC10	5/16"	8"	10"	1
MC12	3/8"	4"	6"	1
MC12B25	3/8"	4"	6"	25
MC13	3/8"	8"	10"	1
MC16	1/2"	4"	6"	1
MC17	1/2"	8"	10"	1



**MULTI CONSTRUCTION™**

**MC500**

### Multi-Construction™ Drill Bit Sets

Item #	Description	Sizes
MC500	5 pc. set in plastic case	5/32"x4"x6", 3/16"x4"x6", 1/4"x4"x6", 5/16"x4"x6", 3/8"x4"x6"

### Glass & Tile Bit

**NEW**

Drill faster, last longer

**Carbide Tip**  
Long life in hard materials



**Precision Ground Tip**  
Reduces bit walking

**Reinforced Head**  
Minimizes carbide cracking

#### Common Applications:

- Relief holes for glass cutting
- Bathroom/shower installs
- Towel/shower rods and soap dishes
- Drilling and fastening mirrors
- Setting concrete screws in tile

**3 Flat Shank**  
Provides superior grip

### Glass & Tile Bits

Item #	Diameter
GT100	1/8"
GT200	3/16"
GT300	1/4"
GT400	5/16"
GT500	3/8"
GT600	1/2"
GT700	5/8"
GT800	3/4"
GT900	7/8"
GT1000	1"



**GT3000**

### Glass & Tile Bit Sets

Item #	Description	Sizes
GT2000	4 pc. Glass & Tile Set	1/8", 3/16", 1/4", 5/16"
GT3000	8 pc. Glass & Tile Set	1/8", 3/16", 1/4", 5/16", 3/8", 1/2", 5/8", 3/4"

# Masonry/Concrete Drilling

## SDS-plus® Full Head Carbide

### X5L™ SDS-plus® Full Head Hammer Carbide

**NEW**



#### 5 INNOVATIONS OF THE X5L

##### Full Head Carbide Tip

- Lasts 4X longer than Hilti TE-C3X in rebar\*
- Faster drilling speed and less carbide wear

##### Centric Conical Tip

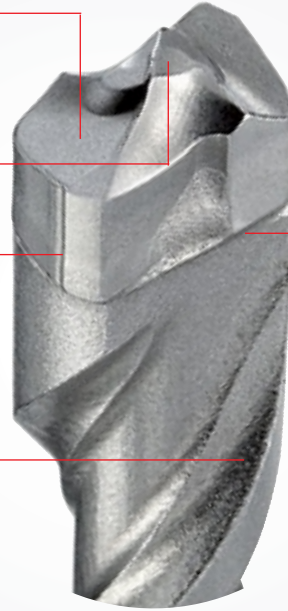
- Guides bit through concrete
- Provides rounder holes

##### Wear Mark

- Alerts user when bit has worn to a level inappropriate for precision anchoring

##### Flute Design

- Fast dust removal
- Runs cooler
- Optimized flute cross section reduces stress



**4X**

Longer Life in Rebar vs. Standard SDS-plus® bit

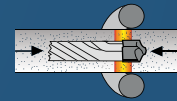


##### Diffusion Bonding Technology

- Stronger carbide bond for a longer lasting bit

##### Diffusion Bonding

Carbide and steel are bonded together at a molecular level.



\*Based on independent head-to-head testing of 1/4" bits performed by Räbel

##### Hole shapes based on tip type



Reuleaux Triangle



2-cutter



4-cutter



X5L™—Centric Conical

The new tip shape provides rounder holes for precision anchoring applications



Item #	Diameter	Useable Length	Overall Length	Quantity	Item #	Diameter	Useable Length	Overall Length	Quantity
HCFC2010	3/16"	2"	4"	1	HCFC2051	5/16"	4"	6-1/2"	1
HCFC2010B25	3/16"	2"	4"	25	HCFC2051B25	5/16"	4"	6"	25
HCFC2011	3/16"	4"	6-1/2"	1	HCFC2054	5/16"	10"	12"	1
HCFC2011B25	3/16"	4"	6-1/2"	25	HCFC2061	3/8"	4"	6-1/2"	1
HCFC2012	3/16"	6"	8-1/2"	1	HCFC2061B25	3/8"	4"	6"	25
HCFC2012B25	3/16"	6"	8-1/2"	25	HCFC2064	3/8"	10"	12"	1
HCFC2014	3/16"	10"	12"	1	HCFC2064B25	3/8"	10"	12"	25
HCFC2014B25	3/16"	10"	12"	25	HCFC2067	3/8"	16"	18"	1
HCFC2040	1/4"	2"	4"	1	HCFC2081	1/2"	4"	6-1/2"	1
HCFC2040B25	1/4"	2"	4"	25	HCFC2081B25	1/2"	4"	6"	25
HCFC2041	1/4"	4"	6-1/2"	1	HCFC2084	1/2"	10"	12"	1
HCFC2041B25	1/4"	4"	6-1/2"	25	HCFC2084B25	1/2"	10"	12"	25
HCFC2042	1/4"	6"	8-1/2"	1	HCFC2087	1/2"	16"	1-8"	1
HCFC2042B25	1/4"	6"	8-1/2"	25	HCFC2102	5/8"	6"	8-1/2"	1
HCFC2044	1/4"	10"	12"	1	HCFC2103	5/8"	10"	12"	1
HCFC2044B25	1/4"	10"	12"	25	HCFC2104	5/8"	16"	18"	1

# Masonry/Concrete Drilling

## SDS-plus® Drill Bits

### SDS-plus® Hammer Carbide



#### SDS-plus® Wild-Bore™ with Speed-X Technology

Item #	Diameter	Usable Length	Overall Length	Quantity
HC2224	3/4"	8"	10"	1
HC2227	3/4"	16"	18"	1
HC2244	7/8"	8"	10"	1
HC2247	7/8"	16"	18"	1
HC2263	1"	8"	10"	1
HC2267	1"	16"	18"	1
HC2283	1-1/8"	8"	10"	1
HC2287	1-1/8"	16"	18"	1



#### SDS-plus® S4L® Rotary Hammer Bits

15% more life time in concrete (compared to the last version of S4)

- Optimized brazing and hardening process for long life in reinforced concrete
- Optimized flute design to reduce stress and make the bit run cooler
- 4-flute design for fast dust removal
- Centric tip for optimal hole geometry



Item #	Diameter	Usable Length	Overall Length	Quantity
HC2000	5/32"	2"	4"	1
HC2001	5/32"	4"	6"	1
HC2001B5	5/32"	4"	6"	5
HC2001B25	5/32"	4"	6"	25
HC2010	3/16"	2"	4"	1
HC2010B5	3/16"	2"	4"	5
HC2010B25	3/16"	2"	4"	25
HC2011	3/16"	4"	6"	1
HC2011B5	3/16"	4"	6"	5
HC2011B25	3/16"	4"	6"	25
HC2012	3/16"	6"	8"	1
HC2012B5	3/16"	6"	8"	5
HC2012B25	3/16"	6"	8"	25
HC2013	3/16"	8"	10"	1
HC2013B5	3/16"	8"	10"	5
HC2013B25	3/16"	8"	10"	25
HC2014	3/16"	10"	12"	1
HC2014B5	3/16"	10"	12"	5
HC2014B25	3/16"	10"	12"	25
HC2015	3/16"	12"	14"	1
HC2015B5	3/16"	12"	14"	5
HC2015B25	3/16"	12"	14"	25
HC2031	7/32"	4"	6"	1
HC2031B5	7/32"	4"	6"	5
HC2031B25	7/32"	4"	6"	25
HC2032	7/32"	6"	8"	1
HC2032B5	7/32"	6"	8"	5
HC2032B25	7/32"	6"	8"	25
HC2034	7/32"	10"	12"	1
HC2034B5	7/32"	10"	12"	5
HC2034B25	7/32"	10"	12"	25
HC2040	1/4"	2"	4"	1
HC2040B5	1/4"	2"	4"	5
HC2040B25	1/4"	2"	4"	25
HC2041	1/4"	4"	6"	1
HC2041B5	1/4"	4"	6"	5
HC2041B25	1/4"	4"	6"	25
HC2042	1/4"	6"	8"	1
HC2042B5	1/4"	6"	8"	5
HC2042B25	1/4"	6"	8"	25
HC2043	1/4"	8"	10"	1

### SDS-plus® S4L® Rotary Hammer Bits continued

Item #	Diameter	Usable Length	Overall Length	Quantity
HC2045	1/4"	12"	14"	1
HC2051	5/16"	4"	6"	1
HC2051B5	5/16"	4"	6"	5
HC2051B25	5/16"	4"	6"	25
HC2054	5/16"	10"	12"	1
HC2061	3/8"	4"	6"	1
HC2061B5	3/8"	4"	6"	5
HC2061B25	3/8"	4"	6"	25
HC2064	3/8"	10"	12"	1
HC2064B5	3/8"	10"	12"	5
HC2064B25	3/8"	10"	12"	25
HC2067	3/8"	16"	18"	1
HC2068	3/8"	22"	24"	1
HC2071	7/16"	4"	6"	1
HC2074	7/16"	10"	12"	1
HC2081	1/2"	4"	6"	1
HC2081B5	1/2"	4"	6"	5
HC2081B25	1/2"	4"	6"	25
HC2084	1/2"	10"	12"	1
HC2084B5	1/2"	10"	12"	5
HC2084B25	1/2"	10"	12"	25
HC2087	1/2"	16"	18"	1
HC2088	1/2"	22"	24"	1
HC2091	9/16"	4"	6"	1
HC2094	9/16"	10"	12"	1
HC2097	9/16"	16"	18"	1
HC2098	9/16"	23"	28"	1
HC2099	9/16"	31"	36"	1
HC2102	5/8"	6"	8"	1
HC2102B5	5/8"	6"	8"	5
HC2102B25	5/8"	6"	8"	25
HC2104	5/8"	10"	12"	1
HC2107	5/8"	16"	18"	1
HC2108	5/8"	22"	24"	1
HC2112	11/16"	6"	8"	1
HC2122	3/4"	6"	8"	1
HC2124	3/4"	10"	12"	1
HC2127	3/4"	16"	18"	1
HC2128	3/4"	22"	24"	1
HC2137	27/32"	6"	8"	1
HC2142	7/8"	6"	8"	1
HC2144	7/8"	10"	12"	1
HC2147	7/8"	16"	18"	1
HC2163	1"	8"	10"	1
HC2167	1"	16"	18"	1



HCK001



HCK005

Item #	Description	Includes
HCK001	7pc Set	One 3/16" x 2" x 4", One 1/4" x 2" x 4", Two 1/4" x 4" x 6", One 5/16" x 4" x 6", One 3/8" x 4" x 6", and One 1/2" x 4" x 6"
HCK005	5pc Set	One 3/16" x 4" x 6", One 1/4" x 2" x 4", One 1/4" x 4" x 6", One 3/8" x 4" x 6", and One 1/2" x 4" x 6"

# Masonry/Concrete Drilling

## SDS-plus® Tapcon®/Rebar Cutters

### SDS-plus® Hammer Carbide



#### SDS-plus® S4L® Tapcon® Hex Rotary Hammer Bits

For use with Tapcon® / Condrive systems. Hex drive on bit fits into driver sleeve.

Item #	Diameter	Usable Length	Overall Length	Quantity
HC2301	5/32"	3"	6"	1
HC2301B25	5/32"	3"	6"	25
HC2302	5/32"	4"	7"	1
HC2302B25	5/32"	4"	7"	25
HC2310	3/16"	2"	5"	1
HC2310B25	3/16"	2"	5"	25
HC2311	3/16"	3"	6"	1
HC2311B25	3/16"	3"	6"	25
HC2312	3/16"	4"	7"	1
HC2312B25	3/16"	4"	7"	25

#### Tapcon® Anchor Drive Installation Kit

SDS-plus® shank bits for use with Tapcon® / Condrive systems. Hex drive on bit fits into driver sleeve.

- 1/4" hex shoulder for drive sleeve used to set masonry screws

Item #	Description
HC2309	9 pc. anchor drive installation kit—5/32" x 7" and 3/16" x 7" Tapcon® hex bits, #2 & #3 Phillips® insert bits, bit holder, 5-3/4" sleeve, 1/4" & 5/16" sockets and Allen® wrench

Tapcon® is a registered trademark of Illinois Tool Works.

SDS-plus® is a registered trademark of Robert Bosch GmbH.

Allen® is a registered trademark of Industrial Fasteners Inc.

Phillips® is a registered trademark of Phillips Screw Co.

NOTE: Drill bits (or extension + drill bit) in excess of 8" should never exceed 600 RPM.

## Rebar Cutter

**NEW**

### Fast, sure drilling through rebar

#### SDS-plus® Shank

Eliminates need for a separate drill



#### High quality carbide

For long drilling life

#### Step Spiral Flute

Removes debris fast

#### Relief Hole

Dissipates heat and allows for slug removal



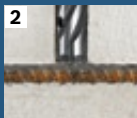
#### Cutting Rebar

1



**Step 1:**  
Drill with SDS-plus® carbide bit and remove after contact with rebar

2



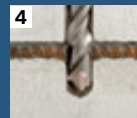
**Step 2:**  
Replace bit with rebar cutter and switch to rotary mode

3



**Step 3:**  
Cut through rebar and remove after contact with concrete

4



**Step 4:**  
Switch back to hammer carbide bit to continue drilling

Model	Diameter	Length	Quantity
RC2064	3/8"	12"	1
RC2084	1/2"	12"	1
RC2094	9/16"	12"	1
RC2104	5/8"	12"	1
RC2124	3/4"	12"	1

Model	Diameter	Length	Quantity
RC2144	7/8"	12"	1
RC2164	1"	12"	1
RC2168	1-1/8"	12"	1
RC2172	1-1/4"	12"	1
RC2176	1-1/2"	12"	1



**BOSCH**

For more details visit  
[Boschtools.com](http://Boschtools.com)



# Masonry/Concrete Drilling

## SDS-plus® Core Bits/Chisels

### SDS-plus® Core Bits



#### SDS-plus® Rotary Hammer Core Bits

Bosch SDS-plus® rotary hammer core bits are designed for core drilling with smaller hammers with a core body length of 4-1/8" and a usable cutting depth of 3"

Core Bit Item #	Bit Diameter	Center Pin Item #	Guide Plate Item #	Shank Item #
T3900	1"	N/A	N/A	4-1/8" shank length T3917
T3901	1-1/8"	N/A	N/A	or
T3902	1-1/4"	T3925	T3930	11-7/8" shank length T3918
T3903	1-3/8"	T3925	T3931	
T3904	1-1/2"	T3925	T3932	
T3905	1-3/4"	T3926	T3933	
T3906	2"	T3926	T3934	4-1/8" shank length T3919
T3907	2-1/2"	T3926	T3935	or
T3908	3"	T3926	T3936	11-7/8" shank length T3920
T3909	3-1/2"	T3926	T3937	
T3910	4"	T3926	T3938	



#### Speed-Core™ Thin Core Bits

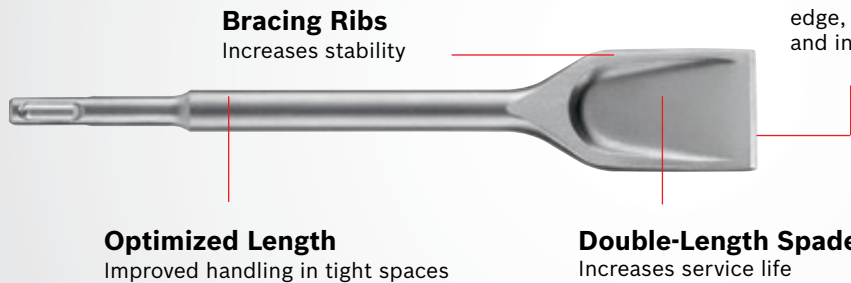
##### Core Bit Assembly

- (1) Screw core bit onto shank
- (2) Centering pin in hole
- (3) Attach guide plate

Hammers and Hammer Drills

### Self-Sharpening Chisels

#### Works longer, faster and sharper



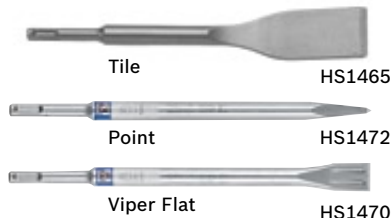
#### Flat Spade Design

Creates 'self-sharpening' edge, eliminating downtime and increasing removal rate



**30%**  
Higher Removal Rate

### SDS-plus® Hammer Steel



Item #	Description
HS1415	10" point
HS1420	3/4" x 10" chisel
HS1425	1-1/2" x 10" wide chisel <i>self-sharpening</i>
HS1427	2-1/2" x 10" wide chisel <i>self-sharpening</i>
HS1430	1/4" x 7" wood chisel
HS1435	1/2" x 7" wood chisel
HS1440	3/4" x 7" wood chisel
HS1445	1" x 7" wood chisel
HS1450	1-1/4" x 7" wood chisel
HS1465	1-1/2" x 10" Tile chisel
HS1470	3/4" x 10" Viper flat chisel ( <i>long life</i> )
HS1472	10" point ( <i>long life</i> )
HS1475	10" Gouging chisel
HS1480	8" Carbide tipped point
HS1485	1-1/2" x 5-3/4" Stubby scaling chisel
HS1490	5-3/4" Stubby point
HS1495	3/4" x 5-3/4" Stubby flat chisel

#### SDS-plus® Hammer Steel

Bosch offers a full assortment of SDS-plus® hammer steel points and chisels.

- HS1465 is the new SDS-plus® tile chisel which allows removal of tiles at a faster rate and with much less effort. Bosch's new tile chisel removes material up to 40% quicker than conventional tile chisels. Ideal for smaller grout joints and specially shaped for prying and removing tiles in one piece
- HS1472 is the new long life SDS-plus® pointed chisel. 30% longer service life and 15% higher material removal
- HS1470 is the new long life SDS-plus® Viper flat chisel featuring an innovative cutting chisel that further disperses the energy of each impact. 30% longer service life and 15% higher material removal

SDS-plus® is a registered trademark of Robert Bosch GmbH.  
NOTE: Drill bits (or extension + drill bit) in excess of 8" should never exceed 600 RPM.

# Masonry/Concrete Drilling

## SDS-max® Drill Bits

### Speed-X™

NEW

### Fast, faster, SPEED-X

**Centric Tip**  
Guides bit through hard  
and reinforced concrete

**Angled Dust Channels**  
Reduced heat build-up  
resulting in longer life

**Inclined Side Cutters**  
Aggressive edge for faster cutting



**Wear Mark**  
Identifies when bit has worn to level  
inappropriate for precision anchoring

**Long Pitch Spiral**  
Increased speed and reduced vibration



## SDS-max® Hammer Carbide



### SDS-max® Rotary Hammer Bits with Speed-X Technology

Bosch carbide rotary hammer bits feature tips that stay sharper longer and deliver more holes within their ANSI specification than competitors' bits.

- Manufactured to ANSI standards.
- SDS-max® rotary hammer bits not only fit Bosch SDS-max® hammers, but also competitive SDS-max® drive hammers and Hilti hammers using TE-Y and TE-FY shanks



Item #	Diameter	Usable Length	Overall Length
HC5005*†	3/8"	8"	13"
HC5010*†	1/2"	8"	13"
HC5012*†	1/2"	11"	16"
HC5011*†	1/2"	16"	21"
HC5013*†	1/2"	24"	29"
HC5015*†	9/16"	8"	13"
HC5016*†	9/16"	16"	21"
HC5017*†	9/16"	24"	29"
HC5020*	5/8"	8"	13"
HC5021*	5/8"	16"	21"
HC5024*	5/8"	24"	29"
HC5023*	5/8"	31"	36"
HC5026*	11/16"	16"	21"
HC5030*	3/4"	8"	13"
HC5031*	3/4"	16"	21"
HC5034*	3/4"	24"	29"
HC5033*	3/4"	31"	36"
HC5036*	13/16"	16"	21"
HC5040*	7/8"	8"	13"
HC5041*	7/8"	16"	21"
HC5044*	7/8"	24"	29"
HC5043*	7/8"	31"	36"
HC5050*	1"	8"	13"
HC5051*	1"	16"	21"
HC5054*	1"	24"	29"
HC5053*	1"	31"	36"
HC5060*	1-1/8"	8"	13"

\*Available May 2010

†2 Cutter

### SDS-max® Rotary Hammer Bits with Speed-X Technology continued

Item #	Diameter	Usable Length	Overall Length
HC5061*	1-1/8"	16"	21"
HC5062*	1-1/8"	24"	29"
HC5063*	1-1/8"	31"	36"
HC5070*	1-1/4"	8"	13"
HC5071*	1-1/4"	16"	21"
HC5072*	1-1/4"	24"	29"
HC5073*	1-1/4"	31"	36"
HC5081*	1-3/8"	16"	21"
HC5082*	1-3/8"	24"	29"
HC5083*	1-3/8"	31"	36"
HC5091*	1-1/2"	16"	21"
HC5092*	1-1/2"	24"	29"
HC5093*	1-1/2"	31"	36"
HC5098*	1-3/4"	16"	21"
HC5099*	2"	16"	21"



### SDS-max® Thru-hole Rotary Hammer Bits

One-piece thru-hole bits are designed for fast working without the need to change shanks. The all-in-one core with SDS-max® shank transmits power directly to the end of the bit. Additionally, thru-hole bits are economical due to their long life.



Item #	Diameter	Usable Length	Overall Length
HC6501	1-3/4"	18"	24"
HC6511	2-1/8"	18"	24"
HC6521	2-1/2"	18"	24"
HC6531	3-1/8"	18"	24"

SDS-plus® and SDS-max® are registered trademarks of Robert Bosch GmbH.

NOTE: Drill bits (or extension + drill bit) in excess of 8" should never exceed 600 RPM.


**BOSCH**

 For more details visit  
[Boschtools.com](http://Boschtools.com)

# Masonry/Concrete Drilling

## SDS-max® Thru-Hole/Core Bits

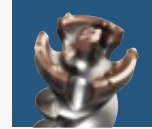
### Thru-Hole Bit

Drill all the way through without stopping



**Aggressive Tip**  
Fast break-through and large chip removal

**Special Flute**  
Faster chip removal



### SDS-max® Core Bits

#### Core Bits with Wave Design

Larger, cleaner holes up to 6" in diameter



**Carbide-tipped Centering Bit**  
(Item# HC88)

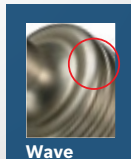


**All-in-One Core**  
Transmits power directly to the end of the bit



**Asymmetrical Carbide Teeth**  
Faster cutting, longer life

**Wave Design**  
Transfers energy to bit more effectively for up to 40% better drilling



#### SDS-max® Rotary Hammer Core Bits

Bosch SDS-max® rotary hammer core bits are carbide tipped with an integral shank for better power transmission. Maximum core size is 2-5/8" deep.

Item #	Bit Diameter	Usable Length	Overall Length
HC8501	1-3/4"	7"	12"
HC8506	1-3/4"	17"	22"
HC8510	2"	7"	12"
HC8515	2"	17"	22"
HC8521	2-5/8"	7"	12"
HC8526	2-5/8"	17"	22"
HC8530	3"	7"	12"
HC8531	3-1/4"	7"	12"
HC8536	3-1/4"	17"	22"
HC8540	3-9/16"	7"	12"
HC8545	3-9/16"	17"	22"
HC8550	4"	7"	12"
HC8555	4"	12"	17"
HC8575	5"	17"	22"
HC8595	6"	17"	22"
HC88 Centering Bit & Drif Pin	—	—	5-5/16"

### SDS-max® R-Tec

#### How Does R-Tec Work?

The next generation of SDS-max® chisels and points features the innovation you've come to expect from Bosch, the professional's choice in concrete drilling and demolition. Reflection technology is the latest innovation in demolition steel, so Bosch has incorporated its new R-Tec reflection point into each chisel or point. With each beat of the hammer, energy is dispersed. Our new R-Tec reflection element reflects the hammer's energy back into the work material, increasing the rate of removal by 15%. And the R-Tec chisel features a unique cutting head with extra wedges for increased breakout. Bosch SDS-max® R-Tec chisels and points produce faster results in less time and help increase overall jobsite productivity and profitability.



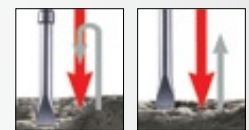
**Star Point Tip**  
Self Sharpening, less binding

**Bosch Marking**

**SDS-max® Shank**

**High-quality Hardened Steel**  
Can be re-sharpened, re-forged and provides long service life.

**Innovative Reflection Element**  
Increases material removal rate by up to 15%.



R-Tec Chisel

Conventional Chisel



The reflection element reflects the energy of the return shock and converts it into new impact energy.

# Masonry/Concrete Drilling

## SDS-max® Chisels Bits/Spline Drill Bits

### SDS-max® Hammer Carbide



#### SDS-max® Hammer Steel

Bosch offers a full assortment of SDS-max® hammer steel points and chisels.



Tamper Plate

Item #	Description	Size	Quantity
HS1903	R-Tec flat chisel	1" x 16"	1
HS1903B10	R-Tec flat chisel	1" x 16"	10
HS1934	R-Tec Star Point chisel <i>self-sharpening</i>	16"	1
HS1934B10	R-Tec Star Point chisel <i>self-sharpening</i>	16"	10
HS1906	Asphalt cutter	5" x 15"	1
HS1909	Bushing tool, one piece	16 tooth head, 1-3/4" square x 9-1/4"	1
HS1910	Scaling chisel	3" x 12"	1
HS1911	Flat chisel	1" x 12"	1
HS1911B20	Flat chisel	1" x 12"	20
HS1912	Flat chisel	1" x 18"	1
HS1912B10	Flat chisel	1" x 18"	10
HS1913	Bull point	12"	1
HS1913B20	Bull point	12"	20
HS1914	Bull point	18"	1
HS1914B10	Bull point	18"	10
HS1915	Tile chisel	2" x 12"	1
HS1916	Scaling chisel	1-1/2" x 12"	1
HS1917	Scaling chisel <i>self-sharpening</i>	2" x 14"	1
HS1918	Floor scraper	6" x 25"	1
HS1920	Seam tool	1-1/8" x 15"	1
HS1921	Slotting tool	1-1/8" x 15"	1
HS1922	Clay spade	4-1/2" x 17"	1
HS1924	Ground rod driver	5/8" & 3/4" rods	1
HS1926	Round spade	5-3/8" x 16"	1
HS1927	Tamper plate shank	12"	1
HS1928	Winged channel chisel	1" x 15"	1
HS1929	Gouge	1" x 12"	1
HS1828	Tamper plate	5" x 5"	1

SDS-max® is a registered trademark of Robert Bosch GmbH.

### Spline Hammer Carbide



#### Spline Wild-Bore™ Rotary Hammer Bits with Speed-X™ Technology

Bosch spline rotary hammer bits are carbide tipped and fit Bosch as well as other spline hammers.

Item #	Bit Diameter	Usable Length	Overall Length
HC4501**	3/8"	8"	13"
HC4511**	1/2"	8"	13"
HC4512**	1/2"	16"	21"
HC4513**	1/2"	24"	29"
HC4516**	9/16"	16"	12"
HC4021*	5/8"	8"	13"
HC4022*	5/8"	16"	21"
HC4023*	5/8"	24"	29"
HC4024*	5/8"	31"	36"
HC4031*	3/4"	8"	13"
HC4032*	3/4"	16"	21"
HC4033*	3/4"	24"	29"
HC4034*	3/4"	31"	36"
HC4040*	7/8"	8"	13"
HC4041*	7/8"	16"	21"
HC4042*	7/8"	24"	29"
HC4043*	7/8"	31"	36"
HC4050*	1"	8"	13"
HC4051*	1"	16"	21"
HC4052*	1"	24"	29"
HC4053*	1"	31"	36"

#### Spline Wild-Bore™ Rotary Hammer Bits with Speed-X Technology continued

Item #	Bit Diameter	Usable Length	Overall Length
HC4060*	1-1/8"	8"	13"
HC4061*	1-1/8"	16"	21"
HC4062*	1-1/8"	24"	29"
HC4063*	1-1/8"	31"	36"
HC4070*	1-1/4"	8"	13"
HC4071*	1-1/4"	16"	21"
HC4072*	1-1/4"	24"	29"
HC4073*	1-1/4"	31"	36"
HC4081*	1-3/8"	16"	21"
HC4082*	1-3/8"	24"	29"
HC4083*	1-3/8"	31"	36"
HC4091*	1-1/2"	16"	21"
HC4092*	1-1/2"	24"	29"
HC4093*	1-1/2"	31"	36"

\*Available May 2010

\*\*2 Cutter



**BOSCH**

For more details visit  
[Boschtools.com](http://Boschtools.com)



# Masonry/Concrete Drilling

## Spline Core Bits/Chisels/Hex Chisels

### Spline Core Bits



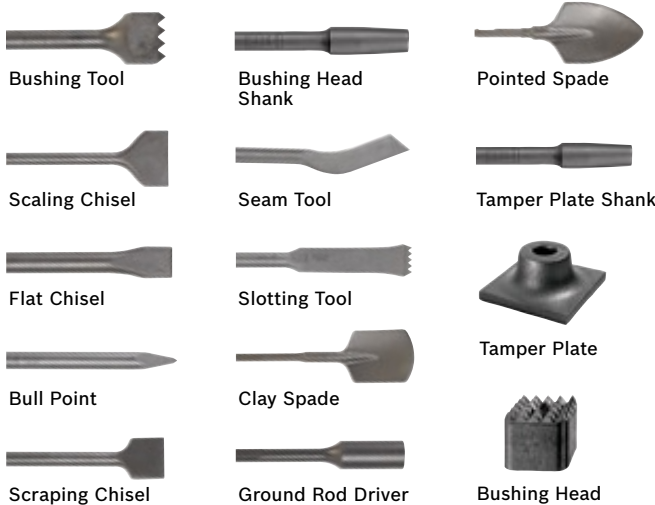
#### Spline Rotary Hammer Core Bits

Bosch spline rotary hammer core bits feature an integral shank for better power transmission.

- Maximum core size of 2-5/8" deep (dimensions are nominal)

Item #	Bit Diameter	Usable Length	Overall Length
HC8000	1-1/2"	7"	12"
HC8005	1-1/2"	17"	22"
HC8010	2"	7"	12"
HC8015	2"	17"	22"
HC8020	2-1/2"	7"	12"
HC8025	2-1/2"	17"	22"
HC8030	3-1/8"	7"	12"
HC8035	3-1/8"	17"	22"
HC8040	3-9/16"	7"	12"
HC8045	3-9/16"	17"	22"
HC8050	4"	7"	12"
HC8055	4"	17"	22"
HC8070	5"	7"	12"
HC8075	5"	17"	22"
HC89 Centering Tip	—	—	4-3/4"

### Round Hex/Spline Hammer Steel



Bosch offers a full assortment of round hex/spline hammer steel points and chisels.

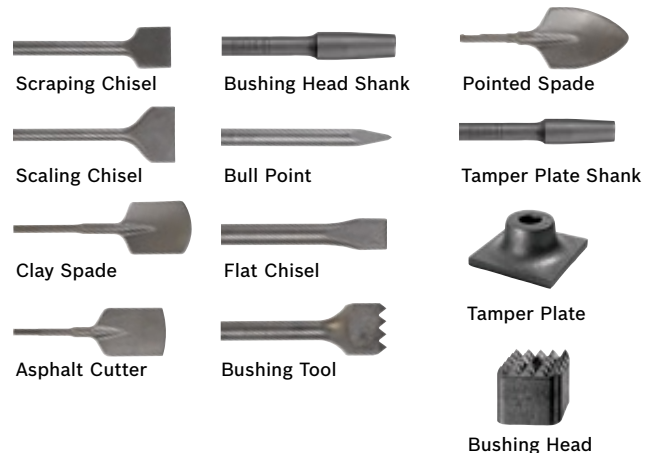


Item #	Description	Size	Quantity
HS1809	Bushing tool one piece	16 tooth head, 1-3/4" square x 9-1/4"	1
HS1809B10	Bushing tool one piece	16 tooth head, 1-3/4" square x 9-1/4"	10
HS1810	Scaling chisel	3" x 12"	1
HS1810B10	Scaling chisel	3" x 12"	10
HS1811	Flat chisel	1" x 12"	1
HS1811B20	Flat chisel	1" x 12"	20
HS1812	Flat chisel	1" x 18"	1
HS1812B10	Flat chisel	1" x 18"	10
HS1813	Bull point	12"	1

### Round Hex/Spline Hammer Steel continued

Item #	Description	Size	Quantity
HS1813B20	Bull point	12"	20
HS1814	Bull point	18"	1
HS1814B10	Bull point	18"	10
HS1815	Scraping chisel	2" x 12"	1
HS1816	Scaling chisel	1-1/2" x 12"	1
HS1817	Scaling chisel	2" x 12"	1
HS1817B10	Scaling chisel	2" x 12"	10
HS1521	Bushing head	16 tooth head, 1-3/4" square	1
HS1818	Bushing head shank	12"	1
HS1820	Seam tool	1-1/8" x 15"	1
HS1821	Slotting tool	1-1/8" x 15"	1
HS1822	Clay spade	4-1/2" x 16"	1
HS1822B3	Clay spade	4-1/2" x 16"	3
HS1824	Ground rod driver	5/8" & 3/4" rods	1
HS1826	Pointed spade	4-1/2" x 16"	1
HS1827	Tamper plate shank	12"	1
HS1828	Tamper plate	5" x 5"	1

### 3/4" Hex Hammer Steel



Bosch offers a full assortment of 3/4" hex hammer steel points and chisels.



Item #	Description	Size	Quantity
HS1502	Scraping chisel	2" x 12"	1
HS1503	Scaling chisel	3" x 12"	1
HS1503B10	Scaling chisel	3" x 12"	10
HS1504	Clay spade	4-1/2" x 17"	1
HS1506	Asphalt cutter	5" x 15"	1
HS1521	Bushing head	16 tooth head, 1-3/4" square	1
HS1508	Bushing head shank	12"	1
HS1515	Bull point	12"	1
HS1515B20	Bull point	12"	20
HS1516	Bull point	18"	1
HS1516B10	Bull point	18"	10
HS1517	Flat chisel	1" x 12"	1
HS1517B20	Flat chisel	1" x 12"	20
HS1518	Flat chisel	1" x 18"	1
HS1518B10	Flat chisel	1" x 18"	10
HS1520	Bushing tool one piece	16 tooth head, 1-3/4" square x 9-1/4"	1
HS1520B10	Bushing tool one piece	16 tooth head, 1-3/4" square x 9-1/4"	10
HS1524	Ground rod driver	5/8" & 3/4" rods	1
HS1526	Pointed spade	4-1/2" x 16"	1
HS1527	Tamper plate shank	12"	1
HS1828	Tamper plate	5" x 5"	1

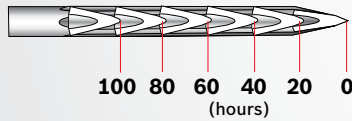
### Star-Point Chisel

Self-sharpening eliminates downtime and increases removal rate



#### Star-Point Shape

Creates 'self-sharpening' edge, eliminating downtime and increasing removal rate



Tip Shape Over Worklife



Cross section of Star-pointed Chisel

# 30%

## Higher Removal Rate vs. Standard Chisel

Hammers and Hammer Drills

### Hex Collar Steel



Bosch offers a full assortment of Brute™ / 1-1/8" hex hammer steel points and chisels.



Item #	Description	Overall Length	Quantity
HS2124	Tamper plate	6" x 6"	1
HS2125	Tamper plate	8" x 8"	1
HS2126	Tent stake driver	5-1/2"	1
HS2861	Star Point <i>self-sharpening</i>	16"	1
HS2161	Moil point	20"	1
HS2161B5	Moil point	20"	5
HS2863	Flat chisel	16"	1
HS2163	Narrow chisel	20"	1
HS2163B5	Narrow chisel	20"	5
HS2164	3" chisel	20"	1
HS2164B5	3" chisel	20"	5
HS2166	Superkut chisel	20-1/2"	1
HS2167	5" asphalt cutter	19"	1
HS2167B3	5" asphalt cutter	19"	3
HS2168	3" digging chisel	22-1/2"	1
HS2169	5-3/8" clay spade	21"	1
HS2169B3	5-3/8" clay spade	21"	3
HS2170	Frost wedge	24-1/2"	1
HS2171	Spike / pin driver	14-1/2"	1
HS2172	Ground rod driver	15-1/2"	1
HS2173	Tamper shank	15-1/2"	1

### Air Tool Steel



Bosch offers a full assortment of air tool steel points and chisels. For use with pneumatic hammers only.



Item #	Description	Overall Length	Shank	Quantity
HS2260	Moil point	18"	7/8" hex	1
HS2261	Moil point	14"	7/8" hex	1
HS2262	Narrow chisel	18"	7/8" hex	1
HS2263	Narrow chisel	14"	7/8" hex	1
HS2264	3" chisel	20-1/2"	7/8" hex	1
HS2267	5" asphalt cutter	17-1/2"	7/8" hex	1
HS2269	5-1/2" clay spade	20"	7/8" hex	1
HS2360	Moil point	18"	1" hex	1
HS2361	Moil point	14"	1" hex	1
HS2362	Narrow chisel	18"	1" hex	1
HS2363	Narrow chisel	14"	1" hex	1
HS2364	3" chisel	20-1/2"	1" hex	1
HS2367	5" asphalt cutter	17-1/2"	1" hex	1
HS2369	5-1/2" clay spade	20"	1" hex	1
HS2460	Moil point	18"	1-1/4" hex	1
HS2461	Moil point	14"	1-1/4" hex	1
HS2462	Narrow chisel	18"	1-1/4" hex	1
HS2463	Narrow chisel	14"	1-1/4" hex	1
HS2464	3" chisel	20-1/2"	1-1/4" hex	1
HS2467	5" asphalt cutter	17-1/2"	1-1/4" hex	1
HS2469	5-1/2" clay spade	20"	1-1/4" hex	1