



THE FLUID FLOW EXPERTS

Celebrating 39 Years!



of Family Owned, American Made Products

TABLE OF CONTENTS

Ball Valves

| | |
|---|-----|
| <i>Bolted Polypropylene Ball Valves</i> | |
| 4 Bolt | 4-5 |
| 6 Bolt | 4-5 |
| 8 Bolt | 4-5 |
| Compact | 4-5 |
| Angle Valve | 6 |
| Single Union | 6 |
| HM | 6 |
| True Union | 7 |
| Dry Proppet | 8 |

Couplers

| | |
|-------------------------------|-------|
| GatorLock | 10 |
| Camlock | 11-12 |
| Plastic Handle Camlocks | 13 |
| Angled Camlocks | 14 |
| Replacement Gaskets | 14 |
| T-Bolt Clamps | 14 |

Schedule 80 - Heavy Duty

| | |
|----------------------------|----|
| Straight Adapter | 16 |
| Straight Hose Mender | 16 |
| Nipple | 16 |
| Reducing Coupling | 16 |
| Reducing Nipple | 16 |
| Elbow | 17 |
| Coupling | 17 |
| Street Elbow | 17 |
| Tee w Gauge Port | 18 |
| Tee | 18 |
| Plug | 18 |
| Pipe Caps | 18 |
| Steel Hose Adapters | 18 |
| Pin Lug Couplers | 18 |

Fittings - Nylon & Polypropylene

| | |
|----------------------------|-------|
| Hose Fittings | 20-23 |
| Pipe Fittings | 24-26 |
| Garden Hose Fittings | 27-30 |
| Nozzle Fittings | 31-32 |

Bulkhead Fittings

Bolted Tank Fittings

Strainers

Spray Components

| | |
|---------------------------|-------|
| Gauges | 37 |
| Boom Clamps | 37 |
| Nozzle Bodies | 38-39 |
| Winged Bayonet Caps | 40 |
| Spray Tips Filters | 40 |
| Solenoid Valves | 41 |
| Wiring Harnesses | 41 |
| Suction Filter | 42 |
| Hose Drop | 42 |
| Spray Wands | 42 |

Rope Wick

| | |
|----------------------------|----|
| String Wing & Mounts | 43 |
| Rope Wick Fittings | 44 |
| Rope Wick Kits | 44 |
| Weed Thief | 44 |



Ball Valves

Selection

Green Leaf valves are available in sizes ranging from 1/2" to 4".

Quality

Our primary resin is a high strength custom blended glass filled polypropylene.

Location

Green Leaf takes pride in the fact that most of our valves are made on site at our Indiana manufacturing location.

Experience

We have been producing high quality ball valves over 2 decades.

Variety

We have a variety of styles and configurations. Choose from pipe threaded valves, garden hose valves, BSP valves, full port, standard port, and many more.

Custom

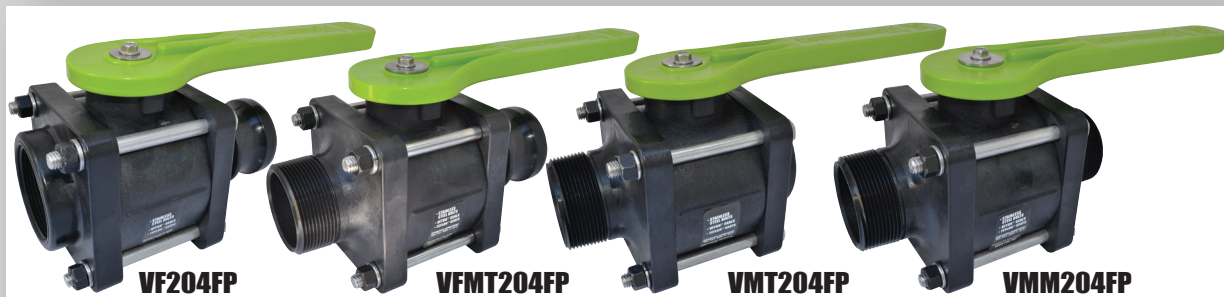
Can't find what you're looking for in our standard valve line? No worries, we make custom valves as well!

Knowledge

Let us use our expertise to help you make the right choice.



| P/N | Description | Size | Opening thru Hole | Max. PSI | PRICE ea. | CTN QTY. |
|--------|-------------------------|--------|-------------------|----------|-----------|----------|
| V050FP | Female NPT x Female NPT | 1/2" | 1/2" | 150 | \$39.98 | 24 |
| V075FP | Female NPT x Female NPT | 3/4" | 3/4" | 150 | \$39.98 | 24 |
| V100FP | Female NPT x Female NPT | 1" | 1" | 150 | \$44.08 | 24 |
| V125FP | Female NPT x Female NPT | 1-1/4" | 1-1/4" | 150 | \$54.85 | 24 |
| V150FP | Female NPT x Female NPT | 1-1/2" | 1-1/2" | 150 | \$54.85 | 24 |
| V200 | Female NPT x Female NPT | 2" | 1-1/2" | 150 | \$54.85 | 24 |
| V204FP | Female NPT x Female NPT | 2" | 2" | 100 | \$73.23 | 8 |
| V200FP | Female NPT x Female NPT | 2" | 2" | 100 | \$77.25 | 8 |
| V300 | Female NPT x Female NPT | 3" | 3" | 100 | \$124.21 | 8 |
| V300FP | Female NPT x Female NPT | 3" | 3" | 100 | \$172.50 | 6 |
| V400FP | Female NPT x Female NPT | 4" | 4" | 100 | \$325.50 | 2 |



| P/N | Description | Size | Opening thru Hole | Max. PSI | PRICE ea. | CTN QTY. |
|-----------|---------------------------|------|-------------------|----------|-----------|----------|
| VF204FP | Female NPT x Male Adapter | 2" | 2" | 100 | \$81.86 | 8 |
| VFMT204FP | Male NPT x Male Adapter | 2" | 2" | 100 | \$81.86 | 8 |
| VMT204FP | Female NPT x Male NPT | 2" | 2" | 100 | \$81.86 | 8 |
| VMM204FP | Male NPT x Male NPT | 2" | 2" | 100 | \$81.86 | 8 |

Bolted Ball Valve features:

- Stainless Steel Bolts • Precision molded in polypropylene.
- Polypropylene is reinforced with fiberglass for additional strength. Self-aligning ball moves freely against the Teflon® seats for smooth operation. The valve opens and closes with little pressure on the handle.
- Ball is diamond turned, after molding, to make it spherically perfect, which provides precise contact between ball and seats.
- Viton® "O" rings.
- Teflon® self-lubricating stem bushings and seats cannot stick or bind.



Replacement Handles

| DESCRIPTION | Green P/N | Yellow P/N | PRICE ea. |
|---------------------------------|-----------|------------|-----------|
| Handle Straight - 4 Bolt Series | V20153 | V20153Y | \$8.90 |
| Handle Straight - 6 Bolt Series | V25153 | V25153Y | \$14.52 |
| Handle Straight - 8 Bolt Series | V20154 | V20154Y | \$14.52 |

NEW

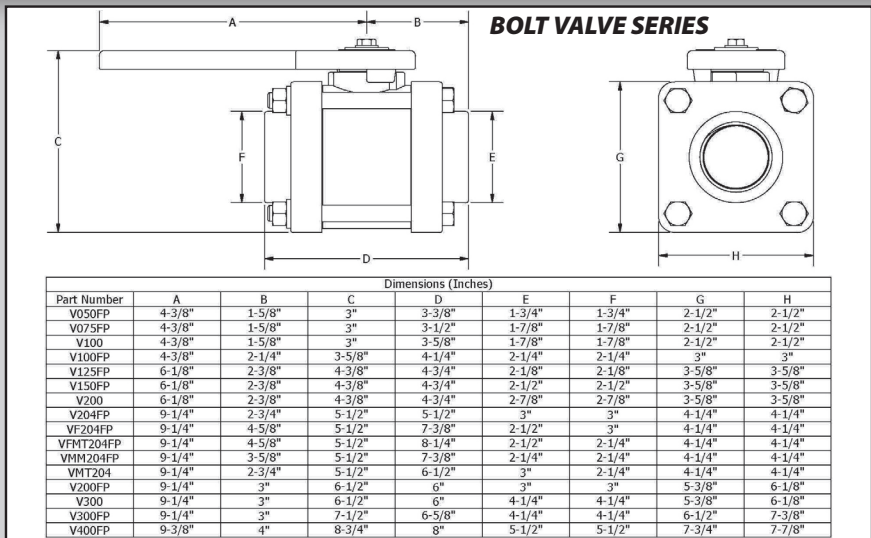


| P/N | Description | Size | Opening thru Hole | Max. PSI | PRICE ea. | CTN QTY. |
|---------|-------------------------|--------|-------------------|----------|-----------|----------|
| V050FPY | Female NPT x Female NPT | 1/2" | 1/2" | 150 | \$39.98 | 24 |
| V075FPY | Female NPT x Female NPT | 3/4" | 3/4" | 150 | \$39.98 | 24 |
| V100FPY | Female NPT x Female NPT | 1" | 1" | 150 | \$44.08 | 24 |
| V125FPY | Female NPT x Female NPT | 1-1/4" | 1-1/4" | 150 | \$54.85 | 24 |
| V150FPY | Female NPT x Female NPT | 1-1/2" | 1-1/2" | 150 | \$54.85 | 24 |
| V200Y | Female NPT x Female NPT | 2" | 1-1/2" | 150 | \$54.85 | 24 |
| V204FPY | Female NPT x Female NPT | 2" | 2" | 100 | \$73.23 | 8 |
| V200FPY | Female NPT x Female NPT | 2" | 2" | 100 | \$77.25 | 8 |
| V300Y | Female NPT x Female NPT | 3" | 3" | 100 | \$124.21 | 8 |
| V300FPY | Female NPT x Female NPT | 3" | 3" | 100 | \$172.50 | 6 |
| V400FPY | Female NPT x Female NPT | 4" | 4" | 100 | \$325.50 | 2 |

NEW



| P/N | Description | Size | Opening thru Hole | Max. PSI | PRICE ea. | CTN QTY. |
|------------|---------------------------|------|-------------------|----------|-----------|----------|
| VF204FPY | Female NPT x Male Adapter | 2" | 2" | 100 | \$81.86 | 8 |
| VFMT204FPY | Male NPT x Male Adapter | 2" | 2" | 100 | \$81.86 | 8 |
| VMT204FPY | Female NPT x Male NPT | 2" | 2" | 100 | \$81.86 | 8 |
| VMM204FPY | Male NPT x Male NPT | 2" | 2" | 100 | \$81.86 | 8 |



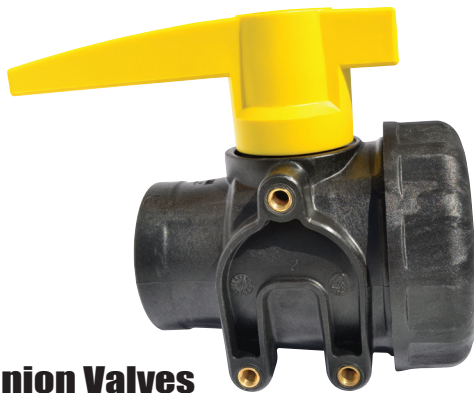


Angle Valve

| PART# | DESCRIPTION | PRICE ea. |
|---------|------------------------|-----------|
| VA204FP | 2" Full Port — 100 PSI | \$95.00 |

Angle Valve features:

- One quarter turn polypropylene ball valve
- Used in liquid plumbing application as a quick shut off valve
- 100 P.S.I. @ 70° F

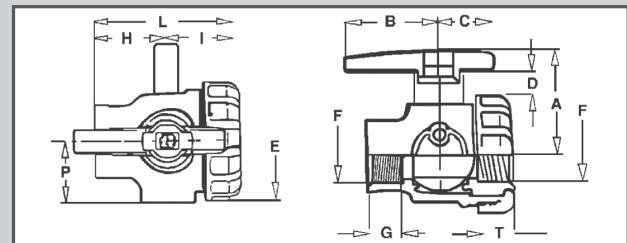


Single Union Valves

| PART# | DESCRIPTION | PRICE ea. |
|--------|-------------------|-----------|
| SU050E | 1/2" Female NPT | \$20.43 |
| SU075E | 3/4" Female NPT | \$20.43 |
| SU100E | 1" Female NPT | \$24.72 |
| SU125E | 1 1/4" Female NPT | \$42.45 |
| SU150E | 1 1/2" Female NPT | \$43.56 |
| SU200E | 2" Female NPT | \$55.30 |

Single Union Valve features:

- Sturdy Construction, fiberglass reinforced polypropylene body
- PTFE seats for smooth operation
- E.P.D.M. seals standard
- 125 P.S.I. @ 140° F



| F/F NPT Threads (F) | Type | Dimensions (Inches) | | | | | | | | | | |
|---------------------|------|---------------------|------|------|------|------|------|------|------|------|------|------|
| | | A | B | C | D | E | G | H | I | L | P | T |
| 1/2" | | 2.36 | 1.65 | 1.65 | 0.63 | 2.32 | 0.91 | 1.71 | 1.75 | 3.46 | | 0.91 |
| 3/4" | | 2.36 | 1.65 | 1.65 | 0.63 | 2.32 | 0.91 | 1.71 | 1.75 | 3.46 | | 0.91 |
| 1" | 1 | 2.87 | 1.65 | 2.09 | 0.79 | 2.72 | 0.91 | 1.83 | 2.05 | 3.88 | 1.46 | 0.98 |
| 1 1/4" | 1 | 3.15 | 1.65 | 3.03 | 0.79 | 3.23 | 0.98 | 2.11 | 2.17 | 4.27 | 1.69 | 1.02 |
| 1 1/2" | 2 | 3.43 | 1.93 | 3.15 | 0.79 | 3.90 | 1.10 | 2.46 | 2.50 | 4.96 | 2.01 | 1.10 |
| 2" | 2 | 4.33 | 1.93 | 5.12 | 0.98 | 4.53 | 1.18 | 2.87 | 2.97 | 5.85 | 2.01 | 1.18 |

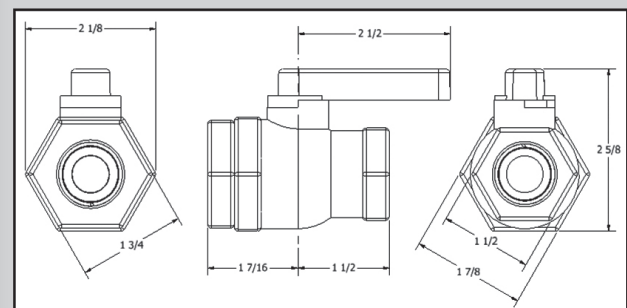


HM Quick Shut Off Valve

| PART# | DESCRIPTION | PRICE ea. |
|-------|--------------------------------------|-----------|
| HM50B | 1/2" Female NPT With Buna "O" Ring | \$14.12 |
| HM75B | 3/4" Female NPT With Buna "O" Ring | \$14.12 |
| HM50V | 1/2" Female NPT With Viton® "O" Ring | \$14.77 |
| HM75V | 3/4" Female NPT With Viton® "O" Ring | \$14.77 |

Shut Off Valve features:

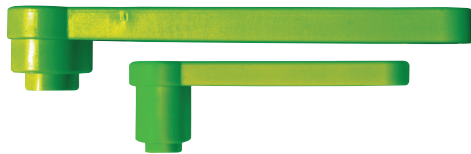
- One quarter turn polypropylene ball valve
- Used in liquid plumbing application as a quick shut off valve
- 75 P.S.I.





True Union Ball Valve

| PART # | DESCRIPTION | HANDLE | Maximum PSI | PRICE ea. |
|---------|------------------------------|--------------|-------------|-----------|
| TU050E | 1/2" Female NPT, Full Port | T handle | 125 | \$21.39 |
| TU050EL | 1/2" Female NPT, Full Port | Lever handle | 125 | \$23.19 |
| TU075E | 3/4" Female NPT, Full Port | T handle | 125 | \$23.64 |
| TU075EL | 3/4" Female NPT, Full Port | Lever handle | 125 | \$25.45 |
| TU100E | 1" Female NPT, Standard Port | T handle | 125 | \$26.34 |
| TU100EL | 1" Female NPT, Standard Port | Lever handle | 125 | \$28.15 |
| TU125E | 1-1/4" Female NPT, Full Port | T handle | 125 | \$35.34 |
| TU125EL | 1-1/4" Female NPT, Full Port | Lever handle | 125 | \$37.14 |
| TU150E | 1-1/2" Female NPT, Full Port | T handle | 125 | \$37.14 |
| TU150EL | 1-1/2" Female NPT, Full Port | Lever handle | 125 | \$38.94 |
| TU200E | 2" Female NPT, Standard Port | T handle | 125 | \$44.34 |
| TU200EL | 2" Female NPT, Standard Port | Lever handle | 125 | \$46.37 |



Optional Lever Handle

| PART # | DESCRIPTION | PRICE ea. |
|--------|---|-----------|
| TU25 | Lever handle for Small Valve (1/2" thru 1") | \$6.84 |
| TU26 | Lever handle for Large Valve (1 1/4" thru 2") | \$10.38 |

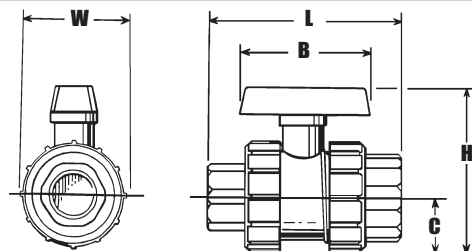
True Union Valve features:

- In-Line Repairable
- Sturdy construction, chemical couple polypropylene
- Precision machined ball & multiple "O" ring seals prevent leaking
- 125 P.S.I. @ 140°F
- PTFE filled Polyethylene Seats
- E.P.D.M. seals standard (optional for Viton® & Buna seals)
- Optional Lever Handles



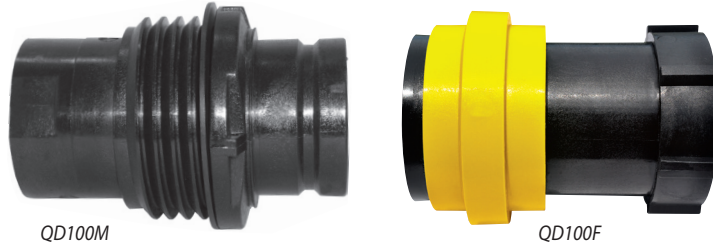
Optional T Handle

| PART # | DESCRIPTION | PRICE ea. |
|--------|--|-----------|
| TU15 | T Handle for True Union Valve (for 1/2" thru 1") | \$5.52 |
| TU16 | T Handle for True Union Valve (for 1-1/4" thru 2") | \$9.95 |



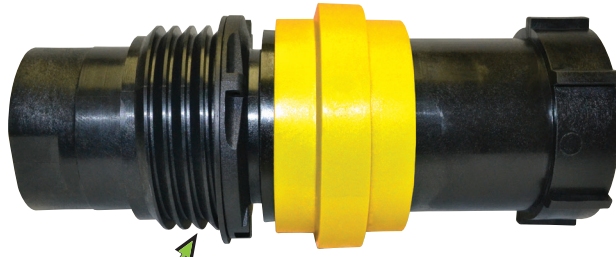
| SIZE | B | L | H | C | W |
|--------------------|--------|--------|--------|--------|--------|
| 1-1/4", 1-1/2", 2" | 4-1/4" | 6-1/4" | 5-1/2" | 1-7/8" | 3-3/4" |
| 1/2", 3/4", 1" | 3-1/2" | 4-3/4" | 3-3/8" | 1-1/8" | 2-3/8" |

Valve repair kits available.
Call 800-654-9808 for more information.



QD100M

QD100F



Available with 2" MPS Threads

Dry Poppet Couplings

| PART # | DESCRIPTION | Size | Max. PSI | PRICE ea. |
|--------|---|------|----------|-----------|
| QD100F | Female Dry Poppet Coupler, 1" Female NPT Threads FKM (viton type) Seals | 1" | 70 | \$87.40 |
| QD100M | Male Dry Poppet Adapter, 1" Female NPT Threads FKM (viton type) Seals | 1" | 70 | \$69.27 |

Dry Poppet Coupling features:

- Lightweight
- Minimal Fluid Spillage
- Easy to Use
- Economical
- PTFE filled Polyethylene Seats
- Reduces Risk of Exposure
- Wide Range of Chemical Resistance
- Maximum Operating Pressure 70 P.S.I. @ 70°F
- Maximum Operating Temperature 150°F
- 30 GPM Maximum Flow
- Precision Molded in Polypropylene
- 1" Female NPT Threads

Applications:

- Agriculture
- Industrial
- Pharmaceutical
- Chemical processing



Female NPT x Male Dry Poppet Adapter

| PART # | DESCRIPTION | Size | Max. PSI | PRICE ea. |
|--------|---------------------------------|------|----------|-----------|
| VQD200 | Female NPT x Dry Poppet Coupler | 2" | 70 | \$88.94 |



Cam Lever Couplings



After market research and study by the Green Leaf team an innovative solution was birthed to help enhance the product. The Gator Lock cam lever coupling was designed and patented by founder Michael Goda, along with his team of engineers.

Safety

The Gator Lock was designed to provide enhanced safety with the exclusive cam lever locking mechanism. This mechanism helps reduce the possibility of unintentional opening of the cam levers during use, which could result in personal injury and costly spills.



Interchangeability

Both the GatorLock & CamLock series couplers are made to an industry standard and will interchange with all cam lever coupler brands and materials made to the universal specification.

Quality

Green Leaf is an ISO 9001 certified company. GatorLock & CamLock couplers are manufactured at our Indiana facility to the highest quality standard in the industry.



B Series

| PART # | DESCRIPTION | PRICE ea. |
|---------|---|-----------|
| GLP050B | 3/4" Female Coupler x 1/2" Male NPT | \$12.80 |
| GLP075B | 3/4" Female Coupler x 3/4" Male NPT | \$12.80 |
| GLP100B | 1" Female Coupler x 1" Male NPT | \$14.70 |
| GLP125B | 1" Female Coupler x 1-1/4" Male NPT | \$14.70 |
| GLP150B | 1-1/2" Female Coupler x 1-1/2" Male NPT | \$17.23 |
| GLP200B | 2" Female Coupler x 2" Male NPT | \$20.98 |
| GLP300B | 3" Female Coupler x 3" Male NPT | \$35.27 |



C Series

| PART # | DESCRIPTION | PRICE ea. |
|---------|--|-----------|
| GLP050C | 3/4" Female Coupler x 1/2" Hose Barb | \$12.80 |
| GLP075C | 3/4" Female Coupler x 3/4" Hose Barb | \$12.80 |
| GLP100C | 1" Female Coupler x 1" Hose Barb | \$14.70 |
| GLP125C | 1" Female Coupler x 1-1/4" Hose Barb | \$14.70 |
| GLP150C | 1-1/2" Female Coupler x 1-1/2" Hose Barb | \$17.23 |
| GLP200C | 2" Female Coupler x 2" Hose Barb | \$20.98 |
| GLP300C | 3" Female Coupler x 3" Hose Barb | \$35.27 |



D Series

| PART # | DESCRIPTION | PRICE ea. |
|---------|---|-----------|
| GLP050D | 3/4" Female Coupler x 1/2" Female NPT | \$12.80 |
| GLP075D | 3/4" Female Coupler x 3/4" Female NPT | \$12.80 |
| GLP100D | 1" Female Coupler x 1" Female NPT | \$14.70 |
| GLP125D | 1" Female Coupler x 1-1/4" Female NPT | \$14.70 |
| GLP150D | 1-1/2" Female Coupler x 1-1/2" Female NPT | \$17.23 |
| GLP200D | 2" Female Coupler x 2" Female NPT | \$20.98 |
| GLP300D | 3" Female Coupler x 3" Female NPT | \$35.27 |



CAP Series

| PART # | DESCRIPTION | PRICE ea. |
|-----------|-----------------------------|-----------|
| GLP050CAP | 1/2" CAP for Male Adapter | \$12.80 |
| GLP075CAP | 3/4" CAP for Male Adapter | \$12.80 |
| GLP100CAP | 1" CAP for Male Adapter | \$14.70 |
| GLP125CAP | 1" CAP for Male Adapter | \$14.70 |
| GLP150CAP | 1-1/2" CAP for Male Adapter | \$17.23 |
| GLP200CAP | 2" CAP for Male Adapter | \$20.98 |
| GLP300CAP | 3" CAP for Male Adapter | \$35.27 |

GatorLock® Coupling features:

- Patented Locking Arms to reduce possibility of unintentional opening of cam levers during use.
- Glass Filled Polypropylene
- 1/2" thru 2" Maximum Operating Pressure 125 psi @ 70°F.
- 3" Maximum Operating Pressure 75 psi @ 70°F.
- E.P.D.M. Gaskets



1/2"series couplings interchange with 3/4" size couplings. Coupling ends are 3/4" size.
 1-1/4"series couplings interchange with 1" size couplings. Coupling ends are 1" size.

NEW



1/2"

| PART # | DESCRIPTION | PRICE ea. |
|--------|---------------------------------------|-----------|
| 050A | 3/4" Male Adapter x 1/2" Female NPT | \$5.09 |
| 050B | 3/4" Female Coupler x 1/2" Male NPT | \$11.64 |
| 050C | 3/4" Female Coupler x 1/2" Hose Barb | \$11.64 |
| 050D | 3/4" Female Coupler x 1/2" Female NPT | \$11.64 |
| 050E | 3/4" Male Adapter x 1/2" Hose Barb | \$5.50 |
| 050F | 1/2" Male Adapter x 1/2" Male NPT | \$5.50 |
| 050CAP | 1/2" CAP for Male Adapter | \$11.64 |
| 050PL | 1/2" Plug for Female Coupler | \$5.50 |

3/4"

| PART # | DESCRIPTION | PRICE ea. |
|--------|---------------------------------------|-----------|
| 075A | 3/4" Male Adapter x 3/4" Female NPT | \$5.09 |
| 075B | 3/4" Female Coupler x 3/4" Male NPT | \$11.64 |
| 075C | 3/4" Female Coupler x 3/4" Hose Barb | \$11.64 |
| 075D | 3/4" Female Coupler x 3/4" Female NPT | \$11.64 |
| 075E | 3/4" Male Adapter x 3/4" Hose Barb | \$5.50 |
| 075F | 3/4" Male Adapter x 3/4" Male NPT | \$5.50 |
| 075CAP | 3/4" CAP for Male Adapter | \$11.64 |
| 075PL | 3/4" Plug for Female Coupler | \$5.50 |

1"

| PART # | DESCRIPTION | PRICE ea. |
|--------|-----------------------------------|-----------|
| 100A | 1" Male Adapter x 1" Female NPT | \$5.09 |
| 100B | 1" Female Coupler x 1" Male NPT | \$13.38 |
| 100C | 1" Female Coupler x 1" Hose Barb | \$13.38 |
| 100D | 1" Female Coupler x 1" Female NPT | \$13.38 |
| 100E | 1" Male Adapter x 1" Hose Barb | \$6.11 |
| 100F | 1" Male Adapter x 1" Male NPT | \$6.11 |
| 100CAP | 1" CAP for Male Adapter | \$12.84 |
| 100PL | 1" Plug for Female Coupler | \$5.30 |

1" x 1-1/4"

| PART # | DESCRIPTION | PRICE ea. |
|--------|---------------------------------------|-----------|
| 125A | 1" Male Adapter x 1-1/4" Female NPT | \$5.09 |
| 125B | 1" Female Coupler x 1-1/4" Male NPT | \$13.38 |
| 125C | 1" Female Coupler x 1-1/4" Hose Barb | \$13.38 |
| 125D | 1" Female Coupler x 1-1/4" Female NPT | \$13.38 |
| 125E | 1" Male Adapter x 1-1/4" Hose Barb | \$6.11 |
| 125F | 1" Male Adapter x 1-1/4" Male NPT | \$6.11 |
| 125CAP | 1" CAP for Male Adapter | \$12.84 |
| 125PL | 1" Plug for Female Coupler | \$5.30 |

1-1/2"

| PART # | DESCRIPTION | PRICE ea. |
|--------|---|-----------|
| 150A | 1-1/2" Male Adapter x 1-1/2" Female NPT | \$5.78 |
| 150B | 1-1/2" Female Coupler x 1-1/2" Male NPT | \$15.68 |
| 150C | 1-1/2" Female Coupler x 1-1/2" Hose Barb | \$15.68 |
| 150D | 1-1/2" Female Coupler x 1-1/2" Female NPT | \$15.68 |
| 150E | 1-1/2" Male Adapter x 1-1/2" Hose Barb | \$6.12 |
| 150F | 1-1/2" Male Adapter x 1-1/2" Male NPT | \$6.12 |
| 150CAP | 1-1/2" CAP for Male Adapter | \$15.68 |
| 150PL | 1-1/2" Plug for Female Coupler | \$5.92 |

Cam Lever Coupling features:

- Glass Filled Polypropylene
- 1/2" thru 2" Maximum Operating Pressure 125 psi @ 70°F.
- 3" and 4" Maximum Operating Pressure 75 psi @ 70°F.
- E.P.D.M. Gaskets

1/2"series couplings interchange with 3/4" size couplings. Coupling ends are 3/4" size.

1-1/4"series couplings interchange with 1" size couplings. Coupling ends are 1" size.

*Product may vary depending on size.



NEW



1-1/2" x 1-1/4"

| PART # | DESCRIPTION | PRICE ea. |
|---------|---|-----------|
| 150125A | 1-1/2" Male Adapter x 1-1/4" Female NPT | \$5.78 |
| 150125B | 1-1/2" Female Coupler x 1-1/4" Male NPT | \$15.68 |
| 150125C | 1-1/2" Female Coupler x 1-1/4" Hose Barb | \$15.68 |
| 150125D | 1-1/2" Female Coupler x 1-1/4" Female NPT | \$15.68 |
| 150125E | 1-1/2" Male Adapter x 1-1/4" Hose Barb | \$6.12 |
| 150125F | 1-1/2" Male Adapter x 1-1/4" Male NPT | \$6.12 |

2"

| PART # | DESCRIPTION | PRICE ea. |
|--------|-----------------------------------|-----------|
| 200A | 2" Male Adapter x 2" Female NPT | \$6.82 |
| 200B | 2" Female Coupler x 2" Male NPT | \$19.10 |
| 200C | 2" Female Coupler x 2" Hose Barb | \$19.10 |
| 200D | 2" Female Coupler x 2" Female NPT | \$19.10 |
| 200E | 2" Male Adapter x 2" Hose Barb | \$8.05 |
| 200F | 2" Male Adapter x 2" Male NPT | \$8.05 |
| 200CAP | 2" CAP for Male Adapter | \$19.10 |
| 200PL | 2" Plug for Female Coupler | \$7.99 |

3"

| PART # | DESCRIPTION | PRICE ea. |
|--------|-----------------------------------|-----------|
| 300A | 3" Male Adapter x 3" Female NPT | \$16.47 |
| 300B | 3" Female Coupler x 3" Male NPT | \$32.10 |
| 300C | 3" Female Coupler x 3" Hose Barb | \$32.10 |
| 300D | 3" Female Coupler x 3" Female NPT | \$32.10 |
| 300E | 3" Male Adapter x 3" Hose Barb | \$21.11 |
| 300F | 3" Male Adapter x 3" Male NPT | \$21.11 |
| 300CAP | 3" CAP for Male Adapter | \$32.10 |
| 300PL | 3" Plug for Female Coupler | \$16.74 |

4"

| PART # | DESCRIPTION | PRICE ea. |
|--------|-----------------------------------|-----------|
| 400A | 4" Male Adapter x 4" Female NPT | \$25.12 |
| 400B | 4" Female Coupler x 4" Male NPT | \$63.61 |
| 400C | 4" Female Coupler x 4" Hose Barb | \$63.61 |
| 400D | 4" Female Coupler x 4" Female NPT | \$63.61 |
| 400E | 4" Male Adapter x 4" Hose Barb | \$25.12 |
| 400F | 4" Male Adapter x 4" Male NPT | \$25.12 |
| 400CAP | 4" CAP for Male Adapter | \$46.39 |
| 400PL | 4" Plug for Female Coupler | \$19.75 |

Cam Lever Coupling features:

- Glass Filled Polypropylene
- 1/2" thru 2" Maximum Operating Pressure 125 psi @ 70°F.
- 3" and 4" Maximum Operating Pressure 75 psi @ 70°F.
- E.P.D.M. Gaskets

1/2" series couplings interchange with 3/4" size couplings. Coupling ends are 3/4" size.

1-1/4" series couplings interchange with 1" size couplings. Coupling ends are 1" size.

*Product may vary depending on size.

200300A



300B200A



200300F



2" x 3"

| PART # | DESCRIPTION | PRICE ea. |
|----------|---------------------------------|-----------|
| 200300A | 2" Male Adapter x 3" Female NPT | \$9.12 |
| 300B200A | 2" Female Coupler x 3" Male NPT | \$30.39 |
| 200300F | 2" Male Adapter x 3" Male NPT | \$9.12 |



B Series

| PART # | DESCRIPTION | PRICE ea. |
|------------|---|-----------|
| GLP150BNLP | 1-1/2" Female Coupler x 1-1/2" Male NPT | \$10.83 |
| GLP200BNLP | 2" Female Coupler x 2" Male NPT | \$12.02 |



C Series

| PART # | DESCRIPTION | PRICE ea. |
|------------|--|-----------|
| GLP150CNLP | 1-1/2" Female Coupler x 1-1/2" Hose Barb | \$10.83 |
| GLP200CNLP | 2" Female Coupler x 2" Hose Barb | \$12.02 |



CAP Series

| PART # | DESCRIPTION | PRICE ea. |
|--------------|-----------------------------|-----------|
| GLP150CAPNLP | 1-1/2" CAP for Male Adapter | \$10.83 |
| GLP200CAPNLP | 2" CAP for Male Adapter | \$12.02 |



D Series

| PART # | DESCRIPTION | PRICE ea. |
|------------|---|-----------|
| GLP150DNLP | 1-1/2" Female Coupler x 1-1/2" Female NPT | \$11.45 |
| GLP200DNLP | 2" Female Coupler x 2" Female NPT | \$12.02 |

"Green Arm" Coupling features:

- Economical Plastic Arms
- Maximum Operating Pressure 90 P.S.I. @ 70°F
- Glass Filled Polypropylene
- E.P.D.M. Gaskets
- Arms have Lifetime Warranty

1/2"series couplings interchange with 3/4" size couplings. Coupling ends are 3/4" size.
 1-1/4"series couplings interchange with 1" size couplings. Coupling ends are 1" size.



AL 90° Series

| PART # | DESCRIPTION | PRICE ea. |
|--------|---|-----------|
| 150A90 | 1-1/2" Male Adapter x 1-1/2" Female NPT | \$10.02 |
| 200A90 | 2" Male Adapter x 2" Female NPT | \$11.44 |



CL 90° Series

| PART # | DESCRIPTION | PRICE ea. |
|--------|---|-----------|
| 150C90 | 1-1/2" Female Coupler x 1-1/2" Hose Shank | \$22.54 |
| 200C90 | 2" Female Coupler x 2" Hose Shank | \$25.60 |



DL 90° Series

| PART # | DESCRIPTION | PRICE ea. |
|--------|---|-----------|
| 150D90 | 1-1/2" Female Coupler x 1-1/2" Female NPT | \$22.54 |
| 200D90 | 2" Female Coupler x 2" Female NPT | \$25.60 |



FL 90° Series

| PART # | DESCRIPTION | PRICE ea. |
|--------|---------------------------------------|-----------|
| 150F90 | 1-1/2" Male Adapter x 1-1/2" Male NPT | \$12.01 |
| 200F90 | 2" Male Adapter x 2" Male NPT | \$12.88 |



45° F Series

| PART # | DESCRIPTION | PRICE ea. |
|--------|-------------------------------|-----------|
| 200F45 | 2" Male Adapter x 2" Male NPT | \$18.36 |

90 Degree Coupling features:

- Glass Filled Polypropylene
- Maximum Operating Pressure 125 P.S.I. @ 70°F
- E.P.D.M. Gaskets



Replacement Gasket

| PART # | DESCRIPTION | PRICE ea. |
|--------|--------------------------|-----------|
| 75G | 1/2" & 3/4" EPDM Gasket | \$0.92 |
| 100G | 1" & 1-1/4" EPDM Gasket | \$0.92 |
| 150G | 1-1/2" EPDM Gasket | \$0.92 |
| 200G | 2" EPDM Gasket | \$1.03 |
| 300G | 3" EPDM Gasket | \$1.41 |
| 400G | 4" EPDM Gasket | \$3.31 |
| 75GXT | 3/4" Xtra Thick Gasket | \$1.38 |
| 100GXT | 1" Xtra Thick Gasket | \$1.50 |
| 150GXT | 1-1/2" Xtra Thick Gasket | \$1.75 |
| 200GXT | 2" Xtra Thick Gasket | \$2.18 |
| 300GXT | 3" Xtra Thick Gasket | \$2.90 |

NEW



T Bolt Clamp

| PART # | DESCRIPTION | PRICE ea. |
|--------|---------------------|-----------|
| TB112 | 1-1/2" T-Bolt Clamp | \$2.60 |
| TB200 | 2" T-Bolt Clamp | \$2.85 |
| TB300 | 3" T-Bolt Clamp | \$3.29 |

*304 Stainless

NEW



Schedule 80

Selection

Schedule 80 heavy duty fittings are available in sizes ranging from 1/2" to 3".

Durability

Green Leaf's hose & pipe fittings are utilized for a variety of agricultural, plumbing and industrial liquid-handling solutions.

Polypropylene

Our resin is a high strength custom blended glass filled polypropylene.

Custom

Can't find what you're looking for in our fitting line? No worries, we make custom fittings as well!

Knowledge

Let us use our expertise to help you make the right choice.

Experience

We have been producing high quality fittings over 2 decades.



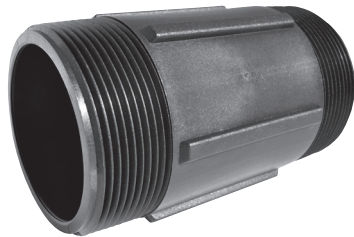
Straight Adapter

| PART # | SIZE & DESCRIPTION | PRICE ea. |
|----------|------------------------------------|-----------|
| HB050 | 1/2" Male NPT x 1/2" Hose Barb | \$1.32 |
| HB075050 | 3/4" Male NPT x 1/2" Hose Barb | \$1.46 |
| HB075 | 3/4" Male NPT x 3/4" Hose Barb | \$1.46 |
| HB075100 | 3/4" Male NPT x 1" Hose Barb | \$1.79 |
| HB100075 | 1" Male NPT x 3/4" Hose Barb | \$1.79 |
| HB100 | 1" Male NPT x 1" Hose Barb | \$1.79 |
| HB100125 | 1" Male NPT x 1-1/4" Hose Barb | \$2.20 |
| HB125100 | 1-1/4" Male NPT x 1" Hose Barb | \$2.20 |
| HB125 | 1-1/4" Male NPT x 1-1/4" Hose Barb | \$2.20 |
| HB150125 | 1-1/2" Male NPT x 1-1/4" Hose Barb | \$3.00 |
| HB150 | 1-1/2" Male NPT x 1-1/2" Hose Barb | \$3.36 |
| HB150200 | 1-1/2" Male NPT x 2" Hose Barb | \$5.16 |
| HB200150 | 2" Male NPT x 1-1/2" Hose Barb | \$5.16 |
| HB200 | 2" Male NPT x 2" Hose Barb | \$4.11 |
| HB300 | 3" Male NPT x 3" Hose Barb | \$13.26 |



Coupling

| PART # | DESCRIPTION | PRICE ea. |
|---------|---------------------------------------|-----------|
| CPLG075 | 3/4" Female NPT x 3/4" Female NPT | \$4.00 |
| CPLG100 | 1" Female NPT x 1" Female NPT | \$4.56 |
| CPLG150 | 1-1/2" Female NPT x 1-1/2" Female NPT | \$10.21 |
| CPLG200 | 2" Female NPT x 2" Female NPT | \$11.64 |
| CPLG300 | 3" Female NPT x 3" Female NPT | \$32.95 |



Nipple

| PART # | DESCRIPTION | PRICE ea. |
|--------|------------------------------------|-----------|
| M1800P | 1/8" Male NPT x 1/8" Male NPT | \$0.62 |
| M1400P | 1/4" Male NPT x 1/4" Male NPT | \$0.70 |
| M3800P | 3/8" Male NPT x 3/8" Male NPT | \$0.73 |
| M1200P | 1/2" Male NPT x 1/2" Male NPT | \$0.75 |
| M3400P | 3/4" Male NPT x 3/4" Male NPT | \$0.85 |
| M1000P | 1" Male NPT x 1" Male NPT | \$1.25 |
| M1140P | 1-1/4" Male NPT x 1-1/4" Male NPT | \$2.14 |
| M1120P | 1-1/2" Male NPT x 1-1/2" Male NPT | \$2.80 |
| M1124P | 1-1/2" Male NPT X 4" Male NPT Long | \$7.37 |
| M1126P | 1-1/2" Male NPT X 6" Male NPT Long | \$8.67 |
| M2000P | 2" Male NPT x 2" Male NPT | \$4.07 |
| M2004P | 2" Male NPT X 4" Male NPT Long | \$8.58 |
| M2006P | 2" Male NPT X 6" Male NPT Long | \$10.01 |
| M3000P | 3" Male NPT X 3" Male NPT Long | \$12.75 |
| M3006P | 3" Male NPT X 6" Male NPT Long | \$24.71 |



Reducing Coupling

| PART # | DESCRIPTION | PRICE ea. |
|----------|-----------------------------------|-----------|
| RC200100 | 2" Female NPT x 1" Female NPT | \$10.70 |
| RC200150 | 2" Female NPT x 1-1/2" Female NPT | \$10.70 |
| RC300200 | 3" Female NPT x 2" Female NPT | \$37.98 |



Reducing Nipple

| PART # | DESCRIPTION | PRICE ea. |
|----------|-------------------------------|-----------|
| RN200150 | 2" Male NPT x 1-1/2" Male NPT | \$3.07 |
| RN300200 | 3" Male NPT x 2" Male NPT | \$12.70 |



Street Elbow

| PART # | DESCRIPTION | PRICE ea. |
|---------|---|-----------|
| SE14P | 1/4" Female NPT x 1/4" Male NPT Long 90° Street Elbow | \$3.05 |
| SE38P | 3/8" Female NPT x 3/8" Male NPT Long 90° Street Elbow | \$3.10 |
| SE12P | 1/2" Female NPT x 1/2" Male NPT Long 90° Street Elbow | \$3.15 |
| SE1234P | 3/4" Female NPT x 1/2" Male NPT Long 90° Street Elbow | \$3.25 |
| SE34P | 3/4" Female NPT x 3/4" Male NPT Long 90° Street Elbow | \$3.60 |
| SE100P | 1" Female NPT x 1" Male NPT Long 90° Street Elbow | \$4.64 |
| SE114P | 1-1/4" Female NPT x 1-1/4" Male NPT Long 90° Street Elbow | \$6.38 |
| SE112P | 1-1/2" Female NPT x 1-1/2" Male NPT Long 90° Street Elbow | \$7.80 |
| SE200P | 2" Female NPT x 2" Male NPT Long 90° Street Elbow | \$8.30 |
| SE300P | 3" Female NPT x 3" Male NPT Long 90° Street Elbow | \$54.60 |



45° Street Elbow

| PART # | DESCRIPTION | PRICE ea. |
|---------|---|-----------|
| SL15045 | 1-1/2" Female NPT x 1-1/2" Male NPT Long 45° Street Elbow | \$12.23 |
| SL20045 | 2" Female NPT x 2" Male NPT Long 45° Street Elbow | \$14.48 |



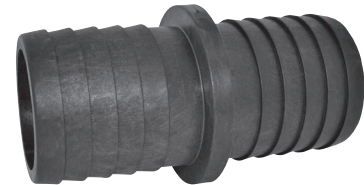
Elbow

| PART # | DESCRIPTION | PRICE ea. |
|---------|--|-----------|
| HB15090 | 1-1/2" Male NPT Long x 1-1/2" Long Hose Barb 90° Elbow | \$7.60 |
| HB20090 | 2" Male NPT Long x 2" Long Hose Barb 90° Elbow | \$8.32 |
| HB30090 | 3" Male NPT Long x 3" Long Hose Barb 90° Elbow | \$40.24 |



Elbow

| PART # | DESCRIPTION | PRICE ea. |
|---------|---------------------------------------|-----------|
| ELF12P | 1/2" Female NPT x 1/2" Female NPT | \$2.95 |
| ELF34P | 3/4" Female NPT x 3/4" Female NPT | \$3.30 |
| ELF100P | 1" Female NPT x 1" Female NPT | \$4.47 |
| ELF114P | 1-1/4" Female NPT x 1-1/4" Female NPT | \$6.14 |
| ELF112P | 1-1/2" Female NPT x 1-1/2" Female NPT | \$7.75 |
| ELF200P | 2" Female NPT x 2" Female NPT | \$10.41 |
| ELF300P | 3" Female NPT x 3" Female NPT | \$53.50 |



Straight Hose Mender

| PART # | DESCRIPTION | PRICE ea. |
|--------|-----------------------------|-----------|
| HM200 | 2" Hose Barb x 2" Hose Barb | \$4.22 |
| HM300 | 3" Hose Barb x 3" Hose Barb | \$13.16 |



Tee

| PART # | DESCRIPTION | PRICE ea. |
|--------|-------------------|-----------|
| TT14P | 1/4" Female NPT | \$3.74 |
| TT12P | 1/2" Female NPT | \$3.85 |
| TT34P | 3/4" Female NPT | \$4.79 |
| TT100P | 1" Female NPT | \$6.29 |
| TT114P | 1-1/4" Female NPT | \$7.97 |
| TT112P | 1-1/2" Female NPT | \$9.80 |
| TT200P | 2" Female NPT | \$12.97 |
| TT300P | 3" Female NPT | \$54.50 |



Tee w Gauge Port

| PART # | DESCRIPTION | PRICE ea. |
|----------|-----------------------------------|-----------|
| TT1214P | 1/2" Female NPT x 1/4" Gauge Port | \$6.50 |
| TT3414P | 3/4" Female NPT x 1/4" Gauge Port | \$8.50 |
| TT10014P | 1" Female NPT x 1/4" Gauge Port | \$10.50 |



Pipe Caps

| PART # | DESCRIPTION | PRICE ea. |
|--------|----------------------------|-----------|
| CAP050 | 1/2" Female NPT Poly Cap | \$5.37 |
| CAP075 | 3/4" Female NPT Poly Cap | \$5.37 |
| CAP100 | 1" Female NPT Poly Cap | \$5.37 |
| CAP125 | 1-1/4" Female NPT Poly Cap | \$6.04 |
| CAP150 | 1-1/2" Female NPT Poly Cap | \$7.60 |
| CAP200 | 2" Female NPT Poly Cap | \$8.82 |
| CAP300 | 3" Female NPT Poly Cap | \$31.58 |



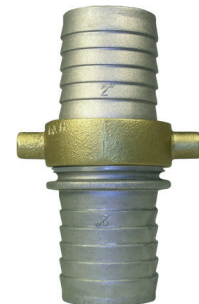
Plug

| PART # | DESCRIPTION | PRICE ea. |
|---------|------------------|-----------|
| PLUG150 | 1-1/2" Long Plug | \$4.43 |
| PLUG200 | 2" Long Plug | \$4.43 |
| PLUG300 | 3" Long Plug | \$17.46 |



Steel Plated Straight Adapters

| PART # | SIZE & DESCRIPTION | PRICE ea. |
|---------|-----------------------------|-----------|
| CN050SP | 1/2" Male NPT x Hose Barb | \$3.07 |
| CN075SP | 3/4" Male NPT x Hose Barb | \$3.20 |
| CN100SP | 1" Male NPT x Hose Barb | \$4.11 |
| CN125SP | 1-1/4" Male NPT x Hose Barb | \$5.53 |
| CN150SP | 1-1/2" Male NPT x Hose Barb | \$7.09 |
| CN200SP | 2" Male NPT x Hose Barb | \$9.65 |



Pin Lug Couplers

- Pin Lug Hose Barb Couplers (Full Sets)
- Aluminum Shank with Brass Swivel Nut

| PART # | DESCRIPTION | PRICE ea. |
|----------|-------------------|-----------|
| PL150DP | 1-1/2" Hose Barbs | \$17.49 |
| PL200DP | 2" Hose Barbs | \$23.19 |
| PG150NBR | 1-1/2" Gasket | \$0.53 |
| PG200NBR | 2" Gasket | \$0.58 |



Fittings

Selection

Hose, pipe, garden hose, nozzle and heavy duty fittings are available in sizes ranging from 1/8" to 3".

Durability

Green Leaf's hose & pipe fittings are utilized for a variety of agricultural, plumbing and industrial liquid-handling solutions.

Polypropylene

Our resin is a high strength custom blended glass filled polypropylene.

Nylon

Green Leaf's hose & pipe fittings are certified by NSF International NSF/ANSI Standard 61 – Drinking Water System Components, Health Effects and NSF/ANSI Standard 372 – Drinking Water System Components, Lead Content.

Experience

We have been manufacturing top quality fittings since 1983.

Straight Adapter

Use in conjunction with a hose clamp and quality thread sealant.



| PART # | | PRICE ea. | | THREAD | HOSE BARB |
|---------|--------|-----------|--------|------------|-----------|
| NYLON | | POLY | | Male NPT x | HOSE BARB |
| A18316 | \$0.60 | | | 1/8" | 3/16" |
| A1814 | \$0.45 | A1814P | \$0.66 | 1/8" | 1/4" |
| A18516 | \$0.62 | | | 1/8" | 5/16" |
| A1838 | \$0.45 | A1838P | \$0.66 | 1/8" | 3/8" |
| A1812 | \$0.50 | A1812P | \$0.66 | 1/8" | 1/2" |
| A1414 | \$0.45 | A1414P | \$0.64 | 1/4" | 1/4" |
| A14516 | \$0.73 | | | 1/4" | 5/16" |
| A1438 | \$0.46 | A1438P | \$0.65 | 1/4" | 3/8" |
| A1412 | \$0.48 | A1412P | \$0.66 | 1/4" | 1/2" |
| A1458 | \$0.87 | A1458P | \$1.23 | 1/4" | 5/8" |
| A1434 | \$0.89 | A1434P | \$1.26 | 1/4" | 3/4" |
| A3814 | \$0.47 | A3814P | \$0.66 | 3/8" | 1/4" |
| A38516 | \$0.86 | | | 3/8" | 5/16" |
| A3838 | \$0.48 | A3838P | \$0.66 | 3/8" | 3/8" |
| A3812 | \$0.48 | A3812P | \$0.66 | 3/8" | 1/2" |
| A3858 | \$0.48 | A3858P | \$0.66 | 3/8" | 5/8" |
| A3834 | \$0.60 | A3834P | \$0.73 | 3/8" | 3/4" |
| A1214 | \$0.51 | A1214P | \$0.68 | 1/2" | 1/4" |
| A1238 | \$0.52 | A1238P | \$0.69 | 1/2" | 3/8" |
| A1212 | \$0.53 | A1212P | \$0.67 | 1/2" | 1/2" |
| A1258 | \$0.57 | A1258P | \$0.70 | 1/2" | 5/8" |
| A1234 | \$0.67 | A1234P | \$0.73 | 1/2" | 3/4" |
| A1210 | \$0.88 | A1210P | \$0.96 | 1/2" | 1" |
| A12114 | \$4.67 | A12114P | \$5.20 | 1/2" | 1-1/4" |
| A3414 | \$0.83 | A3414P | \$0.84 | 3/4" | 1/4" |
| A3438 | \$0.60 | A3438P | \$0.72 | 3/4" | 3/8" |
| A3412 | \$0.61 | A3412P | \$0.73 | 3/4" | 1/2" |
| A3458 | \$0.98 | A3458P | \$1.00 | 3/4" | 5/8" |
| A3434 | \$0.67 | A3434P | \$0.70 | 3/4" | 3/4" |
| A3410 | \$0.83 | A3410P | \$0.85 | 3/4" | 1" |
| A34114 | \$1.61 | A34114P | \$1.81 | 3/4" | 1-1/4" |
| A1038 | \$0.85 | A1038P | \$0.86 | 1" | 3/8" |
| A1012 | \$0.83 | A1012P | \$0.85 | 1" | 1/2" |
| A1058 | \$0.84 | A1058P | \$0.85 | 1" | 5/8" |
| A1034 | \$0.85 | A1034P | \$0.86 | 1" | 3/4" |
| A1010 | \$0.93 | A1010P | \$0.96 | 1" | 1" |
| A1114 | \$1.94 | A1114P | \$2.12 | 1" | 1-1/4" |
| A11434 | \$2.51 | A11434P | \$2.78 | 1-1/4" | 3/4" |
| A1141 | \$2.08 | A1141P | \$2.23 | 1-1/4" | 1" |
| A114 | \$1.95 | A114P | \$2.16 | 1-1/4" | 1-1/4" |
| A114112 | \$2.15 | A114112P | \$2.28 | 1-1/4" | 1-1/2" |
| A1121 | \$2.31 | A1121P | \$2.44 | 1-1/2" | 1" |
| A112 | \$2.16 | A112P | \$2.33 | 1-1/2" | 1-1/2" |
| A112114 | \$2.27 | A112114P | \$2.38 | 1-1/2" | 1-1/4" |
| A112200 | \$6.74 | A112200P | \$7.37 | 1-1/2" | 2" |
| A200112 | \$5.71 | A200112P | \$6.06 | 2" | 1-1/2" |
| A200 | \$2.92 | A200P | \$2.95 | 2" | 2" |

90 Degree Elbow

Use in conjunction with a hose clamp and quality thread sealant.

| PART # | | | | THREAD | HOSE BARB |
|----------|-----------|-----------|-----------|------------|-----------|
| NYLON | PRICE ea. | POLY | PRICE ea. | Male NPT x | HOSE BARB |
| EL18316 | \$1.23 | | | 1/8" | 3/16" |
| EL1814 | \$0.60 | EL1814P | \$0.65 | 1/8" | 1/4" |
| EL1838 | \$1.33 | | | 1/8" | 3/8" |
| EL1414 | \$0.57 | EL1414P | \$0.64 | 1/4" | 1/4" |
| EL14516 | \$1.26 | | | 1/4" | 5/16" |
| EL1438 | \$0.58 | EL1438P | \$0.66 | 1/4" | 3/8" |
| EL1412 | \$0.66 | EL1412P | \$0.68 | 1/4" | 1/2" |
| EL1458 | \$0.83 | EL1458P | \$0.84 | 1/4" | 5/8" |
| EL3814 | \$0.69 | EL3814P | \$0.70 | 3/8" | 1/4" |
| EL38516 | \$1.38 | | | 3/8" | 5/16" |
| EL3838 | \$0.73 | EL3838P | \$0.74 | 3/8" | 3/8" |
| EL3812 | \$0.73 | EL3812P | \$0.74 | 3/8" | 1/2" |
| EL3858 | \$0.77 | EL3858P | \$0.78 | 3/8" | 5/8" |
| EL1214 | \$1.46 | EL1214P | \$1.58 | 1/2" | 1/4" |
| EL1238 | \$0.77 | EL1238P | \$0.78 | 1/2" | 3/8" |
| EL1212 | \$0.78 | EL1212P | \$0.79 | 1/2" | 1/2" |
| EL1258 | \$0.96 | EL1258P | \$0.97 | 1/2" | 5/8" |
| EL1234 | \$1.02 | EL1234P | \$1.04 | 1/2" | 3/4" |
| EL3414 | \$1.62 | EL3414P | \$1.64 | 3/4" | 1/4" |
| EL3438 | \$0.88 | EL3438P | \$0.90 | 3/4" | 3/8" |
| EL3412 | \$0.92 | EL3412P | \$0.94 | 3/4" | 1/2" |
| EL3458 | \$0.98 | EL3458P | \$1.00 | 3/4" | 5/8" |
| EL3434 | \$1.05 | EL3434P | \$1.07 | 3/4" | 3/4" |
| EL3410 | \$1.09 | EL3410P | \$1.11 | 3/4" | 1" |
| EL1038 | \$1.04 | EL1038P | \$1.05 | 1" | 3/8" |
| EL1012 | \$1.04 | EL1012P | \$1.05 | 1" | 1/2" |
| EL1058 | \$1.11 | EL1058P | \$1.13 | 1" | 5/8" |
| EL1034 | \$1.17 | EL1034P | \$1.19 | 1" | 3/4" |
| EL1010 | \$1.28 | EL1010P | \$1.30 | 1" | 1" |
| EL1114 | \$2.76 | EL1114P | \$2.84 | 1" | 1-1/4" |
| EL11434 | \$2.57 | EL11434P | \$2.60 | 1-1/4" | 3/4" |
| EL1141 | \$2.20 | EL1141P | \$2.33 | 1-1/4" | 1" |
| EL114 | \$2.36 | EL114P | \$2.44 | 1-1/4" | 1-1/4" |
| EL114112 | \$4.76 | EL114112P | \$4.88 | 1-1/4" | 1-1/2" |
| EL112 | \$3.04 | EL112P | \$3.07 | 1-1/2" | 1-1/2" |
| EL200 | \$4.01 | EL200P | \$4.06 | 2" | 2" |



90 Degree Elbow

Use in conjunction with a hose clamp and quality thread sealant.

| PART # | | | | THREAD | HOSE BARB |
|---------|-----------|----------|-----------|--------------|-----------|
| NYLON | PRICE ea. | POLY | PRICE ea. | Female NPT x | HOSE BARB |
| EL1212F | \$1.19 | EL1212FP | \$1.11 | 1/2" | 1/2" |
| EL3412F | \$1.19 | EL3412FP | \$1.30 | 3/4" | 1/2" |
| EL3434F | \$1.45 | EL3434FP | \$1.58 | 3/4" | 3/4" |



Straight Hose Mender

Used in fluid plumbing applications requiring the connection of two hoses. Commonly called a hose splice fitting or a shim fitting.

| PART # | | | | BARB 1 | BARB 2 |
|----------|-----------|----------|-----------|-------------|-----------|
| NYLON | PRICE ea. | POLY | PRICE ea. | HOSE BARB x | HOSE BARB |
| SHM1800 | \$0.49 | SHM1800P | \$0.62 | 1/8" | 1/8" |
| SHM3160 | \$0.50 | SHM3160P | \$0.63 | 3/16" | 3/16" |
| SHM1418 | \$0.66 | | | 1/4" | 1/8" |
| SHM14316 | \$0.66 | | | 1/4" | 3/16" |
| SHM1400 | \$0.43 | SHM1400P | \$0.63 | 1/4" | 1/4" |
| SHM5160 | \$0.56 | SHM5160P | \$0.63 | 5/16" | 5/16" |
| SHM3800 | \$0.48 | SHM3800P | \$0.64 | 3/8" | 3/8" |
| SHM3814 | \$0.60 | SHM3814P | \$0.92 | 3/8" | 1/4" |
| SHM1214 | \$0.67 | SHM1214P | \$0.70 | 1/2" | 1/4" |
| SHM1200 | \$0.61 | SHM1200P | \$0.66 | 1/2" | 1/2" |
| SHM1238 | \$0.50 | SHM1238P | \$0.65 | 1/2" | 3/8" |
| SHM1258 | \$0.69 | SHM1258P | \$0.70 | 1/2" | 5/8" |
| SHM5800 | \$0.69 | SHM5800P | \$0.70 | 5/8" | 5/8" |
| SHM3412 | \$1.78 | | | 3/4" | 1/2" |
| SHM3400 | \$0.77 | SHM3400P | \$0.78 | 3/4" | 3/4" |
| SHM1000 | \$0.91 | SHM1000P | \$0.93 | 1" | 1" |
| SHM114 | \$1.49 | SHM114P | \$1.83 | 1-1/4" | 1-1/4" |
| SHM112 | \$3.09 | SHM112P | \$3.18 | 1-1/2" | 1-1/2" |
| SHM200 | \$6.07 | SHM200P | \$6.54 | 2" | 2" |



Tee Adapter

Used in fluid plumbing applications requiring a connection of two hoses to a Female NPT fitting and a hose.

| PART # | | | | THREAD | HOSE BARB |
|--------|-----------|---------|-----------|------------|-----------|
| NYLON | PRICE ea. | POLY | PRICE ea. | Male NPT x | HOSE BARB |
| MT1234 | \$1.29 | MT1234P | \$1.73 | 1/2" | 3/4" |
| MT3438 | \$1.21 | MT3438P | \$1.64 | 3/4" | 3/8" |
| MT3412 | \$1.26 | MT3412P | \$1.70 | 3/4" | 1/2" |
| MT3434 | \$1.37 | MT3434P | \$1.80 | 3/4" | 3/4" |
| MT1038 | \$1.31 | MT1038P | \$1.74 | 1" | 3/8" |
| MT1012 | \$1.36 | MT1012P | \$1.79 | 1" | 1/2" |
| MT1034 | \$1.48 | MT1034P | \$1.91 | 1" | 3/4" |



Elbow Barb

Use in conjunction with a hose clamp and quality thread sealant.

| PART # | | | | BARB 1 | BARB 2 |
|--------|-----------|---------|-----------|-----------------------|-----------|
| NYLON | PRICE ea. | POLY | PRICE ea. | HOSE BARB x 90 DEGREE | HOSE BARB |
| EB1414 | \$1.07 | EB1414P | \$1.37 | 1/4" | 1/4" |
| EB3838 | \$0.96 | EB3838P | \$0.98 | 3/8" | 3/8" |
| EB1212 | \$0.69 | EB1212P | \$0.71 | 1/2" | 1/2" |
| EB5858 | \$1.11 | EB5858P | \$1.12 | 5/8" | 5/8" |
| EB3434 | \$0.89 | EB3434P | \$0.98 | 3/4" | 3/4" |
| EB1010 | \$2.52 | | | 1" | 1" |
| EB114 | \$3.58 | EB114P | \$3.87 | 1-1/4" | 1-1/4" |
| EB112 | \$3.70 | EB112P | \$3.87 | 1-1/2" | 1-1/2" |
| EB200 | \$7.11 | EB200P | \$7.21 | 2" | 2" |



Insert Tee

Use in conjunction with a hose clamp and quality thread sealant.

| PART # | | | | BARB 1 | BARB 2 | BARB 3 |
|--------|-----------|--------|-----------|--------|--------|--------|
| NYLON | PRICE ea. | POLY | PRICE ea. | | | |
| T18 | \$1.15 | T18P | \$1.23 | 1/8" | 1/8" | 1/8" |
| T3160 | \$1.28 | | | 3/16" | 3/16" | 3/16" |
| T14 | \$0.86 | T14P | \$1.24 | 1/4" | 1/4" | 1/4" |
| T38 | \$0.90 | T38P | \$1.28 | 3/8" | 3/8" | 3/8" |
| T3812 | \$0.94 | T3812P | \$1.31 | 1/2" | 1/2" | 3/8" |
| T12 | \$0.93 | T12P | \$1.28 | 1/2" | 1/2" | 1/2" |
| T58 | \$1.00 | T58P | \$1.34 | 5/8" | 5/8" | 5/8" |
| T3412 | \$1.00 | T3412P | \$1.34 | 1/2" | 1/2" | 3/4" |
| T34 | \$1.18 | T34P | \$1.34 | 3/4" | 3/4" | 3/4" |
| T100 | \$2.06 | T100P | \$2.09 | 1" | 1" | 1" |
| T114 | \$3.01 | T114P | \$3.06 | 1-1/4" | 1-1/4" | 1-1/4" |
| T112 | \$3.56 | T112P | \$3.66 | 1-1/2" | 1-1/2" | 1-1/2" |
| T200 | \$8.25 | T200P | \$8.35 | 2" | 2" | 2" |



Straight Adapter

Used in fluid plumbing applications requiring straight connection to a Male fitting and a hose.

| PART # | | | | THREAD | HOSE BARB |
|--------|-----------|---------|-----------|------------------------|-----------|
| NYLON | PRICE ea. | POLY | PRICE ea. | Female NPT x HOSE BARB | |
| AF1414 | \$1.40 | | | 1/4" | 1/4" |
| AF1438 | \$3.30 | | | 1/4" | 3/8" |
| AF3838 | \$3.77 | AF3838P | \$4.05 | 3/8" | 3/8" |
| AF3812 | \$1.15 | AF3812P | \$1.26 | 3/8" | 1/2" |
| AF1212 | \$1.15 | AF1212P | \$1.26 | 1/2" | 1/2" |
| AF1238 | \$1.15 | AF1238P | \$1.26 | 1/2" | 3/8" |
| | | AF1234P | \$3.26 | 1/2" | 3/4" |
| AF3412 | \$3.88 | AF3412P | \$3.90 | 3/4" | 1/2" |
| AF3458 | \$1.22 | AF3458P | \$1.30 | 3/4" | 5/8" |
| AF3434 | \$1.22 | AF3434P | \$1.30 | 3/4" | 3/4" |



Cross Barb

Used in fluid applications requiring the connection of four hoses. Commonly called a junction fitting.

| PART # | | | | HOSE BARB |
|--------|-----------|------|-----------|-----------|
| NYLON | PRICE ea. | POLY | PRICE ea. | |
| X14 | \$0.96 | X14P | \$1.07 | 1/4" |



Flat Seat Hose Barb

Used with swivel nut B3400 and washer W406 shown in this catalog. Combining the three pieces allows for a swivel connection of common size hoses.

| PART # | | | | HOSE BARB |
|--------|-----------|--------|-----------|------------------|
| NYLON | PRICE ea. | POLY | PRICE ea. | BARB x FLAT SEAT |
| C1800 | \$0.62 | C1800P | \$0.66 | 1/8" |
| C1400 | \$0.47 | C1400P | \$0.65 | 1/4" |
| C3800 | \$0.46 | C3800P | \$0.66 | 3/8" |
| C1200 | \$0.47 | C1200P | \$0.66 | 1/2" |
| C5800 | \$0.46 | C5800P | \$0.66 | 5/8" |
| C3400 | \$0.47 | C3400P | \$0.67 | 3/4" |



Reducer Bushing

Used in fluid plumbing applications to connect a Female NPT thread to a reduced size of a Male NPT fitting.

| PART # | | | | THREAD | THREAD |
|----------|-----------|-----------|-----------|------------|------------|
| NYLON | PRICE ea. | POLY | PRICE ea. | Male NPT x | Female NPT |
| RB1418 | \$0.83 | RB1418P | \$0.96 | 1/4" | 1/8" |
| RB3818 | \$0.86 | RB3818P | \$0.98 | 3/8" | 1/8" |
| RB3814 | \$0.84 | RB3814P | \$0.96 | 3/8" | 1/4" |
| RB1218 | \$1.30 | RB1218P | \$1.38 | 1/2" | 1/8" |
| RB1214 | \$0.89 | RB1214P | \$1.00 | 1/2" | 1/4" |
| RB1238 | \$0.87 | RB1238P | \$1.00 | 1/2" | 3/8" |
| RB3418 | \$0.96 | RB3418P | \$1.06 | 3/4" | 1/8" |
| RB3414 | \$1.15 | RB3414P | \$1.27 | 3/4" | 1/4" |
| RB3438 | \$1.22 | RB3438P | \$1.24 | 3/4" | 3/8" |
| RB3412 | \$0.90 | RB3412P | \$1.05 | 3/4" | 1/2" |
| RB1012 | \$1.61 | RB1012P | \$1.63 | 1" | 1/2" |
| RB1034 | \$1.11 | RB1034P | \$1.13 | 1" | 3/4" |
| RB11434 | \$1.99 | RB11434P | \$2.16 | 1-1/4" | 3/4" |
| RB1141 | \$1.90 | RB1141P | \$2.09 | 1-1/4" | 1" |
| RB11234 | \$2.19 | RB11234P | \$2.31 | 1-1/2" | 3/4" |
| RB1121 | \$2.15 | RB1121P | \$2.28 | 1-1/2" | 1" |
| RB112114 | \$1.91 | RB112114P | \$2.67 | 1-1/2" | 1-1/4" |
| RB2001 | \$3.83 | RB2001P | \$3.88 | 2" | 1" |
| RB200114 | \$2.92 | RB200114P | \$2.95 | 2" | 1-1/4" |
| RB200112 | \$2.63 | RB200112P | \$2.67 | 2" | 1-1/2" |
| RB300200 | \$4.70 | RB300200P | \$6.63 | 3" | 2" |



Elbow

Used in fluid plumbing applications to connect to Male NPT fittings at 90 degrees.

| PART # | | | | THREAD |
|--------|-----------|---------|-----------|-----------------------------------|
| NYLON | PRICE ea. | POLY | PRICE ea. | Female NPT x 90 DEGREE Female NPT |
| ELF12 | \$2.63 | ELF12P | \$2.95 | 1/2" |
| ELF34 | \$2.99 | ELF34P | \$3.30 | 3/4" |
| ELF100 | \$4.25 | ELF100P | \$4.47 | 1" |
| ELF114 | \$5.76 | ELF114P | \$6.14 | 1-1/4" |
| ELF112 | \$6.85 | ELF112P | \$7.75 | 1-1/2" |
| ELF200 | \$10.04 | ELF200P | \$10.41 | 2" |



Coupling

Used in fluid plumbing applications to connect two Male NPT fittings.

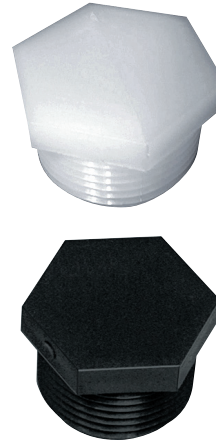
| PART # | | | | THREAD |
|---------|-----------|----------|-----------|-------------|
| NYLON | PRICE ea. | POLY | PRICE ea. | Female NPT |
| | | FTC1800P | \$3.73 | 1/8" |
| FTC14 | \$4.01 | FTC14P | \$4.23 | 1/4" |
| FTC38 | \$4.01 | | | 3/8" |
| FTC12 | \$2.78 | FTC12P | \$2.92 | 1/2" |
| FTC34 | \$3.38 | FTC34P | \$3.42 | 3/4" |
| FTC3412 | \$2.76 | | | 3/4" x 1/2" |
| FTC100 | \$3.84 | FTC100P | \$3.89 | 1" |
| FTC114 | \$5.40 | FTC114P | \$5.46 | 1-1/4" |
| FTC112 | \$6.44 | FTC112P | \$6.51 | 1-1/2" |
| FTC200 | \$9.50 | FTC200P | \$9.62 | 2" |



Plug

Use in conjunction with a hose clamp and quality thread sealant.

| PART # | | | | THREAD |
|--------|-----------|--------|-----------|----------------|
| NYLON | PRICE ea. | POLY | PRICE ea. | Male NPT x HEX |
| F1800 | \$0.55 | F1800P | \$0.62 | 1/8" |
| F1400 | \$0.60 | F1400P | \$0.62 | 1/4" |
| F3800 | \$0.63 | F3800P | \$0.65 | 3/8" |
| F1200 | \$0.64 | F1200P | \$0.66 | 1/2" |
| F3400 | \$0.68 | F3400P | \$0.70 | 3/4" |
| F1000 | \$0.70 | F1000P | \$0.75 | 1" |
| F1014 | \$1.04 | F1014P | \$1.15 | 1-1/4" |
| F112 | \$2.89 | F112P | \$3.01 | 1-1/2" |
| F200 | \$3.52 | | | 2" |



Nipple

Used in fluid plumbing application to connect two Female NPT fittings.

| PART # | | | | THREAD |
|--------|-----------|--------|-----------|---------------------|
| NYLON | PRICE ea. | POLY | PRICE ea. | Male NPT x Male NPT |
| M1800 | \$0.55 | M1800P | \$0.62 | 1/8" |
| M1400 | \$0.60 | M1400P | \$0.70 | 1/4" |
| M3800 | \$0.63 | M3800P | \$0.73 | 3/8" |
| M1200 | \$0.65 | M1200P | \$0.75 | 1/2" |
| M3400 | \$0.70 | M3400P | \$0.85 | 3/4" |
| M1000 | \$1.11 | M1000P | \$1.25 | 1" |
| M1140 | \$2.06 | M1140P | \$2.14 | 1-1/4" |
| M1120 | \$2.50 | M1120P | \$2.80 | 1-1/2" |
| M2000 | \$3.60 | M2000P | \$4.07 | 2" |



Reducing Nipple

Used in fluid plumbing application to connect two Female NPT fittings.

| PART # | | | | THREAD | |
|---------|-----------|----------|-----------|---------------------|-----------|
| NYLON | PRICE ea. | POLY | PRICE ea. | Male NPT x Male NPT | |
| RM1438 | \$0.64 | RM1438P | \$0.66 | 1/4" | 3/8" |
| RM3818 | \$0.75 | | | 3/8" | 1/8" |
| RM3812 | \$0.68 | RM3812P | \$0.69 | 3/8" | 1/2" |
| RM38116 | \$0.68 | RM38116P | \$0.69 | 3/8" | 11/16" UN |
| RM12116 | \$0.68 | RM12116P | \$0.69 | 1/2" | 11/16" UN |
| RM1214 | \$0.64 | RM1214P | \$0.68 | 1/2" | 1/4" |
| RM3438 | \$0.66 | RM3438P | \$0.70 | 3/4" | 3/8" |
| RM3412 | \$0.68 | RM3412P | \$0.72 | 3/4" | 1/2" |
| RM34116 | \$0.72 | RM34116P | \$0.77 | 3/4" | 11/16" UN |
| RM1141 | \$1.62 | RM1141P | \$2.16 | 1-1/4" | 1" |



Tee

Used in fluid plumbing applications requiring the connection of three fittings or pipes all having Male NPT threads.

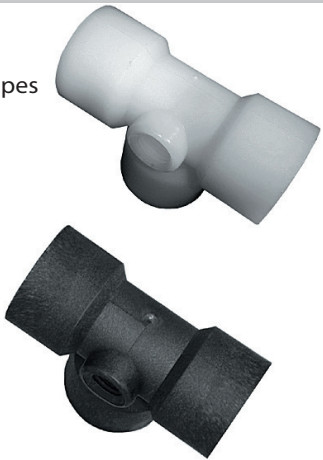
| PART # | | | | THREAD | |
|--------|-----------|--------|-----------|------------|--|
| NYLON | PRICE ea. | POLY | PRICE ea. | Female NPT | |
| TT14 | \$3.52 | TT14P | \$3.74 | 1/4" | |
| TT12 | \$3.35 | TT12P | \$3.85 | 1/2" | |
| TT34 | \$4.67 | TT34P | \$4.79 | 3/4" | |
| TT100 | \$5.94 | TT100P | \$6.29 | 1" | |
| TT114 | \$7.62 | TT114P | \$7.97 | 1-1/4" | |
| TT112 | \$9.17 | TT112P | \$9.80 | 1-1/2" | |
| TT200 | \$12.54 | TT200P | \$12.97 | 2" | |
| | | TT300P | \$54.50 | 3" | |



Tee with Gauge Port

Used in fluid plumbing applications requiring the connection of three fittings or pipes all having Male NPT threads. Special port extends from center of body for a gauge.

| PART # | | | | THREAD | PORT |
|---------|-----------|----------|-----------|------------|------|
| NYLON | PRICE ea. | POLY | PRICE ea. | Female NPT | |
| TT1218 | \$6.00 | TT1218P | \$6.50 | 1/2" | 1/8" |
| TT1214 | \$6.00 | TT1214P | \$6.50 | 1/2" | 1/4" |
| TT3418 | \$8.00 | TT3418P | \$8.50 | 3/4" | 1/8" |
| TT3414 | \$8.00 | TT3414P | \$8.50 | 3/4" | 1/4" |
| TT10014 | \$10.00 | TT10014P | \$10.50 | 1" | 1/4" |
| TT11414 | \$10.50 | | | 1-1/4" | 1/4" |
| TT11214 | \$10.75 | | | 1-1/2" | 1/4" |



Street Elbow

Used in fluid plumbing applications to connect a Female NPT fitting and a Male NP' at 90 degrees. This fitting is very useful when working space is a minimum.

| PART # | | | | THREAD | THREAD |
|--------|-----------|---------|-----------|----------------------|------------|
| NYLON | PRICE ea. | POLY | PRICE ea. | Male NPT x 90 Degree | Female NPT |
| SE14 | \$2.83 | SE14P | \$3.05 | 1/4" | 1/4" |
| SE38 | \$2.88 | SE38P | \$3.10 | 3/8" | 3/8" |
| SE12 | \$2.93 | SE12P | \$3.15 | 1/2" | 1/2" |
| SE1234 | \$3.05 | SE1234P | \$3.25 | 1/2" | 3/4" |
| SE34 | \$3.40 | SE34P | \$3.60 | 3/4" | 3/4" |
| SE100 | \$4.47 | SE100P | \$4.64 | 1" | 1" |
| SE114 | \$6.13 | SE114P | \$6.38 | 1-1/4" | 1-1/4" |
| SE112 | \$7.55 | SE112P | \$7.80 | 1-1/2" | 1-1/2" |
| SE200 | \$8.05 | SE200P | \$8.46 | 2" | 2" |



GARDEN HOSE FITTINGS

Adapter

Garden Hose fitting used to connect a Female GHT fitting to a Male NPT fitting.

| PART # | | | | THREAD | THREAD |
|--------|-----------|--------|-----------|----------------------------|--------|
| NYLON | PRICE ea. | POLY | PRICE ea. | 3/4" Male GHT x Female NPT | |
| G3412 | \$1.83 | G3412P | \$2.04 | 3/4" | 1/2" |
| G3434 | \$1.81 | G3434P | \$2.02 | 3/4" | 3/4" |



Adapter

Garden Hose fitting used to connect a Female NPT fitting to a Male GHT fitting.

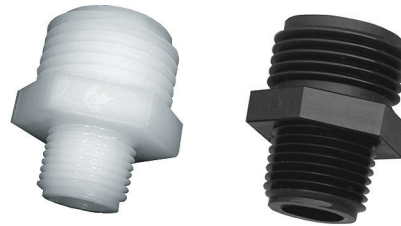
| PART # | | | | THREAD | THREAD |
|--------|-----------|--------|-----------|----------------------------|--------|
| NYLON | PRICE ea. | POLY | PRICE ea. | Male NPT x 3/4" Female GHT | |
| H3434 | \$1.79 | H3434P | \$2.00 | 3/4" | 3/4" |



Adapter

Garden Hose fitting used to connect two female fittings.

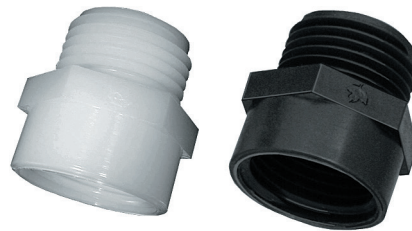
| PART # | | | | THREAD | THREAD |
|--------|-----------|---------|-----------|---------------------|---------------|
| NYLON | PRICE ea. | POLY | PRICE ea. | Male GHT x Male NPT | |
| E3412 | \$0.68 | E3412P | 0.72 | 3/4" | 1/2" |
| E3438 | \$1.22 | E3438P | \$1.36 | 3/4" | 3/8" |
| E3434 | \$0.67 | E3434P | \$0.84 | 3/4" | 3/4" |
| EE3434 | \$0.88 | EE3434P | \$0.92 | 3/4" | 3/4" Male GHT |



Adapter

Garden Hose fitting used to connect a Female GHT to a Male GHT fitting. Female GHT requires a W 406 washer.

| PART # | | | | THREAD | THREAD |
|--------|-----------|--------|-----------|---------------------------------|--------|
| NYLON | PRICE ea. | POLY | PRICE ea. | 3/4" Male GHT x 3/4" Female GHT | |
| I3434 | \$1.77 | I3434P | \$1.99 | 3/4" | 3/4" |



Coupling

Garden Hose fitting used to connect a Male GHT to a Male NPT fitting. Female GHT requires a W 406 washer.

| PART # | | | | THREAD | THREAD |
|--------|-----------|--------|-----------|------------------------------|--------|
| NYLON | PRICE ea. | POLY | PRICE ea. | 3/4" Female GHT x Female NPT | |
| J3412 | \$1.82 | J3412P | \$2.03 | 3/4" | 1/2" |



Cap

Female thread x Closed end. Requires W 406 washer.

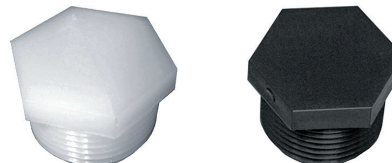
| PART # | | | | THREAD | |
|--------|-----------|---------|-----------|-------------------------|--|
| NYLON | PRICE ea. | POLY | PRICE ea. | Female GHT & Female NPS | |
| N3400 | \$0.73 | N3400P | \$0.75 | 3/4" Female GHT | |
| N3400F | \$0.73 | N3400FP | \$0.75 | 3/4" Female NPS | |



Plug

Garden Hose fitting used to plug off a Female NPT fitting.

| PART # | | | | THREAD | |
|----------|-----------|-----------|-----------|---------------------|--|
| NYLON | PRICE ea. | POLY | PRICE ea. | 3/4" Male GHT x HEX | |
| F3400GHT | \$0.58 | F3400GHTP | \$0.70 | 3/4" | |



Tee Adapter

Garden Hose fitting used to connect 3/4" Female GHT fitting to two hoses.

| PART # | | | | THREAD | HOSE BARB |
|---------|-----------|----------|-----------|----------------------|-----------|
| NYLON | PRICE ea. | POLY | PRICE ea. | Male GHT x HOSE BARB | |
| MT3438G | \$1.19 | MT3438GP | \$1.63 | 3/4" | 3/8" |
| MT3412G | \$1.26 | MT3412GP | \$1.70 | 3/4" | 1/2" |
| MT3434G | \$1.37 | MT3434GP | \$1.80 | 3/4" | 3/4" |



Adapter

Garden Hose fitting used to connect 3/4" Female GHT fitting to a hose.

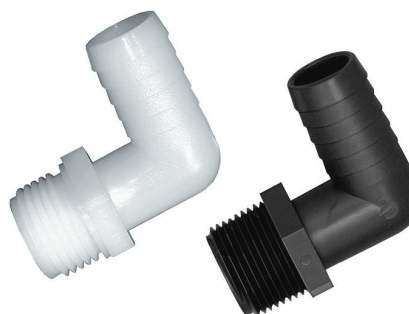
| PART # | | | | THREAD | HOSE BARB |
|--------|-----------|--------|-----------|---------------------------|-----------|
| NYLON | PRICE ea. | POLY | PRICE ea. | 3/4" Male GHT x Hose Barb | |
| D3414 | \$0.64 | D3414P | \$0.72 | 3/4" | 1/4" |
| D3438 | \$0.66 | D3438P | \$0.72 | 3/4" | 3/8" |
| D3412 | \$0.67 | D3412P | \$0.77 | 3/4" | 1/2" |
| D3458 | \$0.69 | D3458P | \$0.77 | 3/4" | 5/8" |
| D3434 | \$0.75 | D3434P | \$0.76 | 3/4" | 3/4" |
| D3410 | \$0.83 | D3410P | \$0.84 | 3/4" | 1" |



Elbow

Garden Hose fitting used to connect 3/4" Female GHT to a hose at 90 degrees.

| PART # | | | | THREAD | HOSE BARB |
|---------|-----------|----------|-----------|---------------------------|-----------|
| NYLON | PRICE ea. | POLY | PRICE ea. | 3/4" Male GHT x 90 degree | |
| EL3438G | \$0.88 | EL3438GP | \$0.90 | 3/4" | 3/8" |
| EL3412G | \$0.88 | EL3412GP | \$0.89 | 3/4" | 1/2" |
| EL3458G | \$0.98 | EL3458GP | \$1.00 | 3/4" | 5/8" |
| EL3434G | \$1.02 | EL3434GP | \$1.04 | 3/4" | 3/4" |
| EL3410G | \$1.04 | EL3410GP | \$1.05 | 3/4" | 1" |



Reducing Nipple

Garden Hose fitting used to connect two Female PT fittings.

| PART # | | | | THREAD | |
|----------|-----------|-----------|-----------|-----------------|-----------|
| NYLON | PRICE ea. | POLY | PRICE ea. | MALE GHT X MALE | |
| RM34116G | \$0.77 | RM34116GP | \$0.78 | 3/4" | 11/16" UN |



Swivel Nut

Garden Hose fitting used to connect a hose using a C series fitting with a washer.

| PART # | | | | THREAD | |
|--------|-----------|---------|-----------|-----------------|--|
| NYLON | PRICE ea. | POLY | PRICE ea. | 3/4" Female GHT | |
| B3400 | \$0.51 | B3400P | \$0.68 | 3/4" Female GHT | |
| B3400F | \$0.54 | B3400FP | \$0.68 | 3/4" Female NPS | |



Washers

Vinyl Garden Hose washer. Used with all 3/4" Female GHT fittings in this catalog.

| PART # | PRICE ea. | DESCRIPTION |
|---------|-----------|--|
| W406 | \$0.12 | Vinyl Garden Hose Washer |
| W40650S | \$1.06 | Vinyl Garden Hose Washer with 50 mesh screen |



3-Piece Barb Assembly

Garden Hose fitting with swivel connection. Used to connect 3/4" Female GHT to a hose. Washer is vinyl in both nylon and poly assemblies.

| PART # | | | | SWIVEL | HOSE BARB | WASHER |
|--------|-----------|---------|-----------|--------|-----------|--------|
| NYLON | PRICE ea. | POLY | PRICE ea. | | | |
| B3414W | \$1.45 | B3414WP | \$1.50 | B3400 | 1/4" | W 406 |
| B3438W | \$1.44 | B3438WP | \$1.51 | B3400 | 3/8" | W 406 |
| B3412W | \$1.45 | B3412WP | \$1.80 | B3400 | 1/2" | W 406 |
| B3458W | \$1.44 | B3458WP | \$1.78 | B3400 | 5/8" | W 406 |
| B3434W | \$1.45 | B3434WP | \$1.80 | B3400 | 3/4" | W 406 |



Garden Hose Shutoff Valves

Single and double garden hose valves with 3/4" GHT. 100 PSI maximum operating pressure. ABS construction.



| PART # | PRICE ea. | DESCRIPTION |
|---------|-----------|---|
| G3434V | \$5.12 | 3/4" Female GHT (inlet) x 3/4" Male GHT (1 outlet) |
| G3434YV | \$7.12 | 3/4" Female GHT (inlet) x 3/4" Male GHT (2 outlets) |



Garden Hose Couplings

Polypropylene Garden Hose Couplings used to connect a Female GHT to a Male GHT

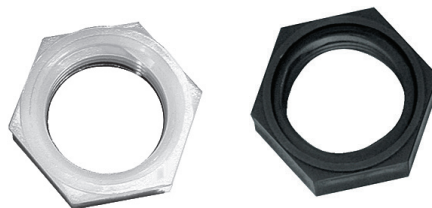
| PART # | SIZE & DESCRIPTION | PRICE ea. |
|----------|---------------------------------------|-----------|
| GLP075AG | 3/4" Female GHT x 3/4" Male Adapter | \$5.62 |
| GLP075BG | 3/4" Male GHT x 3/4" Female Adapter | \$11.72 |
| GLP075DG | 3/4" Female GHT x 3/4" Female Coupler | \$11.72 |
| GLP075FG | 3/4" Male GHT x 3/4" Male Adapter | \$5.62 |

Use either of the valve connectors as a quick shutoff at the end of any garden hose.

Hex Nut

Used to lock nozzle fitting in this catalog to Boom Clamp fittings.

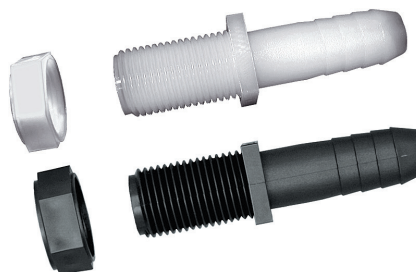
| PART # | | | | THREAD |
|--------|-----------|--------|-----------|------------------|
| NYLON | PRICE ea. | POLY | PRICE ea. | |
| N1116 | \$0.30 | N1116P | \$0.43 | 11/16" Female UN |



Straight Adapter

Thread 11/16" male UN x hose barb, nut included. Used on the terminating ends of spray boom or a boom using a manifold.

| PART # | | | | HOSE BARB SIZE |
|--------|-----------|--------|-----------|----------------|
| NYLON | PRICE ea. | POLY | PRICE ea. | |
| 3838D | \$0.88 | 3838DP | \$0.90 | 3/8" |
| 3812D | \$0.91 | 3812DP | \$0.93 | 1/2" |
| 3834D | \$1.12 | 3834DP | \$1.14 | 3/4" |



Elbow

Thread 11/16" male UN x hose barb, nut included. Used on the terminating ends of spray boom.

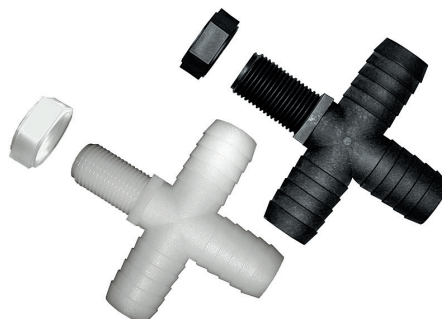
| PART # | | | | HOSE BARB SIZE |
|--------|-----------|--------|-----------|----------------|
| NYLON | PRICE ea. | POLY | PRICE ea. | |
| NTL38 | \$1.15 | NTL38P | \$1.18 | 3/8" |
| NTL12 | \$1.21 | NTL12P | \$1.23 | 1/2" |
| NTL34 | \$1.26 | NTL34P | \$1.28 | 3/4" |



Cross

Thread 11/16" male UN x hose barb, nut included. Used in the center of boom sections as a main feed line.

| PART # | | | | HOSE BARB SIZE |
|--------|-----------|-------|-----------|----------------|
| NYLON | PRICE ea. | POLY | PRICE ea. | |
| T38C | \$1.07 | T38CP | \$1.32 | 3/8" |
| T12C | \$1.26 | T12CP | \$1.36 | 1/2" |
| T34C | \$1.34 | T34CP | \$1.45 | 3/4" |



Tee

Thread 11/16" male UN x hose barb, nut included. Used between the main feed lines and termination end of boom sections.

| PART # | | | | HOSE BARB SIZE |
|--------|-----------|--------|-----------|----------------|
| NYLON | PRICE ea. | POLY | PRICE ea. | |
| NTT38 | \$1.25 | NTT38P | \$1.28 | 3/8" |
| NTT12 | \$1.28 | NTT12P | \$1.30 | 1/2" |
| NTT34 | \$1.55 | NTT34P | \$1.57 | 3/4" |



Spray Tip Blank

Blanks for Boom Drops, used when changing row spacing.

| PART # | | | | THREAD |
|--------|-----------|-------|-----------|------------------|
| NYLON | PRICE ea. | POLY | PRICE ea. | |
| 8028 | \$0.40 | 8028P | \$0.45 | 11/16" Female UN |



Male Adapter

Allows 1/4" female boom drops to be converted to accept 11/16" UN swivel cap.

| PART # | | | | THREAD |
|--------|-----------|--------|-----------|--------------------------------|
| NYLON | PRICE ea. | POLY | PRICE ea. | |
| NB164 | \$0.55 | NB164P | \$0.65 | 11/16" Male UN x 1/4" Male NPT |
| NB168 | \$0.58 | | | 11/16" Male UN x 1/8" Male NPT |



Boom Clamp

Boom Clamps fit all nozzle thread fittings in this catalog.

| PART # | | | | SIZE |
|--------|-----------|---------|-----------|------------------------------------|
| NYLON | PRICE ea. | POLY | PRICE ea. | |
| B111 | \$1.28 | B111P | \$1.40 | Fits 1" Round or Square Tubing |
| B11114 | \$1.36 | B11114P | \$1.49 | Fits 1 1/4" Round or Square Tubing |



Female Adapter

Allows 11/16" UN nozzle fittings in this catalog to be converted to accept 1/4" Male NPT flood tips.

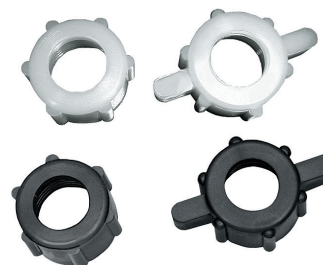
| PART # | | | | THREAD |
|--------|-----------|--------|-----------|------------------------------------|
| NYLON | PRICE ea. | POLY | PRICE ea. | |
| 1116A | \$1.01 | 1116AP | \$1.03 | 11/16" Female UN x 1/4" Female NPT |



Swivel Nut

For use with Male Adapter and all nozzle fittings in this catalog. Fastens spray tips to nozzle fittings.

| PART # | | | | THREAD |
|--------|-----------|--------|-----------|------------------|
| NYLON | PRICE ea. | POLY | PRICE ea. | |
| 8027 | \$0.39 | 8027P | \$0.45 | 11/16" Female UN |
| 8027W | \$0.58 | 8027WP | \$0.60 | |



Metering Barb

Used to run a line from spray boom to a gauge for monitoring boom pressure. Connects to Male Adapter and all nozzle fittings in this catalog with a 8027 swivel nut.

| PART # | | | | BARB SIZE |
|--------|-----------|--------|-----------|-----------|
| NYLON | PRICE ea. | POLY | PRICE ea. | |
| K8414 | \$0.44 | K8414P | \$0.45 | 1/4" |
| K8438 | \$0.47 | K8438P | \$0.48 | 3/8" |
| K8412 | \$0.49 | K8412P | \$0.50 | 1/2" |



Bulkhead Fitting

External Thread and nut are left hand threads.

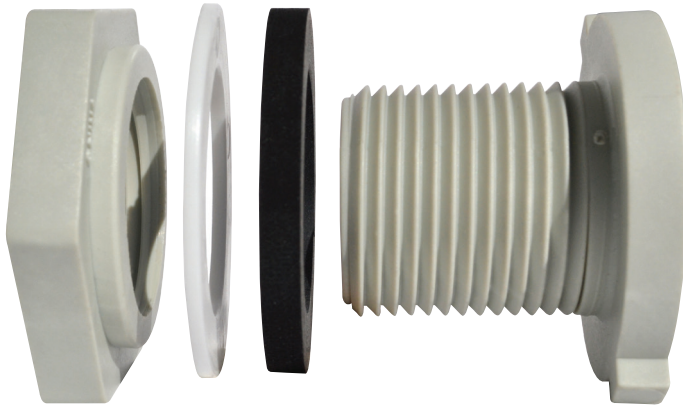
Internal Thread is FPT.

For use with tanks having a wall thickness of 1/16" to 1/2".

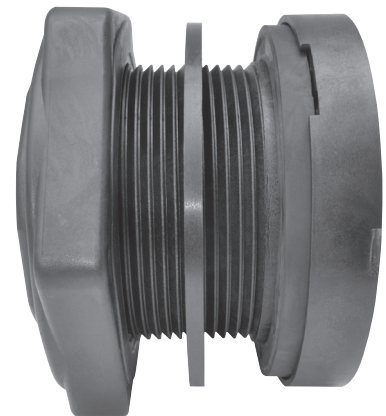
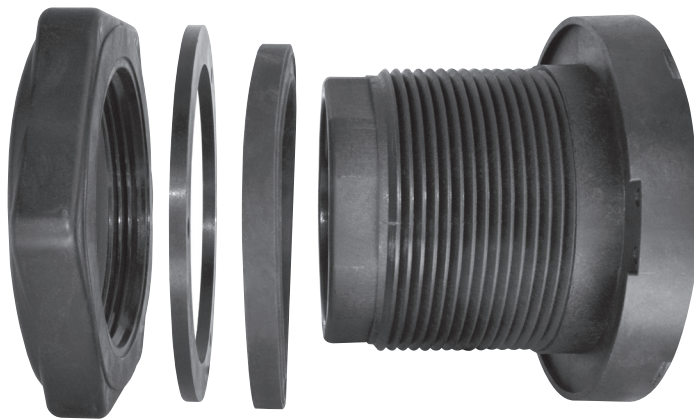
Material:

- Body and Nut are either Nylon (N) or Polypropylene (P)
- Friction washer is Polyethylene
- Sealing washer is either Buna (B), EPDM (E) or Santoprene.

Nylon, Buna and Polyethylene used in manufacturing are FDA approved grade.



| PART # | | | | | | THREAD | WASHER | HOLE SIZE |
|------------------|-----------|----------|---------------|-----------|----------|-------------------|--------|-----------|
| INTERNAL SEALING | | | | | | | | |
| NYLON | PRICE ea. | CTN. QTY | POLYPROPYLENE | PRICE ea. | CTN. QTY | | | |
| TF12NB | \$6.47 | 150 | TF12PB | \$6.47 | 150 | 1/2" Female NPT | BUNA | 1-1/4" |
| TF12NE | \$6.14 | 150 | TF12PE | \$6.14 | 150 | 1/2" Female NPT | EPDM | 1-1/4" |
| TF34NB | \$6.47 | 150 | TF34PB | \$6.47 | 150 | 3/4" Female NPT | BUNA | 1-3/8" |
| TF34NE | \$6.14 | 150 | TF34PE | \$6.14 | 150 | 3/4" Female NPT | EPDM | 1-3/8" |
| | | | TF100PE | \$7.80 | 100 | 1" Female NPT | EPDM | 1-3/4" |
| | | | TF125PE | \$9.50 | 100 | 1 1/4" Female NPT | EPDM | 2-1/4" |
| | | | TF150PE | \$13.60 | 60 | 1 1/2" Female NPT | EPDM | 3" |
| | | | TF200PE | \$13.60 | 60 | 2" Female NPT | EPDM | 3" |
| | | | TF300PE | \$42.50 | 18 | 3" Female NPT | EPDM | 4-1/2" |
| | | | TF400PE | \$110.50 | 2 | 4" Female NPT | EPDM | 5-3/4" |



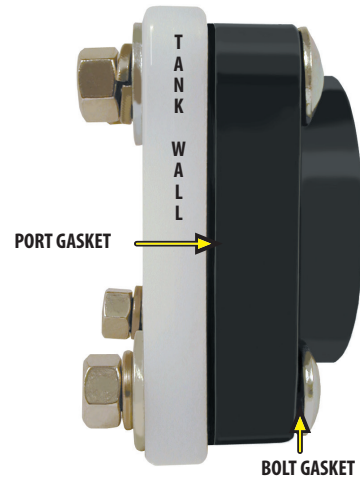
Outlet Flange (OF)

For use when access to inside of tank is available
Fits Tank Wall thickness from 1/4" - 1/2"

- Polypropylene Flanges
- Stainless Steel bolts, nuts & washers
- EPDM Gaskets

Sizes: 1-1/4", 1-1/2", 2" Standard Port, 2" Full Port

| PART # | DESCRIPTION | PRICE ea. |
|---------|-----------------------------|-----------|
| OF125 | 1-1/4" Female NPT Full Port | \$29.44 |
| OF150 | 1-1/2" Female NPT Full Port | \$29.44 |
| OF200FP | 2" Female NPT Full Port | \$33.79 |



Inside Bolt Seal Double Seal Flange (DS)

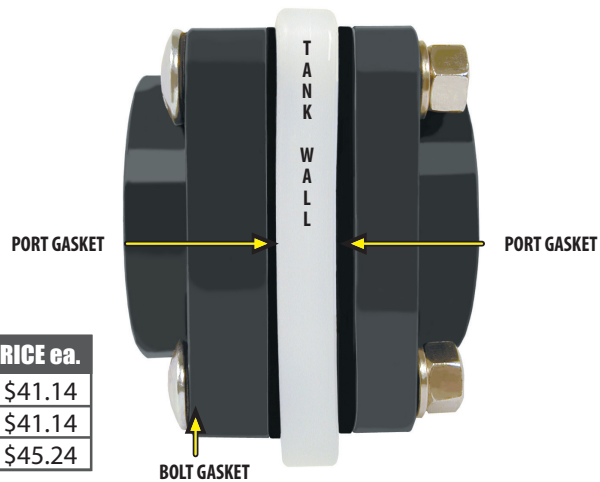
Nuts are tightened from outside of tank
Fits Tank Wall thickness from 1/4" - 1/2"

- Polypropylene Flanges
- Stainless Steel bolts, nuts & washers
- EPDM Gaskets

Sizes: 1-1/4", 1-1/2", 2" Standard Port, 2" Full Port

| PART # | INLET | x | OUTLET | PRICE ea. |
|---------|--------------|---|------------------|-----------|
| DS125 | 2" SP* | | 1-1/4" Full Port | \$41.14 |
| DS150 | 2" SP* | | 1-1/2" Full Port | \$41.14 |
| DS200FP | 2" Full Port | | 2" Full Port | \$45.24 |

*SP = 1 1/2" Port



Black Poly Top & Bowl In-Line Strainer

| PART # | DESCRIPTION | PRICE ea. |
|----------|--------------------------------|-----------|
| LST05050 | 1/2" Poly T-Strainer 50 Mesh | \$27.32 |
| LST05080 | 1/2" Poly T-Strainer 80 Mesh | \$27.32 |
| LST07550 | 3/4" Poly T-Strainer 50 Mesh | \$27.32 |
| LST07580 | 3/4" Poly T-Strainer 80 Mesh | \$27.32 |
| LST10050 | 1" Poly T-Strainer 50 Mesh | \$42.85 |
| LST10080 | 1" Poly T-Strainer 80 Mesh | \$42.85 |
| LST12550 | 1-1/4" Poly T-Strainer 50 Mesh | \$46.06 |
| LST12580 | 1-1/4" Poly T-Strainer 80 Mesh | \$46.06 |
| LST15050 | 1-1/2" Poly T-Strainer 50 Mesh | \$52.87 |
| LST15080 | 1-1/2" Poly T-Strainer 80 Mesh | \$52.87 |



- EPDM Gaskets
- Stainless Steel Screens

Replacement Gaskets & Screens Available

Black Poly Top & Clear Nylon Bowl In-Line Strainer

| PART # | DESCRIPTION | PRICE ea. |
|------------|--------------------------------|-----------|
| LSTM05050C | 1/2" Poly T-Strainer 50 Mesh | \$29.94 |
| LSTM05080C | 1/2" Poly T-Strainer 80 Mesh | \$29.94 |
| LSTM07550C | 3/4" Poly T-Strainer 50 Mesh | \$29.94 |
| LSTM07580C | 3/4" Poly T-Strainer 80 Mesh | \$29.94 |
| LSTM10050C | 1" Poly T-Strainer 50 Mesh | \$54.84 |
| LSTM10080C | 1" Poly T-Strainer 80 Mesh | \$54.84 |
| LSTM12550C | 1-1/4" Poly T-Strainer 50 Mesh | \$58.05 |
| LSTM12580C | 1-1/4" Poly T-Strainer 80 Mesh | \$58.05 |
| LSTM15050C | 1-1/2" Poly T-Strainer 50 Mesh | \$64.86 |
| LSTM15080C | 1-1/2" Poly T-Strainer 80 Mesh | \$64.86 |



- EPDM Gaskets
- Stainless Steel Screens

Replacement Gaskets & Screens Available

White Nylon Top & Clear Nylon Bowl In-Line Strainer

| PART # | DESCRIPTION | PRICE ea. |
|-------------|--------------------------------|-----------|
| LSTM05050NC | 1/2" Poly T-Strainer 50 Mesh | \$32.98 |
| LSTM05080NC | 1/2" Poly T-Strainer 80 Mesh | \$32.98 |
| LSTM07550NC | 3/4" Poly T-Strainer 50 Mesh | \$32.98 |
| LSTM07580NC | 3/4" Poly T-Strainer 80 Mesh | \$32.98 |
| LSTM10050NC | 1" Poly T-Strainer 50 Mesh | \$67.68 |
| LSTM10080NC | 1" Poly T-Strainer 80 Mesh | \$67.68 |
| LSTM12550NC | 1-1/4" Poly T-Strainer 50 Mesh | \$70.96 |
| LSTM12580NC | 1-1/4" Poly T-Strainer 80 Mesh | \$70.96 |
| LSTM15050NC | 1-1/2" Poly T-Strainer 50 Mesh | \$72.66 |
| LSTM15080NC | 1-1/2" Poly T-Strainer 80 Mesh | \$77.13 |

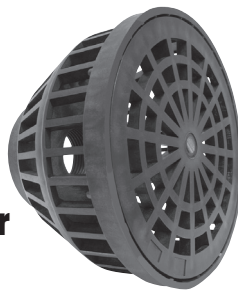


- EPDM Gaskets
- Stainless Steel Screens

Replacement Gaskets & Screens Available

Polypropylene Basket Suction Strainer

Polypropylene Strainer



| PART # | DESCRIPTION | PRICE ea. |
|--------|-------------------|-----------|
| SR150P | 1-1/2" Female NPT | \$12.44 |
| SR200P | 2" Female NPT | \$12.44 |
| SR300P | 3" Female NPT | \$21.24 |

Round Hole Steel Basket Strainer

Zinc Plated, with standard Pipe Threads



| PART # | DESCRIPTION | PRICE ea. |
|---------|-------------------|-----------|
| SR125SP | 1-1/4" Female NPT | \$19.02 |
| SR150SP | 1-1/2" Female NPT | \$19.02 |
| SR200SP | 2" Female NPT | \$23.02 |
| SR300SP | 3" Female NPT | \$33.38 |

Spray Components



Range of Product

Whether you're landscaping or out on the back 40, Green Leaf has the top quality fluid flow products and component parts to help you get the job done.

Attributes

Our extensive product line is focused on fluid flow & related components. This means Green Leaf is able to meet our customers complete needs.

Position

By trusting Green Leaf's 39 years of experience, you can be assured that your fluid flow needs are not only met, but places you in the position to succeed.

Your Success is Our Success!



Pressure Gauges

Standard Gauge

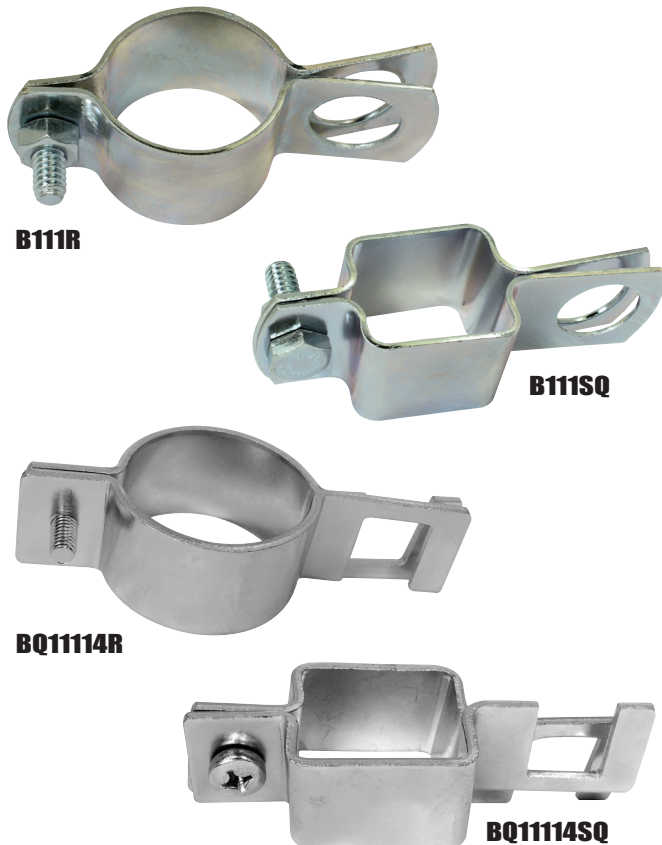
| PART # | DESCRIPTION | PRICE ea. |
|--------|-------------------|-----------|
| SG060 | 2" Gauge, 60 PSI | \$7.95 |
| SG100 | 2" Gauge, 100 PSI | \$7.95 |
| SG200 | 2" Gauge, 200 PSI | \$7.95 |
| SG400 | 2" Gauge, 400 PSI | \$7.95 |
| SG1004 | 4" Gauge, 100 PSI | \$21.37 |

Liquid Gauge

| PART # | DESCRIPTION | PRICE ea. |
|--------|-------------------------------|-----------|
| LG100 | 2-1/2" Liquid Filled, 100 PSI | \$16.31 |
| LG200 | 2-1/2" Liquid Filled, 200 PSI | \$16.31 |

Ammonia Gauge

| PART # | DESCRIPTION | PRICE ea. |
|--------|------------------------|-----------|
| AG060 | 2-1/2" Ammonia, 60 PSI | \$16.72 |



Steel Boom Clamps

Standard Clamps-Round

| PART # | DESCRIPTION | PRICE ea. |
|--------|-------------|-----------|
| B1134R | 3/4" | \$3.20 |
| B111R | 1" | \$3.20 |

Standard Clamps-Square

| PART # | DESCRIPTION | PRICE ea. |
|----------|-------------|-----------|
| B111SQ | 1" | \$3.20 |
| B11114SQ | 1-1/4" | \$3.20 |

Quick Clamps-Round

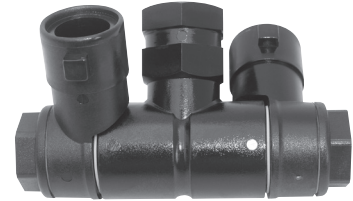
| PART # | DESCRIPTION | PRICE ea. |
|----------|-------------|-----------|
| BQ1134R | 3/4" | \$4.49 |
| BQ111R | 1" | \$4.49 |
| BQ11114R | 1-1/4" | \$4.49 |

Quick Clamps-Square

| PART # | DESCRIPTION | PRICE ea. |
|-----------|-------------|-----------|
| BQ1134SQ | 3/4" | \$4.49 |
| BQ111SQ | 1" | \$4.49 |
| BQ11114SQ | 1-1/4" | \$4.62 |
| BQ11112SQ | 1-1/2" | \$4.49 |

Nozzle Bodies

| DESCRIPTION | PART # | | PRICE ea. |
|---------------------------|----------|------|-----------|
| Swivel nozzle body, nylon | Y8247015 | 1/4" | \$13.81 |



| DESCRIPTION | PART # | | PRICE ea. |
|--|----------|------|-----------|
| Quick fit adapter, 1/4", nylon, QD adapter | Y8230021 | 1/4" | \$3.98 |



| DESCRIPTION | PART # | | PRICE ea. |
|--|----------|------|-----------|
| Dry boom nozzle body, 3/8", elbow barb | Y8231001 | 3/8" | \$4.66 |
| Dry boom nozzle body, 1/2", elbow barb | Y8231003 | 1/2" | \$4.66 |
| Dry boom nozzle body, 3/4", elbow barb | Y8231005 | 3/4" | \$4.66 |



| DESCRIPTION | PART # | | PRICE ea. |
|--------------------------------------|----------|------|-----------|
| Dry boom nozzle body, 3/8", tee barb | Y8231007 | 3/8" | \$4.66 |
| Dry boom nozzle body, 1/2", tee barb | Y8231009 | 1/2" | \$4.66 |
| Dry boom nozzle body, 3/4", tee barb | Y8231011 | 3/4" | \$4.66 |



| DESCRIPTION | PART # | | PRICE ea. |
|--|----------|------|-----------|
| Dry boom nozzle body, 3/8", cross barb | Y8231013 | 3/8" | \$4.66 |
| Dry boom nozzle body, 1/2", cross barb | Y8231015 | 1/2" | \$4.66 |
| Dry boom nozzle body, 3/4", cross barb | Y8231017 | 3/4" | \$4.66 |



BOOM COMPONENTS

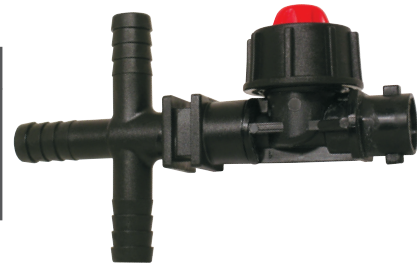
| DESCRIPTION | PART # | | PRICE ea. |
|--|----------|------|-----------|
| Dry boom nozzle body, 3/8", elbow, top diaphragm | Y8235019 | 3/8" | \$10.09 |
| Dry boom nozzle body, 1/2", elbow, top diaphragm | Y8235021 | 1/2" | \$10.09 |
| Dry boom nozzle body, 3/4", elbow, top diaphragm | Y8235023 | 3/4" | \$10.09 |



| DESCRIPTION | PART # | | PRICE ea. |
|--|----------|------|-----------|
| Dry boom nozzle body, 3/8", tee, top diaphragm | Y8235025 | 3/8" | \$10.09 |
| Dry boom nozzle body, 1/2", tee, top diaphragm | Y8235027 | 1/2" | \$10.09 |
| Dry boom nozzle body, 3/4", tee, top diaphragm | Y8235029 | 3/4" | \$10.09 |



| DESCRIPTION | PART # | | PRICE ea. |
|--|----------|------|-----------|
| Dry boom nozzle body, 3/8", cross barb, side diaphragm | Y8235013 | 3/8" | \$9.93 |
| Dry boom nozzle body, 1/2", cross barb, side diaphragm | Y8235015 | 1/2" | \$12.02 |
| Dry boom nozzle body, 3/4", cross barb, side diaphragm | Y8235017 | 3/4" | \$12.02 |



| DESCRIPTION | PART # | | PRICE ea. |
|---|----------|------|-----------|
| 1/2" pipe wet boom nozzle body, diaphragm, EPDM, .39" | Y8234007 | 1/2" | \$9.00 |
| 3/4" pipe wet boom nozzle body, diaphragm, EPDM, .39" | Y8234009 | 3/4" | \$10.47 |
| 1" pipe wet boom nozzle body, diaphragm, EPDM, .39" | Y8234051 | 1" | \$10.49 |



| DESCRIPTION | PART # | | PRICE ea. |
|---|----------|----|-----------|
| Rotary nozzle body, 3 way, diaphragm right, wet boom, EPDM, .39" port | Y8244138 | 1" | \$23.28 |



| DESCRIPTION | PART # | | PRICE ea. |
|--|----------|------|-----------|
| Single hose barb for Rotary to dry boom, 1/2", for .41" port | Y8294014 | 1/2" | \$1.76 |
| Single hose barb for Rotary to dry boom, 3/4", for .41" port | Y8294015 | 3/4" | \$1.76 |
| Single hose barb for Rotary to dry boom, 3/4" Hose ID, 1" Pipe OD, for .41" port | Y8294028 | 3/4" | \$2.24 |
| Single hose barb for Rotary to dry boom, 1", for .41" port | Y8294029 | 1" | \$2.24 |



| DESCRIPTION | PART # | | PRICE ea. |
|--|----------|------|-----------|
| Double hose barb for Rotary to dry boom, 1/2", for .41" port | Y8294017 | 1/2" | \$1.76 |
| Double hose barb for Rotary to dry boom, 3/4", for .41" port | Y8294018 | 3/4" | \$1.76 |
| Double hose barb for Rotary to dry boom, 3/4" Hose ID, 1" Pipe OD, for .41" port | Y8294030 | 3/4" | \$2.24 |
| Double hose barb for Rotary to dry boom, 1", for .41" port | Y8294031 | 1" | \$2.24 |





Y8253040



Y8253050



YG00002020

Winged Bayonet Caps

| DESCRIPTION | PART # | | PRICE ea. |
|---|------------|-------|-----------|
| Winged bayonet caps, ID, IS, DF, FL, 10 mm across flats | Y8253049 | black | \$1.43 |
| Winged bayonet caps, TR, ITR, poly FT, round | Y8253050 | black | \$1.43 |
| Winged bayonet caps, poly FT self aligning | Y8253051 | black | \$1.43 |
| Winged bayonet caps, closed | Y8253040 | black | \$1.43 |
| Winged bayonet caps, 8 mm/10 mm Universal | Y8253080 | black | \$1.43 |
| Replacement W B Cap gaskets | YG00002020 | black | \$1.43 |



Y8139002



Y8139003



Y8139011

Spray Tip Filters

| DESCRIPTION | PART # | | PRICE ea. |
|--|----------|-------|-----------|
| Nozzle filters, poly, stainless screen, 50 mesh | Y8139002 | blue | \$1.47 |
| Nozzle filters, poly, stainless screen, 100 mesh | Y8139003 | green | \$1.47 |
| Nozzle filters, poly, 50 mesh, stainless screen, w/ check valve | Y8139004 | blue | \$1.72 |
| Nozzle filters, poly, 100 mesh, stainless screen, w/ check valve | Y8139005 | green | \$1.72 |

| | | | |
|---|----------|-------|--------|
| Nozzle filters, brass, 50 mesh, stainless screen, w/ check valve | Y8139009 | brass | \$5.97 |
| Nozzle filters, brass, 100 mesh, stainless screen, w/ check valve | Y8139010 | brass | \$5.97 |
| Nozzle filters, brass, stainless screen, 50 mesh | Y8139011 | brass | \$5.25 |
| Nozzle filters, brass, stainless screen, 100 mesh | Y8139012 | brass | \$5.25 |

2-Way Solenoid Valves

Large Solenoid Valve

12-Volt DC Electric Boom Shutoff Valves have a 3/4" NPT Female inlet, 3/4" NPT male bypass outlet and a 1/2" NPT female boom outlet. This direct operating valve is designed for 100 PSI maximum operating pressure and 10GPM. (only 5 PSI pressure is lost @ 10 GPM)

- Draws 2 amps per valve at 12 volts.
- Viton seals and o-rings.
- Wetted parts are made of 430 SS and glass filled nylon.

| PART # | DESCRIPTION | PRICE ea. |
|--------|---------------------------------------|-----------|
| 2500B1 | Solenoid Shutoff Valve, Single | \$159.67 |
| 2352 | Repair Kit for 2500B-1 Solenoid Valve | \$43.64 |



2500B1

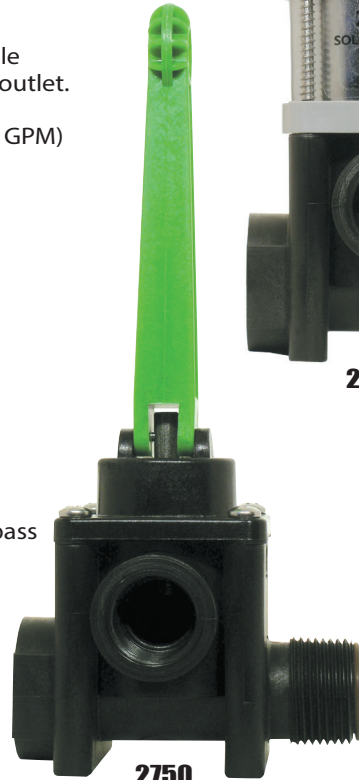
Manual Valve

2750 Manual Valve
This manual valve has a 3/4" NPT male and female inlet and bypass and a 1/2" NPT female boom outlet.

- 0-10 GPM, 175 PSI
- Viton Seals and o-rings.
- Wetted parts are made of 302 SS and glass filled nylon.

**The 2750 is a manual valve with a 1/4" NPT pump pressure point that needs to be drilled to function.*

| PART # | DESCRIPTION | PRICE ea. |
|--------|----------------------|-----------|
| 2750 | Manual Shutoff Valve | \$113.38 |

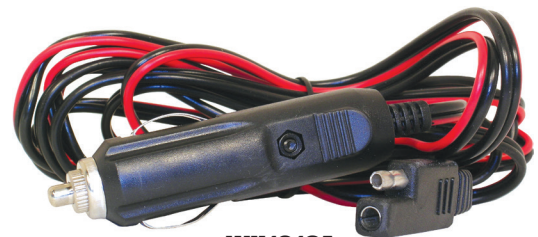


2750

Wiring Harnesses

- 96" wiring harness with on/off switch & 2-pin connector
- 12 volt

| PART # | DESCRIPTION | PRICE ea. |
|---------|--|-----------|
| WH101CA | 12V with car adapter connection 7 amp tube fuse — 20 gauge wire | \$8.66 |
| WH102BC | 12V with 15 amp battery clips no fuse — 20 gauge wire | \$8.66 |
| WH104 | 12V with car adapter & 15 amp battery clip 7 amp blade fuse — 18 gauge wire | \$18.63 |
| WH105 | 12V with car adapter & 15 amp battery clip 15 amp mini blade fuse — 16 gauge wire | \$21.01 |
| WH96EX | 12V - 96" Wiring Harness Extension 18 gauge wire | \$12.32 |



WH101CA



WH102BC

Suction Filters

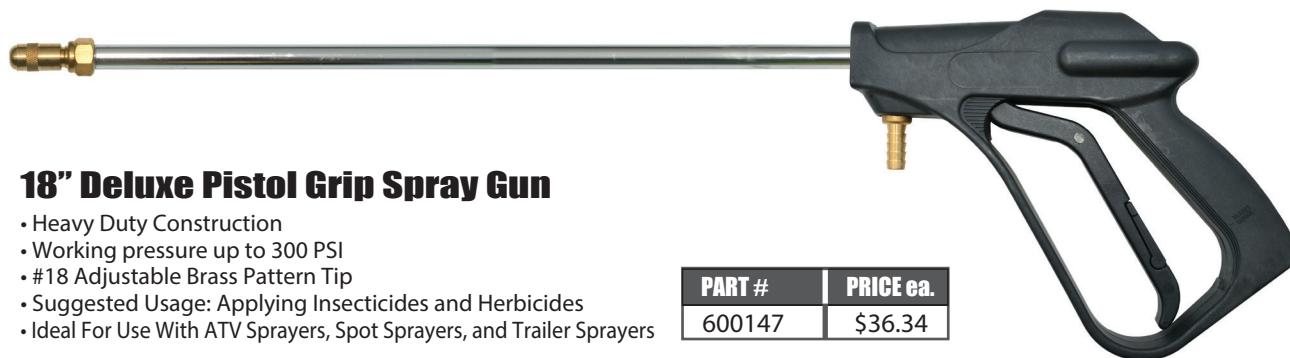


| DESCRIPTION | PART # | PRICE ea. |
|--|--------|-----------|
| Suction Filter for detergents; 3/8" barb | 600146 | \$1.47 |



Hose Drop

| DESCRIPTION | PART # | PRICE ea. |
|--|----------|-----------|
| Hose Drop Tube Assembly; 15"; Bayonet Connection | Y8251000 | \$15.34 |
| Hose Drop Tube Assembly; 24"; Bayonet Connection | Y8251002 | \$15.46 |



18" Deluxe Pistol Grip Spray Gun

- Heavy Duty Construction
- Working pressure up to 300 PSI
- #18 Adjustable Brass Pattern Tip
- Suggested Usage: Applying Insecticides and Herbicides
- Ideal For Use With ATV Sprayers, Spot Sprayers, and Trailer Sprayers

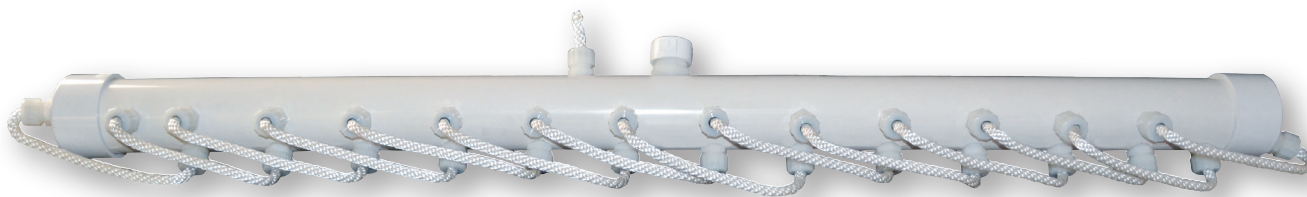
| PART # | PRICE ea. |
|--------|-----------|
| 600147 | \$36.34 |



Spot Spray Gun

- Spray Gun with #18 orifice
- 18" overall length
- 3/8" hose barb connection
- Filter in handle
- Working pressure 200 PSI

| PART # | PRICE ea. |
|--------|-----------|
| 600227 | \$17.41 |



String Wing

- Wick arrangement gives a double wipe which means an even application rate and a better kill.
- 5' sections help reduce wicks from drying out when applying on uneven ground where the wick bar is constantly tilted.
- Build any length applicator you want with the "String Wing", the convenient 5' sections allow you to build 10', 15', 20', etc. sections.
- The special design of alternating wicks on the end cap means when you put "String Wings" end to end you get full swath coverage; (No spots missed).
- Each "String Wing" has its own 1 1/4" fill opening and a breather to prevent vapor locking or pressure surges due to weather temperatures.

| PART # | PRICE ea. |
|--------|-----------|
| SW | \$195.66 |

**Use with Your
Choice of Herbicide
& Wick Away
Unwanted Weeds**



Bucket Mount

| PART # | PRICE ea. |
|--------|-----------|
| SWBM | \$146.25 |

NEW



Reece Hitch Mount

Front or Rear Mount for 2" Receivers

| PART # | PRICE ea. |
|--------|-----------|
| SWHM | \$162.50 |

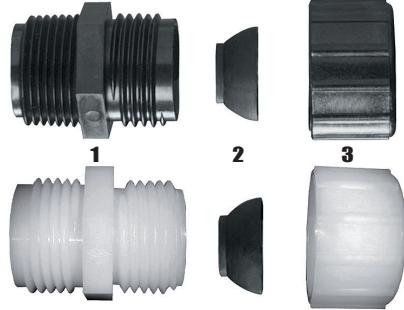
NEW

**Easily Mounts
String Wing
to the Front
of Any ATV**

*STRING WING SOLD SEPARATELY



EG3434



Rope Wick Fitting

| REF# | PART # | | | | DESCRIPTION |
|---------|--------|-----------|--|-----------|--------------------------------|
| | NYLON | PRICE ea. | POLY | PRICE ea. | |
| 1 | E3434 | \$0.67 | E3434P | \$0.84 | 3/4" Male GHT X 3/4" MPT Nylon |
| 2 | W407 | \$0.49 | | | Cone Washer |
| 3 | B3450 | \$0.49 | B3450P | \$0.67 | 3/4" Female GHT x 1/2" opening |
| 3 | B3458 | \$0.49 | B3458P | \$0.67 | 3/4" Female GHT x 5/8" |
| 1, 2, 3 | E3434C | \$1.18 | E3434CP | \$2.37 | 1ea. E3434, B3450 & W407 |
| EG3434 | EG3434 | \$1.22 | Glue on Body. Designed to fit over 3" schedule 40 PVC pipe only. | | |



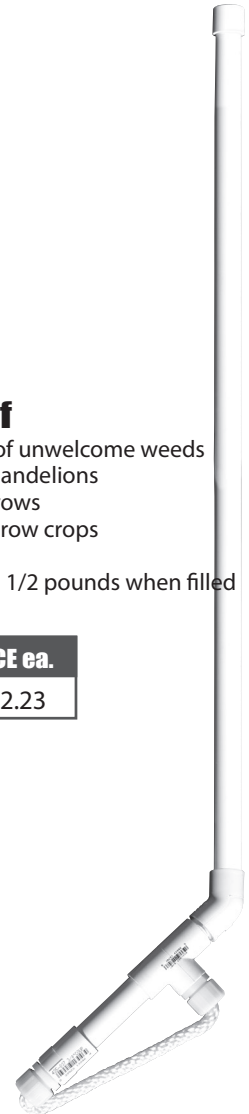
Wick Replacement Kit

| PART # | DESCRIPTION | PRICE ea. |
|--------|--|-----------|
| WK1 | Wick replacement for String Wing, includes 14 each 18" wicks with 28 each B3450 fittings and W407 cone washers installed. | \$61.48 |
| WK2 | Wick Replacement Kit for a 20' wick bar. Parallel wick rows. Includes 50 each 18" wicks with 100 ea. B3450 fittings & W407 cone washers installed. | \$217.55 |
| WK3 | Wick Replacement includes 50 each 18" wicks. No fittings or cone washers. Wick ends are heat sealed. | \$146.04 |
| WK4 | 1 - 18" Wick; 2 - B3450 fittings and 2 - W407 cone washers. Wick ends are heat sealed. | \$4.91 |
| WK5 | String Wing Do-It-Yourself Kit - 5ft. Includes 27-EG3434; 2-SW300CAP DWF; 1-WK1; 1-SW1140CAP; 1-M1140; 1-SW Breather | \$103.28 |
| WK10 | String Wing Do-It-Yourself Kit - 10ft. Includes 54-EG3434; 2-SW300CAP DWF; 2-WK1; 1-SW1140CAP; 1-M1140; 1-SW Breather | \$213.79 |
| WK15 | String Wing Do-It-Yourself Kit - 15ft. Includes 81-EG3434; 2-SW300CAP DWF; 3-WK1; 1-SW1140CAP; 1-M1140; 1-SW Breather | \$320.69 |
| WK20 | String Wing Do-It-Yourself Kit - 20ft. Includes 108-EG3434; 2-SW300CAP DWF; 4-WK1; 1-SW1140CAP; 1-M1140; 1-SW Breather | \$427.58 |

Weed Thief

- Robs garden of unwelcome weeds
- Rids lawn of dandelions
- Cleans fence rows
- Kills weeds in row crops
- Easy to use
- Lightweight 2 1/2 pounds when filled
- Economical

| PART # | PRICE ea. |
|--------|-----------|
| WT1 | \$32.23 |



Adapter

This fitting was used in early model rope wick applicators. Requires the use of N1116 Nut and either an "O" ring for wick bar use or a W406 washer if used as a tank fitting. ("O" ring are special order)

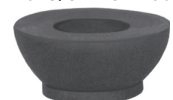


| PART # | | | | THREAD |
|--------|-----------|--------|-----------|--------|
| NYLON | PRICE ea. | POLY | PRICE ea. | |
| 1116B | \$0.60 | 1116BP | \$0.77 | 11/16" |

Cone Washer

Used for sealing wick in fitting. Fits 1/2" or 5/8" wick material.

| PART # | PRICE ea. |
|--------|-----------|
| W407 | \$0.49 |





GREENLEAF INCORPORATED

*Quality, Service & Commitment...
Is Never Compromised.*

Mission: To work hard, be passionate & enjoy providing superior products while meeting or exceeding our customers' needs & expectations. With effective communication & exceptional service we will build a relationship with our suppliers & customers based on trust and loyalty.

Pledge: It is our promise to adhere to the below principles recognizing our responsibility to our Customer, our People and our Business.

Customer - Green Leaf pledges to bring our expertise in product engineering, manufacturing, distribution and customer service to our diverse line of fluid flow parts and to deliver superior products, accurately and on time while maintaining a fair price.

Employee - Green Leaf pledges to maintain a safe and inviting environment for all employees while providing fair wages and the opportunity to excel and grow. We value honesty, integrity and mutual respect; each person will be considered an individual; we will succeed as a team.

Business - Green Leaf pledges to make a sound profit. We must create reserves, carry on research, develop programs and pay for mistakes. Equipment and machines will need purchased, facilities built and new products launched. By achieving these things we will continue to increase sales and profits.

PRICING

All prices are subject to change without notice. Orders will be invoiced at current prices on the date shipment is made. All prices are F.O.B. Green Leaf®, Inc.

TERMS

An invoice is a contract in which Green Leaf®, Inc. terms will prevail. Unless otherwise stated, payment terms are 2% 10 days net 30 days, (D.O.I.). Green Leaf® Inc. reserves the right to place a customer on credit hold if deemed necessary. Up to a 5% service charge will be added per month on all past due accounts.

ORDERING

Please order by Green Leaf's® part number.
US Orders: A \$10.00 handling charge will be added to all orders under \$50.00.
International Orders: A \$25.00 processing fee will be added to all orders under \$200.00.

NEW ACCOUNTS

Green Leaf®, Inc. welcomes all new accounts. Green Leaf® will provide a credit application for new customers to sign agreeing to our terms. When opening an account the customer agrees to pay invoices in 30 days, pay up to a 5% service charge monthly on any invoices 31 days or older, and to pay any and all collection agencies, attorney fees and/or court fees necessary to collect on the account.

SHIPPING

Please notify us with your shipping instructions. Freight, air, parcel post or UPS. If no instruction is given, we will send best way. Freight shipments should be specified, via truck or rail, with line preference. A handling/service charge of \$2.00 will be added to all invoices.

SAME DAY SHIPMENTS

Same day shipments will incur a service charge of \$10.00 or 5%, whichever is greater.

WEIGHT VARIANCE

To control the cost of processing your orders, Green Leaf® uses electronic counting scales. It is our policy to have each scale certified for accuracy on a schedule recommended by the scale manufacturer. Electronic scales have an accuracy range that is acceptable by most of our customers. If your policy does not allow for a small overage/underage, please contact our marketing department and advise them that you require 100% accuracy of all quantities. Your account will be marked as hand count only. There is a charge of plus 5% of order value for all orders processed in this manner.

RETURNED GOODS POLICY

Returns must be received within 30 days from shipment and must be approved by Green Leaf®, Inc. A document with our return authorization number (RGA Number) and ship to address will be faxed or mailed to the customer. Any goods returned that do not have this document clearly attached to the outside of the carton will be refused. All returns must be freight prepaid. A 20% minimum restocking fee will be assessed to all returns. Returns will only be accepted if the products are in new and original condition, and contain no markings or labels other than Green Leaf®.

SHORTAGES

Claims must be made within 30 days after receipt of shipment; otherwise order will be considered shipped as ordered.

LOSS OR DAMAGE

In order to expedite your shipment to its destination in good condition, all orders are packed and shipped with care. Green Leaf®, Inc. assumes no responsibility for items lost or damaged in transit. Claims will be made with carriers immediately. The purchaser is responsible for claims on freight collect shipments.

GUARANTEE

Green Leaf®, Inc. warrants all merchandise to be as represented in our catalog. We will replace or make satisfactory adjustment if found otherwise.

USE OF PRODUCTS

Products manufactured by Green Leaf® and illustrated within this catalog are produced using resins that are prime and certifiable in grade. The chemical resistance & physical properties of these resins are available from Green Leaf®'s engineering department. Improper use of these products could result in environmental spills, serious injury or death.

MATERIALS

As stated, Green Leaf, Inc.'s stock fittings are always manufactured using quality prime resins; however, in order to insure that we continue to provide the best value to our customers, we reserve the right to change specific grades and/or manufacturers of resin without notice. Please keep this in mind when specifying our stock fittings for use in your applications. Due to the infinite end use possibilities of our products, the customer is responsible for determining the suitability of our products for their application. Data sheets indicating the manufacturer, grade, and properties of current production materials are available and may be requested at anytime. Should your application require a specific material, please contact our sales department for a custom quotation.



PURCHASE ORDER

PO Box 88
 9490 North Baldwin Street
 Fontanet, IN 47851
 P: 800-654-9808
 F: 812-877-4278

CUSTOMER #: _____

BILLING ADDRESS

SHIPPING ADDRESS

 Name

 Address

 City / State/ Zip

 Telephone

 Name

 Address

 City / State/ Zip

FAX ORDER TO: 1-812-877-4278

| DATE | DELIVERY DATE | SHIP VIA | F.O.B. | TERMS | PURCHASE ORDER | |
|------------------------------|---------------|----------|--------|-------|----------------|-------|
| | | | | | | |
| PART # | DESCRIPTION | | | QTY | UNIT PRICE | TOTAL |
| | | | | | | |
| | | | | | | |
| | | | | | | |
| | | | | | | |
| | | | | | | |
| | | | | | | |
| | | | | | | |
| | | | | | | |
| | | | | | | |
| | | | | | | |
| | | | | | | |
| | | | | | | |
| | | | | | | |
| | | | | | | |
| | | | | | | |
| | | | | | | |
| | | | | | | |
| <i>Special Instructions:</i> | | | | | | |
| | | | | | | |
| | | | | | | |

\$50.00 Minimum Order

Authorized By: _____



THE FLUID FLOW EXPERTS

Address:

9490 N. Baldwin St. • Fontanet, IN 48751

Web: green-leaf.us

Phone: 800.654.9808

Fax: 812.877-4278