



WINTER TOOL CATALOG | 2016/2017

Rugg Manufacturing Corp



MADE IN USA



36PLW-S

- Lite-Wate™ 1.25" OD Aluminum Handle
- Foam Grip on Handle
- 20" Poly Combo Blade
- Embedded Steel Wearstrip
- Large D-Grip



36PBSLW-S

- Original BACK-SAVER® Design
- Lite-Wate™ 1.25" OD Aluminum Handle
- Foam Grip on Handle
- 20" Poly Combo Blade
- Embedded Steel Wearstrip
- Large D-Grip



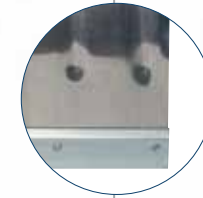
26PL-S / 26PLW-S

- Lite-Wate™ 1.25" OD Aluminum Handle
- Large D-Grip
- Foam Grip on Handle
- 18" Poly Combo Blade
- **26PLW-S** has Riveted Steel Wearstrip



26PBSL-S / 26PBSLW-S

- Original BACK-SAVER® Design
- Lite-Wate™ 1.25" OD Aluminum Handle
- Foam Grip on Handle
- 18" Poly Combo Blade
- **26PBSLW-S** has a Riveted Steel Wearstrip
- Large D-Grip



22L-S

- Lite-Wate™ 1.25" OD Aluminum Handle
- Foam Grip on Handle
- 18" Aluminum Combo Blade
- Riveted Steel Wearstrip
- Full Coverage Back Strap
- Large D-Grip



22BSL-S

- Original BACK-SAVER® Design
- Lite-Wate™ 1.25" OD Aluminum Handle
- Foam Grip on Handle
- 18" Aluminum Combo Blade
- Riveted Steel Wearstrip
- Full Coverage Back Strap
- Large D-Grip



35PL-S / 35PLW-S

- Lite-Wate™ 1.25" OD Aluminum Handle
- Foam Grip on Handle
- Large D-Grip
- 27" Poly Pusher Blade
- **35PLW-S** has a Riveted Steel Wearstrip

Product	CS/PK	UPC	Case UPC	Unit Specs H x W x D WT	Case Specs H X W X D WT	Pallet QTY	TL Qty 53' Truck
36PLW-S	6	0 89217 64361 3	2 0 0 89217 64361 7	51.5 x 19 x 2 3.5 LBS	52 x 20 x 16 21.45 LBS	96 Units 16 CS.	26 Pallets 2,496 Units
36PBSLW-S	6	0 89217 46361 7	2 0 0 89217 46361 1	55.5 x 19 x 2 3.5 LBS	56 x 20 x 16 21.5 LBS		
26PL-S	6	0 89217 64260 9	2 0 0 89217 64260 3	50.5 x 17 x 4 2.9 LBS	51 x 19 x 14 17.95 LBS		
26PLW-S	6	0 89217 64261 6	2 0 0 89217 64261 0	50.5 x 17 x 4 3.4 LBS	51 x 19 x 14 20.4 LBS		
26PBSL-S	6	0 89217 46260 3	2 0 0 89217 46260 7	54 x 17 x 4 3.1 LBS	54 x 19 x 14 18.65 LBS		
26PBSLW-S	6	0 89217 46261 0	2 0 0 89217 46261 4	54 x 17 x 4 3.4 LBS	54 x 19 x 14 20.7 LBS		

Product	CS/PK	UPC	Case UPC	Unit Specs H x W x D WT	Case Specs H X W X D WT	Pallet QTY	TL Qty 53' Truck
22L-S	6	0 89217 47220 6	2 0 0 89217 47220 0	51 x 17 x 2.5 3.5 LBS	51 x 19 x 16 21 LBS	96 Units 16 CS.	26 Pallets 2,496 Units
22BSL-S	6	0 89217 40220 3	2 0 1 89217 40220 4	54.5 x 18 x 4 3.6 LBS	54.5 x 18.5 x 18 21.6 LBS		
35PL-S	5	0 89217 35641 4	2 0 0 89217 35641 8	52.5 x 27 x 2.5 3.22 LBS	52.5 x 27 x 12 16.2 LBS	65 Units 13 CS.	26 Pallets 1,690 Units
35PLW-S	5	0 89217 35648 3	2 0 0 89217 35648 7	52.5 x 27 x 2.5 3.72 LBS	52.5 x 27 x 12 18.7 LBS		



36PW-S

- Straight 1.25" OD Steel Handle
- Foam Grip on Handle
- 20" Poly Combo Blade
- Embedded Steel Wearstrip
- Large D-Grip



36PBSW-S

- Original BACK-SAVER® Design
- Steel 1.25" OD Ergonomic Handle
- Foam Grip on Handle
- 20" Poly Combo Blade
- Embedded Steel Wearstrip
- Large D-Grip



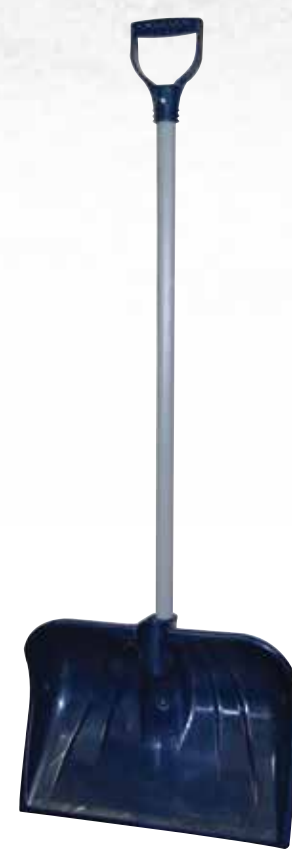
26PW-S

- Straight 1.25" OD Steel Handle
- Foam Grip on Handle
- 18" Poly Combo Blade
- Riveted Steel Wearstrip
- Large D-Grip



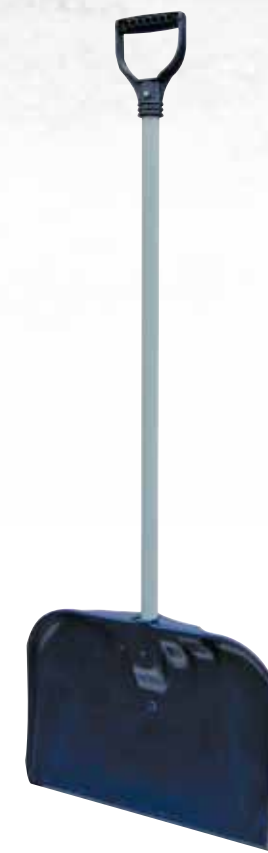
26PBSW-S

- Original BACK-SAVER® Design
- Steel 1.25" OD Ergonomic Handle
- Foam Grip on Handle
- 18" Poly Combo Blade
- Riveted Steel Wearstrip
- Large D-Grip



26PDX-S / 26PDXW-S

- Straight Vinyl Covered Steel Handle
- Molded D-Grip
- 18" Poly Combo Blade
- Non Abrasive, Safe for All Surfaces
- 26PDXW-S has Riveted Steel Wearstrip



30P-S

- Straight Vinyl Covered Steel Handle
- 18" Poly Standard Blade
- Molded D-Grip
- Non Abrasive, Safe for All Surfaces



27PBG-S

- Straight Vinyl Covered Steel Handle
- 18" Poly Standard Blade
- Molded D-Grip
- Non Abrasive, Safe for All Surfaces



28PDX-S

- Straight Vinyl Covered Steel Handle
- 14" Poly Scoop Blade
- Molded D-Grip
- Non Abrasive, Safe for All Surfaces
- Great Year-Round Shovel

Product	CS/PK	UPC	Case UPC	Unit Specs H x W x D WT	Case Specs H X W X D WT	Pallet QTY	TL Qty 53' Truck
36PW-S	6	0 89217 60361 7	2 0 0 89217 64361 7	51.5 x 19 x 2 4.3 LBS	52 x 20 x 16 25.8 LBS	96 Units 16 CS.	26 Pallets 2,496 Units
36PBSW-S	6	0 89217 61361 6	2 0 0 89217 61361 0	55.5 x 19 x 2 4.65 LBS	56 x 20 x 16 27.9 LBS		
26PW-S	6	0 89217 60261 0	2 0 0 89217 60261 4	50.5 x 17 x 4 3.85 LBS	52 x 18 x 14 23.1 LBS		
26PBSW-S	6	0 89217 61261 9	2 0 0 89217 61261 3	54 x 17 x 4 4.6 LBS	54 x 19 x 14 28 LBS		

Product	CS/PK	UPC	Case UPC	Unit Specs H x W x D WT	Case Specs H X W X D WT	Pallet QTY	TL Qty 53' Truck
26PDX-S	6	0 89217 80260 7	2 0 0 89217 80260 1	49.5 x 17 x 5 2.8 LBS	49.5 x 19 x 14 17.15 LBS	96 Units 16 CS.	26 Pallets 2,496 Units
26PDXW-S	6	0 89217 80261 4	2 0 0 89217 80261 8	49.5 x 17 x 5 3.2 LBS	49.5 x 19 x 14 19.6 LBS		
30P-S	6	0 89217 60300 6	2 0 0 89217 60300 0	51 x 18 x 3 2.3 LBS	51 x 18 x 11 14.35 LBS	144 Units 24 CS.	26 Pallets 3,744 Units
27PBG-S	6	0 89217 27613 2	2 0 0 89217 27613 6	49 x 18 x 3 2.3 LBS	49 x 18 x 11 14.3 LBS		
28PDX-S	6	0 89217 82830 0	2 0 0 89217 82830 4	52 x 14 x 3.5 3 LBS	52 x 15 x 15 18.05 LBS	96 Units 16 CS.	26 Pallets 2,496 Units



34P-S

- 48" Hardwood Handle
- 20" Poly Pusher Blade
- Non Abrasive, Safe for All Surfaces



34PD-S

- Straight Vinyl Covered Steel Handle
- 20" Poly Pusher Blade
- Molded D-Grip
- Non Abrasive, Safe for All Surfaces



227P-S

- Looks Like Mom & Dad's
- 32" In Overall Length
- Straight Vinyl Covered Steel Handle
- 12" Poly Blade
- Molded D-Grip
- Non Abrasive, Safe for All Surfaces
- Strong Enough to be a Trunk Shovel



78

- Pathmaster Ultra Utility Shovel
- Stamped Steel Scoop Blade – 11" Wide
- 48" Hardwood Handle



91

- Pathmaster Ultra Steel Pusher
- Stamped Steel Pusher Blade – 24" Wide
- 48" Hardwood Handle



95

- Full Hard Steel Blade
- 48" Hardwood Handle



99P

- 17' Total Length
- Lite-Wate™ Aluminum Handle
- 25" Poly Blade

Product	CS/PK	UPC	Case UPC	Unit Specs H x W x D WT	Case Specs H X W X D WT	Pallet QTY	TL Qty 53' Truck
34P-S	6	0 89217 60340 2	2 0 0 89217 60340 6	58 x 19 x 2 2.6 LBS	57.5 x 20 x 15 15.6 LBS	96 Units 16 CS.	26 Pallets 2,496 Units
34PD-S	6	0 89217 63340 9	2 0 0 89217 63340 3	49.5 x 19 x 2 2.5 LBS	50 x 20 x 15 15.4 LBS		
227P-S	6	0 89217 62270 0	2 0 0 89217 62270 4	32 x 12 x 3 1 LBS	32 x 12 x 9 6.55 LBS	270 Units 45 CS.	26 Pallets 7,020 Units

Product	CS/PK	UPC	Case UPC	Unit Specs H x W x D WT	Case Specs H X W X D WT	Pallet QTY	TL Qty 53' Truck
78	6	0 89217 00780 4	2 0 0 89217 00780 8	61.5 x 11 x 4 4.5 LBS	61.5 x 11 x 11 27.2 LBS	120 Units 20 CS.	26 Pallets 3,120 Units
91	3	0 89217 00910 5	2 0 0 89217 00910 9	59 x 24 x 5 7.7 LBS	59 x 24 x 9 46.6 LBS	57 Units 19 CS.	26 Pallets 1,482 Units
95	6	0 89217 00950 1	2 0 0 89217 00950 1	53.5 x 7 x 1.5 2.2 LBS	54 x 9 x 4.5 13.2 LBS	180 Units 30 CS.	26 Pallets 7,800 Units
99P	4	0 89217 00996 9	2 0 0 89217 00996 3	57 x 8.5 x 3.5 6.75 LBS	58 x 9.5 x 15 27 LBS	48 Units 12 CS.	26 Pallets 2,808 Units



THE NEW RUGG MANUFACTURING

Rugg began manufacturing wooden hay rakes in Montague, Massachusetts in 1842. Since that time, a full complement of domestically manufactured Snow Tools and Lawn & Garden tools have been added.

New ownership has been in place since October of 2013 and investments have been made in infrastructure to assure continued growth. The Company will continue to focus on innovative and functional products for the home, yard and garden. Quality craftsmanship and dedication, put into Rugg products since 1842, are the foundation of a long and successful history.

Our product lines now exceed 100 Snow and Lawn & Garden Tools, which are distributed internationally. These include Rugg's popular BACK-SAVER® bent handle snow shovels and lawn rakes, conceived by William Rugg to "put the bend in the handle and not in your back."

With a product base ranging from the original wood hay rake through state-of-the-art ergonomically designed BACK-SAVER® tools, Rugg will continue to provide an expanding consumer base with new and more useful tools.

The Company intends to capitalize on these as it expands current product lines, opens new markets and explores new opportunities.



MADE IN USA

Rugg Manufacturing Corp. | Leominster, MA
800-633-8772 | Fax: 978-401-2188
www.rugg.com

\$5.00

