



STANDARDS

BELL® UPC Vendor Number 050169.

Where applicable, BELL® products are engineered in accordance with the standards established by Underwriters Laboratories and the Canadian Standards Association. Dimensional data listed in this catalog is intended for general reference with broad tolerance limits.

2014 NEC®

When specifying BELL® Weatherproof boxes and covers, consult the requirements of the National Electrical Code®, Article 314.16 (B) and 406.9 (B). Article 314.16 (B) details the NEC® requirements for the maximum number of conductors allowed for a BELL® Weatherproof installation. Article 406.9 (B) provides details on the NEC® requirements for receptacles being used in wet locations.

For your convenience, we have reprinted the pertinent NEC® articles. In all cases, consult your local electrical code and inspector interpretation.

Wiring Capacity: BELL® Weatherproof Boxes and Extensions**Maximum Number of Conductors or Minimum Size Box (Article 314.16 (B))**

The purpose of Section 314.16 (B) is to determine the maximum conductor count or the minimum box size required for the job. It also can be used to figure how many other conductors may be added without exceeding the Code-prescribed limit. Most applications have determined the number of conductors. The rules of Section 314.16 (B) are used to determine the Code recognized limit, or smallest box that may be installed.

Selection of any HUBBELL® TAYMAC® Weatherproof box or extension for use in any electrical circuit work must take into consideration the maximum number of wires permitted in the box. Safe electrical practice demands that wires not be jammed into boxes because of the possibility of nicks, abrasions, or other damage to the insulating material, creating the potential for ground faults or short circuits.

314.16 Number of Conductors in Outlet, Device, and Junction Boxes, and Conduit Bodies. Boxes and conduit bodies shall be of an approved size to provide free space for all enclosed conductors. In no case shall the volume of the box, as calculated in 314.16(A), be less than the fill calculation as calculated in 314.16(B). The minimum volume for conduit bodies shall be as calculated in 314.16(C).

The provisions of this section shall not apply to terminal housings supplied with motors or generators.

Boxes and conduit bodies enclosing conductors 4

AWG or larger shall also comply with the provisions of 314.28.

(A) Box Volume Calculations. The volume of a wiring enclosure (box) shall be the total volume of the assembled sections and, where used, the space provided by plaster rings, domed covers, extension rings, and so forth, that are marked with their volume or are made from boxes the dimensions of which are listed in Table 314.16(A). (1) Standard Boxes. The volumes of standard boxes that are not marked with their volume shall be as given in Table 314.16(A).

(2) Other Boxes. Boxes 1650 cm³ (100 in.³) or less, other than those described in Table 314.16(A), and nonmetallic boxes shall be durably and legibly marked by the manufacturer with their volume. Boxes described in Table 314.16(A) that have a volume larger than is designated in the table shall be permitted to have their volume marked as required by this section.

(B) Box Fill Calculations. The volumes in paragraphs 314.16(B)(1) through (B)(5), as applicable, shall be added together. No allowance shall be required for small fittings such as locknuts and bushings.

(1) Conductor Fill. Each conductor that originates outside the box and terminates or is spliced within the box shall be counted once, and each conductor that passes through the box without splice or termination shall be counted once. Each loop or coil of unbroken conductor not less than twice the minimum length required for free conductors in 300.14 shall be counted twice. The conductor fill shall be calculated using Table 314.16(B). A conductor, no part of which leaves the box, shall not be counted.

Exception: An equipment grounding conductor or conductors or not over four fixture wires smaller than 14 AWG, or both, shall be permitted to be omitted from the calculations where they enter a box from a domed luminaire or similar canopy and terminate within that box.

(2) Clamp Fill. Where one or more internal cable clamps, whether factory or field supplied, are present in the box, a single volume allowance in accordance with Table 314.16(B) shall be made based on the largest conductor present in the box. No allowance shall be required for a cable connector with its clamping mechanism outside the box.

(3) Support Fittings Fill. Where one or more luminaire studs or hickey are present in the box, a single volume allowance in accordance with Table 314.16(B) shall be made for each type of fitting based on the largest conductor present in the box.

(4) Device or Equipment Fill. For each yoke or strap

containing one or more devices or equipment, a double volume allowance in accordance with Table 314.16(B) shall be made for each yoke or strap based on the largest conductor connected to a device(s) or equipment supported by that yoke or strap. A device or utilization equipment wider than a single 50 mm (2 in.) device box as described in Table 314.16(A) shall have double volume allowances provided for each gang required for mounting.

(5) Equipment Grounding Conductor Fill. Where one or more equipment grounding conductors or equipment bonding jumpers enter a box, a single volume allowance in accordance with Table 314.16(B) shall be made based on the largest equipment grounding conductor or equipment bonding jumper present in the box. Where an additional set of equipment grounding conductors, as permitted by 250.146(D), is present in the box, an additional volume allowance shall be made based on the largest equipment grounding conductor in the additional set.

(C) Conduit Bodies.

(1) General. Conduit bodies enclosing 6 AWG conductors or smaller, other than short-radius conduit bodies as described in 314.16(C)(3), shall have a cross-sectional area not less than twice the cross-sectional area of the largest conduit or tubing to which they can be attached. The maximum number of conductors permitted shall be the maximum number permitted by Table 1 of Chapter 9 for the conduit or tubing to which it is attached.

(2) With Splices, Taps, or Devices. Only those conduit bodies that are durably and legibly marked by the manufacturer with their volume shall be permitted to contain splices, taps, or devices. The maximum number of conductors shall be calculated in accordance with 314.16(B). Conduit bodies shall be supported in a rigid and secure manner.

(3) Short Radius Conduit Bodies. Conduit bodies such as capped elbows and service-entrance elbows that enclose conductors 6 AWG or smaller, and are only intended to enable the installation of the raceway and the contained conductors, shall not contain splices, taps, or devices and shall be of an approved size to provide free space for all conductors enclosed in the conduit body.

406.9 Receptacles in Damp or Wet Locations.

(A) Damp Locations. A receptacle installed outdoors in a location protected from the weather or in other damp locations shall have an enclosure for the receptacle that is weatherproof when the receptacle is covered (attachment plug cap not inserted and receptacle covers closed).

An installation suitable for wet locations shall also

be considered suitable for damp locations.

A receptacle shall be considered to be in a location protected from the weather where located under roofed open porches, canopies, marquees, and the like, and will not be subjected to a beating rain or water runoff. All 15- and 20-ampere, 125- and 250-volt nonlocking receptacles shall be a listed weather-resistant type.

Informational Note: The types of receptacles covered by this requirement are identified as 5-15, 5-20, 6-15, and 6-20 in ANSI/NEMA WD 6-2002, National Electrical Manufacturers Association Standard for Dimensions of Attachment Plugs and Receptacles.

(B) Wet Locations.

(1) Receptacles of 15 and 20 Amperes in a Wet Location. 15- and 20-ampere, 125- and 250-volt receptacles installed in a wet location shall have an enclosure that is weatherproof whether or not the attachment plug cap is inserted. An outlet box hood installed for this purpose shall be listed and shall be identified as "extra-duty." All 15- and 20-ampere, 125- and 250-volt nonlocking-type receptacles shall be listed weather-resistant type.

Informational Note No. 1: Requirements for extra-duty outlet box hoods are found in ANSI/UL 514D-2000, Cover Plates for Flush-Mounted Wiring Devices.

Informational Note No. 2: The types of receptacles covered by this requirement are identified as 5-15, 5-20, 6-15, and 6-20 in ANSI/NEMA WD 6-2002, National Electrical Manufacturers Association Standard for Dimensions of Attachment Plugs and Receptacles.

Exception: 15- and 20-ampere, 125- through 250-volt receptacles installed in a wet location and subject to routine high-pressure spray washing shall be permitted to have an enclosure that is weatherproof when the attachment plug is removed.

(2) Other Receptacles. All other receptacles installed in a wet location shall comply with (B)(2)(a) or (B)(2)(b).

(a) A receptacle installed in a wet location, where the product intended to be plugged into it is not attended while in use, shall have an enclosure that is weatherproof with the attachment plug cap inserted or removed.

(b) A receptacle installed in a wet location where the product intended to be plugged into it will be attended while in use (e.g., portable tools) shall have an enclosure that is weatherproof when the attachment plug is removed.

(C) Bathtub and Shower Space. Receptacles shall not be installed within or directly over a bathtub or shower stall.

(D) Protection for Floor Receptacles. Standpipes of floor receptacles shall allow floor-cleaning equipment to be operated without damage to receptacles.

(E) Flush Mounting with Faceplate. The enclosure for a receptacle installed in an outlet box flush-mounted in a finished surface shall be made weatherproof by means of a weatherproof faceplate assembly that provides a watertight connection between the plate and the finished surface.

GENERAL FEATURES AND BENEFITS

BELL® Weatherproof products all offer these features and benefits:

- Rugged seamless die cast construction that will not allow entry of moisture
- Reinforced connector outlets to provide a secure mechanical installation
- State-of-the-art powder coat paint for maximum weatherability and scratch resistance
- Bilingual instructions provided with every product
- Installation hardware and ground screws included where applicable
- Shrink-wrap packaging that keeps all components together
- UPC-A barcoding to help lower transaction costs

Refer to the pages that follow for more specific information about BELL® products.

National Electric Code® and NEC® is a registered Trademark of the National Fire Protection Association.

Calculate The Minimum Size Box

Section 314-16(B) describes in detail the method of counting wires, as well as clamps, fittings, or devices (i.e., switches, receptacles, combination devices) — by establishing an equivalent conductor-value for each. These values are added together to get a total number of conductors. The minimum size box is the smallest one in cubic inch size that can accommodate that number of conductors.

Points to Remember:

1. No matter how many ground wires come into a box, they only count as one conductor within the box.
2. Any wire running unbroken through the box counts as one wire.
3. Each wire coming into a splice device (crimp or twist-on type) is counted as one wire.
4. Each wire coming into the box and connecting to a device counts as one wire of that size.
5. Where devices are mounted in the box, the total conductor count must be increased by two for each mounting strap.

Table 314.16(B)
Volume Allowance Required per Conductor

Size of Conductor	Free Space Within Box for Each Conductor	
(AWG)	cm ³	in. ³
18	24.6	1.50
16	28.7	1.75
14	32.8	2.00
12	36.9	2.25
10	41.0	2.50
8	49.2	3.00
6	81.9	5.00

Example – BELL® Weatherproof

Supply power to a single switch with #14 conductors. Metal conduit will be used as the wire way. You must provide space for four conductors and one switch, totally a conductor count of 6. Read across the line in Table 314.16(B) for a #14 conductor. Multiply 6 times the free space within a box. For each conductor for a #14 conductor 2.00. This example requires a minimum box of 12.0 cubic inches.

DIE CAST ALUMINUM SINGLE-GANG BOXES


APPLICATIONS

- For use in branch circuit wiring in wet, damp or dry locations.
- May be used as a weatherproof junction box, or as a housing for receptacles, switches and GFCI's.

PRODUCT FEATURES

- Reinforced connector outlets
- State-of-the-art powder coat finish
- Eight box mounting options with detachable lugs provided
- Two closure plugs included
- Ground screw installed
- Multi-lingual instructions in each package
- Internal threads on hubs comply with NEMA requirements. Hubs accept all threaded fittings and threaded conduit.

COMPLIANCES

-  – File 195978
-  – C22.2 No. 18
- NEMA 3R Rated



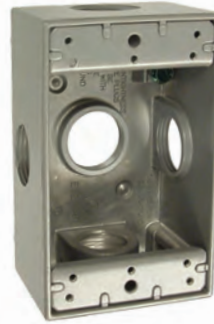
5320-0 TO 5320-9
5324-0 TO 5324-5



5321-0 TO
5321-6, 5330-0



5322-0, 5331-0



5323-0, 5332-0



5385-0 TO 5387-0

CATALOG #	CUBIC IN. (CM ³)	DESCRIPTION COLOR	OUTLETS	PKG. TYPE	STD. PKG.	BARCODE
2" Deep, with Lugs – Three Threaded Outlets – 4-1/2" X 2-3/4"						
5320-0	18.3 (299.9)	Gray	(3) 1/2"	Shrink	20	
5320-1	18.3 (299.9)	White	(3) 1/2"	Shrink	20	
5320-2	18.3 (299.9)	Bronze	(3) 1/2"	Shrink	20	
5320-5	18.3 (299.9)	Gray	(3) 1/2"	Carded	6	
5320-6	18.3 (299.9)	White	(3) 1/2"	Carded	6	
5320-7	18.3 (299.9)	Bronze	(3) 1/2"	Carded	6	
5320-9	18.3 (299.9)	Gray	(3) 1/2"	Bulk	50	—
5324-0	18.3 (299.9)	Gray	(3) 3/4"	Shrink	20	
5324-1	18.3 (299.9)	White	(3) 3/4"	Shrink	20	
5324-5	18.3 (299.9)	Gray	(3) 3/4"	Carded	6	
2" Deep, with Lugs – Four Threaded Outlets – 4-1/2" X 2-3/4"						
5321-0	18.3 (299.9)	Gray	(4) 1/2"	Shrink	20	
5321-1	18.3 (299.9)	White	(4) 1/2"	Shrink	20	
5321-2	18.3 (299.9)	Bronze	(4) 1/2"	Shrink	20	
5321-5	18.3 (299.9)	Gray	(4) 1/2"	Carded	6	
5321-6	18.3 (299.9)	White	(4) 1/2"	Carded	6	
5330-0	18.3 (299.9)	Gray	(4) 3/4"	Shrink	20	
2" Deep, with Lugs – Five Threaded Outlets – 4-1/2" X 2-3/4"						
5322-0	18.3 (299.9)	Gray	(5) 1/2"	Shrink	20	
5331-0	18.3 (299.9)	Gray	(5) 3/4"	Shrink	20	
5323-0	18.3 (299.9)	Gray	(5) 1/2"	Shrink	20	
5332-0	18.3 (299.9)	Gray	(5) 3/4"	Shrink	20	
2-5/8" Deep, with Lugs – Three Threaded Outlets – 4-1/2" X 2-3/4"						
5385-0	22.5 (368.7)	Gray	(3) 1/2"	Shrink	15	
5386-0	22.5 (368.7)	Gray	(3) 3/4"	Shrink	15	
5387-0	22.5 (368.7)	Gray	(3) 1"	Shrink	15	

PROOF

DIE CAST ALUMINUM SINGLE-GANG EXTENSIONS AND ADAPTERS



5406-0

(No ground screw provided)



5399-0, 5403-0

(Includes one closure plug)



**5400-0 to 5400-5
5405-0**

(Includes three closure plugs)

CATALOG #	CUBIC IN. (CM ³)	DESCRIPTION COLOR	OUTLETS	PKG. TYPE	STD. PKG.	BARCODE
Single-Gang Extension – 4-1/2" X 2-3/4" X 1" Deep						
5406-0	9.5 (155.7)	Gray	—	Shrink	25	
Single-Gang – Extension Adapters – 5-1/4" X 3-1/2" X 1-1/2" Deep – Two threaded outlets						
5399-0	9.5 (155.7)	Gray	(2) 1/2"	Shrink	20	
5403-0	11.0 (180.3)	Gray	(2) 3/4"	Shrink	20	
Single-Gang – Extension Adapters – 5-1/4" X 3-1/2" X 1-1/2" Deep – Six Threaded outlets						
5400-0	9.5 (155.7)	Gray	(6) 1/2"	Shrink	20	
5400-5	9.5 (155.7)	Gray	(6) 1/2"	Carded	6	
5405-0	11.0 (180.3)	Gray	(6) 3/4"	Shrink	20	

APPLICATIONS

- Used to provide additional capacity needed for NEC box fill requirements.
- Adapters allow installer to add "take-offs" to new boxes/devices.

PRODUCT FEATURES

- Installation hardware, gasket, and ground screw provided
- Closure plugs provided for two and six outlet styles
- Internal threads and hubs comply with NEMA requirements. Hubs accept all threaded fittings and threaded conduit.

COMPLIANCES

- – File E195978
- – C22.2 No. 18
- NEMA 3R Rated



5412-0, 5413-0

(Includes one closure plug)



5414-0, 5415-0

(Includes three closure plugs)

CATALOG #	CUBIC IN. (CM ³)	DESCRIPTION COLOR	OUTLETS	PKG. TYPE	STD. PKG.	BARCODE
Swing-Arm – Extension Adapters – 5-1/4" X 3-1/2" X 1-1/2" Deep – Two Threaded Outlets						
5412-0	13.8 (226.1)	Gray	(2) 1/2"	Shrink	10	
5413-0	13.8 (226.1)	Gray	(2) 3/4"	Shrink	10	
Swing-Arm – Extension Adapters – 5-1/4" X 3-1/2" X 1-1/2" Deep – Six Threaded Outlets						
5414-0	12.8 (209.8)	Gray	(6) 1/2"	Shrink	10	
5415-0	12.8 (209.8)	Gray	(6) 3/4"	Shrink	10	

APPLICATIONS

- Used to provide additional capacity needed for NEC box fill requirements.
- Allows installer to add "take-offs" to new boxes/devices.

PRODUCT FEATURES

- Unique swing-arm design speeds installation by allowing the installer better visibility when lining up and threading fasteners.
- Rugged die cast construction
- Reinforced connector outlets
- State-of-the-art powder coat finish
- Installation hardware, ground screw and gasket provided
- Multi-lingual instructions in each package
- Internal threads and hubs comply with NEMA requirements. Hubs accept all threaded fittings and threaded conduit.

COMPLIANCES

- – File E195978
- – C22.2 No. 18
- NEMA 3R Rated

SEE END OF SECTION (PG D34) FOR DETAILED DRAWINGS >>

www.Hubbell-RTB.com



DIE CAST ALUMINUM TWO-GANG BOXES

APPLICATIONS

- For use in branch circuit wiring in wet, damp, or dry locations.
- May be used as a weatherproof junction box, or as a housing for receptacles, switches and GFCI's.

PRODUCT FEATURES

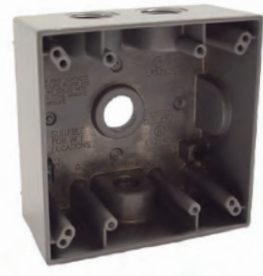
- Reinforced connector outlets
- State-of-the-art powder coat finish
- Eight box mounting options with detachable lugs provided
- Two closure plugs included
- Ground screw installed
- Multi-lingual instructions in each package
- Internal threads on hubs comply with NEMA requirements. Hubs accept all threaded fittings and threaded conduit.

COMPLIANCES

-  – File E195978
-  – C22.2 No. 18
- NEMA 3R Rated



5333-0, 5341-0



5335-0, 5343-0



5337-0 to 5337-5,
5345-0



5334-0, 5342-0



5340-0, 5348-0



5338-0, 5346-0



5388-0, 5389-0

CATALOG #	CUBIC IN. (CM ³)	DESCRIPTION COLOR OUTLETS		PKG. TYPE	STD. PKG.	BARCODE
2" Deep, with Lugs – Three Threaded Outlets – 4-1/2" X 4-1/2"						
5333-0	32.0 (524.4)	Gray	(3) 1/2"	Shrink	12	
5341-0	32.0 (524.4)	Gray	(3) 3/4"	Shrink	12	
2" Deep, with Lugs – Four Threaded Outlets – 4-1/2" X 4-1/2"						
5335-0	31.0 (508.0)	Gray	(4) 1/2"	Shrink	12	
5343-0	31.0 (508.0)	Gray	(4) 3/4"	Shrink	12	
2" Deep, with Lugs – Five Threaded Outlets – 4-1/2" X 2-3/4"						
5337-0	31.0 (508.0)	Gray	(5) 1/2"	Shrink	12	
5337-1	31.0 (508.0)	White	(5) 1/2"	Shrink	12	
5337-5	31.0 (508.0)	Gray	(5) 1/2"	Carded	4	
5345-0	31.0 (508.0)	Gray	(5) 3/4"	Shrink	12	
5334-0	32.0 (524.4)	Gray	(5) 1/2"	Shrink	12	
5342-0	32.0 (524.4)	Gray	(5) 3/4"	Shrink	12	
2" Deep, with Lugs – Seven Threaded Outlets – 4-1/2" X 4-1/2"						
5340-0	30.2 (494.9)	Gray	(7) 1/2"	Shrink	12	
5348-0	30.2 (494.9)	Gray	(7) 3/4"	Shrink	12	
5338-0	31.0 (508.0)	Gray	(7) 1/2"	Shrink	12	
5346-0	31.0 (508.0)	Gray	(7) 3/4"	Shrink	12	
2-5/8" Deep, with Lugs – Five Threaded Outlets – 4-1/2" X 4-1/2"						
5388-0	36.0 (589.9)	Gray	(5) 3/4"	Shrink	9	
5389-0	36.0 (589.9)	Gray	(5) 1"	Shrink	9	

DIE CAST MULTI-GANG BOXES AND EXTENSIONS

TWO-GANG EXTENSION



APPLICATION

- Used to provide additional capacity needed for NEC box fill requirements.

PRODUCT FEATURES

- Rugged seamless construction
- State-of-the-art powder coat finish
- Installation hardware and gasket provided
- Multi-lingual instructions in each package

COMPLIANCES

- – File E195978
- – C22.2 No. 18
- NEMA 3R Rated

CATALOG #	CUBIC IN. (CM ³)	DESCRIPTION COLOR	OUTLETS	PKG. TYPE	STD. PKG.	BARCODE
5407-0	16.0 (262.2)	Gray	—	Shrink	10	

THREE-GANG BOX



APPLICATIONS

- For use in branch circuit wiring in wet, damp or dry locations.
- Can be used as a weatherproof junction box, or as a housing for receptacles, switches and GFCI's.

PRODUCT FEATURES

- Seamless die cast aluminum construction
- Reinforced connector outlets
- State-of-the-art powder coat finish
- Eight box mounting options with de-tachable lugs provided
- Four closure plugs included
- Ground screws installed
- Multi-lingual instructions in each package
- Internal threads and hubs comply with NEMA requirements. Hubs accept all threaded fittings and threaded conduit.

COMPLIANCES

- – File E195978
- – C22.2 No. 18
- NEMA 3R Rated

CATALOG #	CUBIC IN. (CM ³)	DESCRIPTION COLOR	OUTLETS	PKG. TYPE	STD. PKG.	BARCODE
5390-0	55.0 (901.3)	Gray	(7) 3/4"	Boxed	1	

SEE END OF SECTION (PG D35) FOR DETAILED DRAWINGS >>

www.Hubbell-RTB.com



DIE CAST ALUMINUM ROUND SPLICE BOXES AND EXTENSION ADAPTERS

4" ROUND BOX



APPLICATIONS

- For use in branch circuit wiring in wet, damp or dry locations.
- Designed for use as a weatherproof junction box, and may be used with BELL® round cluster covers and round lampholder combinations.

PRODUCT FEATURES

- Rugged die cast construction
- Reinforced connector outlets
- State-of-the-art powder coat finish
- Cast-in mounting lugs provide fast, secure installation
- Includes four closure plugs, installed ground screw and multi-lingual instructions.

COMPLIANCES

-  – File E195978
-  – C22.2 No. 18
- NEMA 3R Rated



5361-0 to 5361-7, 5372-0

CATALOG #	CUBIC IN. (CM ³)	DESCRIPTION COLOR	OUTLETS	PKG. TYPE	STD. PKG.	BARCODE
4" Round Splice Box – Five Threaded Outlets – 1-1/2" Deep						
5361-0	16.0 (262.2)	Gray	(5) 1/2"	Shrink	16	
5361-1	16.0 (262.2)	White	(5) 1/2"	Shrink	16	
5361-2	16.0 (262.2)	Bronze	(5) 1/2"	Shrink	16	
5361-5	16.0 (262.2)	Gray	(5) 1/2"	Carded	6	
5361-6	16.0 (262.2)	White	(5) 1/2"	Carded	6	
5361-7	16.0 (262.2)	Bronze	(5) 1/2"	Carded	6	
5372-0	16.0 (262.2)	Gray	(5) 3/4"	Shrink	16	

ROUND EXTENSION ADAPTERS



APPLICATIONS

- For use with 4" round splice boxes
- Extension adapters are used to in-crease box capacity and allow the installer to add "take-offs" to new boxes/devices.

PRODUCT FEATURES

- Rugged die cast construction
- Reinforced connector outlets
- State-of-the-art powder coat finish
- Includes installation hardware, closure plugs, gasket and multi-lingual instructions.

COMPLIANCES

-  – File E195978
-  – C22.2 No. 18
- NEMA 3R Rated



5363-0

CATALOG #	CUBIC IN. (CM ³)	DESCRIPTION COLOR	OUTLETS	PKG. TYPE	STD. PKG.	BARCODE
4" Round Extension Adapter – Four Threaded Outlets – 1-1/2" Deep						
5363-0	16.3 (267.1)	Gray	(4) 1/2"	Shrink	16	



ROUND BLANK COVERS

ROUND BOX COVERS



5374-0

CATALOG #	DESCRIPTION		PKG. TYPE	STD. PKG.	BARCODE
	COLOR	OUTLETS			
4" Round Cover					
5374-0	Gray	—	Shrink	30	


APPLICATION

- For use with 4" round splice boxes

PRODUCT FEATURES

- Rugged metallic construction
- State-of-the-art powder coat finish
- Includes installation hardware, gasket and multi-lingual instructions.

COMPLIANCES

-  – File E195978
-  – C22.2 No. 18
- NEMA 3R Rated

SEE END OF SECTION (PG D36) FOR DETAILED DRAWINGS >>

www.Hubbell-RTB.com



RAYNGUARD EXTRA DUTY® WHILE-IN-USE METALLIC COVERS



APPLICATION

- The RaynGuard™ Extra Duty® Metallic While-In-Use covers are designed for use whenever protection is required while an outlet is in use.

PRODUCT FEATURES

- Superior commercial quality die-cast aluminum
- Meets or exceeds Extra Duty® rating in UL 514D
- Contractor surveyed and preferred for exact application - no plates to assemble
- NEMA 3R rated / Patent Pending
- Added rain chamber for extra protection from splashing
- Provision on each side for holding cords - No pull-outs
- Padlockable - Accepts standard size padlocks
- Includes gasket and hardware
- Powder coated for corrosion protection
- Unique lid design allows larger plugs and provides more room for bend radius of electrical cords
- Device or box mounting

COMPLIANCES

- – File E195978
- NEMA 3R Rated
- Meets NEC 406.9 (B) Requirements

U.S. Patent 8,013,245



5881-0



5802-0



5852-0



5861-0



5830-0



5885-0



5880-0



5876-0

CATALOG #	DESCRIPTION	DEPTH	COLOR	PKG. TYPE	STD. PKG.	BARCODE
1-Gang Extra Duty While-In-Use Covers						
5881-0	Vertical GFCI	3"	Gray	Shrink	4	
5802-0	Horizontal GFCI	3"	Gray	Shrink	3	
5852-0	Vertical Duplex	3"	Gray	Shrink	4	
5861-0	Horizontal Duplex	3"	Gray	Shrink	3	
1-Gang Extra Duty Deep While-In-Use Covers						
5830-0	Vertical 1.55" or 2.10" Single Round	4.5"	Gray	Shrink	3	
2-Gang Extra Duty While-In-Use Covers						
5885-0	(2) GFCI	3"	Gray	Shrink	3	
5880-0	(2) Duplex	3"	Gray	Shrink	3	
5876-0	GFCI/Duplex	3"	Gray	Shrink	3	



METAL SINGLE-GANG DEVICE COVERS

MULTI-CONFIGURATION

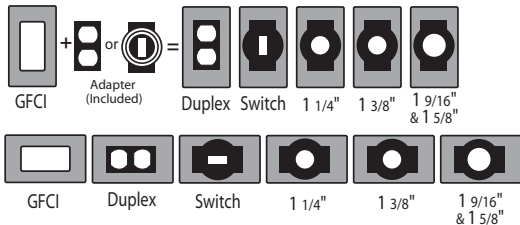


MX1050S, Z, W



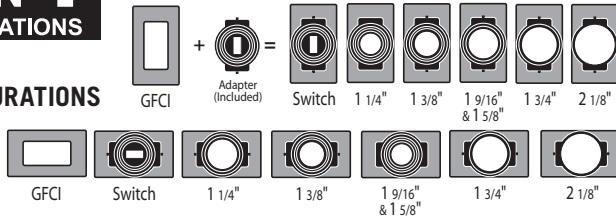
MX1250S, Z, W

12 IN 1
CONFIGURATIONS



14 IN 1
CONFIGURATIONS

CONFIGURATIONS



MX1550S

APPLICATIONS

- For use whenever weatherproof protection is required for an outdoor receptacle or switch

PRODUCT FEATURES

- Heavy duty die-cast metal construction
- Patented Quick-Fit™ keyhole mounting allows cover installation in under a minute
- Includes gasket and mounting hardware
- Base configuration with patented Knockout technology for custom fitting
- Premium powdercoat finish
- Horizontal or vertical mount
- Lockable tab

COMPLIANCES

- – File E212332
 - NEMA 3R Rated
 - Meets NEC 406.9 (B) Requirements
- U.S. Patent 8,013,245

CATALOG #	DESCRIPTION	COLOR	PKG. TYPE	STD. PKG.	BARCODE
1-Gang Flip Covers					
MX1050S	Vertical/Horizontal	Gray	Shrink	20	
MX1050Z	Vertical/Horizontal	Bronze	Shrink	20	
MX1050W	Vertical/Horizontal	White	Shrink	20	
MX1250S	Horizontal/Vertical	Gray	Shrink	20	
MX1250Z	Horizontal/Vertical	Bronze	Shrink	20	
MX1250W	Horizontal/Vertical	White	Shrink	20	
MX1550S	Vertical/Horizontal Twist Lock Cover	Gray	Shrink	10	

SEE END OF SECTION (PG D38) FOR DETAILED DRAWINGS >>

www.Hubbell-RTB.com



METAL SINGLE-GANG DEVICE COVERS

DIE CAST ALUMINUM RAYNTITE®



APPLICATION

- For use whenever weatherproof protection is required for an outdoor receptacle.

PRODUCT FEATURES

- Rugged die cast construction
- State-of-the-art powder coat finish provides maximum weatherability and scratch resistance.
- Self-closing lids assure weatherproof protection when the receptacle is not in use
- Vertical mount covers are padlockable
- May be mounted to box or device
- Includes installation hardware, gasket, and multi-lingual instruction

COMPLIANCES

-  – File E195978
-  – C22.2 No. 18
- NEMA 3R Rated



5027-0



5028-0 to 5028-6



5029-0, 5030-0



5031-0



5026-0



5001-0



5002-0

CATALOG #	DESCRIPTION	COLOR	PKG. TYPE	STD. PKG.	BARCODE
Vertical Mount – Padlockable					
5026-0	Single, 1.593" diameter	Gray	Shrink	24	
5027-0	Duplex	Gray	Shrink	24	
5028-0	GFCI	Gray	Shrink	24	
5028-5	GFCI	Gray	Carded	6	
5028-6	GFCI	White	Carded	6	
5029-0	20A, 1.710" diameter	Gray	Shrink	12	
5030-0	30-50A, 2.150" diameter	Gray	Shrink	12	
5031-0	Single, 1.406" diameter	Gray	Shrink	12	
Horizontal Mount					
5001-0	Duplex	Gray	Shrink	24	
5002-0	GFCI	Gray	Shrink	24	

PROOF METAL SINGLE-GANG DEVICE COVERS

VERTICAL FLIP COVERS



5146-0 to
5146-5



5147-0



5103-0 to
5103-7



5104-0



5155-0 to
5155-6



5095-0



5091-0

APPLICATION

- For use whenever weatherproof protection is required for an outdoor receptacle.

PRODUCT FEATURES

- Rugged metallic construction
- State-of-the-art powder coat finish provides maximum weatherability and scratch resistance
- Self-closing lids assure weatherproof protection when the receptacle is not in use
- Includes installation hardware, gasket and multi-lingual instructions

COMPLIANCES

- – File E195978
- NEMA 3R Rated

CATALOG #	DESCRIPTION	COLOR	PKG. TYPE	STD. PKG.	BARCODE
Device Mount					
5146-0	Duplex	Gray	Shrink	24	
5146-1	Duplex	White	Shrink	24	
5146-5	Duplex	Gray	Carded	6	
5147-0	Duplex	Gray	Shrink	24	
5103-0	GFCI	Gray	Shrink	24	
5103-1	GFCI	White	Shrink	24	
5103-2	GFCI	Bronze	Shrink	24	
5103-5	GFCI	Gray	Carded	6	
5103-6	GFCI	White	Carded	6	
5103-7	GFCI	Bronze	Carded	6	
5104-0	GFCI	Gray	Shrink	24	
5155-0	Single, 1.406" diameter	Gray	Shrink	24	
5155-1	Single, 1.406" diameter	White	Shrink	24	
5155-5	Single, 1.406" diameter	Gray	Carded	6	
5155-6	Single, 1.406" diameter	White	Carded	6	
Box Mount					
5095-0	Duplex	Gray	Shrink	24	
5091-0	Single, 1.406" diameter	Gray	Shrink	24	

SEE END OF SECTION (PG D38) FOR DETAILED DRAWINGS >>

www.Hubbell-RTB.com



METAL SINGLE-GANG DEVICE COVERS

HORIZONTAL FLIP COVERS

APPLICATION

- For use whenever weatherproof protection is required for an outdoor receptacle.

PRODUCT FEATURES

- Rugged metallic construction
- State-of-the-art powder coat finish provides maximum weatherability and scratch resistance.
- Self-closing lids assure weatherproof protection when the receptacle is not in use.
- Includes installation hardware, gasket and multi-lingual instructions

COMPLIANCES

-  – File E195978
-  – Certified C22.2 No. 18
-  – NEMA 3R Rated



5180-0 to 5180-7



5181-0



5101-0 to 5101-7



5102-0



5152-0



5153-0



5712-5



5094-0

CATALOG #	DESCRIPTION	COLOR	PKG. TYPE	STD. PKG.	BARCODE
Device Mount					
5180-0	Duplex	Gray	Shrink	24	
5180-1	Duplex	White	Shrink	24	
5180-2	Duplex	Bronze	Shrink	24	
5180-5	Duplex	Gray	Carded	6	
5180-6	Duplex	White	Carded	6	
5180-7	Duplex	Bronze	Carded	6	
5181-0	Duplex	Gray	Shrink	24	
5101-0*	GFCI	Gray	Shrink	24	
5101-1*	GFCI	White	Shrink	24	
5101-2*	GFCI	Bronze	Shrink	24	
5101-5*	GFCI	Gray	Carded	6	
5101-6*	GFCI	White	Carded	6	
5101-7*	GFCI	Bronze	Carded	6	
5102-0	GFCI	Gray	Shrink	24	
5152-0	Single, 1.406" diameter	Gray	Shrink	24	
5153-0	Motor plug base, 1.600" diameter, 125V, 15A wiring device included	Gray	Shrink	12	
5712-5*	125V, 15A Duplex receptacle included	Gray	Carded	6	
Box Mount					
5094-0	Duplex	Shrink	24	Gray	

* C/UL Listed

SEE END OF SECTION (PG D39) FOR DETAILED DRAWINGS >>



PROOF

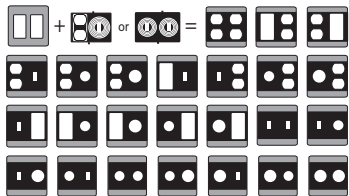
METAL TWO-GANG DEVICE COVERS

MULTI-CONFIGURATION



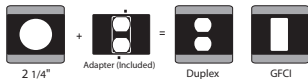
MX2050S, Z, WH

25 IN 1
CONFIGURATIONS



MX2150S

3 IN 1
CONFIGURATIONS



APPLICATIONS

- For use whenever weatherproof protection is required for an outdoor receptacle or switch.

PRODUCT FEATURES

- Heavy duty die-cast metal construction
- Patented Quick-Fit™ keyhole mounting system allows cover installation in under a minute.
- Includes gasket and mounting hardware
- Base configuration with patented Knock-Out™ technology for custom fitting
- Premium powdercoat finish
- Horizontal or vertical mount
- Lockable tab

COMPLIANCES

- – File E212332
- NEMA 3R Rated

U.S. Patents: 8,314,334; D 569,811

CATALOG #	DESCRIPTION	COLOR	PKG. TYPE	STD. PKG.	BARCODE
2-Gang Flip Covers					
MX2050S	2-Device 25-in-1	Gray	Shrink	8	
MX2050Z	2-Device 25-in-1	Bronze	Shrink	4	
MX2050WH	2-Device 25-in-1	White	Shrink	4	
MX2150S	1-Device 3-in-1	Gray	Shrink	6	

SEE END OF SECTION (PG D39) FOR DETAILED DRAWINGS >>

www.Hubbell-RTB.com



METAL TWO-GANG DEVICE COVERS

DIE CAST ALUMINUM RAYNTITE®

APPLICATION

- For use whenever weatherproof protection is required for an outdoor receptacle.

PRODUCT FEATURES

- Rugged die cast construction
- State-of-the-art powder coat finish provides maximum weatherability and scratch resistance.
- Self-closing lids assure weatherproof protection when the receptacle is not in use.
- Covers are padlockable, 1/4" dia. hole
- May be mounted to box or device
- Includes installation hardware, gasket and multi-lingual instructions

COMPLIANCES

-  – File E195978
-  – C22.2 No. 18
- NEMA 3R Rated



CATALOG #	DESCRIPTION	COLOR	PKG. TYPE	STD. PKG.	BARCODE
Vertical Mount – Padlockable					
5032-0	(2) Duplex	Gray	Shrink	6	
5033-0	(1) Duplex & (1) GFCI	Gray	Shrink	6	
5034-0	(1) 30-50A Receptacle 2.625" diameter	Gray	Shrink	6	
5036-0	(1) 30-50A Receptacle 2.156" diameter	Gray	Shrink	6	
5038-0	(2) Receptacles, 1.406" diameter	Gray	Shrink	6	
5040-0	(1) Single Receptacle, 1.406" diameter & (1) GFCI	Gray	Shrink	6	
5041-0	(2) Toggle	Gray	Shrink	6	
5042-0	(1) Toggle & (1) Duplex	Gray	Shrink	6	
5043-0	(1) Toggle & (1) GFCI	Gray	Shrink	6	
5045-0	(2) GFCI	Gray	Shrink	6	

PROOF

METAL TWO-GANG DEVICE COVERS



5148-0 TO 5148-5



5157-0



5132-0



5133-0



5160-0



5138-0



5145-0



5092-0



5096-0



5098-0

APPLICATION

- For use whenever weatherproof protection required for an outdoor receptacle.

PRODUCT FEATURES

- Rugged metallic construction
- State-of-the-art powder coat finish provides maximum weatherability and scratch resistance.
- Self-closing lids assure weatherproof protection when the receptacle is not in use.
- Includes installation hardware, gasket and multi-lingual instructions

COMPLIANCES

- – File E195978
- – File E195978 (#5132 - #5145)
- – C22.2 (#5132 - #5145)
- NEMA 3R Rated

CATALOG #	DESCRIPTION	COLOR	PKG. TYPE	STD. PKG.	BARCODE
Device Mount					
5132-0	(2) Duplex	Gray	Shrink	10	
5138-0	(2) Round, 1.406" Dia.	Gray	Shrink	10	
5148-0	(2) Duplex	Gray	Shrink	18	
5148-5	(2) Duplex	Gray	Carded	4	
5157-0	(2) Single, 1.406" dia.	Gray	Shrink	18	
5160-0	(1) Duplex & (1) Single, 1.406" dia.	Gray	Shrink	12	
Box Mount					
5096-0	(2) Duplex	Gray	Shrink	12	
5092-0	(2) Single, 1.406" dia.	Gray	Shrink	12	
5098-0	(1) Duplex & (1) Single, 1.406" dia.	Gray	Shrink	12	
5133-0	(1) Duplex, (1) GFCI	Gray	Shrink	10	
5145-0	(2) GFCI	Gray	Shrink	10	

SEE END OF SECTION (PG D40) FOR DETAILED DRAWINGS >>

www.Hubbell-RTB.com



METAL THREE-GANG DEVICE COVERS

MULTI-CONFIGURATION COVERS

APPLICATIONS

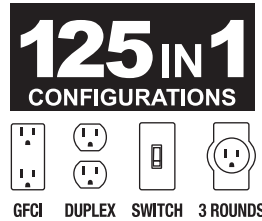
- For use whenever weatherproof protection is required for an outdoor receptacle or switch.

PRODUCT FEATURES

- Heavy duty die-cast metal construction
- Patented Quick-Fit™ keyhole mounting system allows cover installation in under a minute.
- Includes gasket and mounting hardware
- Base configuration with patented Knock-Out™ technology for custom fitting.
- Premium powdercoat finish
- Horizontal or vertical mount
- Lockable tab

COMPLIANCES

- UL – File E212332
- 2014 NEC® compliant
- NEMA 3R rated



MX3050S

CATALOG #	DESCRIPTION	COLOR	PKG. TYPE	STD. PKG.	BARCODE
Multi-Configuration 3-Gang Flip Covers					
MX3050S	3-Device 125-in-1	Gray	Shrink	5	

BOX MOUNT FLIP COVERS

APPLICATIONS

- For use whenever weatherproof protection is required for an outdoor receptacle.
- Blank covers for use whenever weatherproof protection is required for a multi-gang box

PRODUCT FEATURES

- Rugged metallic construction
- State-of-the-art powder coat finish provides maximum weatherability and scratch resistance
- Self-closing lids assure weatherproof protection when the receptacle is not in use
- Includes installation hardware, gasket, and multi-lingual instructions

COMPLIANCES

- UL – File E195978
- NEMA 3R Rated



5097-0



5093-0

CATALOG #	DESCRIPTION	COLOR	PKG. TYPE	STD. PKG.	BARCODE
3-Gang Flip Covers					
5097-0	(3) Duplex	Gray	Boxed	1	
5093-0	(3) Single, 1.406" dia.	Gray	Boxed	1	



FLIP COVER KITS



5839-5 TO 5839-7



5874-5 TO 5874-6



MK1250S, WH



APPLICATION

- For use in wet, damp, or dry locations

PRODUCT FEATURES

- Each kit is a convenient, complete weatherproof installation – no need to purchase **separate components**
- Easy to follow multi-lingual instructions included

COMPLIANCES

-  – File E313240
-  – File E346152 (5874 Series)

CATALOG #	DESCRIPTION	COLOR	PKG. TYPE	STD. PKG.	BARCODE
Complete Flip Cover Kits					
5839-5	Duplex	Gray	Box	4	
5839-5WRTR	WRTR Duplex	Gray	Box	4	
5839-6	Duplex	White	Box	4	
5839-6WRTR	WRTR Duplex	White	Box	4	
5839-7	Duplex	Bronze	Box	4	
5839-7WRTR	WRTR Duplex	Bronze	Box	4	
5874-5	GFCI	Gray	Box	4	
5874-6	GFCI	White	Box	4	
MK1250S	Duplex	Gray	Clamshell	4	
MK1250WH	Duplex	White	Clamshell	4	

SEE END OF SECTION (PG D41) FOR DETAILED DRAWINGS >>

www.Hubbell-RTB.com



METAL BLANK COVERS

APPLICATION

- For use whenever weatherproof protection is required for a weatherproof box.

PRODUCT FEATURES

- Rugged metallic construction
- State-of-the-art powder coat finish provides maximum weatherability and scratch resistance

COMPLIANCES

-  – File E195978
- NEMA 3R Rated

5173-0 to
5173-7

5174-0



5175-0 TO 5175-5



5177-0

CATALOG #	DESCRIPTION	COLOR	PKG. TYPE	STD. PKG.	BARCODE
One-Gang Blank Covers - Device Mount					
5173-0	Blank Cover	Gray	Shrink	50	
5173-1	Blank Cover	White	Shrink	50	
5173-2	Blank Cover	Bronze	Shrink	50	
5173-5	Blank Cover	Gray	Carded	12	
5173-6	Blank Cover	White	Carded	12	
5173-7	Blank Cover	Bronze	Carded	12	
One-Gang Blank Covers - Box Mount					
5174-0	Blank Cover	Gray	Shrink	50	
Two-Gang Blank Covers - Device Mount					
5175-0	Blank Cover	Gray	Shrink	25	
5175-1	Blank Cover	White	Shrink	25	
5175-2	Blank Cover	Bronze	Shrink	25	
5175-5	Blank Cover	Gray	Carded	6	
Three-Gang Blank Covers - Box Mount					
5177-0	Blank Cover	Gray	Boxed	10	



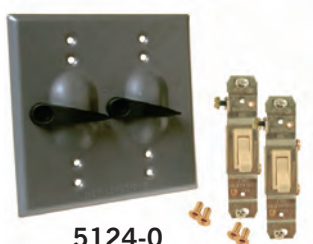
SEE END OF SECTION (PG D42) FOR DETAILED DRAWINGS >>

PROOF

METAL TOGGLE SWITCH COVERS



5121-0 to 5121-5
5141-0 to 5141-5
5128-0, 5137-0



5124-0



5125-0



5166-0 to 5166-5



5167-0



5126-0



5201-0

APPLICATION

- For use whenever weatherproof protection required for an "on-off" type switch

PRODUCT FEATURES

- Rugged metallic construction
- State-of-the-art powder coat finish provides maximum weatherability and scratch resistance.
- Includes installation hardware and multi-lingual instructions
- Most units supplied with a switch(es) – no need to purchase separate components
- Switch/cover units are supplied with the switch unassembled to the cover

COMPLIANCES

- – File E195978
- – Certified
- NEMA 3R Rated

CATALOG #	DESCRIPTION	COLOR	PKG. TYPE	STD. PKG.	BARCODE
Single-Gang Switch Covers – Vertical – Device Mounted					
5121-0	SP 125V, 10A	Gray	Shrink	24	
5121-1	SP 125V, 10A	White	Shrink	24	
5121-2	SP 125V, 10A	Bronze	Shrink	24	
5121-5	SP 125V, 10A	Gray	Carded	6	
5141-0	3-Way 125V, 6A or 250V, 3A	Gray	Shrink	8	
5141-5	3-Way 125V, 6A or 250V, 3A	Gray	Carded	6	
5128-0	SP 120-277VAC, 20A	Gray	Shrink	20	
5137-0	DP 120-277VAC, 20A	Gray	Shrink	20	
Two-Gang Switch Covers – Device Mounted					
5124-0	(2) SP 125V, 10A	Gray	Shrink	8	
5125-0	Cover only	Gray	Shrink	8	
5166-0	(1) SP 125V, 10A & (1) Duplex receptacle	Gray	Shrink	8	
5166-5	(1) SP 125V, 10A & (1) Duplex receptacle	Gray	Carded	4	
5167-0	2 Gang, Switch/GFCI Cover box mount	Gray	Shrink	8	
Three-Gang Switch Cover – Device Mount					
5126-0	(3) SP 125V, 10A	Gray	Boxed	1	
Toggle Switch					
5201-0	SP 125V, 10A Toggle switch	–	Polybag	10	

SEE END OF SECTION (PG D42) FOR DETAILED DRAWINGS >>

www.Hubbell-RTB.com



DIE CAST LAMPHOLDER/CLUSTER COVERS

APPLICATIONS

- For use with BELL® single-gang rectangular or round weather-proof boxes.
- Cluster covers provide an easy means of mounting BELL® lampholders and other accessories.

PRODUCT FEATURES

- Rugged die cast construction
- State-of-the-art powder coat finish provides maximum weatherability and scratch-resistance.
- Includes installation hardware, gasket and multi-lingual instructions
- Three-hole covers are supplied with two closure plugs.

COMPLIANCES

-  – Standard 514A
-  – Certified - C22.2 #18



5186-0 to
5186-7



5189-0 to
5189-7



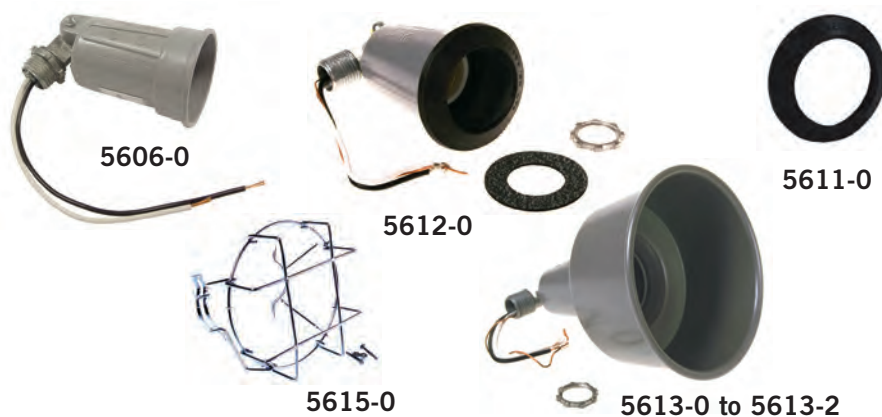
5193-0 to
5193-7



5197-0 to
5197-7

CATALOG #	DESCRIPTION	COLOR	PKG. TYPE	STD. PKG.	BARCODE
Rectangular Cluster Covers					
5186-0	1-1/2" Outlet	Gray	Shrink	20	
5186-1	1-1/2" Outlet	White	Shrink	20	
5186-2	1-1/2" Outlet	Bronze	Shrink	20	
5186-5	1-1/2" Outlet	Gray	Carded	6	
5186-6	1-1/2" Outlet	White	Carded	6	
5186-7	1-1/2" Outlet	Bronze	Carded	6	
5189-0	3-1/2" Outlets	Gray	Shrink	20	
5189-1	3-1/2" Outlets	White	Shrink	20	
5189-2	3-1/2" Outlets	Bronze	Shrink	20	
5189-5	3-1/2" Outlets	Gray	Carded	6	
5189-6	3-1/2" Outlets	White	Carded	6	
5189-7	3-1/2" Outlets	Bronze	Carded	6	
4" Round Cluster Covers					
5193-0	1-1/2" Outlet	Gray	Shrink	20	
5193-1	1-1/2" Outlet	White	Shrink	20	
5193-2	1-1/2" Outlet	Bronze	Shrink	20	
5193-5	1-1/2" Outlet	Gray	Carded	6	
5193-6	1-1/2" Outlet	White	Carded	6	
5193-7	1-1/2" Outlet	Bronze	Carded	6	
5197-0	3-1/2" Outlets	Gray	Shrink	20	
5197-1	3-1/2" Outlets	White	Shrink	20	
5197-2	3-1/2" Outlets	Bronze	Shrink	20	
5197-5	3-1/2" Outlets	Gray	Carded	6	
5197-6	3-1/2" Outlets	White	Carded	6	
5197-7	3-1/2" Outlets	Bronze	Carded	6	

DIE CAST LAMPHOLDERS



CATALOG #	DESCRIPTION	COLOR	PKG. TYPE	STD. PKG.	BARCODE
Lampholders and Accessories for 75-150 Watt Par 38 Lamps					
5606-0	Lampholder	Gray	Shrink	30	
5606-1	Lampholder	White	Shrink	30	
5606-2	Lampholder	Bronze	Shrink	30	
5606-5	Lampholder	Gray	Carded	6	
5606-6	Lampholder	White	Carded	6	
5606-7	Lampholder	Bronze	Carded	6	
5612-0	Lampholder w/gasket	Gray	Shrink	30	
5611-0	Outer gasket only, replacement gasket for 5612-0	—	Polybag	15	
5615-0	Wire guard only	—	Shrink	5	
Architectural Lampholders for 75-150 Watt Par 38 Lamps					
5613-0	Lampholder	Gray	Shrink	4	
5613-1	Lampholder	White	Shrink	4	
5613-2	Lampholder	Bronze	Shrink	4	

APPLICATIONS

- For outdoor or indoor lighting use
- May be used with BELL® cluster covers and boxes.

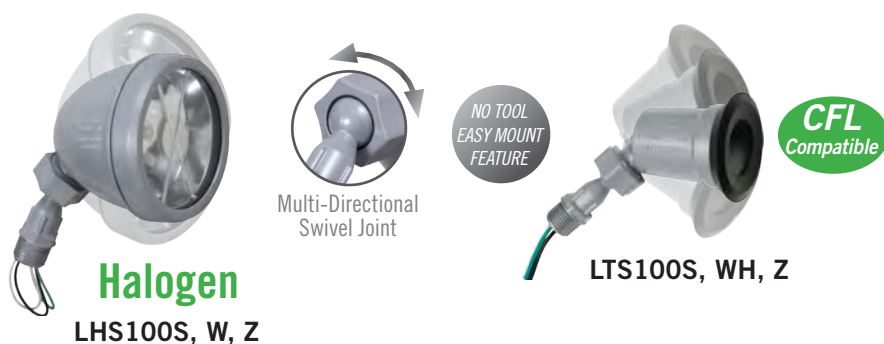
PRODUCT FEATURES

- Rugged metallic construction
- State-of-the-art powder coat finish provides maximum weatherability and scratch-resistance.
- Locking swivel knuckle assures positive lamp positioning and provides pin-point directional aiming.
- Extra long wire leads for easy hook-up
- Each lampholder supplied with a porcelain socket, inside gasket, 1/2" locknut and multi-lingual instructions.

COMPLIANCES

- — Standard 1598
- — Certified C22.2 No. 18

SWIVEL JOINT LAMPHOLDERS



APPLICATIONS

- For general outdoor lighting use in wet, damp or dry locations.

PRODUCT FEATURES

- Superior commercial quality die-cast metal construction
- Premium powdercoat finish
- LTS100 include porcelain sockets and external weatherproof gaskets are CFL compatible.
- LHS uses halogen bulb which compared to incandescent bulbs, last up to 3 times longer and produce almost 50% more light for the same amount of energy.
- Patented no-tool easy-mount feature
- Patented swivel joint for easy directional lighting.

COMPLIANCES

- — File E310337
 - 2014 NEC® compliant
 - NEMA 3R Rated
- U.S. Patent 7,695,170

CATALOG #	DESCRIPTION	COLOR	PKG. TYPE	STD. PKG.	BARCODE
Halogen Swivel Lampholder					
LHS100S	75W Halogen Bulb Included (GY 8.6 TYPE 4)	Gray	Shrink	6	
LHS100W	75W Halogen Bulb Included (GY 8.6 TYPE 4)	White	Shrink	6	
LHS100Z	75W Halogen Bulb Included (GY 8.6 TYPE 4)	Bronze	Shrink	6	
Traditional or CFL Swivel Lampholder					
LTS100S	Uses Par 38 Bulb (150W Maximum, Not Included)	Gray	Shrink	10	
LTS100WH	Uses Par 38 Bulb (150W Maximum, Not Included)	White	Shrink	10	
LTS100Z	Uses Par 38 Bulb (150W Maximum, Not Included)	Bronze	Shrink	10	

SEE END OF SECTION (PG D43) FOR DETAILED DRAWINGS >>

www.Hubbell-RTB.com



METAL BULLET LAMPHOLDER AND PORTABLE LAMPHOLDERS

APPLICATION

- For general outdoor lighting use
- May be used with BELL® cluster covers and boxes.

PRODUCT FEATURES

- Rugged die cast
- Locking swivel knuckle
- Assure positive lamp positioning and provides pinpoint directional aiming
- Includes installation hardware and multilingual instructions

COMPLIANCES

- C  US



5820-8

CATALOG #	DESCRIPTION	COLOR	PKG. TYPE	STD. PKG.	BARCODE
Bullet Lampholders - for 75-150 Watt Par 38 and R-40 Lamps					
5820-8	Green	Lampholder	Boxed	2	

PORTABLE LAMPHOLDERS


APPLICATIONS

- For general outdoor lighting use in wet, damp or dry locations.

PRODUCT FEATURES

- Rugged die-cast construction
- State-of-the-art powder coat finish provides maximum weatherability and scratch-resistance.
- Locking swivel knuckle assures positive lamp positioning and provides pin-point directional aiming.
- SPLED2Z – Long Lasting Energy Efficient 6.5 Watts/350 Lumens

COMPLIANCES

-  – File E310318 (SL101B)
- 2014 NEC® compliant
- NEMA 3R rated

CFL
Compatible

SL101B

LED

SPLED2Z



5792-0

CATALOG #	DESCRIPTION	COLOR	PKG. TYPE	STD. PKG.	BARCODE
Portable Spike Lights					
SPLED2Z	LED Bulb Included (350 Lumens)	Bronze	Clamshell	4	
SL101B	Uses Par 38 Bulb (150W Maximum, Not Included)	Bronze	Clamshell	10	
5792-0	Spike, 6 ft. cord & plug	Gray	Polybag	12	

PROOF

DIE CAST LAMPHOLDER COMBINATIONS



5620-0



5621-0 TO 5621-6



5624-0 TO 5624-6



5625-0 TO 5625-7

APPLICATION

- For use with BELL® single-gang rectangular or round weatherproof boxes.

PRODUCT FEATURES

- Rugged metallic construction
- State-of-the-art powder coat finish provides maximum weatherability and scratch-resistance.
- Each combination kit is a complete weatherproof installation – no need to purchase separate components.
- Includes installation hardware, gasket and multi-lingual instructions

COMPLIANCES

- – File E225082
- – Certified C22.2 No. 18

CATALOG #	DESCRIPTION	COLOR	PKG. TYPE	STD. PKG.	BARCODE
Rectangular Cover – Combinations for 75-150 Watt Par 38 Lamps					
5620-0	(1) Lampholder	Gray	Shrink	8	
5621-0	(2) Lampholders	Gray	Shrink	8	
5621-5	(2) Lampholders	Gray	Carded	4	
5621-6	(2) Lampholders	White	Carded	4	
4" Round Cover – Combinations for 75-150 Watt Par 38 Lamps					
5624-0	(1) Lampholder	Gray	Shrink	8	
5624-1	(1) Lampholder	White	Shrink	8	
5624-2	(1) Lampholder	Bronze	Shrink	8	
5624-5	(1) Lampholder	Gray	Carded	4	
5624-6	(1) Lampholder	White	Carded	4	
5625-0	(2) Lampholders	Gray	Shrink	8	
5625-1	(2) Lampholders	White	Shrink	8	
5625-2	(2) Lampholders	Bronze	Shrink	8	
5625-5	(2) Lampholders	Gray	Carded	4	
5625-6	(2) Lampholders	White	Carded	4	
5625-7	(2) Lampholders	Bronze	Carded	4	

SEE END OF SECTION (PG D45) FOR DETAILED DRAWINGS >>

www.Hubbell-RTB.com



LIGHT KITS

APPLICATION

- For general use in wet, damp or dry locations.

PRODUCT FEATURES

- Each kit is a complete weatherproof installation – no need to purchase separate components.
- Each kit includes easy-to-follow multi-lingual instructions.
- All kit components are described in the preceding pages.

COMPLIANCES

- UL



5883-5 to 5883-6



5818-5 to 5818-6



5829-5 to 5829-6



5876-5 to 5876-6

CATALOG #	DESCRIPTION	COLOR	PKG. TYPE	STD. PKG.	BARCODE
Rectangular Light Kits for 75-150 Watt Par 38 Lamps					
5883-5	Box, cover, photocell & (2) lampholders	Gray	Boxed	4	
5883-6	Box, cover, photocell & (2) lampholders	White	Boxed	4	
5818-5	Box, cover & (2) lampholders	Gray	Boxed	4	
5818-6	Box, cover & (2) lampholders	White	Boxed	4	
4" Round Light Kits for 75-150 Watt Par 38 Lamps					
5829-5	Box, cover & (2) lampholders	Gray	Boxed	4	
5829-6	Box, cover & (2) lampholders	White	Boxed	4	
5841-5	Box, cover, photocell & (2) lampholders	Gray	Boxed	4	
5841-6	Box, cover, photocell & (2) lampholders	White	Boxed	4	
5876-5	Box, cover & (2) architectural lampholders	Gray	Boxed	4	
5876-6	Box, cover & (2) architectural lampholders	White	Boxed	4	
5876-7	Box, cover & (2) architectural lampholders	Bronze	Boxed	4	

PROOF METALLIC GARDEN LIGHTS



5884-8



5893-8



5694-0



5695-0

APPLICATION

- For accent lighting along walkways, driveways, terraces, porches and garden areas.

PRODUCT FEATURES

- Rugged die cast construction
- State-of-the-art powder coat finish provides maximum weatherability and scratch-resistance.
- Includes screw-in clear glass globe, wire connectors, gasket, and multi-lingual instructions
- Three-tier lights accept 40W maximum lamps
- Four-tier lights accept 60W maximum lamps

COMPLIANCES

- 

CATALOG #	DESCRIPTION	COLOR	PKG. TYPE	STD. PKG.	BARCODE
Incandescent Type Threaded 1/2" Npt - 18" Leads					
5884-8	3-Tier	Green	Box	2	
5893-8	4-Tier	Green	Box	2	
Replacement Globes for Garden					
5694-0	For 3-tier	Clear	Carton	4	
5695-0	For 4-tier	Clear	Carton	4	

SEE END OF SECTION (PG D45) FOR DETAILED DRAWINGS >>

www.Hubbell-RTB.com



PHOTOCELL

APPLICATION

- Used for darkness activated automatic control of night lighting from dusk to dawn. Switch may be used to control porch lights, garden lights, post lanterns, barn lights, loading dock lights, outdoor signs and the like.

PRODUCT FEATURES

- Durable weatherproof construction
- Built-in time delay prevents operation triggered by auto headlamps or other temporary light flashes.



5638-5



PE100

CATALOG #	DESCRIPTION	COLOR	PKG. TYPE	STD. PKG.	BARCODE
Photoelectric Eye Switch					
5638-5	Swivel Switch, locknut 2000W Tungsten 1800VA Ballast 120V 50-60HZ	Gray	Carded	6	
PE100	Outdoor Photoelectric Switch Rated 1000 Watts, Fits 1/2" Hole	Black	Poly Bag	20	

METAL CLOSURE PLUGS

APPLICATION

- For use with BELL® weatherproof boxes, extension adapters, cluster covers and round splice boxes to seal off unused outlets.

PRODUCT FEATURE

- Gray closure plugs are zinc die cast
- White and bronze closure plugs are nonmetallic

COMPLIANCES

- UL – File E195973



5269-0 to 5269-10, 5270-0 to 5270-9, 5271-0

CATALOG #	DESCRIPTION	COLOR	PKG. TYPE	STD. PKG.	BARCODE
Closure Plugs					
5269-0	1/2" NPT	Gray	75 Polybags of 4	75 bags*	
5269-1	1/2" NPT	White	75 Polybags of 4	75 bags*	
5269-2	1/2" NPT	Bronze	75 Polybags of 4	75 bags*	
5269-5	1/2" NPT	Gray	12 Cards of 3	12 cards**	
5269-6	1/2" NPT	White	12 Cards of 3	12 cards**	
5269-7	1/2" NPT	Bronze	12 Cards of 3	12 cards**	
5269-9	1/2" NPT	Gray	Bulk	1000	—
5269-10	1/2" NPT	Bronze	Bulk	1000	—
5270-0	3/4" NPT	Gray	75 Polybags of 4	75 bags*	
5270-1	3/4" NPT	White	75 Polybags of 4	75 bags*	
5270-5	3/4" NPT	Gray	12 Cards of 3	12 cards**	
5270-9	3/4" NPT	Gray	Bulk	1000	—
5271-0	1" NPT	Gray	75 Polybags of 4	75 bags*	

*Order in standard package bag quantities only – not per piece

**Order in standard package card quantities only – not per piece

BOX MOUNTING LUGS



5302-0

CATALOG #	DESCRIPTION	COLOR	PKG. TYPE	STD. PKG.	BARCODE
5302-0	Box Mounting Lugs & Screws	—	100 Polybags of 2	100	

ROUND CLOSURE PLATES



5652-1



5653-1



5654-1

APPLICATION

- Use in dry locations for closure of unused ceiling outlets.

PRODUCT FEATURES

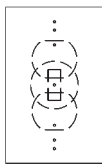
- Rugged metallic construction
- State-of-the-art powder coat paint finish provides a scratch-resistant surface.

COMPLIANCES

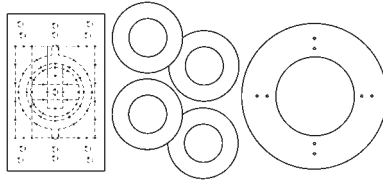
- – File E195978

CATALOG #	DESCRIPTION	COLOR	PKG. TYPE	STD. PKG.	BARCODE
5" Round Closure Plates – Steel					
5652-1	Screw & universal mount strap	Off White	Shrink	10	
5653-1	(2) 8 - 32 screws, direct mount to fixture outlet box	Off White	Shrink	10	
5654-1	Fixture stud & universal mount strap	Off White	Shrink	10	

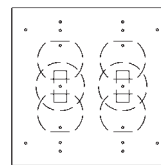
REPLACEMENT GASKETS



5019-0



5017-0



5020-0

APPLICATION

- Replacement gaskets for BELL® weatherproof covers and lampholders

PRODUCT FEATURES

- Each gasket has cut outs for a toggle switch, duplex receptacle and 1.406" dia. round receptacle.
- Remove the cut outs for the duplex and round receptacles for a GFCI receptacle opening.

CATALOG #	DESCRIPTION	COLOR	PKG. TYPE	STD. PKG.	BARCODE
Rectangular Box/Cover Gaskets					
5019-0	1-Gang	Black	20 Cello bags of 2	20	
5020-0	2-Gang	Black	20 Cello bags of 2	20	
5017-0	1 Gang cover gasket, 4 Lampholder gaskets	Black	20 Cello bags	20	

SEE END OF SECTION (PG D46) FOR DETAILED DRAWINGS >>

www.Hubbell-RTB.com



NON-METALLIC BOXES

OUTLET BOXES

APPLICATIONS

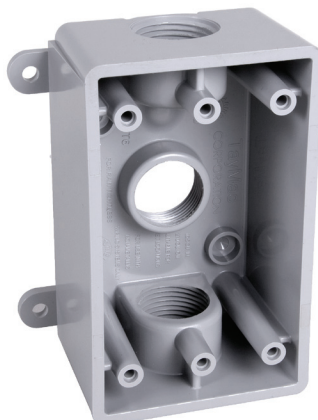
- For general use whenever weatherproof protection is required.

PRODUCT FEATURES

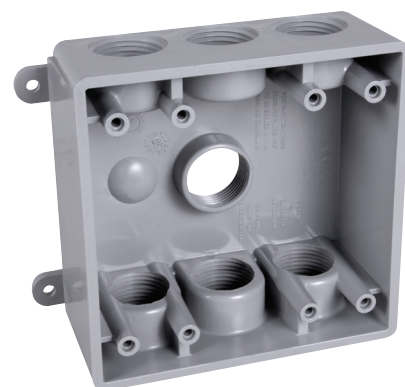
- Durable high impact PVC construction
- Can be used for 1/2" and 3/4" conduit
- Includes 3/4" closure plugs and reducer bushings

COMPLIANCES

- Marine  LISTED
- 2014 NEC® compliant
- NEMA 3R rated



PSB37550GY
PSB37550WH



PDB77550GY
PDB77550WH



PRB57550GY
PRB57550WH

CATALOG #	DESCRIPTION	CU. IN. (CM ³)	COLOR	PKG. TYPE	STD. PKG.	BARCODE
1-Gang Outlet Boxes						
PSB37550GY	Three 1/2" or 3/4" Holes 2.0" Depth	16.5 (270.4)	Gray	Shrink	8	
PSB37550WH	Three 1/2" or 3/4" Holes 2.0" Depth	16.5 (270.4)	White	Shrink	5	
2-Gang Outlet Boxes						
PDB77550GY	Seven 1/2" or 3/4" Holes 2.0" Depth	26.5 (270.4)	Gray	Shrink	6	
PDB77550WH	Seven 1/2" or 3/4" Holes 2.0" Depth	26.5 (434.3)	White	Shrink	6	
Round Outlet Box						
PRB57550GY	Five 1/2" / 3/4" Holes 1.125" Depth	13.5 (221.2)	Gray	Shrink	8	
PRB57550WH	Five 1/2" / 3/4" Holes 1.125" Depth	13.5 (221.2)	White	Shrink	8	

SEE END OF SECTION (PG D47) FOR DETAILED DRAWINGS »



BLANK COVERS



PBC100GY
PBC100WH



PBC200GY
PBC200WH



PBC300GY
PBC300WH

APPLICATIONS

- For general use whenever weatherproof protection is required.

PRODUCT FEATURES

- Durable high impact polycarbonate construction
- Includes attached gasket and mounting hardware

COMPLIANCES

- LISTED
- 2014 NEC® compliant
- NEMA 3R rated

RECEPTACLE COVERS

Patented Horseshoe Adapter Ensures a Snug Fit for Small and Large Head Switches



PTC100GY
PTC100WH

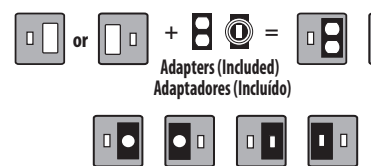


PTC200GY



PTC521GY
PTC521WH

8 IN 1
CONFIGURATIONS



CATALOG #	DESCRIPTION	COLOR	PKG. TYPE	STD. PKG.	BARCODE
Blank Covers					
PBC100GY	Blank	Gray	Shrink	12	
PBC100WH	Blank	White	Shrink	12	
PBC200GY	Blank 2-Gang	Gray	Shrink	10	
PBC200WH	Blank 2-Gang	White	Shrink	10	
PBC300GY	Blank Round	Gray	Shrink	10	
PBC300WH	Blank Round	White	Shrink	10	
1-Gang Device Covers					
PTC100GY	Toggle	Gray	Shrink	8	
PTC100WH	Toggle	White	Shrink	8	
2-Gang Device Covers					
PTC200GY	Toggle/Toggle	Gray	Shrink	4	
PTC521GY	Toggle/GFCI	Gray	Shrink	4	
PTC521WH	Toggle/GFCI	White	Shrink	4	

SEE END OF SECTION (PG D48) FOR DETAILED DRAWINGS >>

www.Hubbell-RTB.com



LAMP HOLDERS

APPLICATIONS

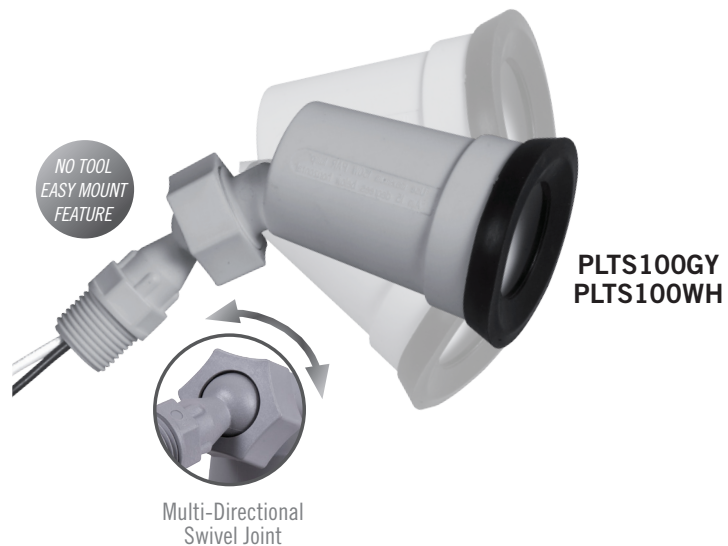
- For general outdoor lighting use in wet, damp or dry locations.

PRODUCT FEATURES

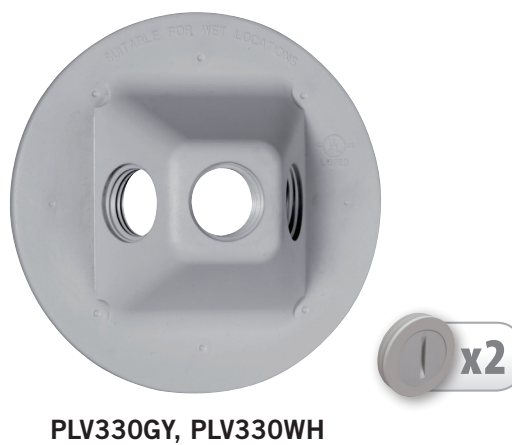
- Durable high impact PBT construction
- Includes attached gasket and mounting hardware

COMPLIANCES

- UL LISTED
- 2014 NEC® compliant
- NEMA 3R rated



LAMP HOLDER COVERS



CATALOG #	DESCRIPTION	COLOR	PKG. TYPE	STD. PKG.	BARCODE
Lampholders					
PLTS100GY	Swivel Lampholder	Gray	Shrink	12	
PLTS100WH	Swivel Lampholder	White	Shrink	12	
Lampholder Covers					
PLV330GY	Three 1/2" Holes	Gray	Shrink	8	
PLV330WH	Three 1/2" Holes	White	Shrink	8	



NON-METALLIC CLOSURE PLUGS



PCP47550GY
PCP47550WH

CATALOG #	DESCRIPTION	COLOR	PKG. TYPE	STD. PKG.	BARCODE
Closure Plug Assortment (Pack of 4)					
PCP47550GY	Two 1/2", Two 3/4"	Gray	Poly Bag	30	
PCP47550WH	Two 1/2", Two 3/4"	White	Poly Bag	30	

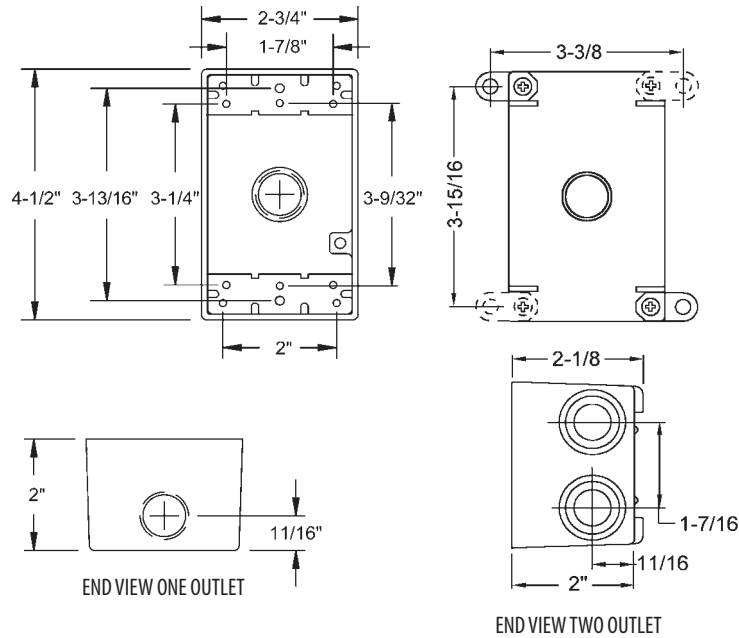
SEE END OF SECTION (PG D49) FOR DETAILED DRAWINGS >>

www.Hubbell-RTB.com

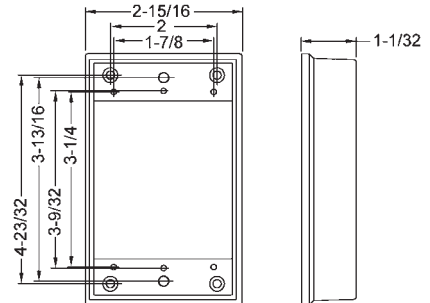


DIE CAST ALUMINUM BOXES AND EXTENSION RINGS

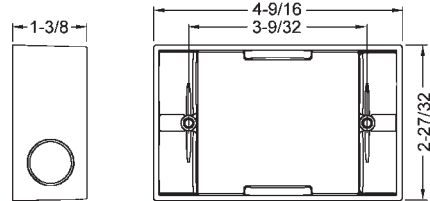
SINGLE-GANG BOXES (General Dimensions)



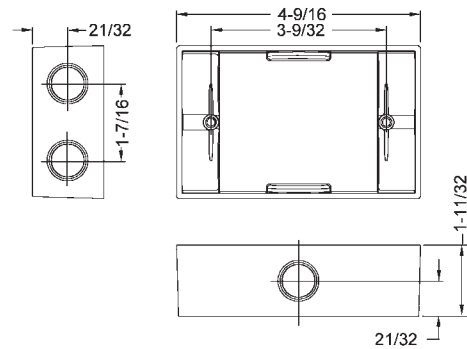
EXTENSIONS: 5406-0



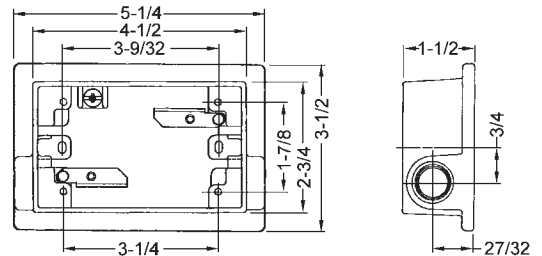
EXTENSIONS: 5399-0, 5403-0



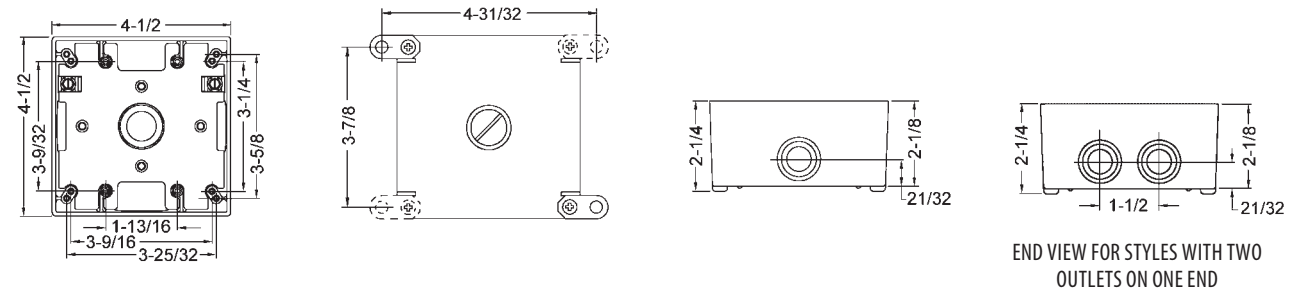
EXTENSIONS: 5400-0 SERIES



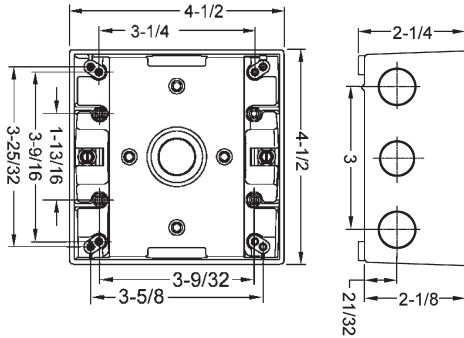
SWING ARM EXTENSION ADAPTERS: 5412-0 TO 5415-0



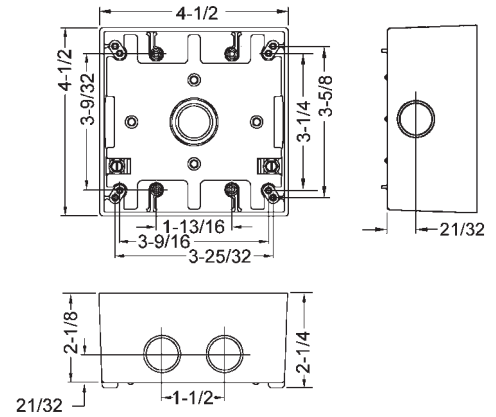
TWO-GANG BOXES (General Dimensions)



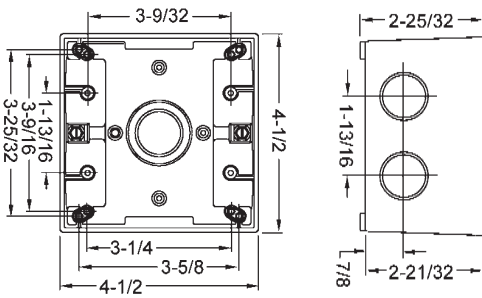
TWO-GANG BOXES WITH 7 OUTLETS
CAT. NOs. 5340-0, 5348-0



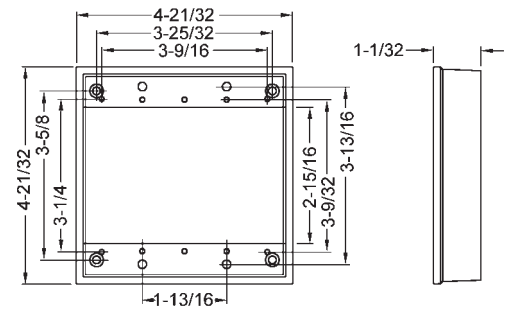
CAT. NOs. 5338-0, 5346-0



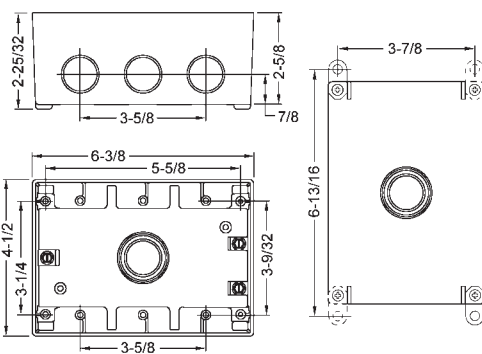
TWO-GANG BOXES WITH 5 OUTLETS
CAT. NOs. 5388-0, 5389-0



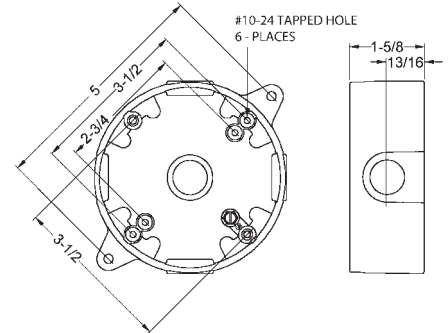
TWO-GANG EXTENSION



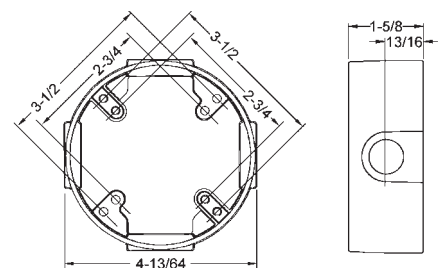
THREE-GANG BOX



4" ROUND SPLICE BOXES

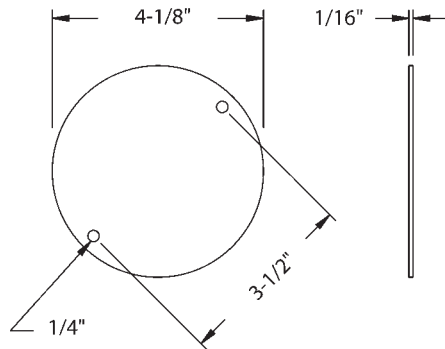


4" ROUND EXTENSION ADAPTERs



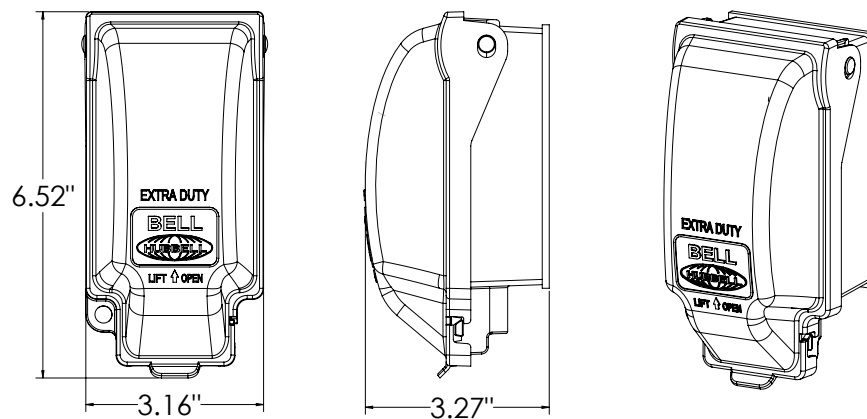
METALLIC ROUND BOX COVER

4" ROUND COVER

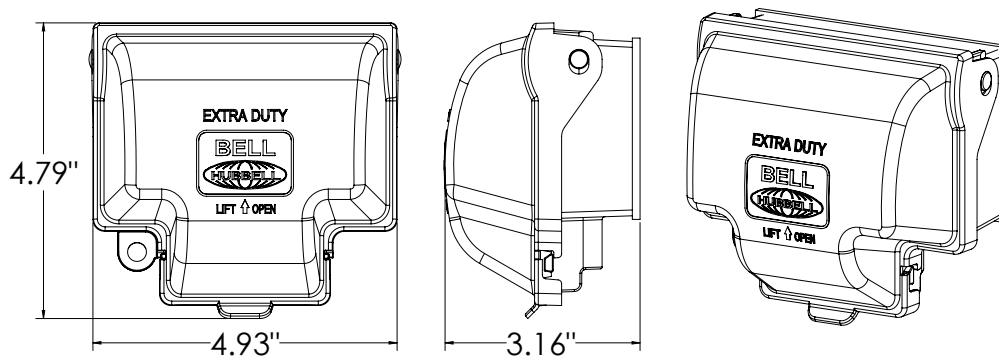


RAYNGUARD WHILE-IN-USE METALLIC COVERS

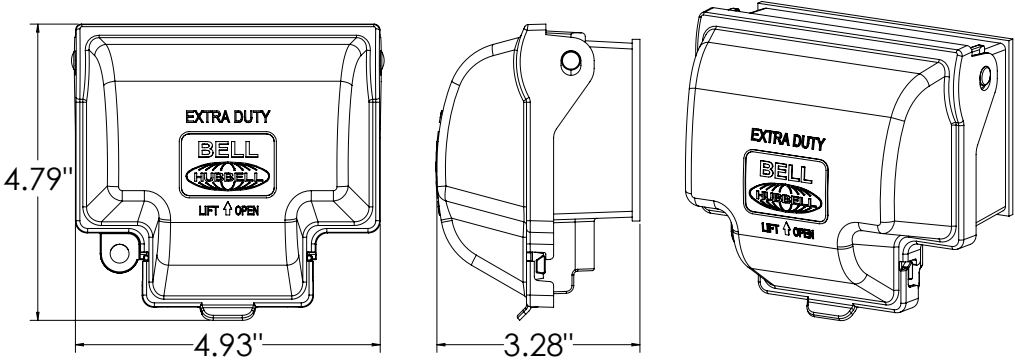
5881-0, 5852-0



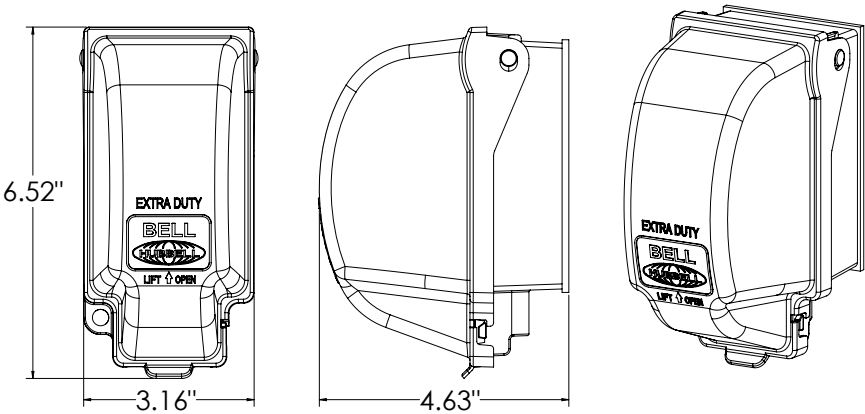
5802-0



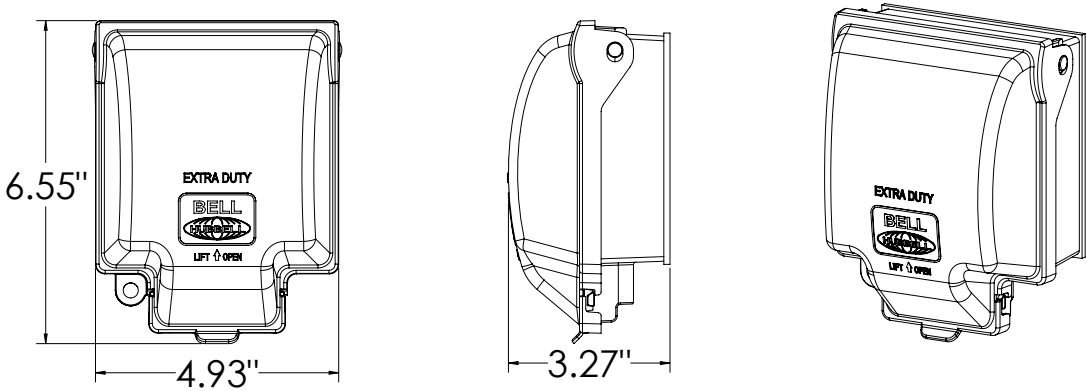
5861-0



5830-0

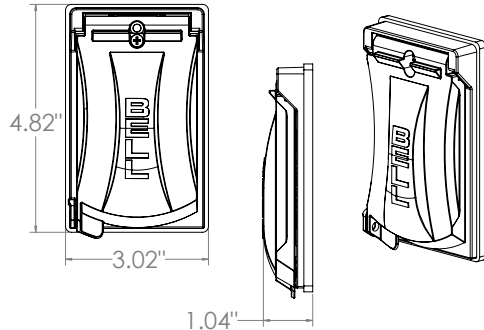


5885-0, 5880-0, 5876-0

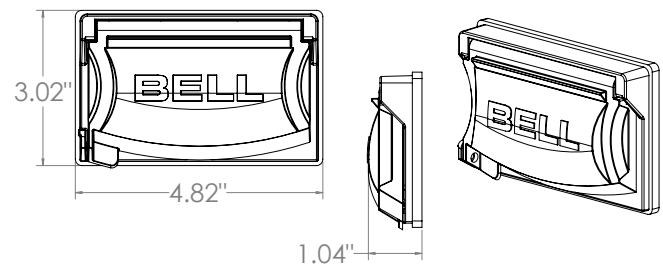


METALLIC SINGLE-GANG DEVICE COVERS

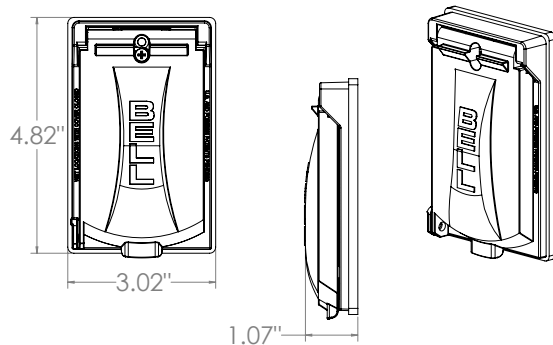
MX1050



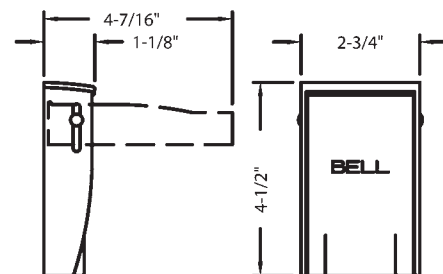
MX1250



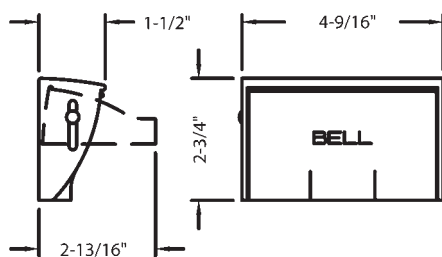
MX1550



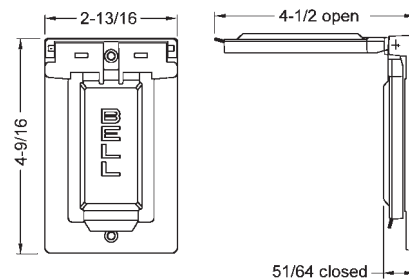
RAYNTITE® SINGLE-GANG DEVICE COVERS – VERTICAL



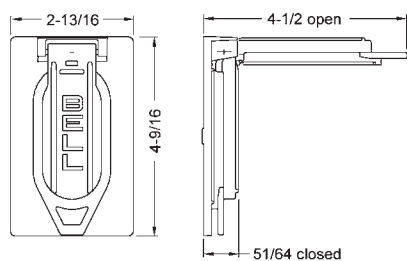
RAYNTITE® SINGLE-GANG DEVICE COVERS – HORIZONTAL



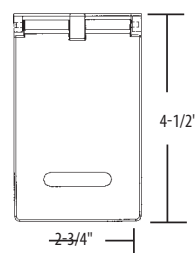
GFCI STYLE COVERS



DUPLEX STYLE COVER

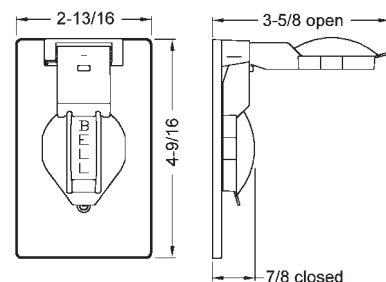


CAT. NO. 5104-0, 5147-0

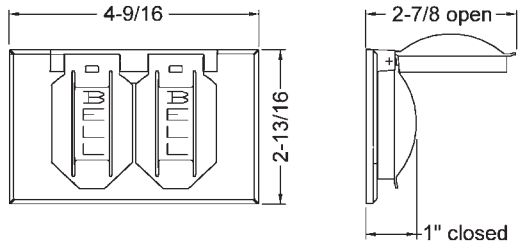


SINGLE RECEPTACLE STYLE COVERS

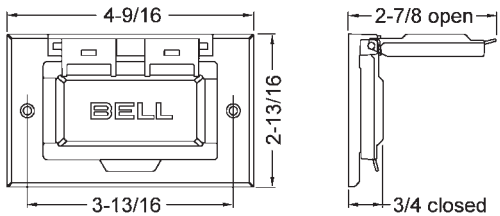
Note: device-mount and box-mount cover dimensions are the same



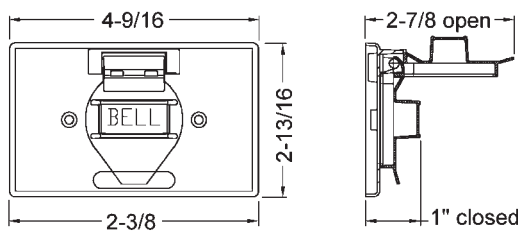
CAT. NOS. 5180-0 SERIES, 5712-5, 5094-0



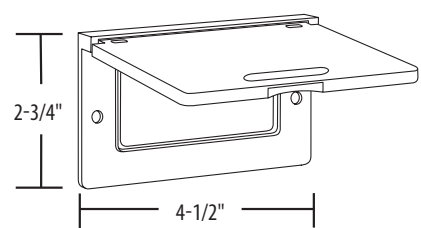
CAT. NO. 5101-0 series



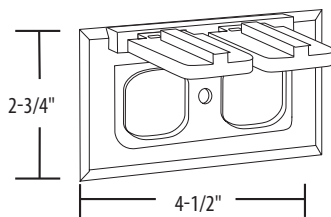
CAT. NO. 5152-0



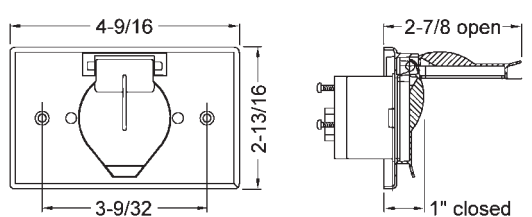
CAT. NO. 5102-0



CAT. NO. 5181-0

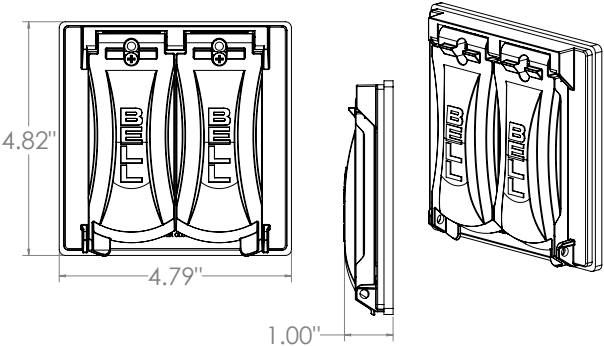


CAT. NO. 5153-0

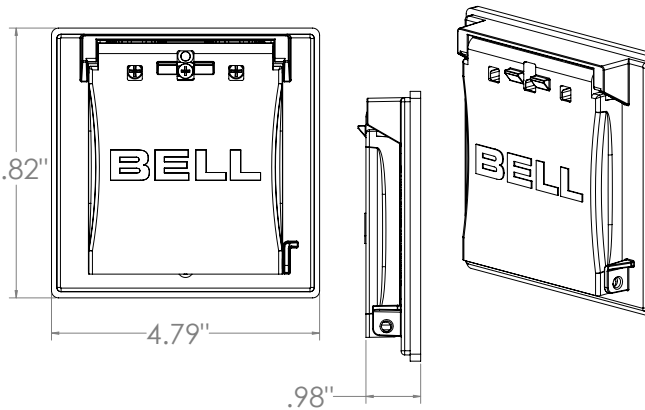


METALLIC TWO-GANG DEVICE COVERS

MX2050

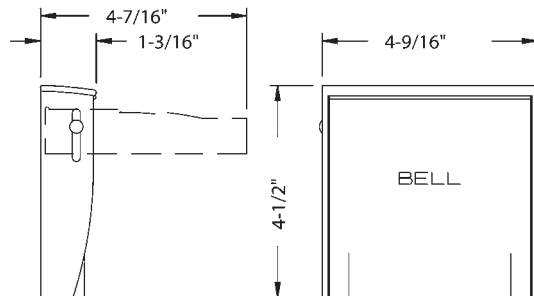


MX2150

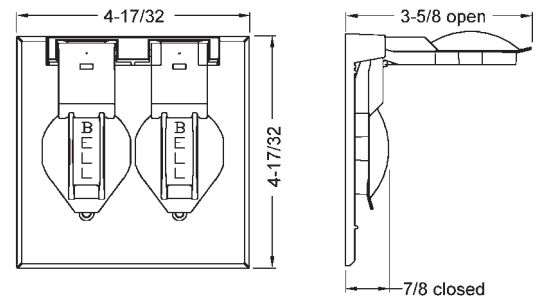


METALLIC TWO-GANG DEVICE COVERS

RAYNTITE®

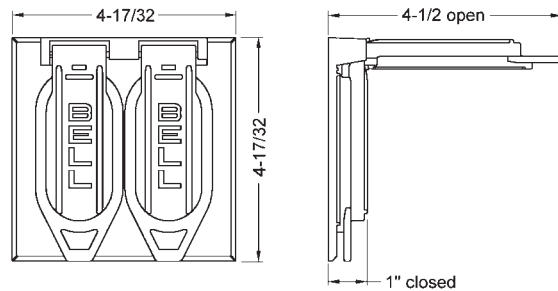


5157-0, 5092-0

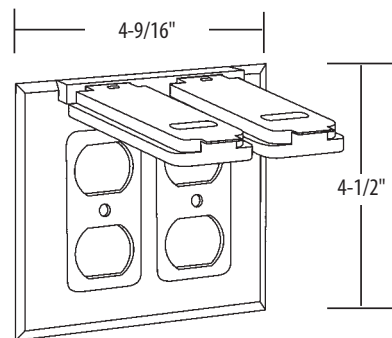


Note: Dimensions are the same for device mount and box mount styles shown. 5157-0 SERIES, 5092-0

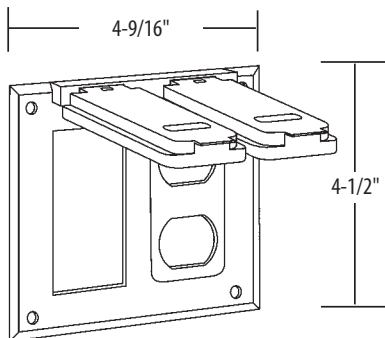
TWO-GANG DEVICE COVERS 5148-0 SERIES, 5096-0, 5160-0, 5098-0



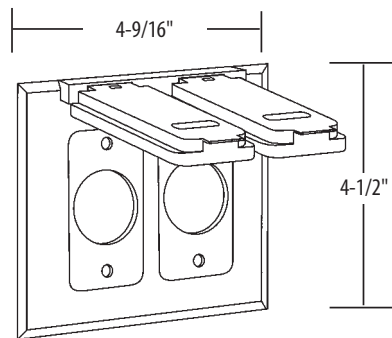
5132-0



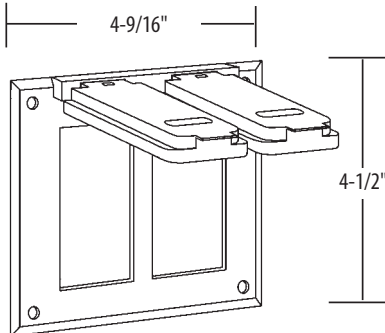
5133-0



5138-0

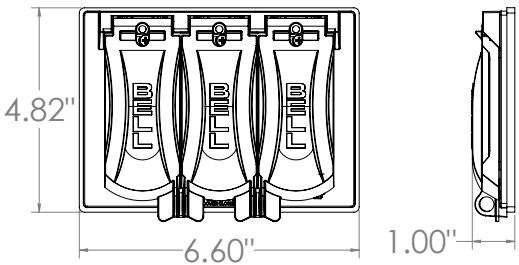


5145-0

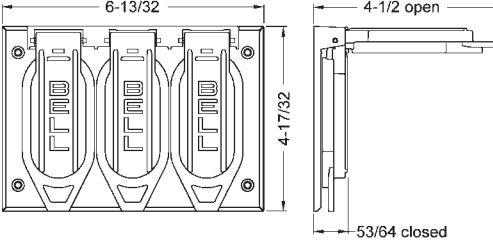


THREE-GANG DEVICE COVERS

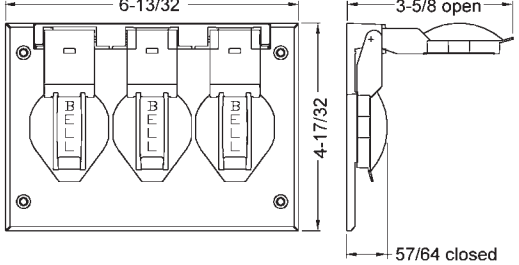
MX3050



5097-0

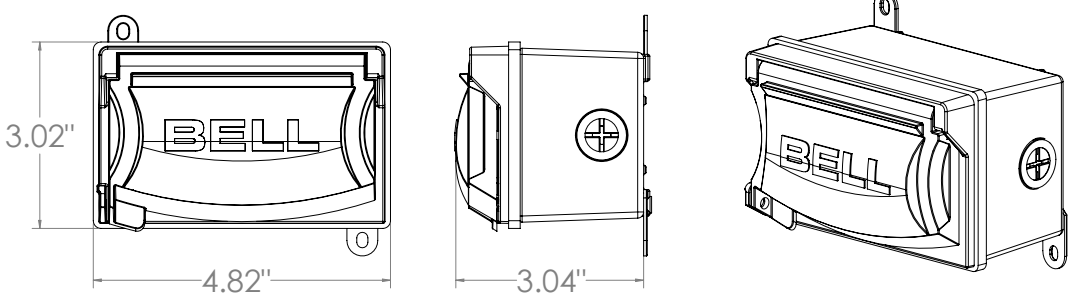


5093-0



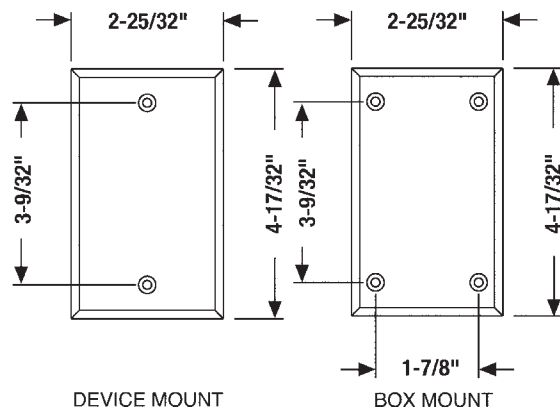
METALLIC COMPLETE COVER KITS

MK1250

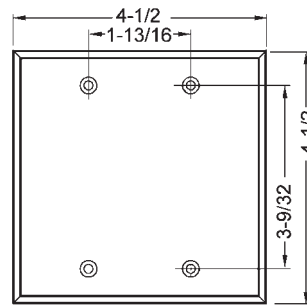


METALLIC BLANK COVERS

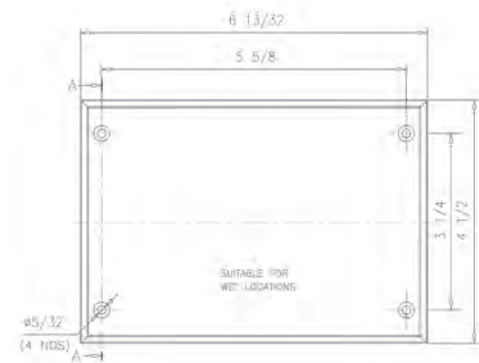
SINGLE-GANG BLANK COVERS



TWO-GANG

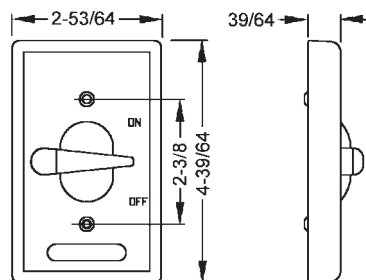


THREE-GANG

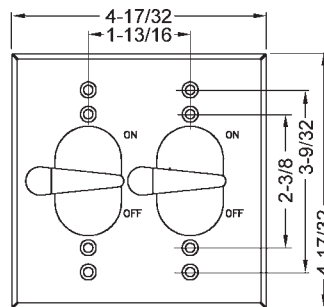


METALLIC TOGGLE SWITCH COVERS

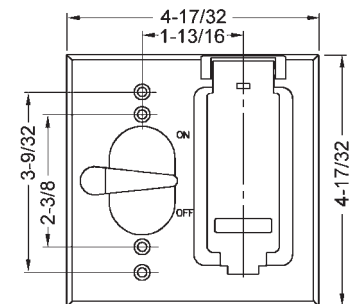
SINGLE-GANG 5121 SERIES 5141 SERIES CAT. NOS. 5128-0, 5137-0



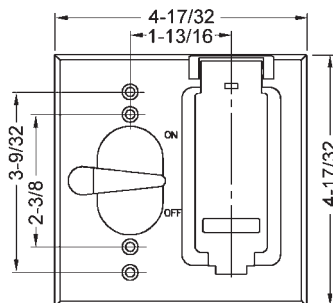
TWO-GANG CAT. NO. 5124-0, 5125 SERIES



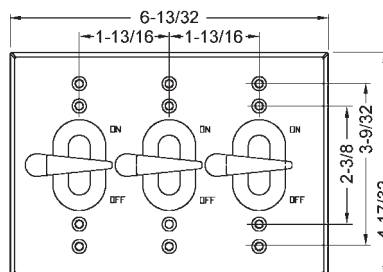
TWO-GANG 5167 SERIES



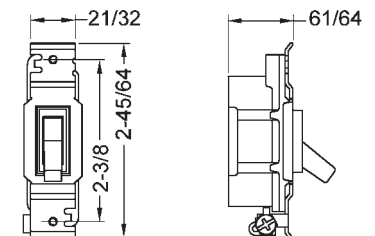
TWO-GANG 5166 SERIES



THREE-GANG CATALOG NO. 5126-0

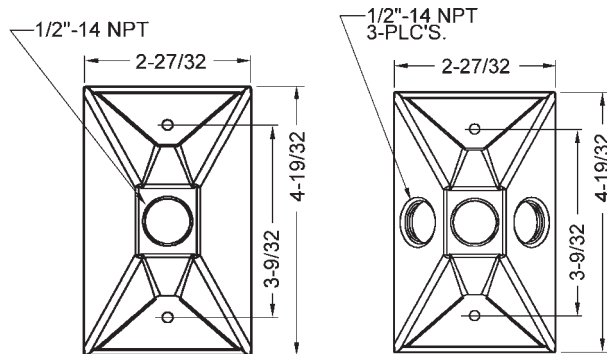


TOGGLE SWITCH CATALOG NOS. 5201-0

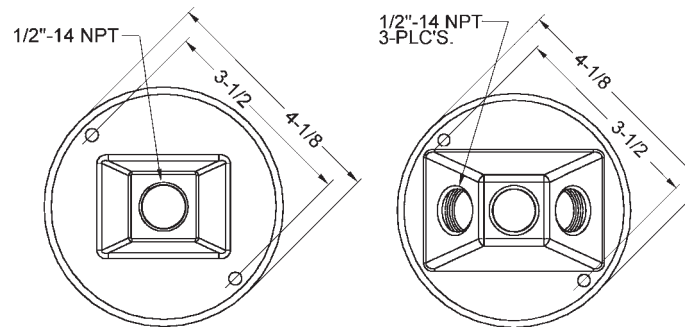


METALLIC LAMPHOLDER COVERS

RECTANGULAR CLUSTER COVERS 5186 SERIES, 5189 SERIES

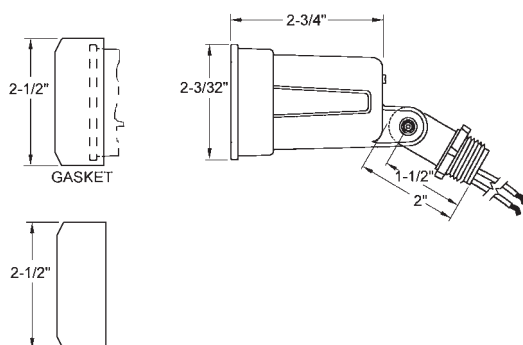


ROUND CLUSTER COVERS 5193 SERIES, 5197 SERIES

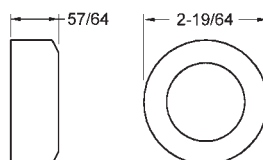


METALLIC LAMPHOLDERS

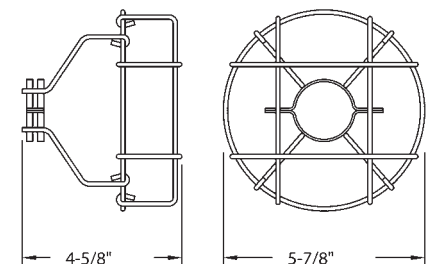
LAMPHOLDERS 5606 SERIES, 5612-0



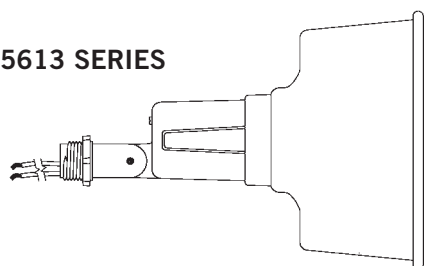
CATALOG NO. 5611-0



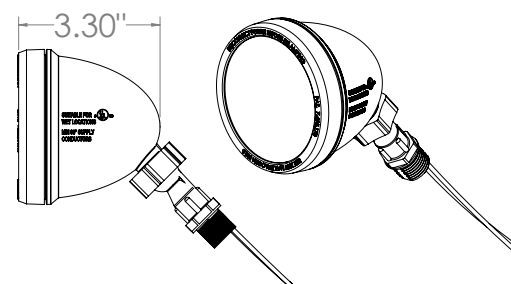
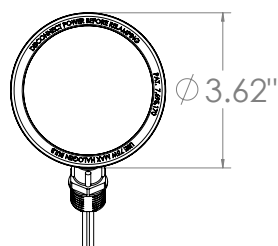
CATALOG NO. 5615-0



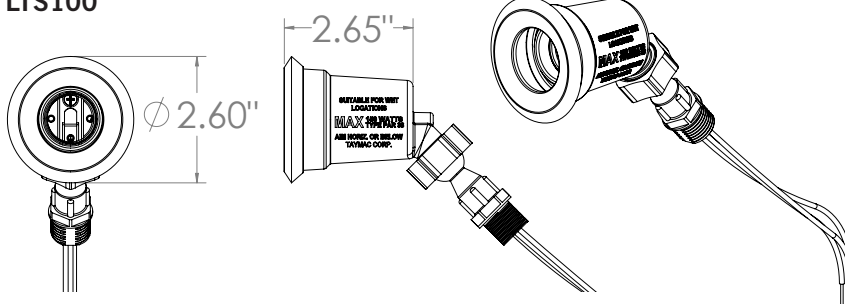
5613 SERIES



LHS100

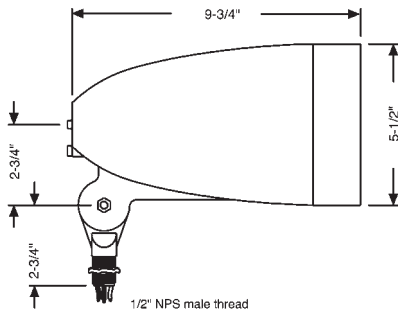


LTS100

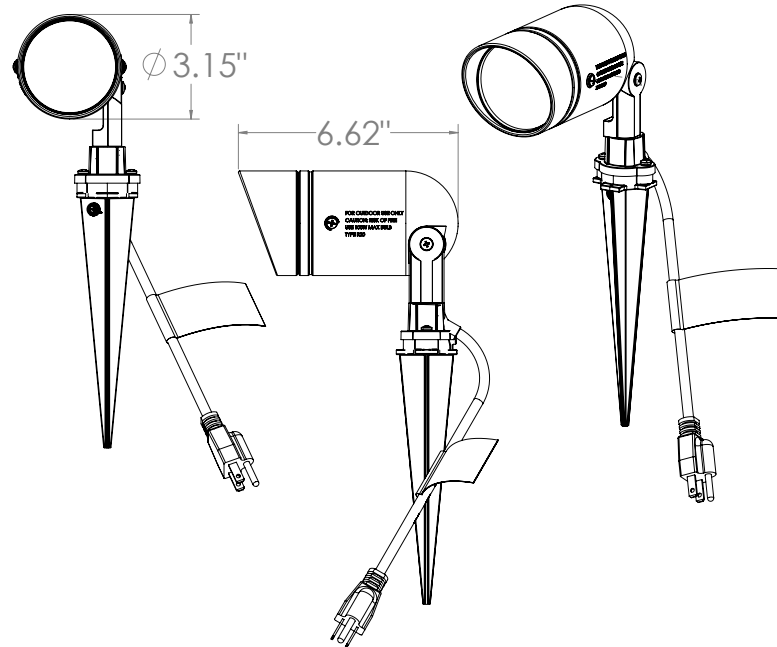


METALLIC BULLET LIGHT AND PORTABLE LAMPHOLDERS

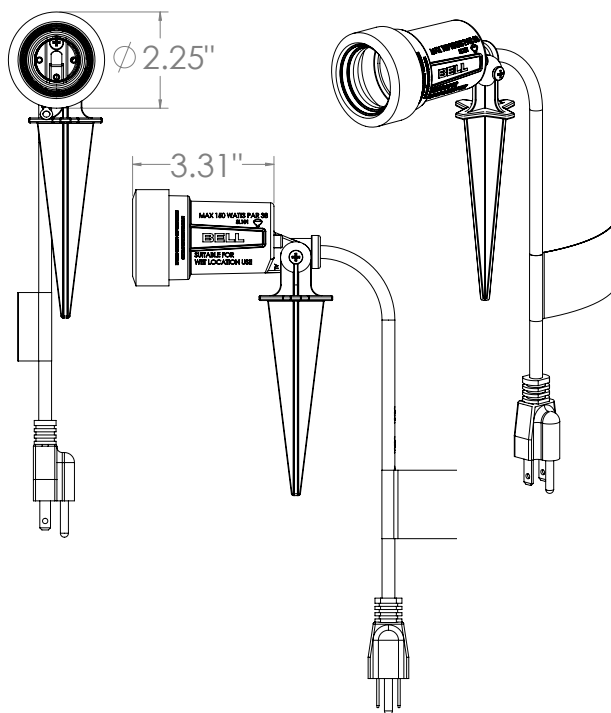
BULLET LAMPHOLDER ASSEMBLY 5820-8



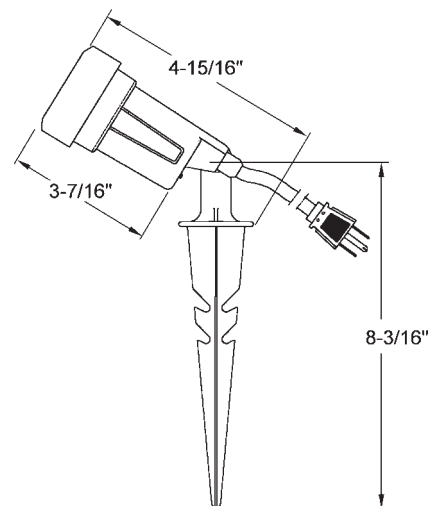
SPLED2Z



SL101B



PORTABLE LAMPHOLDER ASSEMBLY 5792-0

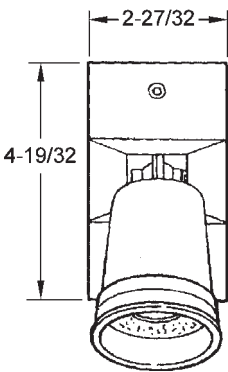


PROOF

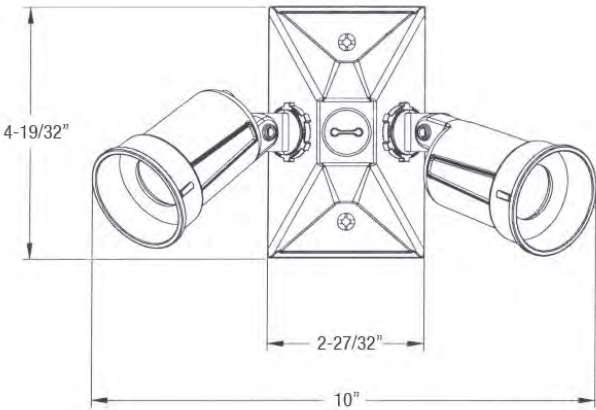
DETAILED DRAWINGS

METALLIC LAMPHOLDER COMBINATIONS AND GARDEN LIGHT

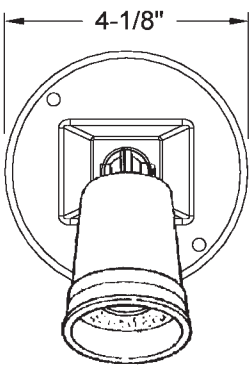
5620 SERIES



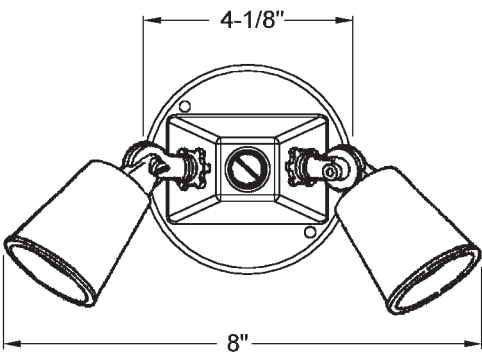
5621 SERIES



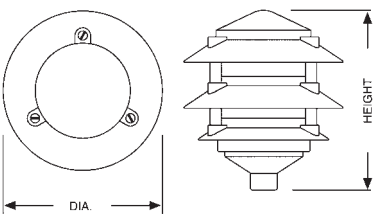
5624 SERIES



5625 SERIES

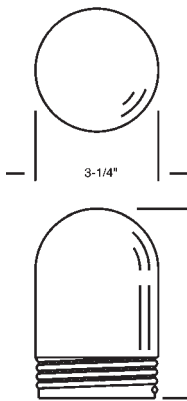


5884-8, 5893-8



CATALOG #	DIA.	HEIGHT
5884-8	6"	7"
5893-8	6"	8-3/4"

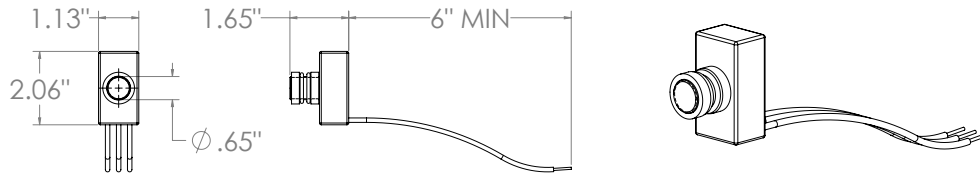
REPLACEMENT GLOBE: 5694-0, 5695-0



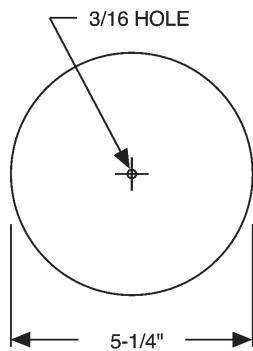
CATALOG #	DIA.	HEIGHT
5694-0	3-1/4"	5"
5695-0	3-1/4"	6-3/4"

ACCESSORIES

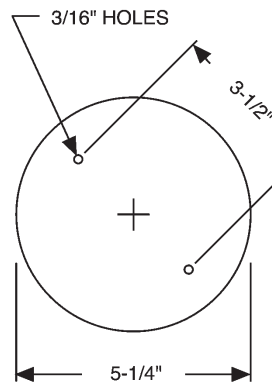
PE100



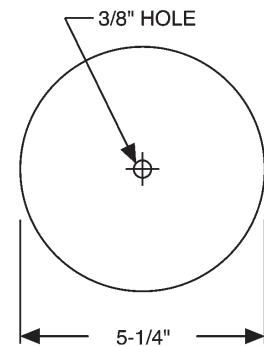
ROUND CLOSURE PLATES CATALOG NO. 5652-1



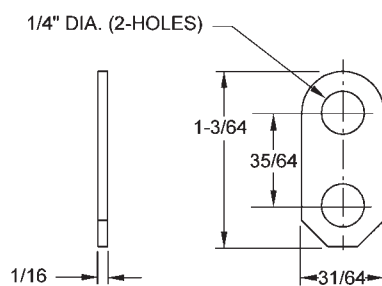
CATALOG NO. 5653-1



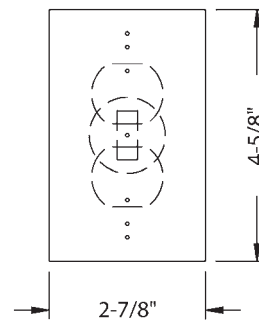
CATALOG NO. 5654-1



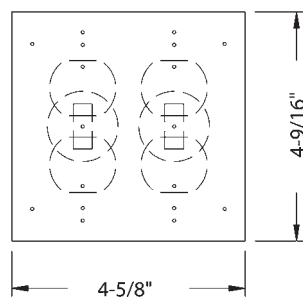
BOX MOUNTING LUG CATALOG NO. 5302-0



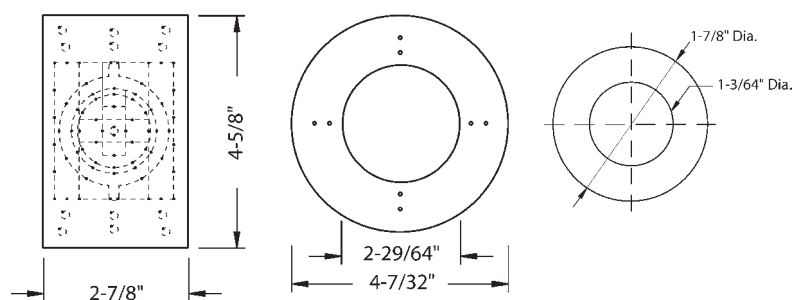
GASKET: CATALOG NO. 5019-0



GASKET: CATALOG NO. 5020-0



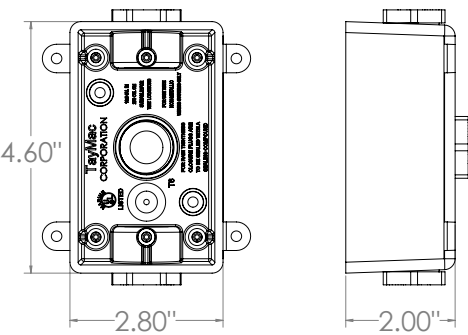
GASKETS: CATALOG NO. 5017-0



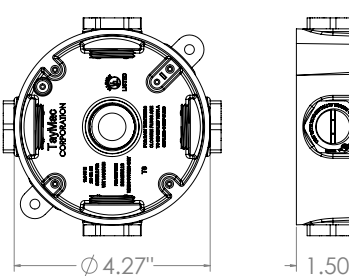


NON-METALLIC BOXES

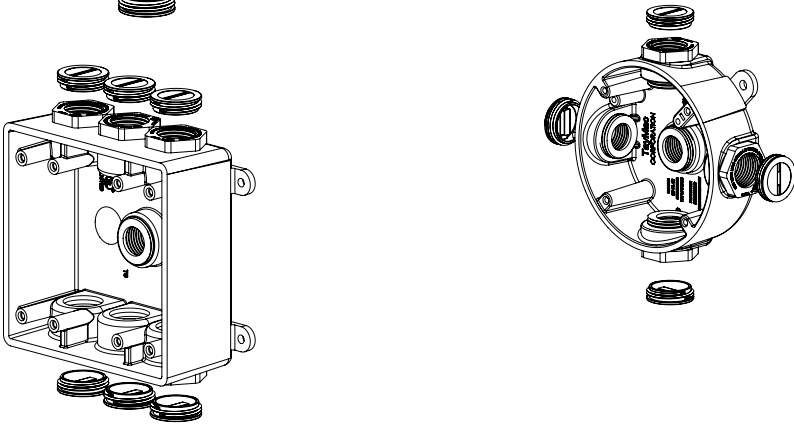
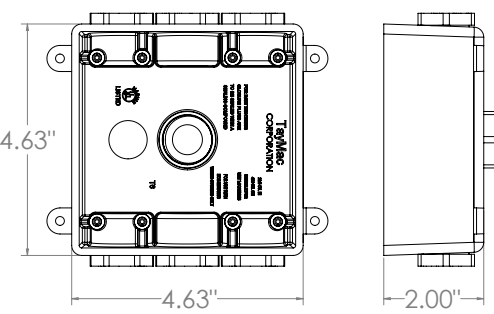
PSB37550



PRB57550

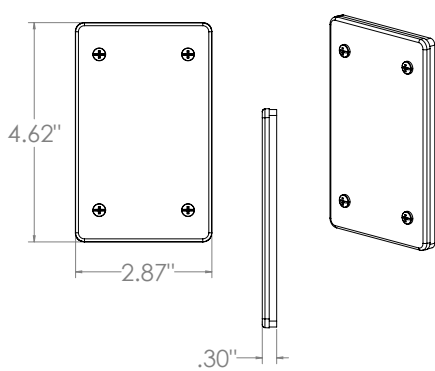


PDB77550G

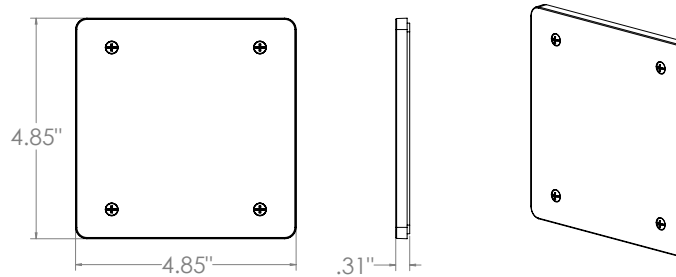


NON-METALLIC COVERS

PBC100

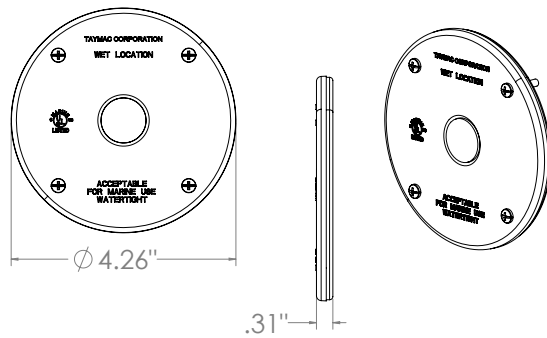


PBC200

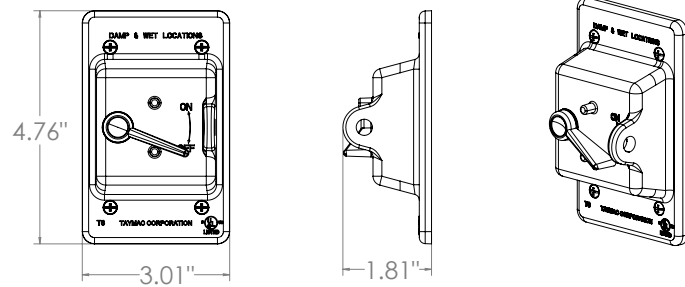


NON-METALLIC COVERS

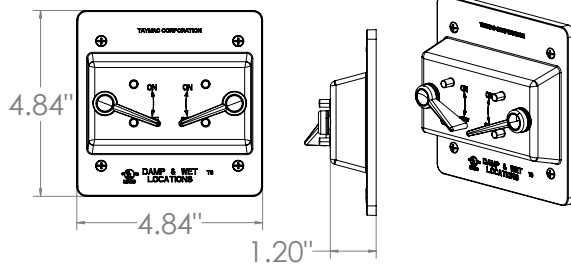
PBC300



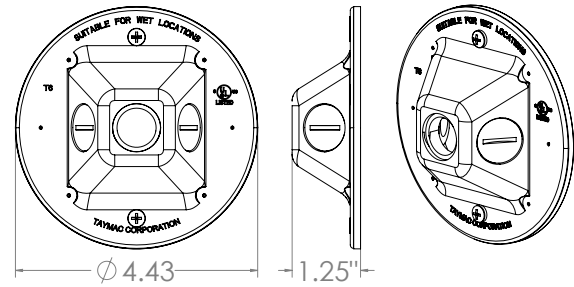
PTC100



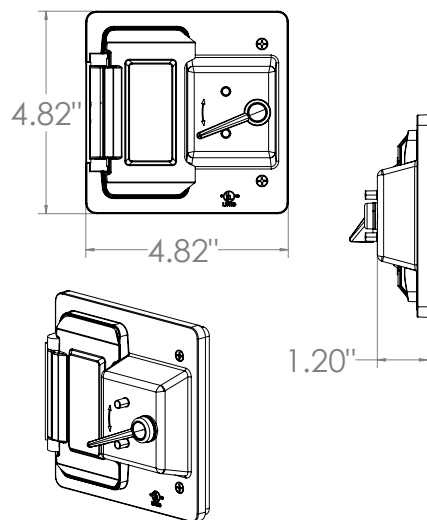
PTC200



PLV330



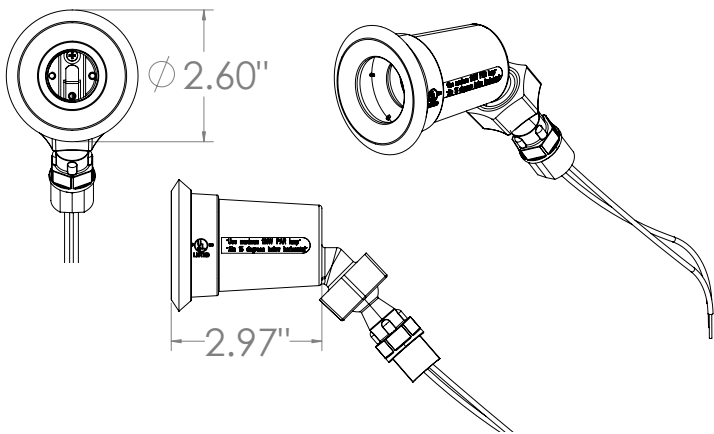
PTC521



PROOF

NON-METALLIC LIGHTING

PLTS100



NON-METALLIC ACCESSORIES

PCP47550

