



2021 FULL-LINE CATALOG

Paslode

GRK
FASTENERS

Tapcon

BACKER-ON.
ROCK-ON.

Ramset

Teks

RED HEAD

EZAnchor



ORGILL



paslode.com



grkfasteners.com



tapcon.com



backeronrockon.com



ramset.com



teksscrews.com



redheadanchoring.com



easyanchors.com

Prepared for: **ORGILL**

MANUFACTURER'S REPRESENTATIVE:

JONES SALES & MARKETING GROUP

P: 803.754.0159 F: 803.691.0250

WWW.JSMGLINK.COM

INFO@JONESSALESANDMARKETING.COM

Table of Contents

SECTION 1: <i>PASLODE® COMPLETE PRODUCT LINE</i>	4-15	SECTION 9: <i>E-Z ANCHOR® MULTI-USE ANCHORS</i>	34
SECTION 2: <i>GRK R4™ MULTI-PURPOSE FRAMING & DECKING SCREWS</i>	19-21	SECTION 10: <i>TAPCON® CONCRETE SCREW ANCHORS</i>	35-37
SECTION 3: <i>RSS™ RUGGED STRUCTURAL SCREWS</i>	22-23	SECTION 11: <i>TAPCON+® CONCRETE SCREW ANCHORS</i> <i>TRUBOLT® CONCRETE WEDGE ANCHORS</i>	38-39
SECTION 4: <i>FIN/TRIM™ TRIM HEAD SCREWS</i>	24-25	SECTION 12: <i>RED HEAD® CONCRETE ANCHORS</i> <i>RED HEAD® A7+ ADHESIVE ANCHORS</i>	40-41
SECTION 5: <i>RT COMPOSITE™ TRIM HEAD SCREWS</i>	26-27	SECTION 13: <i>RAMSET® P.A.T. TOOLS & ACCESSORIES</i>	42-43
SECTION 6: <i>PHEINOX™ STAINLESS STEEL SCREWS</i> - 305 Stainless - 316 Marine Grade Stainless	28-29	SECTION 14: <i>TEKS® METAL FASTENING SCREWS</i>	44-45
SECTION 7: <i>LOW PROFILE CABINET™ SCREWS</i>	30-31	SECTION 15: <i>CEMENT BOARD SCREWS, CBS</i> <i>STAR DRIVE BITS & ACCESSORIES</i>	46-47
SECTION 8: <i>MSS™ METAL SIDING SCREWS</i> <i>TOP STAR™ SHIM SCREWS</i>	32-33	SECTION 16: <i>ASSORTMENTS & DISPLAYS</i>	48-59

ITEMS WITH ORGILL SKUS ARE STOCKED IN ALL ORGILL DISTRIBUTION CENTERS UNLESS NOTED OTHERWISE.

CORDLESS **XP**

POWER

Fuel + Battery System delivers consistent power to drive nails flush, even into engineered lumber.



PERFORMANCE

Proven to withstand wear and tear like no other and drives 9,000 shots per battery charge to keep you productive all day.



LIGHTWEIGHT

At only 7.2 lbs., the lightest cordless framing nailer on the market, even lighter than pneumatics.

FOR FRAMING, TRUSS ATTACHMENT, WALL PANELS, FLOOR JOISTS, DECKING, FENCING & BLOCKING

TOOL-FREE ADJUSTABLE
DEPTH OF DRIVE

MODEL
CFN325XP

PART NUMBER
906300

DESIGNED & ASSEMBLED
IN USA

REAR LOAD MAGAZINE -

Faster nail loading with Bypass Follower
- just load nails and pull

LONGER FAN RUN TIME -

Improved cooling provides
greater productivity

DROP-IN FUEL SYSTEM -

Provides 1,200 nails per fuel cell

2-SIDED RUBBER GRIP -

Added comfort and control with improved
ergonomics and maneuverability

EASY BATTERY REMOVAL



REPUTATION IS EVERYTHING

INNOVATION.

Innovation in the nailer category doesn't just happen. You have to work at it. Paslode has over 80 years of experience, learning and perfecting every step of the way. You could say we invented the nailer. And you would be right. Ever since we introduced the first pneumatic nailer, cordless framing nailer, and Positive Placement metal connector system we've continued to improve our nailers and fasteners to be the best in the business. Today, Paslode's latest innovations continue to help people in the trades get the job done right.

QUALITY.

Paslode is committed to one thing. Excellence. We stand by our products above all else. Every Paslode product is engineered with expertise and battle-tested for real-world toughness before it leaves our factory. Our decades of expertise in tool and nail manufacturing help us deliver products that stand up to the demands of the guys who use them. Each nailer we make has thousands of nails fired through it to test its limits and make sure it performs when our customers need it.

REPUTATION.

Nail by nail. Job by job. Day after day. We build our reputation the same way our customers do—one day at a time through hard work, reliability, and dedication. That's how Paslode became the standard by which other pneumatic and cordless fastening systems are measured. Our products are the go-to tools for professionals for framing, sheathing, trim and finish applications, fencing, floor and roof decking, siding, and insulation.



BETTER THAN
BATTERY ALONE



DID YOU KNOW?

BATTERY ONLY SYSTEMS HAVE HIDDEN SHORTCOMINGS

You often need heavier battery upgrades.

The standard battery that comes with your tool does not achieve 500-800 shots per charge.

They are too heavy.

Power is driven by a mechanical system that adds significant weight to the nailer.

They need to be returned for major repairs but the warranty may leave you hanging.

Complex wiring often experiences catastrophic system failures, which means more time without your nailer and that could mean added expense with limited warranty coverage.

FUEL AND BATTERY WORK TOGETHER TO MAKE YOU MORE PRODUCTIVE

You get combustion power all day long.

You get consistent power to drive into the hardest lumber with no compromises.

It is the lightest cordless nailing system.

The combustion system also means light weight, which makes it easier on your body. Lightweight and power are a combination you can't beat.

It keeps you working.

Fuel + Battery systems have fewer electrical components – and that means less maintenance and tool failure.

Application	Fuel-Powered Cordless Tools				Pneumatic Tools												
	30" Li-Ion Framing CFN325X	16ga Angled Li-Ion Finish IM250ALI	16ga Straight Li-Ion Finish IM250SLi	18ga Brad IM200Li.2, IM200Li	Power Master™ Plus F350-S	Power Master™ Pro F-350P	Power Framer™ PF350-S	Positive Placement® Metal Connector Nailer F250S-PP	Positive Placement® Metal Connector Nailer PF250S-PP	Positive Placement® Metal Connector Nailer F150S-PP	Positive Placement® Metal Connector Nailer F150S-PP	16ga Angled Finish/Trim T250A-F16	16ga Straight Finish/Trim T250S-F16P, T250S-F16	18ga Brad T200-F18P, T200-F18	16ga Wide Crown Stapler WCS200, S200-W16	16ga Standard Crown Stapler SCS200, S200-S16	CapStapler CS150
Framing																	
Exterior Walls	•				•	•	•										
Interior Walls	•				•	•	•										
Rafters	•				•	•	•										
Joists	•				•	•	•										
Metal Hardware								•	•	•	•						
Headers	•				•	•	•										
Blocking	•				•	•	•										
Bridging	•				•	•	•									•	
Floor Decks	•				•	•	•										
Roof Decks	•				•	•	•									•	
Punchout	•				•	•	•										
Assembly/Sheathing																	
Plywood	•				•	•	•								•	•	
Gypsum Wallboard															•		
Soft Wall															•	•	
Polystyrene															•		
Lathing															•	•	
Soffits	•			•												•	
Fascias	•			•												•	
Trim/Finish																	
Bead Paneling		•	•	•								•	•	•			
Baseboards		•	•	•								•	•	•			
Crown Molding		•	•	•								•	•	•			
Cap and Shoe		•	•	•								•	•	•			
Door and Window Jambs		•	•	•								•	•	•			
Door and Window Casings		•	•	•								•	•	•			
Chair Rail Molding		•	•	•								•	•	•			
Roofing																	
Roofing Felt															•		•
Asphalt/Fiberglass Shingles															•		
Cedar Shingles	•				•	•	•										
Siding/Exterior																	
Housewrap															•		•
Wood	•				•	•	•										
Cedar and redwood	•				•	•	•										
Hardboard	•				•	•	•										
Vinyl																▲	
Exterior Fences	•				•	•	•									•	
Recreational Decks	•				•	•	•										
● Tool without shingle guide; ▲ With accessory for vinyl siding																	
Always check with local building codes for fastener compliance																	

CFN325XP Cordless Li-ion Framing Nailer



ORGILL #5378302

15% More Power to drive nails flush
Works in All Seasons down to 14°F
9,000 shots per battery charge

1 YEAR FULL WARRANTY

2 YEAR SERVICE PROMISE



Designed and Assembled in the U.S.A.

Tool Specifications

Model	CFN325XP
Part #	906300 ORGILL #5378302
Weight	7.20lbs w/battery
Nail Capacity	1 strip (48 nails)
Nail Range	2" - 3 1/4"
Nail Diameter	.113 / .120 / .131
Nail Type	30° Paslode RounDrive® Full Head 30° Paslode Clipped Head
Fuel Type	All-Season Fuel (part# 816008)
Nails per Fuel Cell	Approx. 1,200
Battery	Li-ion battery (part# 902654) and charger (part# 902667)
Battery Life	9,000 nails per charge
Warranty	1-year full coverage 5-year limited

Fuel + Nail Combo Packs:

Our industry leading fuel and nails in one convenient package

Note: 1,000 count cartons contain 1 fuel cell. 3,000 count cartons contain 3 fuel cells



*Features **NEW! POWERBOOST** black tip coating for consistent drive performance in LVL!

Power Boost Coating

PRO NAILING SYSTEM



FOR NON-STOP NAILING

Cordless Framing Fuel + Nail Combo Packs						
Part #	Orgill #	Length	Diameter	Shank	Finish	#/Box
650564		2"	0.113	Ring	HDG Plus	1,000
650526	4899175	2 3/8"	0.113	Ring	HDG Plus	1,000
650522	4899217	2 3/8"	0.113	Smooth	Brite	1,000
650523	4899225	2 3/8"	0.113	Ring	Brite	1,000
650565		2 3/8"	0.113	Ring	Brite	3,000
650527	4899183	3"	0.120	Ring	*HDG Plus	1,000
650563		3"	0.120	Smooth	*HDG Plus	1,000
650524	4899209	3"	0.120	Smooth	*Brite	1,000
650631		3"	0.120	Smooth	*Brite	3,000
650525	4899837	3"	0.131	Smooth	*Brite	1,000
650566	4899845	3"	0.131	Smooth	*Brite	3,000
650535	4899233	3 1/4"	0.131	Smooth	*Brite	1,000
650630	4899340*	3 1/4"	0.131	Smooth	*Brite	3,000
650615	4899191	3 1/4"	0.131	Smooth	*HDG Plus	900

*Available in Tifton, Inwood, Hurricane, Killgore, Sikeston

IM250A-Li 16 Gauge Angled Li-ion Finish Nailer



ORGILL #5378310

7.4 V Li-ion battery

Drives up to 12,000 nails per charge

Cordless Convenience and Mobility

Less mess and clutter, no dirty hoses to drag around

Compact

The most compact cordless angled finish nailer available! Superior performance in tight spaces

Tool-Free Depth of Drive

Precise control of nail depth, no tools needed

Lightweight

The lightest cordless angled finish nailer available! Superior comfort and control



Designed and Assembled
in the U.S.A.



Tool Specifications

Model	Cordless 16 Ga Angled Finish Nailer
Part #	902400
Weight	4.5 lbs w/battery
Nail Capacity	100 (2 strips)
Nail Range	1¼" - 2½"
Nail Type	Angled 16 Ga - Smooth, Galvanized
Fuel Type	Finish/Trim Fuel (part# 816007)
Nails per Fuel Cell	Approx. 1,200
Battery	Li-ion battery (part# 902654)
Battery Life	12,000 nails per charge
Warranty	90-day normal wear parts 1-year limited 5-year extended limited

ORGILL #5378310

IM250S-Li 16 Gauge Straight Li-ion Finish Nailer



ORGILL #5378328

7.4 V Li-ion battery

Drives up to 12,000 nails per charge

Compact

The most compact cordless straight finish nailer available! Superior performance in tight spaces

Lightweight

The lightest cordless straight finish nailer available! Superior comfort and control

Open Line of Sight

Allows for accurate nail placement

No-Mar Tip

Protects premium wood surfaces when nailing



Designed and Assembled
in the U.S.A.



Tool Specifications

Model	Cordless 16 Ga Straight Finish Nailer
Part #	916000
Weight	4.6 lbs w/battery
Nail Capacity	100 (2 strips)
Nail Range	1¼" - 2½"
Nail Type	Straight 16 Ga - Smooth, Galvanized
Fuel Type	Finish/Trim Fuel (part# 816007)
Nails per Fuel Cell	Approx. 1,200
Battery	Li-ion battery (part# 902654)
Battery Life	12,000 nails per charge
Warranty	90-day normal wear parts 1-year limited 5-year extended limited

ORGILL #5378328

IM200Li & IM200Li.2 18 Gauge Straight Li-ion Brad Nailers



ORGILL #5378336



ORGILL #5378344

7.4V Li-ion Battery

Drives up to 12,000 nails per charge

Lightweight

The lightest cordless brad nailer available! Less fatigue and better handling

Battery Standby Position

Conserves battery power

Tool-Free Depth of Drive

Precise control of nail depth, no tools needed

No-Mar Tip

Protects premium wood surfaces when nailing

Maneuverable

Superior performance in tight spaces



Designed and Assembled
in the U.S.A.



Tool Specifications

Model	Cordless 18 Ga Brad Nailer	
Part #	918000	918100 Compact Mag
Weight	4.6 lbs w/battery	4.25 lbs w/battery
Nail Capacity	100 (2 strips)	50 (1 strip)
Nail Range	5/8" - 2"	
Nail Type	18 Ga - Smooth, Galvanized	
Fuel Type	Finish/Trim Fuel (part# 816007)	
Nails per Fuel Cell	Approx. 1,200	
Battery	Li-ion battery (part# 902654)	
Battery Life	12,000 nails per charge	
Warranty	90-day normal wear parts 1-year limited 5-year extended limited	

Part #	Orgill #	Product	Description	Associated Product(s)
816008	5378278	All-Season Framing Fuel	1,200 nails; 27-month shelf life	905600 - CF325XP Cordless Framing Nailer 902600 - CF325Li Cordless Framing Nailer
816007	5378286	Finish/Trim Fuel (2-pack)	1,200 nails; 21-month shelf life	902400 - Cordless 16 Ga Angled Li-ion Finish Nailer 916000 - Cordless 16 Ga Straight Li-ion Finish Nailer 918000 - Cordless 18 Ga Li-ion Brad Nailer 900078NT - Cordless 16 Ga Stapler (with below adapter)
902550		Yellow Fuel Adapter		900078NT - Cordless 16 Ga Stapler
902654	5378294	Paslode Li-Ion Battery	Framing: 9,000 nails per charge Finish: 12,000 nails per charge Full charge in 90 minutes	905600 - CF325XP Cordless Framing Nailer 902400 - Cordless 16 Ga Angled Li-ion Finish Nailer 916000 - Cordless 16 Ga Straight Li-ion Finish Nailer 918000 - Cordless 18 Ga Li-ion Brad Nailer
902667	5378351	Paslode Li-Ion Battery Charger	2x faster charge time, 2 minute quick charge drives up to 200 nails	902654 Paslode Li-Ion Battery
219413		Auto Adapter Kit	Charger base and auto adapter cord	All Paslode Li-ion Tools
402500		Paslode Ni-Cd Stick Battery	2 hour charge; 4,000 staples per charge	900078NT - Cordless 16 Ga Stapler
900200	5378369	Paslode Ni-Cd Battery Charger	2 hour charge time	404717 - Oval Battery 402500 - Stick Battery
900507		Auto Adapter Charger	Use with 900200 battery charger	900200 - Paslode Battery Charger
404717	7346257	Ni-Cd Battery	Drives up to 4,000 nails per charge; Recharges within 2 hours	902200 - CF325 Cordless Framing Nailer 900420 - IMCT Cordless Framing Nailer 900600 - IM250A Impulse Cordless 16 Ga Angled Finish Nailer 901000 - Cordless 18 Ga Brad Nailer 902000 - Cordless 16g Ga Straight Finish Nailer
219377		Cordless Li-ion Framing Tune-up Kit		905600 - CF325XP Cordless Framing Nailer 902600 - CF325Li Cordless Framing Nailer
219409		Cordless Li-ion Finish/Trim Tune-up Kit		902400 - IM250A-Li 16 Ga Angled Li-ion Finish Nailer 916000 - IM250S-Li 16 Ga Straight Li-ion Finish Nailer 918000 - IM200Li 18 Ga Straight Li-ion Brad Nailer
219348	8688012	Cordless Tool Cleaner	12oz. Bottle	All Paslode Cordless tools
401482	7346307	Cordless Nailer Lubrication Oil	4oz. bottle	All Paslode fuel-powered cordless nailers
902473		No-Mar Tips	3-pack - Angled	902400 - Cordless 16 Ga Angled Finish Nailer
219236		No-Mar Tips	3-pack - Straight	916000 - Cordless 16 Ga Straight Finish Nailer
901252		No-Mar Work Contact Element	1-pack - Framing	905600 - CF325XP Cordless Framing Nailer

F350-S POWERMASTER™ PLUS 30° PNEUMATIC FRAMING NAILER



ORGILL
#0793547

Proven & Reliable Performance

Consistently delivers and drives nails flush to keep users productive and minimize rework & downtime

Durable

Built to last and requires less maintenance

Compact

Fits between studs, joists, and rafters

Backed with the protection of a one-year full coverage warranty



Designed and Assembled
in the U.S.A.



Tool Specifications

Model	F350-S
Part #	501000
Weight	8.4 lbs
Nail Capacity	84 (2 strips)
Nail Range	2" - 3½"
Nail Diameter	.113 / .120 / .131
Nail Type	30° Paslode RounDrive® Full Head 30° Paslode Clipped Head
Operating Pressure	80-120 psi (5.5-8.3 bar)
Warranty	1-year full 5-year limited

ORGILL #0793547

PF350S POWERFRAMER™ 30° PNEUMATIC FRAMING NAILER



Durable Construction

Requires less maintenance

Powerful

Drives nails flush, even in LVL

Compact Size

Fits between studs

Adjustable Rafter Hook

Moves out of the way when not in use

Soft Grip Handle

For maximum comfort

Designed and Assembled
in the U.S.A.



Tool Specifications

Model	PF350S PowerFramer
Part #	502000
Weight	7.95 lbs
Nail Capacity	84 (2 strips)
Nail Range	2" - 3½"
Nail Diameter	.113 / .120 / .131
Nail Type	30° Paslode RounDrive® Full Head 30° Paslode Clipped Head
Operating Pressure	80-120 psi (5.5-8.3 bar)
Warranty	90-day limited on wear parts 6-month limited on magazine parts 1-year limited on housing and cap

F250S-PP POSITIVE PLACEMENT® 1½" + 2½" METAL CONNECTOR NAILER



ORGILL #2425957*

Hole to Hole Speed

Patented probe quickly locates hardware holes, when engaged, nailer is ready to fire

Reliable

System delivers consistent dependable performance

Powerful

Legendary motor platform consistently drives into the hardest materials, including engineered lumber

Durable

Capable of production use all day, nail lock out prevents blank firing

High Capacity Magazine

Holds up to 2 strips of nails (44 total nails)

Designed and Assembled
in the U.S.A.



Tool Specifications

Model	F250S-PP
Part #	500855
Weight	8.5 lbs
Nail Capacity	44 (2 strips)
Nail Range	1½" + 2½"
Nail Diameter:	.131 / .148 / .162
Nail Type	Positive Placement® Heat Treated Metal Connector Nails - Brite (Smooth) and Mechanically Galvanized
Operating Pressure	80-120 psi (5.5-8.3 bar)
Warranty	90-day limited on wear parts 6-month limited on magazine parts 1-year limited on housing and cap
Dimensions	19.5" L x 5.0" W x 13.88" H

ORGILL #2425957*

*Available in Tifton, Inwood, Hurricane, Kilgore, Sikeston

F150S-PP POSITIVE PLACEMENT® 1½" METAL CONNECTOR NAILER



ORGILL #1645894

Durable

Made for tough jobsite conditions and daily use

Accurate

Probing tip guides nails into hardware holes

Compact

Fits in tight spaces and reduces fatigue

Designed and Assembled
in the U.S.A.



Tool Specifications

Model	F150S-PP
Part #	515850
Weight	6.3 lbs
Nail Capacity	44 (2 strips)
Nail Range	1½"
Nail Diameter:	.131 / .148
Nail Type	Positive Placement® Heat Treated Metal Connector Nails - Brite (Smooth) and Mechanically Galvanized
Operating Pressure	90-120 psi (6.2-8.3 bar)
Warranty	90-day limited on wear parts 6-month limited on magazine parts 1-year limited on housing and cap
Dimensions	17.4" L x 3.7" W x 11.7" H

ORGILL #1645894

F150S-PP POSITIVE PLACEMENT® 1½" METAL CONNECTOR NAILER - NEW in 2020



Fast

Positive Placement® probe for fastest hole to hole speed which provides widest angle of approach

Accurate

Probing tip guides nails into hardware holes

Powerful

Drives up to 1½" x .148 Metal Connector Nails flush even into LVL for ALL DAY PERFORMANCE

Designed and Assembled
in the U.S.A.



Tool Specifications

Model	F150S-PP
Part #	515850
Weight	6.25 lbs
Nail Capacity	29 (1 strips)
Nail Range	1½"
Nail Diameter:	.131 / .148
Nail Type	Positive Placement® Heat Treated Metal Connector Nails - Brite (Smooth) and Mechanically Galvanized
Operating Pressure	90-120 psi (6.2-8.3 bar)
Warranty	90-day limited on wear parts 6-month limited on magazine parts 1-year limited on housing and cap
Dimensions	13" L x 3.7" W x 11.7" H

T250S-F16P 16 GAUGE STRAIGHT PNEUMATIC FINISH NAILER



ORGILL #4899043

Best in Class Ergonomics

Designed with enhanced features to optimize balance, maximize comfort, reduce fatigue, and increase productivity

Reliability & Durability

Proven performance that saves you time and can keep up with you

Low Maintenance

Oil-free design allows for long term, maintenance-free operation which reduces cleanup time and associated costs

Designed and Assembled
in the U.S.A.



Tool Specifications

Model	T250S-F16P
Part #	515500
Weight	3.9 lbs
Nail Capacity	100 (2 strips)
Nail Range	1" - 2½"
Nail Type	Straight 16 Ga Galvanized
Operating Pressure	80-120 psi (5.5-8.3 bar)
Warranty	5-year limited

ORGILL #4899043

T200-F18P 18 GAUGE PNEUMATIC BRAD NAILER



ORGILL #498354

Smaller Nose/Probe

Open line of sight for better accuracy and precision

Nail Lock Out System

Prevents marks on wood

Reversible Belt Hook

Easily reversible, keep both hands free for work positioning

Designed and Assembled
in the U.S.A.



Tool Specifications

Model	T200-F18P
Part #	515600
Weight	2.9 lbs
Nail Capacity	100 (2 strips)
Nail Range	5/8" - 2"
Magazine Angle	Straight Collation
Nail Type	18 Ga Galvanized
Operating Pressure	80-120 psi (5.5-8.3 bar)
Warranty	90-day limited on wear parts, 6-month limited on magazine parts, 1-year limited on housing and cap parts

ORGILL #4898854

CS150 CAPSTAPLER HOUSEWRAP STAPLING SYSTEM



ORGILL #1645910*

Staples & Caps in One Easy Step

Caps protect against tearing and water damage

Consistent Drive Performance

Save time on installing roofing felt and house wrap

Easy Loading

Open design makes loading and reloading a snap

Use with FasCaps Combo Pack

Tool Specifications

Model	CS150
Part #	502575
Weight	4.8 lbs
Staple Capacity	90 Staples
Cap Capacity	240 Caps/Spool
Staple Range	1" - 1½"
Staple Type	18 Ga 3/8" Narrow Crown
Operating Pressure	70-110 psi (4.8-7.6 bar)
Warranty	90-day, 1-year limited

ORGILL #1645910*

*Available in Tifton, Inwood, Hurricane, Killgore, Sikeston

SCS200 16 GAUGE PNEUMATIC STANDARD 1/2" CROWN STAPLER



ORGILL #4899480

Speed

Up to 10 staples per second

Power

Drives flush in all materials

Durable

Heavy duty all metal magazine design



Tool Specifications

Model	SCS200
Part #	515700
Weight	5.6 lbs
Magazine Capacity	Up to 150 staples
Staple Range	¾" - 2"
Staple Type	½" Crown 16 Ga Galvanized
Operating Pressure	80-120 psi (5.5-8.3 bar)
Warranty	1-year full 5-year limited

ORGILL #4899480*

*Available in Tifton, Inwood, Hurricane, Killgore, Sikeston

WCS200 16 GAUGE PNEUMATIC WIDE 15/16" CROWN STAPLER



Speed

Up to 10 staples per second

Power

Drives flush in all materials

Durable

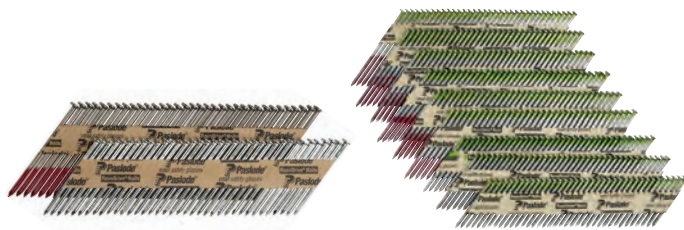
Heavy duty all metal magazine design



Tool Specifications

Model	WCS200
Part #	515800
Weight	5.9 lbs
Magazine Capacity	Up to 150 staples
Staple Range	¾" - 2"
Staple Type	15/16" Crown 16 Ga Galvanized
Operating Pressure	80-120 psi (5.5-8.3 bar)
Warranty	1-year full 5-year limited

FRAMING NAILS 30° PAPER TAPE FRAMING NAILS



RounDrive® Framing Nails

Part #	Orgill #	Length	Diameter	Shank	Finish	#/Box
650272	4899266*	2"	0.113	Smooth	Brite	5,500
650273	4899548*	2"	0.113	Ring	Brite	5,500
405253		2 1/2"	0.131	Smooth	Brite	3,000
650237	4899050	2 3/8"	0.113	Smooth	Brite	5,000
650238	4899068	2 3/8"	0.113	Ring	Brite	5,000
650836	4899092	3"	0.120	Smooth	Brite	2,500
650830	4899076	3"	0.131	Smooth	Brite	2,500
650839	4899118	3 1/4"	0.131	Smooth	Brite	2,500
650381	4899126	2"	0.113	Ring	HDG Plus	2,000
650382	4899282*	2 3/8"	0.113	Smooth	HDG Plus	2,000
650383	4899134	2 3/8"	0.113	Ring	HDG Plus	2,000
650384	4899290*	3"	0.120	Smooth	HDG Plus	2,000
650385	4899142	3"	0.120	Ring	HDG Plus	2,000
650386	4899308*	3"	0.131	Smooth	HDG Plus	2,000
650387	4899159	3"	0.131	Ring	HDG Plus	2,000
650388	4899167	3 1/4"	0.131	Smooth	HDG Plus	2,000
650474	4899324*	3 1/4"	0.131	Ring	HDG Plus	2,000
650476	4899332*	3 1/2"	0.131	Smooth	HDG Plus	2,000

For use with 905600, 511990, 502000, and 515000

Clipped Head Framing Nails

Part #	Orgill #	Length	Diameter	Shank	Finish	#/Box
401548		2 1/4"	0.113	Smooth	Brite (Heat)	4,000
097969		2 3/4"	0.120	Smooth	Brite	3,500
097970		2 3/4"	0.120	Ring	Brite	3,500
097973		3"	0.120	Ring	Brite	3,000
097978		3 1/4"	0.131	Ring	Brite	2,500
097987		3 1/2"	0.131	Smooth	Brite	2,500



Positive Placement® Nail heads marked for easy identification

Positive Placement® Metal Connector Nails

Part #	Orgill #	Length	Diameter	Finish	#/Box
650645	4899522*	1 1/2"	0.131	Brite, Heat Treated	1,000 (4 boxes of 1,000 count/master carton)
650025	4899530*	1 1/2"	0.131	Brite, Heat Treated	4,000
650646	4898862	1 1/2"	0.148	Brite, Heat Treated	1,000 (3 boxes of 1,000 count/master carton)
650026	4899357*	1 1/2"	0.148	Brite, Heat Treated	3,000
650199	4899365*	2 1/2"	0.131	Brite, Heat Treated	2,500
650027	4899373*	2 1/2"	0.148	Brite, Heat Treated	2,500
650028	4899399*	2 1/2"	0.162	Brite, Heat Treated	2,000
650197	4899407*	1 1/2"	0.131	Mechanical Galv, Heat Treated	4,000
650481	4899415*	1 1/2"	0.148	Mechanical Galv, Heat Treated	500 (4 boxes of 500 count/master carton)
650014	4899423*	1 1/2"	0.148	Mechanical Galv, Heat Treated	3,000
650106	4899431*	2 1/2"	0.148	Mechanical Galv, Heat Treated	2,500
650198	4899456*	2 1/2"	0.162	Mechanical Galv, Heat Treated	2,000

For use with 502300 and 515850 (1 1/2")

For use with 500855 and 511800 (1 1/2" + 2 1/2")

PNEUMATIC ACCESSORIES

Part #	Product	Description	Associated Product(s)
403720	Pneumatic Nailer Lubrication Oil	12oz. bottle	All Paslode pneumatic nailers
219228	No-Mar Nose	Protects wood surfaces	501000 - F350-S PowerMaster Plus

*Available in Tifton, Inwood, Hurricane, Killgore, Sikeston

FINISH / TRIM and EXTERIOR NAILS and STAPLES

16 gauge Angled Finish/Trim Nails

Part #	Orgill #	Length	Gauge	Finish	Qty
650230	4898912	1 1/4"	16 ga. Angled	Galvanized	2,000
650231	4898920	1 1/2"	16 ga. Angled	Galvanized	2,000
650046	4899472*	1 3/4"	16 ga. Angled	Galvanized	2,000
650047	4898946	2"	16 ga. Angled	Galvanized	2,000
650232	4898953	2 1/2"	16 ga. Angled	Galvanized	2,000

6 boxes per carton, 12,000 Qty
For use with 902400, 900600 and 500910

16 gauge Straight Finish/Trim Nails

Part #	Orgill #	Length	Gauge	Finish	Qty
650282	4898870	1 1/4"	16 Ga. Straight	Galvanized	2,000
650283	4898888	1 1/2"	16 Ga. Straight	Galvanized	2,000
650284	4899464	1 3/4"	16 Ga. Straight	Galvanized	2,000
650285	4898896	2"	16 Ga. Straight	Galvanized	2,000
650287	4898904	2 1/2"	16 Ga. Straight	Galvanized	2,000

6 boxes per carton, 12,000 Qty
For use with 916000, 515500 and 501680

18 gauge Brad Nails

Part #	Orgill #	Length	Gauge	Finish	Qty
650212	4898961	1"	18 Gauge Brad	Galvanized	2,000
650213	4898979	1 1/4"	18 Gauge Brad	Galvanized	2,000
650214	4899001	1 1/2"	18 Gauge Brad	Galvanized	2,000
650215	4899019	2"	18 Gauge Brad	Galvanized	2,000

6 boxes per carton, 12,000 Qty
For use with 918000, 918100, 515600, and 500959

16 gauge Standard (1/2") Crown Staples

Part #	Orgill #	Length	Wire	Crown	Finish	Qty
OT5240		3/4"	16 Gauge	1/2"	Galvanized	21,000
OT5242		1"	16 Gauge	1/2"	Galvanized	16,500
OT5243		1 1/8"	16 Gauge	1/2"	Galvanized	15,000
OT5238		1 1/4"	16 Gauge	1/2"	Galvanized	13,500
OT2695	5378385*	1 1/2"	16 Gauge	1/2"	Galvanized	10,500
OT2250	5378393*	1 3/4"	16 Gauge	1/2"	Galvanized	9,000
OT2258		2"	16 Gauge	1/2"	Galvanized	7,500

For use with 515700, 900078NT and 501230

16 gauge Wide (15/16") Crown Staples

Part #	Orgill #	Length	Wire	Crown	Finish	Qty
404068		3/4"	16 Gauge	15/16"	Galvanized	9,000
404069		7/8"	16 Gauge	15/16"	Galvanized	9,000
404070		1"	16 Gauge	15/16"	Galvanized	9,000
404071		1 1/4"	16 Gauge	15/16"	Galvanized	9,000
OT2855		1 1/2"	16 Gauge	15/16"	Galvanized	10,500
650098		1 3/4"	16 Gauge	15/16"	Galvanized	9,000
403471		2"	16 Gauge	15/16"	Galvanized	7,500

For use with 515800 and 501265

FasCaps Plastic Caps and Staples

Part #	Orgill #	Length	Wire	Crown	Finish	Qty
650592	4899498	1"	18 Gauge	3/8"	Galvanized	10,080
650597		1 1/2"	18 Gauge	3/8"	Galvanized	8,640

FasCaps are 6 inner boxes per carton
For use with 502575

*Available in Tifton, Inwood, Hurricane, Killgore, Sikeston



tetraGRIP™
DRIVES LIKE A NAIL. HOLDS LIKE A SCREW.™

the **revolution** of sub-floor fastening.

New barb-threaded fastener for subfloors.

**Gets rid of subfloor nail squeaks
so you don't get callbacks.**

That's why Paslode is offering home builders a solution to this noisy, age-old problem –
a new barb-threaded fastener that eliminates subfloor nail squeaks.

Take a closer look at why this new fastening technology works – and how
it can **save you money** and **increase productivity** at the same time.

ORGILL SKU	ITEM #	DESCRIPTION	QTY
1645902	503000	TetraGRIP Subfloor Fastening Nailer	EA
4899241	650605	TetraGRIP Subfloor Fasteners 2-3/8"	2,100



Home Innovation
LAB TESTED™

No Nail Squeaks
(Formerly NAHB Research Center Tested)



tetraGRIP™
DRIVES LIKE A NAIL. HOLDS LIKE A SCREW.™



Four Good Reasons

If you value construction quality, customer satisfaction – and profits – you'll make the new Paslode TetraGRIP Subfloor Fastener standard issue on your jobsites...

- **Proven to eliminate subfloor nail squeaks**
- **Reduces costs due to warranty repairs**
- **Increases productivity on the jobsite**
- **Raises homeowner satisfaction**



Home Innovation
LAB TESTED™

No Nail Squeaks
(Formerly NAHB Research Center Tested)

Holding Power

The new Paslode Sub-Floor Fastening System drives as fast as a nail and has the holding power of a screw.* Fast work, sturdy joints – and peace and quiet.

Why It Works Better

Manufactured with patented ITW WERC's technology and a patent-pending barb-threaded design, the Paslode TetraGRIP fastener rotates as it drives to bond with the wood fibers. Here's the technology behind this revolutionary squeak-stopping fastener:

- **Rotation Without Destruction**
The optimized barbed helix creates high rotational forces and minimal friction.
- **Strong Non-Destructive Wood Interaction**
Efficient rotation eliminates wood destruction common in ring shank nails.
- **Superior Withdrawal Resistance**
The barbed helix-to-wood engagement creates a high load capacity.

Paslode Subfloor Fastening System

The new Paslode TetraGRIP subfloor fastener is used with the new subfloor air nailer (PF237C) to get maximum performance combined with superior productivity.

ICC-ES recognized, ESR-3071



- Made in U.S.A.
- Engineered Construction Nails, ASTM F1667
- ICC-ES recognized

Paslode is a registered trademark of Illinois Tool Works, Inc. TetraGRIP, DRIVES LIKE A NAIL, HOLDS LIKE A SCREW, WERCs and the WERCs symbol are trademarks of Illinois Tool Works, Inc. Covered by the following patents: 6956181, 6604665, 7819614, 8511961

*As compared to #8, 2" standard screw.

HIRL testing: See www.HomeInnovation.com/Tested for details.

DUO-FAST[®]

DF225C

DRIVES 1-1/2" TO 2-1/4" LENGTHS

ADJUSTABLE EXHAUST

360° ADJUSTABLE EXHAUST CAN BE DIRECTED AWAY FROM THE USER

SWITCHABLE TRIGGER

FOR EASY TRANSITION FROM BUMP TO SEQUENTIAL DRIVING

TOOL-FREE DEPTH OF DRIVE

DRIVES NAILS FLUSH EVERYTIME... SAVE TIME AND MONEY BY NOT HAVING TO GO BACK AND CAULK

EASY LOAD MAGAZINE

NO POST/OPENS FROM SIDE HELPS PREVENT JAMS

NO MAR TIP

WON'T DAMAGE WORK SURFACE

FASTENER SPECIFICATIONS

0° PLASTIC COIL:	COIL
NAIL LENGTHS:	1-1/2" to 2-1/4"
SHANK DIAMETER:	0.80"-1.05"
SHANK STYLE:	SMOOTH, RING, SCREW SHANK
NAILS PER COIL:	300

TOOL SPECIFICATIONS

MODEL NUMBER:	DF225C
PART NUMBER:	502950
WEIGHT:	4.5 LBS.
HEIGHT:	12-5/8"
LENGTH:	12-1/2"
WIDTH:	5-3/4"
MAG TYPE:	COIL
OPERATING PRESSURE P.S.I. BAR:	80-120

REVERSIBLE BELT HOOK

CLIPS NAILER SECURELY TO YOUR TOOL BELT

COMFORT MOLDED GRIP

NON-SLIP CUSTOM MOLDED HANDLE

HIGH LOAD CAPACITY

33% MORE NAILS- 300 NAILS PER COIL



SIDING



FENCING



NO FLAGGING, STING OR DEBRIS

0° PLASTIC COLLATED

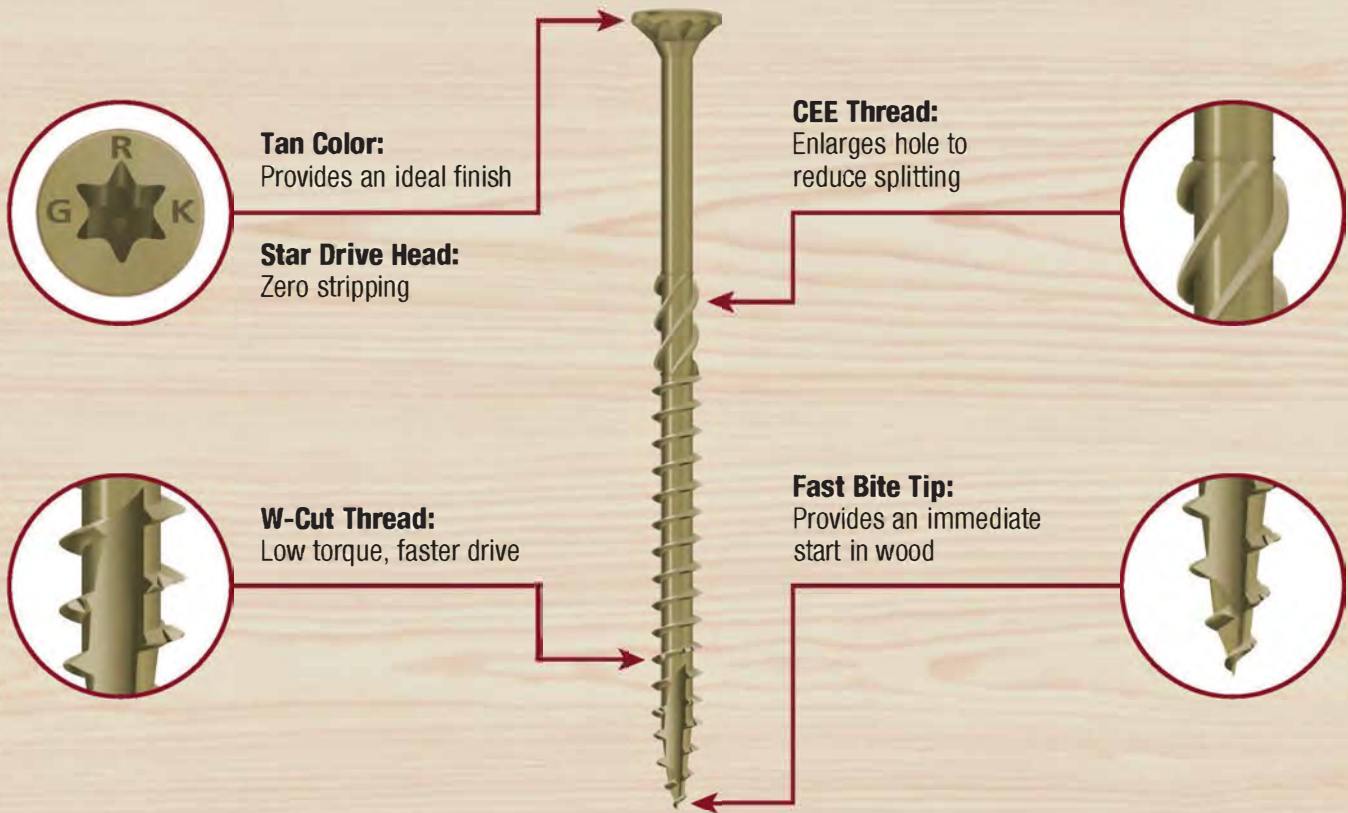
ITEM #	ORGILL SKU	DESCRIPTION	PACK QTY
DUO-FAST PNEUMATIC COIL SIDING NAILING			
502950	1645969	DF225C PNEUMATIC COIL SIDING NAILER	EA
650392	4899860	NAIL SIDING RING 1.875X0.086IN HDG	3,600
469346	3240033	NAIL SIDING RING 1.875X0.091IN GALV	9,000
650394	4899878	NAIL SIDING RING 2.25X0.092IN HDG	3,600
465971	3240041	NAIL SIDING SCRW 1.875X0.099IN ALUM	9,000
504605	4899894	NAIL SIDING RING 2.25X0.099IN GALV	7,200



ITEM #	ORGILL SKU	DESCRIPTION	PACK QTY
DUO-FAST STAPLING			
1011916	2816593	MANUAL COMPRESSION STAPLER 1/2" CROWN	EA
1013292	2816528	MANUAL HAMMER STAPLE TACKER 1/2" CROWN	EA
1015277	2816585	STAPLE CROWN FINISH 5/16X1/2IN	5,000
1015278	2816601	STAPLE CROWN FINISH 3/8X1/2IN	5,000



Deck Elite – Fast Drive, Ideal Finish



GRK Deck Elite Screws are designed for use in wood deck boards

- Provides a quick drive and clean finish in wood decking top boards
- Corrosion resistance guaranteed
 - Corrosion resistant coating:
 - Lifetime guarantee against rust
 - Resists rust and keeps decks looking like new
- Package quantities cover up to 100 or 500 square foot decks*

*Coverage based on 16" spacing and may vary based on deck configuration

GRK Fasteners, a division of Illinois Tool Works
155 Harlem Avenue, Building N3E, Glenview, IL 60025

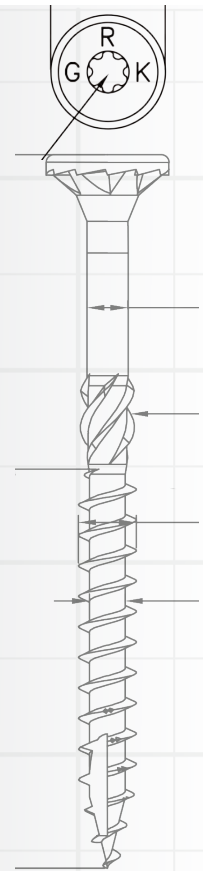
ITEM #	ORGILL SKU	SIZE	PACK QTY
10802	2816510	#8 x 2"	700
10903	2816502	#9 x 3"	350
19158	4052551	#9 x 1-5/8"	850
19212	4052585	#9 x 2-1/2"	400
20903	4052569	#9 x 3"	1050
29212	1364546	#9x2-1/2"	1100

GRK's R4™ self-countersinking screw has a patented underhead with saw-blade like cutting teeth and six self-contained cutting pockets. Together they act similar to a circular saw-blade, transporting the drill dust away from the edge of the screw hole while cutting a perfectly clean hole into even the most brittle materials without cracking any surface treatment.

This design enhances the R4™'s versatility by allowing the fastener to countersink into even the hardest woods. The head of the screw closes the hole off with precision, leaving no damaged fibers around the head.

R4™ screws 3-1/8" and longer have a four threaded CEE Thread. This enlarges the screw hole for the non-threaded portion of the fastener, allowing the wood to settle easily. It increases the screw's drawing strength and reduces the friction on the screw shank that lowers the driving torque.

GRK
FASTENERS™



R4™ MULTI-PURPOSE FRAMING & DECKING SCREWS

Faster Drive for Improved Productivity



- **Fast Bite Tip:** Eliminates pre-drilling and provides a fast start for one-step installation.
- **W-Cut™:** Low torque, faster drive.
- **Precision Fit:** Reduces wobble between R4 screws and GRK bits for improved productivity.
- **Star Drive:** Zero stripping, with 6 points of contact.
- **Optimized Thread Length:** Improves clamping force for increased drawing power.
- **CEE Thread:** Enlarges hole to reduce splitting.
- **Cutting Teeth:** Cuts wood fiber & provides flush seating.
- **GRK Head Markings:** Easy identification of genuine GRK screws.
- **ESR-3201 Approved** for structural applications.
- **Climatek™ Coating is AC257** code approved for use in treated lumber.
- For interior / exterior use in: wood, plastic, cement fiber board, particle board, sheet metal, wood decking, and melamine.
- Also available in **PHEINOX™** 305 and 316 grade Stainless Steel.



T-15



T-15



T-25



T-25



T-25

U.S. (Std.) Size (Dia. x Length)	Bulk Part No.	ORGILL SKU	Bulk Box Qty.	Pro-Pak Part No.	ORGILL SKU	Pro-Pak Pail Qty.	Handy-Pak Part No.	ORGILL SKU	Handy-Pak Pack Qty.
#6 x 1-1/4"	00051†		13,000						
#8 x 1-1/4"				01069†	7214307 ⁵	1,300	96080†	5378419	110
#8 x 1-1/2"	00073†		6,500	01073†	7214315 ⁵	1,000	96085†	5378427	110
#8 x 1-3/4"				01075†	7214299 ⁵	925	02075†	3756954	100
#8 x 2"	00077		4,500	01077	7214323 ⁵	850	02077	3756988	100
#8 x 2-1/2"	00079		3,500	01079	7214331 ⁵	650	02079	3756996	100
#9 x 1-1/4"	00091†		8,000						
#9 x 1-1/2"	00095†	5378203 ¹	5,200	01095†	7342868 ²	820	02095†	3757044 ²	100
#9 x 1-3/4"	00097†		4,500						
#9 x 2"	00099	5377973	3,700	01099	7214182	690	103099	2816395	110
#9 x 2-1/2"	00101	5377999 ⁶	2,900	01101	7214240	575	103101	2816403	100
#9 x 2-3/4"	00103		2,000	01103	7232960 ⁴	480	02103	3757002 ⁴	100
#9 x 3-1/8"	00105	5378039	1,900	01105	7214257	425	103105	2816411	80
#10 x 2"	00131		3,200						
#10 x 2-1/2"	00133		2,500	01133	7214190	470	103133	2816429	80
#10 x 2-3/4"	00135		2,000						
#10 x 3-1/8"	00137	5378047	1,500	01137	7214208	350	103137	2816437	70
#10 x 3-1/2"	00139	5377981	1,200	01139	7214216	300	02139	3756905	50
#10 x 4"	00141	5318013	1,000	01141	7214232	270	103141	2816445	50
#10 x 4-3/4"	00143	5377957 ³	800	01143	7232978 ⁴	230	02143	3756798 ³	50
#12/14 x 5-5/8"	00173	5377965 ³	600				96089	5378211	50
#12/14 x 6-3/8"	00177		1,000				02177	3756947	50
#12/14 x 8"	00181		500				02181	3756848 ³	50

R4™ CONTRACTOR XL BUCKETS			
U.S. (std.)	Part No.	ORGILL SKU	Qty.
#9 x 2"	120990	5149919	990
#9 x 2-1/2"	121010	5143327	900
#9 x 3-1/8"	121050	5149935	720
#10 x 3-1/8"	95200	5378229	630
#10 x 4"	121410	5149943	450

¹Available in Sikeston²Available in Hurricane³Available in Inwood, Hurricane⁴Available in Hurricane, Sikeston⁵Available in Tifton, Inwood, Hurricane, Kilgore, Sikeston⁶Available in Tifton, Inwood, Hurricane, Kilgore, Post Falls

Some sizes available in **PHEINOX™** hardened Stainless Steel; refer to Section 5. 2" bit included in Pro-Paks.
 1" bit w/Handy-Paks. *Does not come with the Zip-Tip™ feature. †Does not have the added CEE-THREAD™ feature.
NOTE: Pro-Paks need to be ordered in multiples of two.

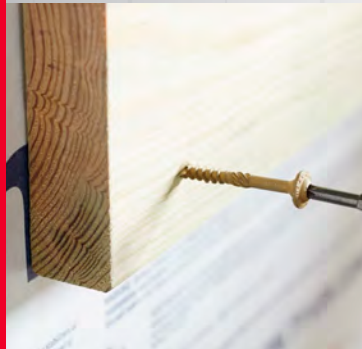
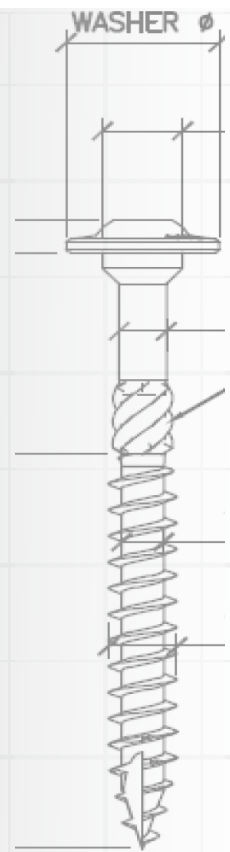
GRK's RSS™ screw is made of specially hardened steel to provide you with high tensile, torque, and shear strength. The sharp threads and points bite instantly into the material (including hardwood), reducing the splitting effect due to smaller shanks.

RSS™ screws that are 3-1/8" and longer have CEE Threads which enlarge the screw hole for the non-threaded portion of the fastener, allowing the wood to settle easily and increases the screw's drawing strength. The CEE Thread also reduces the friction on the screw shank which can result in lowering the driving torque and the likelihood of splitting the wood. This is why the RSS™ screw is an efficient lag screw alternative.

Our round head with built-in shield (washer type head) has no sharp edges like conventional lag screws. The added shoulder (nominal diameter) underneath the washer has the ability to center the RSS™ screw in pre-drilled hardware like hinges and connector plates.

RSS™ JTS - Used for joists and trusses

GRK
FASTENERS™



RSS™ RUGGED STRUCTURAL SCREWS

Easy to Install Lag Alternative



AC257 Treated
Lumber Approved



- **Fast Bite Tip:** Provides an immediate start in wood.
 - *5/16" Diameter Only
- **Zip-Tip™:** Eliminates Pre-drilling.
- **W-Cut™:** Low torque, faster drive.
- **Precision Fit:** Reduces wobble between RSS screws and GRK bits for improved productivity.
 - *5/16" Diameter Only
- **Star Drive:** Zero Stripping, with 6 points of contact.
- **CEE Thread:** Enlarges hole to reduce splitting.
- **Washer Head:** For immense holding power.
- **ESR-2442 Approved** for structural application.
- **Climatek™ Coating is AC257** code approved for use in treated lumber.
- For interior / exterior use in: carrying beams, ledger boards, stair rails, deck posts, playground equipment, and other professional applications.
- Also available in **PHEINOX™** 305 and 316 grade Stainless Steel.



T-25



T-25



T-30



T-40



T-25

U.S. (Std.) Size (Dia. x Length)	Bulk Part. No.	ORGILL SKU	Bulk Box Qty	Pro-Pak Part No.	ORGILL SKU	Pro-Pak Pail Qty.	Handy-Pak Part No.	ORGILL SKU	Handy-Pak Pack Qty.
#10 x 2-1/2"	10133†		1000				12133†	5149604	50
#10 x 3-1/8"	10137	2816296	800	11137	151217	236	12137	5149646	50
1/4" x 1-1/2"	10151*†		1000				12151*†	5149570	50
1/4" x 2"	10155*†		800				12155*†	5149810 ²	50
1/4" x 2-1/2"	10157†		700						
1/4" x 3-1/8"	10161		500				12161	5149893 ²	50
5/16" x 2-1/2"	10217†	2816338	600				12217†	5149547	100
5/16" x 2-3/4"	10219†		500				12219†	5149554 ¹	100
5/16" x 3-1/8"	10221	2816247 ¹	500				12221	5149596	100
5/16" x 3-1/2"	10223	2816304	500				12223	5149711	100
5/16" x 4"	10225	2816346	400				12225	5149612	100
5/16" x 5-1/8"	10231	2816312 ³	300				12231	5149620	50
5/16" x 6"	10235	2816320	300				12235	5149638	50
3/8" x 3-1/8"	10273		400						
3/8" x 4"	10275		400				12275		50
3/8" x 6"	10281	2816353	300				12281		50
3/8" x 7-1/4"	10285		200				12285	5149562 ¹	50
3/8" x 8"	10287	2816254 ¹	300				12287	5149653	50
3/8" x 10"	10293		300				12293	5149661	50
3/8" x 12"	10299		300				12299	5149679	50
3/8" x 14-1/8"							12307	7373566	50
3/8" x 16"	10311		100				12311	2807758	50

RSS™ JTS - JOIST AND TRUSS SCREW	Bulk Part. No.	ORGILL SKU	Bulk Box Qty	Pro-Pak Part No.	ORGILL SKU	Pro-Pak Pail Qty.	Handy-Pak Part No.	ORGILL SKU	Handy-Pak Pack Qty.
1/4" X 5"							93735		50
1/4" X 6-3/4"	91743		300				93743		50

RSS™ MINI HANDY-PAK			
U.S. (std.)	Pt. No.	ORGILL SKU	Qty
5/16" x 3-1/8"	14221	5149695	25
5/16" x 4"	14225	5149695	25
5/16" x 5-1/8"	14231	5149836	20
5/16" x 6"	14235	5149687	20

RSS™ INDIVIDUALLY TAGGED			
U.S. (std.)	Pt. No.	ORGILL SKU	Qty/Ctn
5/16" x 3-1/8"	96001	5378054	1/50
5/16" x 4"	96005	5378195	1/50
5/16" x 5-1/8"	96010	5378062	1/50
5/16" x 6"	96015	5378070	1/40
3/8" x 8"	96020	5378088	1/25
3/8" x 10"	96025	5378104	1/25
3/8" x 12"	96030	5378096	1/20

Some sizes available in **PHEINOX™** hardened Stainless Steel; refer to Section 5.

NOTE: Pro-Paks need to be ordered in multiples of two. *Does not come with the Zip-Tip™ feature.

†Does not have the added CEE-THREAD™ feature. 2" bit included in Pro-Paks. 1" bit with Handy-Paks.

¹Available in Inwood, Hurricane

²Available in Hurricane, Sikeston

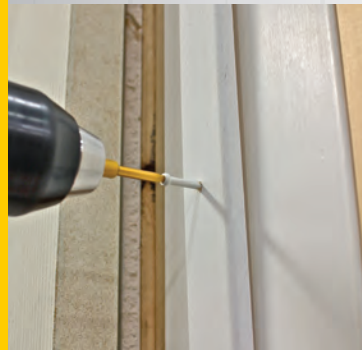
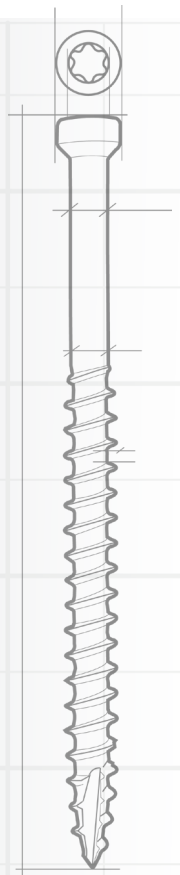
³Available in Tifton, Inwood, Hurricane, Kilgore, Sikeston

GRK's Trim™ Head screws are an excellent choice for most fine carpentry applications, as well as window extension jambs, joining cabinets, and more. Our Trim™ Head screws have the smallest screw head available with screw lengths from 1-1/4" (30 mm) to 5" (125 mm).

Most material splitting is prevented because of the Trim™ Head screw's exceptionally small head and the W-Cut thread design.

Fin/Trim™ screws are also available in white finish to blend in with white wooden trim boards.

GRK
FASTENERS™






FIN/TRIM™ FINISHING TRIM HEAD SCREWS

Install Right the First Time



- **Recessed Star Drive:** Zero Stripping, with 6 points of contact.
- **Trim Head:** For a clean finished look.
- **W-Cut™:** Low torque, faster drive.
- **Zip-Tip™:** No pre-drilling, faster penetration.
- **ESR-3201 Approved** for structural application.
- **Case Hardened Steel:** For high tensile, torque, and shear strength.
- **Climatek™ Coating is AC257** code approved for use in treated lumber.
- For interior / exterior use.
- Available in **Climatek™** or white finish.
- Also available in **PHEINOX™** 305 and 316 grade Stainless Steel.

	U.S. (Std.) Size (Dia. x Length)	Bulk Part No.	ORGILL SKU	Bulk Box Qty.	Pro-Pak Part No.	ORGILL SKU	Pro-Pak Pail Qty.	Handy-Pak Part No.	ORGILL SKU	Handy-Pak Pack Qty.
 T-10	# 8 x 1-1/4"	15724		6,500	116724	4052528	600	96055	4052296	100
	#8 x 1-1/2"	15728		4,500	116728	4052536	510	119724	4052320	100
	#8 x 2"	15730		3,500	16730	3661949	605	119728	4052338	100
	#8 x 2-1/2"							119730	4052346	100
	#8 x 2-3/4"							17732	4052262 ¹	100
	#8 x 3-1/8"	15734		2500	115734	4052544	300	119734	4052353	100
 T-15	#9 x 4"	15760		1,000				117760	4052361	50
	#9 x 5"	15766		800				117766	4052379	50
WHITE FIN / TRIM™										
 T-10	# 8 x 2"				16828		605	96060	4052270 ¹	100
	#8 x 2-1/2"				16830	3661972 ²	505	96065	4052312	100

Some sizes available in **PHEINOX™** hardened Stainless Steel; refer to Section 5
NOTE: Pro-Paks need to be ordered in multiples of two. 2" bit included in Pro-Paks.
 1" bit with Handy-Paks.

¹Available in Inwood, Hurricane, Sikeston
²Available in Tifton, Inwood, Hurricane, Kilgore, Sikeston

**Excellent for all of
 your trimwork and fine
 carpentry finishing.**

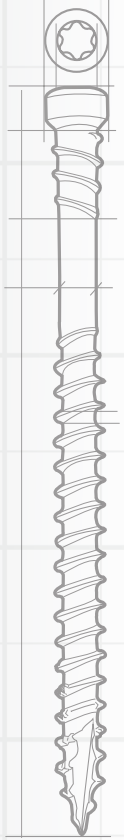


GRK has modified its innovative FIN/Trim™ Head screw to include reverse threading under the head of the fastener. This technology makes the RT Composite™ Trim Screw ideal for use in composite and cellular PVC trim.

Based on extensive tests, GRK has found that the reverse thread helps the screw head disappear beneath the surface of the classic wood composite material, reducing or eliminating the dimple that sometimes appears when using the FIN/Trim™ screw.

The reverse thread feature is available in RT Composite™ screws from 2" to 3-1/8" in length in both regular Climatek™ coating and in white Climatek™ coated finish to blend in with popular white exterior composite and cellular PVC trim.

GRK
FASTENERS™



RT COMPOSITE™ EXTERIOR TRIM SCREWS

Install Right the First Time

- **Recessed Star Drive:** Zero Stripping, with 6 points of contact.
- **Reverse Threads** eliminate mushrooming.
- **Trim Head:** for a clean finished look.
- **W-Cut™:** Low torque, faster drive.
- **Zip-Tip™:** No pre-drilling, faster penetration.
- **Case Hardened Steel:** For high tensile, torque, and shear strength.
- **Climatek™ Coating is AC257** code approved for use in treated lumber.
- For interior / exterior use in; exterior PVC trim (Azek,™ Kleeer,™ Koma™), no pre-drilling is necessary. Climatek™ coated screws work well with CAMO system.
- Available in **Climatek™** or white Climatek™ coated finish.
- Also available in **PHEINOX™** 305 and 316 grade Stainless Steel.



**AC257 Treated
Lumber Approved**



T-10



T-15



T-10

U.S. (Std.) Size (Dia. x Length)	Bulk Part No.	ORGILL SKU	Bulk Box Qty.	Pro-Pak Part No.	ORGILL SKU	Pro-Pak Pail Qty.	Handy-Pak Part No.	ORGILL SKU	Handy-Pak Pack Qty.
# 8 x 2"				16077	3661907 ¹	725	119077	4052387	100
#8 x 2-1/2"	15079		3,500	16083	3662020	514	119083	4052288 ¹	100
#8 x 3-1/8"	15083		2,500						100
#9 x 2-1/2"	15101	2533701 ²	2,900	16101	3662046	408			
#9 x 3-1/8"	15105	2533719 ²	1,900	16105	3661923 ¹	348			
WHITE RT COMPOSITE™									
#8 x 2"				16628		605	17628	4052395	100
#8 x 2-1/2"				16630	3662079	505	96075	4052429	100
#8 x 2-3/4"							17632	4052403	100
#8 x 3-1/8"							17634	4052411 ²	100

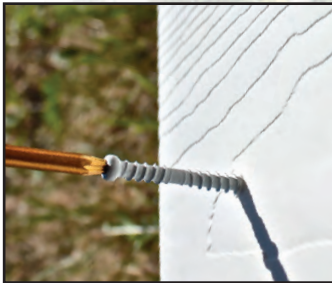
Some sizes available in **PHEINOX™** hardened Stainless Steel; refer to Section 5.

NOTE: Pro-Paks need to be ordered in multiples of two. 2" bit included in Pro-Paks. 1" bit with Handy-Paks.

¹Available in Inwood, Hurricane

²Available in Tifton, Inwood, Hurricane, Kilgore, Sikeston

**Supreme Drawing Power
is perfect for trimwork and
deck construction.**





305 STAINLESS STEEL
Corrosion Resistance for Harsh Environments



316 STAINLESS STEEL
Marine Grade Protection for Superior Corrosion Resistance

PHEINOX™ STAINLESS STEEL SCREWS



PHEINOX™ 305 Stainless Steel screws are corrosion and stain resistant fasteners designed to withstand wet environments. PHEINOX™ 316 Stainless Steel screws are designed for coastal applications. GRK's patented R4, RSS, FIN/TRIM and RT composite screws are available in PHEINOX™ stainless steel.

GRK recommends PHEINOX™ 305 stainless steel screws for applications that require superior corrosion resistance in wet environments such as decks, boardwalks, pools, and hot tubs. PHEINOX™ 305 stainless is also recommended for use with cedar, red-wood, and various other wood substrates that have higher acid content as well as for composite deck boards. PHEINOX™ 305 stainless steel screws are recommended for applications located more than 1 mile from the coast.

PHEINOX™ 316 stainless steel screws are recommended for applications exposed to salt water or located within 1 mile of the salt water shoreline.

The Zip-Tip™ feature of the screw allows a faster start and eliminates the need for pre-drilling. Hardened stainless steel provides superior strength and unmatched performance by maximizing torque and increasing bending yield.



AC257 Treated Lumber Approved



Applies to 305 stainless only



PHEINOX™ 305

- For use in cedar, redwood, specialty hardwood, IPE, and Mangaris
- Corrosion resistance for harsh environments
- Corrosion resistance for wet environments
- Stain resistant in specialty wood

PHEINOX™ 316




- For use within 1 mile of the coast
- Marine-Grade protection for Superior corrosion resistance
- Superior Corrosion resistance for coastal environments
- Stain resistant in specialty wood

U.S. (Std.) Size (Dia.x Length)	Bulk Part No.	ORGILL SKU	Bulk Box Qty.	Pro-Pak Part No.	ORGILL SKU	Pro-Pak Pail Qty.	Handy-Pak Part No.	ORGILL SKU	Handy-Pak Pack Qty.
R4™ SCREWS : PHEINOX™ 305									
 T-25 #10 x 2-1/2"	25133		2,500	61633	4899555	240	61733	4899571	80
#10 x 3-1/8"	25137		1,500	61637	4899563	210	61737	4899589	70

RSS™ SCREWS: PHEINOX™ 305									
 T-30 5/16" x 3-1/8"	30221		500						
5/16" x 4"	30225		400				62225	4899621	45
5/16" x 5-1/8"							132231		40
5/16" x 6"	30235		300						

RT COMPOSITE™ TRIM SCREWS: PHEINOX™ 305									
 T-10 #8 x 2"				36077	0623728	600			
#8 x 2-1/2"	35079	2182764¹	3500	36079	0623702	560	37079	0623710	100
 T-15 #9 x 2-1/2"				36101	0623603¹	365			

FIN / TRIM™ SCREWS: PHEINOX™ 305									
 T-10 #8 x 1-1/2"				61728	4899605	510	37724	0623660	100
#8 x 2"				61730	4899613	420	67728	0623637²	100
#8 x 2-1/2"				36734	0623595¹	385	67730	0623678	100
#8 x 3-1/8"							37734	0623686	100
 T-15 #9 x 2-1/2"				36752	0623694	365			

R4™ SCREWS: PHEINOX™ 316									
 T-25 #10 x 2-1/2"							137133	5150016	80
#10 x 3-1/8"							137147	5150024	70

FIN / TRIM™ SCREWS: PHEINOX™ 316									
 T-10 #8 x 2-1/2"							147730		100

2" bit included in Pro-Paks. 1" bit with Handy-Paks. *Does not come with the Zip-Tip™ feature.
†Does not have the added CEE-THREAD™ feature.

¹Available in Inwood, Hurricane
²Available in Inwood, Hurricane, Sikeston



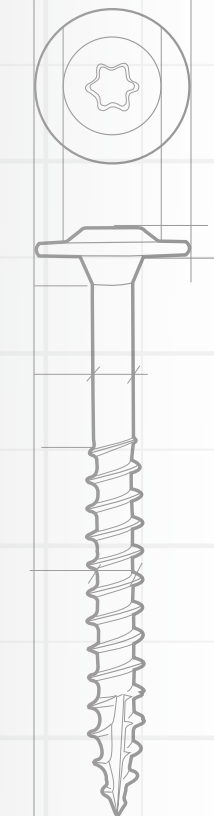
GRK's Cabinet™ screws are designed specifically for use in cabinet construction and installation. Cabinet™ screws are manufactured in a #8 gauge (4 mm) diameter for universal size convenience.

These screws are thin enough to prevent most material splitting, while providing sufficient strength to guarantee a secure installation. The washer head design presses flush against any material surface.

The Cabinet screw can also be used for light duty framing applications where a smaller diameter shank is necessary, yet a need exists for drawing power delivered by the washer head.

White Cabinet Screws match perfectly with white cabinet frames without the need of sticker covers. Specialized Powder Coated heads will not chip while being driven in, allowing for a clean finish. They are ideally suited for a wide variety of interior applications, including closets and garage organizational systems.

GRK
FASTENERS™



LOW PROFILE CABINET™ SCREWS

Quick and Secure Installation



**AC257 Treated
Lumber Approved**

- **Recessed Star Drive:** Zero Stripping, with 6 points of contact.
- **Washer Head:** Creates a flush, clean hold for a strong and secure installation.
- **W-Cut™:** Low torque, faster drive.
- **Zip-Tip™:** No pre-drilling, faster penetration.
- **Case Hardened Steel:** For high tensile, torque, and shear strength.
- **Climatek™ Coating is AC257 code approved** for use in treated lumber.
- For interior / exterior use.
- **White Cabinet Screw:** For interior use only.

	U.S. (Std.) Size (Dia. x Length)	Bulk Part No.	ORGILL SKU	Bulk Box Qty.	Pro-Pak Part No.	ORGILL SKU	Pro-Pak Pail Qty.	Handy-Pak Part No.	ORGILL SKU	Handy-Pak Pack Qty.
 T-15	#8 x 1"							96050*		100
	#8 x 1-1/4"	10069	2816387	4,000	100069	2816452	330	114069	5149737	100
	#8 x 1-1/2"	10073	2816262 ¹	3,000	100073	2816478	330	114073	5149737	100
	#8 x 1-3/4"	10075	2816270 ¹	2,000				12075	5149752	100
	#8 x 2"	10077		2,000	96077	5378435	330	113077	5149760	100
	#8 x 2-1/2"	10079	2816288 ¹	1,500	110079	2816486	330	113079	5149778	100
	#8 x 2-3/4"							113081	5149588 ³	100
	#8 x 3-1/8"	10083	2816361	1,000	110083	2816494	270	114083	5149786	50

WHITE LOW PROFILE™ CABINET SCREWS

 T-15	#8 x 1-1/4"							120680	5149851 ²	80
	#8 x 1-1/2"							120670	5149901	80
	#8 x 2-1/2"							120660	5149885	80

NOTE: Pro-Paks need to be ordered in multiples of two. 2" bit included in Pro-Paks.
*Does not come with the Zip-Tip™ feature.

¹Available in Inwood, Hurricane
²Available in Hurricane, Sikeston
³Available in Inwood, Hurricane, Sikeston



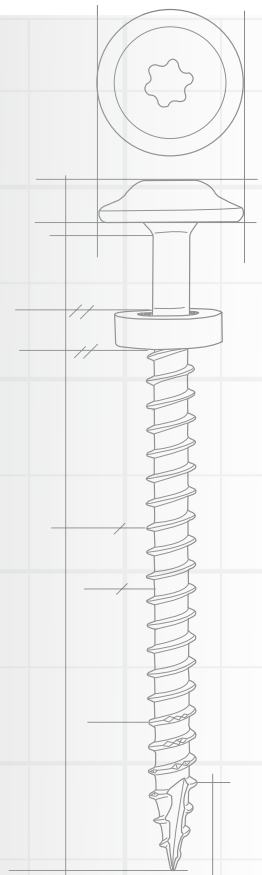
**Ideal for Cabinets
and so much more.
Also excellent for a
variety of interior or
exterior jobs.**

The MSS™ was developed and patented based on the RSS™ model. This screw has an integrated washer-head and is complemented by a rubber washer below the screw head.

This feature also helps protect the washer from prolonged exposure to the sun for long lasting, secure siding installations.

- **White Color, Low Profile Head** produces a clean, finished look which is preferred for moldings, closet organizers, and metal siding.
- **Washer Head** increases holding power.
- **Rubber Washer** seals drill hole from the elements.
- **W-Cut™ Thread Design** tiny saw blades reduce torque by cutting through the material.
- **ZIP-TIP™** for easy starts and no pre-drilling.
- For use in interior or exterior applications including metal siding, garage door trim, and even closet organizers. Not for use with treated lumber.

GRK
FASTENERS™



MSS™ METAL SIDING SCREW

Integrated Head Design with Powder Coating Finish

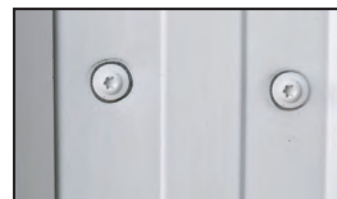


T-25

U.S (Std.) Size	Part No.	ORGILL SKU	Qty.
#9 x 1-1/2"	40090	7292994 ¹	3,000

1" bit included

¹Available in Sikeston
²Available in Hurricane, Sikeston



Self-tapping screws with integrated washer head, for fastening metal siding to a wooden framed structures.

GRK's adjustable Top Star™ shim screw, is in fact a screw within a screw that allows you to install wooden doors or windows without the use of shims.

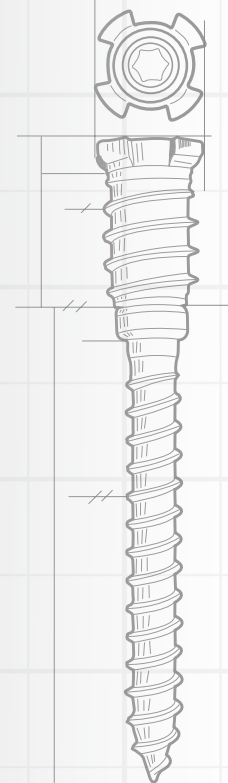
The quick and easy system reduces labor and allows for hassle-free adjustment to ensure plumb installation.

- **Recessed Star Drive:** Zero Stripping, with 6 points of contact.
- **4-point 3/8" Diameter Threaded Sleeve** provides a secure hold in your wooden frame.
- **Micro-Adjustments** allow for an absolutely plumb installation.
- **Use with GRK's Top Star™ Crown and T-15 Star Bit System.**
- **White Zinc Plated** finish for lasting durability.
- **For Shim Free Installation** of wooden doors, windows, insulation, paneling, built-in wall units, and cabinets.

GRK
FASTENERS™



Door stop or cover caps will hide hole



TOP STAR™ ADJUSTABLE SHIM SCREWS

For Plumb Installation of Wooden Doors and Windows. No More Shims!

The Complete Top Star™ System Includes:

BIT **CROWN** **THREADED SLEEVE**



TOP STAR™ ADJUSTABLE SHIM SCREWS			
U.S. (std.) Size	Pro-Pak Part No.	ORGILL SKU	Pro-Pak Qty.
3/8" x 2-1/2"	20157		100
3/8" x 3-1/8"	20161	4052445	100

TOP STAR™ CROWN / BIT			
	Part No.	ORGILL SKU	Blister-Pak Qty
	86465	5378187	1



NOTE: Crown and Star bit system included in each bulk box. 5/16" drill bit not included.

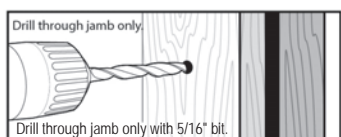
NOTE: Pro-Paks need to be ordered in multiples of two.

The Bit drives the Top Star™ into the material when the Crown and Bit are combined. Using the Bit without the Crown adjusts the distance.

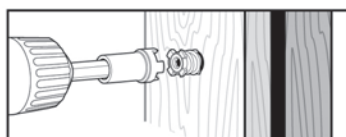
The Threaded Sleeve moves independently from the Top Star™ unless locked by the Crown. When locked, the Top Star™ gets driven into the material.

Unlocked, the installed Top Star™ is ready for levelling.

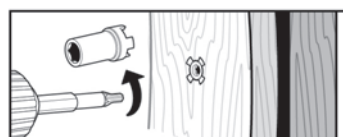
1



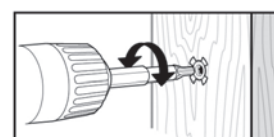
2



3



4



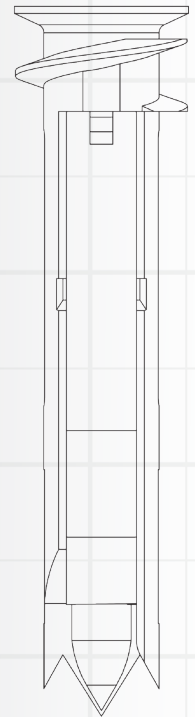
E-Z Anchors® are ideal for hanging accessories, signs, fixtures, and shelving units on drywall. Designed to self-drill flush into drywall for easy and fast installations. No pre-drilling necessary. The threads are formed to provide increased stability and a secure hold.

E-Z Anchor® Twist-N-Lock is designed for light to medium-duty applications. The audible click provides confirmation of the anchor being firmly set. Threads cut deeply to resist pull-out and provide a secure hold.

E-Z Anchor® Stud Solver is designed for light to medium-duty applications. Installs anywhere on a wall, even if you hit a wood stud behind the drywall. Threads cut deeply to resist pull-out and provide a secure hold.

E-Z Anchor® Toggle Lock is designed for heavy-duty drywall applications. The superior 1-piece assembly prevents losing extra pieces behind the wall. The toggle bar swivels easily during assembly to provide a secure hold.

Buildex® Stucco Anchor is designed for light to medium-duty applications in stucco. The zinc plating is designed to be durable in exterior and interior applications. Kits include a drill bit for installation.



E-Z Anchor® Drywall Anchors

Easy to Install with Strong Holding Power

U.S. (Std.) Size MAX LOAD	Large Pack Part No.	ORGILL SKU	Large Pack Qty.	Med. Pack Part No.	ORGILL SKU	Medium Pack Qty.	Small Pack Part No.	ORGILL SKU	Small Pack Qty.
E-Z Anchor Twist-N-Lock Anchors									
50 lbs	25350		50	25200		25	11353	6212278	6
75 lbs	25310	8436750	50	25210		20	11364	7843782	4
E-Z Anchor Stud Solver Anchors									
40 lbs							57828	4898839	50
50 lbs							57831	4898847	50
E-Z Anchor / E-Z Toggle Lock Anchor									
100 lbs							57774	4898821	25
BUILDEX STUCCO ANCHORS									
3/16" x 1-1/2" Hex Head				31810		25	31710		4
3/16" x 1-1/2" Flat Head				31820		25	31720		4
1/4" x 2-7/8"				31840		25	31740		4

E-Z Anchor Contractor Packs

U.S. (Std.) Size (Max Load)	Contractor Pack Part No.	Contractor Pack Qty.
E-Z Anchor Contractor Twist-N-Lock Anchors		
75 lbs.	25410	100

- **No Pre-Drilling:** Screws directly into drywall with a Phillips screwdriver.
- **Self-Piercing Point:** Positions anchor in desired location without slipping and starts self-drilling faster.
- **Clean Finish:** Installs nails flush into drywall.
- **Strong Holding Power:** Prevents loose connections and items from wobbling.

Warning: Do not use Twist-N-Lock or Stud Solver anchors for ceiling applications. Do not use for mounting televisions. Load ratings are for items hung flush to the wall. Load ratings decrease when hanging items that project from the wall.

Tapcon®

Concrete Screw Anchors

TAKE THE JOB TO THE NEXT LEVEL

The next generation of Tapcon Anchors are engineered to be installed fast and trusted for a lifetime. They're the original and still the best when it comes to concrete anchoring.



STAR HEAD

- Engineered for a more stable drive with no bit slip
- Climaseal™ coating for corrosion resistance + long-lasting quality
- Marked so you can tell it's a genuine Tapcon



HEX HEAD

- NEW Underhead Ribs to increase productivity and installation success
- Resistant to anchor spinouts and head snaps
- Climaseal™ coating for corrosion resistance + long-lasting quality

THE ORIGINAL, TRUE BLUE SCREW.

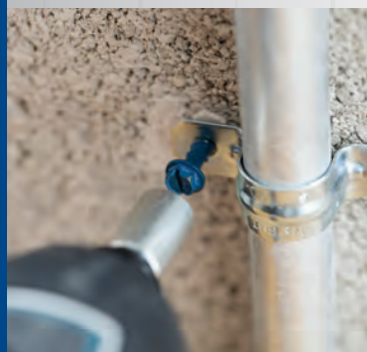


For decades, Tapcon products have enabled professionals to get their light to medium-duty concrete anchoring jobs done right the first time, every time. Designed to deliver 30% less torque and 20% more holding power, Tapcon anchors are the #1 choice of professionals.

Tapcon concrete screw anchors are designed to deliver superior holding power in all forms of masonry (concrete, CMU, and brick). The advanced WERCS threadform turns any anchoring job into a fast and easy process.

Offering everything from the anchors needed to fasten any fixture to concrete, to the drill bits that deliver a more precise hole and maximize holding power, to the Tapcon Pro Installation Kit that makes jobs faster and easier, Tapcon provides professionals with all the tools they need for confidence in a job done right.

Tapcon
GENUINE Concrete Screw Anchors



TAPCON® CONCRETE SCREW ANCHORS

Nothing Anchors Like Tapcon

- **Superior Holding Strength** for confidence in a job done right.
- **Corrosion-resistance and long-lasting performance** from the innovative Climaseal blue coating.
- **Advanced WERCS Threadform** reduces the installation torque & allows for use in a wider range of materials.
- **ICC-ES** approved for use in anchoring into concrete (ESR-2202).
- A long-standing reputation for quality, strength, and ease of installation from industry professionals.

With over one billion anchors sold, Tapcon concrete anchors deliver the ease of use, superior precision, and unparalleled performance that professionals demand.



U.S. (Std.) Size (Dia. x Length)	Bucket Part No.	ORGILL SKU	Bucket Qty.	Lg. Clam Part No.	ORGILL SKU	Lg. Clam Qty.	Med. Pack Part No.	ORGILL SKU	Medium Pack Qty.	Small Pack Part No.	ORGILL SKU	Small Pack Qty.
STAR FLAT HEAD												
3/16" x 1-1/4"	28550	7227697	225	28350	4635942	75	28250	2120731 ³	25	28150		8
3/16" x 1-3/4"	28555	7227705	225	28355	2331452	75	28255	2120749 ³	25	28155		8
3/16" x 2-1/4"	28560	7227713	225	28360	1990977	75	28260	2120756 ³	25	28160		8
3/16" x 2-3/4"	28565	7227721	225	28365	8656688	75	28265	2120822 ³	25	28165		8
1/4" x 1-3/4"	28575		225	28375	6755573	75	28275	2120830 ³	25	28175		8
1/4" x 2-1/4"				28380	7257967	75	28280	2120848 ³	25	28180		8
1/4" x 2-3/4"	28585	7227739	150	28385	8649568	75	28285	2120855 ³	25	28185		8
1/4" x 3-3/4"				28395	0652487	75	28390		25			
1/4" x 4"							28397	5797444 ²	25			
HEX HEAD												
3/16" x 1-1/4"				24300	2120590	75	24200	2120640 ³	25	24100		8
3/16" x 1-3/4"				24305	1006386	75	24205	2120657 ³	25	24105		8
3/16" x 2-3/4"				24310	9148941	75	24210	2120665 ³	25	24110		8
1/4" x 1-1/4"	24515	7227648	225	24315	8114035	75	24215	2120673 ³	25	24115		8
1/4" x 1-3/4"	24520	7227663	225	24320	5441977	75	24220	2120681 ³	25	24120		8
1/4" x 2-1/4"	24525		150	24325	9672213	75	24225	2120715 ³	25	24125		8
1/4" x 2-3/4"	24530	7227671	150	24330	8129652	75	24230	2120723 ³	25	24130		8
1/4" x 3-1/4"	24501		150	24301	1006394	75				24101		8
1/4" x 3-3/4"				24340	2974004	75	24335		25			
1/4" x 4"							24345	4635959	25			
WHITE ULTRASHIELD TAPCON												
3/16" x 1-3/4"				24371		75				24171		8
3/16" x 2-1/4"				24372		75				24172		8
3/16" x 2-3/4"				24367		75				24167		8
1/4" x 2-3/4"				24388		75	24288		25	24188		8
1/4" x 3-1/4"				24391		75						
1/4" x 3-3/4"				24392		75						
410 STAINLESS STEEL TAPCON												
3/16" x 1-3/4"										26155		8
3/16" x 2-3/4"										26165		8
1/4" x 1-3/4"										26120		8
1/4" x 2-3/4"										26130		8
MAXI-SET TAPCON												
1/4" x 2-1/4"				24326		50						
1/4" x 2-1/4" White				24323		50						
TAPCON DRILL BITS												
5/32" x 3-1/2"										11256	7223332	1
5/32" x 4-1/2"							11249	3481058	4	11247	1051209	1
5/32" x 5-1/2"										11363	4742706	1
3/16" x 3-1/2"										11257	5712336	1
3/16" x 4-1/2"							11250	8240988 ¹	4	11248	5407291	1
3/16" x 5-1/2"										11362	2073021	1
5/32" x 7" SDS										11492	5148606	1
3/16" x 7" SDS										11491	5148564	1
1/4" x 7" SDS										11493	5148598	1
3/8" x 8" SDS										11494		1
1/2" x 10" SDS										11495		1
TAPCON PRO INSTALLATION KIT												
TAPCON PRO INSTALLATION KIT WITH STAR BIT										79013	8673550	1

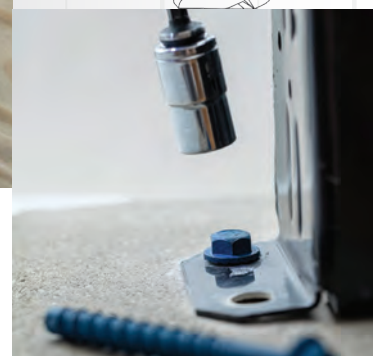
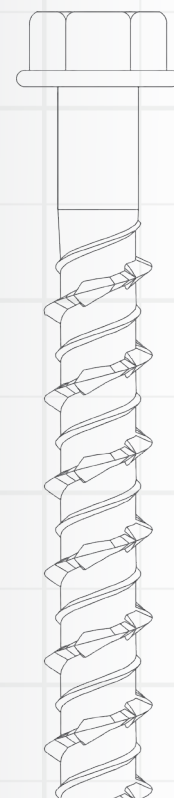
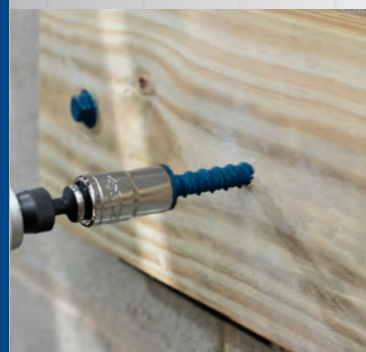
¹Available in Tifton, Inwood, Hurricane, Kilgore, Sikeston²Available in Tifton, Inwood, Hurricane, Kilgore, Post Falls³Available in Hurricane

Ideal for projects that require heavy-duty holding power, Tapcon+ concrete screw anchors are the stronger, faster, and easier masonry anchoring solution. This heavy-duty screw anchor features a high-strength body that's built to resist both high wind and seismic tension and is ICC-ES approved for use in both cracked and un-cracked concrete.

Superior to wedge and sleeve anchors, Tapcon+ installs in less than half the time while delivering 20% more holding power and the flexibility to install closer to the edge of the concrete and closer to one another.

- **ICC-ES Approved** for use in uncracked & cracked concrete and seismic conditions (ESR-3699).
- **Heavy-Duty Holding Power** in all concrete conditions.
- **Flexibility** to install closer to the edge & closer together with confidence.
- A long-standing reputation for quality, strength, and ease of installation from industry professionals.

HEAVY DUTY
Tapcon+
Concrete Screw Anchors



TAPCON[®] CONCRETE SCREW ANCHORS

Stronger. Faster. Easier.

U.S. (Std.) Size (Dia. x Length)	Pro-Pak Part No.	ORGILL SKU	Pro-Pak Qty.	Handy-Pak Part No.	ORGILL SKU	Handy-Pak Pail Qty.	Part No.	ORGILL SKU	Qty.
5/16" x 2-1/4"				24292	1210608	15	24192	9191867	4
5/16" x 3"				24293	2120616	15	24193	9191875	4
3/8" x 3"	11413	5148572	10				50403	6972327	2
3/8" x 4"	11414	5148580	10				50404	6972343	2
1/2" x 4"	11420	5150032	10				50408		2
1/2" x 6"	11421		10				50426	6972350	2



ICC-ES ESR-3699
2015 IBC
Compliant

Trubolt Wedge Anchors offer maximum strength and ultimate flexibility making them the PRO choice for heavy-duty anchoring. This wedge anchor features a high-strength body that is built to resist tension and shear loads, and it is code approved for use in uncracked concrete per ICC-ES ESR-2251.

Not only is Trubolt code recognized, but this wedge anchor offers a full line of diameter options and a variety of lengths. Trubolt wedge anchors are also available in both electrogalvanized and hot-dip galvanized finishes to perform in various applications. For additional application versatility, Trubolt wedge anchors are fully threaded to accommodate a greater range of fixture thicknesses. The wedge anchor's stainless steel clip provides extended corrosion resistance to ensure the long term integrity of connections.

- **ICC-ES Approved** for use in uncracked concrete (ICC-ES-ESR-2251).
- **Heavy-Duty Holding Power** in concrete conditions.
- **Fully Threaded Anchor Design** for application versatility.
- **Stainless Steel Clip** provides additional corrosion protection.
- A long-standing reputation for quality, strength, and ease of installation from industry professionals.



TRUBOLT® WEDGE ANCHORS

Maximum Strength for Heavy-Duty Concrete Anchoring

U.S. (Std.) Size (Dia. x Length)	Pro-Pak Part No.	ORGILL SKU	Pro-Pak Qty.	Handy-Pak Part No.	ORGILL SKU	Handy-Pak Pail Qty.	Poly-Bag Part No.	ORGILL SKU	Poly-Bag Qty.
1/4" x 2-1/4"				12377	7973670	25	50080		1
3/8" x 2-1/4"	12367		50	12015	2148617 ¹	15	50081		1
3/8" x 3"	03014	6111843 ³	50				50082		1
3/8" x 3-3/4"	12370	2807741	50	12016	2148591 ¹	15	50083		1
3/8" x 5"				12022	5149984 ¹	15	50084		1
1/2" x 2-3/4"							50085		1
1/2" x 3-3/4"	12371		25	12017	2148609 ¹	10	50181		1
1/2" x 4-1/4"	12372	5182134	25	12020	4771770 ¹	10	50086		1
1/2" x 5-1/2"	12373	4174728	25	12019	2148583 ²	10	50087		1
1/2" x 7"							50088	2425965 ¹	1
5/8" x 5"	12310	7060122	10				50089		1
5/8" x 6"	03041	9922253 ³	10						
5/8" x 7"	03044	3756756	10				51030		1
5/8" x 8-1/2"							50305	7367238 ¹	1
3/4" x 5-1/2"	02992	7060114	10				51001		1
HOT-DIPPED GALVANIZED									
1/2" x 5-1/2"				12021	4771762	10	50303		1
#8 x 1-1/2"	12029	5149992 ¹	10				50307		1



¹Available in Inwood

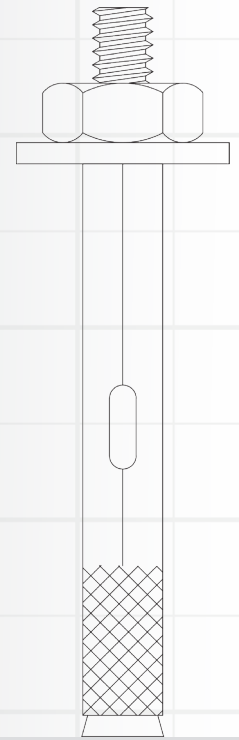
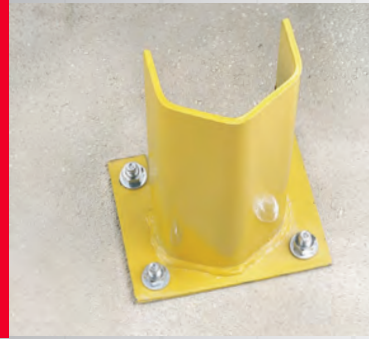
²Available in Tifton, Inwood, Kilgore, Sikeston

³Available in Tifton, Inwood, Hurricane, Kilgore, Sikeston

As the company that invented concrete anchoring technology, Red Head holds a unique place in the history of construction and building. The Red Head brand has become synonymous with the anchoring product category it invented. That's why Red Head can help you get any job done right, from heavy-duty ceiling applications to light-duty work in block and brick.

Our sleeve anchor line is our most versatile anchor with the ability to fasten in block, brick, masonry, and solid concrete.

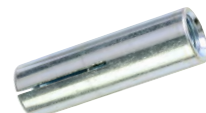
For a lighter duty project, Poly-Set and Hammer-Set are great choices for block, brick, and concrete and allow for quick and easy installation. For heavy-duty overhead applications, use our Drop-In anchors. Use the complete family of anchors and SDS bits to ensure precise hole depth and diameter when using our anchors.



RED HEAD® CONCRETE ANCHORS

Versatile Anchoring Solutions for Construction & Building

U.S. (Std.) Size (Dia. x Length)	Pro-Pak Part No.	ORGILL SKU	Pro-Pak Qty.	Handy-Pak Part No.	ORGILL SKU	Handy-Pak Pail Qty.	Poly-Bag Part No.	ORGILL SKU	Poly-Bag Qty.
SLEEVE ANCHORS									
1/4" x 2-1/4" Acorn Hd							50122		1
1/4" x 2-1/4" Threshold Hd							50123		1
1/4" x 3-1/8" Flat Hd							50121		1
5/16" x 1-1/2" Hex Hd							50112		1
5/16" x 2-1/2" Hex Hd							50113		1
3/8" x 1-7/8" Hex Hd							50114		1
3/8" x 3" Hex Hd	11281		50	11013		15	50115		1
1/2" x 2-1/4" Hex Hd							50116		1
1/2" x 3" Hex Hd	11283		25	11014		10	50117		1
1/2" x 4" Hex Hd	11285	5151410*	25	11018		10	50118		1
5/8" x 4-1/4" Hex Hd							50119		1
5/8" x 6" Hex Hd							50120		1
POLY-SET ANCHORS									
1-1/4"				35220		50			
1-7/16"				35225		50			
HAMMER-SET ANCHORS									
1/4" x 1"	35300		75	35200		25			
1/4" x 1-1/2"	35303	7795655	50	35203		15			
1/4" x 2"	35305	7949886	50	35205		15			
1/4" x 3"	35207		25						
DROP-IN ANCHORS									
3/8" Anchor	01891		50				50125	9977513	1
1/2" Anchor							50126	2401198	1
3/8" Setting Tool							07499		1
1/2" Setting Tool							07501		1



For jobs requiring versatility, high performance, and efficiency, Red Head's A7+ Concrete Adhesive Anchor is the one anchoring solution that does it all. A7+ takes only 45 minutes to fully cure and can be used in challenging conditions like cold temperatures and water-filled holes. A7+ is also ICC-ES approved for cracked concrete and seismic building code requirements.

A7+ can also be used in any standard medium-duty caulk gun, eliminating the inconvenience of needing a special dispensing tool. Combine the simplicity of dispensing with the quick-curing product, and installation is fast, easy, and doesn't take time away from the rest of the project.

The A7+ concrete adhesive anchoring solution is a high-performing anchor that rivals other products on the market in both price and features. This high performance and efficiency allows for less time on the job and more productivity.

Providing code approved performance and a fast 45 minute cure time, Red Head A7+ is the concrete anchoring adhesive that delivers.

A7+

 **RED HEAD®**



RED HEAD® A7+ ADHESIVE ANCHORS

High Strength Adhesive Anchoring Solution for Harsh Conditions

- **ICC-ES Approved** for use in cracked concrete and seismic conditions (ICC-ES ESR-3903).
- **Quick 45 Minute Cure Time** for fast installation.
- **Easy Dispensing** with a standard caulk gun, eliminating the need for any special tools.
- A successful cure in cold temperatures, as low as 14° F.
- Increased productivity with a successful cure in saturated concrete and water-filled holes.
- A long-standing reputation for quality, strength, and ease of installation from industry professionals.



U.S (Std.) Size	Part No.	ORGILL SKU	Qty.
9.5 oz. Cartridge	07111	5440722	1



ICC-ES ESR-3903
2015 IBC
Compliant

Ramset is a leading line of powder actuated tools and fasteners for residential and commercial remodeling. As the developer of the very first powder actuated tool in 1948, Ramset has a history of reliability, innovation, and market-leading performance. Ramset has supplied more than a million tools to professional contractors specialty tradesmen and continues to deliver products that drive jobsite speed. Utilizing the whole line of Ramset tools, powder loads, and fasteners increases jobsite productivity and leads to a job done right.

From tools that display the market leading innovation, like Cobra+ and MasterShot, to the full range of drive pins and powder loads for your applications, you can be sure to find what you need with the Ramset family of products.



RAMSET® TOOLS AND FASTENERS

Powder Actuated Tools for Residential & Commercial Remodeling.

- Powder actuated tools for concrete or steel.
- Drives jobsite speed through quick and efficient fastening.
- Market leading tool innovations help you get the job done right.
- The Powder Actuated Tool choice for PROs.

Item/Tool	Part No.	ORGILL SKU	Qty.
Cobra+ .27 Caliber Semi-Automatic Powder Actuated Tool	16942	4052254	1
MasterShot .22 Caliber Single-Shot Powder Actuated Tool	40088	2919652	1
TriggerShot .22 Caliber Single-Shot Powder Actuated Tool	40066	2919660	1
HammerShot .22 Caliber Single-Shot Powder Actuated Tool	00022	9801895	1



U.S. (Std.) Size (Dia. x Length)	Large Box Part No.	ORGILL SKU	Large Box Qty.	Small Clam Part No.	ORGILL SKU	Small Clam Qty.
-------------------------------------	-----------------------	---------------	-------------------	------------------------	---------------	--------------------

DRIVE PINS

.300 x 1/2"	06171	3756731	100			
.300 x 3/4"	00747	5148556	100			
.300 x 1"	00759	3538238	100			
.300 x 1-1/2"	00774	2533693	100			
.300 x 2"	00780	8259772	100			
.300 x 2-1/2"	00786	5606066	100	00787	7542929	25
.300 x 3"	00794	8104572	100			

DRIVE PINS WITH WASHERS

.300 x 1"	00797	9681321	100			
.300 x 1-1/2"	00803	1601574	100	00804	4826632 ²	25
.300 x 1-1/4"	00800	5980974	100			
.300 x 2"	00806	9262825	100			
.300 x 2-1/2"	00809	0841486	100	00810	5377924	15
.300 x 3"	07886	7174246	100	07887		15

RAMGUARD DRIVE PINS FOR USE IN TREATED LUMBER

.300 x 2-1/2"	09167	2656411	100			
.300 x 2-1/2" with Washers	09173	7084965	100			
.300 x 3" with Washers	09176	1705912	100			

Caliber	Color	Type	Strip Load Part No.	ORGILL SKU	Strip Load Qty.	Single Shot Box Pt. No.	ORGILL SKU	Single Shot Box Qty.	Single Shot Blister Pt No.	ORGILL SKU	Single Shot Blister Qty.
---------	-------	------	------------------------	---------------	--------------------	----------------------------	---------------	-------------------------	-------------------------------	---------------	-----------------------------

POWDER LOADS

.22	BROWN	Powder				00594	2273969	100			
.22	GREEN	Powder				00601	2400182	100			
.22	YELLOW	Powder				00607	7042278	100	50077	1271923 ¹	25
.27	GREEN	Strip	00652	5653746	100						
.27	YELLOW	Strip	00667	9274838	100						
.27	RED	Strip	00682	3398591	100						

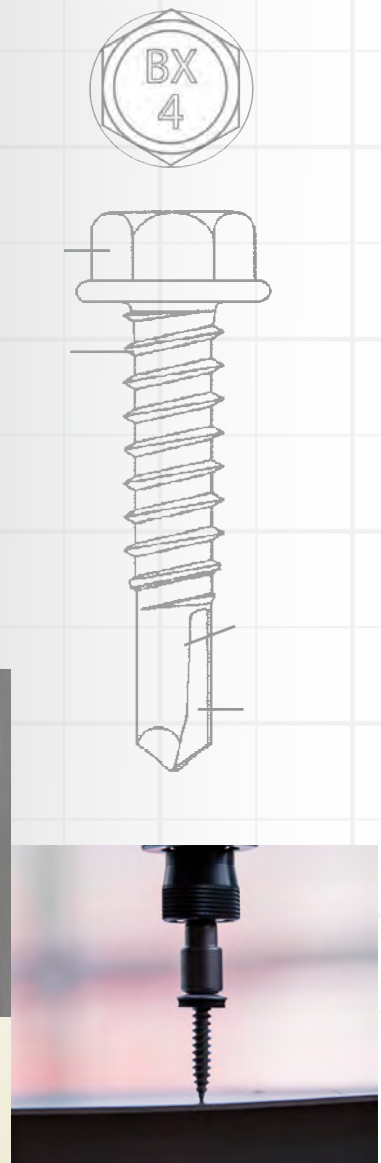
¹Available in Inwood²Available in Inwood, Hurricane, Kilgore, Post Falls

Teks® fasteners are the leading choice of self-tapping screws for use in interior/exterior applications; including metal-to-metal, wood-to-metal, and roofing applications. Professionals are able to drill faster with less force even in heavy gauge metal. The self-tapping threads are designed to tap holes while providing superior holding power ensuring strong connections between materials.

Teks® fasteners are offered in sharp and drill points that easily penetrate light to heavy gauge metal and wood. Professionals no longer have to struggle when engaging their work surface.

Teks® fasteners are offered in a wide variety of head styles to meet professionals installation needs. No tool slippage or cam-outs even with old sockets and worn bits. Professionals can drill, tap, and fasten – all in one motion.

Teks®
THE ORIGINAL



TEKS® METAL FASTENERS

Securely Fasten Metal with Speed



- **Drive surface and recess:** Reduces cam-outs to prevent slipping during installation.
- **Drill Points:** Self-drills through light to heavy gauge metal with ease.
- **Sharp Points:** Self-pierces into light gauge metal to start drilling faster.
- **Self-Tapping Threads:** Taps their own threads to provide less effort when fastening into metal.
- **Corrosion Resistant Finish:** Protects the job's appearance with long lasting coating.
- **Neoprene Washer:** Roofing screws feature a neoprene washer that provides a waterproof seal.
- **Reamer Wings:** Winged screws self-drill into wood and engage metal to provide a secure hold.
- **Lath head:** Lath Screws feature a low-profile head for a semi-flush finish for virtually any application.

U.S. (Std.) Size (Dia. x Length)	Pro-Pak Part No.	ORGILL SKU	Pro-Pak Pail Qty.	Handy-Pak Part No.	ORGILL SKU	Handy-Pak Size/Qty.
TEKS METAL TO METAL SCREWS						
HEX WASHER HEAD / DRILL POINT (METAL TO METAL)						
8 x 1/2"				21308	4052247	S/280
8 x 3/4"				21312	8587941	S/180
8 x 1"				21316	1213354	S/170
10 x 5/8"				21396		S/170
10 x 3/4"	21322	7302847	450	21320	2752962	S/150
10 x 1"				21328	0134973	M/140
10 x 1-1/2"				21332	3859055	M/90
12 x 3/4"				21336	6395677	M/120
12 x 1"	21341	4253746	400	21340	9716958	M/100
12 x 1-1/2"				21344	9716358	M/80
12 x 2"				21348	7879752	M/60
12/14 x 2"				21820		M/60
14 x 3/4"				21349		S/100
14 x 1"				21351		S/60
14 x 1-1/2"				21352	0503136	M/50
14 x 2-1/2"	21358	3636495	120	21356		M/30
HEX WASHER HEAD / SHARP POINT (METAL TO METAL)						
6 x 1/2"				21301		S/320
8 x 1-1/2"				21318		M/85
10 x 3/4"				21327		M/150
PAN HEAD / DRILL POINT (METAL TO METAL)						
8 x 1/2"				21360	3636487	S/300
8 x 3/4"				21364	9280538	S/240
10 x 3/4"				21372	4818159	S/170
PAN HEAD / SHARP POINT (METAL TO METAL)						
6 x 1/2"				21359		S/300
PANCAKE HEAD / DRILL POINT (METAL TO METAL)						
10 x 5/8"				21376		S/190
TEKS WOOD TO METAL SCREWS						
PHILLIPS FLAT HEAD / DRILL POINT W/ REAMER WINGS (WOOD TO METAL)						
1/4-20 x 3"				21378		M/40
10 x 1-7/16"	21381	1374099	300	21380	9055013	S/100
12 x 2-3/4"	21386	3393246	200	21384	1374073	S/40

U.S. (Std.) Size (Dia. x Length)	Pro-Pak Part No.	ORGILL SKU	Pro-Pak Pail Qty.	Handy-Pak Part No.	ORGILL SKU	Handy-Pak Size/Qty.
TEKS ROOFING SCREWS						
HEX WASHER HEAD / DRILL POINT (METAL TO WOOD)						
9 x 1"	21401	7060130	360	21400	3393238	M/120
9 x 1-1/2"	21406	0455683	400	21404	6314538	M/100
9 x 2-1/2"				21407		M/60
HEX WASHER HEAD / DRILL POINT (METAL TO METAL)						
12 x 3/4"				21408	0455675	M/90
12 x 1"	21418	7060148	400	21412	2169001	M/80
12 x 1-1/2"	21422	7060171	300			
12 x 2"	21427	7060197	150	21416	4883922	M/50
TEKS LATH SCREWS						
MODIFIED TRUSS HEAD / SHARP POINT (METAL TO METAL)						
8 x 1/2"				21500	6909139	S/260
8 x 3/4"	21506	0741207	600	21504	9026063	S/200
8 x 1"	21510	2856169	510	21508	0741199	S/170
8 x 1-1/4"				21512	2856151	M/140
8 x 1-5/8"				21516	3969748	M/120
8 x 2"				21518		M/100
8 x 2-1/2"				21519		M/80
MODIFIED TRUSS HEAD / DRILL POINT (METAL TO METAL)						
8 x 1/2"				21520	5986120	S/260
8 x 3/4"	21525	1235822	600	21524	0121475	S/200
8 x 1"	21530	5068978	510	21528	3251584	S/170
8 x 1-1/4"				21532	5068960	M/140
8 x 1-5/8"				21536	8992836	M/120
8 x 2"				21538		M/100
8 x 2-1/2"				21540		M/80

Pro-Paks and Handy-Paks must be ordered in eaches but in Master Carton Quantities.



Hex Washer Head



Flat Head



Pan Head



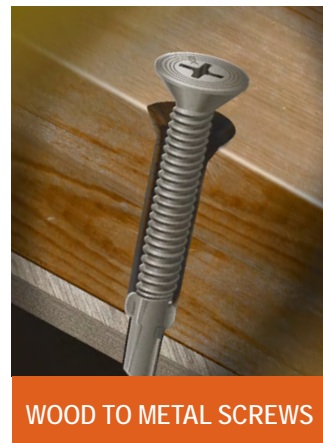
Modified Truss Head



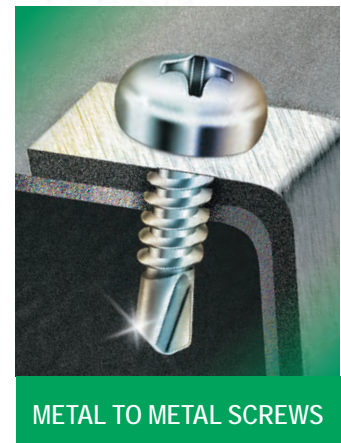
ROOFING SCREWS



LATH SCREWS



WOOD TO METAL SCREWS



METAL TO METAL SCREWS

Backer-On® cement screws are designed for attaching Hardie-Backer® cement board and Rock-On® cement board screws are designed for attaching Durock® cement board to wood or light gauge steel studs. The patented serrated head design countersinks for a flush finish even at angle, providing a smooth surface for tile installation. The T-25 Star Drive recess provides Stikfit™ for one-handed installation. Climacoat corrosion resistant finish prevents rust from bleeding into grout. Making it perfect for use in high moisture areas such as bathrooms and kitchens.

Backer-On® and Rock-On® cement board screws comply with ANSI standards for cement board installation as specified by cement board manufacturers. Cement board manufacturers require ANSI compliance in order to remain eligible for warranty.

- **Serrated Head:** Designed to drive flush even at an angle.
- **Star Drive with T-25 Bit:** Provides Stikfit™ for easy one-handed installation and eliminates cam-outs.
- **Hi-Lo / Single Threads:** Starts quickly and drives smooth in cement boards.
- **Sharp Points:** Offers immediate pick-up and eliminates the need to pre-drill.
- **Climacoat Finish:** Corrosion resistant for preventing rust from bleeding into tile.

BACKER-ON® ROCK-ON®

CEMENT BOARD SCREWS

Fasten Cement Board Right with a Smooth & Corrosion-Resistant Finish



U.S. (Std.) Size (Dia. x Length)	Pro-Pak Part No.	ORGILL SKU	Pro-Pak Pail Qty.	Handy-Pak Part No.	ORGILL SKU	Handy-Pak Size/Qty.
BACKER-ON SCREWS						
#9 x 1-1/4"	23406	6972236	750	23401	3635240	M/185
#9 x 1-5/8"	23416	6972269	575	23411	6957252	M/140
#9 x 2-1/4"				23421		M/100
ROCK-ON SCREWS						
#9 x 1-1/4"	23306	1413699	750	23301	8688004	M/185
#9 x 1-5/8"	23316	6365257	575	23311	1413681	M/140
#9 x 2-1/4"				23321		M/100

2" T25 Star Drive bit included in Backer-On and Rock-On handy-paks and Pro-paks.

BACKER-ON® / ROCK-ON® StikFit Bit

SIZE POINT	PART NO.	CARDED QUANTITY / PER PACK
#T-25 2"	24000	(2) StikFit Bits

The T-25 StikFit Bits modified tip eliminates wobble and offers one-handed installation only for Backer-On/Rock-On cement board screws. The bits are made with S2 modified steel for long lasting bit life.



Pro Tip: Standard roofing nails, dry wall screws, and other alternatives to cement board screws are typically not specified by cement board manufacturers and not ANSI compliant.

Star Drive Bits, Crown / Bit



BIT SIZE	BIT COLOR	FITS	BULK PART NO.	ORGILL SKU	BULK BOX QTY.	CARDED PART NO.	ORGILL SKU	CARDED QTY. PER PACK
T-10 2"	YELLOW	TRIM HEAD #8	86419	5378237	25	187419	4052452	2
T-10 3"	YELLOW					87421	5378161	2
T-15 2"	RED	R4™ SCREW #6 & 8 TRIM™ HEAD #9	86427	5378245	25	187427	4052460	2
T-15 3"	RED	CABINET™ SCREW				87429	5378161	2
T-20 2"	PURPLE		86435		25	187435	4052478	2
T-25 2"	GREEN	R4™ #9, 10 & 12 RSS™ #10 & 1/4"	86443	5378252	25	187443	4052486	2
T-25 3"	GREEN	MSS™ #9				87445	5378179	2
T-30 2"	BLACK	RSS™ STRUCTURAL SCREW 5/16"	86451	3240025	25	187451	5378112	2
T-30 3"	BLACK	CALIBURN™ & CALIBURN PH™				87453	5378138	2
T-40 2"	BLUE	CALIBURN XL™ RSS™ STRUCTURAL SCREW 3/8"	86459	5378260	25	187459	5378120	2
CROWN / BIT								
		TOP STAR™				86465	5378187	1

HIGH IMPACT MERCHANDISERS AND BEST SELLING PRODUCT ASSORTMENTS ARE DESIGNED TO DRIVE SALES

DISPLAYS AND RACKS ARE FREE WITH QUALIFYING ORDERS



3FT PASLODE CORDLESS BEST SELLER

ORGILL SKU	ITEM #	DESCRIPTION	QTY
8688012	219348	Tool Cleaner 1pk Paslode Steel Cds	4
7346307	401482	Lubrication Oil 4Oz(Crdlss Impulse)	6
4898946	650047	Battery Paslode 6V Cordless 1pk	6
4899001	650214	PowerMaster Plus Pneumatic 30° Framing Nailer	6
4899019	650215	Paslode Compact Framing Nailer	6
4898953	650232	T250S-F16P 16GA PNEU TRIM NAILER	6
4899050	650237	F16 2 ANG. GALV (6/CTN)	2
4899068	650238	18 GA 1 1/4" Brad Nails (6/CTN)	2
4898896	650285	18 GA 2" Brad Nails (6/CTN)	6
4898904	650287	F16 2-1/2 GALV ANG (6/CTN)	6
4899134	650383	2-3/8" X 113 Brite RING Roundrive 5M	2
4899142	650385	2-3/8 X 113 RS ROUNDRIIVE	2
4899159	650387	F16 2" GALV FINISH NAILS (6/CTN)	2
4899209	650524	F16 2 1/2" GALV FINISH NAILS (6/CTN)	2
4899183	650527	2" X 113 HDG RNG Plus Offset 2M	2
4899076	650830	2-3/8" X 113 RNG HDG Plus Offset 2M	2
4899092	650836	3" X 120 HDG RNG Plus Offset 2M	2
4899118	650839	3" X 131 HDG RNG Plus Offset 2M	2
5378286	816007	3-1/4"X131 HDG SMTH Plus Offset 2M	6
5378278	816008	3"X 120 Brite Smooth Fuel/Nail 1M	9
5378310	902400	2-3/8" X 113 HDG+ RS Fuel/Nail 1M	1
5378294	902654	3" X 120 HDG+ RS Fuel/Nail 1M	6
5378351	902667	3" X 131 BRT SMTH Offset 2.5M	3
5378302	906300	3"X120 BRT SMTH Offset 2.5M	1
5378328	916000	3-1/4" X 131 BRT SMTH Offset 2.5M	1
5378336	918000	YELLOW FUEL 2 PACK (6/CTN)	1



4FT PASLODE FRAMING ASSORTMENT

ORGILL SKU	ITEM #	DESCRIPTION	QTY
8688012	219348	Tool Cleaner 1pk Paslode Steel Cds	4
7346307	401482	Lubrication Oil 4Oz(Crdlss Impulse)	6
7346257	404717	Battery Paslode 6V Cordless 1pk	6
0793547	501000	PowerMaster Plus Pneumatic 30° Framing Nailer	2
1645894	502300	PF150S-PP PNEU PP META CONN NAILER	2
4899035	513000	Paslode Compact Framing Nailer	2
4899050	650237	2-3/8" X 113 Brite RING Roundrive 5M	6
4899068	650238	2-3/8 X 113 RS ROUNDRIIVE	6
4899126	650381	2" X 113 HDG RNG Plus Offset 2M	6
4899134	650383	2-3/8" X 113 RNG HDG Plus Offset 2M	6
4899142	650385	3" X 120 HDG RNG Plus Offset 2M	6
4899159	650387	3" X 131 HDG RNG Plus Offset 2M	6
4899167	650388	3-1/4"X131 HDG SMTH Plus Offset 2M	6
4899217	650522	2-3/8" X 113 Brite SM Fuel/Nail 1M	6
4899225	650523	2-3/8" X 113 Brite RS Fuel/Nail 1M	6
4899209	650524	3"X 120 Brite Smooth Fuel/Nail 1M	6
4899175	650526	2-3/8" X 113 HDG+ RS Fuel/Nail 1M	6
4899183	650527	3" X 120 HDG+ RS Fuel/Nail 1M	6
4899233	650535	3-1/4"X 131 Brite SMTH Fuel/Nail 1M	6
4899191	650615	3-1/4" X 131 HDG+ RS Fuel/Nail 1M	6
4898862	650646	1 1/2 X .148 HT POS PLACE	6
4899076	650830	3" X 131 BRT SMTH Offset 2.5M	6
4899092	650836	3"X120 BRT SMTH Offset 2.5M	6
4899118	650839	3-1/4" X 131 BRT SMTH Offset 2.5M	6
5378278	816008	Universal Spare Fuel for Cordless Framers	9
5378369	900200	Battery Charger Paslode 120V 1pk	3
5378294	902654	Battery Paslode Li Ion 1pk	6
5378351	902667	Charger Paslode Li Ion 1pk	3
5378302	905600	CF325XP Lithium-Ion Cordless 30° Framing Nailer	2



4FT PASLODE CORE ASSORTMENT



ORGILL SKU	ITEM #	DESCRIPTION	QTY
8688012	219348	Tool Cleaner 1pk Paslode Steel Cdl's	4
7346307	401482	Lubrication Oil 4Oz(Crdlss Impulse)	6
7346257	404717	Battery Paslode 6V Cordless 1pk	6
0793547	501000	PowerMaster Plus Pneumatic 30° Framing Nailer	2
4899035	513000	Paslode Compact Framing Nailer	2
4899043	515500	T250S-F16P 16GA PNEU TRIM NAILER	2
4898946	650047	F16 2 ANG. GALV (6/CTN)	12
4898979	650213	18 GA 1 1/4" Brad Nails (6/CTN)	12
4899019	650215	18 GA 2" Brad Nails (6/CTN)	12
4898953	650232	F16 2-1/2 GALV ANG (6/CTN)	12
4899050	650237	2-3/8" X 113 Brite RING Roundrive 5M	6
4899068	650238	2-3/8 X 113 RS ROUNDRIIVE	6
4898896	650285	F16 2" GALV FINISH NAILS (6/CTN)	12
4898904	650287	F16 2 1/2" GALV FINISH NAILS (6/CTN)	12
4899126	650381	2" X 113 HDG RNG Plus Offset 2M	6
4899134	650383	2-3/8" X 113 RNG HDG Plus Offset 2M	6
4899142	650385	3" X 120 HDG RNG Plus Offset 2M	6
4899159	650387	3" X 131 HDG RNG Plus Offset 2M	6
4899167	650388	3-1/4"X131 HDG SMTH Plus Offset 2M	6
4899209	650524	3"X 120 Brite Smooth Fuel/Nail 1M	6
4899175	650526	2-3/8" X 113 HDG+ RS Fuel/Nail 1M	6
4899183	650527	3" X 120 HDG+ RS Fuel/Nail 1M	6
4899076	650830	3" X 131 BRT SMTH Offset 2.5M	6
4899092	650836	3"X120 BRT SMTH Offset 2.5M	6
4899118	650839	3-1/4" X 131 BRT SMTH Offset 2.5M	6
5378286	816007	YELLOW FUEL 2 PACK (6/CTN)	12
5378278	816008	Universal Spare Fuel for Cordless Framers	9
5378369	900200	Battery Charger Paslode 120V 1pk	3
5378310	902400	16GA Li-Ion Angled Finish Nailer	2
5378294	902654	Battery Paslode Li Ion 1pk	6
5378351	902667	Charger Paslode Li Ion 1pk	3
5378302	906300	CFN325XP Lithium-Ion Cordless 30° Framing Nailer	2
5378328	916000	16 GA STRAIGHT LI-ION FINISH	2
5378336	918000	18 GA LI-ION BRAD NAILER	2



2FT PASLODE CORDLESS CORE ASSORTMENT

ORGILL SKU	ITEM #	DESCRIPTION	QTY
5378302	906300	CFN325XP Lithium-Ion Cordless 30° Framing Nailer	1
5378310	902400	Cordless 16GA Li-Ion Angled Finish Nailer	1
4899225	650523	2-3/8" X 113 Brite RS Fuel/Nail 1M	2
4899209	650524	3"X 120 Brite Smooth Fuel/Nail 1M	2
4899837	650525	3"X 131 Brite Smooth Fuel/Nail 1M	2
4899845	650566	3"X 131 Brite Smooth Fuel/Nail 3M	2
4899233	650535	3-1/4"X 131 Brite Smooth Fuel/Nail 1M	2
4899175	650526	2-3/8" X 113 HDG+ RS Fuel/Nail 1M	2
4899183	650527	3" X 120 HDG+ RS Fuel/Nail 1M	2
5378278	816008	Universal Spare Framing Fuel (1-Pack)	9
5378294	902654	Battery Paslode Li Ion 1pk	2
5378351	902667	Charger Paslode Li Ion 1pk	1
7346307	401482	Lubrication Oil 4Oz(Crdlss Impulse)	6
8688012	219348	Tool Cleaner 1pk Paslode Steel Cdl's	4
5378286	816007	YELLOW FUEL 2 PACK (6/CTN)	6
4898912	650230	F16 1-1/4" ANG GALV (6/CTN)	6
4898920	650231	F16 1-1/2" ANG GALV (6/CTN)	6
4898946	650047	F16 2 ANG. GALV (6/CTN)	6
4898953	650232	F16 2-1/2 GALV ANG (6/CTN)	6

3FT GRK UNIVERSAL RACK WITH OR WITHOUT BULK

ORGILL SKU	ITEM #	DESCRIPTION	QTY
7214182	01099	R4 9X2 TSFH SFT PROPAK	2
7214240	01101	R4 9X 2-1/2 TSFH SFT PROPAK	2
7214257	01105	R4 9X 3-1/8 TSFH SFT PROPAK	2
7214208	01137	R4 10X3-1/8 TSFH SFT PROPAK	2
7214232	01141	R4 10X4 TSFH SFT PROPAK	2
2816395	103099	R4 9x2 110 pk	4
2816403	103101	R4 9 X 2-1/2 100pk	4
2816411	103105	R4 9 X 3-1/8 80pk	4
2816437	103137	R4 10 x 3-1/8 70pk	4
2816445	103141	R4 10x4 50pk	4
5149778	113079	Cabinet 8x2-1/2 100 pk	8
5149729	114069	Cabinet 8x1-1/4 100 pk	6
5149786	114083	Cabinet 8x3-1/8 50pk	6
4052544	115734*	FIN/Trim 8x3-1/8 300 pk	3
4052320	119724	FIN/Trim 8x1-1/2 100 pk	6
4052338	119728	FIN/Trim 8x2 100pk	12
4052346	119730	FIN/Trim 8x2-1/2 100 pk	6
4052353	119734	FIN/Trim 8x3-1/8 100 pk	12
5149885	120660	WH Cabinet 8X2-1/2 80PK	6
5149901	120670	WH Cabinet 8X1-1/2 80 PK	6
5149919	120990*	R4 Screws 9 x 2 Ext Contr pck	2
5149927	121010	R4 9X2-1/2 E-Contractor 900PK	2
5149935	121050	R4 9X3-1/8 E-Contractor 720PK	2
5149604	12133	RSS 10 X 2-1/2 50PC HANDY PAK	5
5149646	12137	RSS 10 X 3-1/8 50PC HANDY PAK	10
5149943	121410*	R4 Screws 10x4 Ext Cntr Pck	2
5149596	12221	RSS 5/16X3-1/8 100PC SFT PROPK	4
5149612	12225	RSS 5/16X4 100PC Bucket	4
5149620	12231	RSS 5/16X5-1/8 50PC SFT Handy	9
5149638	12235	RSS 5/16 X 6 50BX SFT	2
5149695	14225	RSS 5/16X4 25BX HANDYPAK	5
5149836	14231	RSS 5/16X5-1/8 20BX HANDYPAK	5
5149687	14235	RSS 5/16X6 20BX HANDYPAK	5
3661949	16730*	FIN/TRIM 8 X 2-1/2 ST PROPAK	2
4052452	187419	T-10 Bit Yellow 2 2pk	12
4052460	187427	T-15 Bit Red 2 2pk	12
4052486	187443	T-25 Bit Green 2 2pk	12
5378112	187451	T-30 Bit Black 2 2pk	12
5378120	187459	T-40 Bit Blue 2 2pk	12
4052296	61733	PHE R4 10 X 2-1/2" 305SS 80 pk	4
4899589	61737	PHE R4 10 X 3-1/8" 305SS 70 pk	4
623678	67730	PHE Fin/Trim8X2-1/2"305SS100pk	6
5378229	95200	R4 Screws 10x3 1/8 Ext Cntr	2
5378088	96020	RSS Bulk 3/8 X 8 25/Box	25
5378104	96025	RSS 3/8 X 10 25/Box	25
4052312	96065	WH FIN/Trim HD 8 X 2-1/2 100PK	4
4052429	96075	WH RT Trim 8 X 2-1/2 100/PK	4
5378211	96089	R4 12X5-5/8" , 50pk	4
5378039	00105**	R4 9X3-1/8 TSFH SFTPING BULK	1
5378047	00137**	R4 10X3-1/8 TSFH SFTPING BULK	1
2816346	10225**	RSS 5/16 X 4 SFTPING BULK	1

*NO BULK ASSORTMENT ONLY

**BULK ASSORTMENT ONLY



GRK UNIVERSAL RACK WITHOUT BULK

4FT GRK ASSORTMENT WITH OR WITHOUT BULK



4FT GRK ASSORTMENT WITHOUT BULK

ORGILL SKU	ITEM #	DESCRIPTION	NO BULK QTY	BULK QTY
7214182	01099	R4 9X2 TSFH SFT PROPAK	4	2
7214240	01101	R4 9X 2-1/2 TSFH SFT PROPAK	4	2
7214257	01105	R4 9X 3-1/8 TSFH SFT PROPAK	4	2
7214208	01137	R4 10X3-1/8 TSFH SFT PROPAK	4	2
7214232	01141	R4 10X4 TSFH SFT PROPAK	4	2
3756947	02177	R4 12X6-3/8 TSFH 50BX HANDYPK	5	5
2816395	103099	R4 9x2 110 pk	4	4
2816403	103101	R4 9 X 2-1/2 100pk	8	8
2816411	103105	R4 9 X 3-1/8 80pk	8	8
2816437	103137	R4 10 x 3-1/8 70pk	8	8
2816445	103141	R4 10x4 50pk	4	4
5149760	113077	Cabinet 8x2 100 pk	4	4
5149778	113079	Cabinet 8x2-1/2 100 pk	8	8
5149729	114069	Cabinet 8x1-1/4 100 pk	6	6
5149786	114083	Cabinet 8x3-1/8 50pk	6	6
4052544	115734	FIN/Trim 8x3-1/8 300 pk	3	3
4052536	116728	Fin/Trim 8x2 510pk	6	6
4052361	117760	FIN/Trim 9x4 50pk	4	4
4052379	117766	FIN/Trim 9x5 50pk	4	4
4052304	119079	RT Trim 8x2-1/2 100 pk	6	6
4052320	119724	FIN/Trim 8x1-1/2 100 pk	6	6
4052338	119728	FIN/Trim 8x2 100pk	12	12
4052346	119730	FIN/Trim 8x2-1/2 100 pk	12	12
4052353	119734	FIN/Trim 8x3-1/8 100 pk	12	12
5149885	120660	WH Cabinet 8X2-1/2 80PK	6	6
5149901	120670	WH Cabinet 8X1-1/2 80 PK	6	6
5149919	120990*	R4 Screws 9 x 2 Ext Contr pck	2	
5149927	121010	R4 9X2-1/2 E-Contractor 900PK	2	2
5149935	121050	R4 9X3-1/8 E-Contractor 720PK	2	2
5149604	12133	RSS 10 X 2-1/2 50PC HANDY PAK	5	5
5149646	12137	RSS 10 X 3-1/8 50PC HANDY PAK	10	10
5149943	121410*	R4 Screws 10x4 Ext Cntr Pck	2	
5149547	12217	RSS 5/16 X 2-1/2 100BX SFT	9	9
5149596	12221	RSS 5/16X3-1/8 100PC SFT PROPK	4	4
5149612	12225	RSS 5/16X4 100PC Bucket	4	4
5149620	12231	RSS 5/16X5-1/8 50PC SFT Handy	9	9
5149638	12235	RSS 5/16 X 6 50BX SFT	4	4
5149653	12287	RSS 3/8 X 8 50BX SFT HANDY	1	1
5149661	12293	RSS 3/8 X 10 50BX SFT Handy	1	1
5149679	12299	RSS 3/8 X 12 50BX SFT HANDY	2	2
5149703	14221	RSS 5/16X3-1/8 25BX HANDYPAK	5	5
5149695	14225	RSS 5/16X4 25BX HANDYPAK	10	10
5149836	14231	RSS 5/16X5-1/8 20BX HANDYPAK	5	5
5149687	14235	RSS 5/16X6 20BX HANDYPAK	5	5
3662012	16079	RT/TRIM 8 X 2-1/2 ST PROPAK	4	2
3662079	16630	WHITE RT/TRIM 8 X 2-1/2 PROPK	2	2
3661949	16730	FIN/TRIM 8 X 2-1/2 ST PROPAK	4	4
4052395	17628	WHT RT/TRIM 8 X 2 100BX HANDY	5	5
4052452	187419	T-10 Bit Yellow 2 2pk	12	12
4052460	187427	T-15 Bit Red 2 2pk	12	12
4052478	187435	T-20 Bit Purple 2 2pk	12	12
4052486	187443	T-25 Bit Green 2 2pk	12	12
5378112	187451	T-30 Bit Black 2 2pk	12	12
5378120	187459	T-40 Bit Blue 2 2pk	12	12
0623710	37079	PH RT/TRIM 8X2-1/2 HANDYPAK	5	5
4899571	61733	PHE R4 10 X 2-1/2" 305SS 80 pk	4	4
4899589	61737	PHE R4 10 X 3-1/8" 305SS 70 pk	4	4
4899613	67730	PHE Fin/Trim8X2-1/2"305SS100pk	6	6
5378229	95200	R4 Screws 10x3 1/8 Ext Cntr	2	2
5378088	96020	RSS Bulk 3/8 X 8 25/Box	50	50
5378104	96025	RSS 3/8 X 10 25/Box	50	50
4052296	96055	FIN/Trim HD 8 X 1-1/4 100/PK	6	6
4052312	96065	WH FIN/Trim HD 8 X 2-1/2 100PK	4	4
4052429	96075	WH RT Trim 8 X 2-1/2 100/PK	4	4
5378211	96089	R4 12X5-5/8", 50pk	4	4
5377999	00101**	R4 9X2-1/2 TSFH SFTPING BULK		1
5378039	00105**	R4 9X3-1/8 TSFH SFTPING BULK		1
5378047	00137**	R4 10X3-1/8 TSFH SFTPING BULK		1
2816346	10225**	RSS 5/16 X 4 SFTPING BULK		1

*NO BULK ASSORTMENT ONLY

**BULK ASSORTMENT ONLY



2FT GRK ASSORTMENT WITH BULK

2FT GRK ASSORTMENT WITH OR WITHOUT BULK

ORGILL SKU	ITEM #	DESCRIPTION	NO BULK QTY	BULK QTY
7214182	01099	R4 9X2 TSFH SFT PROPAG	2	2
7214240	01101	R4 9X 2-1/2 TSFH SFT PROPAG	4	2
7214257	01105	R4 9X 3-1/8 TSFH SFT PROPAG	4	2
7214208	01137	R4 10X3-1/8 TSFH SFT PROPAG	4	2
7214232	01141	R4 10X4 TSFH SFT PROPAG	2	2
2816395	103099	R4 9x2 110 pk	4	4
2816403	103101	R4 9 X 2-1/2 100pk	4	4
2816411	103105	R4 9 X 3-1/8 80pk	4	4
2816437	103137	R4 10 x 3-1/8 70pk	4	4
2816445	103141	R4 10x4 50pk	4	4
5149778	113079	Cabinet 8x2-1/2 100 pk	4	4
4052338	119728	FIN/Trim 8x2 100pk	6	6
4052346	119730	FIN/Trim 8x2-1/2 100 pk	6	6
4052353	119734	FIN/Trim 8x3-1/8 100 pk	6	6
5149885	120660	WH Cabinet 8X2-1/2 80PK	6	6
5149596	12221	RSS 5/16X3-1/8 100PC SFT PROPK	2	2
5149612	12225	RSS 5/16X4 100PC Bucket	4	2
5149620	12231*	RSS 5/16X5-1/8 50PC SFT Handy	9	
5149638	12235	RSS 5/16 X 6 50BX SFT	4	2
5149703	14221	RSS 5/16X3-1/8 25BX HANDYPAK	5	5
5149695	14225	RSS 5/16X4 25BX HANDYPAK	5	5
5149836	14231	RSS 5/16X5-1/8 20BX HANDYPAK	5	5
5149687	14235	RSS 5/16X6 20BX HANDYPAK	5	5
3661949	16730	FIN/TRIM 8 X 2-1/2 ST PROPAG	2	2
4052452	187419	T-10 Bit Yellow 2 2pk	12	12
4052460	187427	T-15 Bit Red 2 2pk	12	12
4052478	187435	T-20 Bit Purple 2 2pk	12	12
4052486	187443	T-25 Bit Green 2 2pk	12	12
5378112	187451	T-30 Bit Black 2 2pk	12	12
5378120	187459	T-40 Bit Blue 2 2pk	12	12
0623710	37079	PH RT/TRIM 8X2-1/2 HANDYPAK	5	5
4899555	61633	PHE R4 10 X 2-1/2" 305SS 240pk	3	3
4899563	61637	PHE R4 10 X 3 1/8" 305SS 210pk	3	3
4899613	61730	PHE Fin/Trim8X2-1/2"305SS420pk	3	3
4899571	61733	PHE R4 10 X 2-1/2" 305SS 80 pk	4	4
4899589	61737	PHE R4 10 X 3-1/8" 305SS 70 pk	4	4
4899621	62225	PHE RSS 5/16" X 4" 305SS 45 pk	4	4
0623678	67730	PHE Fin/Trim8X2-1/2"305SS100pk	6	6
4052429	96075	WH RT Trim 8 X 2-1/2 100/PK	4	4
5378211	96089	R4 12X5-5/8" , 50pk	4	4
5378039	00105	R4 #9 x 3-1/8" Bulk		1
5378047	00137	R4 #10 x 3-1/8" Bulk		1
2816346	10225	RSS 5/16" x 4" Bulk		1

*NO BULK ASSORTMENT ONLY

**BULK ASSORTMENT ONLY



GRK ROLLING RACK

ORGILL SKU	ITEM #	DESCRIPTION	QTY
7214182	01099	R4 9X2 TSFH SFT PROPAK	2
7214240	01101	R4 9X 2-1/2 TSFH SFT PROPAK	2
7214257	01105	R4 9X 3-1/8 TSFH SFT PROPAK	4
7214208	01137	R4 10X3-1/8 TSFH SFT PROPAK	2
7214232	01141	R4 10X4 TSFH SFT PROPAK	2
2816403	103101	R4 9 X 2-1/2 100pk	4
2816411	103105	R4 9 X 3-1/8 80pk	4
2816437	103137	R4 10 x 3-1/8 70pk	4
5149778	113079	Cabinet 8x2-1/2 100 pk	4
5149786	114083	Cabinet 8x3-1/8 50pk	6
4052304	119079	RT Trim 8x2-1/2 100 pk	6
4052320	119724	FIN/Trim 8x1-1/2 100 pk	6
4052338	119728	FIN/Trim 8x2 100pk	6
4052346	119730	FIN/Trim 8x2-1/2 100 pk	6
4052353	119734	FIN/Trim 8x3-1/8 100 pk	6
5149703	14221	RSS 5/16X3-1/8 25BX HANDYPAK	5
5149695	14225	RSS 5/16X4 25BX HANDYPAK	5
5149836	14231	RSS 5/16X5-1/8 20BX HANDYPAK	5
5149687	14235	RSS 5/16X6 20BX HANDYPAK	5
4052452	187419	T-10 Bit Yellow 2 2pk	12
4052460	187427	T-15 Bit Red 2 2pk	12
4052486	187443	T-25 Bit Green 2 2pk	12
5378112	187451	T-30 Bit Black 2 2pk	12
4052429	96075	WH RT Trim 8 X 2-1/2 100/PK	4



GRK DECK ELITE ROLLING RACK

ORGILL SKU	ITEM #	DESCRIPTION	QTY
2816510	10802	GRK DECK ELITE 8 X 2 700CT	2
2816502	10903	GRK DECK ELITE 9 X 3 350CT	2
151217	11137	RSS 10x3-1/8 SELF-TP PROPAK	2
5149646	12137	RSS 10 X 3-1/8 50PC HANDY PAK	10
5149612	12225	RSS 5/16X4 100PC Bucket	2
5149695	14225	RSS 5/16X4 25BX HANDYPAK	10
3661949	16730	FIN/TRIM 8 X 2-1/2 ST PROPAK	2
4052551	19158	GRK DECK ELITE 9 X 1-5/8 850CT	2
4052585	19212	GRK DECK ELITE 9 X 2-1/2 400CT	2
4052569	20903	GRK DECK ELITE 9 X 3 1050CT	2
1364546	29212	GRK DECK ELITE 9X2-1/2 1100CT	2
4052528	116724	Fin/Trim 8x1-1/2 600 pk	3
4052320	119724	FIN/Trim 8x1-1/2 100 pk	6
4052346	119730	FIN/Trim 8x2-1/2 100 pk	6
4052452	187419	T-10 Bit Yellow 2 2pk	12
4052486	187443	T-25 Bit Green 2 2pk	12
5378112	187451	T-30 Bit Black 2 2pk	12

ORGILL SKU	ITEM #	DESCRIPTION	QTY
2400182	00601	.22 CAL GREEN PWDR LOAD	12
7042278	00607	.22 CAL YELLOW PWDR LOAD	12
5253746	00652	.27 CAL GREEN STRIP LOAD	6
9274838	00667	.27 CAL YELLOW STRIP LOAD	6
3398591	00682	.27 CAL RED STRIP LOAD	6
2533693	00774	.300X1-1/2 DRV PIN 100PK	12
8259772	00780	.300X2 DRV PIN 100PK	8
5606066	00786	.300X2-1/2 DRV PIN 100PK	8
8104572	00794	.300X3 DRV PIN 100PK	6
9681321	00797	1IN DRIVE PIN WITH WASHER	8
1601574	00803	00803 - .300X1-1/2 DRV PIN W/W	6
0841486	00809	.300X2-1/2 DRV PIN W/W	6
7060114	02992	3/4X5-1/2 WDG ANCHOR 10PK	3
7174246	07886	.300X3 DRV PIN W/W 100PK	6
0151209	11247*	5/32X4-1/2 TAPCON DRL BIT	10
5407291	11248	3/16X4-1/2 TAPCON DRL BIT	10
5148572	11413	3/8 X 3 HWH TAPCON+	6
5148580	11414	3/8 X 4 HWH TAPCON+ 10 PK	4
5150032	11420	1/2 X 4 HWH TAPCON+ 10 PK	4
5148564	11491	3/16 X 7 SDS DRILL BIT	10
5148606	11492*	5/32 X 7 SDS DRILL BIT	10
5148598	11493	1/4 X 7 SDS DRILL BIT	10
2148591	12016	3/8X3-3/4 WDG/15	6
2148583	12019	1/2X5-1/2 WDG 10CT	4
4771770	12020	1/2X4-1/4 WDG ANCHOR 10CT	4
7060122	12310	5/8X5 WEDGE ANCHOR 10CT	3
7973670	12377	1/4X2-1/4 WEDGE ANCHOR 25 PK	6
4052254	16942	NEXT-GEN COBRA+ W/SILENCER	1
2120608	24292	5/16X2-1/4 HWH TAPCON+ 15PK	6
2120616	24293	5/16 X 3 HWH TAPCON+ 15PK	6
8114035	24315	1/4X1-1/4 HWH TAPCON LRG/75	6
5441977	24320	1/4X1-3/4 HWH TAPCONLRG/75	6
8129652	24330	1/4X2-3/4 HWH TAPCON LRG/75	4
2331452	28355*	3/16X1-3/4 STAR TAPCON LRG/75	6
1990977	28360*	3/16X2-1/4 STAR TAPCON LRG/75	6
8649568	28385	1/4X2-3/4 STAR TAPCON LRG/75	4
7227648	24515	1/4 X 1-1/4 HWH TAPCON LRG/225	3
7227663	24520	1/4 X 1-3/4 HWH TAPCON LRG/225	3
7227671	24530	1/4 X 2-3/4 HWH TAPCON LRG/150	3
7227739	28585	1/4X2-3/4 STAR TAP 150PK	3
2919652	40088	MASTERSHOT	4

*4FT CONCRETE ANCHORING ASSORTMENT ONLY

CONCRETE ANCHORING ASSORTMENTS

3FT & 4FT SETS



2FT CONCRETE ANCHORING ASSORTMENT



ORGILL SKU	ITEM #	DESCRIPTION	QTY
7060114	02992	Wedge Anchor 3/4" x 5-1/2" 10pk	3
6111843	03014	Wedge Anchor 3/8" x 3" 50pk	3
9922253	03041	Wedge Anchor 5/8" x 6" 10pk	3
3756756	03044	Wedge Anchor 5/8" x 7" 10pk	3
5440722	07111	A7+ 9.5 oz. Cartridge w/nozzle	6
5151410	11285	Sleeve Anchor 1/2" x 4" Hex 25pk	3
5148572	11413	Tapcon+ 3/8" x 3" Hex Head, 10pk	6
5148580	11414	Tapcon+ 3/8" x 4" Hex Head, 10pk	4
5148564	11491	Tapcon 3/16" x 7" SDS Drill Bit	10
5148606	11492	Tapcon 5/32" x 7" SDS Drill Bit	10
5148598	11493	Tapcon 1/4" x 7" SDS Drill Bit	10
4771762	12021	Wdg Ancr Ht Dip Glv 1/2" x 5-1/2" 10pc	4
7060122	12310	Wedge Anchor 5/8" x 5" 10pk	3
2807741	12370	Wedge Anchor 3/8" x 3-3/4" 50pk	3
5182134	12372	Wedge Anchor 1/2" x 4-1/4" 25pk	3
4174728	12373	Wedge Anchor 1/2" x 5-1/2" 25pk	3
2120608	24292	Tapcon+ 5/16" x 2-1/4" Hex Head, 15pk	6
2120616	24293	Tapcon+ 5/16" x 3" Hex Head, 15pk	6
7227648	24515	Tapcon 1/4" x 1-1/4" Hex Head, 225pk	3
7227663	24520	Tapcon 1/4" x 1-3/4" Hex Head, 225pk	3
7227671	24530	Tapcon 1/4" x 2-3/4" Hex Head, 150 pk	3
7227697	28550	3/16X1-1/4 STAR TAP 225PK	3
7227705	28555	3/16X1-3/4 STAR TAP 225PK	3
7227713	28560	3/16X2-1/4 STAR TAP 225PK	3
7227721	28565	3/16X2-3/4 STAR TAP 225PK	3
7227739	28585	1/4X2-3/4 STAR TAP 150PK	3
7949886	35305	Hammer Set 1/4" x 2" 50pk	4
6972350	50426	Tapcon+ 1/2" x 6" Hex Head, 2pk	8

2FT RAMSET ASSORTMENT

ORGILL SKU	ITEM #	DESCRIPTION	QTY
2400182	00601	.22 Cal Grn Load, 32cw,100 pk	12
7042278	00607	.22 Cal Yel Powder Load, 42cw,100 pk	12
5253746	00652	.27 Cal Grn Strip Load ,3RS27, 100 pk	6
9274838	00667	.27 Cal Yel Strip Load, 4RS27 , 100 pk	6
3398591	00682	.27 Cal Red Strip Load, 5RS27, 100 pk	6
5148556	00747	.300x3/4 Dr pin 1506BC, 100 pk	12
3538238	00759	.300X1 Dr Pin, 1508BC,100 pk	12
2533693	00774	.300x1-1/2 Dr Pin,1512,100 PK	12
8259772	00780	.300X2 DRV PIN 100PK	8
5606066	00786	.300x2-1/2 Dr Pin,1516,100 pk	8
8104572	00794	.300x3 Dr Pin, 1524,100 pk	6
5980974	00800	.300x1-1/4 Pin w/washer, 100 pk	8
1601574	00803	.300x1-1/2 Pin w/washer, 100 pk	6
9262825	00806	.300x2 Pin w/washer,1514SD, 100 pk	6
0841486	00809	.300x2-1/2 Pin w/washer, 1516SD, 100 pk	6
3756731	06171	1/2 " P-Point Pin, SP12, 100pk	12
7174246	07886	.300x3 Pin w/washer, 1524SDP, 100 pk	6
2656411	09167	Ramguard .300x2-1/2 Dr Pin,1516,100 pk	8
7084965	09173	Ramguard .300x2-1/2 Pin w/washer, 100 pk	6
4052254	16942	Cobra Plus .27 Cal Tool	1
2919660	40066	Trigger Shot .22 Cal Tool	4
2919652	40088	MasterShot .22 Cal Tool	4



2FT RED HEAD ASSORTMENT

ORGILL SKU	ITEM #	DESCRIPTION	QTY
7060114	02992	Wedge Anchor 3/4" x 5-1/2" 10pk	3
6111843	03014	Wedge Anchor 3/8"x 3" 50pk	3
9922253	03041	Wedge Anchor 5/8" x 6" 10pk	3
3756756	03044	Wedge Anchor 5/8" x 7" 10pk	3
5440722	07111	A7+ 9.5 oz. Cartridge w/nozzle	6
5151410	11285	Sleeve Anchor 1/2" x 4" Hex 25pk	3
4771762	12021	Wdg Ancr Ht Dip Glv 1/2" x 5-1/2" 10pc	4
7060122	12310	Wedge Anchor 5/8" x 5" 10pk	3
2807741	12370	Wedge Anchor 3/8" x 3-3/4" 50pk	3
5182134	12372	Wedge Anchor 1/2" x 4-1/4" 25pk	3
4174728	12373	Wedge Anchor 1/2" x 5-1/2" 25pk	3
7973670	12377	Wedge Anchor 1/4" x 2-1/4" 25pk	6
7949886	35305	Hammer Set 1/4" x 2" 50pk	4

ORGILL SKU	ITEM #	DESCRIPTION	QTY
0151209	11247	Tapcon 5/32" x 4-1/2" Drill Bit sgl ct	10
5407291	11248	Tapcon 3/16" x 4-1/2" Drill Bit sgl ct	10
2073021	11362	Tapcon 3/16" x 5-1/2" Drill Bit sgl ct	10
5148572	11413	Tapcon+ 3/8" x 3" Hex Head, 10pk	6
5148580	11414	Tapcon+ 3/8" x 4" Hex Head, 10pk	4
5148564	11491	Tapcon 3/16" x 7" SDS Drill Bit	10
5148606	11492	Tapcon 5/32" x 7" SDS Drill Bit	10
5148598	11493	Tapcon 1/4" x 7" SDS Drill Bit	10
9191867	24192	Tapcon+ 5/16" x 2-1/4" Hex Head, 4pk	8
9191875	24193	Tapcon+ 5/16" x 3" Hex Head, 4pk	8
2120608	24292	Tapcon+ 5/16" x 2-1/4" Hex Head, 15pk	6
2120616	24293	Tapcon+ 5/16" x 3" Hex Head, 15pk	6
2120590	24300	Tapcon 3/16" x 1-1/4" Hex Head, 75 pk	6
1006394	24301	Tapcon 1/4" x 3-1/4" Hex Head Tap- con, 75 pk	4
1006386	24305	Tapcon 3/16" x 1-3/4" Hex Head, 75 pk	6
9148941	24310	Tapcon 3/16" x 2-3/4" Hex Head, 75 pk	4
8114035	24315	Tapcon 1/4" x 1-1/4" Hex Head, 75 pk	6
5441977	24320	Tapcon 1/4" x 1-3/4" Hex Head, 75 pk	6
9672213	24325	Tapcon 1/4" x 2-1/4" Hex Head, 75 pk	4
8129652	24330	Tapcon 1/4" x 2-3/4" Hex Head, 75 pk	4
4635959	24345	Tapcon 1/4" x 4" Hex Head, 25 pk	4
2331452	28355	3/16X1-3/4 STAR TAPCON LRG/75	6
1990977	28360	3/16X2-1/4 STAR TAPCON LRG/75	6
8656688	28365	3/16X2-3/4 STAR TAPCON LRG/75	4
6755573	28375	1/4X1-3/4 STAR TAPCON LRG/75	6
0652487	28395	1/4X3-3/4 STAR TAPCON LRG/75	4
7227648	24515	Tapcon 1/4" x 1-1/4" Hex Head, 225pk	3
7227663	24520	Tapcon 1/4" x 1-3/4" Hex Head, 225pk	3
7227671	24530	Tapcon 1/4" x 2-3/4" Hex Head150pk	3
7227697	28550	3/16X1-1/4 STAR TAP 225PK	3
7227705	28555	3/16X1-3/4 STAR TAP 225PK	3
7227713	28560	3/16X2-1/4 STAR TAP 225PK	3
7227721	28565	3/16X2-3/4 STAR TAP 225PK	3
7227739	28585	1/4X2-3/4 STAR TAP 150PK	3
6972350	50426	Tapcon+ 1/2" x 6" Hex Head, 2pk	8
8673550	79013	Tapcon Pro Install Kit w Star Bit	4

2FT TAPCON ASSORTMENT



CEMENT BOARD SCREWS ROLLING RACK

ORGILL SKU	ITEM #	DESCRIPTION	QTY
8688004	23301	Rock-On 9x1-1/4 HiLo	16
1413699	23306	Rock-On 9x1-1/4 HiLo Contractor Pack	6
1413681	23311	Rock-On 9x1-5/8 HiLo	16
3635240	23401	Backer-On 10x1-1/4 Screw	16
6972236	23406	Backer-On 10x1-1/4 Screw Contractor Pack	6
6365257	23316	Rock-On 9x1-5/8 Screw	6

ORGILL SKU	ITEM #	DESCRIPTION	QTY
4052247	21308	Teks Self-Tapping 8 x 1/2" HWH/Drill Pt	6
8587941	21312	Teks Self-Tapping 8 x 3/4" HWH/Drill Pt	6
7302847	21322	Teks Self-Tapping 10 x 3/4" HWH/Drill Pt	3
0134973	21328	Teks Self-Tapping 10 x 1" HWH/Drill Pt	4
3859055	21332	Teks Self-Tapping 10 x 1-1/2" HWH/Drill Pt	4
4253746	21341	Teks Self-Tapping 12 x 1" HWH/Drill Pt	3
7879752	21348	Teks Self-Tapping 12 x 2" HWH/Drill Pt	4
0503136	21352	Teks Self-Tapping 14 x 1-1/2" HWH/Drill Pt	4
3636495	21358	Teks Self-Tapping 14 x 2-1/2" HWH/Drill Pt	3
1374099	21381	Teks ST 10 x 1-7/16" PFH/Drill Pt w/ Wing	3
3393246	21386	Teks ST 12 x 2-3/4" PFH/Drill Pt w/ Wing	3
3393238	21400	Teks Roofing 9 x 1" HWH/Sharp Pt, 120 pc	4
7060130	21401	Teks Roofing 9 x 1" HWH/Sharp Pt, 360 pc	3
6314538	21404	Teks Roofing 9 x 1-1/2" HWH/Sharp Pt, 100 pc	4
0455683	21406	Teks Roofing 9 x 1-1/2" HWH/Sharp Pt, 400 pc	3
0455675	21408	Teks Roofing 12 x 3/4" HWH/Drill Pt	4
2169001	21412	Teks Roofing 12 x 1" HWH/Drill Pt, 80 pc	4
4883922	21416	Teks Roofing 12 x 2" HWH/Drill Pt	4
7060148	21418	Teks Roofing 12 x 1" HWH/Drill Pt, 400 pc	6
7060171	21422	Teks Roofing 12 x 1-1/2" HWH/Drill Pt	3
7060197	21427	Teks Roofing 12 x 2" HWH/Drill Pt	3
6909139	21500	Teks Lath 8 x 1/2" Truss-Head/Sharp Pt	6
9026063	21504	Teks Lath 8 x 3/4" Truss-Head/Sharp Pt, 200 pc	6
0741207	21506	Teks Lath 8 x 3/4" Truss-Head/Sharp Pt, 600 pc	3
2856169	21510	Teks Lath 8 x 1" Truss-Head/Sharp Pt, 398 pc	3
5986120	21520	Teks Lath 8 x 1/2" Truss-Head/Drill Pt	6
0121475	21524	Teks Lath 8 x 3/4" Truss-Head/Drill Pt, 200 pc	6
1535822	21525	Teks Lath 8 x 3/4" Truss-Head/Drill Pt	3
3251584	21528	Teks Lath 8 x 1" Truss-Head/Drill Pt, 170 pc	6
5068978	21530	Teks Lath 8 x 1" Truss-Head/Drill Pt, 510 pc	3
5068960	21532	Teks Lath 8 x 1-1/4" Truss-Head/Drill Pt	4

2FT TEKS ASSORTMENT



TEKS ROLLING RACK

ORGILL SKU	ITEM #	DESCRIPTION	QTY
3393238	21400	21400 SCREW ROOF 9X1 DRILL PT	8
6314538	21404	21404 SCREW RF SH PNT 9X1-1/2	8
0455683	21406	21406 SCREW ROOF HWH 9X1-1/2IN	6
2169001	21412	21412 SCREW ROOF 12X1 DRILL PT	8
4883922	21416	21416 SCREW ROOF 12X2 DRILL PT	8
7060148	21418	21418 SCREW ROOF HWH NO12X1IN	6
7060171	21422	21422 SCREW ROOF HWH 12X1-1/2	6

ORGILL

4FT ORGILL BEST SELLER ASSORTMENT



ORGILL SKU	ITEM #	DESCRIPTION	QTY
2533693	00774	00774/1512 DRIVE PIN 1-1/2	12
8259772	00780	00780/1514 DRIVE PIN 2"	8
5606066	00786	00786/1516 DRIVE PIN 2.5 WSHR	8
8104572	00794	00794/1524 DRIVE PIN 3" PLAIN	6
1601574	00803	00803/1512SDDRIVE PIN 1.5 WSH	6
9262825	00806	00806/1514SD DRIVE PIN 2" WSHR	6
0841486	00809	00809/1516SDCDRIVE PIN 2.5 WS	6
5440722	07111	07111 ADHESIVE EPOXY GRY 100Z	6
7174246	07886	07886/1524SDP DRIVEPIN 3" WSHR	6
2656411	09167	09167/1516E DRIVE PIN 2.5 RAMG	8
7084965	09173	09173/1516SDE DRIVEPIN 2.5 W R	6
1705912	09176	09176/1524SDEDRIVEPIN 3" WS R	6
0151209	11247	11247 TAPCON DR BIT 5/32X4-1/2	10
5407291	11248	11248 TAPCON DR BIT 3/16X4-1/2	10
2073021	11362	11362 TAPCON DR BIT 3/16X5-1/2	10
4742706	11363	11363 TAPCON 5/32X5-1/2 DRL BT	10
5148564	11491	11491 DRILL BIT SDS 3/16X7	10
5148606	11492	11492 DRILL BIT SDS 5/32X7	10
5182134	12372	12372/11272 WEDGE ANCHOR 1/2	3
4174728	12373	12373/11273 WEDGE ANCHOR 1/2	3
4052254	16942	16942 TOOL POWDER ACTUATED COBRA	1

ORGILL SKU	ITEM #	DESCRIPTION	QTY
4052247	21308	21308 SCREW 8X1/2 HEX HEAD	6
8587941	21312	21312 SCREW 8X3/4 HEX HEAD	6
1213354	21316	21316 SCREW 8X1 HEX HEAD	6
2752962	21320	21320 SCREW 10X3/4 HEX HEAD	6
0134973	21328	21328 SCREW 10X1 HEX HEAD	4
3859055	21332	21332 SCREW 10X1-1/2 HEX SCREW	4
6395677	21336	21336 SCREW 12X3/4 HEX HEAD	4
9716358	21340	21340 SCREW 12X1 HEX HEAD	4
4253720	21344	21344 SCREW 12X1-1/2 HEX HEAD	4
7879752	21348	21348 SCREW 12X2 HEX HEAD	4
0503136	21352	21352 SCREW 14X1-1/2 HEX HEAD	4
2421634	21356	21356 SCREWS TEKS 14X2-1/2	4
1374073	21384	21384 SCREW 12X2-3/4 PLYMETAL	6
3393246	21386	21386 SCREW W/WING 12X2-3/4IN	3
3393238	21400	21400 SCREW ROOF 9X1 DRILL PT	4
6314538	21404	21404 SCREW RF SH PNT 9X1-1/2	4
2169001	21412	21412 SCREW ROOF 12X1 DRILL PT	4
4883922	21416	21416 SCREW ROOF 12X2 DRILL PT	4
9026063	21504	21504 SCREW LATHE 8X3/4 SH PT	6
0741199	21508	21508 SCREW LATHE 8X1 SHP PT	6
5986120	21520	21520 SCREW LATHE 8X1/2 DRIPT	6
0121475	21524	21524 SCREW LATHE 8X3/4 DRILPT	6
3251584	21528	21528 SCREW LATHE 8X1 DRILL PT	6
5068960	21532	21532 SCREW LATHE 8X1-1/4 DRPT	4
8992836	21536	21536 SCREW LATHE 8X1-5/8 DRPT	4
8688004	23301	23301 ROCK-ON 9X1-1/4 185CT	16
1413699	23306	23306 CEM SCREW 9X1-1/4	6
1413681	23311	23311 ROCK-ON 9X1-5/8IN	16
3635240	23401	23401 BACKER-ON #9X1-1/4	16
6972236	23406	23406/23405 CB SCREW 10X1-1/4	6
6957252	23411	23411 BACKER-ON 9X1-5/8	16
6972269	23416	23416 CEM SCRW #9X1-5/8	6
2120590	24300	24300 SCREWS 3/16X1-1/4HH 75PK	6
1006394	24301	24301 ANCHOR CNCRT 1/4X3-1/4IN	4
1006386	24305	24305 SCREWS 3/16X1-3/4HH 75PK	6
9148941	24310	24310 SCREWS 3/16X2-3/4HH75PK	4
8114035	24315	24315 SCREWS 1/4X1-1/4HH 75PK	6
5441977	24320	24320 SCREWS 1/4X1-3/4HH 75PK	6
9672213	24325	24325 SCREWS 1/4X2-1/4HH 75PK	4
8129652	24330	24330 SCREWS 1/4X2-3/4HH 75PK	4
2974004	24340	24340 SCREWS 1/4X3-3/4HH 75PK	4
1990977	28360	3/16X2-1/4 STAR TAPCON LRG/75	6
8656688	28365	3/16X2-3/4 STAR TAPCON LRG/75	4
8649568	28385	1/4X2-3/4 STAR TAPCON LRG/75	4
0652487	28395	1/4X3-3/4 STAR TAPCON LRG/75	4
7227663	24520	24520 ANCHOR CNCRT 1/4X1-3/4IN	3
7227671	24530	24530 ANCHOR CNCRT 1/4X2-3/4IN	3
7227739	28585	1/4X2-3/4 STAR TAP 150PK	3
8436750	25310	25310 EZ ANCOR PLASTIC 50PK	4
6118616	25316	25316 EZ ANCOR STUD SOLVER	6
2919660	40066	40066 TRIGGER SHOT .22 CALIBER	4
2919652	40088	40088/RS22 TRIGGER TOOL 22 CAL	4
7042278	00607	42CW YELLOW LOAD 22CAL	12
9274838	00667	4RS27 YELLOW LOAD STRIP 27CAL	6
2400182	00601	32CW GREEN LOAD 22CAL	12
5653746	00652	3RS27 GREEN LOAD STRIP 27CAL	6
3398591	00682	5RS27 RED LOAD STRIP 27CAL	6
9801895	00022	00022 HAMMER DRIVE TOOL	4

FULL-LINE CATALOG

