

---

# M~~CH~~GAN

## LADDER COMPANY



**AMERICA'S OLDEST LADDER COMPANY, SINCE 1901**

---

Supporting American Workers For Over 100 Years

**800-444-6704**

Product Catalog for Fiberglass, Wood and Aluminum Ladders and Accessories

[www.michiganladder.com](http://www.michiganladder.com)

1030903

## COMPANY PROFILE

The Michigan Ladder Company has been in the business of making quality ladders since 1901. We are the oldest ladder company in the United States. Established in Ypsilanti, Michigan on December 4, 1901 as a Michigan corporation, we still occupy the same location which is now a historical landmark. We continue to use the original building which has had more than 25 additions over the years of our successful growth.

We patented America's first automatic lock for extension ladders in 1904 and the design of the first safety platform ladder made in this country. Ladders were initially produced by hand and were peddled by horse and wagon in the immediate area. Later the boiler from a train locomotive was installed and the steam generated turned a line shaft that ran through the plant. Pulleys and flat belts transferred the power to handmade machines. The mechanized process increased production. As a result the sales area was expanded to include Detroit and the fruit growing counties of Western Michigan. By 1910 Michigan Ladder Company salesmen were covering the Eastern and Midwestern sections of the country with headquarters in New York City, Minneapolis, Kansas City, and other major cities.

The company continued to grow and prosper through product diversification and acquisitions. Prior to World War II, wood stages and scaffolds, orchard ladders, folding step stools, and laundry equipment such as ironing boards and clothes racks were produced. We also manufactured the "Kiddie Klimb", childrens play blocks, and a portable diving board for lake use.

In the early 1960's, "The Detroitier" table tennis business was purchased and we made those tables for over thirty years. The tables appeared in the movie "Forest Gump" and have been used by the Harlem Globetrotters. In 1972 the stock of the Dayton Safety Ladder Company in Cincinnati, Ohio was purchased and the two product lines were combined. Carolina Ladder Company Incorporated was acquired in 1979 to give us a presence in the South.

The manufacturing facilities of both Dayton and Carolina were eventually closed and all production moved to Michigan in the 1990's to acquire economies of scale.

We are also proud to be an American owned family business still manufacturing here in the United States. All of the products that are either manufactured or distributed by Michigan Ladder meet or exceed the requirements of the Occupational Safety and Health Administration (OSHA) and the American National Standards Institute (ANSI).

## MICHIGAN LADDER EXCLUSIVES

Our ladders have many distinct differences from those manufactured by other companies. The differences are evident in every ladder that is purchased. These differences start with the larger rivets used to assemble the fiberglass ladders, the new "Super Shoe" that protects the bottom of our fiberglass ladder to the exclusive "Silk Finish" that is put on all of the wood ladders. When rodding our wood extension ladders, we use 10 - 24 truss rods and steel truss blocks compared to our competition that uses only 10 - 24 tie rods and no truss blocks. All our ladders are made up to a quality not down to a price. The care and quality that is put into each and every ladder marks us as a cut above. When you are putting your trust into a ladder, choose "Michigan" ladders.

Because of our unique size and family atmosphere, we are able to produce any special custom type of wood ladder for which you may have a need. If you do not see what you want or need in our catalog, please give us a call.

**We still make ladders one at a time with dedicated employees who take pride in their work.**

***IF YOU DO NOT SEE WHAT YOU WANT OR NEED IN THIS CATALOG, PLEASE CALL US.  
WE HAVE THE ABILITY TO MAKE CUSTOM LADDERS!***

***No returns on special orders.***

## VALUE ADDED SERVICES

- \* America's Oldest Ladder Company
- \* Over One Hundred Years of Quality and Service
- \* Delivery by Our Own Trucks
- \* Personalized Service
- \* Quality Engineered Products
- \* Michigan Ladder Exclusive "Silk Smooth" Wood Finish
- \* Ladders are Built to Meet or Exceed Industry Standards

***Michigan Ladder Company reserves the right to change ladder design without notice!***

---

**IMPORTANT NOTICE**  
**READ ALL LABELS ON A LADDER BEFORE USE.**  
**BUY THE RIGHT LADDER FOR THE RIGHT APPLICATION.**

---



# TABLE OF CONTENTS

## MODEL TYPE PAGE

### Fiberglass Stepladders

3720	IAA.....	3
3715	IA.....	3
3717	IA.....	4
3712	I.....	4
3711	II.....	5

### Fiberglass Double Front Ladders

3801	IAA.....	5
3811	IA.....	6

### Fiberglass Platform Ladders

3803	IAA.....	6
------	----------	---

### Fiberglass Extension Ladders

3871	IAA.....	7
3861	IA.....	7
3851	I.....	8
3841	II.....	8

### Fiberglass Straight Ladders

3812	IA.....	8
------	---------	---

### Aluminum Stepladders

3320	IA.....	9
3315	I.....	9
3310	II.....	10
3300	III.....	10

### Aluminum Step Stools

3300	III.....	10
------	----------	----

### Aluminum Platform Ladders

3331	III.....	11
------	----------	----

### Aluminum Extension Ladders

3140	IA.....	11
3130	I.....	12
3120	II.....	12
3110	III.....	13

### Aluminum Straight Ladders

3240	IA.....	13
------	---------	----

### Aluminum Articulated Ladders

3458	IA.....	14
------	---------	----

### Plywood Platforms

3525	250 LB.....	14
------	-------------	----

### Aluminum Extension Planks

3450	250 LB.....	14
------	-------------	----

### Decorator Planks

3420	250 LB.....	15
------	-------------	----

### Scaffold Planks

3423, 3424, 3425		
3426, 3427	500 LB.....	15

## MODEL TYPE PAGE

### Stage Platforms

3430, 3431, 3432	750 LB.....	15
------------------	-------------	----

### Sawhorse/Work Stand

3360	300 LB.....	16
------	-------------	----

### Steel Rolling Tower Scaffold

3550	1000 LB.....	16
------	--------------	----

### Wood Double Front Ladders

1370	IA.....	17
------	---------	----

### Wood Stepladders

1320	IA.....	17
1311	I.....	18
1315	I.....	18
1200	II.....	19

### Wood Step Stool

1100	III.....	19
------	----------	----

### Wood Step Platforms

1354, 1353	I.....	20
------------	--------	----

### Attic Folding Stairs

3422	IA.....	20
------	---------	----

### Wood Extension Trestles

1745	IA.....	21
------	---------	----

### Wood Parallel Bar Trestles

1740	IA.....	21
------	---------	----

### Wood Extension Ladders

1410, 1430, 1440, 1470, 1420, 1450		
1460, 1480	IA.....	22

### Wood Straight Ladders

1510, 1530, 1560,		
1580	IA.....	23

### Tree Surgery Ladders

1761	IA.....	23
------	---------	----

### Portable Safety Ladders

322, 323, 324, 326	350 LB.....	23
--------------------	-------------	----

### Steel Rolling Ladders

Warehouse, E-Z Roll, Steel Platforms,		
Fixed, E-Z Climb & Stock Picking		24

### Accessories

Wood Extension, Singles & Trestles		25
FG & AL Extensions & Singles		25
Wood, FG & AL Stepladders		25

## FIBERGLASS STEPLADDER

### Special Duty Type IAA

Model 3720

**375 LB RATED**

Extra heavy duty extruded aluminum top with tool tray. Massive side plates with **FIVE** steel rivets on each side of the front rail.



Extra rigidity is achieved by angle bracing every step and back brace.



Extra heavy duty aluminum inside spreaders protect against damage in transport and storage.



Aluminum angle feet with thick tread on all four legs to provide better footing.

#### FEATURES:

- \*Extra Heavy Duty Aluminum Top With Tool Tray
- \*Extra Heavy Duty Inside Spreaders
- \*Extra Deep Serrated Aluminum 3-3/8" Step
- \*Double Angle Bracing On All Back Bars And Bottom And Top Steps
- \*Slip Resistant Super Shoe for Added Safety

Model No.	Size Ft.	Approx Width	Approx Spread	Approx Wt (lbs)	Approx Cu. Ft.	Approx Highest Standing Level
3720-04	4	21"	30 7/8"	19.0	3.6	1' 11"
3720-06	6	24 1/2"	44 3/4"	27.0	5.8	3' 10"
3720-08	8	28"	55 3/4"	35.6	8.4	5' 9"
3720-10	10	31 3/8"	67 7/8"	45.5	10.4	7' 7"
3720-12	12	35 1/4"	80 7/8"	56.2	13.8	9' 5"

Special duty rated ladder for extremely demanding applications. 375 pound duty rated fiberglass step ladder.

## FIBERGLASS STEPLADDER

### Extra Heavy Duty Type IA

Model 3715

**300 LB RATED**



Heavy duty extruded aluminum top with tool tray.



Back up plates reinforce all rivets on front rails and back legs.



Heavy duty inside spreaders protect against damage in transport and storage.



Heavy duty full "U" channel 3" deeply serrated aluminum steps.

#### SUPER SHOE



New polypropylene copolymer shoe for added durability and increased fiberglass rail protection at base. Thick non-marring rubber tread is bonded and secured to shoe providing greater slip-resistant footing.

#### FEATURES:

- \*Heavy Duty Aluminum Top With Tool Tray
- \*Extra Heavy Duty Inside Spreaders
- \*3" "U" Channel Serrated Aluminum Steps
- \*Double Angle Bracing On Bottom Step
- \*New Super Shoe

Model No.	Size Ft.	Approx Width	Approx Spread	Approx Wt (lbs)	Approx Cu. Ft.	Approx Highest Standing Level
3715-03	3	18"	24"	12.1	2.3	1' 0"
3715-04	4	19 3/4"	29 1/2"	15.2	3.4	1' 11"
3715-05	5	21 1/8"	34 3/4"	17.6	4.4	2' 11"
3715-06	6	22 1/2"	41"	20.4	5.6	3' 10"
3715-08	8	25 1/2"	52 3/4"	26.9	8.1	5' 8"
3715-10	10	28 1/2"	64 1/4"	34.0	10.8	7' 7"
3715-12	12	31 3/4"	76 1/2"	49.8	14.0	9' 6"

For industry, electricians and contractors. Our most popular fiberglass step ladder.



**300 LB RATED****FIBERGLASS STEPLADDER****Extra Heavy Duty Type IA****Model 3717**

Heavy duty inside spreaders protect against damage in transport and storage.

Molded top with tool slots help keep tools close at hand. Non conductive structural molded top is extremely durable and rugged and has a convenient paint can hook.



Heavy duty full "U" channel 3" deeply serrated aluminum steps. Every step is angle braced for added rigidity and strength.

**FEATURES:**

\*Heavy Duty Structural Molded Top

\*Heavy Duty Inside Spreaders To Protect Against Damage

\*3" "U" Channel Serrated Aluminum Steps

\*Double Angle Bracing On Bottom Step

Model No.	Size Ft.	Approx Width	Approx Spread	Approx Wt (lbs)	Approx Cu. Ft.	Approx Highest Standing Level
3717-03	3	18"	25 1/4"	11.8	2.3	11"
3717-04	4	19 1/2"	28 3/4"	14.5	3.4	1' 11"
3717-05	5	21"	35 1/4"	17.2	4.4	2' 11"
3717-06	6	22 1/2"	40 1/4"	19.2	5.6	3' 10"
3717-08	8	25 1/2"	52 1/4"	25.7	8.1	5' 9"
3717-10	10	28 1/2"	64 1/4"	33.8	10.8	7' 7"
3717-12	12	31 1/2"	76 5/8"	48.3	14.0	9' 5"

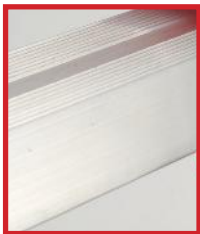
New polypropylene copolymer shoe for added durability and increased fiberglass rail protection at base and provides slip resistant footing.



For industry, electricians and contractors.

**250 LB RATED****FIBERGLASS STEPLADDER****Heavy Duty Type I****Model 3712**

Heavy gauge outside spreaders designed to prevent pinching the fingers.



Heavy duty full "U" channel 3" deeply serrated aluminum steps.



Molded top with tool slots help keep tools close at hand. Non conductive structural molded top is extremely durable and rugged and has a convenient paint can hook.

**FEATURES:**

\*Large Extruded Aluminum Top

\*Angle Bracing On Both Front And Back Of Bottom Steps

\*3" "U" Channel Serrated Aluminum Steps

\*Pinch Resistant Spreaders

\*Slip Resistant Vinyl Feet

Model No.	Size Ft.	Approx Width	Approx Spread	Approx Wt (lbs)	Approx Cu. Ft.	Approx Highest Standing Level
3712-04	4	19"	28 1/2"	12.0	2.7	1' 11"
3712-05	5	20 1/4"	34 1/2"	14.2	3.5	2' 11"
3712-06	6	21 7/8"	41"	16.6	4.4	3' 10"
3712-08	8	24 3/4"	51 7/8"	22.6	6.3	5' 9"

Thick tread on all four legs to provide better footing.



For heavy duty industrial applications where extra heavy industrial use is not required.

## FIBERGLASS STEPLADDER

### Commercial Duty Type II

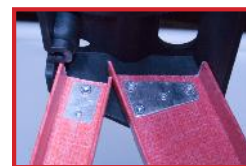
#### Model 3711

**225 LB RATED**



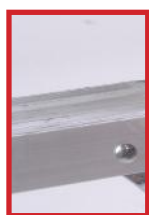
Molded top with tool slots, pipe v-groove, gallon can and quart can insert, hammer slot, drill slot all help keep tools close at hand. Non conductive structural molded top is extremely durable and rugged.

Heavy gauge galvanized plates reinforce top of rail and add additional securement to top.



Molded Pail Shelf has gallon can insert, tool holes and is self closing and opening.

Heavy gauge outside spreaders designed to stabilize ladder.



Heavy duty full "U" channel 3" deeply serrated aluminum steps provide resistance to slipping.

#### FEATURES:

- \*Structural Molded Plastic Top
- \*Full 3" Serrated Steps
- \*Angle Bracing On Bottom Front Step And Back Brace
- \*Outside Spreaders Designed To Prevent Pinching
- \*Slip Resistant Vinyl Feet

Model No.	Size Ft.	Approx Width	Approx Spread	Approx Wt (lbs)	Approx Cu. Ft.	Approx Highest Standing Level
3711-04	4	18 3/4"	27 5/8"	11.4	2.7	1' 10"
3711-05	5	20 3/8"	33 7/8"	13.2	3.5	2' 10"
3711-06	6	21 3/4"	39 1/8"	15.8	4.4	3' 9"
3711-08	8	24 3/4"	51 1/2"	20.7	6.3	5' 8"

For commercial type of applications where heavy industrial use is not required. Our most popular commercial fiberglass step ladder.

## FIBERGLASS DOUBLE FRONT STEPLADDER

### Special Duty Type IAA

#### Model 3801

**375 LB RATED**



Extra heavy duty extruded aluminum top.

Extra rigidity is achieved by angle bracing every step.



Heavy duty full "U" channel 3" deeply serrated aluminum steps.



#### SUPER SHOE



New polypropylene copolymer shoe for added durability and increased fiberglass rail protection at base. Thick non-marring rubber tread is bonded and secured to shoe providing slip-resistant footing.

#### FEATURES:

- \*Extra Heavy Duty Extruded Aluminum Top
- \*Extra Deep Serrated Aluminum 3" Step
- \*Double Angle Bracing On all Steps
- \*Rugged Side Plates For Each Rail
- \*Slip Resistant Super Shoe

Model No.	Size Ft.	Approx Width	Approx Spread	Approx Wt (lbs)	Approx Cu. Ft.	Approx Highest Standing Level
3801-03	3	19"	33"	18.0	3.7	1' 0"
3801-04	4	20 3/4"	41 3/8"	22.5	5.2	1' 11"
3801-06	6	24 1/4"	57"	32.7	8.6	3' 10"
3801-08	8	27 3/4"	72 3/8"	43.9	12.5	5' 8"
3801-10	10	31 3/8"	87 1/8"	57.5	16.9	7' 7"
3801-12	12	34 3/4"	107 3/8"	72.4	21.8	9' 5"
3801-14	14	38 1/4"	116 1/8"	94.0	23.5	11' 5"
3801-16	16	41 3/4"	136 1/4"	111.6	28.7	13' 4"

**Note: Only one person each side.**

Special duty rated ladder for extremely demanding applications. 375 pound duty rated fiberglass double step ladder for two person use.

**300 LB RATED**

## FIBERGLASS DOUBLE FRONT STEPLADDER

### Extra Heavy Duty Type IA

Model 3811



Heavy duty inside spreaders designed for heavy duty use.

Heavy duty extruded aluminum top and hinges provide stability.



Heavy duty full "U" channel 3" deeply serrated aluminum steps.

#### FEATURES:

- \*Heavy Duty Extruded Aluminum Top
- \*Heavy Duty Inside Spreaders
- \*3" "U" Channel Serrated Aluminum Steps
- \*Double Angle Bracing On Both Front And Back Steps.
- \*Slip Resistant Super Shoe

Model No.	Size Ft.	Approx Width	Approx Spread	Approx Wt (lbs)	Approx Cu. Ft.	Approx Highest Standing Level
3811-04	4	18 7/8"	37 7/8"	19.0	3.2	1' 11"
3811-06	6	21 7/8"	53"	25.6	5.3	3' 10"
3811-08	8	24 7/8"	68 1/8"	34.1	9.6	5' 9"
3811-10	10	27 3/4"	82 1/4"	44.1	13.9	7' 7"
3811-12	12	31"	98"	63.4	18.1	9' 5"

#### SUPER SHOE



New polypropylene copolymer shoe for added durability and increased fiberglass rail protection at base. Thick non-marring rubber tread is bonded and secured to shoe providing slip-resistant footing.

**Note: Only one person each side.**

Heavy duty ladder designed for two person use.



**375 LB RATED**

## FIBERGLASS PLATFORM LADDER

### Special Duty Type IAA

Model 3803



Extra heavy duty extruded aluminum platform. Has over 250 square inches of standing area and slip resistant serrated surface.

Rugged side ears with five steel rivets per side.



Heavy duty full "U" channel 3" deeply serrated aluminum steps.

#### FEATURES:

- \*Side Rails Extend Two Feet Above Platform For Safety
- \*Extra Heavy Duty Extruded Aluminum Platform
- \*Extra Deep Serrated Aluminum 3" Step
- \*Angle Bracing On All Steps And Back Bars
- \*Rugged Top Ears On Each Side

**\*NOTE: "Size" is measured to platform.**

Model No.	Size Ft.	Approx Width	Approx Spread	Approx Wt (lbs)	Approx Cu. Ft.	Approx Highest Standing Level
3803-04	4	24"	42 3/4"	26.6	5.1	3' 9"
3803-06	6	27 5/8"	55 1/4"	34.3	7.3	5' 8"
3803-08	8	31 1/8"	66 3/4"	46.8	9.8	7' 6"
3803-10	10	34 1/2"	80"	57.6	12.6	9' 5"

#### SUPER SHOE



New polypropylene copolymer shoe for added durability and increased fiberglass rail protection at base. Thick non-marring rubber tread is bonded and secured to shoe providing slip-resistant footing.

Special duty rated (375 lb.) for extremely demanding applications that require prolonged standing at one height.





## FIBERGLASS EXTENSION LADDER

### Special Duty Type IAA\*

#### Model 3871

**375 LB RATED**



"D" shaped Flat Step extruded aluminum rungs with serrated slip resistant surface and massive side plates with solid aluminum rivets.

Gravity spring assisted cast aluminum double rung lock, with zinc plated steel flipper.



Heavy duty steel free swinging self-aligning safety shoe with slip resistant vinyl tread and ice pick end.

**\*NOTE:**  
16' THROUGH 28' IS 375 LB RATED  
32' THROUGH 40' IS 300 LB RATED

Polyethylene rung sleeves separate aluminum from fiberglass to help reduce wear and ease movement of fly section.



#### FEATURES:

- \*Rungs Are Attached To Heavy Duty Plates And Riveted To Side Rail
- \*"D" Rung Construction For Comfort
- \*Gravity Spring-Assisted Rung Locks
- \*Self Aligning Shoe With Slip Resistant Tread And Steel Ice Pick End.

Model No.	Size Ft.	Approx Overlap	Max. Ext. Length	Approx Wt (lbs)	Approx Cu. Ft.	Approx Highest Standing Level
3871-16	16	3	13	43.0	9.2	10' 1"
3871-20	20	3	17	53.1	9.5	14' 1"
3871-24	24	3	21	62.0	11.5	17' 11"
3871-28	28	3	25	70.7	13.1	21' 1"
3871-32*	32	3	29	79.5	14.5	25' 8"
3871-40*	40	5	35	116.6	18.2	30' 10"

## FIBERGLASS EXTENSION LADDER

### Extra Heavy Duty Type IA\*

#### Model 3861

**300 LB RATED**



Direct crimping to rail. "D" rung for comfort while standing. Polyethylene rung sleeves separate aluminum from fiberglass to help reduce wear and ease movement of fly section.

Gravity spring assisted aluminum double rung lock, with zinc plated steel bracket.



Steel free swinging self-aligning safety shoe with slip resistant vinyl tread and ice pick end.

**\*NOTE:**  
16' THROUGH 32' IS 300 LB RATED  
36' THROUGH 40' IS 250 LB RATED

Color coded end caps identify rating of ladders on lengths up to 32' and help to protect rail end.



#### FEATURES:

- \*Direct "D" Rung Crimping To The Rail
- \*Interlocking Side Rails
- \*Gravity Spring-Assisted Rung Locks
- \*Self-Aligning Shoe With Slip Resistant Tread And Steel Ice Pick End
- \*Reinforced With Rigid Steel Supports

Model No.	Size Ft.	Approx Overlap	Max. Ext. Length	Approx Wt (lbs)	Approx Cu. Ft.	Approx Highest Standing Level
3861-16	16	3	13'	35.3	6.2	10' 1"
3861-20	20	3	17'	45.5	7.7	14' 1"
3861-24	24	3	21'	52.9	9.3	17' 11"
3861-28	28	3	25'	60.6	10.8	21' 1"
3861-32	32	3	29'	72.2	12.3	25' 0"
3861-36	36	4	32'	80.0	13.8	28' 7"
3861-40	40	5	35'	88.0	15.3	31' 10"



**250 LB RATED**

## FIBERGLASS EXTENSION LADDER

Heavy Duty Type I

Model 3851



Interlocking side rails.  
External extruded high  
strength aluminum side  
guides.

Direct crimping to rail. "D" rung  
for comfort while standing.  
Polyethylene rung sleeves separate  
aluminum from fiberglass to help  
reduce wear and ease movement of  
fly section.



Gravity spring assisted  
aluminum double rung  
lock, with zinc plated steel

Steel free swinging  
self-aligning safety  
shoe with slip resistant  
vinyl tread and ice pick  
end.



### FEATURES:

- \*Direct "D" Rung Crimping To The Rail
- \*Interlocking Side Rails
- \*Gravity Spring-Assisted Rung Locks
- \*Self-Aligning Shoe With Slip Resistant Tread And Steel Ice Pick End
- \*Reinforced With Rigid Supports

Model No.	Size Ft.	Approx Overlap	Max. Ext. Length	Approx Wt (lbs)	Approx Cu. Ft.	Approx Highest Standing Level
3851-16	16	3	13	30.5	5.6	9' 3"
3851-20	20	3	17	36.0	7.0	13' 5"
3851-24	24	3	21	48.4	8.9	17' 3"
3851-28	28	3	25	55.3	10.4	21' 1"

## FIBERGLASS EXTENSION LADDER

Commercial Duty Type II  
Model 3841

**225 LB RATED**

Extruded high  
strength aluminum  
side guides.



Direct crimping to rail. "D" rung  
for comfort while standing.  
Polyethylene rung sleeves separate  
aluminum from fiberglass to help  
reduce wear and ease movement of  
fly section.



Model No.	Size Ft.	Approx Overlap	Max. Ext. Length	Approx Wt (lbs)	Approx Cu. Ft.	Approx Highest Standing Level
3841-16	16	3'	13	28.0	5.6	9' 3"
3841-20	20	3'	17	34.0	7.0	13' 5"
3841-24	24	3'	21	46.0	8.9	17' 3"
3841-28	28	3'	25	53.0	10.4	21' 1"

## FIBERGLASS SINGLE LADDER

Extra Heavy Duty Type IA  
Model 3812

**300 LB RATED**



Direct "D" rung  
crimping to rail.



Heavy duty free swinging self-  
aligning safety shoe with slip  
resistant vinyl tread.

### FEATURES:

- \*Direct "D" Rung Crimping To The Rail
- \*Self-Aligning Shoe With Slip Resistant Tread And Steel Ice Pick End

Model No.	Size Ft.	Approx Width	Approx Length	Approx Wt (lbs)	Approx Cu. Ft.	Approx Highest Standing Level
3812-08	8	18 1/4"	8'	17.6	3.0	4' 8"
3812-10	10	18 1/4"	10'	22.8	4.0	6' 7"
3812-12	12	18 1/4"	12'	26.6	4.8	8' 6"
3812-14	14	18 1/4"	14'	29.2	5.6	10' 5"
3812-16	16	18 1/4"	16'	35.9	6.5	12' 4"
3812-20	20	18 1/4"	20'	46.0	8.7	16' 2"

## ALUMINUM STEPLADDER

### Extra Heavy Duty Type IA Model 3320

**300 LB RATED**

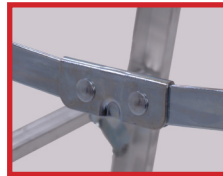
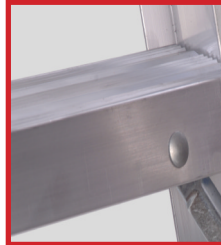


Molded ladder top with tool slots to keep tools close at hand. Made from rugged, non conductive structural polypropylene. Extremely durable and strong.



Structural molded pail shelf has a raised edge to keep items from falling.

Extra heavy duty full "U" channel 3" deeply serrated aluminum steps.



Pinch resistant spreaders are made from heavy duty plated steel with double riveted hinge to protect user from pinching fingers.

#### FEATURES:

- \*Deeply Serrated Steps Are Slip Resistant
- \*Pail Shelf For Holding Tools And Cans
- \*Large Molded Ladder Top With Tool Slots
- \*Extra Heavy Duty Slip Resistant Vinyl Feet Provide Increased Stability And Security
- \*Double Angle Bracing On Bottom Steps
- \*Full "U" Channelled 3" Serrated Steps

Model No.	Size Ft.	Approx Width	Approx Spread	Approx Wt (lbs)	Approx Cu. Ft.	Approx Highest Standing Level
3320-04	4	18 7/8"	28 1/4"	12.9	3.3	1' 11"
3320-06	6	21 5/8"	40"	16.9	5.7	3' 10"
3320-08	8	24 1/2"	52"	21	7.1	5' 9"
3320-10	10	27 5/8"	63 1/2"	28.4	8.7	7' 7"

## ALUMINUM STEPLADDER

### Heavy Duty Type I Model 3315

**250 LB RATED**



Molded ladder top with tool slots to keep tools close at hand. Made from rugged, non conductive structural polypropylene. Extremely durable and strong.

Extra heavy duty full "U" channel 3" deeply serrated aluminum steps.

Pinch resistant spreaders are made from heavy duty plated steel with double riveted hinge to protect user from pinching fingers.



Aluminum angle feet with thick tread on legs to provide better footing. Feet can be replaced.



#### FEATURES:

- \*Deeply Serrated Steps Are Slip Resistant
- \*Pail Shelf For Holding Tools And Cans
- \*Large Molded Ladder Top With Tool Slots
- \*Extra Heavy Duty Slip Resistant Vinyl Feet Provide Increased Stability And Security
- \*Double Angle Bracing On Bottom Steps
- \*Full "U" Channelled 3" Serrated Steps

Model No.	Size Ft.	Approx Width	Approx Spread	Approx Wt (lbs)	Approx Cu. Ft.	Approx Highest Standing Level
3315-04	4	18 3/4"	30 3/4"	10.5	3.2	1' 11"
3315-06	6	21 3/4"	43 1/2"	15.1	5.5	3' 10"
3315-08	8	24 3/4"	55"	19.6	8.3	5' 9"

**225 LB RATED**

## ALUMINUM STEPLADDER Commercial Duty Type II Model 3310



Aluminum pail shelf with tool holders. Shelf has tool holes and accommodates all sizes of paint cans

Molded top with tool slots. Made from rugged, structural polypropylene. Has pipe V-slot, gallon and quart can insets, drill gun hole and hammer hole.



Pinch resistant spreaders are made from heavy duty plated steel with double riveted hinge to protect user from pinching fingers.



### FEATURES:

- \*Deeply Serrated Steps Are Slip Resistant
- \*Pail Shelf For Holding Tools And Cans
- \*Large Molded Ladder Top With Tool Slots
- \*Extra Heavy Duty Slip Resistant Vinyl Feet Provide Increased Stability And Security
- \*Double Angle Bracing On Bottom Steps
- \* Full "U" Channelled 3" Serrated Steps

Model No.	Size Ft.	Approx Width	Approx Spread	Approx Wt (lbs)	Approx Cu. Ft.	Approx Highest Standing Level
3310-04	4	17 7/8"	28 1/2"	10.7	3.0	1' 11"
3310-05	5	19 5/8"	36"	10.9	4.1	2' 11"
3310-06	6	20 1/8"	39 1/2"	11.2	5.1	3' 10"
3310-08	8	23 1/8"	51"	17.6	7.8	5' 9"
3310-10	10	27 1/2"	62 1/2"	25.2	11.5	7' 7"

Molded feet with thick tread on legs to provide better footing. Feet can be replaced.



**200 LB RATED**

## ALUMINUM STEPLADDER Household Duty Type III Model 3300



Aluminum pail shelf with tool holders. Shelf has tool holes and accommodates all sizes of paint cans

Molded top with tool slots. Made from rugged, structural polypropylene. Has pipe V-slot, gallon and quart can insets, drill gun hole and hammer hole.



Pinch resistant spreaders are made from heavy duty plated steel with double riveted hinge to protect user from pinching fingers.



### FEATURES:

- \*Deeply Serrated Steps Are Slip Resistant
- \*Pail Shelf For Holding Tools And Cans
- \*Large Molded Ladder Top With Tool Slots
- \*Heavy Duty Slip Resistant Vinyl Feet Provide Increased Stability And Security
- \*Double Angle Bracing On Bottom Steps
- \*Full "U" Channelled 3" Serrated Steps

Model No.	Size Ft.	Approx Width	Approx Spread	Approx Wt (lbs)	Approx Cu. Ft.	Approx Highest Standing Level
3300-02	2	15 1/4"	17 1/8"	5.3	1.3	2' 1"
3300-04	4	17 7/8"	29 3/4"	9.5	2.2	1' 11"
3300-05	5	19 1/4"	32 3/4"	10.1	2.9	2' 10"
3300-06	6	20 5/8"	41 3/8"	13.1	3.6	3' 10"

Molded feet with thick tread on legs to provide better footing. Feet can be replaced.





## ALUMINUM HOUSEHOLD PLATFORM LADDER Household Duty Type III Model 3331

**200 LB RATED**



12" X 14" Extra large standing platform provides for more comfort and maneuverability.



Extra large self closing pail shelf provides room for tools and pails.

All four legs have thick rubber feet for improved resistance to sliding and provides protection for the aluminum legs.



The aluminum platform ladder folds for compact storage and the aluminum construction provides for light weight and easy maneuverability.

### FEATURES:

- \* Tubular Aluminum Side Rails
- \* Embossed Pail Holder With Rag Rail And Convenient Tool Holders
- \* Ladder Automatically Folds For Easy Storage And Transport
- \* Large Slip-Resistant Aluminum Platform
- \* Thick Rubber Feet For Resistance To Sliding

Model No.	Size Ft.	Platform Height	Total Height	Approx Wt (lbs)	Approx Cu. Ft.	Approx Highest Standing Level
3331-04	4 1/2	22"	4' 2"	8.3	1.7	1' 10"
3331-05	5 1/2	33"	5' 1"	10.0	2.2	2' 9"

## ALUMINUM EXTENSION LADDER Extra Heavy Duty Type IA Model 3140

**300 LB RATED**



1-5/8" "D" rungs provide comfort and security. Serrations provide slip resistance.

Double rung, heavy duty aluminum gravity rung locks.



Aluminum and nylon pulley with polypropylene rope.



Heavy duty free swinging self-aligning aluminum shoe with slip resistant vinyl tread.

### FEATURES:

- \* Spring Assisted Heavy Duty Cast Gravity Rung Locks
- \* Self -Aligning Shoe With Slip Resistant Tread And Steel Ice Pick Plate
- \* 3" I-Beam Channel Rails
- \* External Rail Guides

Model No.	Size Ft.	Approx Overlap	Max. Ext. Length	Approx Wt (lbs)	Approx Cu. Ft.	Approx Highest Standing Level
3140-16	16	3'	13'	30.0	6.3	10' 1"
3140-20	20	3'	17'	37.0	7.8	14' 1"
3140-24	24	3'	21'	42.0	9.4	17' 11"
3140-28	28	3'	25'	55.0	10.9	21' 9"
3140-32	32	3'	29'	62.0	12.5	25' 8"
3140-40	40	5'	35'	82.0	15.6	31' 6"

**250 LB RATED**

## ALUMINUM EXTENSION LADDER Heavy Duty Type I Model 3130



Double rung, heavy duty aluminum gravity rung locks.

1-5/8" "D" rungs provide comfort and security. Serrations provide slip resistance.



### FEATURES:

- \*Spring Assisted Heavy Duty Gravity Rung Locks
- \*Self-Aligning Shoe With Slip Resistant Tread And Steel Ice Pick Plate
- \*3" I-Beam Channel Rails
- \*Internal Rail Guides For Smooth Operation

Model No.	Size Ft.	Approx Overlap	Max. Ext. Length	Approx Wt (lbs)	Approx Cu. Ft.	Approx Highest Standing Level
3130-16	16	3'	16'	27.0	5.9	10' 1"
3130-20	20	3'	17'	33.0	7.3	14' 1"
3130-24	24	3'	21'	39.0	8.8	17' 11"
3130-28	28	3'	25'	53.0	10.2	21' 9"
3130-32	32	3'	29'	60.0	11.6	25' 8"
3130-40	40	5'	35'	81.0	14.4	31' 6"



Aluminum and nylon pulley with yellow polypropylene rope.

Heavy duty free swinging self-aligning aluminum shoe with slip resistant vinyl tread.



**225 LB RATED**

## ALUMINUM EXTENSION LADDER Commercial Duty Type II Model 3120



Double rung, heavy duty aluminum gravity rung locks.



Color coded end caps for easy identification of duty rating.

1-5/8" "D" rungs provide comfort and security.



### FEATURES:

- \*Spring Assisted Heavy Duty Gravity Rung Locks
- \*Self-Aligning Shoe With Slip Resistant Tread
- \*Rungs Are Attached To 2 3/4" - 3" Modified I Beam With Interlocking Rails
- \*Outside Width at The Base is 18-1/2" With An Inside Width Base: 14" Outside Fly: 16-1/8"

Model No.	Size Ft.	Approx Overlap	Max. Ext. Length	Approx Wt (lbs)	Approx Cu. Ft.	Approx Highest Standing Level
3120-16	16	3'	13'	28.0	6.0	10' 1"
3120-20	20	3'	17'	34.2	7.4	14' 1"
3120-24	24	3'	21'	40.3	8.9	17' 3"
3120-28	28	3'	25'	46.5	10.4	21' 9"
3120-32	32	3'	29'	57.0	11.9	25' 8"
3120-40	40	5'	35'	80.0	14.7	31' 6"



Aluminum and nylon pulley with yellow polypropylene rope.

Heavy duty free swinging self-aligning aluminum shoe with slip resistant vinyl tread.



## ALUMINUM EXTENSION LADDER

Household Duty Type III  
Model 3110

**200 LB RATED**



Color coded end caps for easy identification of duty rating.

Double rung, heavy duty aluminum gravity rung locks.



Aluminum and nylon pulley with yellow polypropylene rope.



1-5/8" "D" rungs provide comfort and security. Serrations provide slip resistance.

Heavy duty free swinging self-aligning aluminum shoe with slip resistant vinyl tread.



### FEATURES:

- \*Spring Assisted Rung Locks
- \*Quality Aluminum Extension Ladder Has Interlocking 3" Deep Rails
- \*Mar And Impact Resistant Tops
- \*A Quality Extension Ladder When Compared To Others
- \*Very Strong And Yet Light Weight

Model No.	Size Ft.	Approx Overlap	Max. Ext. Length	Approx Wt (lbs)	Approx Cu. Ft.	Approx Highest Standing Level
3110-16	16	3'	13'	19.0	5.7	10' 1"
3110-20	20	3'	17'	24.1	6.4	14' 1"
3110-24	24	3'	21'	34.4	8.5	17' 11"

## ALUMINUM SINGLE LADDER

Extra Heavy Duty Type IA  
Model 3240

**300 LB RATED**



3" full "I" beam rails engineered for heavy duty use as well as "D" shaped rungs for safer standing surface.



Heavy duty free swinging self-aligning aluminum shoe with slip resistant vinyl tread and safety spike.

### FEATURES:

- \*Wide 3" x 1-1/8" Side Rails
- \*"D" Shaped 1-5/8" Rungs
- \*Mar And Impact Resistant End Caps
- \*Very Strong When Compared To Other Single Ladders
- \*Light weight
- \*Heavy Duty Free Swinging Show Has built In Ice Pick

Model No.	Size Ft.	Max. Length	Approx Wt (lbs)	Approx Cu. Ft.	Approx Highest Standing Level
3240-08	08	8'	16.5	3.4	5' 4"
3240-10	10	10'	20.0	4.3	7' 3"
3240-12	12	12'	23.6	5.1	9' 2"
3240-14	14	14'	30.7	6.1	11' 2"
3240-16	16	16'	34.8	7.0	13' 1"
3240-20	20	20'	46.2	8.7	16' 11"



# ALUMINUM ARTICULATED LADDER Extra Heavy Duty Type IA Model 3456



Patented one hand release rod makes it the fastest/easiest ladder to set up and to use. The 300 pound rating offers extra security.

12 Ladders in One

## FEATURES:

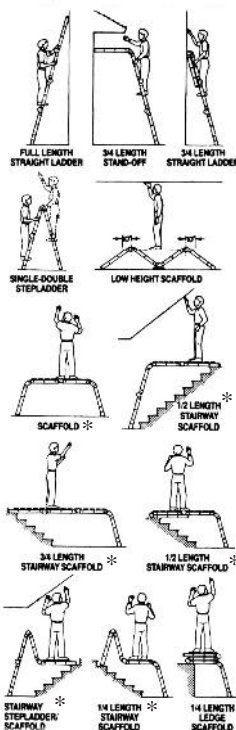
- \*Patented Single Hand Hinge Release Rod
- \*Box Channel Side Rails For Comfort And Strength
- \*Widest Support Bar In The Industry
- \*300 Lb. Rated, Also With Accessories

## LADDERS

Model No.	Size Ft.	Folded Length	Max. Ext. Length	Approx Wt (lbs)	Approx Cu. Ft.	Approx Highest Standing Level
3458-12	12.5	41' 3/4"	12' 6"	32.0	3.7	8' 05"
3458-16	16.5	53' 1/2"	16' 7"	42.0	4.7	12' 5"

## ACCESSORIES

Model No.	Ladder Size	Pc's Per Box	Total Lgth Ea.	Approx Wt (lbs)	Approx Cu. Ft.	Fits Model
3458-30	12.5'	2 ea	32" x 12"	12.0	.63	3458-12
3458-40	16.5'	2 ea	43" x 12"	15.0	.83	3458-18
3458-20	Both	1 ea	39"	4.0	.75	3458-12 & 16
3458-50	Both	1 ea	18" x 12"	7.0	.84	3458-12 & 16



\* Use Scaffold Board Accessory in these applications.

## ACCESSORIES

SCAFFOLD BOARDS -  
Non Slip Surface 9-Ply Baltic Birch

\* 3458-30 Scaffold Board Set to Fit the 3456-12



\* 3458-40 Scaffold Board Set to Fit the 3456-16



## 2 IN 1 PLATFORM/SHELF

\* 3457-50 2 IN 1 can be used as a standing platform or as a shelf for tools, paint, etc.



## WORK PLATFORMS PLYWOOD DECK Model 3525



Aluminum extrusion protects edges of exterior grade plywood deck. Deck can be easily replaced. Heavy duty hook reinforcement plates help withstand heavy loads. Offset hooks allow in line installation.

MEETS OR EXCEEDS OSHA REQUIREMENTS

Model No.	Width Inches	Length Feet	Approx Rail Size	Approx Wt (lbs)	Approx Cu. Ft.	Duty Rating lbs
3525-07	19 1/8"	7	3"	25.1	3.5	250
3525-10	19 1/8"	10	3"	35.0	4.8	250

## ALUMINUM EXTENSION PLANKS Model 3450



The heavy gauge structural aluminum tubing provides for a durable surface on which to work and helps to prevent twisting. Has slip resistant surface and is easy to extend and retract for quick set up and convenient storage.

MEETS OR EXCEEDS OSHA REQUIREMENTS

Model No.	Width Inches	Extension Length	Approx Wt (lbs)	Approx Cu. Ft.	Duty Rating lbs
3450-06	12"	6' to 9'	30	1.5	250
3450-08	12"	8' to 13'	40	2.0	250
3450-10	12"	10' to 16'	50	2.5	250

# SCAFFOLD & DECORATOR PLANKS AND STAGE PLATFORMS

## FEATURES:

- \*Rugged Design For Prolonged Use
- \*Raised And Abraded Decking Assures Slip Resistant Surface, Prevents Material Build-Up
- \*Rungs Located On 12" Centers For Extra Strength
- \*Meets Or Exceeds OSHA And ANSI Requirements
- \*New Safety Yellow Polypropylene Molded Handles
- \*Easy Grip Rungs Provided On Each End For Easy Pulling Or Carrying
- \*Handrail And Toe Board Systems Are Available On Request

## DECORATOR PLANK-1 MAN-250 LB RATED

Model No.	Width Inches	Length Feet	Depth Inches	Approx Wt (lbs)	Approx Cu. Ft.	Duty Rating lbs
3420-08	12	8	4"	21.0	3.3	250
3420-12	12	12	4"	34.0	4.5	250
3420-16	12	16	4"	47.0	5.6	250
3420-20	12	20	5"	63.0	8.3	250
3420-24	12	24	5"	76.0	10.0	250

## SCAFFOLD PLANK-2 MAN-500 LB RATED

Model No.	Width Inches	Length Feet	Depth Inches	Approx Wt (lbs)	Approx Cu. Ft.	Duty Rating lbs
3423-12	12	12	4"	37.0	4.2	500
3423-16	12	16	5"	52.0	6.7	500
3423-20	12	20	6"	81.0	10.4	500
3423-24	12	24	6"	96.0	12.4	500
3423-28	12	28	6"	123.0	14.3	500
3423-30	12	30	6"	132.0	15.0	500
3423-32	12	32	6"	141.0	18.0	500

## SCAFFOLD PLANK-2 MAN-500 LB RATED

Model No.	Width Inches	Length Feet	Depth Inches	Approx Wt (lbs)	Approx Cu. Ft.	Duty Rating lbs
3424-12	14	12	4"	39.0	4.9	500
3424-16	14	16	5"	55.0	8.3	500
3424-20	14	20	6"	85.0	11.8	500
3424-24	14	24	6"	101.0	14.3	500
3424-28	14	28	6"	129.0	16.3	500
3424-30	14	30	6"	138.0	17.5	500
3424-32	14	32	6"	147.0	18.7	500

## SCAFFOLD PLANK-2 MAN-500 LB RATED

Model No.	Width Inches	Length Feet	Depth Inches	Approx Wt (lbs)	Approx Cu. Ft.	Duty Rating lbs
3425-12	20	12	4"	45.0	6.7	500
3425-16	20	16	5"	65.0	11.8	500
3425-20	20	20	6"	97.0	16.7	500
3425-24	20	24	6"	114.0	20.8	500
3425-28	20	28	6"	145.0	23.3	500
3425-30	20	30	6"	155.0	25.0	500
3425-32	20	32	6"	165.0	27.7	500

## SCAFFOLD PLANK-2 MAN-500 LB RATED

Model No.	Width Inches	Length Feet	Depth Inches	Approx Wt (lbs)	Approx Cu. Ft.	Duty Rating lbs
3426-12	24	12	4"	49.0	8.0	500
3426-16	24	16	5"	71.0	13.3	500
3426-20	24	20	6"	103.0	20.0	500
3426-24	24	24	6"	122.0	24.0	500
3426-28	24	28	6"	155.0	28.0	500
3426-30	24	30	6"	166.0	30.0	500
3426-32	24	32	6"	177.0	32.0	500



New safety yellow polypropylene molded handles are impact resistant and designed for durability and easy transportation.



The easy grip rungs provided on each end allows for easy pulling and carrying.



Rungs located on 12" centers for extra strength. The larger planks have lower rungs to prevent racking and buckling. These rungs also provide for a greater load bearing area.

## SCAFFOLD PLANK-2 MAN-500 LB RATED

Model No.	Width Inches	Length Feet	Depth Inches	Approx Wt (lbs)	Approx Cu. Ft.	Duty Rating lbs
3427-12	28	12	4"	54.0	9.8	500
3427-16	28	16	5"	78.0	12.4	500
3427-20	28	20	6"	114.0	23.3	500
3427-24	28	24	6"	135.0	28.0	500
3427-28	28	28	6"	170.0	32.7	500
3427-30	28	30	6"	180.0	35.0	500
3427-32	28	32	6"	192.0	37.3	500

## STAGE PLATFORM-3 MAN-750 LB RATED

Model No.	Width Inches	Length Feet	Depth Inches	Approx Wt (lbs)	Approx Cu. Ft.	Duty Rating lbs
3430-16	20	16	6"	86.0	13.3	750
3430-20	20	20	6"	105.0	16.7	750
3430-24	20	24	6"	125.0	20.0	750
3430-28	20	28	7"	179.0	27.2	750
3430-30	20	30	7"	219.0	29.2	750
3430-32	20	32	7"	233.0	31.1	750
3430-36	20	36	7"	261.0	35.0	750
3430-40	20	40	7"	319.0	38.9	750

## STAGE PLATFORM-3 MAN-750 LB RATED

Model No.	Width Inches	Length Feet	Depth Inches	Approx Wt (lbs)	Approx Cu. Ft.	Duty Rating lbs
3431-16	24	16	6"	90.0	16.0	750
3431-20	24	20	6"	111.0	20.0	750
3431-24	24	24	6"	133.0	24.0	750
3431-28	24	28	7"	188.0	32.7	750
3431-30	24	30	7"	228.0	35.0	750
3431-32	24	32	7"	243.0	37.3	750
3431-36	24	36	7"	273.0	42.0	750
3431-40	24	40	7"	333.0	46.7	750

## STAGE PLATFORM-3 MAN-750 LB RATED

Model No.	Width Inches	Length Feet	Depth Inches	Approx Wt (lbs)	Approx Cu. Ft.	Duty Rating lbs
3432-16	28	16	6"	100.0	18.7	750
3432-20	28	20	6"	121.0	23.3	750
3432-24	28	24	6"	145.0	28.0	750
3432-28	28	28	7"	206.0	38.1	750
3432-30	28	30	7"	216.0	40.8	750
3432-32	28	32	7"	262.0	43.6	750
3432-36	28	36	7"	294.0	49.0	750
3432-40	28	40	7"	356.0	54.4	750

**STOCKED ITEMS**

**300 LB RATED**

## SAWHORSE/WORK STAND

Model 336002, 336003, 336004



The saw horses can be used in pairs with extension planks or with platforms and scaffold planks.

### FEATURES:

- \*Double Top Steps Provide An Extra Wide Top
- \*Solid Rivet Construction
- \*Heavy-Duty Spreader For Long Trouble Free Use
- \*Ideal For Use With Aluminum Extension Planks
- \*Durable PVC Non-Slip Feet

Model No.	Size Ft.	Approx Width	Approx Spread	Approx Wt (lbs)	Approx Cu. Ft.	Approx Highest Standing Level
336002	2	30"	21"	10.0	2.5	2'
336003	3	30"	29"	15.0	3.75	3'
336004	4	30"	36"	20.0	5.0	4'

**1000 LB RATED**

## 6 FT. STEEL ROLLING TOWER SCAFFOLD

Model 355000, 355010, 355020, 355030



The Guard Rail System is easy to install and is designed to stay at the platform level when elevated or lowered. Includes toe boards. OSHA regulations require guard rails on platforms that are 10' or higher in elevation.

5" Two way pinned locking casters are dependable and allows easy movement of scaffolding. Casters are purchased and price as a set of four. Caster can be used on the outriggers.



The scaffold end frames are 26 1/2" wide and 6' high allowing it to fit through most doorways. The 6 rungs are spaced 12" on center allowing for ease of climbing. The frames are powdered coated to help resist heavy wear and tear. The 5/8" thick plywood deck has centered located hand holes for ease of assembly.



Outriggers are powdered coated, same as the scaffolding and are packaged four per set. The 18" outriggers adds 30" to the foot print of the scaffolding allowing for extended height.

6" Steel Rolling Scaffolds can be stacked three high when using the outriggers on each corner and Guard Rail Kit. Use the wheels from the second Rolling Scaffold on the outriggers. This is still within OSHA's regulations.



### FEATURES:

- \*Quick Assembly And Adjustment
- \*Locking Truss Pins
- \*Load Capacity To 1000 lbs
- \*4 Stage Powder Coated Finish
- \*5/8" Locking Plywood Deck With Hand Holes
- \*5" Two Way Pinned Locking Casters
- \*Maximum Platform Height, 18' With Outriggers.

Model No.	Description	Size Ft.	Load Capacity	Approx Wt (lbs)	Approx Cu. Ft.
355000	6' Steel Scaffold	6'	1000 lbs	148.0	9.2
355010	Guard Rail Kit	n/a	N/A	86.0	7.8
355020	Out Riggers (4)	n/a	1000 lbs	19.0	3.4
355030	Casters (4)	n/a	1000 lbs	6.2	1.25



**300LB RATED**

## WOOD DOUBLE FRONT STEPLADDER- TRADERMAN Extra Heavy Duty Type IA Model 1370



Extra heavy duty spreaders.

Exclusive galvanized steel wrap-around top irons protect top of ladder from damage caused by dragging and provides a metal to metal hinge for greater strength and durability.



Heavy duty angle bracing with additional bracing on 6' size and larger.



**Note: Only one person each side.**

An extra heavy duty two man ladder that has wide steps on both front and back. Ideal for plumbers, movers and mill workers.



**SAFETY  
GROOVED  
STEPS**

**SAFETY SHOES  
ATTACHED UPON  
REQUEST**

### FEATURES:

- \*Strong Southern Yellow Pine Construction
- \*Heavy Duty Wrap Around Top Irons
- \*Metal To Metal Hinge For Strength And Durability
- \*Heavy Duty Angle Bracing-Additional Braces On 6' Size And Longer
- \*Easy Entry From Either Side
- \*Exclusive Michigan Ladder Silk Finish
- \*One Person Can Work From Each Side

Model No.	Size Ft.	Approx Width	Approx Spread	Approx Wt (lbs)	Approx Cu. Ft.	Approx Highest Standing Level
1370-02	2	19 1/2"	22 1/2"	13.4	1.6	1' 10"
1370-04	4	19 3/8"	37"	24.3	3.6	1' 10"
1370-06	6	22 1/2"	52 3/4"	37.1	5.9	3' 8"
1370-08	8	28 3/8"	70 1/8"	50.0	9.0	5' 7"

### MODEL 1370-02 STEP STOOL

#### FEATURES:

- \*Strong Southern Yellow Pine Construction
- \*Heavy Duty Outside "U" Hinge
- \*Safety Grooved Steps With Heavy Duty Rods
- \*Height To Top Step - 22"
- \*Exclusive Michigan Ladder Silk Finish

**STEPS ON BOTH SIDES**



**300LB RATED**

## WOOD STEPLADDER TRADERMAN Extra Heavy Duty Type IA Model 1320



Extra heavy duty pinch resistant spreaders are inside on 3' to 6' ladders.



Exclusive wrap-around top irons protect top of ladder from damage caused by dragging and provides a metal to metal hinge for strength and durability.

### FEATURES:

- \*Strong Southern Yellow Pine Construction
- \*Heavy Duty Wrap Around Top Irons
- \*Metal To Metal Hinge For Strength And Durability
- \*Heavy Duty Angle Bracing-Additional Braces On 6' Size And Longer
- \*Spreaders On Inside 3'-6', Outside 8' And Longer
- \*Exclusive Michigan Ladder Silk Finish

Model No.	Size Ft.	Approx Width	Approx Spread	Approx Wt (lbs)	Approx Cu. Ft.	Approx Highest Standing Level
1320-03	3	17 3/4"	24 1/8"	15.3	2.2	10"
1320-04	4	19 3/8"	30 3/4"	21.2	3.1	1' 10"
1320-05	5	21"	37 3/8"	26.6	4.1	2' 9"
1320-06	6	22 1/2"	43 5/8"	31.9	5.1	3' 8"
1320-08	8	25 1/4"	56 3/4"	41.2	7.3	5' 7"
1320-10	10	28 5/8"	70"	52.0	9.9	7' 5"
1320-12	12	31 3/4"	82 7/8"	61.6	12.7	9' 6"
1320-14	14	34 3/4"	96 1/2"	71.4	15.7	11' 5"
1320-16	16	37 1/2"	110 1/2"	81.6	19.0	13' 4"



Heavy duty angle bracing with additional bracing on 6' size and larger.

**FIELD MOUNT  
PAIL SHELF  
AVAILABLE**



**SAFETY  
GROOVED  
STEPS**

**SAFETY SHOES  
ATTACHED UPON  
REQUEST**

One of our heaviest duty ratings and most durable wood stepladders in our line. Ideal for mill work, construction trades and your most demanding jobs.

**FIELD MOUNT  
PAIL SHELF  
AVAILABLE**

## WOOD STEPLADDER STOCKY Heavy Duty Type I Model 1311

**250 LB RATED**



**SAFETY  
GROOVED  
STEPS**

**SAFETY SHOES  
ATTACHED UPON  
REQUEST**

Our very popular 250 lb. rated ladder that combines light weight, strength and durability at an economical price.



Exclusive wrap-around top irons protect top of ladder from damage caused by dragging and provides a metal to metal hinge for strength and durability.

Extra heavy duty pinch resistant spreaders are inside on 3' to 6' ladders and outside on 8' and longer.



Heavy duty angle bracing with additional bracing on 6' size and larger.

### FEATURES:

- \*Strong Southern Yellow Pine Construction
- \*Heavy Duty Wrap Around Top Irons
- \*Metal To Metal Hinge For Strength And Durability
- \*Heavy Duty Angle Bracing-Additional Braces On 6' Size And Longer
- \*Strong Yet Lightweight Front And Back Legs
- \*Exclusive Michigan Ladder Silk Finish

Model No.	Size Ft.	Approx Width	Approx Spread	Approx Wt (lbs)	Approx Cu. Ft.	Approx Highest Standing Level
1311-02	2	15 3/8"	17 1/4"	8.5	1.4	1' 11"
1311-03	3	16 3/8"	18 7/8"	13.1	2.1	11"
1311-04	4	18 7/8"	30 1/2"	17.4	3.1	1' 10"
1311-05	5	20 3/8"	39 5/8"	22.1	4.0	2' 9"
1311-06	6	22"	47 3/8"	25.8	5.0	3' 8"
1311-08	8	24 3/4"	56 3/4"	35.4	7.2	5' 7"
1311-10	10	28"	70"	45.0	9.7	7' 5"
1311-12	12	31 1/8"	82 3/4"	57.2	12.5	9' 6"

## WOOD STEPLADDER PAINTERS Heavy Duty Type I Model 1315

**250 LB RATED**



**SAFETY  
GROOVED  
STEPS**

**SAFETY SHOES  
ATTACHED UPON  
REQUEST**

Our popular 250 lb. rated Painters ladder that combines light weight and strength. Perfect for the painter.



Extra heavy gauge steel hinges are used to secure both section of the ladder and provides a metal to metal hinge for strength and durability.

Extra heavy duty pinch resistant spreaders are inside on 3' to 6' ladders and outside on 8' and longer.



Heavy duty angle bracing with additional bracing on 6' size and larger.

### FEATURES:

- \*Strong Southern Yellow Pine Construction
- \*Metal To Metal Hinge For Strength And Durability
- \*Heavy Duty Angle Bracing-Additional Braces On 6' Size And Longer
- \*Strong Yet Lightweight Front And Back Legs

Model No.	Size Ft.	Approx Width	Approx Spread	Approx Wt (lbs)	Approx Cu. Ft.	Approx Highest Standing Level
1315-04	4	21 1/2"	32 1/2"	17.8	3.1	1' 10"
1315-05	5	20"	38 1/2"	22.6	4.0	2' 9"
1315-06	6	24 3/4"	45"	26.9	5.0	3' 8"
1315-08	8	28"	57 1/2"	36.0	7.2	5' 7"

**225 LB RATED**

## WOOD STEPLADDER Commercial Duty Type II Model 1200



Back bars are rod locked and the ends are covered with a metal cap for full protection.



Southern yellow pine top increases stability, extra heavy 20 gauge galvanized top cap ears.



Pail shelf has additional locking spreaders for extra support to the ladder.

## WOOD STEPSTOOL Household Duty Type III Model 1100-02

**200 LB RATED**



Special extra wide step stool for stability.



Our finest in commercial ladders. Quality built to a standard, not down to a price.

### FEATURES:

- \*Solid Pine Top Helps Eliminate Racking
- \*Rodded Back Bars Provide "Locked-in-Joint"

Model No.	Size Ft.	Approx Width	Approx Spread	Approx Wt (lbs)	Approx Cu. Ft.	Approx Highest Standing Level
1100-02	2	17"	18 1/2"	7.8	1.2	1'10"
1200-04	4	17 1/4"	29"	14.6	2.9	1'10"
1200-05	5	19"	33 3/4"	17.9	4.0	2'9"
1200-06	6	20 1/2"	41 1/4"	20.6	5.2	3'9"
1200-08	8	23 3/4"	55 1/4"	30.5	7.0	5'7"

## Benefits of Our Wood Ladders

- \* Wood Is Non-Conductive When Dry
- \* America's Renewable Resource
- \* Sturdier Under Foot Than Fiberglass Or Aluminum Ladders
- \* Time Tested Design And Materials
- \* Warmer To The Touch In The Cold Weather
- \* Cooler To The Touch In The Hot Weather
- \* Michigan Ladder Exclusive Silk Finish
- \* Wood Ladder Can Be Maintained And Tightened Providing Years Of Use And Service



**We Are The Ladder Experts**



For over a century, the Michigan Ladder Company has prided itself on manufacturing and distributing only the highest quality ladders. We are America's oldest ladder manufacturer and our longevity, experience and knowledge of ladder construction has made us "The Ladder Experts".

**Go Green!  
Go Wood!  
America's Renewable  
Resource**



## WOOD STEP PLATFORM \* Heavy Duty Type I Model 1354

**250 LB RATED**

**STEPS ON ONE  
SIDE**

**SAFETY  
GROOVED  
STEPS**



Large platform (15-3/4" x 16-3/4") has hand slot for easy moving and handling.



All steps are trussed with steel rods and front rails have safety shoes.

**\*NOTE:** Step Platforms can be used with extension or scaffold planks for ceiling height work.

Model No.	Size Ft.	Approx Width	Approx Spread	Approx Wt (lbs)	Approx Cu. Ft.	Approx Highest Standing Level
1354-02	2	20"	27"	14.4	7.2	1' 11"
1354-03	3	20"	32"	18.1	12.6	2' 10"

## WOOD STEP PLATFORM \* Heavy Duty Type I Model 1353

**250 LB RATED**

**STEPS ON BOTH  
SIDES**

**SAFETY  
GROOVED  
STEPS**



Ideal for filing rooms, offices, stockrooms, bank vaults,

### FEATURES:

- \*Rigidly Built Of Southern Yellow Pine
- \*All Steps are Trussed With Steel Rods
- \*Top Platform (15-3/4" x 16-3/4") Has A Hand Slot For Easy Handling
- \*Safety Shoes On All Rails
- \*Non-Folding Steps On **BOTH** Sides

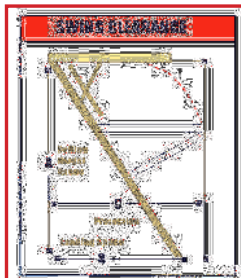
Model No.	Size Ft.	Approx Width	Approx Spread	Approx Wt (lbs)	Approx Cu. Ft.	Approx Highest Standing Level
1353-02	2	20"	32"	15.0	8.5	1' 11"
1353-03	3	20"	40 1/4"	20.2	15.9	2' 10"



**SAFETY  
GROOVED  
STEPS**

Adjustable spring tension allows setting to your preference.

3422-16 Model has insulated door panel with foil face insulation and Fire Guard door is included.



## WOOD ATTIC FOLDING STAIRWAY Heavy Duty Type I, IA, 350 lb Model 3422



3/16" wire rod under each step of the wood stairways

**250 LB RATED**

**300 LB RATED**

**350 LB RATED**

### FEATURES:

- \*Plywood Door For Greater Stability And Insulation Value
- \*Wire Rod And Truss Blocks Under Every Step
- \*Full Width Piano Hinge Supports Full Width Of Stairs
- \*Completely assembled and ready to install.
- \*Adjustable Spring Tension
- \*All Formed Metal Hardware, No Welded Joints

Model No.	Matl.	Ceiling Height (A)	Landing Space(B)	Proj. Width (C)	Stile Size	Tread Size	Weight Capacity	Approx Wt (lbs)	Approx Cu. Ft.	Rough Ceiling Opening
3422-24	Wood	84" - 105"	56"	66"	1"x4"	1"x4"	250 lbs	58	8.5	22" x 54"
3422-25	Wood	105" - 123"	64"	75"	1"x4"	1"x4"	250 lbs	61	8.5	22" x 54"
3422-54	Wood	84" - 105"	56"	66"	1"x4"	1"x4"	250 lbs	62	9.5	25 1/2" x 54"
3422-55	Wood	105" - 123"	64"	75"	1"x4"	1"x4"	250 lbs	65	9.5	25 1/2" x 54"
3422-64	Wood	84" - 105"	57"	68"	1"x5"	1"x6"	300 lbs	70	8.5	22" x 54"
3422-65	Wood	105" - 123"	65"	77"	1"x5"	1"x6"	300 lbs	76	8.5	22" x 54"
3422-74	Wood	84" - 105"	57"	68"	1"x5"	1"x6"	300 lbs	75	9.5	25 1/2" x 54"
3422-75	Wood	105" - 123"	65"	77"	1"x5"	1"x6"	300 lbs	83	9.5	25 1/2" x 54"
3422-15	Alum	105" - 120"	64"	75"	1"x4"	1"x4"	300 lbs	65	9.5	25 1/2" x 54"
3422-16	Alum	129" - 144"	90"	92"	1"x4"	1"x4"	350 lbs	75	11.2	25 1/2" x 63"

**300LB RATED**

## WOOD PARALLEL BAR EXTENSION TRESTLE

### Extra Heavy Duty Type IA Model 1745



Extra heavy gauge steel hinges are used to secure both sections of the ladder. Top of side rails are mitered for a perfect fit.

Extra heavy duty steel locking guides for smooth operation of fly section. Rung locking bar provides security when fly section is extended.



#### FEATURES:

- \*Center Section Extends And Is Locked At Desired Position By An Extra Heavy Duty Steel Locking Bar.
- \*New Heavy Duty Steel Guides Hold Center Section Rigid
- \*Equipped With 3/16" Steel Side Spreaders
- \*Large 2" x 7/8" Oval Hickory Bars Provide Additional Strength And Stronger Support Than Round Rungs
- \*Exclusive Michigan Ladder Silk Finish

Model No.	Size Ft.	Approx Width	Approx Spread	Approx Wt (lbs)	Approx Cu. Ft.	Max. Ext Length
1745-06	6	29 5/8"	42 1/4"	59.2	9.0	8' 8"
1745-08	8	32 3/4"	55"	72.2	12.7	12' 8"
1745-10	10	35 5/8"	68 1/8"	87.5	16.7	16' 8"
1745-12	12	38 5/8"	80 1/2"	109.3	21.1	20' 8"
1745-14	14	41 1/2"	94 1/8"	133.7	25.8	24' 8"
1745-16	16	44 5/8"	105 7/8"	160.4	31.0	27' 8"



Hickory bars are mortised full size through the side rails for maximum strength.



Riveted steel rung braces are provided every four feet for extra reinforcement.

**300LB RATED**

## WOOD PARALLEL BAR TRESTLE

### Extra Heavy Duty Type IA Model 1740



Oval Hickory bars are mortised full size through the side rails for maximum strength.

#### FEATURES:

- \*Clear, Select Kiln Dried Hemlock And Hickory
- \*The Hickory Bars Are Mortised Full Size Through The Side Rails For Maximum Strength and Support
- \*Large 2" x 7/8" Oval Hickory Bars Are Centered 12" And Are Opposite Each Other
- \*Riveted Steel Rung Braces Are Provided Every Four Feet For Extra Reinforcement
- \*These Trestles Are Strong, Light And Rigid
- \*Oval Bars Form A Superior And Stronger Support Than Round Rungs. These Trestles Are Equipped With Steel U-Hinge Assemblies.
- \*All Hardware Is Zinc Plated

Model No.	Size Ft.	Approx Width	Approx Spread	Approx Wt (lbs)	Approx Cu. Ft.	Approx Highest Standing Level
1740-06	6	29 5/8"	42 1/4"	32.4	6.0	N/A
1740-08	8	32 3/4"	54 3/4"	44.3	8.5	N/A
1740-10	10	35 5/8"	68 1/2"	58.8	13.4	N/A
1740-12	12	38 5/8"	80 3/8"	74.7	14.2	N/A
1740-14	14	41 1/2"	92 3/4"	94.5	17.4	N/A
1740-16	16	44 5/8"	106 3/4"	112.4	20.9	N/A

Extra heavy gauge steel hinges are used to secure both sections of the ladder. Top of side rails are mitered for a perfect fit.



Riveted steel rung braces are provided every four feet for extra reinforcement



An extra heavy duty two man trestle provides for one person to work on each side. These trestles are especially designed for installation and maintenance of sprinkler systems and pipe fitting.



Spring Locks  
available  
upon request.



1440 & 1470 has rope  
and pulley system with  
heavy-duty hardware.

Side rails are flared\*\* at  
the bottom for additional  
stability.



1430 & 1470 has all rungs  
fully rodded and supported  
with a rung truss block.



**\*NOTE**  
16' through 28' is 300 lb rated  
32' through 40' is 250 lb rated

**\*\*The 16' model does not have a flared bottom.**

## WOOD EXTENSION LADDER

### Common Automatic Spread Base Heavy Duty Type IA\*

Models 1410, 1430, 1440, 1470

**300LB RATED**

#### MODEL FEATURES

- 1410 - NOT RODDED, NO ROPE & PULLEY
- 1430 - SAME AS 1410 BUT IS FULLY RODDED
- 1440 - SAME AS 1410 BUT HAS ROPE & PULLEY
- 1470 - SAME AS 1410 BUT IS FULLY RODDED  
AND HAS ROPE & PULLEY

#### FEATURES:

- \*Strong And Sturdy Ladder For General Industrial Use
- \*Straight Grained Hemlock Side Rails
- \*Extra Strong 1-5/32" Hickory Rungs
- \*Heavy Duty Zinc Plated Hardware
- \*These Ladders Have Double Guides On The Top Of  
The Ladder
- \*Exclusive Michigan Ladder Silk Finish

Model No.	Size Ft.	Approx Overlap	Max. Ext. Length	Approx Wt (lbs)	Approx Cu. Ft.	Approx Highest Standing Level
1410,1430, 1440, 1470-16	16	3'	13'	36.0	12.6	9' 7"
1410,1430, 1440, 1470-20	20	3'	17'	45.0	15.8	13' 6"
1410,1430, 1440, 1470-24	24	3'	21'	54.0	19.0	17' 4"
1410,1430, 1440, 1470-28	28	3'	25'	63.0	22.1	21' 2"
1410,1430, 1440, 1470-32	32	3'	29'	72.0	25.3	25' 1"
1410,1430, 1440, 1470-36	36	4'	32'	81.0	28.4	27' 11"
1410,1430, 1440, 1470-40	40	5'	35'	90.3	31.6	30' 10"



1450 & 1480  
has rope and  
pulley system  
with heavy-duty  
hardware.



1460 & 1480 has all rungs  
fully rodded and supported  
with a rung truss block.



Side rails are parallel  
to each other the  
entire length of  
ladder.

Spring Locks  
available  
upon request.

**\*NOTE**  
16' through 28' is 300 lb rated  
32' through 40' is 250 lb rated

## WOOD EXTENSION LADDER

### Common Automatic Parallel Base Heavy Duty Type IA\*

Models 1420, 1450, 1460, 1480

**300LB RATED**

#### MODEL FEATURES

- 1420 - NOT RODDED, NO ROPE & PULLEY
- 1460 - SAME AS 1420 BUT IS FULLY RODDED
- 1450 - SAME AS 1420 BUT HAS ROPE & PULLEY
- 1480 - SAME AS 1420 BUT IS FULLY RODDED  
AND HAS ROPE & PULLEY

#### FEATURES:

- \*Strong And Sturdy Ladder For General Industrial Use
- \*Straight Grained Hemlock Side Rails
- \*Extra Large 1-5/32" Hickory Rungs
- \*Heavy Duty Zinc Plated Hardware
- \*These Ladders Have Double Guides On The Top Of  
The Ladder
- \*Exclusive Michigan Ladder Silk Finish

Model No.	Size Ft.	Approx Overlap	Max. Ext. Length	Approx Wt (lbs)	Approx Cu. Ft.	Approx Highest Standing Level
1420,1460, 1450, 1480-16	16	3'	13'	37.0	12.1	9' 7"
1420,1460, 1450, 1480-20	20	3'	17'	46.0	15.1	13' 6"
1420,1460, 1450, 1480-24	24	3'	21'	55.0	18.1	17' 4"
1420,1460, 1450, 1480-28	28	3'	25'	64.0	21.2	21' 2"
1420,1460, 1450, 1480-32	32	3'	29'	73.0	24.2	25' 1"
1420,1460, 1450, 1480-36	36	4'	33'	82.0	27.2	27' 11"
1420,1460, 1450, 1480-40	40	5'	35'	91.0	30.2	30' 10"



**300 LB RATED**

## WOOD SINGLE LADDER

### Heavy Duty Type IA

#### Models 1510, 1530, 1560, 1580

Model 1510 is a single wood ladder with tapered side rails.

Model 1580 is the same as the Model 1510 but is fully rodded with truss blocks.



Model 1530 is a single wood ladder with parallel side rails.

Model 1560 is the same as the Model 1530 but is fully rodded with truss blocks.

#### FEATURES:

- \*Type "A" Tapered 1/2" Per Foot
- \*Strong, Sturdy Ladder For Industrial Use
- \*Straight Grained Hemlock Side Rails
- \*Extra Large 1-5/32" Hickory Rungs
- \*Exclusive Michigan Ladder Silk Finish

Model No.	Size Ft.	Approx Wt (lbs)	Approx Cu. Ft.	Approx Highest Standing Level
1510,1580-08	8	16.1	3.0	4' 10"
1510,1580-10	10	19.6	3.7	6' 9"
1510,1580-12	12	23.7	4.4	8' 8"
1510,1580-14	14	28.9	5.2	10' 8"
1510,1580-16	16	32.7	6.0	12' 6"
1510,1580-18	18	41.5	7.3	14' 6"
1510,1580-20	20	43.1	8.2	16' 5"

#### FEATURES:

- \*"Parallel Type" Straight Side Rails
- \*Strong, Sturdy Ladder For Industrial Use
- \*Straight Grained Hemlock Side Rails
- \*Extra Large 1-5/32" Hickory Rungs
- \*Exclusive Michigan Ladder Silk Finish

Model No.	Size Ft.	Approx Wt (lbs)	Approx Cu. Ft.	Approx Highest Standing Level
1530,1560-08	8	16.2	3.1	4' 10"
1530,1560-10	10	19.7	3.8	6' 9"
1530,1560-12	12	23.8	4.5	8' 8"
1530,1560-14	14	29.0	5.3	10' 8"
1530,1560-16	16	32.8	6.1	12' 6"
1530,1560-18	18	41.6	7.4	14' 6"
1530,1560-20	20	43.2	8.3	16' 5"

**300 LB RATED**

## WOOD TREE SURGERY LADDER

### Heavy Duty Type IA

#### Model 1761

#### MAXIMUM USE IS 2 SECTIONS

Special plated steel reinforcements at the section interlock assures positive fit-in joint for secure additional sections. Steel reinforcements also provide protection against excessive wear.



Two pair of heavy gauge metal rung braces on each section provides protection against racking.



#### FEATURES:

- \*10 Foot Sections Firmly Attach To Each Other
- \*Strong, Sturdy Ladder For Industrial Tree Service Use
- \*2 Pair Of Rung Braces Per Section For Anti Racking
- \*Straight Grained Hemlock Side Rails
- \*Extra Large 1-5/32" Hickory Rungs
- \*Heavy Duty Zinc Plated Hardware
- \*Exclusive Michigan Ladder Silk Finish

Model No.	Size Ft.	Approx Wt (lbs)	Approx Cu. Ft.	Approx Highest Standing Level
1761-10	10	20.0	4.2	N/A

NOTE:  
Maximum Use - 2 Sections

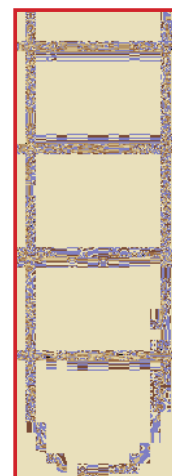
## PORTABLE SAFETY LADDER

### Hardwood Rungs

#### Models 322, 323, 324, 326

Industrial (5/8") rope ladders with hardwood rungs. Side rails pass through and are secured to rungs using steel drive pins. Rungs are spaced 12" apart. Comes standard with 5' tie-downs lines. 350 lb working load.

Oval shaped hardwood rungs, 2" x 3/4", overall length 15", 12" between the side ropes.



Model No.	Rope Type	Approx Wt (lbs)	Approx Cu. Ft.	Length
322	Nylon	2/ft	.2/ft	Order by the ft.
323	Polyester	2/ft	.2/ft	Order by the ft.
324	Poly-Blend	2/ft	.2/ft	Order by the ft.
326	HSP	2/ft	.2/ft	Order by the ft.

# ROLLING METAL LADDERS

## STEEL ROLLING WAREHOUSE LADDERS XH & XO SERIES



- \* Rigid 1" O.D. Tubular frame
- \* Climbing angle is 59°
- \* Gray powder coated
- \* 300 lb. load rating
- \* Steps are 7" deep of durable self-cleaning expanded metal
- \* Can be ordered in sizes<sup>a</sup> of 12" (1 step) to 110" (11 steps)

<sup>a</sup> Platform Height

## E-Z ROLL LADDERS 400 SERIES

- \* Rigid 1" O.D. Tubular frame is designed to be folded
- \* 10" diameter semi-pneumatic wheels
- \* Gray powder coated
- \* 300 lb. load rating
- \* Can be ordered in sizes of 50" (5 steps) to 160" (16 steps)

**CALL FOR ORDERING  
DIFFERENT SIZES AND  
AVAILABLE OPTIONS**



## STEEL PLATFORMS WP SERIES



- \* Rigid 1" O.D. Tubular frame
- \* Gray powder coated
- \* 600 lb. load rating, for use by one or two persons
- \* Can be ordered in sizes<sup>a</sup> of 20" (2 steps) to 70" (7 steps)
- \* Two 4" heavy duty casters on the rear
- \* Full 36" high handrails, provided on 5 - 7 step models, 30" hand rails provided on 2 - 4 step models

<sup>a</sup> Platform Height

## STEEL FIXED LADDERS FWT SERIES

- \* Side members are 1/4"x2"x2" steel angle
- \* Walk-thru handrails extend 42" above landing surface
- \* Gray powder coated
- \* 300 lb. load rating
- \* Walk-thru models can be used up to 20' without safety cages
- \* One-piece welded assemblies for use in application less than 20' in vertical height
- \* Available from 10' to 29'



## STEEL E-Z CLIMB 450 SERIES



- \* Rigid 1" O.D. Tubular frame
- \* 50 degree climbing angle permits forward descent to comply with ANSI Standards
- \* Gray powder coated
- \* 300 lb. load rating
- \* Can be ordered in sizes<sup>a</sup> of 30" (3 steps) to 150" (15 steps)
- \* Retractable 2" spring loaded caster system
- \* Standard 12" deep top platform

<sup>a</sup> Platform Height

## ROLLING STOCK PICKING MODEL SPL

- \* Rigid 1" O.D. Tubular frame
- \* Rugged one-piece welded ladder with the versatility of a stock picking truck
- \* Gray powder coated
- \* 500 lb. load rating consisting of 300 lbs. for the ladder and 200 lbs. for the storage shelves
- \* 10" folding platform shelves
- \* Can be ordered in sizes<sup>a</sup> of 60" (6 steps) to 110" (11 steps)

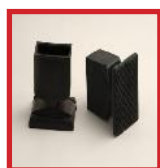
<sup>a</sup> Platform Height



All steel ladders comply with OSHA 1910.29 and ANSI A14.7 Standards

# OPTIONAL LADDER ACCESSORIES AND REPLACEMENT PARTS

## FOR WOOD EXTENSION, SINGLE LADDERS AND EXTENSION TRESTLES



**360200**  
Rubber Ladder  
Shoes  
Attached-**360210**



**360900**  
Swivel Safety  
Shoes  
Attached-**360810**



**200000**  
Dayton A-500  
Shoes  
Attached-**200010**



**363800**  
Cable Hook Kit  
Attached-**363810**



**363100**  
Pole Grip  
Attached-**363110**



**362800**  
Roof Hooks,  
Folding  
Attached-**362810**



**364600**  
Ladder Stand Off



**360500**  
Extension Ladder  
Covers



**180032**  
Rope And  
Pulley Kit.  
Ordered by  
Ladder Length.



**180030**  
Preservative On  
Wood Extensions



**180021**  
Fully Truss  
Rodded Rungs



**180031**  
Attach Angle  
Bracing On All  
Rungs.

## FOR FIBERGLASS STEPLADDERS



**363200**  
Field Mount  
Fiberglass Pail  
Shelf\*\*  
Attached-**363202**

## FOR FIBERGLASS AND ALUMINUM EXTENSION AND SINGLE LADDERS



**363800**  
Cable Hook Kit  
Attached-**363810**



**362800**  
Roof Hooks,  
Folding  
Attached-**362810**



**361900**  
Aluminum  
Ladder Jacks  
*Long Bodies Also  
Available*



**366300**  
Rung Plugs  
(Cork)



**360500**  
Extension  
Ladder Covers



**363100**  
Pole Grip  
Attached-**363110**



**363850**  
Combo Cable  
Hooks &  
V-Rung\*  
Attached-**363950**



**363860**  
Padded Steel  
V-Rung \*\*  
Attached-**363960**



**364600**  
Ladder Stand Off



**366200**  
Ladder Levelers  
Attached-**366210**

## FOR WOOD STEPLADDERS



**361110**  
Step Safety  
Shoes - 3/4" Rail  
& Leg\*  
Attached-**361140**



**361120**  
Step Safety  
Shoes- 1" Rail &  
Leg\*  
Attached-**361150**



**180029**  
Preservative On  
Wood Steplad-  
ders\*



**360300**  
Rubber Feet\*  
Attached-**360310**



**180010**  
Field Mount  
Wood Pail  
Shelf\*  
Attached-**180011**

Specifications meet or exceed the Occupational Safety and Health Act of 1970 (OSHA) requirements where they have been established and the American National Standards Institute (ANSI) Safety Codes.

All wood ladders are available with wood preservative added for weather protection.

Wood Preservative Fungicide  
**WOOD TREAT® MB**

\* For Wood Only \*\* For Fiberglass Only



## GENERAL LADDER SAFETY

Before using a ladder, read all of the safety labels, they're important! Check the duty rating label to ensure the ladder will hold the intended weight (person, tools and materials). Have the proper ladder length (not too long and not too short) for the job you will be performing (check table). Aluminum ladders conduct electricity. Be aware of energized electrical circuits, electrical devices, and wires. Be alert; do not use while under the influence of alcohol or drugs. Get down if you feel weak or dizzy. Always face the ladder while working, climbing or descending. To protect children, do not leave ladder set up and unattended. Do not overreach, move the ladder when needed. A ladder is a simple tool. It will give you years of service as long as it is used, maintained and stored properly. Failure to follow all cautions and instructions can cause an accident. Read the labels before climbing up, not on the way down!

## LADDER INSPECTION

We manufacture safe ladders...but only you can make ladders safe. Always inspect the ladder prior to each use; for example, make sure the rungs are clean and in good condition. You should never climb a broken or damaged ladder. Make sure all spreaders, rung locks, rope and pulley systems, safety shoes (if equipped) and pail shelves are functioning properly. All damaged ladders should be destroyed. Never make temporary repairs of damaged or missing parts. Make sure the ladder is clean, free from grease, oil, mud, snow, wet paint and other slippery material. Keep your shoes clean; leather soles should not be used.

## STEPLADDER SAFETY

Select a level and firm surface to set up the stepladder. Make sure the legs are fully opened and extended, the spreaders are locked and pail shelf is in proper position if appropriate. Use extra caution on slippery surfaces. Do not use the ladder if high winds or storms will hinder performance. Always keep your body weight between the rails of the ladder for balance. Do not let ladder come in contact with live electrical wires. Do not place on boxes, unstable bases, or on scaffolds to gain additional height. Do not place in front of door opening toward ladder. Do not attempt to "walk" or "jog" the ladder when standing on it.

## EXTENSION AND SINGLE LADDER SAFETY

Select lower and upper support points that are firm and level. Use extra caution on slippery surfaces. Do not use the ladder if high winds or storms will hinder performance. Always keep your body weight between the rails of the ladder for balance. Do not let ladder come in contact with live electrical wires. There are several methods to raise an extension ladder. One good method when space permits is to brace the bottom end against the building and raise the ladder by walking toward the building, pushing up on the rungs or rails. Extend the sections while the ladder is in the vertical position. Place the base of the ladder a distance from the wall or upper support equal to one quarter (1/4) of the effective working length of the ladder.

The ladder should extend 1 to 3 feet above the edge of the roof it is resting against if you intend to climb onto the roof. Secure the lower end of the ladder to prevent outward slipping. Tie the top of a single or extension ladder to the support the ladder is resting against. Make sure the extension rung locks are fully engaged.

## OSHA REGULATIONS

OSHA regulation are specific with respect to uses of ladders in general business and industry, including industrial, commercial and office applications. All businesses which come under provisions of the Occupational Safety & Health Act of 1970 are subject to provisions of Portable Wood, Section 1910.25; Portable Metal, Section 1910.26; Fixed Ladders, Section 1910.27; Construction Industry Ladders, Section 1926.1053; of the Occupational Safety and Health Administration (OSHA) regulations.

Several states have adopted their own standards that may be more stringent than OSHA. State OSHA representatives should be contacted by users to be certain products meet these requirements.

## ANSI REQUIREMENTS

Different ANSI safety standards apply to different type and materials of ladders.

ANSI A 14.1.....	Wood Ladders
ANSI A 14.2.....	Metal Ladders
ANSI A 14.3.....	Fixed Ladders
ANSI A 14.5.....	Fiberglass Ladders
ANSI A 14.7.....	Steel Ladders
ANSI A 14.10.....	Special Duty Ladders
ANSI A 10.8.....	Stage Platforms/Rolling Scaffolds

ANSI Standards also establish a duty rating. This rating identifies which portable ladder can be safely used under different maximum loads. The Duty Ratings are as follows:

TYPE RATING	LB. RATING	USE RATING
IAA	375 LB.	SPECIAL DUTY
IA	300 LB.	EXTRA HEAVY DUTY INDUSTRIAL
I	250 LB.	HEAVY DUTY INDUSTRIAL
II	225 LB.	MEDIUM DUTY COMMERCIAL
III	200 LB.	LIGHT DUTY HOUSEHOLD

The extensive testing and design work required by ANSI help to determine the appropriate duty rating for the different ladder models. Rated load capacities include the combined weight of the user, tools and all materials on the ladder at one time. The test requirements are performed with a safety factor to ensure the safety of the ladder and to ensure the ladder meets the requirements of each duty rating. Proper use of a ladder is required for the ladder to perform according to the specified load.

**MACHAN**  
LADDER COMPANY

Toll Free: 800-444-6704  
Phone: 734-482-5946  
Facsimile: 734-482-8424  
www.michiganladder.com

# M~~A~~CH~~A~~GAN

## LADDER COMPANY

Ladders for those who make their living on ladders!

Toll Free: 800-444-6704

Phone: 734-482-5946

Facsimile: 734-482-8424

12 East Forest Avenue, P.O. Box 981307, Ypsilanti, Michigan 48198

[www.michiganladder.com](http://www.michiganladder.com)